

Black Knight PRESS

UPIC bkpress | SAGE 67679
PPAI 267931 | ASI 40601

PRODUCT CATALOG

2024 JULY 2025

Expires: 06/30/2025



A+ SAGE
5 Star ASI



Minority Women
Owned Business



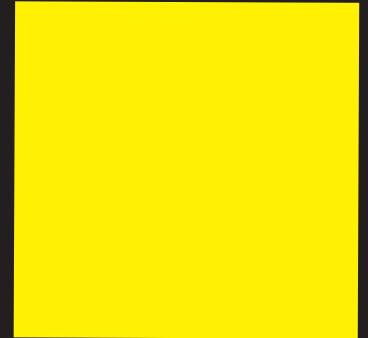
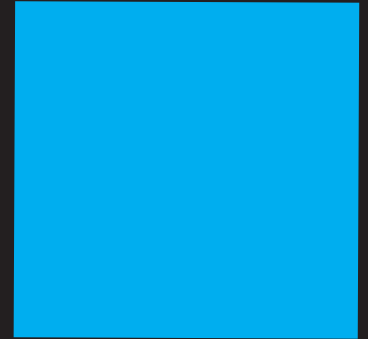
CPSIA & Prop 65
Compliant



All Products
Made in the USA

bkpress.com

Note: Prices are subject to change without notice due to fluctuations in paper costs and industry dynamics. For the most up-to-date pricing information, please visit our website or contact us directly.



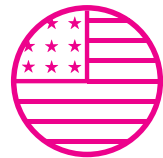
Welcome to Black Knight's line of printed products. Our wish is to be a part of your successful marketing plans. We are proud of several facts that may be of interest to you:



We maintain the highest distributor ratings available in the industry



All products are CPSIA and California Proposition 65 compliant and do not require labeling



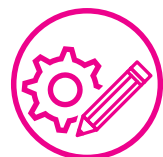
All products are printed and assembled in the USA



We use environmentally responsible products and techniques in our production processes



We are proud to embrace our new identity as a minority and women-owned business



All products are made to order, which allows for individual page customization and calendars that can start with any month



Have a special project? We welcome custom projects



Black Knight PRESS



MA-400 Acrylic Calendar

Final Size	5 1/2" x 5 1/2"
Imprint Area	3" x 1", full color
Paper Stock	100 lb. uncoated cover
Finishing	individually shrink-wrapped
Set-up	\$40 (t) with print-ready art

Product Description

The calendar is 12 loose monthly sheets plus a cover with the stock design as shown. The loose sheets lay flat against the assembled stand. Each page comes with a full color imprint and U.S. or Canadian holidays. The calendar is individually shrink-wrapped.

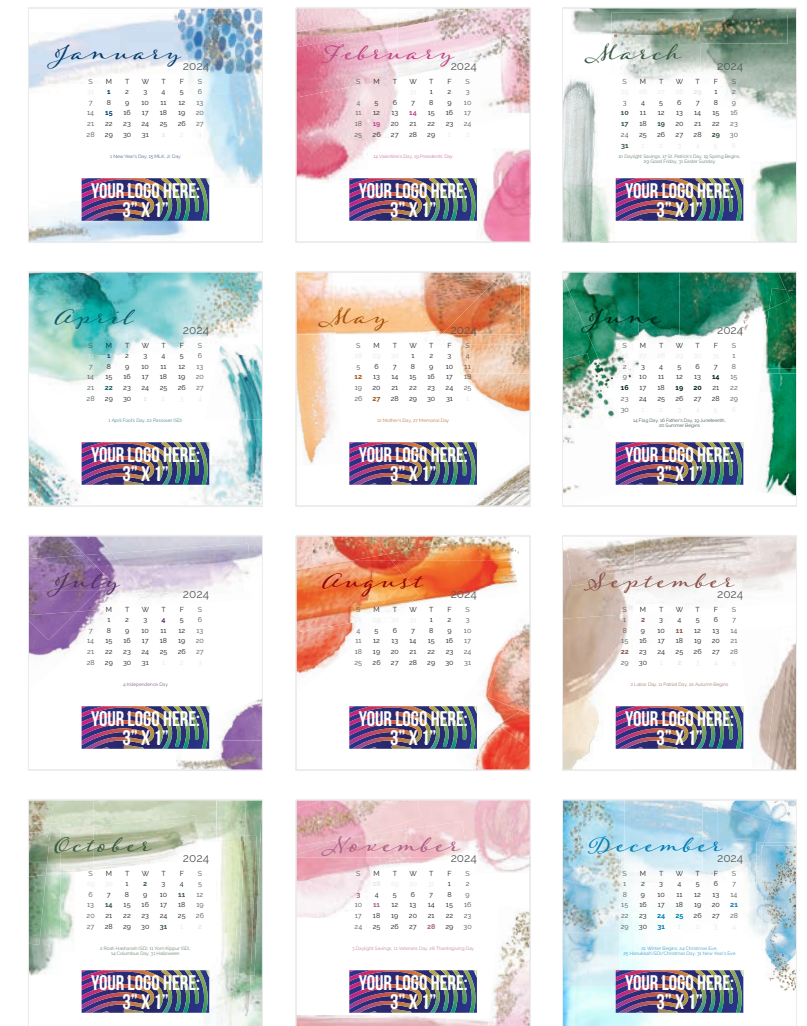
Additional Options

Custom Layout	\$100 (t) with print-ready art
Additional Months	add 7% per month
Envelopes	bubble env. \$.60 (t)
Physical Proof	\$30 (t). PDF proof no charge

Qty	100	250	500	1000
Price <small>1 sided print</small>	10.00	9.50	9.00	8.50

R

Stock Monthly Images



CONTENTS

03 NEW STOCK PHOTO CALENDAR

05 NAME PERSONALIZED CALENDARS

- 06 Desk Calendars
- 09 Wall Calendars
- 10 Image Sets
- 14 Name Personalized Info & FAQ

16 CUSTOM PHOTO CALENDARS

- 17 Desk Calendars
- 20 Wall Calendars
- 22 Single Photo Wall Calendars

24 STOCK PHOTO CALENDARS

- 25 Desk Calendars
- 26 Wall Calendars
- 27 Image Sets

29 DAILY CALENDARS

- 30 Calendar Styles
- 31 Additional Options

32 DESK PAD CALENDARS

- 33 Black Desk Pad (17"x11")
- 34 Full Color Desk Pad (17"x12")

35 MISCELLANEOUS

- 36 Scratch Pads
- 37 Notebooks
- 38 Puzzle Books

39 GENERAL INFORMATION



NAME PERSONALIZED CALENDARS



Name Personalized calendars have a person's name written in the image in a unique and innovative way. You supply your excel database of names and we will create a unique calendar for every recipient in your list with their name written in every month's picture.



Qty	50	100	250	500	1000
Price	6.30	5.67	4.99	4.73	4.46

R

MC-475 CD Case Calendar

Final Size	4 5/8" x 5 7/16"
Imprint Area	1 3/4" x 1 1/2", full color
Picture Area	4 5/8" x 3"
Paper Stock	80 lb. coated cover
Envelopes	corrugated box \$.90 (t)
Set-up	\$40 (t), with print-ready art

Product Description

12 loose monthly sheets plus a cover with the recipient's name personalized in every picture. The sheets are inserted into a clear CD jewel case that works as the calendar stand when the lid is flipped back to a 45° angle. Each page comes with a full color imprint and U.S. or Canadian holidays.



Qty	100	250	500	1000
Price	4.94	4.62	4.20	3.99

R

MF-275 Tent-Style Calendar

Final Size	5 1/2" x 2 5/8"
Imprint Area	2" x 3/4", full color
Picture Area	3 1/8" x 2 1/4"
Paper Stock	100 lb. coated text
Envelopes	bubble env. \$.60 (t)
Binding	white (default) or black metal twin-loop
Set-up	\$40 (t), with print-ready art

Product Description

Mini tent-style calendar with the recipient's name personalized in every picture and full color imprint.



Qty	50	100	250	500	1000
Price	10.00	9.60	9.30	8.90	8.50

R

MA-475 Acrylic Calendar

Final Size	4 5/8" x 5 7/16"
Imprint Area	1 3/4" x 1 1/2", full color
Picture Area	4 5/8" x 3"
Paper Stock	100 lb. uncoated cover
Finishing	individually shrink-wrapped
Envelopes	bubble env. \$.60 (t)
Set-up	\$40 (t), with print-ready art

Product Description

12 loose monthly sheets plus a cover with the recipient's name personalized in every picture. The loose sheets lay flat against the assembled stand. Each page comes with a full color imprint and U.S. or Canadian holidays. The calendar is individually shrink-wrapped.



Qty	50	100	250	500	1000
Price	6.83	6.41	6.09	5.78	5.57

R

MF-475 Tent-Style Calendar

Final Size	4 3/4" x 5 1/4"
Imprint Area	1 3/4" x 1 1/2", full color
Picture Area	4 3/4" x 3"
Paper Stock	100 lb. coated text
Envelopes	bubble env. \$.60 (t)
Binding	white (default) or black metal twin-loop
Set-up	\$40 (t), with print-ready art

Product Description

Tent-style calendar with the recipient's name personalized in every picture, full color imprint and U.S. or Canadian holidays.



MF-175B Tent-Style Calendar

Final Size	5 1/2" x 2 5/8"
Imprint Area	2" x 5/8", full color
Picture Area	3" x 2"
Paper Stock	100 lb. coated text
Envelopes	bubble env. \$.60 (t)
Binding	black metal twin-loop
Set-up	\$40 (t), with print-ready art

Product Description

Mini tent-style calendar printed on both sides with the recipient's name personalized in every picture and full color imprint. The calendar prints on a black background and is attached with black metal twin-loop binding to a black tent-style stand.



Qty	100	250	500	1000
Price	5.15	4.83	4.41	4.20

R



Qty	50	100	250	500	1000
Price	8.40	7.88	7.46	6.83	6.62

R

MF-575B Tent-Style Calendar

Final Size	5 1/2" x 5 1/2"
Imprint Area	1 7/8" x 1 1/8", full color
Picture Area	4 1/4" x 2 3/4"
Paper Stock	100 lb. coated text
Envelopes	bubble env. \$.60 (t)
Binding	black metal twin-loop
Set-up	\$40 (t), with print-ready art

Product Description

Tent-style calendar printed on both sides with the recipient's name personalized in every picture and full color imprint. The calendar prints on a black background and is attached with black metal twin-loop binding to a black tent-style stand.



MF-675 Tent-Style Calendar

Final Size	11" x 5 1/2"
Imprint Area	3 1/4" x 1", full color
Picture Area	4 3/4" x 3 1/2"
Paper Stock	100 lb. coated text Add \$1.00 (r) for 80 lb. cover stock
Envelopes	bubble env. \$.90 (t)
Binding	white (default) or black metal twin-loop
Set-up	\$40 (t), with print-ready art

Product Description

Tent-style calendar with the recipient's name personalized in every picture, full color imprint and U.S. or Canadian holidays.

Qty	50	100	250	500	1000
Price 2 sided print	9.66	8.93	8.51	7.88	7.56

R



MF-775 Tent-Style Calendar

Final Size	5 1/4" x 8"
Imprint Area	2 1/2" x 1", full color
Picture Area	5 1/4" x 3 3/8"
Paper Stock	100 lb. coated text Add \$.60 (r) for 80 lb. cover stock
Envelopes	bubble env. \$.80 (t)
Binding	white (default) or black metal twin-loop
Set-up	\$40 (t), with print-ready art

Product Description

Tent-style calendar with the recipient's name personalized in every picture, full color imprint and U.S. or Canadian holidays.

Qty	50	100	250	500	1000
Price 2 sided print	8.82	7.88	7.14	6.62	6.30

R

WALL CALENDARS



WA-805 Wall Calendar

Final Size	11" x 17" (open) 11" x 8 1/2" (closed)
Imprint Area	6 1/4" x 1 1/4", full color
Picture Area	11" x 8 1/2"
Paper Stock	80 lb. coated cover
Envelopes	bubble env. \$1.00 (t)
Binding	white (default) or black metal twin-loop
Set-up	\$40 (t), with print-ready art

Product Description

Large size, middle twin-loop bound wall calendar (11"x17" open) with the recipient's name personalized in every picture. Features a full color imprint, previous and next month previews, and U.S. or Canadian holidays.

Qty	25	50	100	250	500	1000
Price	16.28	14.96	13.13	12.08	11.55	10.76

R



MF-875 Tent-Style Calendar

Final Size	8 1/2" x 5 1/2"
Imprint Area	3" x 1 1/8", full color
Picture Area	4 1/4" x 3 3/8"
Paper Stock	100 lb. coated text Add \$.60 (r) for 80 lb. cover stock
Envelopes	bubble env. \$.90 (t)
Binding	white (default) or black metal twin-loop
Set-up	\$40 (t), with print-ready art

Product Description

Tent-style calendar with the recipient's name personalized in every picture, full color imprint and U.S. or Canadian holidays.

Qty	50	100	250	500	1000
Price 2 sided print	8.61	7.67	6.93	6.41	6.09

R



MF-725 Tent-Style Calendar

Final Size	5 1/2" x 7"
Imprint Area	2 1/4" x 1", full color
Picture Area	5 1/2" x 3 1/4"
Paper Stock	100 lb. coated text
Envelopes	bubble env. \$.80 (t)
Binding	white (default) or black metal twin-loop
Set-up	\$40 (t), with print-ready art

Product Description

Tent-style calendar with the recipient's name personalized in every picture, full color imprint and U.S. or Canadian holidays.

Qty	50	100	250	500	1000
Price 2 sided print	8.61	7.67	6.93	6.41	6.09

R



WB-835 Wall Calendar

Final Size	8 1/2" x 11" (open) 8 1/2" x 5 1/2" (closed)
Imprint Area	2" x 1 5/8", full color
Picture Area	8 1/2" x 5 1/2"
Paper Stock	80 lb. coated cover
Envelopes	bubble env. \$.80 (t)
Binding	white (default) or black metal twin-loop
Set-up	\$40 (t), with print-ready art

Product Description

Mini size, middle twin-loop bound wall calendar (8 1/2" x 11" open) with the recipient's name personalized in every picture. Features a full color imprint, previous and next month previews, and U.S. or Canadian holidays.

Qty	50	100	250	500	1000
Price	8.40	8.09	7.46	6.83	6.51

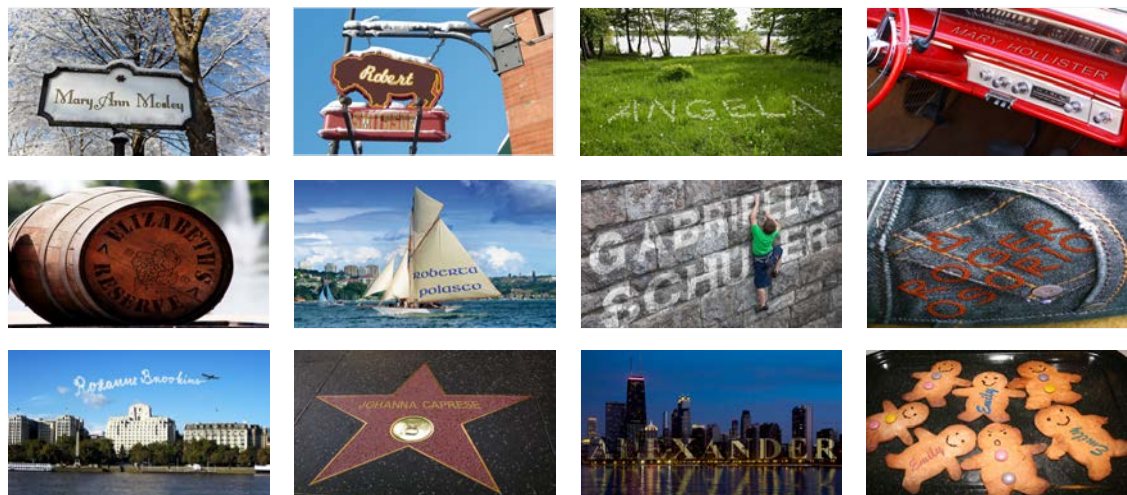
R

***Smaller than the traditional size but great for tight spaces and more economical!**



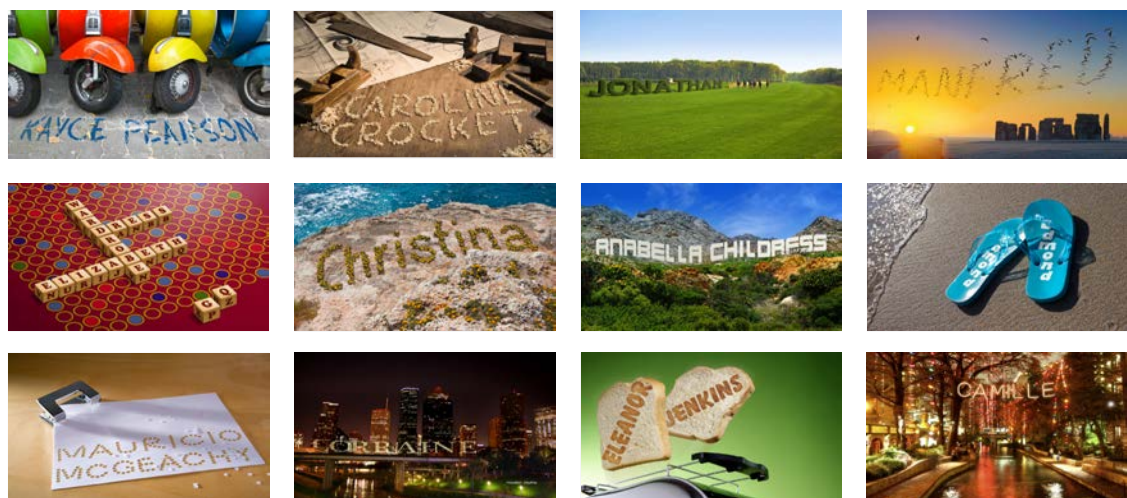
★ **ALL STARS 1**

*Some images on this set can only hold a First Name.



★ **ALL STARS 2**

*Some images on this set can only hold a First Name.



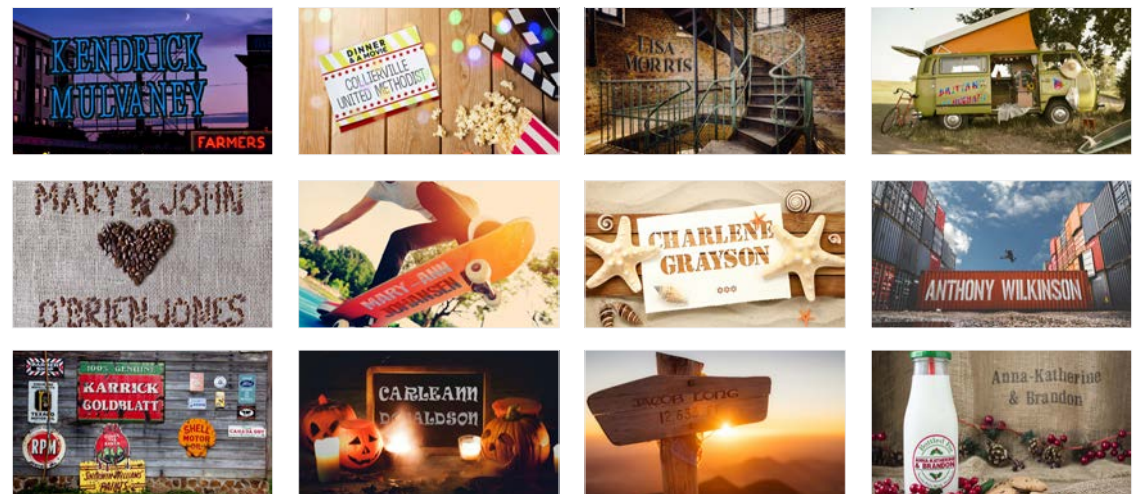
★ **ALL STARS 3**

*Some images on this set can only hold a First Name.



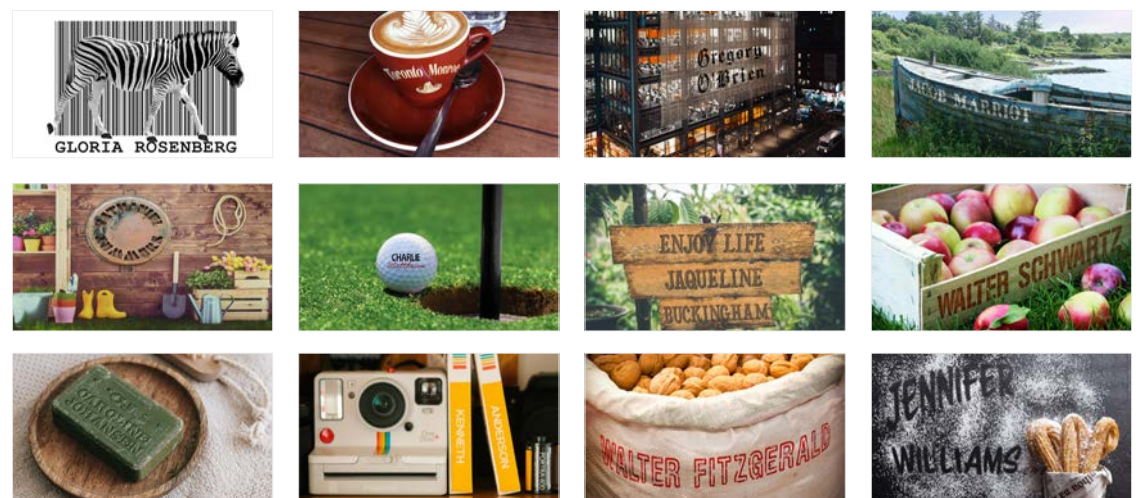
★ **ALL STARS 4**

*First & Last Names on all 12 pictures. Accepts: & - '.



★ **ALL STARS 5**

*First & Last Names on all 12 pictures. Accepts: & - '.



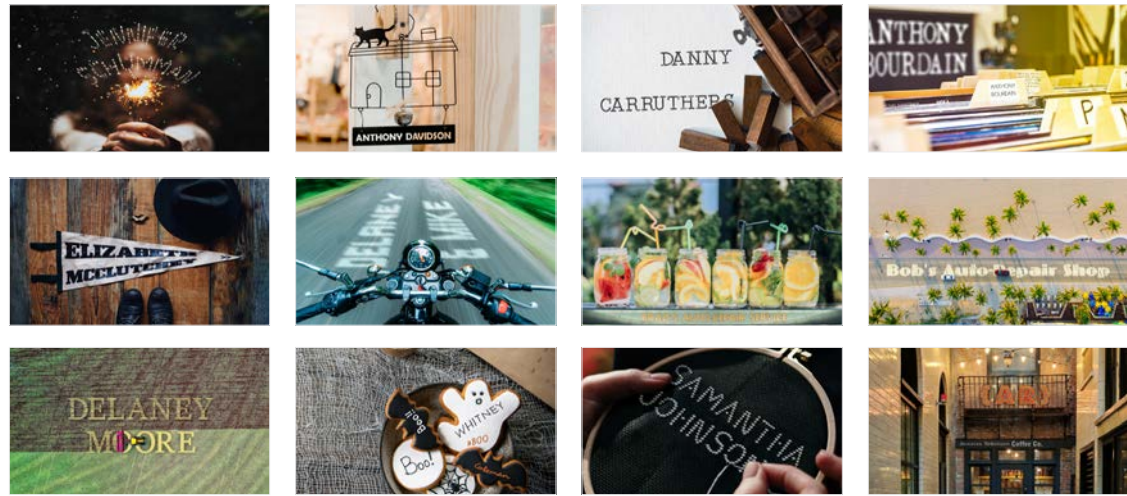
★ **ALL STARS 6**

*First & Last Names on all 12 pictures. Accepts: & - '.

Note: Submitting names in ALL CAPS may produce unexpected results depending on the image. To ensure clarity, please use standard capitalization (e.g., John Smith).

Note: Submitting names in ALL CAPS may produce unexpected results depending on the image. To ensure clarity, please use standard capitalization (e.g., John Smith).

Note: Submitting names in ALL CAPS may produce unexpected results depending on the image. To ensure clarity, please use standard capitalization (e.g., John Smith).



★ **ALL STARS 7**
*First & Last Names on all 12 pictures. Accepts: & - '



21 **TWENTY-ONE**
*First & Last Names on all 12 pictures. Accepts: & - '



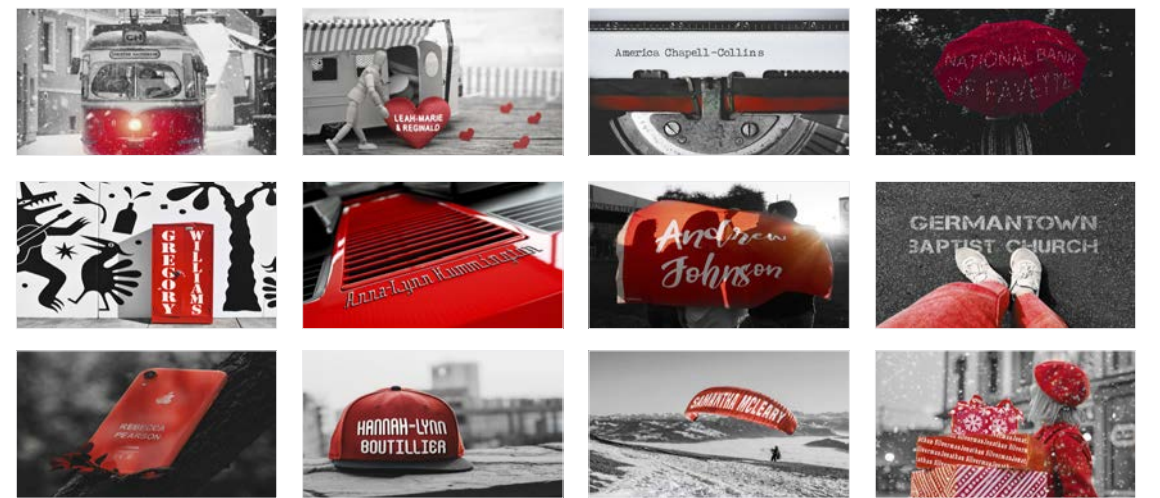
22 **TWENTY-TWO**
*First Names only on all images



23 **TWENTY-THREE**
*Some images on this set can only hold a First Name.



R **RETRO**
*First & Last Names on all 12 pictures. Accepts: & - '



S **SCARLET**
*First & Last Names on all 12 pictures. Accepts: & - '

Note: Submitting names in ALL CAPS may produce unexpected results depending on the image. To ensure clarity, please use standard capitalization (e.g., John Smith).

FREQUENTLY ASKED QUESTIONS

Can both, first and last name be included in the images?

It depends. Some images have the space available to include both first and last name, others do not. Trying to fit both names in an image that is not meant to hold both names will produce unrealistic results. The cover will include first and last name.

Can less than 100 names/calendars be ordered?

Yes. For items with a published minimum of 100, the absolute minimum is 50 with a 15% less than minimum fee added to the 100 column price.

Is there a set-up fee?

There is no set-up if you use one of our pre-determined image sets, use the standard cover & layout and run the calendar for 12 months. You must also submit print-ready artwork for the imprint area(s). Typesetting or artwork alterations made on our end will incur additional charges.

Do you send a proof before printing?

Yes. You should receive a virtual PDF proof of your calendar within 5 business days from receipt of your properly formatted data and logo file. The proof will include the logo and one name from your data file. Additional proofs are \$40 (t).

Can I personalize the image area with a company name rather than a person's name?

Sure! However, keep in mind that company names are sometimes long and as a result the image personalization may look unrealistic. In your spreadsheet enter the entire company name in the First Name column and choose from an image set that can hold First and Last Name on all images.

Can I submit my own images for personalization?

It can be done, however, images will need to be submitted for review since not all images are suitable for personalization. Submitting your own images will incur an additional set-up cost per image varying on image complexity.

What is the character limit on names?

We recommend 12 characters or less for First Name and 12 or less for Last Name depending on the image. Longer names can be used, but the quality of print is not guaranteed.

What if we need a few more calendars?

We offer a one (1) time re-order for a 12 quantity minimum at the same unit price as the original order on all name personalized calendar orders. Re-orders will run exactly as previous order. Changes to calendar features cannot be made and no proof will be sent.

Can I order blank calendars?

No, with the name personalization program each calendar must have a name. As an alternative, for a 100 qty. minimum, our stock photo calendars on page 25 can be ordered with the "seasonal" theme.

ADDITIONAL NAME PERSONALIZED CALENDAR OPTIONS

Mid-year Start Month	No charge (run for 12 consecutive months)
Additional Months or Insert Sheets	\$120 (t) set-up plus 7% for each additional month or insert.
Birthday Personalization	\$.30 (r) per calendar
Canadian Holidays	No charge (using factory predetermined list of holidays). Please note this option on your PO as U.S. holidays are default.
Special Date Inclusion	\$120 (t) set-up, up to 20, submitted in specific format. Not available on all styles.
Personalized Birthday	(See pg. 15): \$.30 (r) per birthday
Optional Covers	(See pg. 15): \$20 (t)
Custom Cover	\$80 (t), based on receiving print-ready electronic file.
Change up to 3 images	\$120 (t) set-up to change up to three images on a standard set.
Create Your Own Image Set (Mix & Match)	\$250 (t) to select 12 images from our full image library, includes custom cover (if art provided), standard cover, or one of the optional cover choices.
Logo Modification/Typesetting fee for non print-ready art	\$30 (t)
Sort	The calendars are boxed in random order. Sorting in spreadsheet order will add \$.20 (t) per calendar.
Domestic Split-ship	\$6 (t) per address plus \$.20 (t) per unit to sort by location. Applies on most orders. For larger quantities please call.
International Split-ship	\$10 (t) per address plus an additional \$.20 (t) per unit to sort by location. Applies on most orders. For larger quantities please call.
Additional Tabs on Excel Spreadsheet	\$30 (t)
Labels	\$.15 (t) per label, plus \$20 (t) label file set-up.
Calendar Insertion & Label Application	\$.72 (t)
Direct Mail Fulfillment	The per label cost of \$.15 (t), insertion & label application \$.72 (t), plus the one time label set-up fee of \$20 (t) applies. Mailers and postage are additional and vary per calendar.
Less Than Minimum	For items with a published minimum of 100, the absolute minimum is 50 with a 15% up charge to the 100 column price.

NAME PERSONALIZED INFO



PROPER EXCEL SPREADSHEET FORMATTING

Note: Submitting names in ALL CAPS may produce unexpected results depending on the image. To ensure clarity, please use standard capitalization (e.g., John Smith).

A	B	C	D	E	F	G	H	I	J
Record #	First_Name	Last_Name	Company_Name	Address_1	Address_2	City	State	Zip	Birthday Month #
01	John	Doe	Acme Co.	789 Center St.	Suite 2	Memphis	TN	38017	9

ONLY ONE NAME PER CELL. The First_Name and Last_Name fields can have up to 12 characters each, or 25 combined. Only the First_Name column is required; the Last_Name column can be left blank if you don't want last names on the calendars. The remaining columns can be left blank unless full mail preparation was requested. The birthday column is also not required unless the birthday option is requested. The "Address_1" field should ONLY include the street number and address. The "Address_2" field should ONLY be used for addresses that have a Suite #, Apartment #, etc., and should NOT be included as part of the "Address_1" field. Please refrain from using any type of symbols/signs (e.g., -, &, ', etc.) and name combinations, as we cannot guarantee them on most image sets except those that accept first and last names on all images. Double-check your spreadsheet before submission for any spelling errors or unnecessary spaces. Once submitted, we will use it exactly AS IS to generate your calendar order. If you have any questions, please contact your sales representative before submitting something that deviates from the format above to ensure it will be usable. ONLY ONE EXCEL FILE WITH ONE TAB PER ORDER. *MORE THAN ONE TAB OR DATA FILE PER ORDER WILL INCUR ADDITIONAL FEES.

OOPS, MISSED A FEW NAMES OR HAD SPELLING ERRORS?

We offer a one (1) time re-order for a 12 quantity minimum at the same unit price as the original order on all name personalized calendar orders.

**One time re-orders are an EXACT repeat of the original order with a new list of names. Changes to the calendar features cannot be made. No proof will be sent.*

CALENDAR PRICE INCLUDES

- One calendar style
- One standard image set (see pg. 10-13)
- One full color logo imprint on every month and cover (supplied print ready)
- Start any month & run for 12 months.
- One full year PDF proof (Additional proofs will incur a \$40 (t) fee)
- One excel spreadsheet with one tab per order, shipping to one location
- Standard layout design and cover

PRODUCTION PROCESS

- We will e-mail an order acknowledgment within 48 hours after the order is received and reviewed.
- We send one virtual multi-page PDF at no cost to you of 12 months plus cover within 3-5 business days – includes one recipient's name and your logo, assuming we have all necessary files from you. (Artwork alterations required after initial free proof has been sent will incur a \$40 (t) alteration fee to produce a new proof).
- Print production is 5-8 business days after virtual proof approval and is increased during the months of Oct. - Dec. Call for current lead times.

STOCK COVER



Standard Cover

OTHER COVER OPTIONS

For an additional \$20 (t) set-up you can pick from one of the cover designs below. For an \$80 (t) set-up you can supply your own print-ready custom cover design for any of the name personalized calendar styles.

**All calendar items vary in size, as a result the arrangement of items may differ from what's shown below but the company's logo and recipient's name will always be printed.*



Christmas Lantern



Christmas Bag



Ribbon



Ornaments

WANT TO SWAP UP TO 3 IMAGES ON A STANDARD SET?

For an \$120 (t) set-up you can swap up to 3 images.

CREATE YOUR OWN IMAGE SET.

For a \$250 (t) set-up you can pick your own images from our full image gallery of over 400 images to choose from.

PERSONALIZE EVEN MORE WITH A BIRTHDAY CAKE ON THE RECIPIENT'S BIRTHDAY MONTH!

For an additional \$.30 (r) per calendar you can have the standard image replaced with a personalized birthday image on the recipient's birthday month. Any quantity.



*Only first name written on image

DESK CALENDARS

Accent colors change from month to month



MC-450 CD Case Calendar

Final Size	4 5/8" x 5 7/16"
Imprint Area	1 3/4" x 1 1/2", full color
Picture Area	4 5/8" x 2 3/4"
Paper Stock	80 lb. coated cover
Set-up	\$120 (t)

Product Description

12 loose monthly sheets plus a cover with your own custom picture every month. The sheets are inserted into a clear CD jewel case that works as the calendar stand when the lid is flipped back to a 45° angle. Each page comes with a full color imprint and U.S. or Canadian holidays.

Qty 100 250 500 1000 2500
Price <small>1 sided print</small> 3.89 3.62 3.47 3.31 3.15

R

Additional Options

Back Print	black \$.30 (r), color \$.60 (r)
Grid Color Change	\$80 (t)
Custom Layout	\$120 (t) with print-ready art
Additional Months	add 7% per month
Envelopes	corrugated box \$.90 (t)
Physical Proof	\$30 (t). PDF proof no charge

MA-450 Acrylic Calendar

Final Size	4 5/8" x 5 7/16"
Imprint Area	1 3/4" x 1 1/2", full color
Picture Area	4 5/8" x 2 3/4"
Paper Stock	100 lb. uncoated cover
Finishing	individually shrink-wrapped
Set-up	\$120 (t)



Product Description

12 loose monthly sheets plus a cover with your own custom picture every month. The loose sheets lay flat against the assembled stand. Each page comes with a full color imprint and U.S. or Canadian holidays. The calendar is individually shrink-wrapped.

Qty 100 250 500 1000 2500
Price <small>1 sided print</small> 9.00 8.60 8.30 7.90 7.50

R

Additional Options

Grid Color Change	\$80 (t)
Custom Layout	\$120 (t) with print-ready art
Additional Months	add 7% per month
Envelopes	bubble env. \$.60 (t)
Physical Proof	\$30 (t). PDF proof no charge

MF-250 Tent-Style Calendar

Final Size	5 1/2" x 2 5/8"
Imprint Area	2" x 3/4", full color
Picture Area	3 1/8" x 2 1/4"
Paper Stock	100 lb. coated text
Binding	white (default) or black metal twin-loop
Set-up	\$120 (t)

Product Description

Mini tent-style calendar with your own custom picture every month and full color imprint.

Qty 100 250 500 1000
Price <small>1 sided print</small> 3.57 3.26 3.05 2.89

R



Additional Options

Back Print	black \$.30 (r), color \$.40 (r)
Custom Layout	\$120 (t) with print-ready art
Additional Months	add 7% per month
Envelopes	bubble env. \$.60 (t)
Physical Proof	\$30 (t). PDF proof no charge



CUSTOM PHOTO CALENDARS

Custom photo calendars allow the client to submit their own image for each month. The client also has the option to submit their own custom grid layout for each month and/or custom cover for no additional set-up, as long as the artwork is submitted print-ready.



MF-450 Tent-Style Calendar

Final Size	4 3/4" x 5 1/4"
Imprint Area	1 3/4" x 1 1/2", full color
Picture Area	4 3/4" x 2 3/4"
Paper Stock	100 lb. coated text
Binding	white (default) or black metal twin-loop
Set-up	\$120 (t)

Accent colors change from month to month



Product Description

Tent-style calendar with your own custom picture every month and **full color imprint**. Features U.S. or Canadian holidays.

Qty 100 250 500 1000
Price 1 sided print 3.99 3.78 3.47 3.26

R

Additional Options

Back Print	black \$.30 (r), color \$.60 (r)
Grid Color Change	\$80 (t)
Custom Layout	\$120 (t) with print-ready art
Additional Months	add 7% per month
Envelopes	bubble env. \$.60 (t)
Physical Proof	\$30 (t). PDF proof no charge

MF-850 Tent-Style Calendar

Final Size	8 1/2" x 5 1/2"
Imprint Area	3" x 1 1/8", full color
Picture Area	3 7/8" x 3 5/8"
Paper Stock	100 lb. coated text
Binding	white (default) or black metal twin-loop
Set-up	\$120 (t)

Accent colors change from month to month



Product Description

Horizontal, tent-style calendar with your own custom picture alternating sides each month and a **full color imprint**. Features previous and next month previews and U.S. or Canadian holidays.

Qty 100 250 500 1000
Price 1 sided print 5.20 4.94 4.73 4.52

R

Additional Options

Back Print	black \$.40 (r), color \$.70 (r)
Grid Color Change	\$80 (t)
Custom Layout	\$120 (t) with print-ready art
Additional Months	add 7% per month
Envelopes	bubble env. \$.90 (t)
Physical Proof	\$30 (t). PDF proof no charge

MF-550 Tent-Style Calendar

Final Size	5 1/2" x 5 1/2"
Imprint Area	2" x 1 1/4", full color
Picture Area	4 1/2" x 2 7/8"
Paper Stock	100 lb. coated text
Binding	black (default) or white metal twin-loop
Set-up	\$120 (t)

Background color can be changed for \$90 (t) set-up



Product Description

Square tent-style calendar with your own custom picture every month and **full color imprint**. Calendar prints two-sided on a black background and is attached with black metal twin-loop binding to a black tent-style stand.

Qty 100 250 500 1000
Price 2 sided print 4.83 4.52 4.10 3.89

R

Additional Options

Background Color Change	\$90 (t)
Custom Layout	\$120 (t) with print-ready art
Additional Months	add 7% per month
Envelopes	bubble env. \$.60 (t)
Physical Proof	\$30 (t). PDF proof no charge

MF-880 Tent-Style Calendar

Final Size	8 1/2" x 4 1/2"
Imprint Area	2" x 3/4", full color
Picture Area	2 3/4" x 1 3/8" (front) 8 1/2" x 4 1/2" (back)
Paper Stock	100 lb. coated text
Binding	white (default) or black metal twin-loop
Set-up	\$120 (t)

*See note for "Calendars with week numbers" under the General Information section, page 39.



Product Description

This desk calendar features three months at-a-glance with week numbers. Your own custom picture is printed every month, front and back and a **full color imprint**.

Qty 100 250 500 1000
Price 2 sided print 5.72 5.46 5.25 5.04

R

Additional Options

Week No. Change	\$80 (t)
Week Start Change	\$200 (t)
Grid Color Change	\$80 (t)
Custom Layout	\$120 (t) with print-ready art
Additional Months	add 7% per month
Envelopes	bubble env. \$.90 (t)
Physical Proof	\$30 (t). PDF proof no charge

MF-750 Tent-Style Calendar

Final Size	5 1/4" x 8"
Imprint Area	4 1/2" x 3/4", full color
Picture Area	5 1/4" x 3 1/2"
Paper Stock	100 lb. coated text
Binding	white (default) or black metal twin-loop
Set-up	\$120 (t)

Product Description

Vertical, tent-style calendar with your own custom picture every month and **full color imprint**. Features previous and next month previews and U.S. or Canadian holidays.

Qty 100 250 500 1000
Price 1 sided print 5.51 5.25 5.04 4.83

R

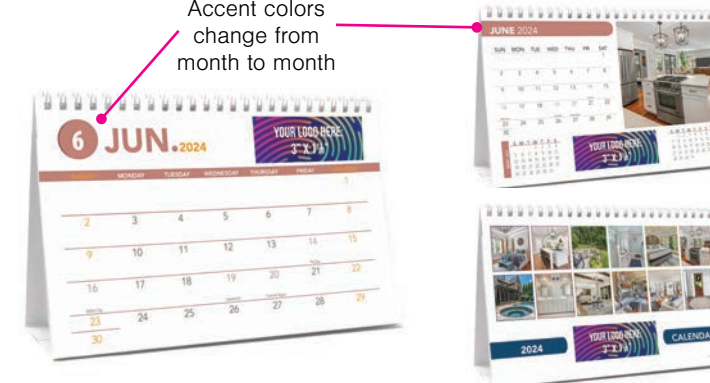
Additional Options

Back Print	black \$.40 (r), color \$.70 (r)
Grid Color Change	\$80 (t)
Custom Layout	\$120 (t) with print-ready art
Additional Months	add 7% per month
Envelopes	bubble env. \$.80 (t)
Physical Proof	\$30 (t). PDF proof no charge

MF-950 Tent-Style Calendar

Final Size	8 1/2" x 5 1/2"
Imprint Area	3" x 1 1/8", full color
Picture Area	3 7/8" x 3 5/8"
Paper Stock	100 lb. coated text
Binding	white (default) or black metal twin-loop
Set-up	\$120 (t)

Accent colors change from month to month



Product Description

Same design as our MF-850 for the cover and the front side of the calendar but with a full month printed on the back.

Qty 100 250 500 1000
Price 2 sided print 5.72 5.46 5.25 5.04

R

Additional Options

Grid Color Change	\$80 (t)
Custom Layout	\$120 (t) with print-ready art
Additional Months	add 7% per month
Envelopes	bubble env. \$.90 (t)
Physical Proof	\$30 (t). PDF proof no charge



WA-801 Wall Calendar

Final Size	11" x 17" (open) 11" x 8 1/2" (closed)
Imprint Area	6 1/4" x 1 1/4", full color
Picture Area	11" x 8 1/2"
Paper Stock	80 lb. coated cover
Binding	white (default) or black metal twin-loop
Set-up	\$120 (t)

Product Description

Large size, middle twin-loop bound wall calendar (11"x17" open) with your own custom picture every month. Features a **full color imprint** on every sheet, previous and next month previews, and U.S. or Canadian holidays.

Additional Options

Date Block	\$3 (t) per block, \$30 (t) minimum
Text Insertion	\$30 (t) minimum
Grid Color Change	\$80 (t)
Custom Layout	\$120 (t) with print-ready art
Additional Months	add 7% per month
Envelopes	bubble env. \$1.00 (t)
Physical Proof	\$30 (t). PDF proof no charge

Qty	100	250	500	1000
Price	8.66	8.14	7.35	6.83

R



WA-801T Wall Calendar

Final Size	11" x 17"
Imprint Area	5 5/8" x 1 1/2", full color
Picture Area	11" x 8 3/4"
Paper Stock	80 lb. coated cover
Binding	white (default) or black metal twin-loop
Set-up	\$120 (t)

Product Description

Large size, top bound wall calendar with your own custom picture every month. Features a **full color imprint** on every sheet, previous and next month previews, and U.S. or Canadian holidays. Metal hanger is attached to top for hanging.

Additional Options

Date Block	\$3 (t) per block, \$30 (t) minimum
Text Insertion	\$30 (t) minimum
Grid Color Change	\$80 (t)
Custom Layout	\$120 (t) with print-ready art
Additional Months	add 7% per month
Envelopes	stay-flat \$1.50 (t)
Physical Proof	\$30 (t). PDF proof no charge

Qty	100	250	500	1000
Price	11.55	10.56	9.57	9.02

R



WC-821 Wall Calendar

Final Size	8 1/2" x 11" (open) 8 1/2" x 5 1/2" (closed)
Imprint Area	4 1/4" x 3/4", full color
Picture Area	8 1/2" x 5 1/2"
Paper Stock	80 lb. coated cover
Binding	white (default) or black metal twin-loop
Set-up	\$120 (t)

Product Description

Mini size, middle twin-loop bound wall calendar (8 1/2" x 11" open) with your own custom picture every month. Features a **full color imprint** on every sheet, previous and next month previews, and U.S. or Canadian holidays.

Additional Options

Date Block	\$3 (t) per block, \$30 (t) minimum
Text Insertion	\$30 (t) minimum
Grid Color Change	\$80 (t)
Custom Layout	\$120 (t) with print-ready art
Additional Months	add 7% per month
Envelopes	bubble env. \$.80 (t)
Physical Proof	\$30 (t). PDF proof no charge

***Smaller than the traditional size but great for tight spaces and more economical!**

Qty	100	250	500	1000
Price	4.99	4.73	4.52	4.20

R

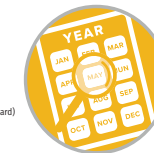


CUSTOM PHOTO CALENDARS

01

CHOOSE STYLE & START MONTH

- Select your calendar style.
- Pick any month to start. (12 consecutive months is standard)
- Additional months or inserts incur a 7% price increase.



02

STOCK OR FULLY CUSTOM?

- Stock Design:** Use our pre-designed template with your logo (supplied in vector format). We'll place your logo and crop any photos you send (300dpi (JPEGs recommended)).
- Fully Custom Design:** Download our template and create your own layout. Submit high-resolution, print-ready PDFs with outlined text, bleed area (no crop/bleed marks), and all template elements removed.



03

PREPARE YOUR ARTWORK

- Stock Design:** (Use our pre-designed template)
 - Label image files by month (e.g., 01_January.jpg)
 - Provide your vector logo artwork (PDF or EPS, fonts converted to outlines) sized for the imprint area.
 - Compress/Zip and submit all files: 300 dpi (JPEGs for each month (actual size) or a multi-page PDF with all pages in order text converted to outlines, and bleed area included (exclude crop marks).
- Fully Custom Design:** (Design the entire calendar)
 - Use the full-custom template we provide.
 - Zip and submit a print-ready, multi-page PDF or individual, properly labeled PDFs for each month and cover. Final files must include bleed area and exclude crop/bleed/printer marks. Alternatively, submit an InDesign package of your complete layout.



04

PO & ARTWORK SUBMISSION

For files under 10MB, email the ZIP with your artwork and PO to orders@atpress.com (cc: art@atpress.com). E-mail subject must have the PO number.

For larger files, use the artwork upload tool found on our website.



WP-201S Single Photo Wall Calendar

Final Size	11" x 17"
Picture Area	11" x 8 1/2", full color
Paper Stock	Top Panel: 10 pt C1S Calendar Grids: 50 lb offset
Binding	stapled
Set-up	\$80 (t) with print-ready art

Product Description

Single panel wall calendar with your custom full color photo/artwork and a 12 month, grayscale tear-off calendar pad. Calendar can begin any month and run for 12 months. Features U.S. or Canadian holidays, a small calendar preview of the previous and next month and a notes area.

Additional Options

Date Block Text Insertion	\$3 (t) per block, \$30 (t) minimum, plus \$.20 (r) run-charge
Custom Date Grids	\$120 (t) with print-ready art (grayscale), plus \$.20 (r) run-charge.
Additional Months	add 5% per month.
Envelopes	stay-flat \$1.50 (t)
Physical Proof	\$30 (t). PDF proof no charge
Metal Twin-loop Binding	add \$.50 (r)



Qty	100	250	500	1000
Price	3.15	2.94	2.73	2.63

R

WP-250 Single Photo Wall Calendar

Final Size	11" x 25 1/2" (open) 11" x 17" (closed)
Picture Area	11" x 8 1/2", full color
Paper Stock	Top Panel: 10 pt C1S Calendar Grids: 50 lb offset
Binding	white (default) or black metal twin-loop
Set-up	\$80 (t) with print-ready art

Product Description

Three month at-a-glance wall calendar with your custom full color photo/artwork on top panel and grayscale tear-off calendar pad. Calendar can begin any month and run for 12 months. Features U.S. or Canadian holidays and week numbers.

Additional Options

Date Block Text Insertion	\$3 (t) per block, \$30 (t) minimum, plus \$.30 (r) run-charge
Week No. Change	\$80 (t) plus \$.30 (r) run-charge
Week Start Change	\$200 (t) plus \$.30 (r) run-charge
Custom Date Grids	\$120 (t) with print-ready art (grayscale), plus \$.30 (r) run-charge
Additional Months	add 5% per month plus \$.30 (r) run-charge
Envelopes	stay-flat \$1.50 (t)
Physical Proof	\$30 (t). PDF proof no charge

Qty	100	250	500	1000
Price	4.83	4.62	4.41	4.20

R



*See note for "Calendars with week numbers" under the General Information section, page 39.



11" or 14"

31 1/2" or 39 1/2"

WP-401 Single Photo Wall Calendar

Final Size	11" x 31 1/2" (open), 11" x 8 1/2" (closed)
Picture Area	11" x 8", full color
Paper Stock	Top Panel: 12 pt C1S Calendar Grids: 50 lb offset
Binding	white (default) or black metal twin-loop
Set-up	\$80 (t) with print-ready art

Product Description

Four panel wall calendar with your custom full color photo/artwork on top panel and grayscale tear-off calendar pads. Calendar can begin any month and run for 12 months. Features 3 full view months, U.S. or Canadian holidays, and week numbers. Metal hanger is attached to top panel for hanging.

Additional Options

Date Block Text Insertion	\$3 (t) per block, \$30 (t) minimum, plus \$.50 (r) run-charge
Custom Date Grids	\$120 (t) with print-ready art (grayscale), plus \$.50 (r) run-charge
Week No. Change	\$80 (t) plus \$.50 (r) run-charge
Week Start Change	\$200 (t) plus \$.50 (r) run-charge
Date Slider	\$1.10 (t)
Envelopes	stay-flat \$1.10 (t)
Physical Proof	\$30 (t). PDF proof no charge

Qty	100	250	500	1000
Price	10.29	9.87	9.35	8.82

R

WP-402 Single Photo Wall Calendar

Final Size	14" x 39 1/2" (open), 14" x 10 1/2" (closed)
Picture Area	14" x 10", full color
Paper Stock	Top Panel: 12 pt C1S Calendar Grids: 50 lb offset
Binding	white (default) or black metal twin-loop
Set-up	\$80 (t) with print-ready art

Product Description

Four panel wall calendar with your custom full color photo/artwork on top panel and grayscale tear-off calendar pads. Calendar can begin any month and run for 12 months. Features 3 full view months, U.S. or Canadian holidays, and week numbers. Metal hanger is attached to top panel for hanging.

Additional Options

Date Block Text Insertion	\$3 (t) per block, \$30 (t) minimum, plus \$.55 (r) run-charge
Custom Date Grids	\$120 (t) with print-ready art (grayscale), plus \$.55 (r) run-charge
Week No. Change	\$80 (t) plus \$.55 (r) run-charge
Week Start Change	\$200 (t) plus \$.55 (r) run-charge
Physical Proof	\$30 (t). PDF proof no charge

Qty	100	250	500	1000
Price	14.18	13.13	12.08	11.55

R

*Our calendars follow the United States calendar rules. Sunday is the first day of week and Saturday is the last day of the week. The first week of the year is the week that contains January 1st, the first day of the year. If you wish to have anything different an artwork set-up will apply along with a run charge.

See page 3 for our new acrylic stand calendar

STOCK PHOTO CALENDARS

Stock photo calendars allow the client to choose from a Nature, Floral, Seasonal, or Motivational stock image set with one of our select stock photo calendar styles. Each calendar includes a full color imprint on the cover and on each month.



DESK CALENDARS



MC-400 CD Case Calendar

Final Size	4 5/8" x 5 7/16"
Imprint Area	1 3/4" x 1 1/2", full color
Paper Stock	80 lb. coated cover
Set-up	\$40 (t) with print-ready art

Product Description

Calendar is 12 loose monthly sheets plus a cover with your choice of one stock image set. The sheets are inserted into a clear CD jewel case that works as the calendar stand when the lid is flipped back to a 45° angle. Each page comes with a full color imprint and U.S. or Canadian holidays.

Qty	100	250	500	1000	2500
Price <small>1 sided print</small>	3.89	3.62	3.47	3.31	3.15

R



MF-200 Tent-Style Calendar

Final Size	5 1/2" x 2 5/8"
Imprint Area	2" x 3/4", full color
Paper Stock	100 lb. coated text
Binding	white (default) or black metal twin-loop
Set-up	\$40 (t) with print-ready art

Product Description

Mini tent-style calendar with your choice of one stock image set and full color imprint each month.

Qty	100	250	500	1000
Price <small>1 sided print</small>	3.57	3.26	3.05	2.89

R



MF-400 Tent-Style Calendar

Final Size	4 3/4" x 5 1/4"
Imprint Area	1 3/4" x 1 1/2", full color
Paper Stock	100 lb. coated text
Binding	white (default) or black metal twin-loop
Set-up	\$40 (t) with print-ready art

Product Description

Tent-style calendar with your choice of one stock image set. Features full color imprint on every sheet and U.S. or Canadian holidays.

Qty	100	250	500	1000
Price <small>1 sided print</small>	3.99	3.78	3.47	3.26

R



MF-800 Tent-Style Calendar

Final Size	8 1/2" x 5 1/2"
Imprint Area	3" x 1 1/8", full color
Paper Stock	100 lb. coated text
Binding	white (default) or black metal twin-loop
Set-up	\$40 (t) with print-ready art

Product Description

Tent-style calendar with your choice of one stock image set. Images alternate sides each month. Features previous and next month previews, full color imprint, and U.S. or Canadian holidays.

Qty	100	250	500	1000
Price <small>1 sided print</small>	5.20	4.94	4.73	4.52

R

NOTE: image sets below are for non-name personalized calendar styles only. For name personalized image sets see pages 10-13

WA-800 Wall Calendar

Final Size	11" x 17" (open) 11" x 8 1/2" (closed)
Imprint Area	6 1/4" x 1 1/4", full color
Picture Area	11" x 8 1/2"
Paper Stock	80 lb. coated cover
Binding	white (default) or black metal twin-loop
Set-up	\$40 (t) with print-ready art

Product Description

Large size, middle twin-loop bound wall calendar (11"x17" open) with your choice of one stock image set. Features a full color imprint on every sheet, previous and next month previews, and U.S. or Canadian holidays.



Qty	100	250	500	1000
Price	8.66	8.14	7.35	6.83

R



WA-800T Wall Calendar

Final Size	11" x 17"
Imprint Area	5 5/8" x 1 1/2", full color
Picture Area	11" x 8 3/4"
Paper Stock	80 lb. coated cover
Binding	white (default) or black metal twin-loop
Set-up	\$40 (t) with print-ready art

Product Description

Large size, top bound wall calendar with your choice of one stock image set. Features a full color imprint on every sheet, previous and next month previews, and U.S. or Canadian holidays. Metal hanger is attached to the top for hanging.



Qty	100	250	500	1000
Price	11.55	10.56	9.57	9.02

R



WC-820 Wall Calendar

Final Size	8 1/2" x 11" (open) 8 1/2" x 5 1/2" (closed)
Imprint Area	4 1/4" x 3/4", full color
Picture Area	8 1/2" x 5 1/2"
Paper Stock	80 lb. coated cover
Binding	white (default) or black metal twin-loop
Set-up	\$40 (t) with print-ready art

Product Description

Mini size, middle twin-loop bound wall calendar (8 1/2" x 11" open) with your choice of one stock image set. Features a full color imprint on every sheet, previous and next month previews, and U.S. or Canadian holidays.



***Smaller than the traditional size but great for tight spaces and more economical!**

Qty	100	250	500	1000
Price	4.99	4.73	4.52	4.20

R



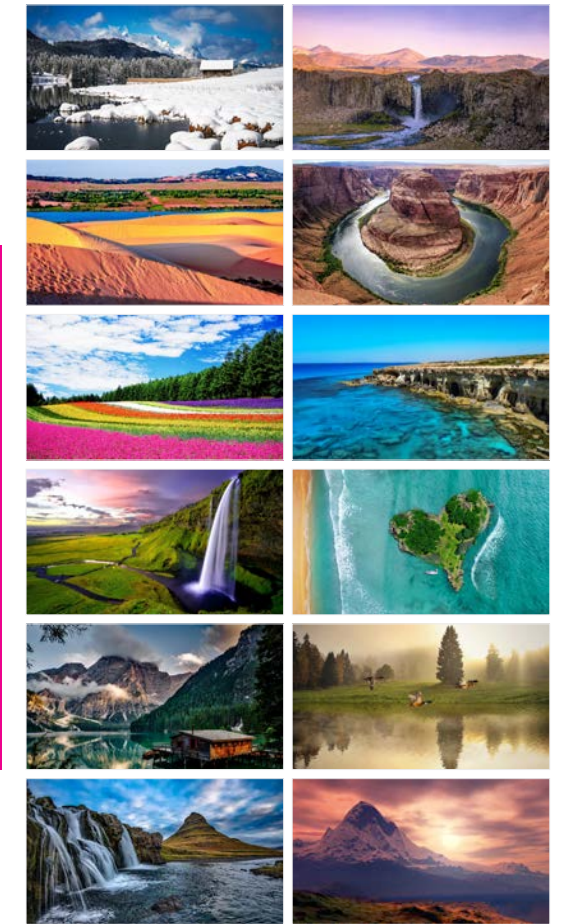
MOTIVATIONAL



FLORAL



NATURE



SEASONAL

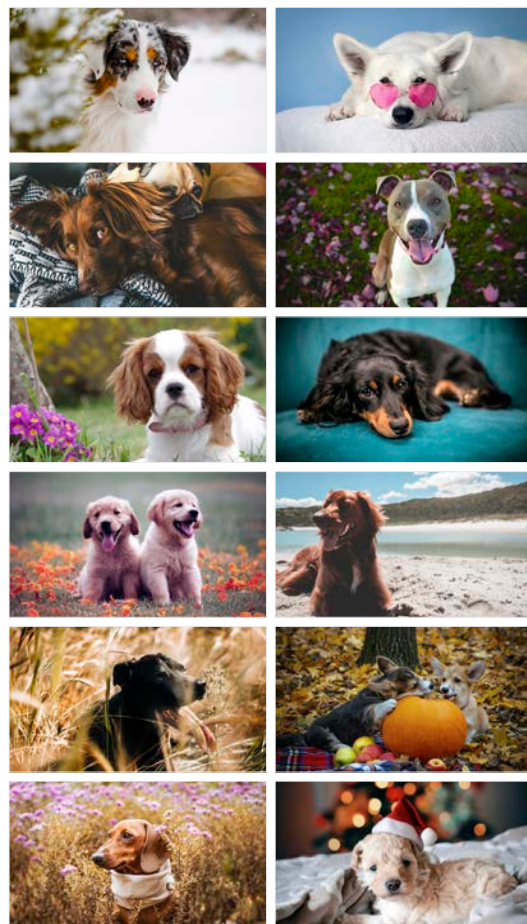


NOTE: image sets below are for non-name personalized calendar styles only. For name personalized image sets see pages 10-13.

BIRDS



DOGS



SEALIFE



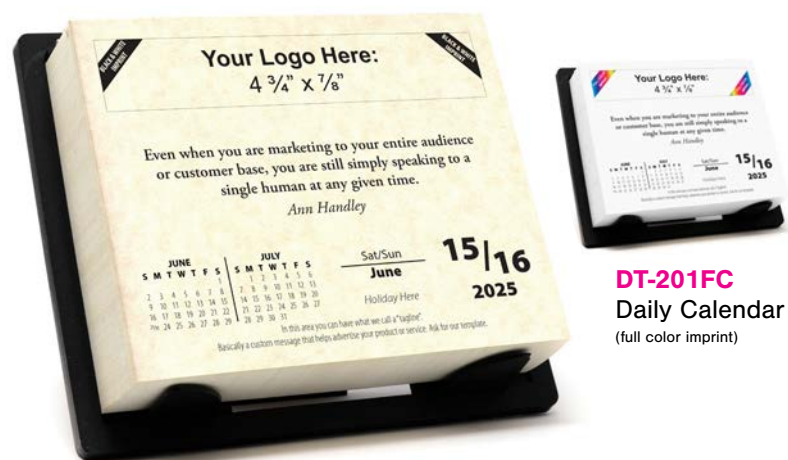
US MONUMENTS



DAILY CALENDARS

The daily-date, tear-off calendar is padded and adhered to a polypropylene stand. A different positive quote for each date in the year is printed in the middle of the calendar. It also includes standard U.S. holidays and the current and next month mini-calendar references. Saturday and Sunday each week are combined for a total page count of 314. Black logo imprint in every sheet, up to 30 rotating tag lines, choice of 5 stock paper backgrounds, and choice of stock, full-color cover or custom cover (if art is provided print-ready) included in the standard price. Custom content is available for a \$350 (t) setup charge. Custom layouts and colored logos are quoted on a case by case basis.

DT-201 Daily Calendar (black imprint)



DT-201FC
Daily Calendar
(full color imprint)

DT-203 Daily Calendar (black imprint)



DT-203FC
Daily Calendar
(full color imprint)

DT-207 Daily Calendar (black imprint)



DT-207FC
Daily Calendar
(full color imprint)

Description

The daily-date, tear-off calendar is padded and adhered to your choice of color polypropylene stand. A different positive quote for each date in the year is printed in the middle of the calendar. It also includes standard U.S. holidays and the current and next month mini-calendar references. Saturday and Sunday each week are combined for a total page count of 314. Logo imprint on every sheet, up to 30 rotating tag lines, choice of 5 stock paper backgrounds, and choice of stock, full-color cover or custom cover (if art is provided print-ready) included in the standard price.

Specifications

Final Size	5 1/4 x 4 1/4
Imprint Area	varies per style
Start Month	start any month and run for 12 months
Paper Stock	50 lb offset
Stand Color	black (default), blue or clear
Standard Set-up	\$40 (t)
Finishing	padded, attached to your choice of stand and individually shrink wrapped
tag lines	up to 30 included at no charge. tag lines over 30: \$3 (t) each
Custom Quotes	\$350 (t). Please download the template from our website
Mailing Boxes	corrugated box \$.70 (t), shipped separately (not inserted)
Packed	36 per box at approx. 32 lbs.
Box Size	16" x 13" x 9"

Black Imprint:

DT-201 | DT-203 | DT-207

Qty	100	250	500	1000	2500
Price	9.90	9.40	9.00	8.60	8.20

Full Color Imprint: *White paper only

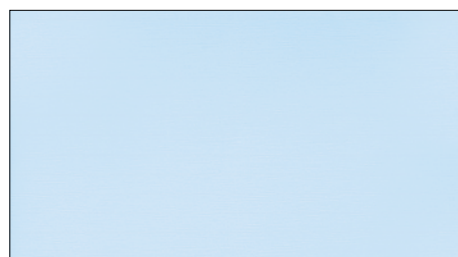
DT-201FC | DT-203FC | DT-207FC

Qty	100	250	500	1000	2500
Price	13.40	12.90	12.50	12.10	11.70

Additional Options

PMS Color Logo	Please call/e-mail for quote
Fully Custom Design	Please call/e-mail for quote

Paper Stock Choices



Blue



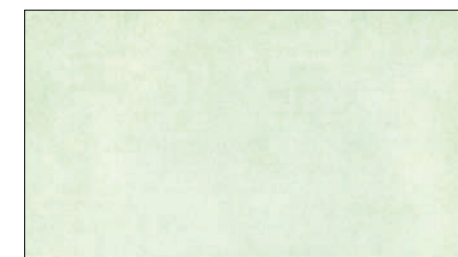
White



Clouds



Parchment



Green

Stock Cover Choices

*A custom cover can be printed at no extra cost if print-ready art is provided.



Blue with Gold Bow



Endless Gratitude



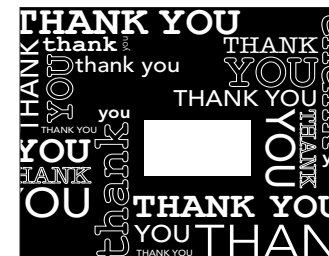
Red with Gold Bow



Happy Holidays



Season's Greetings



Thank You

Boxes



Corrugated Mailing Box
\$.70 (t) any quantity (not inserted)



Gold Bow Gift Box
(calendars inserted)
\$.80 (t) any quantity



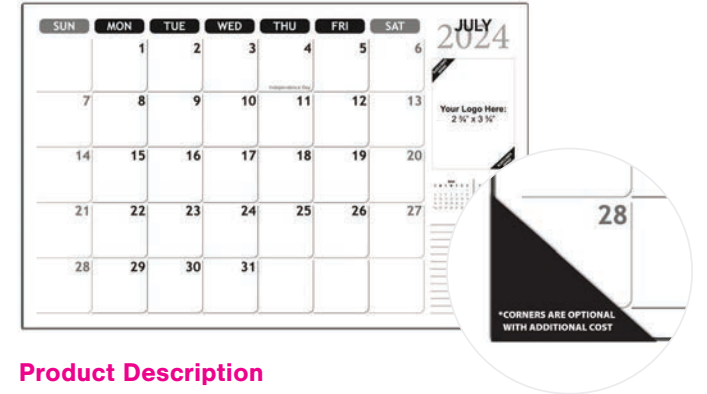
BLACK DESK PAD - 17"X11"

DP-301 Desk Pad Calendar

Final Size	17" x 11"
Imprint Area	2 3/4" x 3 3/4", black only
Start Month	start any month and run for 12
Paper Stock	60 lb. offset
Set-up	\$30 (t) with print-ready art

Additional Options

Date Block Text Insertion	\$3 (t) per block, \$30(t) min.
Custom Calendar	\$60 (t) with print-ready, customer provided artwork.
Additional Months	add 5% per month
Envelopes	stay-flat \$1.50 (t)
Black Corners	\$.70 (t)



Product Description

12 month, 17" x 11" black imprint desk pad. Features previous and next month previews and U.S. holidays.

Qty 	100	250	500	1000
Price 	2.94	2.73	2.52	2.42

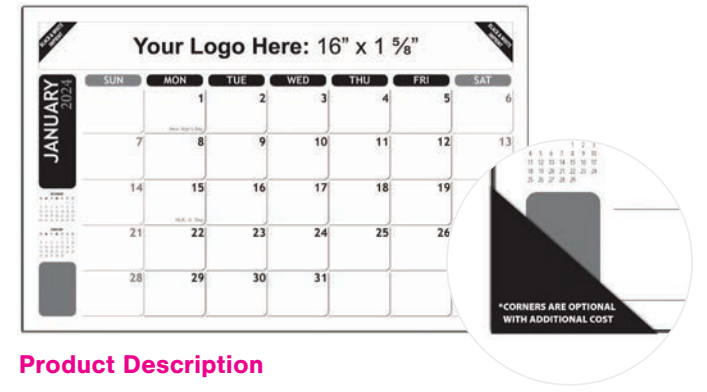
R

DP-303 Desk Pad Calendar

Final Size	17" x 11"
Imprint Area	16" x 1 5/8", black only
Start Month	start any month and run for 12
Paper Stock	60 lb. offset
Set-up	\$30 (t) with print-ready art

Additional Options

Date Block Text Insertion	\$3 (t) per block, \$30(t) min.
Custom Calendar	\$60 (t) with print-ready, customer provided artwork.
Additional Months	add 5% per month
Envelopes	stay-flat \$1.50 (t)
Black Corners	\$.70 (t)



Product Description

12 month, 17" x 11" black imprint desk pad. Features previous and next month previews and U.S. holidays.

Qty 	100	250	500	1000
Price 	2.94	2.73	2.52	2.42

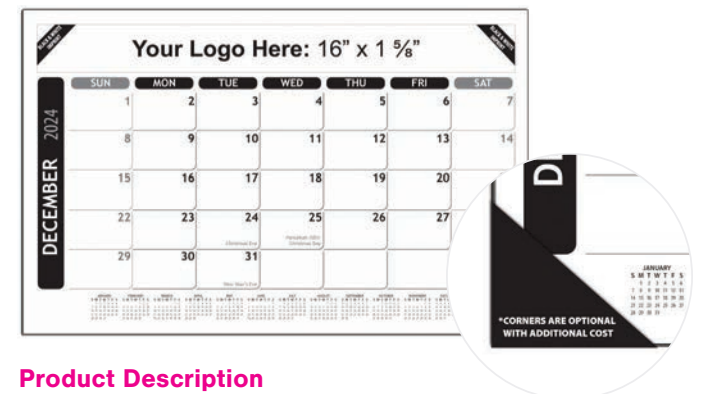
R

DP-305 Desk Pad Calendar

Final Size	17" x 11"
Imprint Area	16" x 1 5/8", black only
Start Month	start any month and run for 12
Paper Stock	60 lb. offset
Set-up	\$30 (t) with print-ready art

Additional Options

Date Block Text Insertion	\$3 (t) per block, \$30(t) min.
Custom Calendar	\$60 (t) with print-ready, customer provided artwork.
Additional Months	add 5% per month
Envelopes	stay-flat \$1.50 (t)
Black Corners	\$.70 (t)



Product Description

12 month, 17" x 11" black imprint desk pad. Features a full year at-a-glance calendar on bottom and U.S. holidays.

Qty 	100	250	500	1000
Price 	2.94	2.73	2.52	2.42

R

DESK PAD CALENDARS

Our desk pad calendars are top glue-bound with a chipboard backer. They show an entire month per page with squares large enough to make notes. Each calendar style includes an imprint area on every page for your client's logo.



FULL COLOR DESK PAD - 17"X12"

DP-202 Full Color Desk Pad Calendar

Final Size	17" x 12"
Imprint Area	16" x 2", full color
Start Month	start any month and run for 12
Paper Stock	70 lb. offset
Set-up	\$30 (t) with print-ready art

Additional Options

Date Block Text Insertion	\$3 (t) per block, \$30(t) min.
Custom Calendar	\$60 (t) with print-ready, customer provided artwork.
Additional Months	add 5% per month
Envelopes	stay-flat \$1.50 (t)
Grid Color Change	\$80 (t)
Black Corners	Included, deduct \$.70 (t) for no corners



Product Description

12 month, 17" x 12" full color imprint desk pad. Top glue-bound with a chipboard backer. Features previous and next month previews, black corners, and U.S. holidays.

Qty 	100	250	500	1000
Price 	6.72	6.20	5.67	5.36

R

DP-205 Full Color Desk Pad Calendar

Final Size	17" x 12"
Imprint Area	16" x 2 1/2", full color
Start Month	start any month and run for 12
Paper Stock	70 lb. offset
Set-up	\$30 (t) with print-ready art

Additional Options

Date Block Text Insertion	\$3 (t) per block, \$30(t) min.
Custom Calendar	\$60 (t) with print-ready, customer provided artwork.
Additional Months	add 5% per month
Envelopes	stay-flat \$1.50 (t)
Grid Color Change	\$80 (t)
Black Corners	Included, deduct \$.70 (t) for no corners



Product Description

12 month, 17" x 12" full color imprint desk pad. Top glue-bound with a chipboard backer. Features a full year-at-a-glance on the bottom, black corners, and U.S. holidays.

Qty 	100	250	500	1000
Price 	6.72	6.20	5.67	5.36

R

DP-203 Nat'l Holidays Desk Pad Calendar

Final Size	17" x 11 1/2"
Imprint Area	2 7/8" x 3 1/8", full color
Start Month	start any month and run for 12
Paper Stock	70 lb. offset
Set-up	\$30 (t) with print-ready art

Additional Options

Date Block Text Insertion	\$3 (t) per block, \$30(t) min.
Custom Calendar	\$60 (t) with print-ready, customer provided artwork.
Additional Months	add 5% per month
Envelopes	stay-flat \$1.50 (t)
Grid Color Change	\$80 (t)
Black Corners	Included, deduct \$.70 (t) for no corners



Product Description

12 month, 17" x 11.5" full color imprint desk pad with full bleed seasonal backgrounds. Features fun National Holidays and standard US holidays and notes area.

Qty 	100	250	500	1000
Price 	6.72	6.20	5.67	5.36

R



MISCELLANEOUS



In addition to calendars, we also supply a variety of other products to fulfill your marketing plans. These include scratch pads with name personalization and variable data options, notepads, posters, and puzzle books. Most of these products are completely customizable to fit your specific needs.

Black Imprint Scratch Pads

Black and White Imprint | Print-ready artwork required

Product Description

Digitally printed scratch pads with 30 sheets. Variable data included with print-ready artwork provided.

**Full bleed is not included in the standard size prices. To accommodate bleed at no extra cost, we can undersize your design by 1/4" on each side. If undersizing is not an option, adding bleed will increase the unit cost by 10%.*

Specifications

Method of Imprint	Digital Black Imprint
Binding	glued on short side with 22 pt. chipboard backing
Physical Proof	\$30 (t). PDF proof no charge
Paper Stock	50 lb. offset
Set-up	\$20 (t) with print-ready artwork, no bleed
Tag lines	Included, with print-ready artwork
Sheets per Pad	30 sheets standard.
Upgrade to 50 Sheets per pad	Add 40% to unit price
Name Personalized Pads	\$150 (t) setup, plus 10% run charge. Call for art requirements
Shrink Wrapping	\$.20 (t) per bundle
Different Design on Each Sheet	Included, with print-ready artwork, no bleed
Magnets	\$.30 (t) for SP-310, SP-315 and SP-320. \$.40 (t) for SP-330
Full Bleed	*Add 10% to unit price or undersize

Full Color Imprint Scratch Pads

Full Color Imprint | Print-ready artwork required

Product Description

Digitally printed scratch pads with 30 sheets. Variable data included with print-ready artwork provided.

Specifications

Method of Imprint	Digital Full Color
Binding	glued on short side with 22 pt. chipboard backing
Physical Proof	\$30 (t). PDF proof no charge
Paper Stock	60 lb. offset
Set-up	\$20 (t) with print-ready artwork, no bleed
Tag lines	Included, with print-ready artwork
Sheets per Pad	30 sheets standard.
Upgrade to 50 Sheets per pad	Add 40% to unit price
Name Personalized Pads	\$150 (t) setup, plus 10% run charge. Call for art requirements
Shrink Wrapping	\$.20 (t) per bundle
Different Design on Each Sheet	Included, with print-ready artwork, no bleed
Magnets	\$.30 (t) for SP-210, SP-215 and SP-220. \$.40 (t) for SP-230
Full Bleed	*Add 10% to unit price or undersize



WHAT ARE TAGLINES?

Basically short, custom messages that help promote your products or services.



***Custom sizes available. E-mail for a custom quote.**

***Custom sizes available. E-mail for a custom quote.**

Style	Size	Quantity			
		100	250	500	1000
SP-310	3 2/5" x 5 1/2"	1.00	0.90	0.80	0.75
SP-315	4 1/4" x 5 1/2"	1.10	1.00	0.90	0.85
SP-320	3 2/3" x 8 1/2"	1.30	1.20	1.10	1.05
SP-325	4 1/4" x 11"	1.35	1.25	1.20	1.15
SP-330	5 1/2" x 8 1/2"	1.35	1.25	1.20	1.15

R

Style	Size	Quantity			
		100	250	500	1000
SP-210	3 2/5" x 5 1/2"	1.40	1.30	1.25	1.20
SP-215	4 1/4" x 5 1/2"	1.60	1.45	1.35	1.30
SP-220	3 2/3" x 8 1/2"	2.00	1.80	1.70	1.60
SP-225	4 1/4" x 11"	2.50	2.40	2.30	2.20
SP-230	5 1/2" x 8 1/2"	2.50	2.40	2.30	2.20

R



NP-400 Notebook

Size: 3" x 4 1/4"

*Add 10% to unit price for a full bleed imprint

Qty	100	250	500	1000	2500
Price 1 sided print	2.08	1.97	1.87	1.76	1.68

R



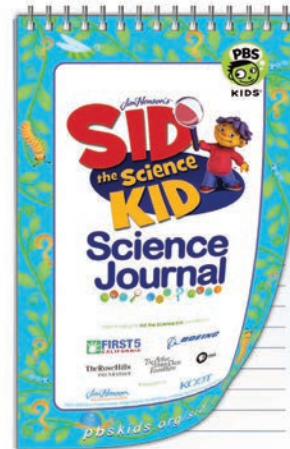
NP-410 Notebook

Size: 3 2/3" x 8 1/2"

*Add 10% to unit price for a full bleed imprint

Qty	100	250	500	1000	2500
Price 1 sided print	2.54	2.31	2.21	2.08	2.00

R



NP-420 Notebook

Size: 5 1/2" x 8 1/2"

*Add 10% to unit price for a full bleed imprint

Qty	100	250	500	1000	2500
Price 1 sided print	3.12	2.89	2.54	2.25	2.14

R

Product Description

Our notebooks come with a full color imprint on the front cover, 40 ruled sheets and a chipboard backer. They are bound on the short dimension with white (default) or black metal twin-loop binding.

*No bleed allowed unless quoted.

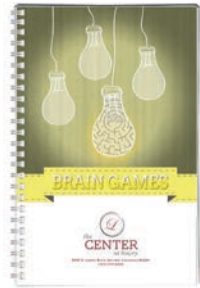
Specifications

Cover Imprint	full color, no bleed is standard
Full Bleed on Front Cover	add 10%
Sheets per Pad	40 ruled sheets per pad
Binding	white (default) or black metal twin-loop
Plastic Coil	add \$.30 (t)
Cover Stock	80 lb coated cover
Inside Sheets Stock	50 lb offset
Custom Print on Inside Sheets	add 10%, black print
Back Cover	add 5%
Set-up	\$30 (t) with print-ready artwork
Physical Proof	\$30 (t). PDF proof no charge.

***Custom sizes available. E-mail for a custom quote.**

Small Print

BG-100



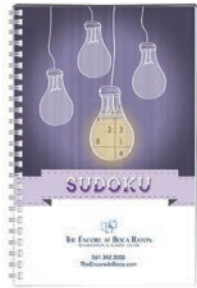
(mazes, cryptograms & word scrambles)

MG-100

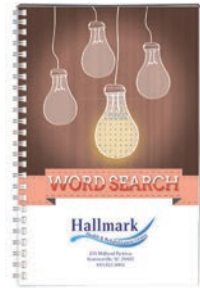


(crossword, word search & sudoku)

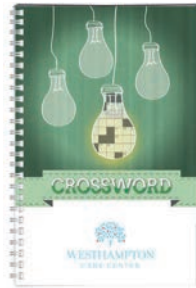
SU-100



WS-100



CW-100



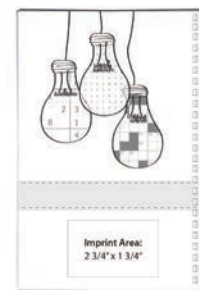
Product Description

Small print (100 series) puzzle books come with 50 puzzles per book with full solution guide on back. Books come with a full color digital imprint on front and back cover.

Qty	100	250	500	1000
Price	2.89	2.71	2.54	2.37

R

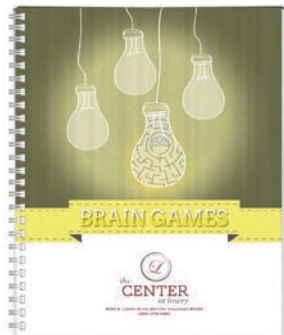
Final Size	5 1/2" x 8 1/2"
Imprint Size	2 3/4" x 1 3/4", full color
Binding	white metal twin-loop
Number of Puzzles	50 per book
Cover Paper Stock	80 lb coated cover
Inside Paper Stock	50 lb offset
Set-up	\$30 (t)
Custom Cover Artwork	\$60 (t) with print-ready artwork provided for front and back covers
Physical Proof	\$30 (t). PDF proof no charge.



Back Cover Sample

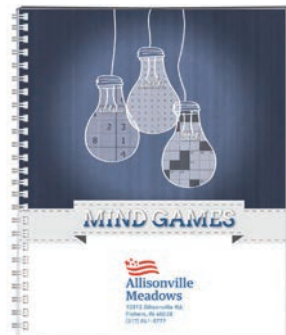
Large Print

BG-200



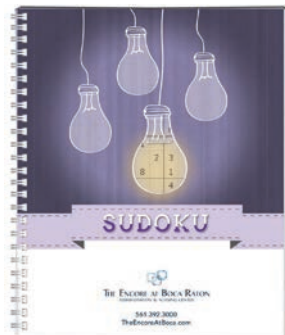
(mazes, cryptograms & word scrambles)

MG-200

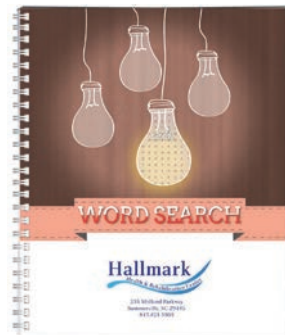


(crossword, word search & sudoku)

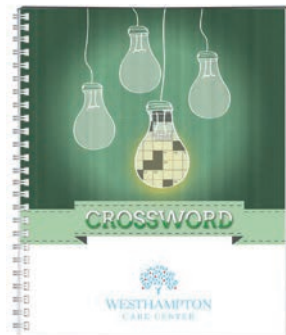
SU-200



WS-200



CW-200



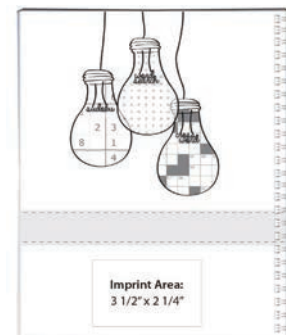
Product Description

Large print (200 series) puzzle books come with 50 puzzles per book with full solution guide on back. Books come with a full color digital imprint on front and back cover.

Qty	100	250	500	1000
Price	4.50	4.22	4.04	3.81

R

Final Size	8 1/2" x 11"
Imprint Size	3 1/2" x 2 1/4", full color
Binding	white metal twin-loop
Number of Puzzles	50 per book
Cover Paper Stock	80 lb coated cover
Inside Paper Stock	50 lb offset
Set-up	\$30 (t)
Custom Cover Artwork	\$60 (t) with print-ready artwork provided for front and back covers
Physical Proof	\$30 (t). PDF proof no charge.



Back Cover Sample

GENERAL INFORMATION

Pricing: Due to fluctuations in material costs, pricing in this catalog may not be current. Please refer to online pricing for current costs.

Method of Imprinting: Digital printing. We can approximate PMS colors, but we cannot guarantee exact matches.

Artwork: We require print-ready artwork for all our products. Faxes, photocopies, business cards, newsprint, or art requiring resizing, scanning, typesetting, or editing are not considered print-ready. All art files should be aggregated into a single folder and compressed as a .zip file. For art that includes text as part of the design, we recommend vector based art (PDF, EPS) in order to achieve the best results possible (ex. picture with a caption/title overlaid on top). We also recommend vector art for the logo imprint area. Please convert ALL type to outlines or curves as this will avoid any font issues. However, when vector art is not available and you must send rasterized images for logos and text, art should be 900-1200 dpi and should always be sent at 100% or larger of the finished print size. We accept JPG, EPS and PDF. When submitting your own fully custom calendar design, supported programs include Adobe Suite CC or a print ready PDF which includes the bleed area but no print marks. If non-print-ready submitted art requires modifications or typesetting and we have an editable file, additional work may incur a fee of \$100 (t) per hour or, in some cases, a flat fee of \$30 (t) for typesetting or modifications.

Calendars with week numbers: Our calendars follow the United States calendar rules. Sunday is the first day of week and Saturday is the last day of the week. The first week of the year is the week that contains January 1st, the first day of the year. If you wish to have anything different an artwork set-up will apply along with a run charge.

Acknowledgments: Order acknowledgments will be sent by e-mail. Orders will be put into production based on acknowledgment specifications unless otherwise advised.

Packaging: All daily calendars are shrink wrapped prior to boxing. Other items can be shrink wrapped at a cost of \$.30 (t) if desired. In an effort to reduce environmental waste, we sometimes reuse corrugated cartons for shipping product.

Shipping: Shipped either UPS ground or truck (usually over 1200 lbs) from our factory in Tennessee. Shipments are at published rates or discounted hundredweight rates if over 200 lbs. We do not charge a handling fee. The drop ship charge for multiple locations is \$6 (t) for domestic shipments (no charge for single, domestic location) and \$10 (t) for international shipments. For personalized products, an additional \$.20 (t) per calendar to sort by location applies.

Mailing Services: Mailing services, for both standard rate and first class, are available. Please inquire for current rates. Standard rate mailings have a minimum of 200 pieces.

Overruns/Underruns: Our overrun/underrun policy is +/- 5% on most orders. Custom orders requiring special inks are subject to the printing industry standard of +/- 10%. Add 3% for exact quantities. Name Personalized calendars are shipped exact quantity.

Production Time: Production times vary by product, by quantity ordered, and by time of year. If a delivery time is important, please discuss the production schedule with our customer service department prior to placing your order. Typical production time during the months of October-December is 15-20 business days.

***PLEASE NOTE: YOUR P.O. DOES NOT DICTATE PRODUCTION TIME.**

Rush Orders: It is our general policy to do everything possible to serve the customer's needs. If we can meet a rush delivery without causing inefficiencies in our production process (such as excessive overtime, rush order of materials, etc), then we will produce a rush order without any surcharge. If a rush situation does involve extra cost, then any surcharges will be quoted on a case by case basis.

Errors/Corrections: If an order contains an error that is the fault of the factory, then we will repair or replace the product or issue a refund. We will generally cover the cost of standard ground freight as well. We are not responsible for expedited freight costs. If an error is the fault of the customer, we often offer to rerun the order at a discount to lessen the financial burden of an error.

CUSTOM PROJECTS ARE WELCOME!

We welcome completely custom projects in all sorts of custom sizes. Please email info@bkpress.com with detailed specifications to get a custom quote on your next project.

