



 point grey™  
by Edwards



**STRETCH.  
RELAX.  
PERFORM.  
STYLE.**



**Modern arrivals.**

The new Point Grey™ line is a fresh take on business casual apparel where fashion meets function. These crazy, comfortable designs make you feel like you're wearing your favorite joggers while you look polished and meeting-ready. Combining upscale designs and a more tailored fit with incredible ergonomics and an extended range of motion allows you to go seamlessly from work life to real life without a wardrobe change.



SUSTAINABLE



EASY CARE



HOME LAUNDRY

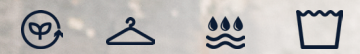


MOISTURE  
WICKING



# Point Grey Polos

**NEW STYLE**



**FEATURES:**

- 45% Recycled Polyester/  
45% Polyester/10% Spandex
- Self-fabric collar with collar stand
- Hemmed sleeves and bottom with  
side vents

**SIZES**

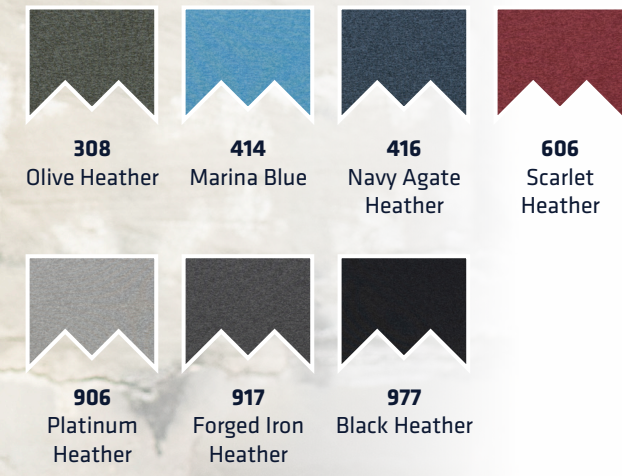
Men's S - 3XL, 4XLT  
Ladies' XS - 3XL

**FIT**

Tailored

**COLORS**

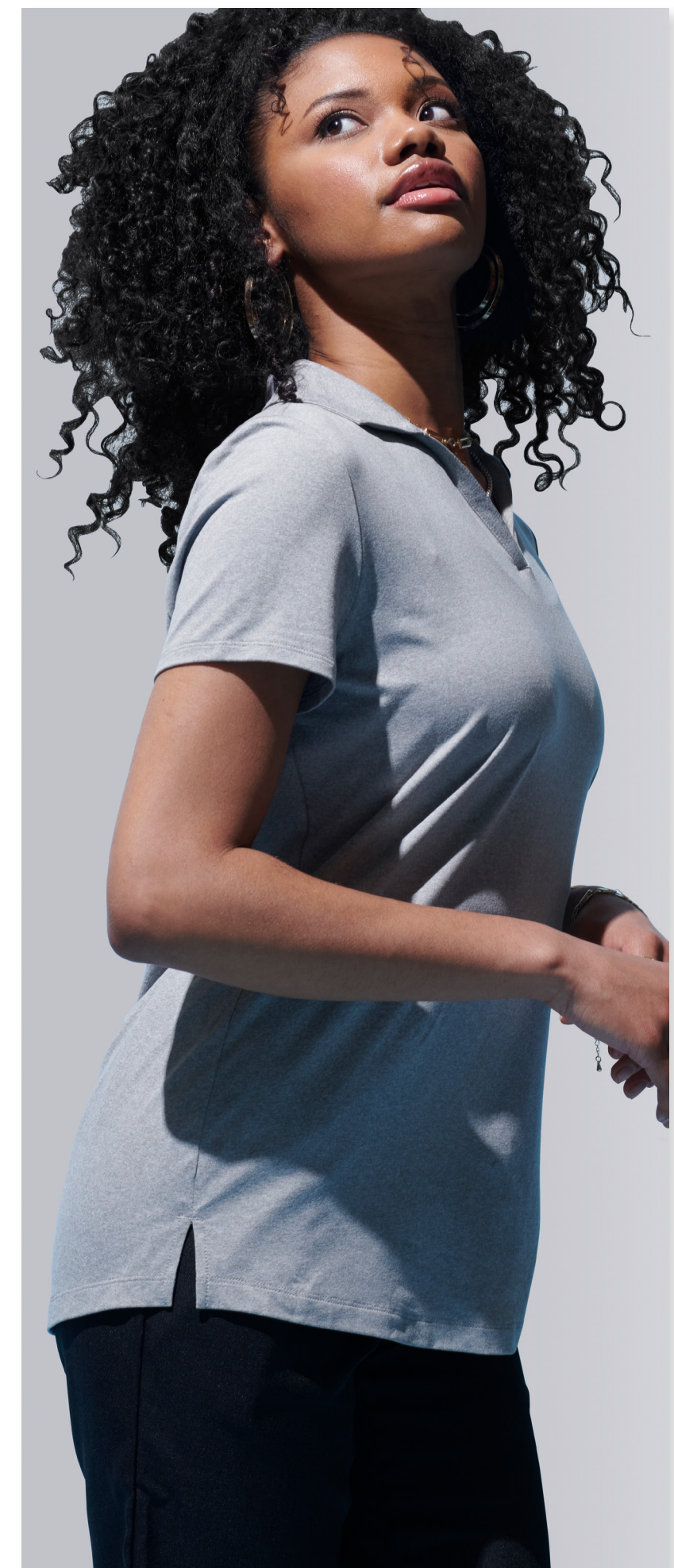
308 Olive Heather, 414 Marina Blue,  
416 Navy Agate Heather, 606 Scarlet  
Heather, 906 Platinum Heather,  
917 Forged Iron Heather,  
977 Black Heather



5592 Ladies' Point Grey Polo **\$27.00**

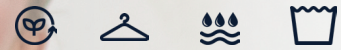


1592 Men's Point Grey Polo **\$27.00**



# Point Grey Double Knit 1/4-Zips

**NEW STYLE**



## FEATURES:

- 45% Recycled Polyester/  
45% Polyester/10% Spandex
- Self-fabric collar with collar stand
- Hemmed sleeves and bottom with  
side vents

## SIZES

Men's S - 3XL, 4XLT

Ladies' XS - 3XL

## FIT

Tailored

## COLORS

308 Olive Heather, 416 Navy Agate  
Heather, 606 Scarlet Heather,  
917 Forged Iron Heather,  
977 Black Heather



**308**  
Olive Heather

**416**  
Navy Agate  
Heather

**606**  
Scarlet  
Heather



**906**  
Platinum  
Heather

**917**  
Forged Iron  
Heather

**977**  
Black Heather



6482 Ladies' Point Grey 1/4-Zip **\$55.50**



3482 Men's Point Grey 1/4-Zip **\$55.50**



# Point Grey Wrap Dress

**NEW STYLE**



## FEATURES:

- 95% Recycled Polyester/  
5% Spandex
- Full wrap tie closure with crossover
- V-neckline
- Fully lined
- Two side seam pockets

## SIZES

Ladies' XS - 3XL

## FIT

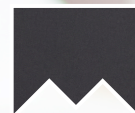
Tailored

## COLORS

010 Black, 097 Forged Iron, 431 Navy  
Agate



**010**  
Black



**097**  
Forged Iron



**431**  
Navy Agate



9977 Ladies' Point Grey Wrap Dress **\$99.98**



# Point Grey Shirts

## NEW COLORS



### FEATURES:

- 52% Polyester/36% Recycled Polyester/12% Spandex
- Four-way stretch fabric
- Non-iron

### SIZES

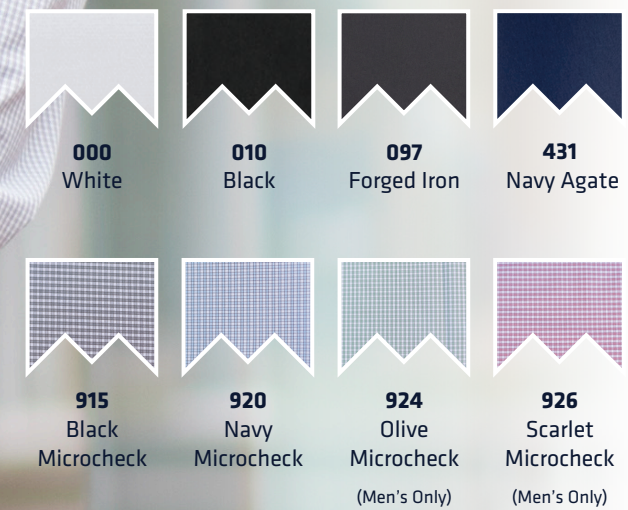
Men's S - 3XL, MT - 4XLT  
Ladies' XXS - 3XL

### FIT

Tailored

### COLORS

000 White, 010 Black, 097 Forged Iron, 431 Navy Agate, 915 Black Microcheck (new), 920 Navy Microcheck (new), 924 Olive Microcheck (new), 926 Scarlet Microcheck (new)



5272 Ladies' Point Grey Shirt **\$53.90**



1972 Men's Point Grey Shirt **\$53.90**





# Point Grey Blazers

**NEW STYLE**



**FEATURES:**

- 57% Recycled Polyester/  
43% Sorona Polyester
- Four-way stretch
- Antimicrobial, quick drying fabric

**SIZES**

Men's S - 4XL (Regular, Long)  
Ladies' XS - 3XL (Regular, Tall)

**FIT**

Tailored

**COLORS**

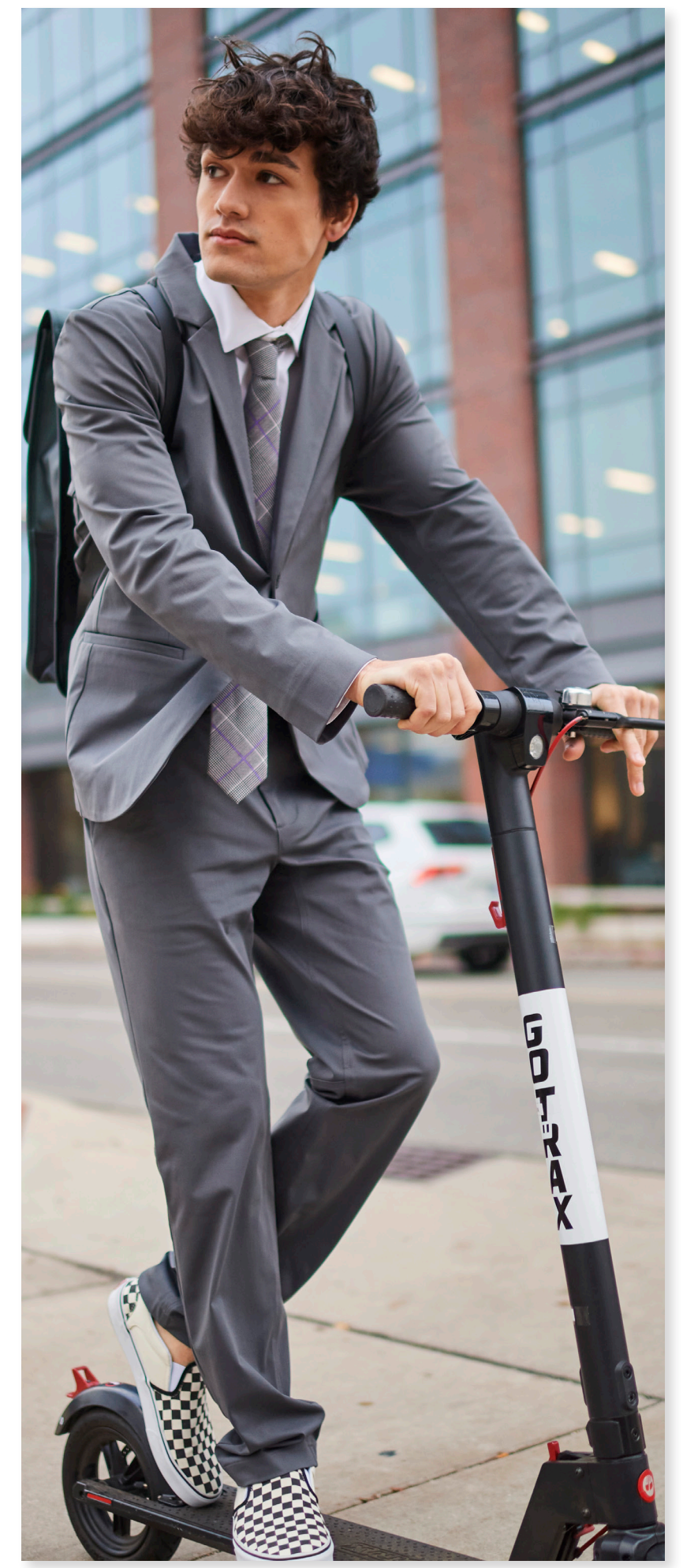
010 Black, 097 Forged Iron,  
431 Navy Agate



6572 Ladies' Point Grey Blazer **\$165.00**



3572 Men's Point Grey Blazer **\$165.00**





# Point Grey Pants

**NEW STYLE**



**FEATURES:**

- 57% Recycled Polyester/43% Sorona Polyester
- Four-way stretch
- 2572 has hidden right hip zip pocket
- Two front pockets and two back pockets (Ladies' has one back pocket)

**SIZES**

- 2572: Men's 28 - 54
- 8577: Ladies' 0 - 28
- 2582: Men's S - XL
- 8582: Ladies' XXS - XL

**FIT**

Tailored

**COLORS**

010 Black, 097 Forged Iron,  
431 Navy Agate



**8577 Ladies' Point Grey Pant \$85.90**



**8582 Ladies' Point Grey Tapered Ankle Pant \$79.90**



**2572 Men's Point Grey Pant \$85.90**



**2582 Men's Point Grey Tapered Ankle Pant \$79.90**





 **point grey**™  
by Edwards

**For the latest apparel styles visit [edwardsgarment.com](http://edwardsgarment.com)**

Edwards Garment 4900 South 9th St. Kalamazoo, MI 49009-9552 Ph. 800.253.9885