



UNIFORM & APPAREL LOOK BOOK

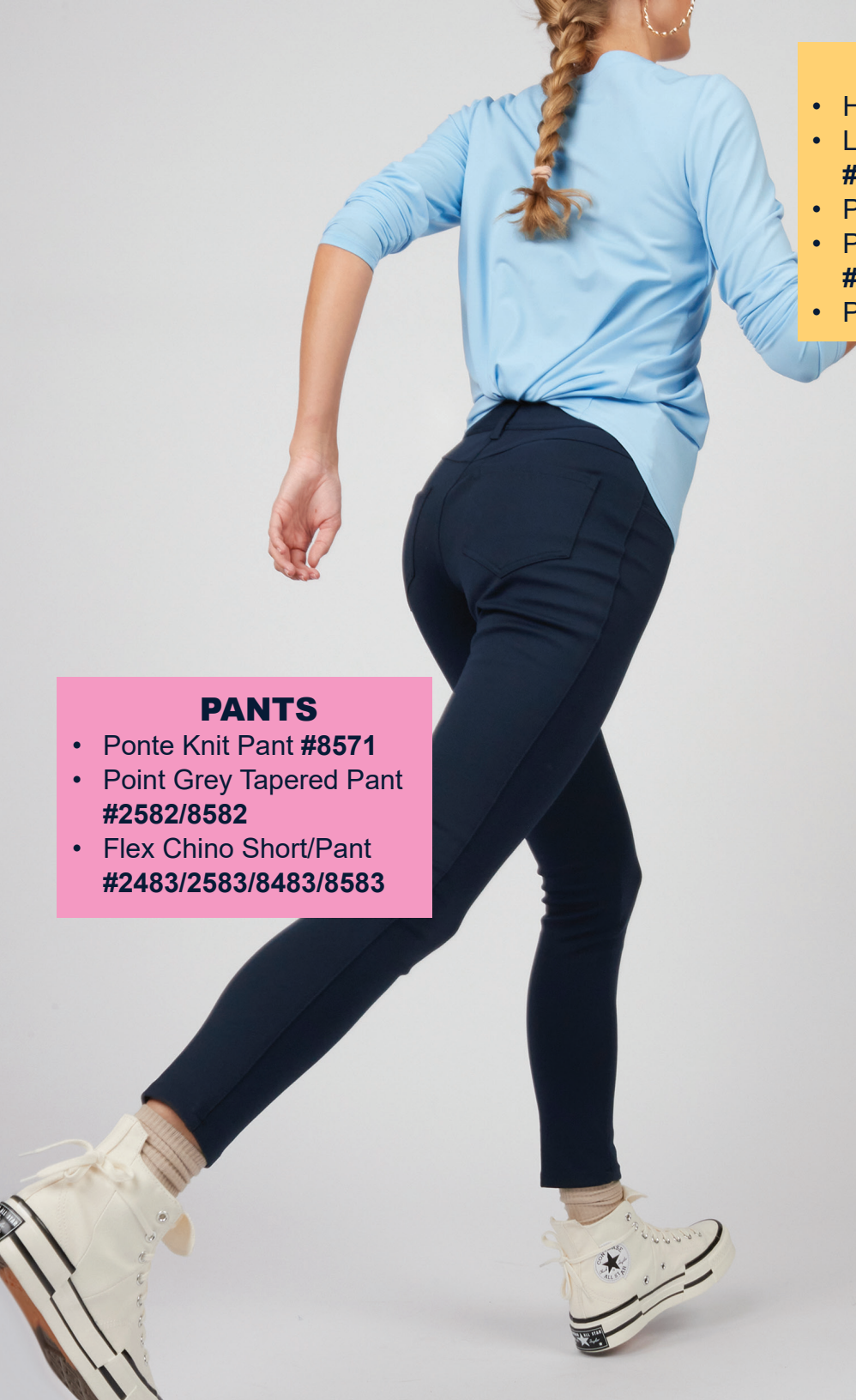
PROMO PERFECT

POLOS

- Ultimate Lightweight Polo
#1522/5524/1523
- Mini-Pique Polo
#1507/1527/5570
- Optical Heather Polo
#1590/5590
- Point Grey Polo
#1592/5592

SWEATERS

- Tuff-Pil Plus Acrylic Sweaters
#4372/4302/4350/7048/7059
- Tri-Blend Sweaters #4073/4072/7138
- Sweater Blazer #7071
- Ladies' Tri-Blend Sweaters #7046/7056/7058/7064
- Open Cardigan & Jacket #7053/4066



PANTS

- Ponte Knit Pant **#8571**
- Point Grey Tapered Pant **#2582/8582**
- Flex Chino Short/Pant **#2483/2583/8483/8583**

OUTERWEAR

- Herringbone Jacket **#3465/6465**
- Lightweight Soft Shell Jacket **#3428/6428**
- Point Grey 1/4-Zip **#3482/6482**
- Performance Tek Jacket **#3440/6440**
- Performance Pullover **#3442**



SHIRTS

- Soft Blouses **#5097/5426/5428**
- Stretch Blouses **#5229/5274**
- Sustainable Shirt **#1996/5296**
- Lightweight Poplin **#1245/1295/5040/5245/5295**
- Batiste Shirt **#1292/5292/5293**
- Melange Camp Shirt **#1039/5041**
- Two Color Hibiscus Shirt **#1036**
- Batiste Service Shirt **#1031**

HOTEL/RESORT

Parking/Valet, Front Desk, Management

GOOD BETTER BEST

Parking/Valet

- Mini-Pique Polos #1507/1527/5570; Utility Chino Short #2437/8435
- Ultimate Lightweight Polo #1522/5524; Flex Chino Pant & Short #2583/8583/2483/8483
- Bengal Camp Shirt #1038; Microfiber Pant & Short #2534/8532/2432/8432; Coach's Jacket #3430
- Optical Heather Polo #1590/5590; Performance Stretch Pant #2558/8558
- Point Grey Polo #1592/5592; Point Grey Tapered Pant #2582/8582; Point Grey 1/4-Zip #3482/6482
- Point Grey Shirt #1972/5272; Point Grey Tapered Pant #2582/8582; Lightweight Soft Shell Jacket #3428/6428

Front Desk

- Ultimate Lightweight Polo #1522/5524; Performance Stretch Pant #2558/8558; Herringbone Jacket #3465/6465
- Lightweight Poplin #1295/5040; Washable Wool Pant #2740/8740
- Comfort Stretch Poplin #1246/5246; Sweater Blazer #7071; Microfiber Pant #2534/8532
- Batiste Shirt #1292/5293; Microfiber Pant #2534/8532; Ponte Dress #9935
- Executive Pinpoint Oxford #1976/5980; Soft Blouses #5426/5428/5097; Russel Pant #2530/8530
- Point Grey Shirt #1972/5272; Point Grey Blazer #3572/6572; Point Grey Pant & Dress #2572/8577/9977

Management

- Optical Heather Polo #1590/5590; Washable Wool Pant #2740/8740
- Lightweight Poplin #1295/5040; Two-Pocket Blouse #5056; Microfiber Pant #2534/8532
- Batiste Shirt #1292/5293; Synergy Pant #2525/8526; Contemporary Blazer #3505/6505
- Sustainable Shirt #1996/5296; Jewel Neck Blouse #5224; Signature Pant & Skirt #2733/8733/9733
- Executive Pinpoint Oxford #1978/5980; Synergy Suit Coat #3525/6575; Synergy Pant & Skirt #2525/8525/9725
- Point Grey Shirt #1972/5272; Point Grey Blazer #3572/6572; Point Grey Pant #2572/8577



HOTEL/RESORT

Maintenance, Housekeeping, Pool/Spa

GOOD

BETTER

BEST

Maintenance

- Mini-Pique Polo #1507/5507; Utility Chino Pant & Short #2537/8537/2437/8435
- Pinpoint Oxford #1925; Rugged Comfort Pant #2551/8551
- Hi-Performance Polo #1576/5576; EZ Fit Utility Chino Pant #2540/8540; Rain Jacket #3435
- Essential Broadcloth #1314/5356; Utility Chino Cargo Pant & Short #2538/8538/2438/8438
- Easy Care Poplin #1230/5230; Flex Chino Pant & Short #2583/8583/2483/8483
- Chambray Shirt #1298/5298; Performance Stretch Pant #2558/8558; 3-Season Jacket #3410

Housekeeping

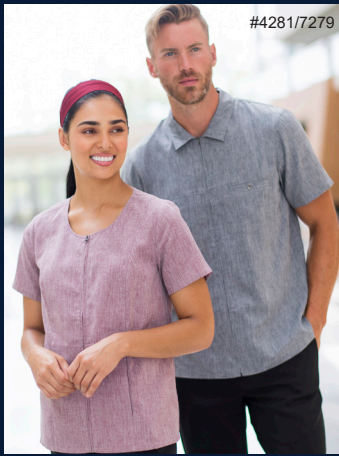
- Essential Housekeeping Shirt & Tunic #4891/7887/7889; Rugged Comfort Pant #2551/8551
- Essential Housekeeping Shirt & Tunic #4284/7284; Essential Pant #8898
- Melange Service Shirt & Tunic #4281/7279; Utility Chino Pant #2537/8537
- Sorrento Service Shirt & Spa Tunic #4283/7261; Sorrento Pant #8861; Flex Chino Pant #2583/8583
- Bengal Camp Shirt & Tunic #1038/7240; Sorrento Pant #8861; Performance Stretch Pant #2558/8558
- Premier Shirt & Tunic #4890/7890; Premier Pant #8891

Pool/Spa

- Ultimate Lightweight Polos #1522/5524; Utility Chino Cargo Short #2438/8438
- Batiste Service Shirt #1031; Utility Chino Pant & Short #2537/8537/2437/8435
- Bengal Camp Shirt & Tunic #1038/7240; Microfiber Short #2432/8432
- Sorrento Tech Shirt & Tunic #4283/7261/7283; Essential Pant #2793/8793; Sorrento Pant #8861
- Melange Collection #1039/5041/4281/7279; Flex Chino Pant & Short #2583/8583/2483/8483
- Point Grey Polo #1592/5592; Performance Stretch Pant #2558/8558; Ponte Pant #8571



#4284
#2538



#4281/7279



#7887



#2483



#3410



#1576



#8861

CASINO/GAMING

Valet, Security, Floor Supervisor

GOOD

BETTER

BEST

Valet

- Ultimate Lightweight Polos #1522/5524; Flex Chino Pant & Short #2583/8583/2483/8483
- Optical Heather Polo #1590/5590; Flex Chino Pant & Short #2583/8583/2483/8483; Ponte Pant #8571
- Batiste Shirt #1291/5291; Essential Vest #4490/7490; Microfiber Pant #2534/8532
- Executive Pinpoint Oxford #1976/5980; Traditional Blazer #3505/6505; Microfiber Pant #2534/8532
- Point Grey Polo #1592/5592; Performance Stretch Pant #2558/8558
- Point Grey Shirt #1972/5272; Point Grey Tapered Pant #2582/8582; Lightweight Soft Shell Jacket #3428/6428

Security

- Tactical Polo #1517/1567; Performance Stretch Pant #2558/8558
- Navigator Shirt #1212/5212; Utility Chino Cargo Pant #2538/8538
- Lightweight Poplin #1295/5295; Contemporary Blazer #3505/6505; Microfiber Pant #2534/8532
- Security Shirt #1225; Security Pant #2595/8591; Coach's Jacket #3430
- Sustainable Dress Shirt #1996/5296; Signature Suit Coat #3633/6633; Signature EZ Fit Pant #2531/8531
- Security Shirt #1275; Security EZ Fit Pant #2596/8596; Security Bomber Jacket #3462; Clip-on Tie #CL00

Floor Supervisor

- Lightweight Poplin #1295/5040; Dolman Blouse #5229; Washable Wool Pant #2740/8740
- Comfort Stretch Poplin #1246/5246; Performance Stretch Pant #2558/8558
- Executive Pinpoint Oxford #1976; Soft Wrap Blouse #5428; Microfiber Pant #2534/8532
- Sustainable Shirt #1996/5296; Russel Pant #2530/8530; Acrylic Full-Zip Sweater #4066
- Point Grey Shirt #1972/5272; Synergy Suit Coat #3525/6525/6575; Synergy Pant, Skirt & Dress #2535/8535/9725/9925
- Point Grey Shirt #1972/5272; Point Grey Blazer #3572/6572; Point Grey Pant #2572/8577



#1996
#3633
#2531

CASINO/GAMING

Valet, Security, Floor Supervisor

GOOD

BETTER

BEST

Bartenders/Servers

- Ultimate Polos #1512/5512/1562; Flex Chino Pant & Short #2583/8583/2483/8483; Ponte Pant #8571
- Essential Broadcloth #1354/5354; Performance Stretch Pant #2558/8558
- Hospitality Broadcloth #1290/5290; Firenza Vest #4550/7550; Microfiber Pant & Skirt #2534/8532/9732
- Stand-Up Collar Batiste Shirt #1398/5398; Essential Pant #2793/8793; Twill Waist Apron #9041
- Batiste Café Shirt #1291/5291; Ottoman Trim Vest #4398/7398; Essential Pant #2793/8793; Point Grey Wrap Dress #9977
- Batiste Dress Shirt #1292/5292; Synergy Pant #2525/8525; Denim Waist Apron #9098

Dealers

- Airgrid Polo #1579/5579; Polyester Pant #2290/8550
- Lightweight Poplin #1245/1295/5040/5245; Acrylic Sweater & Vest #4561/4565
- Hospitality Broadcloth #1290/5290; Swirl Brocade Vest #4391/7391; Ponte Pant #8571
- Batiste Stand-Up Collar Shirt #1398/5398; Essential Pant #2796/8794; Microfiber Skirt #9732
- Batiste Shirt #1292/5292/5293; Brocade Vest #4394/7394; Essential Pant #2796/8794; Dealer Apron #9021
- Batiste Café Shirt #1291/5291; Dress Lapel Vest #4496/7496; Essential Pant #2796/8794

Floor Staff/Slot Attendants

- Hospitality Broadcloth #1396/5396; Polyester Pant #2290/8550
- Ultimate Lightweight Polo #1522/5524; Performance Stretch Pant #2558/8558
- Batiste Stand-Up Collar Shirt #1398/5398; Brocade Vest #4394/7394; Microfiber Pant #2534/8532
- Batiste Shirt #1292/5293; Microfiber Pant #2534/8532
- Sustainable Shirt #1996/5296; Russel Suit Coat #3530/6535; Russel Pant #2530/8530; Ponte Dress #9935
- Batiste Café Shirt #1291/5291; Dress Lapel Vest #4496/7496; Essential Pant #2793/8793



AIRPORT/AIRLINES

Flight Attendant, Pilot, Security

GOOD

BETTER

BEST

Flight Attendant

- Ultimate Polos #1512/5512/5524; Performance Stretch Pant #2558/8558
- Essential Broadcloth #1354/5355; Essential Vest #4490/7490; Polyester Pant & Skirt #2290/9799
- Lightweight Poplins #1295/5295/5040; Ottoman Trim Vest #4398/7398; Essential Pant #2793/8793; Ponte Dress #9935;
- Stretch Broadcloth #1033/5045; Soft Wrap Blouse #5428; Microfiber Pant & Skirt #2534/9732
- Comfort Stretch Poplin #1246/5246; V-Neck Blouse #5274; Russel Vest #4530/7530; Russel Pant & Skirt #2530/8530/9730
- Batiste Shirt #1292/5292; Synergy Vest #4525/7526; Synergy Pant, Skirt & Dress #2535/9725/9925

Pilot

- Navigator Shirt #1212/5212; Microfiber Pant #2534/8532
- Navigator Shirt #1262/5262; Microfiber Pant #2534/8532; Clip-on Tie #CL00
- Stretch Broadcloth #1033/5045; Russel Pant #2530/8530
- Executive Pinpoint Oxford #1978/5980; Signature Suit Coat #3650/6633; Signature Pant #2733/8733; Solid Tie #SD00
- Sustainable Shirt #1996/5296; Synergy Suit Coat #3525/6575; Synergy Pant #2535/8535
- Point Grey Shirt #1972/5272; Point Grey Blazer #3572/6572; Point Grey Pant #2572/8577

Security

- Mini-Pique Polo #1527; Performance Stretch Pant #2558/8558
- Tactical Polo #1517/1567; Microfiber Pant #2534/8532
- Easy Care Poplin #1280/5280; Signature Suit Coat #3633/6633; Signature Pant #2733/8733; Tri-Blend ¼-Zip #4072
- Navigator Shirt #1212/5212; Security Pant #2595/8591
- Security Shirt #1225; Police Bomber Jacket #3464; Security EZ Fit Pant #2596/8596
- Security Shirt #1275; Security Bomber Jacket #3462; Security EZ Fit Pant #2596/8596



AIRPORT/AIRLINES

Grounds Crew, Air Traffic Control, Customer Service

GOOD

BETTER

BEST

Grounds Crew

- Essential Broadcloth #1314/5356; Flex Chino Short #2483/8483
- Melange Camp Shirt #1039/5041; Flex Chino Pant #2583/8583; Coach's Jacket #3430
- Easy Care Poplin #1230/5230; Utility Chino Cargo Pant #2538/8538
- Tactical Polo #1517/1567; Utility Chino Pant #2537/8537; Rain Jacket #3435
- Bengal Camp Shirt #1038; Performance Stretch Pant #2558/8558; Lightweight Soft Shell Jacket #3428/6428
- Navigator Shirts #1212/5212/1262/5262; Performance Stretch Pant #2558/8558

Air Traffic Control

- Essential Broadcloth #1314/5356; Utility Chino Cargo Short #2438/8438
- Ultimate Polos #1512/5512; Essential Pant #2793/8793
- Easy Care Poplin #1230/5230; Performance Stretch Pant #2558/8558; Performance Tek Vest #3447/6447; Ponte Pant #8571
- Lightweight Poplins #1295/5295/5040/1245/5245; Performance Stretch Pant #2558/8558
- Executive Pinpoint Oxford #1976/5980; Microfiber Pant & Short #2534/8532/2432/8432; Acrylic Full-Zip Sweater #4066
- Stretch Broadcloth #1033/5045; Soft Blouses #5426/5428/5097; Microfiber Pant #2534/8532

Customer Service Agent

- Mini-Pique Polo #1507/5570; Flex Chino Pant #2583/8583; Performance Tek Jacket #3440/6440
- Ultimate Polo #1512/5212; Performance Stretch Pant #2558/8558; Ponte Pant #8571
- Lightweight Poplin #1295/5295; Microfiber Pant & Skirt #2534/8532/9732; Sweater Blazer #7071
- Hospitality Broadcloth #1290/5290; Essential Pant #2793/8793; Ottoman Trim Vest #4398/7398
- Comfort Stretch Poplin #1246/5246; Russel Blazer #3530/6535; Russel Pant #2530/8530
- Batiste Shirt #1291/5291; Soft Wrap Blouse #5428; Synergy Pant & Skirt #2525/8525/9725



HEALTHCARE

Caregiver, Hospital, Janitorial

GOOD

BETTER

BEST

Medical Staff

- Mini-Pique Polos #1507/5507/5570; Flex Chino Short #2483/8483
- Essential Service Shirt & Tunic #4284/7284; Utility Chino Pant #2537/8537
- Melange Camp Shirt #1039/5041; Microfiber Pant #2534/8532
- Bengal Camp Shirt & Tunic #1038/7240; Performance Stretch Pant #2558/8558
- Sorrento Service Shirt & Pullover Tunic #4283/7283/7260; Sorrento Pant #8861
- Melange Service Shirt & Tunic #4281/7279; Essential Pant #2793/8793; Performance Tek Jacket & Vest #3440/6440/3447/6447

Front Desk/Reception

- Essential Broadcloth #1354/5354/5355; Washable Wool Pant #2740/8740
- Ultimate Lightweight Polo #1522/5524; Polyester Pant #2290/8550
- Bengal Camp Shirt #1038; Dolman Blouse #5229; Flex Chino Pant #2583/8583; Acrylic Cardigan #4066/7053
- Easy Care Oxford #1077/5077; Performance Stretch Pant #2558/8558; Ponte Pant #8571
- Lightweight Poplin #1295/5040; Synergy Pant & Skirt #2535/8535/9725; Sweater Blazer #7071
- Soft Blouses #5426/5428/5097; Microfiber Pant #2534/8532

Janitorial

- Mini-Pique Polo #1507/5507; Utility Chino Cargo Pant #2538/8538; Coach's Jacket #3430
- Essential Service Shirt & Smock #4891/7887/7889; Rugged Comfort Pant #2551/8551
- Essential Broadcloth #1314/5356; Essential Pant #2793/8793
- Essential Service Shirt & Scoop Neck Tunic #4284/7284; Flex Chino Pant #2583/8583
- Sorrento Tech Shirt & Tunic #4283/7260; Performance Stretch Pant #2558/8558; Sorrento Pant #8861
- Melange Camp Shirt #1039/5041; Performance Stretch Pant #2558/8558; Lightweight Soft Shell Jacket #3428/6428



ASSISTED LIVING

Office Staff, Nurse, Activities Coordinator

GOOD

BETTER

BEST

Office Staff

- Easy Care Oxford #1077/5077; Washable Wool Pant #2740/8740
- Soft Touch Polo #1500/1505/5500; Polyester Pant #2290/8550
- Ultimate Lightweight Polo #1522/5524; Flex Chino Pant #2583/8583
- Point Grey Polo #1592/5592; Open V-Neck Blouse #5275; Performance Stretch Pant #2558/8558
- Lightweight Poplin #1295/5040/5295; Ponte Pant #8571; Sweater Blazer #7071
- Soft Blouses #5426/5428/5097; Microfiber Pant #2534/8532

Nurse

- Mini-Pique Polos #1507/5507/5570; Flex Chino Pant #2583/8583
- Hi-Performance Polo #1576/5576; Utility Chino Pant #2537/8537
- Sorrento Service Shirt & Pullover Tunic #4283/7260; Sorrento Pant #8861
- Bengal Camp Shirt & Tunic #1038/7240; Performance Stretch Pant #2558/8558
- Melange Camp Shirt #1039/5041; Ponte Pant #8571
- Melange Service Shirt & Tunic #4281/7279; Essential Pant #2793/8793; Performance Tek Jacket & Vest #3440/6440/3447/6447

Activities Coordinator

- Mini-Pique Polos #1507/5570/1527; Utility Chino Short #2437/8435
- Ultimate Lightweight Polos #1522/5524; Flex Chino Short #2483/8483
- Easy Care Oxford #1027/5027; Flex Chino Pant #2583/8583; Performance Pullover #3442
- Optical Heather Polo #1590/5590; Performance Stretch Pant #2558/8558
- Soft Shell Blouse #5426; Melange Camp Shirt #1039/5041; Microfiber Pant #2534/8532
- Point Grey Polo #1592/5592; Point Grey Tapered Pant #2582/8582; Point Grey 1/4-Zip #3482/6482



CAR DEALERSHIP

Salesman, Customer Service/Reception

GOOD BETTER BEST

Salesman

- Ultimate Lightweight Polos #1522/5524; Flex Chino Short #2483/8483
- Optical Heather Polo #1590/5590; Flex Chino Pant #2583/8583; Ponte Pant #8571
- Comfort Stretch Poplin #1246/5246; Soft Wrap Blouse #5428; Microfiber Pant #2534/8532
- Executive Pinpoint Oxford #1976/5980; Performance Stretch Pant #2558/8558; Performance Pullover #3442
- Point Grey Polo #1592/5592; Point Grey Tapered Pant #2582/8482; Point Grey 1/4-Zip #3482/6482
- Point Grey Shirt #1972/5272; Point Grey Blazer #3572/6572; Point Grey Pant #2572/8577

Customer Service/Reception

- Soft Touch Polo #1500/5500; Flex Chino Pant #2583/8583; Microfleece Jackets #3450/6450/3456
- Ultimate Lightweight Polos #1522/5524; Flex Chino Pant #2583/8583; Ponte Pant #8571
- Lightweight Poplin #1245/5245; Washable Wool Pant #2740/8740
- Stretch Broadcloth #1033/5045; Performance Stretch Pant #2558/8558; Herringbone Jacket #3465/6465
- Executive Pinpoint Oxford #1976/5980; Microfiber Pant #2534/8532; Sweater Blazer #7071
- Sustainable Shirt #1996/5296; Soft Blouses #5426/5428/5097; Russel Pant & Skirt #2530/8530/9730

Car Service Staff

- Hi-Performance Polo #1576/5576; Utility Chino Pant & Short #2537/8537/2437/8435
- Ultimate Polo #1512/5512; Rugged Comfort Pant #2551/8551
- Sorrento Tech Shirt #4283; Utility Chino Cargo Pant & Short #2538/8538/2438/8438
- Essential Broadcloth #1314/5356; Flex Chino Pant & Short #2583/8583/2483/8483; Performance Pullover #3442
- Bengal Camp Shirt #1038; Performance Stretch Pant #2558/8558; Lightweight Soft Shell Jacket #3428/6428
- Chambray Shirt #1298/5298; Performance Stretch Pant #2558/8558



SERVICE CREW

HVAC, Landscaping, Construction

GOOD

BETTER

BEST

HVAC

- Essential Broadcloth #1314/5356/1354/5354; Flex Chino Pant #2583/8583
- Navigator Shirt #1262/5262; Rugged Comfort Pant #2551/8551; Coach's Jacket #3430
- Pinpoint Oxford #1925/1975/5975; Utility Chino Pant #2537/8537
- Hi-Performance Polo #1576/5576; Utility Chino Short #8435/2437
- Bengal Camp Shirt #1038; Utility Chino Cargo Pant & Short #2538/8538/2438/8438; Lightweight Soft Shell Jacket #3428/6428
- Chambray Shirt #1298/5298; Performance Stretch Pant #2558/8558

Landscaping

- Ultimate Polo #1512/5512; EZ Fit Utility Chino Pant #2540/8540
- Mini-Pique Polo #1507/5570/1527; Flex Chino Pant & Short #2583/8583/2483/8483
- Essential Broadcloth #1314/5356; Utility Chino Pant & Short #2537/8537/2437/8435; Performance Tek Vest #3447/6447
- Hi-Performance Polos #1576/5576/1578; Utility Chino Cargo Pant & Short #2538/8538/2438/8438
- Melange Camp Shirt #1039/5041; Performance Stretch Pant #2558/8558; Rain Jacket #3435
- Bengal Camp Shirt #1038; Performance Stretch Pant #2558/8558; Twill Bib and Waist Apron #9043/9041/9096

Construction

- Essential Broadcloth #1314/5356/1354/5354; Rugged Comfort Pant #2551/8551
- Mini-Pique Polo #1507/5507; Flex Chino Pant & Short #2583/8583/2483/8483
- Pinpoint Oxford #1925/1975/5975; EZ Fit Utility Chino Pant #2540/8540; Rain Jacket #3435
- Hi-Performance Polos #1576/5576/1578; Utility Chino Pant & Short #2537/8537/2437/8435
- Bengal Camp Shirt #1038; Utility Chino Cargo Pant & Short #2538/8538/2438/8438
- Chambray Shirt #1298/5298; Performance Stretch Pant #2558/8558; 3-Season Jacket #3410



#5298
#8538



#5576



#1038



#2437/8435



#3410



#1314



#2583

FINANCIAL

Accountant, Bank Teller, Analyst

GOOD

BETTER

BEST

Accountant

- Lightweight Poplins #1295/5295/5040; Washable Wool Pant #2740/8740
- Easy Care Poplin #1230/5230; Essential Pant #2793/8793
- Stretch Broadcloth #1033/5034; Russel Pant & Skirt #2530/8530/9730; Sweater Blazer #7071
- Executive Pinpoint Oxford #1976/5980; Dolman Blouse #5229; Microfiber Pant #2534/8532
- Sustainable Shirt #1996/5296; Soft Wrap Blouse #5428; Synergy Suit Coat #3525/6525; Synergy Pant & Skirt #2535/8535/9725
- Point Grey Shirt #1972/5272; Point Grey Blazer #3572/6572; Point Grey Pant #2572/8577

Bank Teller

- Easy Care Poplins #1230/5230/1280/5280; Polyester Pant #2290/8550
- Ultimate Polo #1512/5512; Essential Pant #2793/8793
- Lightweight Poplin #1295/5040; Performance Stretch Pant #2558/8558; Ponte Pant #8571; Herringbone Jacket #3465/6465
- Optical Heather Polo #1590/5590; Flex Chino Pant #2583/8583
- Comfort Stretch Poplin #1246/5246; Russel Suit Coat #3530/6535; Russel Pant #2530/8530
- Executive Pinpoint Oxford #1976/5980; Soft Blouses #5426/5428/5097; Microfiber Pant #2534/8532; Ponte Dress #9935

Analyst

- Optical Heather Polo #1590/5590; Washable Wool Pant #2740/8740
- Easy Care Oxford #1077/5077; Performance Stretch Pant #2558/8558; Performance Tek Jacket #3440/6440
- Lightweight Poplin #1295/5040; Microfiber Pant #2534/8532
- Comfort Stretch Poplin #1246/5246; Microfiber Pant #2534/8532; Acrylic Open Cardigan #7053
- Executive Pinpoint Oxford #1976/5980; Russel Pant #2530/8530; Sweater Blazer #7071
- Sustainable Shirt #1996/5296; Soft Shell Blouse #5426; Synergy Suit Coat #3525/6525; Synergy Pant #2525/8526

#5426
#7071
#8571



edwardsgarment.com

#1512



#2534/8532

#3465/6465
#2558/8558



#3440



#1972



#5296
#6535
#8532

SECURITY

Security Officer, Screener, Security Specialist

GOOD

BETTER

BEST

Security Officer

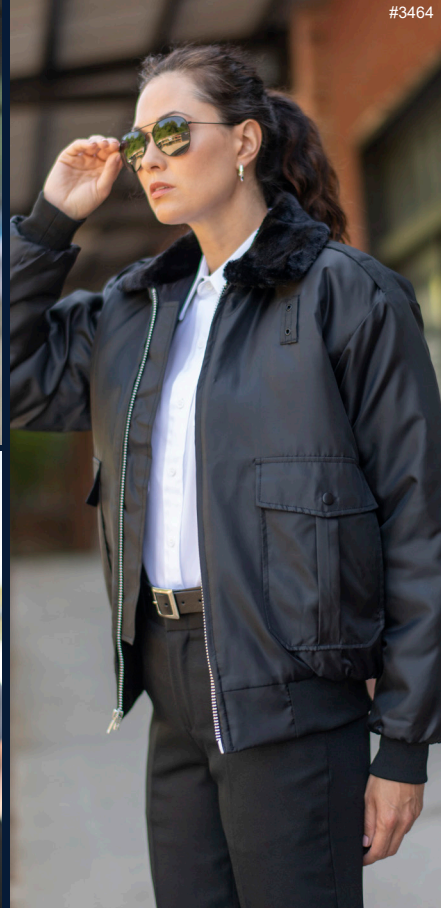
- Tactical Polo #1517; Flex Chino Pant #2583/8583
- Tactical Polo #1567; Performance Stretch Pant #2558/8558
- Security Shirt #1226; Microfiber Pant #2534/8532; 3-Season Jacket #3410
- Security Shirt #1276; Security Pant #2595/8591
- Security Shirt #1225; Security EZ Fit Pant #2596/8596; Police Bomber Jacket #3464
- Security Shirt #1275; Security EZ Fit Pant #2596/8596; Security Bomber Jacket #3462

Screener

- Essential Broadcloth #1354/5354; Flex Chino Pant #2583/8583; Tri-Blend 1/4-Zip #4072
- Tactical Polo #1517/1567; Performance Stretch Pant #2558/8558
- Navigator Shirt #1212/5212; Microfiber Pant #2534/8532;
- Navigator Shirt #1262/5262; Security Pant #2595/8591; Coach's Jacket #3430
- Security Shirt #1225; Security EZ Fit Pant #2596/8596; Police Bomber Jacket #3464
- Security Shirt #1275; Security EZ Fit Pant #2596/8596

Security Specialist

- Tactical Polo #1517/1567; Security Pant #2595/8591
- Ultimate Polo #1512/5512; Flex Chino Pant #2583/8583
- Easy Care Poplin #1280/5280; Microfiber Pant #2534/8532; Lightweight Soft Shell Jacket #3428/6428
- Comfort Stretch Poplins #1231/5231/1246/5246; Performance Stretch Pant #2558/8558
- Executive Pinpoint Oxford #1976/5980; Russel Pant #2530/8530; Tri-Blend 1/4-Zip #4072
- Sustainable Shirt #1996/5296; Signature Suit Coat #3633/6633; Signature EZ Fit Pant #2531/8531



RESTAURANT

Server/Host, Kitchen Staff, Busser

GOOD

BETTER

BEST

Server/Host

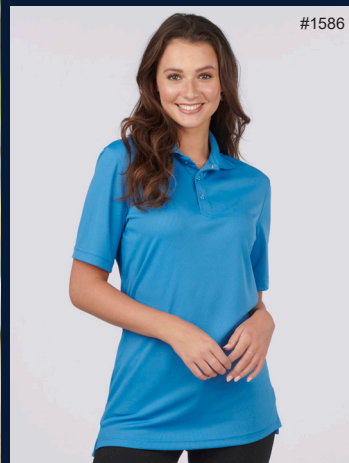
- Ultimate Polo #1512/5512; Performance Stretch Pant #2558/8558; Ponte Pant #8571
- Hospitality Broadcloth #1290/5290; Flex Chino Pant #2583/8583
- Batiste Banded Collar Shirt #1392/5392; Essential Pant #2793/8793; Twill Waist Apron #9041
- Sustainable Shirt #1996/5296; Soft Pleated Blouse #5097; Essential Pant #2793/8793
- Batiste Café Shirt #1291/5291; Microfiber Pant & Skirt #2434/8532/9732; Denim Bib & Waist Apron #9097/9098/9091
- Point Grey Shirt #1972/5272; Point Grey Blazer #3572/6572; Point Grey Pant #2572/8577; Ponte Dress #9935

Kitchen Staff

- Food Service Polo #1586; Traditional Chef Pant #2001; Ball Cap #HT03
- Cook Shirt #1303; Basic Chef Pant #2000; 3-Pocket Bib Apron #9002
- Cook Shirt with Mesh Back #1305; Ultimate Chef Pant #2002
- Chef Coat with Mesh Back #3363; Ultimate Chef Pant #2002; Skull Cap #HT01
- Classic Chef Coat #3301; Cargo Chef Pant #2003; Twill Bib & Waist Apron #9043/9041
- Classic Chef Coat #3302; Cargo Chef Pant #2003; Beanie with Self-fastening Back #HT04

Busser

- Ultimate Lightweight Polo #1522/5524; Rugged Comfort Pant #2551/8551
- Food Service Polo #1586; Polyester Pant #2290/8550; 3-Pocket Bib Apron #9002
- Hospitality Broadcloths #1290/5290/1396/5396; Essential Pant #2793/8793
- Melange Camp Shirt #1039/5041; Flex Chino Pant & Short #2583/8583/2483/8483
- Comfort Stretch Poplin #1246/5246; Performance Stretch Pant #2558/8558; Ponte Pant #8571
- Batiste Stand-up Collar Shirt #1398/5398; Point Grey Tapered Pant #2582/8582; Twill Bib & Waist Apron #9043/9041



TRANSIT

Bus Driver/Public Transport, Route Supervisor

GOOD

BETTER

BEST

Bus Driver/Public Transport

- Mini-Pique Polos #1507/5507/5570; Utility Chino Short #2437/8435
- Tactical Polo #1517/1567; Utility Chino Pant #2537/8537; Jersey Knit Vest #4561
- Pinpoint Oxfords #1925/1975/5975; Flex Chino Pant #2583/8583; Ponte Pant #8571
- Easy Care Poplin #1230/5230; Essential Pant #2793/8793; Tri-blend ¼-Zip #4072
- Navigator Shirt #1212/5212; Performance Stretch Pant #2558/8558
- Navigator Shirt #1262/5262; Microfiber Pant #2534/8532; Coach's Jacket #3430

Route Supervisor

- Ultimate Lightweight Polos #1522/5524; Utility Chino Pant #2537/8537
- Bengal Camp Shirt #1038; Rugged Comfort Pant #2551/8551
- Pinpoint Oxford #1975/5975; Performance Stretch Pant #2558/8558; Ponte Pant #8571; Performance Tek Vest #3447/6447
- Optical Heather Polo #1590/5590; Flex Chino Pant & Short #2583/8583/2483/8483
- Lightweight Poplin #1295/5040; Soft Shell Blouse #5426; Microfiber Pant & Short #2534/8532/2432/8432
- Executive Pinpoint Oxford #1976/5980; Microfiber Pant #2534/8532; Lightweight Soft Shell Jacket #3428/6428

Transportation Director

- Essential Broadcloth #1354/5355; Washable Wool Pant #2740/8740
- Optical Heather Polo #1590/5590; Flex Chino Pant #2583/8583
- Lightweight Poplin #1295/5040; Performance Stretch Pant #2558/8558; Performance Pullover #3442
- Easy Care Oxford #1077/5077; Microfiber Pant #2534/8532
- Comfort Stretch Poplin #1231/5231; Soft Pleated Blouse #5097; Russel Pant #2530/8530
- Executive Pinpoint Oxford #1976/5980; Synergy Suit Coat #3525/6575; Synergy Pant #2535/8535



#8583

GROCERY STORES

Cashier/Bagger, Stocker, Management

GOOD

BETTER

BEST

Cashier/Bagger

- Mini-Pique Polos #1507/5507/5570; Utility Chino Short #2437/8435
- Hi-Performance Polo #1576/5576; Rugged Comfort Pant #2551/8551; Microfleece Jacket #3450/6450
- Essential Broadcloth #1354/5355; Utility Chino Pant #2537/8537
- Lightweight Poplin #1295/5295/5040; Essential Pant #2793/8793; Performance Pullover #3442
- Melange Camp Shirt #1039/5041; Flex Chino Pant #2583/8583
- Easy Care Poplin #1280/5280; Performance Stretch Pant #2558/8558; Tri-blend ¼-Zip #4072

Stocker

- Mini-Pique Polos #1507/5507/5570; Utility Chino Short #2437/8435
- Food Service Polo #1586; Rugged Comfort Pant #2551/8551; Cobbler Apron #9006
- Essential Broadcloth #1314/5356; Utility Chino Pant #2537/8537; Twill Bib Apron #9043
- Easy Care Poplin #1230/5230; Utility Chino Cargo Pant #2538/8538
- Bengal Camp Shirt #1038; Flex Chino Pant #2583/8583
- Stretch Broadcloth #1033/5045; Performance Stretch Pant #2558/8558; Denim Bib & Waist Apron #9097/9098

Management

- Easy Care Oxford #1077/5077; Flex Chino Pant #2583/8583
- Lightweight Poplins #1295/5295/5040; Performance Stretch Pant #2558/8558; Essential Sweater & Vest #4067/4065
- Stretch Broadcloth #1033/5034; Microfiber Pant #2534/8532; Herringbone Jacket #3465/6465
- Executive Pinpoint Oxford #1976/5980; Soft Pleated Blouse #5097; Synergy Pant #2535/8535
- Point Grey Polo #1592/5592; Point Grey Blazer #3572/6572; Point Grey Tapered Pant #2582/8582
- Point Grey Shirt #1972/5572; Point Grey Pant #2572/8577



GOLF COURSE

Pro-Shop Associate, Maintenance, Manager

GOOD

BETTER

BEST

Pro-Shop Associate

- Mini-Pique Polos #1507/5507/5570; Utility Chino Short #2437/8435
- Ultimate Lightweight Polo #1522/5524; Microfiber Pant & Short #2534/8532/2432/8432
- Optical Heather Polo #1590/5590; Flex Chino Short #2483/8483
- Melange Camp Shirt #1039/5041; Flex Chino Pant #2583/8583; Performance Pullover #3442
- Bengal Camp Shirt #1038; Performance Stretch Pant #2558/8558
- Point Grey Polo #1592/5592; Point Grey Tapered Pant #2582/8582; Point Grey 1/4-Zip #3482/6482

Course Maintenance

- Mini-Pique Polos #1507/5507/5570/1527; Rugged Comfort Pant #2551/8551; Rain Jacket #3435
- Essential Broadcloth #1314/5356; Flex Chino Pant & Short #2583/8583/2483/8483; Performance Tek Vest #3447/6447
- Easy Care Oxford #1027/5027/1077/5077; Utility Chino Cargo Short #2438/8438
- Hi-Performance Polos #1576/5576/1578; Utility Chino Cargo Pant #2538/8538
- Bengal Camp Shirt #1038; Utility Chino Pant & Short #2537/8537/2437/8435
- Easy Care Poplin #1230/5230; Performance Stretch Pant #2558/8558; Lightweight Soft Shell Jacket #3428/6428

Club Manager

- Essential Broadcloth #1314/5356; Essential Pant #2793/8793
- Lightweight Poplin #1295/5040; Washable Wool Pant #2740/8740
- Optical Heather Polo #1590/5590; Performance Stretch Pant #2558/8558
- Executive Pinpoint Oxford #1976/5980; Microfiber Pant #2534/8532; Acrylic Full-Zip Sweater #4066
- Sustainable Shirt #1996/5296; Soft Wrap Blouse #5428; Synergy Pant #2535/8535;
- Point Grey Shirt #1972/5572; Point Grey Pant #2572/8572; Point Grey Blazer #3572/6572



AMUSEMENT PARK

Game/Ride Attendant, Admissions/Park Supervisor

GOOD

BETTER

BEST

Game/Ride Attendant

- Mini-Pique Polo #1507/5570; Utility Chino Pant #2537/8537
- Hibiscus Camp Shirt #1036; Utility Chino Short #2437/8435
- Hi-Performance Polos #1576/5576/1578; Flex Chino Short #2483/8583; Ponte Pant #8571; Twill Waist Apron #9041
- Ultimate Lightweight Polo #1522/5524; Flex Chino Pant #2583/8583; Performance Tek Jacket #3440/6440
- Point Grey Polo #1592/5592; Point Grey Tapered Pant #2582/8482
- Melange Chambray Shirt #1039/5041; Performance Stretch Pant #2558/8558; Light-weight Soft Shell Jacket #3428/6428

Admissions/Park Supervisor

- Ultimate Lightweight Polo #1522/5524; Flex Chino Pant & Short #2583/8583/2483/8483
- Soft Touch Polos #1500/1505/5500; Essential Pant #2793/8793
- Lightweight Poplin #1295/5040; Performance Stretch Pant #2558/8558
- Optical Heather Polo #1590/5590; Performance Stretch Pant #2558/8558
- Comfort Stretch Poplins #1246/5246/1231/5231; Microfiber Short #2432/8432; Herringbone Jacket #3465/6465
- Point Grey Shirt #1972/5272; Point Grey Pant #2572/8572

Ride Tech

- Ultimate Polos #1512/5512; EZ Fit Utility Chino Pant #2540/8540
- Mini-Pique Polos #1507/5507/5570/1527; Rugged Comfort Pant #2551/8551
- Essential Broadcloth #1314/5356; Utility Chino Pant & Short #2537/8537/2437/8435; Performance Pullover #3442
- Easy Care Poplin #1230/5230; Utility Chino Cargo Pant & Short #2538/8538/2438/8438
- Chambray Shirt #1298/5298; Performance Stretch Pant #2558/8558
- Bengal Camp Shirt #1038; Performance Stretch Pant #2558/8558; 3-Season Jacket #3410



STADIUM/ARENA

Stadium Staff, Concession, Janitor/Cleaning Crew

GOOD

BETTER

BEST

Stadium Staff

- Essential Broadcloths #1354/5354/5355; Rugged Comfort Pant #2551/8551; Coach's Jacket #3430
- Mini-Pique Polos #1507/5507/5570; Utility Chino Short #2437/8435
- Hi-Performance Polo #1576/5576; Flex Chino Short #2483/8483; Performance Pullover #3442
- Soft Touch Polos #1500/1505/5500; Flex Chino Pant #2583/8583; Ponte Pant #8571
- Stretch Broadcloth #1033/5045; Performance Stretch Pant #2558/8558
- Lightweight Poplin #1295/5040; Microfiber Pant #2534/8532; Lightweight Soft Shell Jacket #3428/6428

Concession

- Food Service Polo #1586; Traditional Chef Pant #2001
- Mini-Pique Polos #1507/5507/5570; Rugged Comfort Pant #2551/8551
- Essential Broadcloth #1314/5356; Essential Pant #2793/8793; Microfleece Jacket #3450/6450
- Ultimate Lightweight Polo #1522/5524; Flex Chino Pant #2583/8583; Ponte Pant #8571
- Batiste Café Shirts #1291/5291; Performance Stretch Pant #2558/8558
- Melange Chambray Shirt #1039/5041; Soft Shell Blouse #5426; Performance Stretch Pant #2558/8558

Janitor/Cleaning Crew

- Essential Broadcloth #1314/5356; Essential Pant #2793/8793
- Mini-Pique Polos #1507/5570/1527; EZ Fit Utility Chino Pant #2540/8540;
- Ultimate Lightweight Polo #1522/5524; Flex Chino Pant & Short #2583/8583/2483/8483
- Essential Service Shirt & Tunic #4284/7284; Utility Chino Pant & Short #2537/8537/2437/8435
- Hi-Performance Polo #1576/5576; Performance Stretch Pant #2558/8558
- Melange Camp Shirt #1039/5041; Performance Stretch Pant #2558/8558





STOP SEARCHING

You've found your perfect supplier partner for outfitting industry programs. Our in-stock ready-to-ship styles check all the boxes.

- ✓ Deep on-hand inventory
- ✓ In-House decoration
- ✓ Extended size & color runs
- ✓ No Minimums
- ✓ Retail Inspired styling
- ✓ Bag by Person packaging

CREATE A SIGNATURE LOOK

Consider combining Edwards stock styles with an EdwardsX custom piece for the ultimate uniform duo. Together, you can elevate your look through the power of apparel!



**EXCLUSIVE
CUSTOM DESIGN**

Edwards® X

EXCLUSIVE CUSTOM DESIGN

Make your uniform exceptional with every garment made-to-order. Custom fabrics. Custom colors. Custom decorations. Complete control over the entire process, start to finish.

SUSTAINABILITY

Every project is filtered through the latest innovations in sustainability and our entire effort is anchored in a bedrock of social responsibility. We strive to gain partnerships, certifications, and new ways to create a little to no environmental footprint.

GET INSPIRED!

Allow us to create a fully custom deck for you and your clients at no charge. We believe our photo-real mock-ups will knock your socks off. You tell us the idea, we'll create a story.

Edwards[®]
EST. 1867



UNIFORMLOOKBOOK 0 0

for the latest styles visit edwardsgarment.com