

NEW ARRIVALS

2024

The logo for Point Grey, featuring a white icon of a speech bubble with a checkmark inside, followed by the text "point grey" in a lowercase, sans-serif font, with a trademark symbol (TM) to the right. The logo is set against a solid orange square background.

point grey™

A young man with dark, curly hair is riding a black and red electric scooter on a paved sidewalk. He is wearing a dark grey suit jacket, a white shirt, a grey tie, and dark grey trousers. He is also wearing white sneakers with a black and white checkerboard pattern. He is leaning forward, holding the handlebars, and looking to his right. The background shows a brick building and some trees with autumn-colored leaves.

STRETCH.
RELAX.
PERFORM.
STYLE.

Modern arrivals.

The new Point Grey™ line is a fresh take on business casual apparel where fashion meets function. These crazy, comfortable designs make you feel like you're wearing your favorite joggers but look like you're meeting-ready. Combining upscale designs and a more tailored fit with incredible ergonomics and an extended range of motion allows you to go seamlessly from work life to real life without a wardrobe change. Feel good and look even better with Point Grey™.



SUSTAINABLE



EASY CARE



HOME LAUNDRY





3572
Men's Point Grey
Blazer

6572
Ladies' Point Grey
Blazer

\$165.00



3572 Men's Point Grey Blazer **\$165.00**

POINT GREY BLAZERS

NEW STYLES



FEATURES:

- 57% Recycled Polyester/43% Sorona Polyester
- Four-way stretch fabric increases comfort and flexibility
- Antimicrobial, quick drying fabric
- Men's has single interior pocket

SIZES:

Men's Sizes: S-4XL, Scale H
Ladies' Sizes: XS-3XL, Scale O

FIT:

Tailored

COLORS:

010 Black, 097 Forged Iron,
431 Navy Agate

010

097

431



6572 Ladies' Point Grey Blazer **\$165.00**



POINT GREY PANTS

NEW STYLES



FEATURES:

- 57% Recycled Polyester/43% Sorona Polyester
- Four-way stretch fabric increases comfort and flexibility
- Men's has hidden, secure zip, right hip pocket
- Two front pockets and two back pockets (Ladies' has one back pocket)

SIZES:

Men's Sizes: 28-54 (inseams 30", 32", 34"), Scale H

Ladies' Sizes: 0-28 (inseams 28", 30", 32"), Scale O

FIT:

Tailored

COLORS:

010 Black, 097 Forged Iron, 431 Navy Agate

010

097

431

8577 Ladies' Point Grey Pant \$89.90



2572 Men's Point Grey Pant \$89.90



5272 Ladies' Point Grey Shirt **\$59.90**



POINT GREY SHIRTS

NEW STYLES



FEATURES:

- 52% Polyester/36% recycled Green Circle Polyester/12% Spandex
- Four-way stretch fabric increases comfort and flexibility
- Non-iron
- Moisture wicking and quick drying

SIZES:

Men's Sizes: S-3XL, MT-4XLT, Scale H

Ladies' Sizes: XXS-3XL, Scale O

FIT:

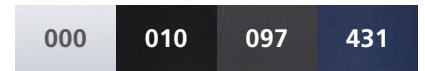
Tailored


COLORS:

000 White, 010 Black, 097 Forged Iron, 431 Navy Agate



1972 Men's Point Grey Shirt **\$59.90**





NEW STYLE

5426
Shell Blouse

\$37.90



5428 Wrap Blouse **\$38.90**



5097 Pleated Blouse **\$39.90**

LADIES' SOFT BLOUSES

NEW STYLES



FEATURES:

- 95% Polyester/5% Spandex
- Soft jersey knit fabric
- Pleated blouse features a 2" front pleat and is great for those looking for a maternity blouse

SIZES:

Ladies' XS-3XL, Scale O

FIT:

Tailored

COLORS:

000 White, 001 Blue, 010 Black, 096 Silver, 253 Lilac

	000	001	010	096	253
5097	▪		▪		
5428	▪		▪		
5426	▪	▪	▪	▪	▪

NEW STYLE

5570

Ladies' Split
Neckline Polo

\$15.90





5507 Ladies' Polo \$15.90

MINI-PIQUE POLOS



FEATURES:

- 100% Polyester
- Snag-proof
- Budget friendly polo for any program or event
- Hemmed bottom and sleeves

SIZES:

Men's S-3XL, 4XLT-6XLT, Scale H
 5507: Ladies' XXS-4XL, Scale O
 5570: Ladies' XS-3XL, Scale O
 Unisex XXS-3XL, 4XLT-6XLT, Scale V

FIT:

1507/5507/1527: Traditional
 5570: Tailored

COLORS:

000 White, 010 Black, 012 Red,
 041 Royal, 061 French Blue, 079 Steel Grey,
 091 Marina Blue, 249 High Visibility Lime,
 393 High Visibility Orange, 432 Bright Navy,
 909 Cool Grey



1507 Men's Polo \$15.90



1527 Unisex Long-Sleeve Polo \$19.90

	000	010	012	041	061	079	091	249	393	432	909
1507	■	■	■	■	■	■	■	■	■	■	■
1527	■	■	■	■	■	■	■	■	■	■	■
5507	■	■	■	■	■	■	■	■	■	■	■
5570	■	■	■	■	■	■	■	■	■	■	■



NEW STYLE

5524
Ladies' Lightweight
Polo with Split
Neckline

\$23.50



1522 Men's / 5522 Ladies' Lightweight Polo \$23.50



1512 Men's / 5512 Ladies' Polo \$25.90



1562 Unisex Long-Sleeve Polo \$29.90



1523 Unisex Polo with Pocket \$26.90

ULTIMATE POLOS



FEATURES:

- 100% Polyester
- Snag-proof
- Good UV Protection
- Keeps its color for at least 50 home wash/dry cycles

SIZES:

Men's S-3XL, LT-6XLT, Scale H
 5512/5522: Ladies' XXS-4XL, Scale O
 5524: Ladies' XS-3XL, Scale O
 Unisex XXS-6XL, Scale V

FIT:

1512/5512/1522/5522/1523/1562: Traditional
 5524: Tailored

COLORS:

000 White, 007 Navy, 010 Black, 012 Red, 013 Burgundy, 041 Royal, 079 Steel Grey, 212 Silver Tan, 310 Fern Green, 909 Cool Grey

	000	007	010	012	013	041	079	212	310	909
1512	■	■	■	■	■	■	■	■	■	
5512	■	■	■	■	■	■	■	■	■	
1522	■	■	■	■	■	■	■	■		■
1523	■	■	■				■			
5522	■	■	■	■		■	■		■	■
5524	■	■	■	■		■	■		■	■
1562		■	■			■	■			



8558
Ladies' Pant
\$45.90





PERFORMANCE STRETCH PANTS

NEW STYLE



FEATURES:

- 98% Cotton/2% Spandex
- Made with U.S. Cotton
- 4-way stretch fabric increases comfort and flexibility
- Comfort stretch interior waistband
- Two front and two back pockets (Ladies' has one)

SIZES:

Men's 28-54, Scale H
Ladies' 0-32, Scale O

FIT:

Tailored

COLORS:

005 Tan, 010 Black, 017 Dark Navy, 079 Steel Grey



2558 Men's Pant \$45.90



8583
Ladies' Pant
\$47.90

FLEX CHINO PANTS & SHORTS

NEW STYLE



FEATURES:

- 95% Nylon / 5% Spandex
- Comfort stretch for increased comfort and movement
- Two curved front pockets and two back spade pockets

SIZES:

Men's 28-54, Scale H

Ladies' 0-32, Scale O

FIT:

Tailored

COLORS:

010 Black, 016 Ash Grey, 077 True Navy



2483 Men's Flat-Front Short **\$39.90**



2583 Men's Pant **\$47.90**



8483 Ladies' Flat-Front Short **\$39.90**



NEW STYLE

3465

Men's /

6465

Ladies'

Herringbone

Jacket

\$55.50



3460 Men's / **6460** Ladies' Jacket **\$55.50**

SWEATER KNIT OUTERWEAR



FEATURES:

- 3460/6460/3463/6463: 100% Polyester
- 3465/6465: 87% Polyester/13% Rayon Herringbone Jacquard Fleece
- Soft fleece fibers trap heat

SIZES:

Mens' S-6XL, Scale H

6460/6463: Ladies' XS-4XL, Scale O

6465: Ladies' XS-3XL, Scale O

FIT:

Traditional

COLORS:

113 Athletic Grey Heather,

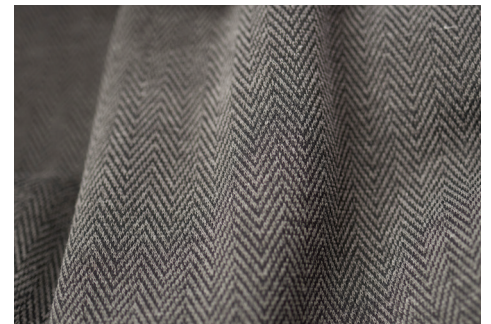
428 Blue Heather, 877 Steel Herringbone,

878 Navy Herringbone, 977 Black Heather



3463 Men's / **6463** Ladies' Vest **\$49.90**

	113	428	877	878	977
3460	▪	▪			▪
6460	▪	▪			▪
3463	▪	▪			▪
6463	▪	▪			▪
3465			▪	▪	
6465			▪	▪	



Popular herringbone pattern lends an air of distinction. (SHOWN PAGE 84)

A woman with long blonde hair, smiling, is wearing a grey zip-up jacket over a black top and black pants. She is walking towards the right. In the background, a man with short dark hair, also smiling, is wearing a dark navy blue zip-up jacket over a white shirt and dark pants, walking towards the left. The background is a blurred outdoor setting with a brick wall and a building.

3428
Men's /
6428
Ladies' Jacket
\$56.00



LIGHTWEIGHT SOFT SHELL JACKETS

NEW STYLE



FEATURES:

- 94% Polyester/6% Spandex
- 4-way stretch for increased flexibility
- Wind proof
- Full-length wind guard
- Two side pockets

SIZES:

Men's S-5XL, Scale H
Ladies' XS-3XL, Scale O

FIT:

Traditional

COLORS:

010 Black, 430 Deep Blue Heather,
865 Heather Grey



3428 Men's Jacket **\$56.00**



PERFORMANCE TEK JACKETS

NEW COLOR



FEATURES:

- 100% Bonded Polyester Fleece
- Full-length wind guard
- Stand-up collar
- Two-layer bonded fabric provides strength and durability

SIZES:

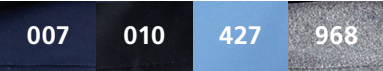
Men's S-6XL, Scale H
Ladies' XS-4XL, Scale O

FIT:

Traditional

COLORS:

007 Navy, 010 Black, 427 Ceil (new),
968 Grey Heather



Two-layer bonded fabric provides strength and durability.

3440 Men's / **6440** Ladies' Jacket **\$47.00**



5041 Ladies' Melange Camp Shirt
\$39.50



7279 Ladies' Tunic **\$44.00**



1039 Men's Melange Camp Shirt
\$39.50

MELANGE HOUSEKEEPING COLLECTION

NEW COLORS



FEATURES:

- 100% Polyester
- Ultra-Light fabric keeps you cool
- 3M Scotchgard™ finish
- Retail-inspired melange pattern

SIZES:

1039: Men's S-3XL, 4XLT-6XLT, Scale H
 4281: Men's S-4XL, Scale H
 Ladies' XXS-4XL, Scale O

FIT:

Traditional
 5041: Tailored

COLORS:

959 Cool Grey Heather,
 973 Burgundy Heather (new),
 977 Black Heather (new),
 981 Carolina Blue Heather





9097
3-Pocket Bib Denim
\$33.90



DENIM APRONS



FEATURES:

- 100% Cotton
- Bib Apron has two hip pockets and one chest pocket
- Aprons include two straps, but additional straps are available for mix & match looks
- Straps are 65% Polyester/35% Cotton and are 80"L x 1"W

SIZES:

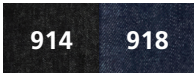
9097: 34"L x 28"W
 9098: 19"L x 28"W

FIT:

Traditional

COLORS:

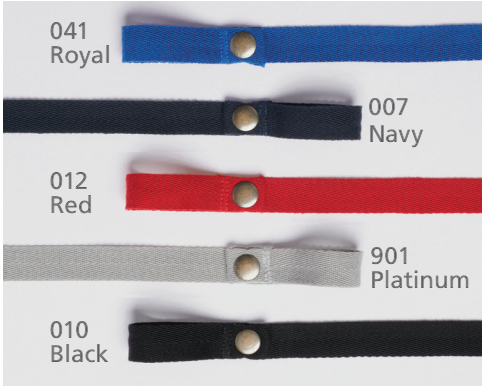
914 Black Denim, 918 Indigo Denim



9098 3-Pocket Waist Denim \$27.90



9091 Faux Leather Apron Straps (2-pack) \$9.98



9096 Herringbone Apron Straps (2-pack) \$7.98



9041
3-Pocket Waist Apron
\$17.00



9043 3-Pocket Bib Apron \$22.50

TWILL APRONS



FEATURES:

- 65% Polyester/35% Cotton Twill
- Bib Apron has two hip pockets and one chest pocket
- Aprons include two matching straps, but additional straps are available for mix & match looks
- Straps are 65% Polyester/35% Cotton and are 80" L x 1" W

SIZES:

9041: 19" L x 28" W

9043: 34" L x 28" W

FIT:

Traditional

COLORS:

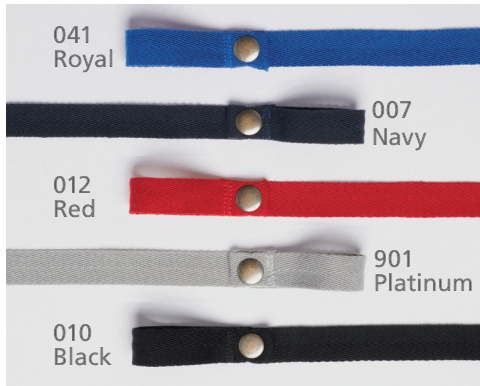
007 Navy, 010 Black, 012 Red, 041 Royal



922 Black

925 Brown

9091 Faux Leather Apron Straps (2-pack) \$9.98



041
Royal

007
Navy

012
Red

901
Platinum

010
Black

9096 Herringbone Apron Straps (2-pack) \$7.98



EDWARDS SATISFACTION GUARANTEE

At Edwards, before the label goes on our apparel, over 150 years of experience, quality and workmanship go into making it. We understand that what your employees wear is a reflection of your brand and you expect clothes that work, so we use quality fabrics, trims and finishes that enhance the life of the garment.

Edwards, family owned since 1867, stands behind every garment made and is confident that they will perform as designed. If you are not 100% satisfied with one of our products, you may return it for a replacement or refund within one year of purchase.

Edwards[®]
— EST. 1867 —

Edwards 4900 South 9th St. Kalamazoo, MI 49009-9552 Ph. 800.253.9885 Hours: 8 a.m.-7 p.m. EST
View our entire catalog at edwardsgarment.com