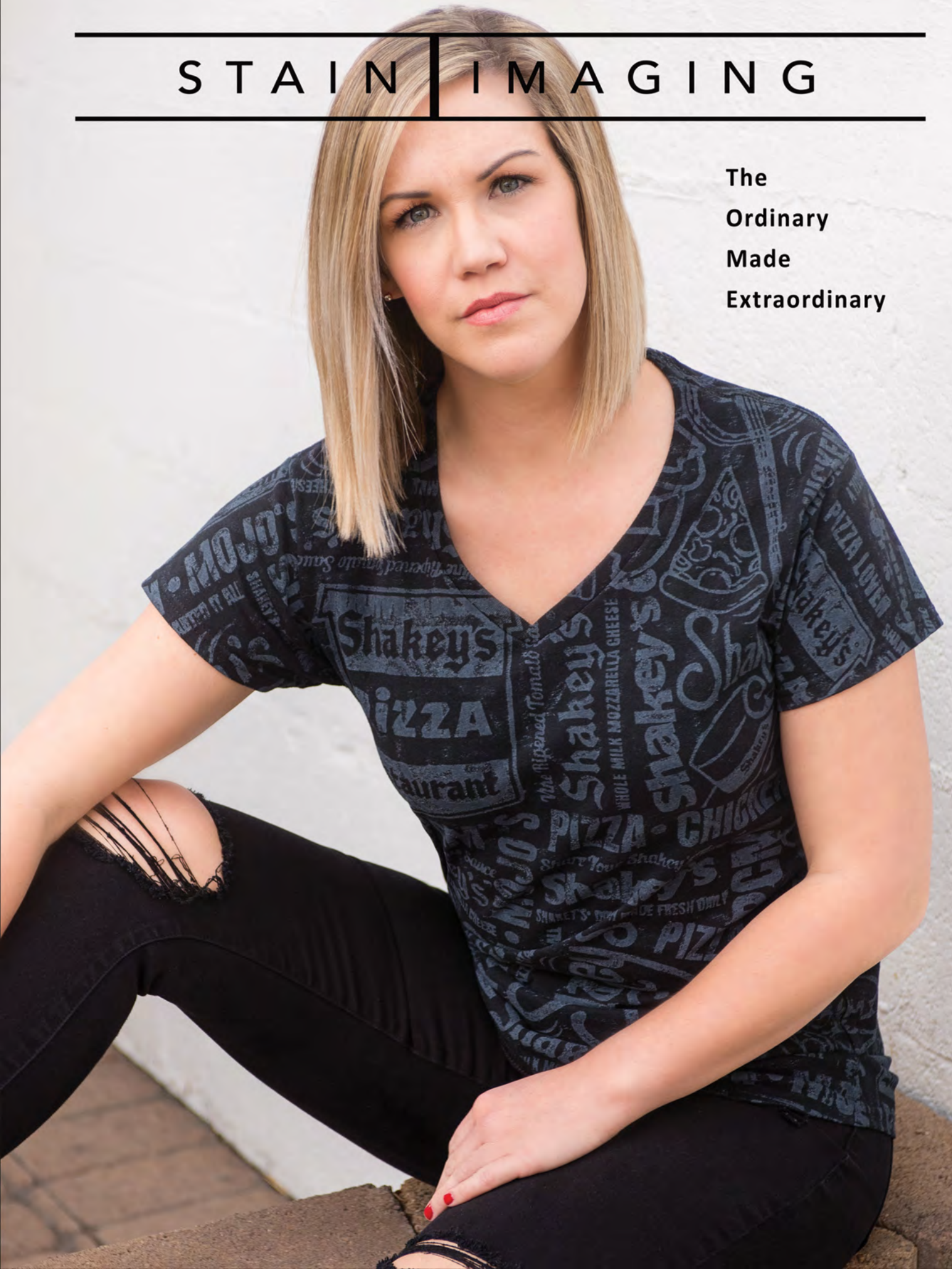

STAIN | IMAGING

The
Ordinary
Made
Extraordinary



- Themes
- Patterns
- Concepts
- Textures
- Colors



Now you can create your very own powerful and dynamic substrates using regular, ordinary product readily available from any distributor



1

Start with an ordinary blank cotton t-shirt



2

Employ Stain Imaging

3

Embellish for maximum perceived value



WHITE WASHED

Using our white stain is extremely common for its versatility on a medium to dark pallet. This produces a soft, consistent, more conservative 'washed' look that is 100% friendly for further traditional decoration on top such as screen printing, heat press, and even DTG. (5 shirt colors using the white wash; Each results in a lighter, tonal version of the shirt.)—

TONAL

By simply dialing in on a darker stain color than the shirt, we can maintain more control over the relationship between the shirt and stain color as well as the degree of contrast. This still allows the shirt to be friendly for further embellishment if desired. It is also the recommended direction to go when imaging on products that contain polyester.

BLACK WASHED

Using a black stain is another common, fairly versatile solution that delivers a more rustic, aggressive, masculine look with some attitude and edge. It can work on anything except the very darkest of shirt colors like black, navy, forest, chocolate, etc...

COLOR TINTS

Using lighter, brighter stain colors on darker garments is one of the more mysterious and exciting routes to take. Due to the semi-translucent, 'dye-like' stain, the darker shirt dominates the situation opening the door for some very intriguing looks on ordinary shirt colors. (Green on Black shirt; Teal on Navy shirt; Then Orange on Maroon and Chocolate shirts.)—

COLOR CONTRAST

Here is where you can really play up a dynamic color way or maximize contrast when you really need to have something that can stand alone, jump off the screen or shelf in a retail scenario, satisfy branding, or serve a situation that welcomes attention such as exploiting school colors.



The Benefits!

- include many logos / elements
- it creates distinctive branding
- you can expand on a theme
- it is domestically done
- a short 2 week turn
- it gets attention
- cost - friendly
- eco - friendly
- natural distress
- true individuality
- soft & comfortable
- we lay it out for you
- screen print friendly
- you supply the product
- 100% cotton or blends
- toddler-5XL in same run
- run multiple shirt colors
- run multiple shirt styles



Black Shirt — ○

● — Green Stain

○ — Navy Shirt

● — Teal Stain

○ — Chocolate Brown Shirt

● — Orange Stain

● — Orange Stain

○ — Navy Shirt

○ — Black Shirt

● — Gold Stain

○ — Jade Shirt

● — Yellow Stain

*Leaves the garment
very friendly for further
screen printing*

*Panther
PRIDE*

ANY THEME

*Not belt or jumbo
screen printing,
discharge printing,
sublimation nor
cut and sew*

*Indicative of a
specially 'treatment'
there is individuality
piece-to-piece*

*Can be done on
most any style
jersey knit, tanks or
short sleeved products*





*The dye-like 'stain'
bonds with the fabric
for a butter soft hand*

YOU CAN DREAM

*Domestically done
for quick turn around
and execution.*

*Efficiently done on
customer provided
goods to maximize
cost-friendliness*

WHAT IS STAIN IMAGING?

Allover screen print? Edge-to-edge sublimation? Cut-and-sew? A dyeing process? A weathering treatment or wash? Not exactly. Stain Imaging is a completely unique, alternative decorating technique that shares many characteristics with these known methods, but indeed is its own thing.

Things like:

- a soft hand that leaves the finished product very friendly for further traditional decoration.
- a semi translucent nature that will have influence from the original shirt color you start with.
- True individuality piece to piece in production where no two shirts are ever exactly the same.
- an inherent weathered nature with natural imperfections for an individual 'vintage' look.

WHAT MAKES IT UNIQUE?

Stain Imaging is done in a completely different way using proprietary machines built uniquely from the ground up. It is only done in one location in Utah. It's true uniqueness is an inherent bi-product of a totally different approach and methodology.

CAN I DO MY OWN CUSTOM DESIGN?

Absolutely! Although we do maintain an ever growing stock library, custom design is what it is all about. We are here to support design / layout and presentation at what ever level you may need from FREE service to FULL contract service creative. Please contact us directly for detailed discussion as situations can vary extensively.

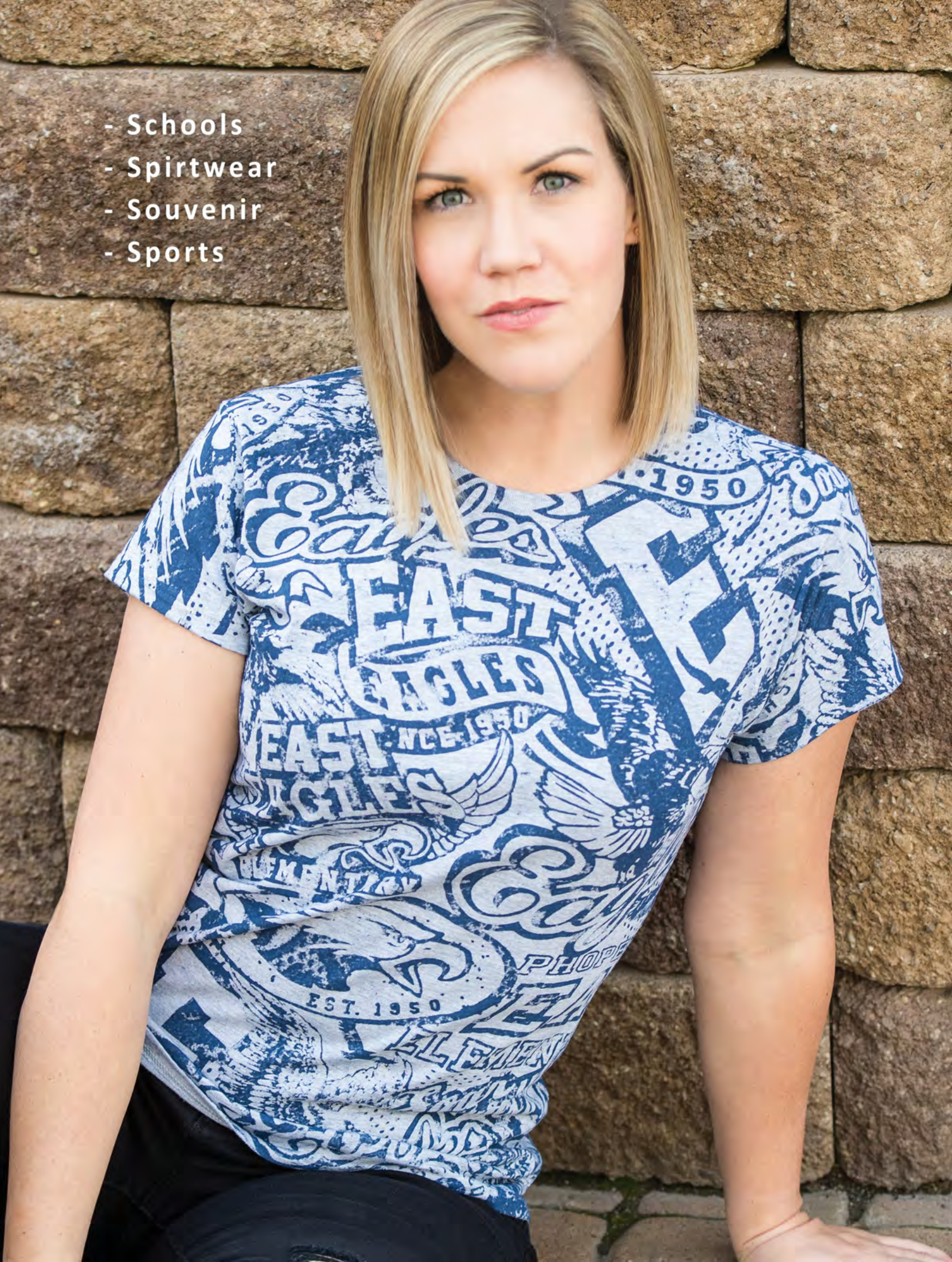
CAN I SUPPLY MY OWN SHIRTS?

Absolutely! With you providing the product, you control your cost, making more jobs doable. This also allows you to use the brands and styles you prefer.

WHAT IS THE TURN AROUND TIME?

We ship orders up to 5,000 pieces in 2 weeks or less from receipt of PO, approval of art and receipt of goods. Larger orders are subject to a negotiated time frame.

- Schools
- Spirtwear
- Souvenir
- Sports



DO THE SHIRTS HAVE TO BE 100% COTTON?

Although we do encourage 100% cotton products, it is not necessarily mandatory. The technique is quite friendly for most poly blends. We do not recommend triblends and 100% poly 'wicking' performance products. Weight can play a role in image quality and in the 4oz-4.5oz range, we recommend product with 30 singles.

For goods containing polyester, we DO NOT recommend our 'white-wash' look on darker product. Results are extremely subtle and in some cases almost invisible. For polyester content products to be successful, we need to image with a DARKER stain than the shirt color(s).

IS IT POSSIBLE TO PRINT ON TOP OF A STAINED SHIRT?

Absolutely! In fact, this was the original intent from it's inception. To simply be a way to create interesting backgrounds for further decoration in much the same way as old stone washes or mineral/enzyme washes or tie dyes. Staining is a great way to create 'multi-media' pieces with a higher perceived market value.

This technique shares many characteristics with weathering garment washes and dye treatments one of which is that it leaves the garment friendly for further traditional decoration right over the top. No different than screen printing on a mineral wash or tie dye. It is also soft and integrated into the garment, semi-translucent, has a weathered, distressed, 'vintage' look, and imparts true individuality piece to piece in production.

HOW DO WE SUPPLY ART?

We ultimately need to work in vector art. If you send bitmap images, we will assess and let you know if they can be easily converted or if they may be subject to separate compensation to convert, interpret and/or redraw them for our needs and best results.

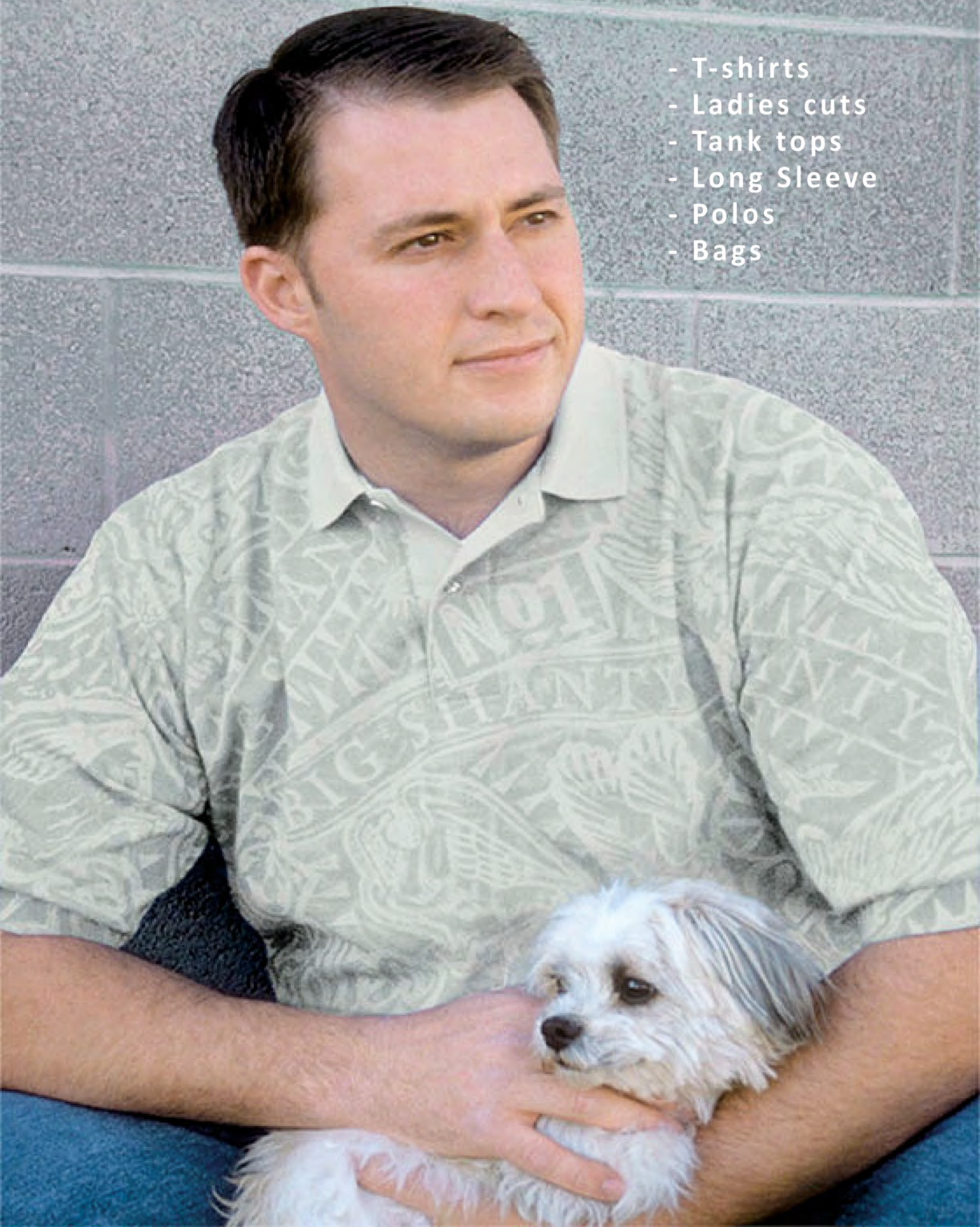
If possible, we prefer to have a single PDF file sent containing 1/ea of all the components that are to make up the piece. PDF continues to prove to be the most universally friendly if vector art.

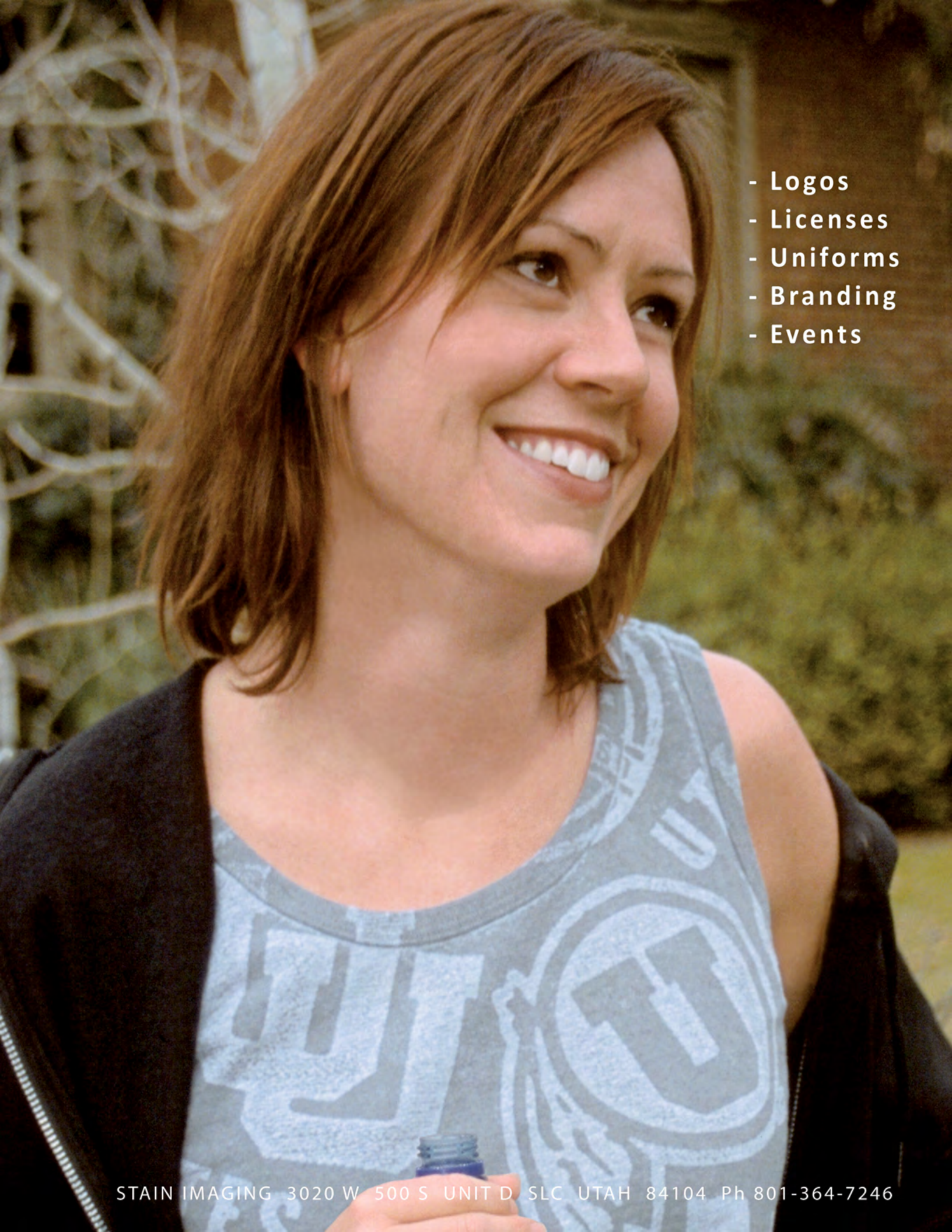
NOTE: Art components need to be void of grays, and gradients whether bitmap or vector images.



Miss Billie's
KIDSKAMPUS
SUMMER KAMP

- T-shirts
- Ladies cuts
- Tank tops
- Long Sleeve
- Polos
- Bags

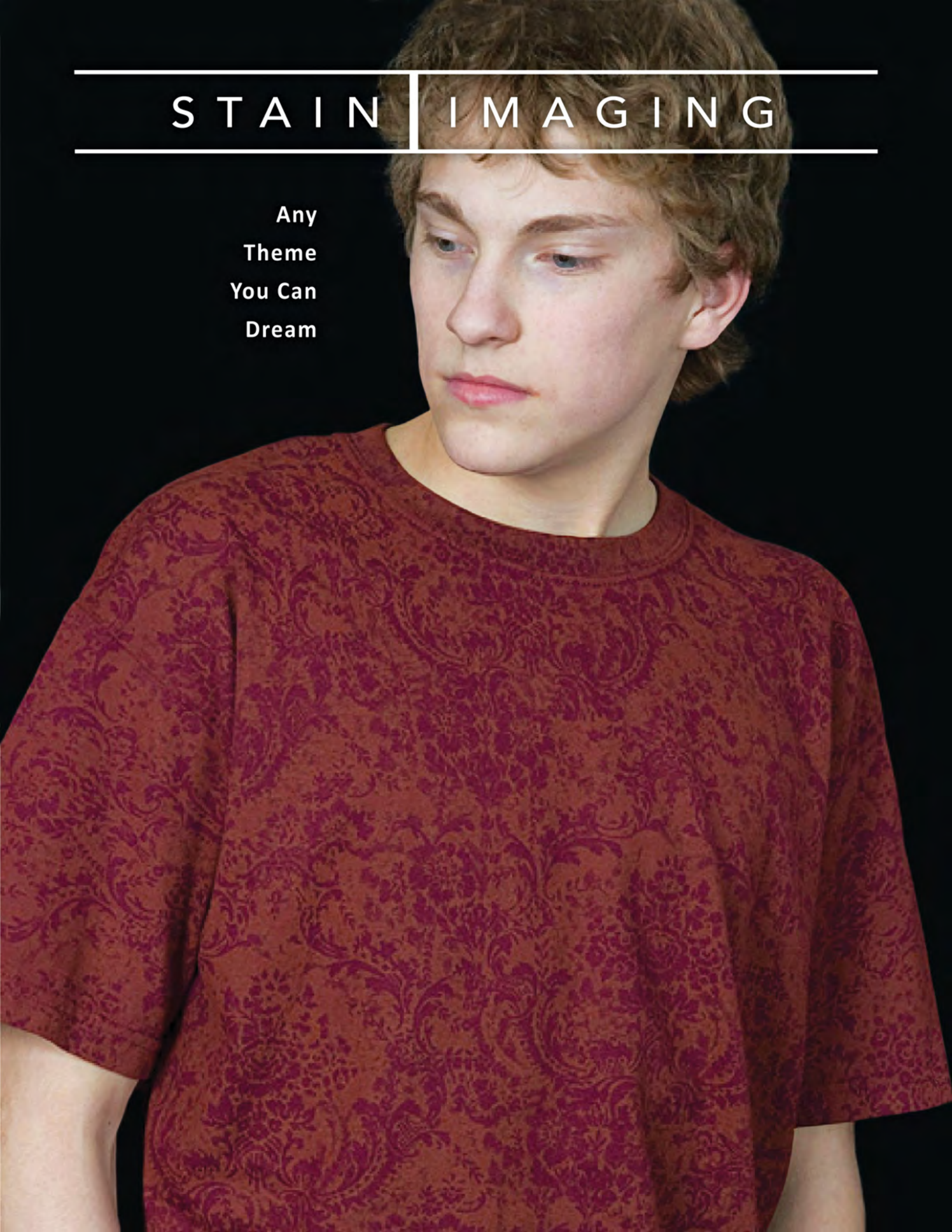


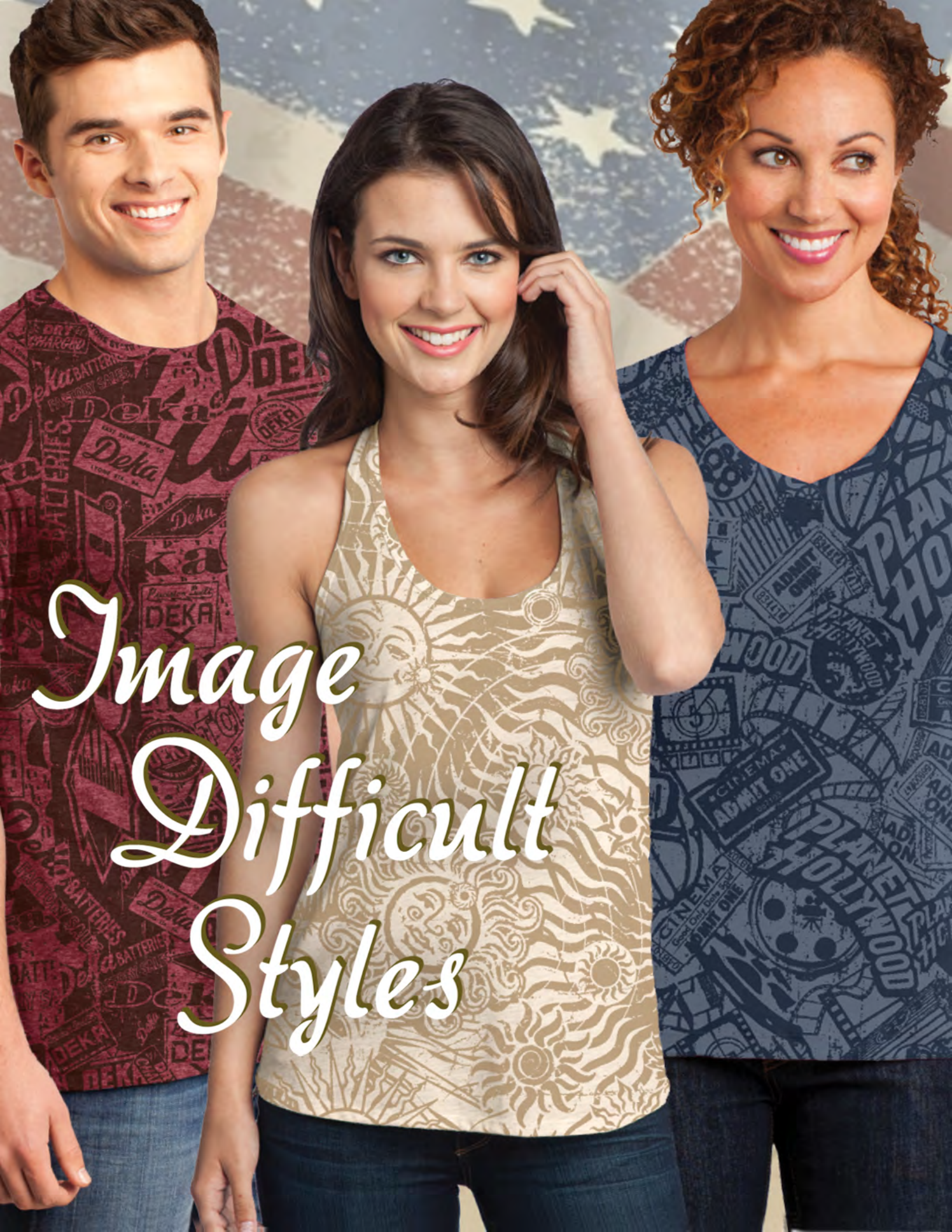


- Logos
- Licenses
- Uniforms
- Branding
- Events

STAIN | IMAGING

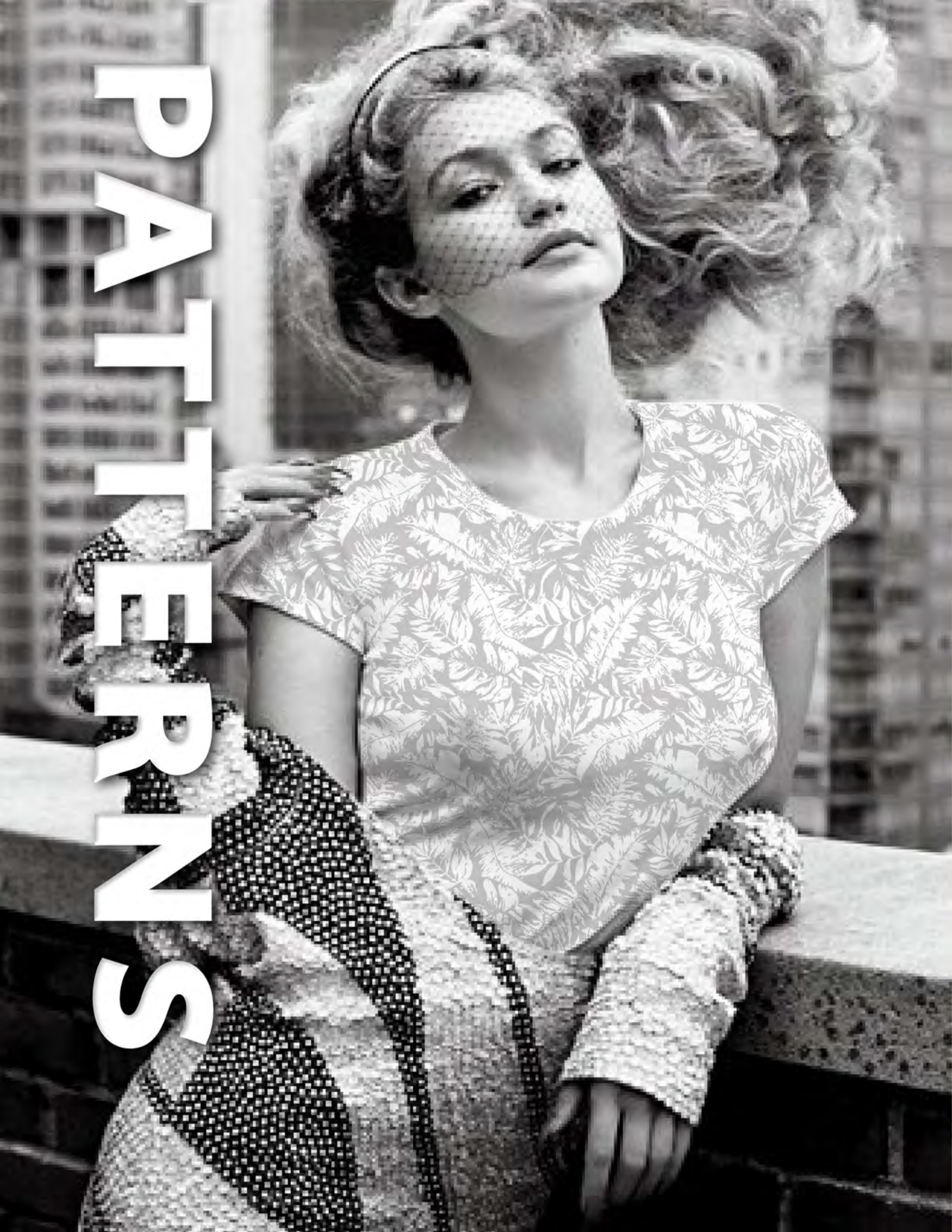
Any
Theme
You Can
Dream





*Image
Difficult
Styles*

PATTERNS



THINK OUTSIDE THE BOX



**WE GOT
SPIRIT,
YES WE
DO!**



SPORT --- CAMPS



COOL.
CUSTOM.
UNIQUE.

Warm All over



**CUSTOM
ALL OVER
LONG SLEEVES**

Custom

ALL OVER



SPECIAL
EVENTS



CUSTOM

Branding

START
WITH
WHITE



BRING TEES TO

Life!

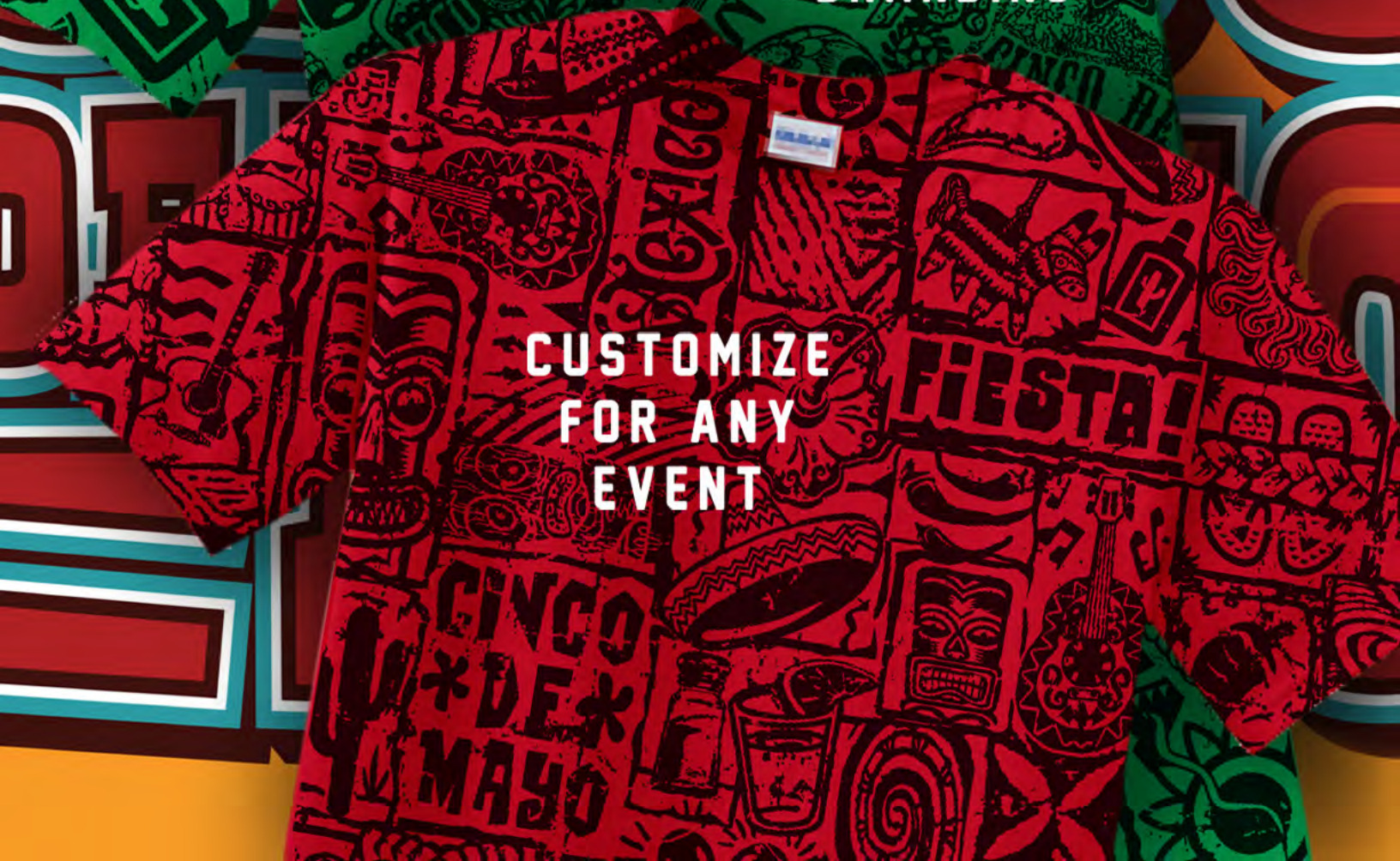
GILDAN
Heavy Cotton
Tag-Free Label

OFFER SOMETHING OUT OF THIS WORLD

Mexicana



**GREAT FOR
RESTAURANT
BRANDING**



**CUSTOMIZE
FOR ANY
EVENT**

Festivals



**MAKE
EVENTS
MEMORABLE**

Micro Breweries

**BREW UP
SOMETHING
WITH FULL
BODY**



THROW A CURVE BALL

ANGELS



USE WHITE STAIN ON A DARKER SHIRT PALLET FOR A TONAL, VINTAGE LOOK

SHIRTS WITH

Heart & SOLE

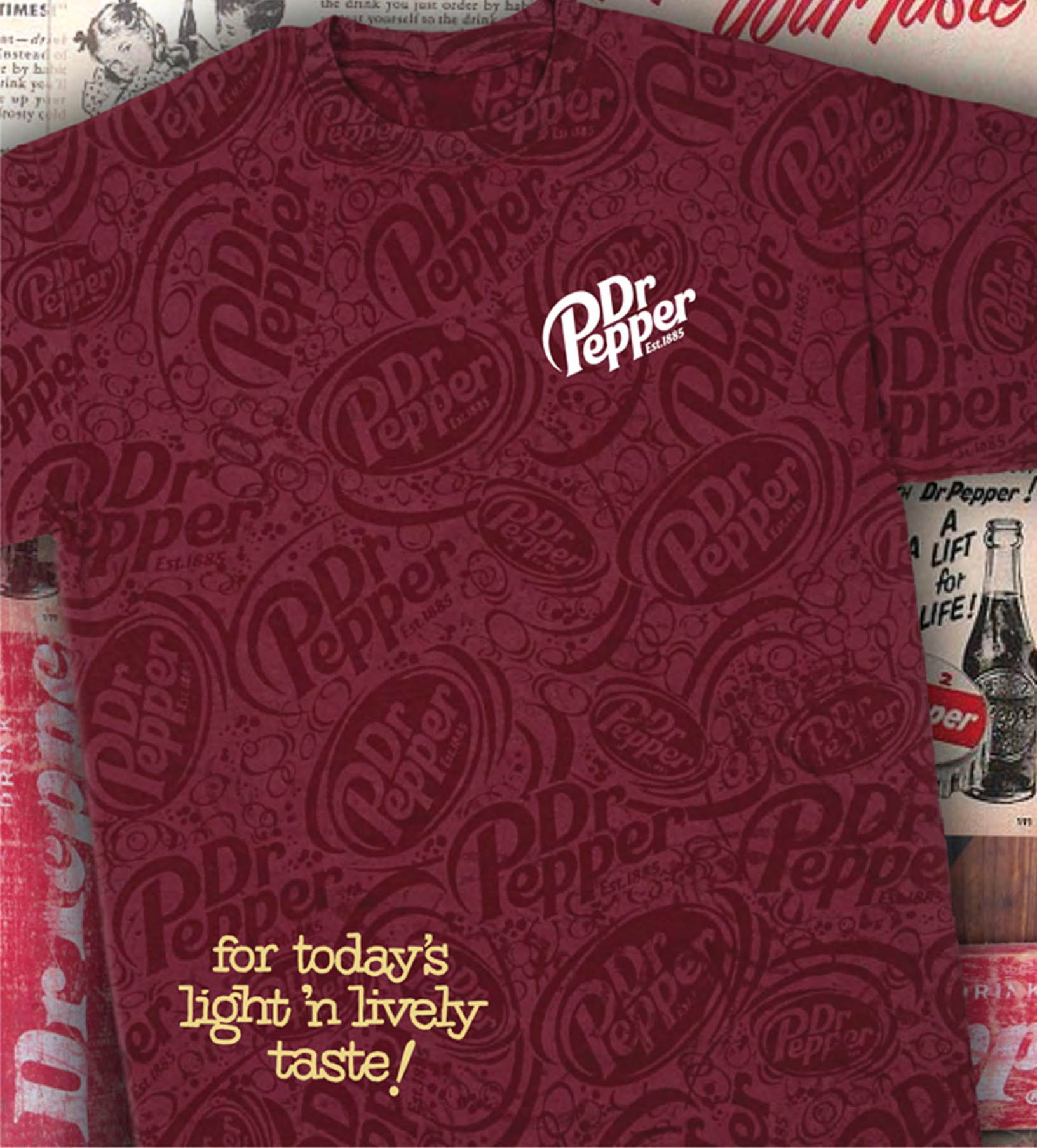


ANY
CUSTOM
THEME
YOU CAN
DREAM
!!!

SOMETHING
COOL
FOR THE
SWEET
HEAT



INSTEAD of The Same Old Thing...
Distinctively™
Different...
Wake Up Your Taste



Dr Pepper
EST. 1885

for today's
light 'n lively
taste!



make your own

LUCK



KILTIES
SCOTTISH PUB



NO
TWO
SHIRTS
THE
SAME
!!!

ANY
CUSTOM
THEME
YOU CAN
DREAM
!!!

Get Independence

UNIQUE.
CUSTOM.
COOL.

ANY
CUSTOM
THEME
YOU CAN
DREAM
!!!

RED SHIRT

INDIGO SHIRT

WHITE STAIN

NAVY STAIN

IT'S
TIME
TO
START
ALL
OVER



RETREATS



ANY
CUSTOM
THEME
YOU CAN
DREAM
!!!

Make Your Own Tees

RACE!



Navy

Chocolate

Maroon

Black

(all shirts run with orange stain)

STURGIS

GILDAN
Heavy Cotton

ANY
CUSTOM
THEME
YOU CAN
DREAM
!!!

Uniquely INDIVIDUAL

NO

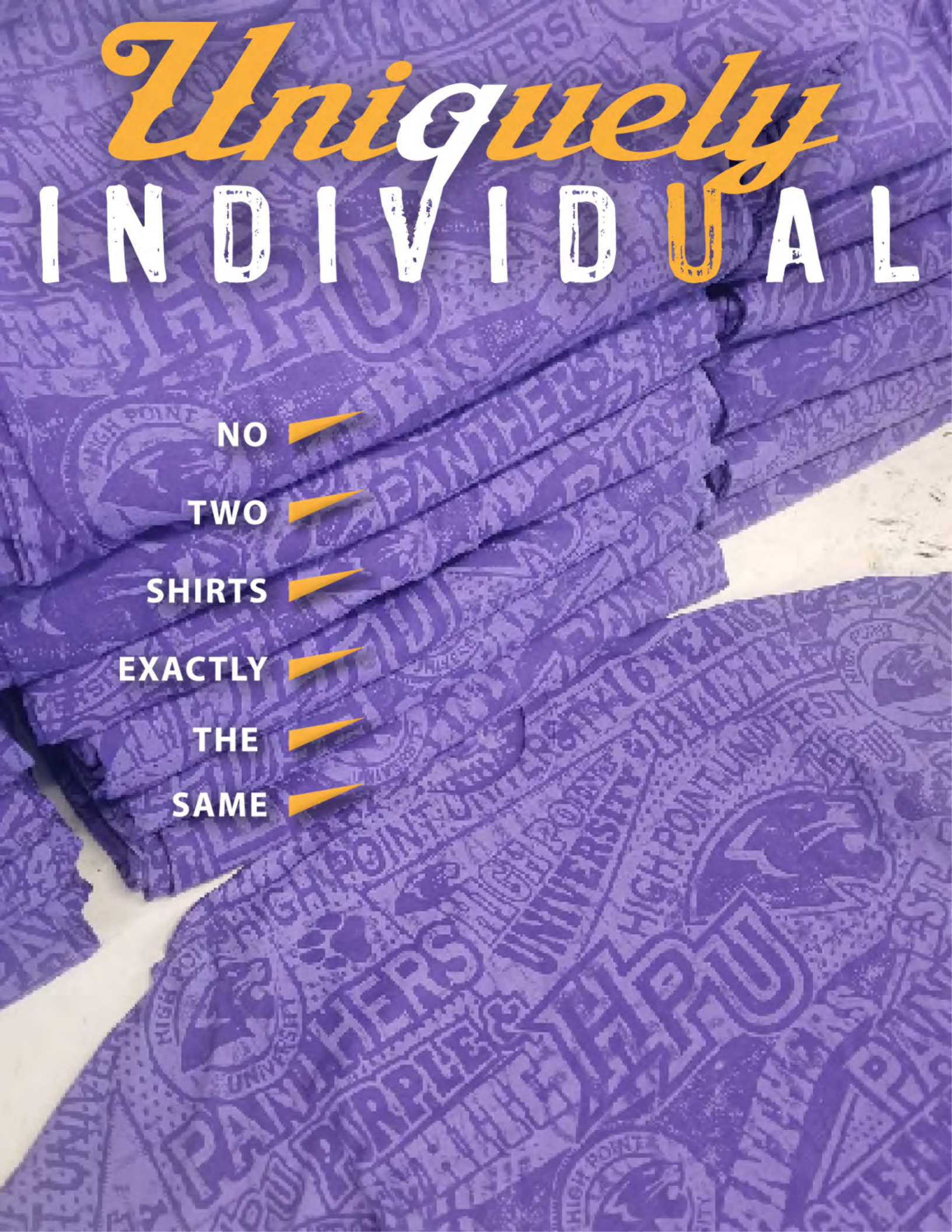
TWO

SHIRTS

EXACTLY

THE

SAME



Transform



Your
Basic
T-shirt



Friendly
for Further
Decoration

THANK YOU



U
HEALTH
UNIVERSITY OF CALIFORNIA

