



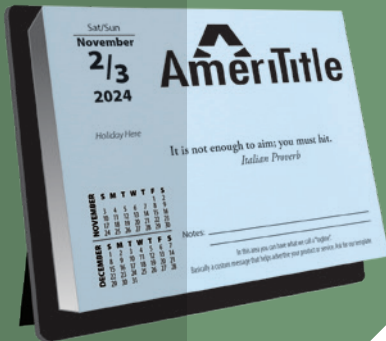
UPIC bkpress | SAGE 67679  
PPAI 267931 | ASI 40601



2023-2024

# CATALOG

Expires: 06/30/2024



**A+ SAGE  
5 Star ASI**



**All Products  
Made in the USA**



**CPSIA & Prop 65  
Compliant**

NAME PERSONALIZED CALENDARS | CUSTOM PHOTO CALENDARS | DAILY DATE CALENDARS  
PUZZLE BOOKS | SCRATCH PADS | NOTEBOOKS | DESK PADS | CUSTOM PROJECTS



Welcome to Black Knight's line of printed products. Our wish is to be a part of your successful marketing plans. We are proud of several facts that may be of interest to you:



We maintain the highest distributor ratings available in the industry



All products are CPSIA and California Proposition 65 compliant and do not require labeling



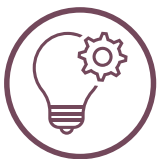
All products are printed and assembled in the USA



We use environmentally responsible products and techniques in our production processes



All products are made to order, which allows for individual page customization and calendars that can start with any month



Have a special project? We welcome custom projects







## Stock Monthly Images

### MA-400 Acrylic Calendar

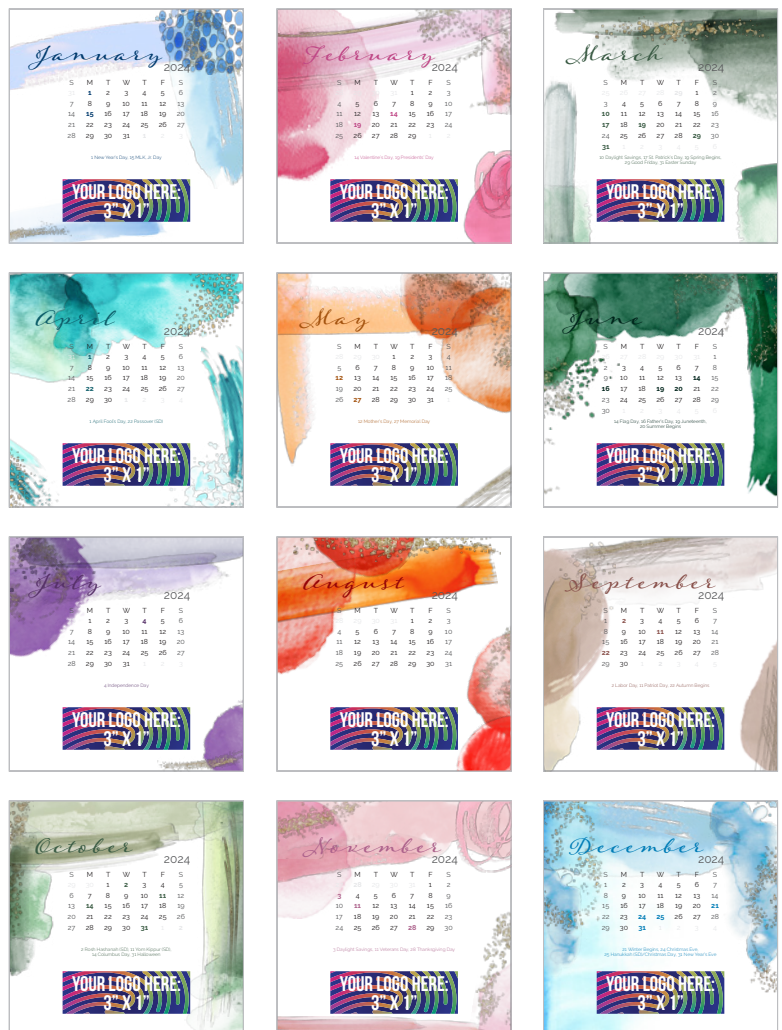
<b>Final Size</b>	5 1/2" x 5 1/2"
<b>Imprint Area</b>	3" x 1", full color
<b>Paper Stock</b>	100 lb. uncoated cover
<b>Finishing</b>	individually shrink-wrapped
<b>Set-up</b>	\$30 (t) with print-ready art

### Product Description

The calendar is 12 loose monthly sheets plus a cover with the stock design as shown. The loose sheets lay flat against the assembled stand. Each page comes with a full color imprint and U.S. or Canadian holidays. The calendar is individually shrink-wrapped.

### Additional Options

<b>Custom Layout</b>	\$100 (t) with print-ready art
<b>Additional Months</b>	add 7% per month
<b>Physical Proof</b>	\$30 (t). PDF proof no charge



<b>Qty</b>	<b>100</b>	<b>250</b>	<b>500</b>	<b>1000</b>
<b>Price</b> 1 sided print	10.00	9.50	9.00	8.50

R

# CONTENTS

## 03 NEW STOCK PHOTO CALENDAR

## 05 NAME PERSONALIZED CALENDARS

- 06 Desk Calendars
- 09 Wall Calendars
- 10 Image Sets
- 14 Name Personalized Info & FAQ

## 16 CUSTOM PHOTO CALENDARS

- 17 Desk Calendars
- 20 Wall Calendars
- 22 Single Photo Wall Calendars

## 24 STOCK PHOTO CALENDARS

- 25 Desk Calendars
- 26 Wall Calendars
- 27 Image Sets

## 29 DAILY CALENDARS

- 30 Calendar Styles
- 31 Additional Options

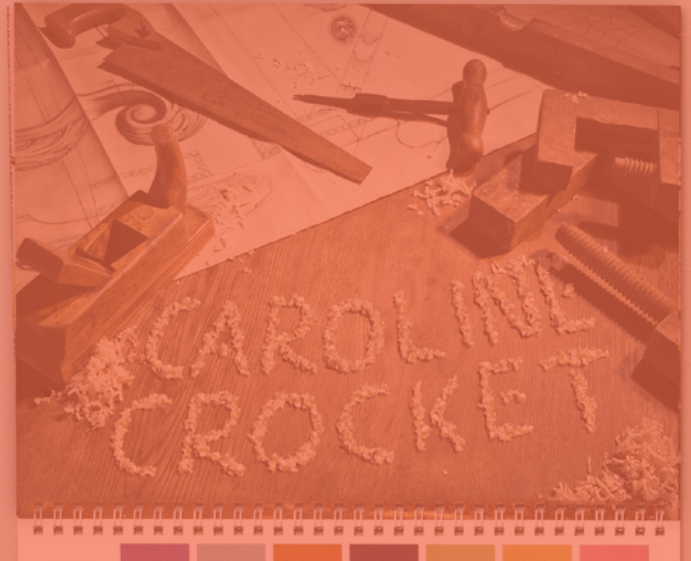
## 32 DESK PAD CALENDARS

- 33 Black Desk Pad (17"x11")
- 34 Full Color Desk Pad (17"x12")

## 35 MISCELLANEOUS

- 36 Scratch Pads
- 37 Notebooks
- 38 Puzzle Books

## 39 GENERAL INFORMATION



# NAME PERSONALIZED CALENDARS

Name Personalized calendars have a person's name written in the image in a unique and innovative way. You supply your excel database of names and we will create a unique calendar for every recipient in your list with their name written in every month's picture.





# DESK CALENDARS



<b>Qty</b>	<b>50</b>	<b>100</b>	<b>250</b>	<b>500</b>	<b>1000</b>
<b>Price</b> 1 sided print	6.00	5.40	4.75	4.50	4.25

R

## MC-475 CD Case Calendar

<b>Final Size</b>	4 5/8" x 5 7/8"
<b>Imprint Area</b>	1 3/4" x 1 1/2", full color
<b>Picture Area</b>	4 5/8" x 3"
<b>Paper Stock</b>	80 lb. coated cover
<b>Envelopes</b>	corrugated box \$.90 (t)
<b>Set-up</b>	none, with print-ready art

### Product Description

12 loose monthly sheets plus a cover with the recipient's name personalized in every picture. The sheets are inserted into a clear CD jewel case that works as the calendar stand when the lid is flipped back to a 45° angle. Each page comes with a full color imprint and U.S. or Canadian holidays.



<b>Qty</b>	<b>50</b>	<b>100</b>	<b>250</b>	<b>500</b>	<b>1000</b>
<b>Price</b> 1 sided print	10.00	9.60	9.30	8.90	8.50

R

## MA-475 Acrylic Calendar

<b>Final Size</b>	4 5/8" x 5 7/8"
<b>Imprint Area</b>	1 3/4" x 1 1/2", full color
<b>Picture Area</b>	4 5/8" x 3"
<b>Paper Stock</b>	100 lb. uncoated cover
<b>Finishing</b>	individually shrink-wrapped
<b>Set-up</b>	none, with print-ready art

### Product Description

12 loose monthly sheets plus a cover with the recipient's name personalized in every picture. The loose sheets lay flat against the assembled stand. Each page comes with a full color imprint and U.S. or Canadian holidays. The calendar is individually shrink-wrapped.



## MF-175B Tent-Style Calendar

<b>Final Size</b>	5 1/2" x 2 5/8"
<b>Imprint Area</b>	2" x 5/8", full color
<b>Picture Area</b>	3" x 2"
<b>Paper Stock</b>	100 lb. coated text
<b>Envelopes</b>	bubble env. \$.60 (t)
<b>Binding</b>	black metal twin-loop
<b>Set-up</b>	none, with print-ready art

### Product Description

Mini tent-style calendar printed on both sides with the recipient's name personalized in every picture and full color imprint. The calendar prints on a black background and is attached with black metal twin-loop binding to a black tent-style stand.



<b>Qty</b>	<b>100</b>	<b>250</b>	<b>500</b>	<b>1000</b>
<b>Price</b> 2 sided print	4.90	4.60	4.20	4.00

R



Qty	100	250	500	1000
Price 2 sided print	4.70	4.40	4.00	3.80

R

## MF-275 Tent-Style Calendar

<b>Final Size</b>	5 1/2" x 2 5/8"
<b>Imprint Area</b>	2" x 3/4", full color
<b>Picture Area</b>	3 1/8" x 2 1/4"
<b>Paper Stock</b>	100 lb. coated text
<b>Envelopes</b>	bubble env. \$.60 (t)
<b>Binding</b>	white (default) or black metal twin-loop
<b>Set-up</b>	none, with print-ready art

### Product Description

Mini tent-style calendar with the recipient's name personalized in every picture and full color imprint.



Qty	50	100	250	500	1000
Price 2 sided print	6.50	6.10	5.80	5.50	5.30

R

## MF-475 Tent-Style Calendar

<b>Final Size</b>	4 3/4" x 5 1/4"
<b>Imprint Area</b>	1 3/4" x 1 1/2", full color
<b>Picture Area</b>	4 3/4" x 3"
<b>Paper Stock</b>	100 lb. coated text
<b>Envelopes</b>	bubble env. \$.60 (t)
<b>Binding</b>	white (default) or black metal twin-loop
<b>Set-up</b>	none, with print-ready art

### Product Description

Tent-style calendar with the recipient's name personalized in every picture, full color imprint and U.S. or Canadian holidays.



Qty	50	100	250	500	1000
Price 2 sided print	8.00	7.50	7.10	6.50	6.30

R

## MF-575B Tent-Style Calendar

<b>Final Size</b>	5 1/2" x 5 1/2"
<b>Imprint Area</b>	1 7/8" x 1 1/8", full color
<b>Picture Area</b>	4 1/4" x 2 3/4"
<b>Paper Stock</b>	100 lb. coated text
<b>Envelopes</b>	bubble env. \$.60 (t)
<b>Binding</b>	black metal twin-loop
<b>Set-up</b>	none, with print-ready art

### Product Description

Tent-style calendar printed on both sides with the recipient's name personalized in every picture and full color imprint. The calendar prints on a black background and is attached with black metal twin-loop binding to a black tent-style stand.



### MF-675 Tent-Style Calendar

<b>Final Size</b>	11" x 5 1/2"
<b>Imprint Area</b>	3 1/4" x 1", full color
<b>Picture Area</b>	4 3/4" x 3 1/2"
<b>Paper Stock</b>	100 lb. coated text Add \$1.00 (r) for 80 lb. cover stock
<b>Envelopes</b>	bubble env. \$.90 (t)
<b>Binding</b>	white (default) or black metal twin-loop
<b>Set-up</b>	none, with print-ready art

#### Product Description

Tent-style calendar with the recipient's name personalized in every picture, full color imprint and U.S. or Canadian holidays.

Qty	50	100	250	500	1000
<b>Price</b> 2 sided print	9.20	8.50	8.10	7.50	7.20

R



### MF-775 Tent-Style Calendar

<b>Final Size</b>	5 1/4" x 8"
<b>Imprint Area</b>	2 1/2" x 1", full color
<b>Picture Area</b>	5 1/4" x 3 3/8"
<b>Paper Stock</b>	100 lb. coated text Add \$.60 (r) for 80 lb. cover stock
<b>Envelopes</b>	bubble env. \$.80 (t)
<b>Binding</b>	white (default) or black metal twin-loop
<b>Set-up</b>	none, with print-ready art

#### Product Description

Tent-style calendar with the recipient's name personalized in every picture, full color imprint and U.S. or Canadian holidays.

Qty	50	100	250	500	1000
<b>Price</b> 2 sided print	8.40	7.50	6.80	6.30	6.00

R



### MF-875 Tent-Style Calendar

<b>Final Size</b>	8 1/2" x 5 1/2"
<b>Imprint Area</b>	3" x 1 1/8", full color
<b>Picture Area</b>	4 1/4" x 3 3/8"
<b>Paper Stock</b>	100 lb. coated text Add \$.60 (r) for 80 lb. cover stock
<b>Envelopes</b>	bubble env. \$.90 (t)
<b>Binding</b>	white (default) or black metal twin-loop
<b>Set-up</b>	none, with print-ready art

#### Product Description

Tent-style calendar with the recipient's name personalized in every picture, full color imprint and U.S. or Canadian holidays.

Qty	50	100	250	500	1000
<b>Price</b> 2 sided print	8.20	7.30	6.60	6.10	5.80

R



### MF-725 Tent-Style Calendar

<b>Final Size</b>	5 1/2" x 7"
<b>Imprint Area</b>	2 1/4" x 1", full color
<b>Picture Area</b>	5 1/2" x 3 1/4"
<b>Paper Stock</b>	100 lb. coated text
<b>Envelopes</b>	bubble env. \$.80 (t)
<b>Binding</b>	white (default) or black metal twin-loop
<b>Set-up</b>	none, with print-ready art

#### Product Description

Tent-style calendar with the recipient's name personalized in every picture, full color imprint and U.S. or Canadian holidays.

Qty	50	100	250	500	1000
<b>Price</b> 2 sided print	8.20	7.30	6.60	6.10	5.80

R



## WA-805 Wall Calendar

<b>Final Size</b>	11" x 17" (open) 11" x 8 1/2" (closed)
<b>Imprint Area</b>	6 1/4" x 1 1/4", full color
<b>Picture Area</b>	11" x 8 1/2"
<b>Paper Stock</b>	80 lb. coated cover Deduct \$.60 (r) for 80 lb. coated text
<b>Envelopes</b>	bubble env. \$1.00 (t)
<b>Binding</b>	white (default) or black metal twin-loop
<b>Set-up</b>	none, with print-ready art

### Product Description

Large size, middle twin-loop bound wall calendar (11"x17" open) with the recipient's name personalized in every picture. Features a full color imprint, previous and next month previews, and U.S. or Canadian holidays.

<b>Qty  </b>	<b>25</b>	<b>50</b>	<b>100</b>	<b>250</b>	<b>500</b>	<b>1000</b>
<b>Price  </b>	15.50	14.25	12.50	11.50	11.00	10.25

R



## WB-835 Wall Calendar

<b>Final Size</b>	8 1/2" x 11" (open) 8 1/2" x 5 1/2" (closed)
<b>Imprint Area</b>	2" x 1 5/8", full color
<b>Picture Area</b>	8 1/2" x 5 1/2"
<b>Paper Stock</b>	80 lb. coated cover Deduct \$.40 (r) for 80 lb. coated text
<b>Envelopes</b>	bubble env. \$.80 (t)
<b>Binding</b>	white (default) or black metal twin-loop
<b>Set-up</b>	none, with print-ready art

### Product Description

Mini size, middle twin-loop bound wall calendar (8 1/2" x 11" open) with the recipient's name personalized in every picture. Features a full color imprint, previous and next month previews, and U.S. or Canadian holidays.

**\*Smaller than the traditional size but great for tight spaces and more economical!**

<b>Qty  </b>	<b>50</b>	<b>100</b>	<b>250</b>	<b>500</b>	<b>1000</b>
<b>Price  </b>	8.00	7.70	7.10	6.50	6.20

R

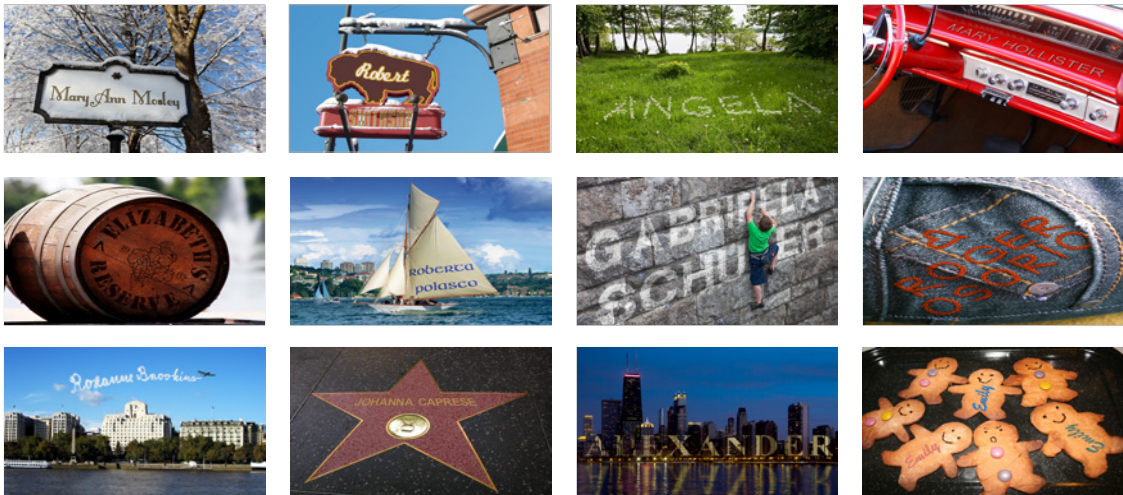


# IMAGE SETS



## ★ ALL STARS 1

\*Some images on this set can only hold a First Name.



## ★ ALL STARS 2

\*Some images on this set can only hold a First Name.



## ★ ALL STARS 3

\*Some images on this set can only hold a First Name.



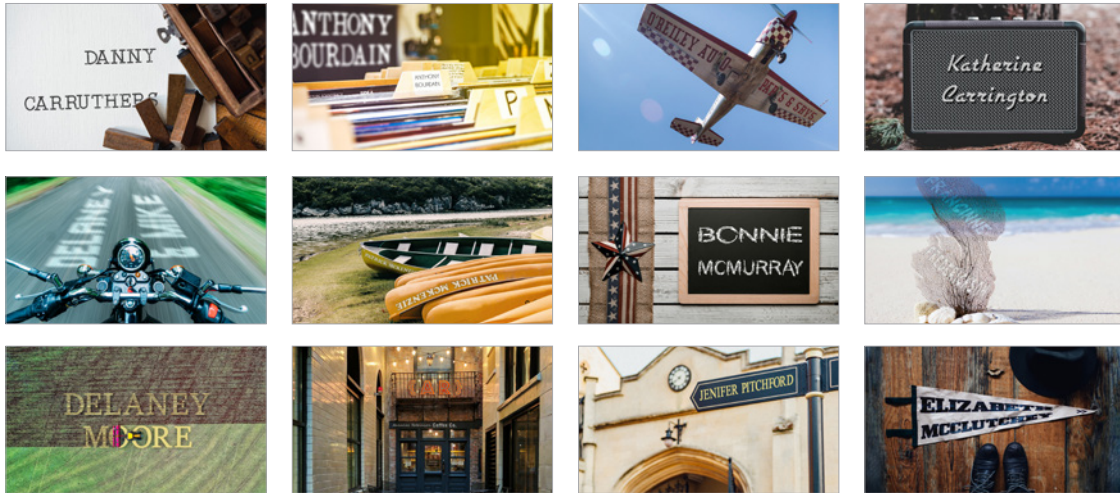






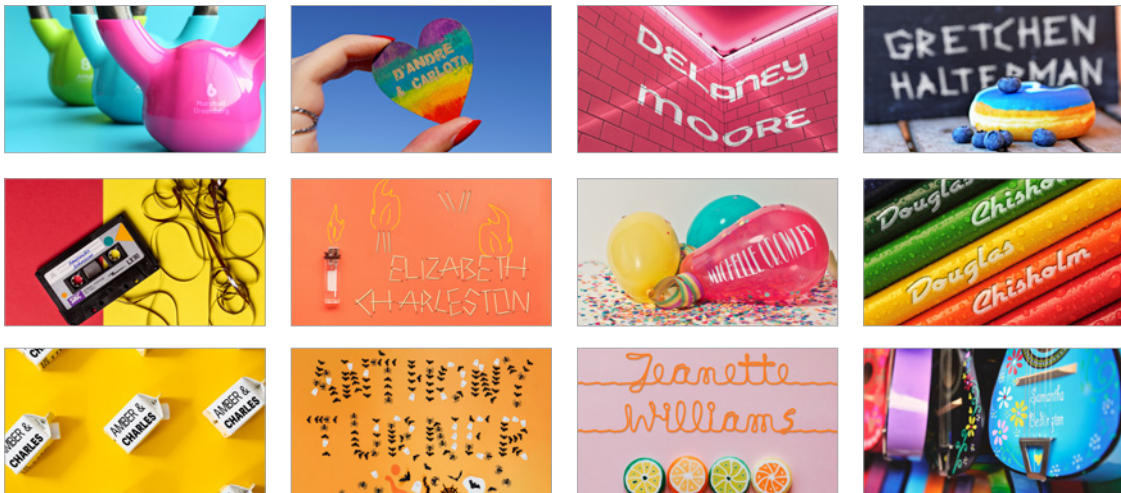
**19 NINETEEN**

\*First & Last Names on all 12 pictures. Accepts: & -



**20 TWENTY**

\*First & Last Names on all 12 pictures. Accepts: & - '



**21 TWENTY-ONE**

\*First & Last Names on all 12 pictures. Accepts: & -





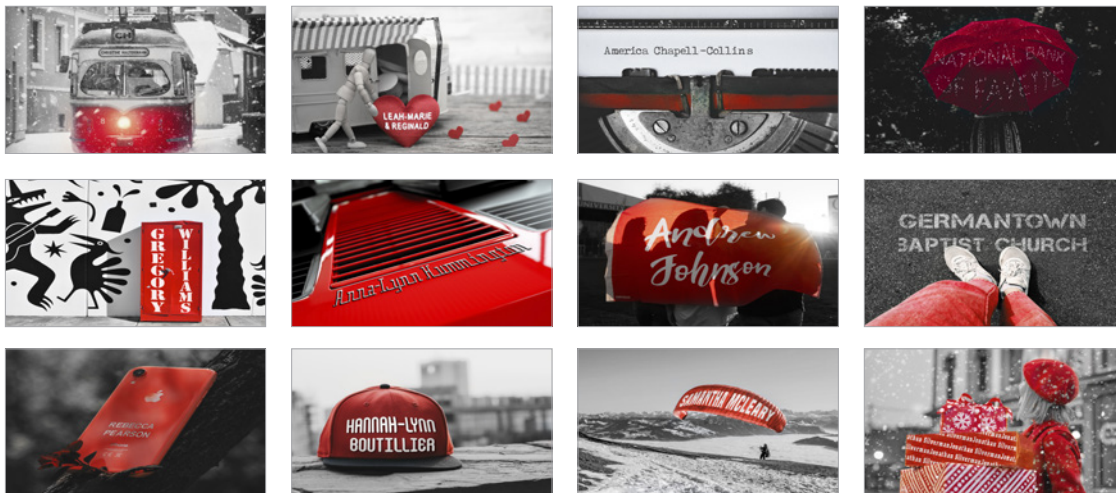
**22 TWENTY-TWO**

\*First Names only on all images



**R RETRO**

\*First & Last Names on all 12 pictures. Accepts: & - '



**S SCARLET**

## FREQUENTLY ASKED QUESTIONS

### Can both, first and last name be included in the images?

It depends. Some images have the space available to include both first and last name, others do not. Trying to fit both names in an image that is not meant to hold both names will produce unrealistic results. The cover will include first and last name.

### Can less than 100 names/calendars be ordered?

Yes. For items with a published minimum of 100, the absolute minimum is 50 with a 15% less than minimum fee added to the 100 column price.

### Is there a set-up fee?

There is no set-up if you use one of our pre-determined image sets, use the standard cover & layout and run the calendar for 12 months. You must also submit print-ready artwork for the imprint area(s). Typesetting or artwork alterations made on our end will incur additional charges.

### Do you send a proof before printing?

Yes. You should receive a virtual PDF proof of your calendar within 5 business days from receipt of your properly formatted data and logo file. The proof will include the logo and one name from your data file. Additional proofs are \$40 (t).

### Can I personalize the image area with a company name rather than a person's name?

Sure! However, keep in mind that company names are sometimes long and as a result the image personalization may look unrealistic. In your spreadsheet enter the entire company name in the First Name column and choose from an image set that can hold First and Last Name on all images.

### Can I submit my own images for personalization?

It can be done, however, images will need to be submitted for review since not all images are suitable for personalization. Submitting your own images will incur an additional set-up cost per image varying on image complexity.

### What is the character limit on names?

We recommend 13 characters or less for First Name and 13 or less for Last Name depending on the image. Longer names can be used, but the quality of print is not guaranteed.

### What if we need a few more calendars?

We offer a one (1) time re-order for a 12 quantity minimum at the same unit price as the original order on all name personalized calendar orders. Re-orders will run exactly as previous order. Changes to calendar features cannot be made and no proof will be sent.

### Can I order blank calendars?

No, with the name personalization program each calendar must have a name. As an alternative, for a 100 qty. minimum, our stock photo calendars on page 27 can be ordered with the "seasonal" theme.

## ADDITIONAL NAME PERSONALIZED CALENDAR OPTIONS

<b>Mid-year Start Month</b>	No charge (run for 12 consecutive months)
<b>Additional Months or Insert Sheets</b>	\$120 (t) set-up plus 7% for each additional month or insert.
<b>Canadian Holidays</b>	No charge (using factory predetermined list of holidays). Please note this option on your PO as U.S. holidays are default.
<b>Special Date Inclusion</b>	\$120 (t) set-up, up to 20, submitted in specific format. Not available on all styles.
<b>Optional Covers</b>	(See pg. 15): \$20 (t)
<b>Custom Cover</b>	\$80 (t), based on receiving print-ready electronic file.
<b>Change up to 3 images</b>	\$120 (t) set-up to change up to three images on a standard set.
<b>Create Your Own Image Set</b>	\$250 (t) to select 12 images from our image library, includes custom cover (if art provided), standard cover, or one of the optional cover choices on pg. 15.
<b>Logo Modification/Typesetting fee for non print-ready art</b>	\$30 (t)
<b>Sort</b>	The calendars are boxed in random order. Sorting in spreadsheet order adds \$.20 (t) per calendar.
<b>Domestic Split-ship</b>	\$6 (t) per address plus \$.20 (t) per unit to sort by location. Applies on most orders. For larger quantities please call.
<b>International Split-ship</b>	\$10 (t) per address plus an additional \$.20 (t) per unit to sort by location. Applies on most orders. For larger quantities please call.
<b>Additional Tabs on Excel Spreadsheet</b>	\$20 (t)
<b>Labels</b>	\$.15 (t) per label, plus \$20 (t) label file set-up.
<b>Calendar Insertion &amp; Label Application</b>	\$.72 (t)
<b>Direct Mail Fulfillment</b>	The unit cost of the labels (\$.15 (t)), insertion & label application (\$.72 (t)) plus the one time label set-up (\$20 (t)) applies. Mailers and postage are additional and vary per calendar.
<b>Less Than Minimum</b>	For items with a published minimum of 100, the absolute minimum is 50 with a 15% up charge to the 100 column price.





## PROPER EXCEL SPREADSHEET FORMATTING

A	B	C	D	E	F	G	H	I	J
Record #	First_Name	Last_Name	Company_Name	Address_1	Address_2	City	State	Zip	Birthday Month #
01	John	Doe	Acme Co.	789 Center St.	Suite 2	Memphis	TN	38017	9

\* ONLY ONE NAME PER CELL. First\_Name and Last\_Name field can have up to 13 characters each, 24 combined. Only the First\_Name column is required. Last\_Name column can be left blank if you don't want last names on the calendars. The remaining columns can have no data unless full mail preparation was requested. The birthday column is also not required unless the birthday option is requested. The "Address\_1" field should ONLY include the street number and address. The "Address\_2" field should ONLY be used for addresses that have a Suite #, Apartment #, etc., and should NOT be included as part of the "Address\_1" field. Please refrain from using any type of symbols/signs ex. , - , & , 'etc., and name combinations as we cannot guarantee them on most image sets except sets that accept first & last names on all images. Double check your spreadsheet before submission for any spelling errors or unnecessary spaces. Once submitted, we will use it exactly AS IS to generate your calendar order. If you have any questions please contact your sales representative before submitting something that deviates from the format above to be sure it will be usable. ONLY ONE EXCEL FILE WITH ONE TAB PER ORDER. \*MORE THAN ONE TAB OR DATA FILE PER ORDER WILL INCUR ADDITIONAL FEES.

### OOPS, MISSED A FEW NAMES OR HAD SPELLING ERRORS?

We offer a one (1) time re-order for a 12 quantity minimum at the same unit price as the original order on all name personalized calendar orders.

*\*One time re-orders are an EXACT repeat of the original order with a new list of names. Changes to the calendar features cannot be made. No proof will be sent.*

### CALENDAR PRICE INCLUDES

- One calendar style
- One standard image set (see pg.10-13)
- One full color logo imprint on every month and cover (supplied print ready)
- Start any month & run for 12 months.
- One full year PDF proof  
*(Additional proofs will incur a \$40 (t) fee)*
- One excel spreadsheet with one tab per order, shipping to one location
- Standard layout design and cover

### PRODUCTION PROCESS

- We will e-mail an order acknowledgment within 48 hours after the order is received and reviewed.
- We send one virtual multi-page PDF at no cost to you of 12 months plus cover within 3-5 business days – includes one recipient's name and your logo, assuming we have all necessary files from you.  
*(Artwork alterations required after initial free proof has been sent will incur a \$40 (t) alteration fee to produce a new proof).*
- Print production is 5-8 business days after virtual proof approval and is increased during the months of Oct. - Dec. Call for current lead times.

### OTHER COVER OPTIONS

For an additional \$20 (t) set-up you can pick from one of the cover designs below. For an \$80 (t) set-up you can supply your own print-ready custom cover design for any of the name personalized calendar styles.

*\*All calendar items vary in size, as a result the arrangement of items may differ from what's shown below but the company's logo and recipient's name will always be printed.*



Holiday Blackboard



Kraft Envelope



Holiday Hot Chocolate



Macaron Notebook



Plant Whiteboard



Holiday Berry

### WANT TO SWAP UP TO 3 IMAGES ON A STANDARD SET?

For an \$120 (t) set-up you can swap up to 3 images.

### CREATE YOUR OWN IMAGE SET.

For a \$250 (t) set-up you can pick your own images from our full image gallery of over 400 images to choose from.

### PERSONALIZE EVEN MORE WITH A BIRTHDAY CAKE ON THE RECIPIENT'S BIRTHDAY MONTH!

For an additional \$.30 (r) per calendar you can have the standard image replaced with a personalized birthday image on the recipient's birthday month. Any quantity.



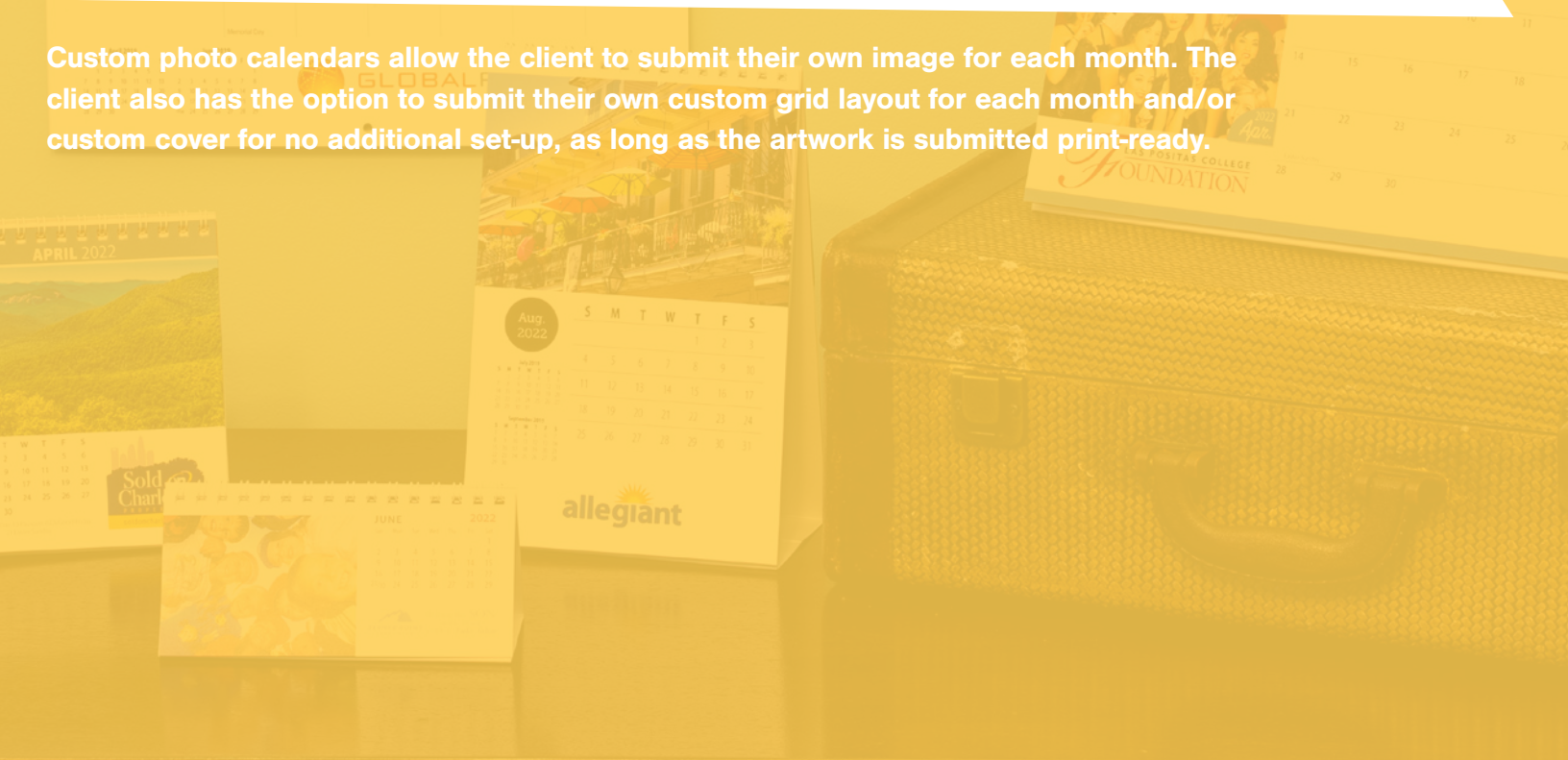
\*Only first name written on image

**MORE OPTIONS AVAILABLE ON OUR WEBSITE!**



# CUSTOM PHOTO CALENDARS

Custom photo calendars allow the client to submit their own image for each month. The client also has the option to submit their own custom grid layout for each month and/or custom cover for no additional set-up, as long as the artwork is submitted print-ready.





Accent colors change from month to month

## MC-450 CD Case Calendar

<b>Final Size</b>	4 5/8" x 5 7/8"
<b>Imprint Area</b>	1 3/4" x 1 1/2", full color
<b>Picture Area</b>	4 5/8" x 2 3/4"
<b>Paper Stock</b>	80 lb. coated cover
<b>Set-up</b>	\$100 (t)

### Product Description

12 loose monthly sheets plus a cover with your own custom picture every month. The sheets are inserted into a clear CD jewel case that works as the calendar stand when the lid is flipped back to a 45° angle. Each page comes with a full color imprint and U.S. or Canadian holidays.

Qty	100	250	500	1000	2500
<b>Price</b> <small>1 sided print</small>	3.70	3.45	3.30	3.15	3.00

R



### Additional Options

<b>Grid Color Change</b>	\$70 (t)
<b>Custom Layout</b>	\$100 (t) with print-ready art
<b>Additional Months</b>	add 7% per month
<b>Envelopes</b>	corrugated box \$.90 (t)
<b>Physical Proof</b>	\$30 (t). PDF proof no charge

## MA-450 Acrylic Calendar

<b>Final Size</b>	4 5/8" x 5 7/8"
<b>Imprint Area</b>	1 3/4" x 1 1/2", full color
<b>Picture Area</b>	4 5/8" x 2 3/4"
<b>Paper Stock</b>	100 lb. uncoated cover
<b>Finishing</b>	individually shrink-wrapped
<b>Set-up</b>	\$100 (t)

### Product Description

12 loose monthly sheets plus a cover with your own custom picture every month. The loose sheets lay flat against the assembled stand. Each page comes with a full color imprint and U.S. or Canadian holidays. The calendar is individually shrink-wrapped.

Qty	100	250	500	1000	2500
<b>Price</b> <small>1 sided print</small>	9.00	8.60	8.30	7.90	7.50

R



### Additional Options

<b>Grid Color Change</b>	\$70 (t)
<b>Custom Layout</b>	\$100 (t) with print-ready art
<b>Additional Months</b>	add 7% per month
<b>Physical Proof</b>	\$30 (t). PDF proof no charge

## MF-250 Tent-Style Calendar

<b>Final Size</b>	5 1/2" x 2 5/8"
<b>Imprint Area</b>	2" x 3/4", full color
<b>Picture Area</b>	3 1/8" x 2 1/4"
<b>Paper Stock</b>	100 lb. coated text
<b>Binding</b>	white (default) or black metal twin-loop
<b>Set-up</b>	\$100 (t)

### Product Description

Mini tent-style calendar with your own custom picture every month and full color imprint.

Qty	100	250	500	1000
<b>Price</b> <small>1 sided print</small>	3.40	3.10	2.90	2.75

R



### Additional Options

<b>Back Print</b>	black \$.30 (r), color \$.40 (r)
<b>Custom Layout</b>	\$100 (t) with print-ready art
<b>Additional Months</b>	add 7% per month
<b>Envelopes</b>	bubble env. \$.60 (t)
<b>Physical Proof</b>	\$30 (t). PDF proof no charge

## MF-450 Tent-Style Calendar

<b>Final Size</b>	4 3/4" x 5 1/4"
<b>Imprint Area</b>	1 3/4" x 1 1/2", full color
<b>Picture Area</b>	4 3/4" x 2 3/4"
<b>Paper Stock</b>	100 lb. coated text
<b>Binding</b>	white (default) or black metal twin-loop
<b>Set-up</b>	\$100 (t)

### Product Description

Tent-style calendar with your own custom picture every month and **full color imprint**. Features U.S. or Canadian holidays.

<b>Qty</b>   100 250 500 1000
<b>Price</b> <small>1 sided print</small>   3.80 3.60 3.30 3.10

**R**

Accent colors change from month to month



### Additional Options

<b>Back Print</b>	black \$.30 (r), color \$.60 (r)
<b>Grid Color Change</b>	\$70 (t)
<b>Custom Layout</b>	\$100 (t) with print-ready art
<b>Additional Months</b>	add 7% per month
<b>Envelopes</b>	bubble env. \$.60 (t)
<b>Physical Proof</b>	\$30 (t). PDF proof no charge

## MF-550 Tent-Style Calendar

<b>Final Size</b>	5 1/2" x 5 1/2"
<b>Imprint Area</b>	2" x 1 1/4", full color
<b>Picture Area</b>	4 1/2" x 2 7/8"
<b>Paper Stock</b>	100 lb. coated text
<b>Binding</b>	black (default) or white metal twin-loop
<b>Set-up</b>	\$100 (t)

### Product Description

Square tent-style calendar with your own custom picture every month and **full color imprint**. Calendar prints two-sided on a black background and is attached with black metal twin-loop binding to a black tent-style stand.

<b>Qty</b>   100 250 500 1000
<b>Price</b> <small>2 sided print</small>   4.60 4.30 3.90 3.70

**R**

Background color can be changed for \$90 (t) set-up



### Additional Options

<b>Background Color Change</b>	\$90 (t)
<b>Custom Layout</b>	\$100 (t) with print-ready art
<b>Additional Months</b>	add 7% per month
<b>Envelopes</b>	bubble env. \$.60 (t)
<b>Physical Proof</b>	\$30 (t). PDF proof no charge

## MF-750 Tent-Style Calendar

<b>Final Size</b>	5 1/4" x 8"
<b>Imprint Area</b>	4 1/2" x 3/4", full color
<b>Picture Area</b>	5 1/4" x 3 1/2"
<b>Paper Stock</b>	100 lb. coated text
<b>Binding</b>	white (default) or black metal twin-loop
<b>Set-up</b>	\$100 (t)

### Product Description

Vertical, tent-style calendar with your own custom picture every month and **full color imprint**. Features previous and next month previews and U.S. or Canadian holidays.

<b>Qty</b>   100 250 500 1000
<b>Price</b> <small>1 sided print</small>   5.25 5.00 4.80 4.60

**R**



### Additional Options

<b>Back Print</b>	black \$.40 (r), color \$.70 (r)
<b>Grid Color Change</b>	\$70 (t)
<b>Custom Layout</b>	\$100 (t) with print-ready art
<b>Additional Months</b>	add 7% per month
<b>Envelopes</b>	bubble env. \$.80 (t)
<b>Physical Proof</b>	\$30 (t). PDF proof no charge



## MF-850 Tent-Style Calendar

<b>Final Size</b>	8 1/2" x 5 1/2"
<b>Imprint Area</b>	3" x 1 1/8", full color
<b>Picture Area</b>	3 7/8" x 3 5/8"
<b>Paper Stock</b>	100 lb. coated text
<b>Binding</b>	white (default) or black metal twin-loop
<b>Set-up</b>	\$100 (t)

### Product Description

Horizontal, tent-style calendar with your own custom picture alternating sides each month and a full color imprint. Features previous and next month previews and U.S. or Canadian holidays.

<b>Qty</b>   100 250 500 1000
<b>Price</b> <small>1 sided print</small>   4.95 4.70 4.50 4.30

R



Accent colors change from month to month



### Additional Options

<b>Back Print</b>	black \$.40 (r), color \$.70 (r)
<b>Grid Color Change</b>	\$70 (t)
<b>Custom Layout</b>	\$100 (t) with print-ready art
<b>Additional Months</b>	add 7% per month
<b>Envelopes</b>	bubble env. \$.90 (t)
<b>Physical Proof</b>	\$30 (t). PDF proof no charge

## MF-880 Tent-Style Calendar

<b>Final Size</b>	8 1/2" x 4 1/2"
<b>Imprint Area</b>	2" x 3/4", full color
<b>Picture Area</b>	2 3/4" x 1 3/8" (front) 8 1/2" x 4 1/2" (back)
<b>Paper Stock</b>	100 lb. coated text
<b>Binding</b>	white (default) or black metal twin-loop
<b>Set-up</b>	\$100 (t)

### Product Description

This desk calendar features three months at-a-glance with week numbers. Your own custom picture is printed every month, front and back and a full color imprint.

<b>Qty</b>   100 250 500 1000
<b>Price</b> <small>2 sided print</small>   5.45 5.20 5.00 4.80

R

\*See note for "Calendars with week numbers" under the General Information section, page 39.



### Additional Options

<b>Week No. Change</b>	\$70 (t)
<b>Week Start Change</b>	\$200 (t)
<b>Grid Color Change</b>	\$70 (t)
<b>Custom Layout</b>	\$100 (t) with print-ready art
<b>Additional Months</b>	add 7% per month
<b>Envelopes</b>	bubble env. \$.90 (t)
<b>Physical Proof</b>	\$30 (t). PDF proof no charge

## MF-950 Tent-Style Calendar

<b>Final Size</b>	8 1/2" x 5 1/2"
<b>Imprint Area</b>	3" x 1 1/8", full color
<b>Picture Area</b>	3 7/8" x 3 5/8"
<b>Paper Stock</b>	100 lb. coated text
<b>Binding</b>	white (default) or black metal twin-loop
<b>Set-up</b>	\$100 (t)

### Product Description

Same design as our MF-850 for the cover and the front side of the calendar but with a full month printed on the back.

<b>Qty</b>   100 250 500 1000
<b>Price</b> <small>2 sided print</small>   5.45 5.20 5.00 4.80

R

Accent colors change from month to month



### Additional Options

<b>Grid Color Change</b>	\$70 (t)
<b>Custom Layout</b>	\$100 (t) with print-ready art
<b>Additional Months</b>	add 7% per month
<b>Envelopes</b>	bubble env. \$.90 (t)
<b>Physical Proof</b>	\$30 (t). PDF proof no charge



## WA-801 Wall Calendar

<b>Final Size</b>	11" x 17" (open) 11" x 8 1/2" (closed)
<b>Imprint Area</b>	6 1/4" x 1 1/4", full color
<b>Picture Area</b>	11" x 8 1/2"
<b>Paper Stock</b>	80 lb. coated cover
<b>Binding</b>	white (default) or black metal twin-loop
<b>Set-up</b>	\$90 (t)

### Product Description

Large size, middle twin-loop bound wall calendar (11"x17" open) with your own custom picture every month. Features a **full color imprint** on every sheet, previous and next month previews, and U.S. or Canadian holidays.

### Additional Options

<b>Date Block</b>	\$3 (t) per block,
<b>Text Insertion</b>	\$30 (t) minimum
<b>Grid Color Change</b>	\$70 (t)
<b>Custom Layout</b>	\$100 (t) with print-ready art
<b>Additional Months</b>	add 7% per month
<b>Envelopes</b>	bubble env. \$1.00 (t)
<b>Physical Proof</b>	\$30 (t). PDF proof no charge

<b>Qty  </b>	<b>100</b>	<b>250</b>	<b>500</b>	<b>1000</b>
<b>Price  </b>	8.25	7.75	7.00	6.50

R



## WC-821 Wall Calendar

<b>Final Size</b>	8 1/2" x 11" (open) 8 1/2" x 5 1/2" (closed)
<b>Imprint Area</b>	4 1/4" x 3/4", full color
<b>Picture Area</b>	8 1/2" x 5 1/2"
<b>Paper Stock</b>	80 lb. coated cover
<b>Binding</b>	white (default) or black metal twin-loop
<b>Set-up</b>	\$90 (t)

### Product Description

Mini size, middle twin-loop bound wall calendar (8 1/2" x 11" open) with your own custom picture every month. Features a **full color imprint** on every sheet, previous and next month previews, and U.S. or Canadian holidays.

### Additional Options

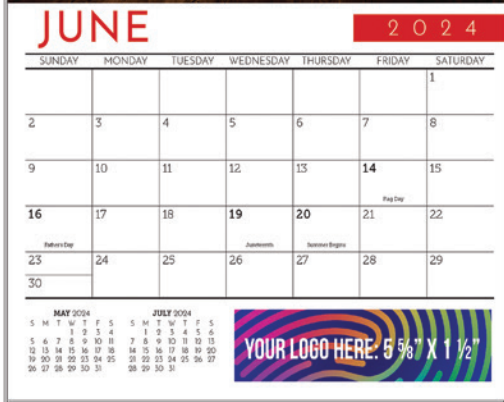
<b>Date Block</b>	\$3 (t) per block,
<b>Text Insertion</b>	\$30 (t) minimum
<b>Grid Color Change</b>	\$70 (t)
<b>Custom Layout</b>	\$100 (t) with print-ready art
<b>Additional Months</b>	add 7% per month
<b>Envelopes</b>	bubble env. \$.80 (t)
<b>Physical Proof</b>	\$30 (t). PDF proof no charge

**\*Smaller than the traditional size but great for tight spaces and more economical!**

<b>Qty  </b>	<b>100</b>	<b>250</b>	<b>500</b>	<b>1000</b>
<b>Price  </b>	4.75	4.50	4.30	4.00

R





## WA-801T Wall Calendar

<b>Final Size</b>	11" x 17"
<b>Imprint Area</b>	5 5/8" x 1 1/2", full color
<b>Picture Area</b>	11" x 8 3/4"
<b>Paper Stock</b>	80 lb. coated cover
<b>Binding</b>	white (default) or black metal twin-loop
<b>Set-up</b>	\$90 (t)

### Product Description

Large size, top bound wall calendar with your own custom picture every month. Features a **full color imprint** on every sheet, previous and next month previews, and U.S. or Canadian holidays. Metal hanger is attached to top for hanging.

### Additional Options

<b>Date Block</b>	\$3 (t) per block, \$30 (t) minimum
<b>Text Insertion</b>	
<b>Grid Color Change</b>	\$70 (t)
<b>Custom Layout</b>	\$100 (t) with print-ready art
<b>Additional Months</b>	add 7% per month
<b>Envelopes</b>	stay-flat \$1.50 (t)
<b>Physical Proof</b>	\$30 (t). PDF proof no charge

Qty | 100 250 500 1000

Price | 10.50 9.60 8.70 8.20

R



## CUSTOM PHOTO CALENDAR ORDER PROCESS

02

### CHOOSE A START MONTH AND CALENDAR DURATION.

Standard pricing includes starting any month and running for 12 consecutive months. Additional months and/or insert sheets add 7% to the unit price.

04

### PREPARE YOUR ARTWORK

#### Factory Stock Layout

For flat pictures we recommend sending 300 dpi or higher JPG files for each month at actual size. We will place each picture in the allotted image area and crop accordingly. For artwork with a mixture of pictures and overlaid text, we recommend downloading the template package from our website to lay out the picture area artwork. Submit high-resolution, print-ready PDFs with all text converted to outlines for each month. Include 1/8" bleed area all around but no crop/bleed/printer marks and all template items removed.

For the logo imprint area, we recommend vector art in PDF or EPS format with all fonts converted to outlines and sized to fit the imprint area of the chosen calendar style.

06

### SUBMIT PO & ARTWORK

For file size less than 10MB, please e-mail a ZIP of all art files and PO to orders@bkpress.com and copy the art department at art@bkpress.com

For file size larger than 10MB, please email only your PO to orders@bkpress.com and submit your artwork via the artwork upload tool found on our website.

01

### SELECT YOUR CALENDAR STYLE

03

### STOCK OR CUSTOM?

You can choose to use our stock template layout (as pictured in our catalog and website) or fully design your own custom calendar.

04

### PREPARE YOUR ARTWORK

#### Customer Fully Custom Art

Download the template package from our website and use the PDF template labeled "...ALLCUSTOM.pdf". You can layout any elements (pictures, date grids, text, logos, etc.) on the page to your preference. Supply a print-ready, multi-page PDF or individual PDF files for each month and cover. Don't forget to remove template elements and make sure the final file(s) includes the bleed area but no crop/bleed/printer marks as part of the file. Alternatively, you can choose to send us an InDesign packaged file of your full layout.

05

### LABEL AND ZIP ARTWORK

If sending an individual JPG or PDF for each month and cover separately, please label each picture after the month it is to go in. For example, 01\_January.jpg/pdf for January, 02\_February.jpg/pdf for February, 00\_Cover.jpg/pdf for the cover and so on. For a multi-page, print-ready PDF all pages should be sent in order. ZIP your files to prepare for art submission.



## WP-201S Single Photo Wall Calendar

<b>Final Size</b>	11" x 17"
<b>Picture Area</b>	11" x 8 1/2", full color
<b>Paper Stock</b>	Top Panel: 10 pt C1S Calendar Grids: 50 lb offset
<b>Binding</b>	stapled
<b>Set-up</b>	\$75 (t) with print-ready art

### Product Description

Single panel wall calendar with your custom full color photo/artwork and a 12 month, grayscale tear-off calendar pad. Calendar can begin any month and run for 12 months. Features U.S. or Canadian holidays, a small calendar preview of the previous and next month and a notes area.

### Additional Options

<b>Date Block Text Insertion</b>	\$3 (t) per block, \$30 (t) minimum, plus \$.20 (r) run-charge
<b>Custom Date Grids</b>	\$100 (t) with print-ready art (grayscale), plus \$.20 (r) run-charge.
<b>Additional Months</b>	add 5% per month.
<b>Envelopes</b>	stay-flat \$1.50 (t)
<b>Physical Proof</b>	\$30 (t). PDF proof no charge
<b>Metal Twin-loop Binding</b>	add \$.50 (r)



<b>Qty</b>	<b>100</b>	<b>250</b>	<b>500</b>	<b>1000</b>
<b>Price</b>	<b>3.00</b>	<b>2.80</b>	<b>2.60</b>	<b>2.50</b>

R

## WP-250 Single Photo Wall Calendar

<b>Final Size</b>	11" x 25 1/2" (open) 11" x 17" (closed)
<b>Picture Area</b>	11" x 8 1/2", full color
<b>Paper Stock</b>	Top Panel: 10 pt C1S Calendar Grids: 50 lb offset
<b>Binding</b>	white (default) or black metal twin-loop
<b>Set-up</b>	\$75 (t) with print-ready art

### Product Description

Three month at-a-glance wall calendar with your custom full color photo/artwork on top panel and grayscale tear-off calendar pad. Calendar can begin any month and run for 12 months. Features U.S. or Canadian holidays and week numbers.

### Additional Options

<b>Date Block Text Insertion</b>	\$3 (t) per block, \$30 (t) minimum, plus \$.30 (r) run-charge
<b>Week No. Change</b>	\$70 (t) plus \$.30 (r) run-charge
<b>Week Start Change</b>	\$200 (t) plus \$.30 (r) run-charge
<b>Custom Date Grids</b>	\$100 (t) with print-ready art (grayscale), plus \$.30 (r) run-charge
<b>Additional Months</b>	add 5% per month plus \$.30 (r) run-charge
<b>Envelopes</b>	stay-flat \$1.50 (t)
<b>Physical Proof</b>	\$30 (t). PDF proof no charge

<b>Qty</b>	<b>100</b>	<b>250</b>	<b>500</b>	<b>1000</b>
<b>Price</b>	<b>4.60</b>	<b>4.40</b>	<b>4.20</b>	<b>4.00</b>



\*See note for "Calendars with week numbers" under the General Information section, page 39.

R

11" or 14"



**OCTOBER 2024**

week	sun	mon	tue	wed	thu	fri	sat
40			1	2	3	4	5
41	6	7	8	9	10	11	12
42	13	14	15	16	17	18	19
43	20	21	22	23	24	25	26
44	27	28	29	30	31		

**NOVEMBER 2024**

week	sun	mon	tue	wed	thu	fri	sat
44						1	2
45	3	4	5	6	7	8	9
46	10	11	12	13	14	15	16
47	17	18	19	20	21	22	23
48	24	25	26	27	28	29	30

**DECEMBER 2024**

week	sun	mon	tue	wed	thu	fri	sat
49	1	2	3	4	5	6	7
50	8	9	10	11	12	13	14
51	15	16	17	18	19	20	21
52	22	23	24	25	26	27	28
1	29	30	31				

31 1/2" or 39 1/2"

## WP-401 Single Photo Wall Calendar

<b>Final Size</b>	11" x 31 1/2" (open), 11" x 8 1/2" (closed)
<b>Picture Area</b>	11" x 8", full color
<b>Paper Stock</b>	Top Panel: 12 pt C1S Calendar Grids: 50 lb offset
<b>Binding</b>	white (default) or black metal twin-loop
<b>Set-up</b>	\$75 (t) with print-ready art

### Product Description

Four panel wall calendar with your custom full color photo/artwork on top panel and grayscale tear-off calendar pads. Calendar can begin any month and run for 12 months. Features 3 full view months, U.S. or Canadian holidays, and week numbers. Metal hanger is attached to top panel for hanging.

### Additional Options

<b>Date Block</b>	\$3 (t) per block, \$30 (t) minimum, plus \$.50 (r) run-charge
<b>Text Insertion</b>	\$100 (t) with print-ready art (grayscale), plus \$.50 (r) run-charge
<b>Custom Date Grids</b>	\$70 (t) plus \$.50 (r) run-charge
<b>Week No. Change</b>	\$200 (t) plus \$.50 (r) run-charge
<b>Week Start Change</b>	\$1.10 (t)
<b>Date Slider</b>	stay-flat \$1.10 (t)
<b>Envelopes</b>	\$30 (t). PDF proof no charge

Qty	100	250	500	1000
<b>Price</b>	9.80	9.40	8.90	8.40

R

## WP-402 Single Photo Wall Calendar

<b>Final Size</b>	14" x 39 1/2" (open), 14" x 10 1/2" (closed)
<b>Picture Area</b>	14" x 10", full color
<b>Paper Stock</b>	Top Panel: 12 pt C1S Calendar Grids: 50 lb offset
<b>Binding</b>	white (default) or black metal twin-loop
<b>Set-up</b>	\$75 (t) with print-ready art

### Product Description

Four panel wall calendar with your custom full color photo/artwork on top panel and grayscale tear-off calendar pads. Calendar can begin any month and run for 12 months. Features 3 full view months, U.S. or Canadian holidays, and week numbers. Metal hanger is attached to top panel for hanging.

### Additional Options

<b>Date Block</b>	\$3 (t) per block, \$30 (t) minimum, plus \$.55 (r) run-charge
<b>Text Insertion</b>	\$100 (t) with print-ready art (grayscale), plus \$.55 (r) run-charge
<b>Custom Date Grids</b>	\$70 (t) plus \$.55 (r) run-charge
<b>Week No. Change</b>	\$200 (t) plus \$.55 (r) run-charge
<b>Week Start Change</b>	\$1.10 (t)
<b>Physical Proof</b>	stay-flat \$1.10 (t)

Qty	100	250	500	1000
<b>Price</b>	13.50	12.50	11.50	11.00

R

\*Our calendars follow the United States calendar rules. Sunday is the first day of week and Saturday is the last day of the week. The first week of the year is the week that contains January 1st, the first day of the year. If you wish to have anything different an artwork set-up will apply along with a run charge.



See page 3 for our new acrylic stand calendar

# STOCK PHOTO CALENDARS

Stock photo calendars allow the client to choose from a Nature, Floral, Seasonal, or Motivational stock image set with one of our select stock photo calendar styles. Each calendar includes a full color imprint on the cover and on each month.



Accent colors change from month to month



## MC-400 CD Case Calendar

<b>Final Size</b>	4 5/8" x 5 7/16"
<b>Imprint Area</b>	1 3/4" x 1 1/2", full color
<b>Paper Stock</b>	80 lb. coated cover
<b>Set-up</b>	\$30 (t) with print-ready art

### Product Description

Calendar is 12 loose monthly sheets plus a cover with your choice of one stock image set. The sheets are inserted into a clear CD jewel case that works as the calendar stand when the lid is flipped back to a 45° angle. Each page comes with a **full color imprint** and U.S. or Canadian holidays.

Qty	100	250	500	1000	2500
<b>Price</b> <small>1 sided print</small>	3.70	3.45	3.30	3.15	3.00

R



## MF-200 Tent-Style Calendar

<b>Final Size</b>	5 1/2" x 2 5/8"
<b>Imprint Area</b>	2" x 3/4", full color
<b>Paper Stock</b>	100 lb. coated text
<b>Binding</b>	white (default) or black metal twin-loop
<b>Set-up</b>	\$30 (t) with print-ready art

### Product Description

Mini tent-style calendar with your choice of one stock image set and **full color imprint** each month.

Qty	100	250	500	1000
<b>Price</b> <small>1 sided print</small>	3.40	3.10	2.90	2.75

R

Accent colors change from month to month



## MF-400 Tent-Style Calendar

<b>Final Size</b>	4 3/4" x 5 1/4"
<b>Imprint Area</b>	1 3/4" x 1 1/2", full color
<b>Paper Stock</b>	100 lb. coated text
<b>Binding</b>	white (default) or black metal twin-loop
<b>Set-up</b>	\$30 (t) with print-ready art

### Product Description

Tent-style calendar with your choice of one stock image set. Features **full color imprint** on every sheet and U.S. or Canadian holidays.

Qty	100	250	500	1000
<b>Price</b> <small>1 sided print</small>	3.80	3.60	3.30	3.10

R

Accent colors change from month to month



## MF-800 Tent-Style Calendar

<b>Final Size</b>	8 1/2" x 5 1/2"
<b>Imprint Area</b>	3" x 1 1/8", full color
<b>Paper Stock</b>	100 lb. coated text
<b>Binding</b>	white (default) or black metal twin-loop
<b>Set-up</b>	\$30 (t) with print-ready art

### Product Description

Tent-style calendar with your choice of one stock image set. Images alternate sides each month. Features previous and next month previews, **full color imprint**, and U.S. or Canadian holidays.

Qty	100	250	500	1000
<b>Price</b> <small>1 sided print</small>	4.95	4.70	4.50	4.30

R



## WA-800 Wall Calendar

<b>Final Size</b>	11" x 17" (open) 11" x 8 1/2" (closed)
<b>Imprint Area</b>	6 1/4" x 1 1/4", full color
<b>Picture Area</b>	11" x 8 1/2"
<b>Paper Stock</b>	80 lb. coated cover
<b>Binding</b>	white (default) or black metal twin-loop
<b>Set-up</b>	\$30 (t) with print-ready art

### Product Description

Large size, middle twin-loop bound wall calendar (11"x17" open) with your choice of one stock image set. Features a **full color imprint** on every sheet, previous and next month previews, and U.S. or Canadian holidays.



<b>Qty  </b>	<b>100</b>	<b>250</b>	<b>500</b>	<b>1000</b>
<b>Price  </b>	8.25	7.75	7.00	6.50

R



## WA-800T Wall Calendar

<b>Final Size</b>	11" x 17"
<b>Imprint Area</b>	5 5/8" x 1 1/2", full color
<b>Picture Area</b>	11" x 8 3/4"
<b>Paper Stock</b>	80 lb. coated cover
<b>Binding</b>	white (default) or black metal twin-loop
<b>Set-up</b>	\$30 (t) with print-ready art

### Product Description

Large size, top bound wall calendar with your choice of one stock image set. Features a **full color imprint** on every sheet, previous and next month previews, and U.S. or Canadian holidays. Metal hanger is attached to the top for hanging.



<b>Qty  </b>	<b>100</b>	<b>250</b>	<b>500</b>	<b>1000</b>
<b>Price  </b>	10.50	9.60	8.70	8.20

R



## WC-820 Wall Calendar

<b>Final Size</b>	8 1/2" x 11" (open) 8 1/2" x 5 1/2" (closed)
<b>Imprint Area</b>	4 1/4" x 3/4", full color
<b>Picture Area</b>	8 1/2" x 5 1/2"
<b>Paper Stock</b>	80 lb. coated cover
<b>Binding</b>	white (default) or black metal twin-loop
<b>Set-up</b>	\$30 (t) with print-ready art

### Product Description

Mini size, middle twin-loop bound wall calendar (8 1/2" x 11" open) with your choice of one stock image set. Features a **full color imprint** on every sheet, previous and next month previews, and U.S. or Canadian holidays.



**\*Smaller than the traditional size but great for tight spaces and more economical!**

<b>Qty  </b>	<b>100</b>	<b>250</b>	<b>500</b>	<b>1000</b>
<b>Price  </b>	4.75	4.50	4.30	4.00

R

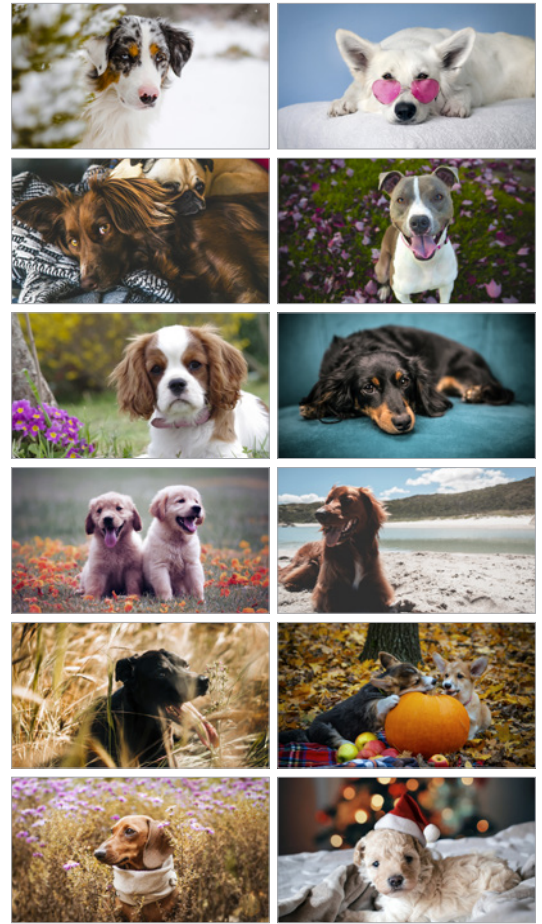




BIRDS



DOGS



SEALIFE



US MONUMENTS

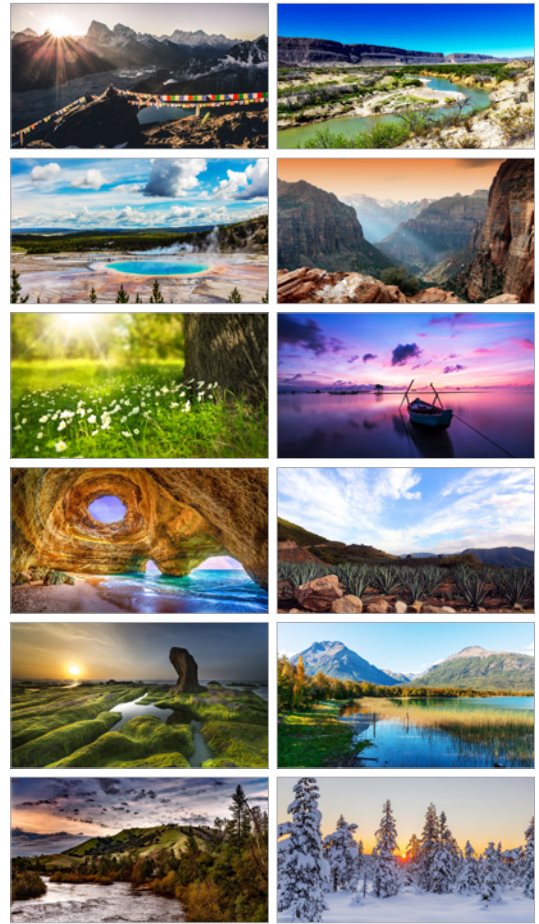




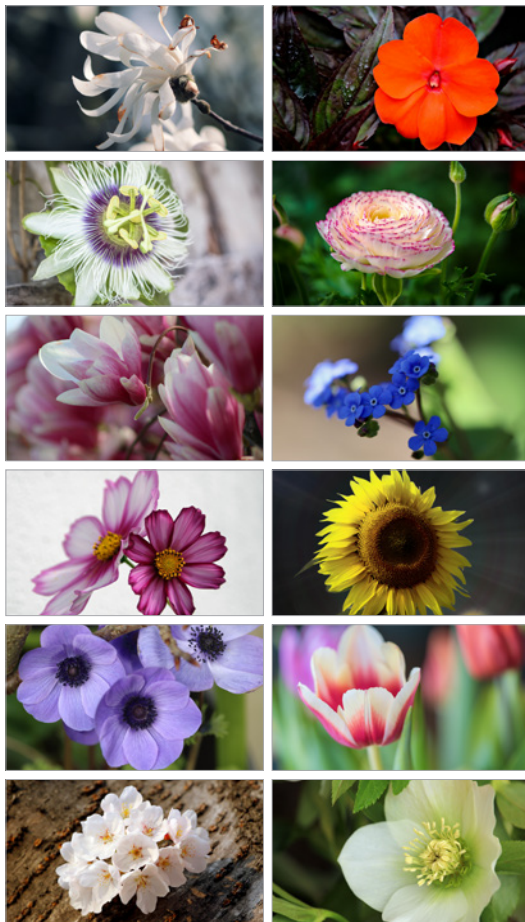
## MOTIVATIONAL



## NATURE



## FLORAL



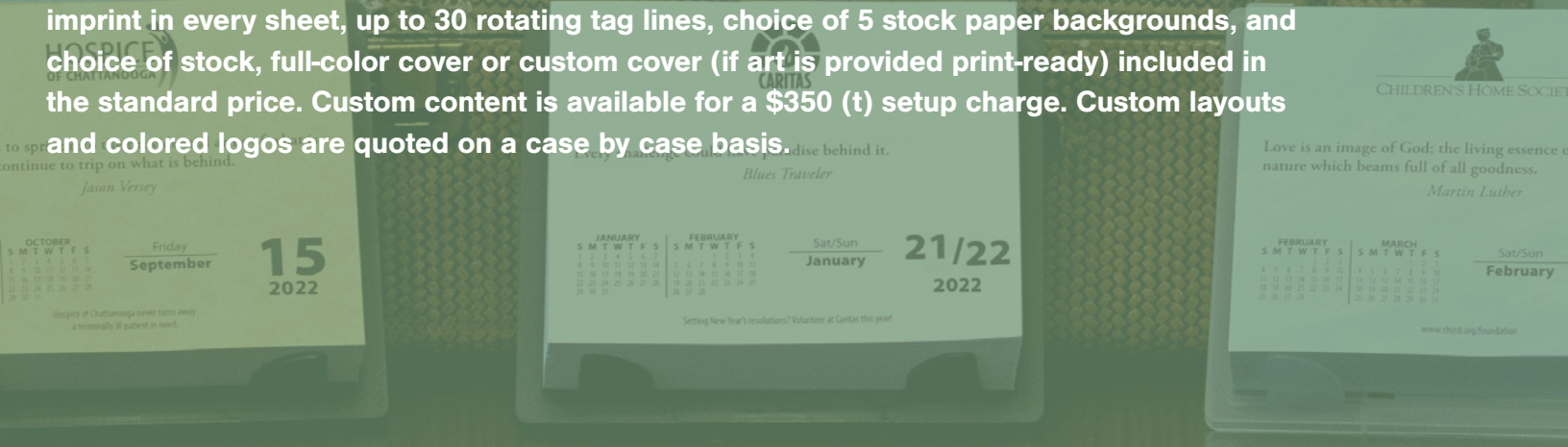
## SEASONAL





# DAILY CALENDARS

The daily-date, tear-off calendar is padded and adhered to a polypropylene stand. A different positive quote for each date in the year is printed in the middle of the calendar. It also includes standard U.S. holidays and the current and next month mini-calendar references. Saturday and Sunday each week are combined for a total page count of 314. Black logo imprint in every sheet, up to 30 rotating tag lines, choice of 5 stock paper backgrounds, and choice of stock, full-color cover or custom cover (if art is provided print-ready) included in the standard price. Custom content is available for a \$350 (t) setup charge. Custom layouts and colored logos are quoted on a case by case basis.



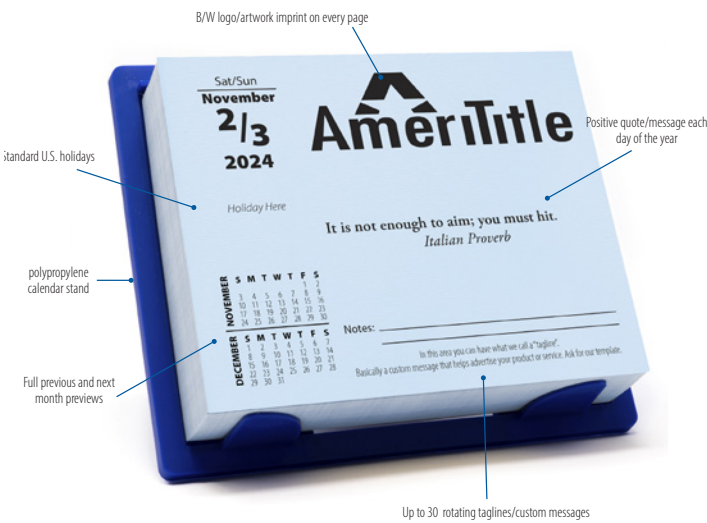
# CALENDAR STYLES

## DT-201 Daily Calendar



Logo Imprint Area: 4 3/4" x 7/8"

## DT-203 Daily Calendar



Logo Imprint Area: 3 1/4" x 1"

## DT-207 Daily Calendar



Logo Imprint Area: 3 1/4" x 1 1/8"

### Description

The daily-date, tear-off calendar is padded and adhered to your choice of color polypropylene stand. A different positive quote for each date in the year is printed in the middle of the calendar. It also includes standard U.S. holidays and the current and next month mini-calendar references. Saturday and Sunday each week are combined for a total page count of 314. Black logo imprint in every sheet, up to 30 rotating tag lines, choice of 5 stock paper backgrounds, and choice of stock, full-color cover or custom cover (if art is provided print-ready) included in the standard price.

### Specifications

<b>Final Size</b>	5 1/4 x 4 1/4
<b>Imprint Area</b>	varies per style, black imprint
<b>Start Month</b>	start any month and run for 12 months
<b>Paper Stock</b>	50 lb offset
<b>Stand Color</b>	black (default), blue or clear
<b>Standard Set-up</b>	\$40 (t)
<b>Finishing</b>	padded, attached to your choice of stand and individually shrink wrapped
<b>tag lines</b>	up to 30 included at no charge. tag lines over 30: \$3 (t) each
<b>Custom Quotes</b>	\$350 (t). Please download the template from our website
<b>Mailing Boxes</b>	corrugated box \$.70 (t), shipped separately (not inserted)
<b>Packed</b>	36 per box at approx. 32 lbs.
<b>Box Size</b>	16" x 13" x 9"

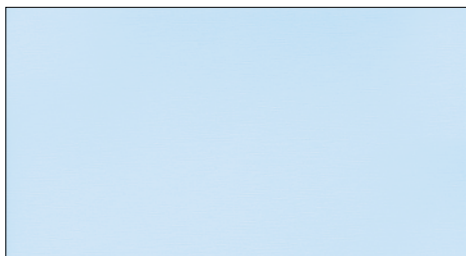
### Additional Options

<b>PMS Color Logo</b>	Please call/e-mail for quote
<b>Full Color Digital</b>	Please call/e-mail for quote
<b>Fully Custom Design</b>	Please call/e-mail for quote

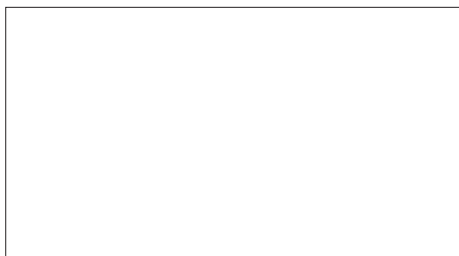
<b>Qty</b>	<b>100</b>	<b>250</b>	<b>500</b>	<b>1000</b>	<b>2500</b>
<b>Price</b>	9.90	9.40	9.00	8.60	8.20



Paper Stock Choices



Blue



White



Clouds



Parchment



Green

Stock Cover Choices

\*A custom cover can be printed at no extra cost if print-ready art is provided.



Blue with Gold Bow



Endless Gratitude



Red with Gold Bow



Happy Holidays

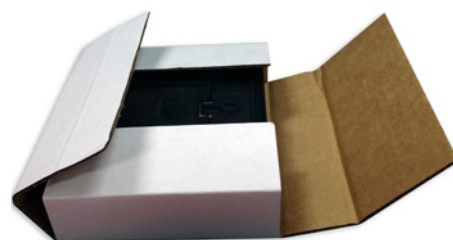


Season's Greetings



Thank You

Boxes



Corrugated Mailing Box  
\$.70 (t) any quantity (not inserted)

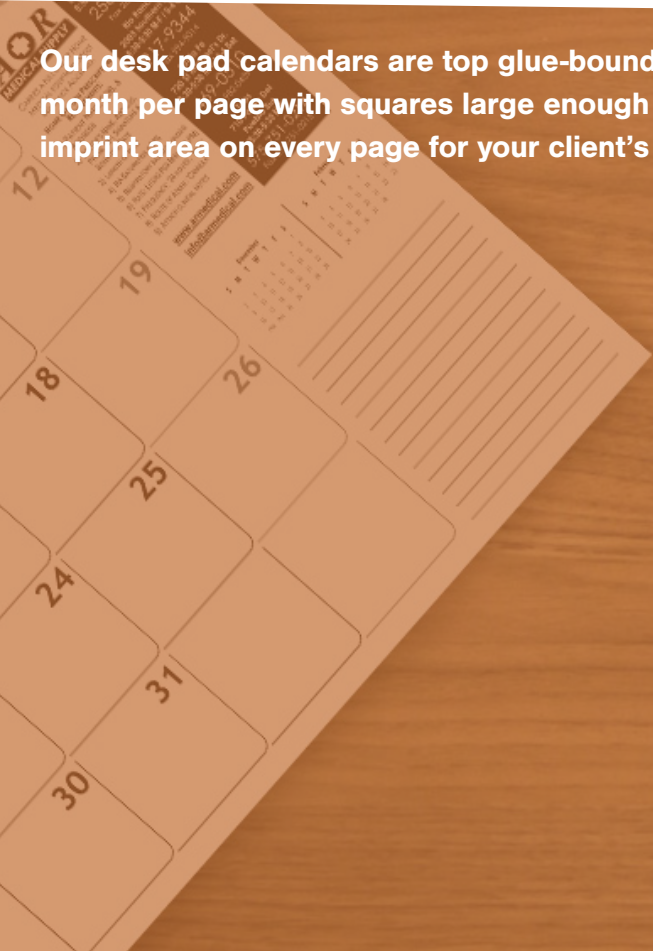


Gold Bow Gift Box  
(calendars inserted)  
\$.80 (t) any quantity



# DESK PAD CALENDARS

Our desk pad calendars are top glue-bound with a chipboard backer. They show an entire month per page with squares large enough to make notes. Each calendar style includes an imprint area on every page for your client's logo.



## DP-301 Desk Pad Calendar

<b>Final Size</b>	17" x 11"
<b>Imprint Area</b>	2 3/4" x 3 3/4", black only
<b>Start Month</b>	start any month and run for 12
<b>Paper Stock</b>	60 lb. offset
<b>Set-up</b>	\$20 (t) with print-ready art

### Additional Options

<b>Date Block Text Insertion</b>	\$3 (t) per block, \$30(t) min.
<b>Custom Calendar</b>	\$60 (t) with print-ready, customer provided artwork.
<b>Additional Months</b>	add 5% per month
<b>Envelopes</b>	stay-flat \$1.50 (t)
<b>Black Corners</b>	\$.70 (t)



### Product Description

12 month, 17" x 11" black imprint desk pad. Features previous and next month previews and U.S. holidays.

<b>Qty  </b>	<b>100</b>	<b>250</b>	<b>500</b>	<b>1000</b>
<b>Price  </b>	2.80	2.60	2.40	2.30

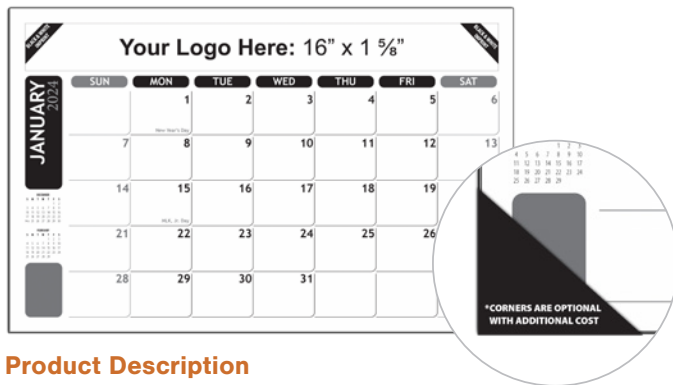
R

## DP-303 Desk Pad Calendar

<b>Final Size</b>	17" x 11"
<b>Imprint Area</b>	16" x 1 5/8", black only
<b>Start Month</b>	start any month and run for 12
<b>Paper Stock</b>	60 lb. offset
<b>Set-up</b>	\$20 (t) with print-ready art

### Additional Options

<b>Date Block Text Insertion</b>	\$3 (t) per block, \$30(t) min.
<b>Custom Calendar</b>	\$60 (t) with print-ready, customer provided artwork.
<b>Additional Months</b>	add 5% per month
<b>Envelopes</b>	stay-flat \$1.50 (t)
<b>Black Corners</b>	\$.70 (t)



### Product Description

12 month, 17" x 11" black imprint desk pad. Features previous and next month previews and U.S. holidays.

<b>Qty  </b>	<b>100</b>	<b>250</b>	<b>500</b>	<b>1000</b>
<b>Price  </b>	2.80	2.60	2.40	2.30

R

## DP-305 Desk Pad Calendar

<b>Final Size</b>	17" x 11"
<b>Imprint Area</b>	16" x 1 5/8", black only
<b>Start Month</b>	start any month and run for 12
<b>Paper Stock</b>	60 lb. offset
<b>Set-up</b>	\$20 (t) with print-ready art

### Additional Options

<b>Date Block Text Insertion</b>	\$3 (t) per block, \$30(t) min.
<b>Custom Calendar</b>	\$60 (t) with print-ready, customer provided artwork.
<b>Additional Months</b>	add 5% per month
<b>Envelopes</b>	stay-flat \$1.50 (t)
<b>Black Corners</b>	\$.70 (t)



### Product Description

12 month, 17" x 11" black imprint desk pad. Features a full year at-a-glance calendar on bottom and U.S. holidays.

<b>Qty  </b>	<b>100</b>	<b>250</b>	<b>500</b>	<b>1000</b>
<b>Price  </b>	2.80	2.60	2.40	2.30

R



# FULL COLOR DESK PAD - 17"X12"

## DP-202 Desk Pad Calendar

<b>Final Size</b>	17" x 12"
<b>Imprint Area</b>	16" x 2", full color
<b>Start Month</b>	start any month and run for 12
<b>Paper Stock</b>	70 lb. offset
<b>Set-up</b>	\$20 (t) with print-ready art

### Additional Options

<b>Date Block Text Insertion</b>	\$3 (t) per block, \$30(t) min.
<b>Custom Calendar</b>	\$60 (t) with full, print-ready, customer provided artwork.
<b>Additional Months</b>	add 5% per month
<b>Envelopes</b>	stay-flat \$1.50 (t)
<b>Grid Color Change</b>	\$70 (t)
<b>Black Corners</b>	Included, deduct \$.70 (t) for no corners



### Product Description

12 month, 17" x 12" full color imprint desk pad. Top glue-bound with a chipboard backer. Features previous and next month previews, black corners, and U.S. holidays.

<b>Qty  </b>	<b>100</b>	<b>250</b>	<b>500</b>	<b>1000</b>
<b>Price  </b>	6.40	5.90	5.40	5.10

R

## DP-205 Desk Pad Calendar

<b>Final Size</b>	17" x 12"
<b>Imprint Area</b>	16" x 2 1/2", full color
<b>Start Month</b>	start any month and run for 12
<b>Paper Stock</b>	70 lb. offset
<b>Set-up</b>	\$20 (t) with print-ready art

### Additional Options

<b>Date Block Text Insertion</b>	\$3 (t) per block, \$30(t) min.
<b>Custom Calendar</b>	\$60 (t) with full, print-ready, customer provided artwork.
<b>Additional Months</b>	add 5% per month
<b>Envelopes</b>	stay-flat \$1.50 (t)
<b>Grid Color Change</b>	\$70 (t)
<b>Black Corners</b>	Included, deduct \$.70 (t) for no corners



### Product Description

12 month, 17" x 12" full color imprint desk pad. Top glue-bound with a chipboard backer. Features a full year-at-a-glance on the bottom, black corners, and U.S. holidays.

<b>Qty  </b>	<b>100</b>	<b>250</b>	<b>500</b>	<b>1000</b>
<b>Price  </b>	6.40	5.90	5.40	5.10

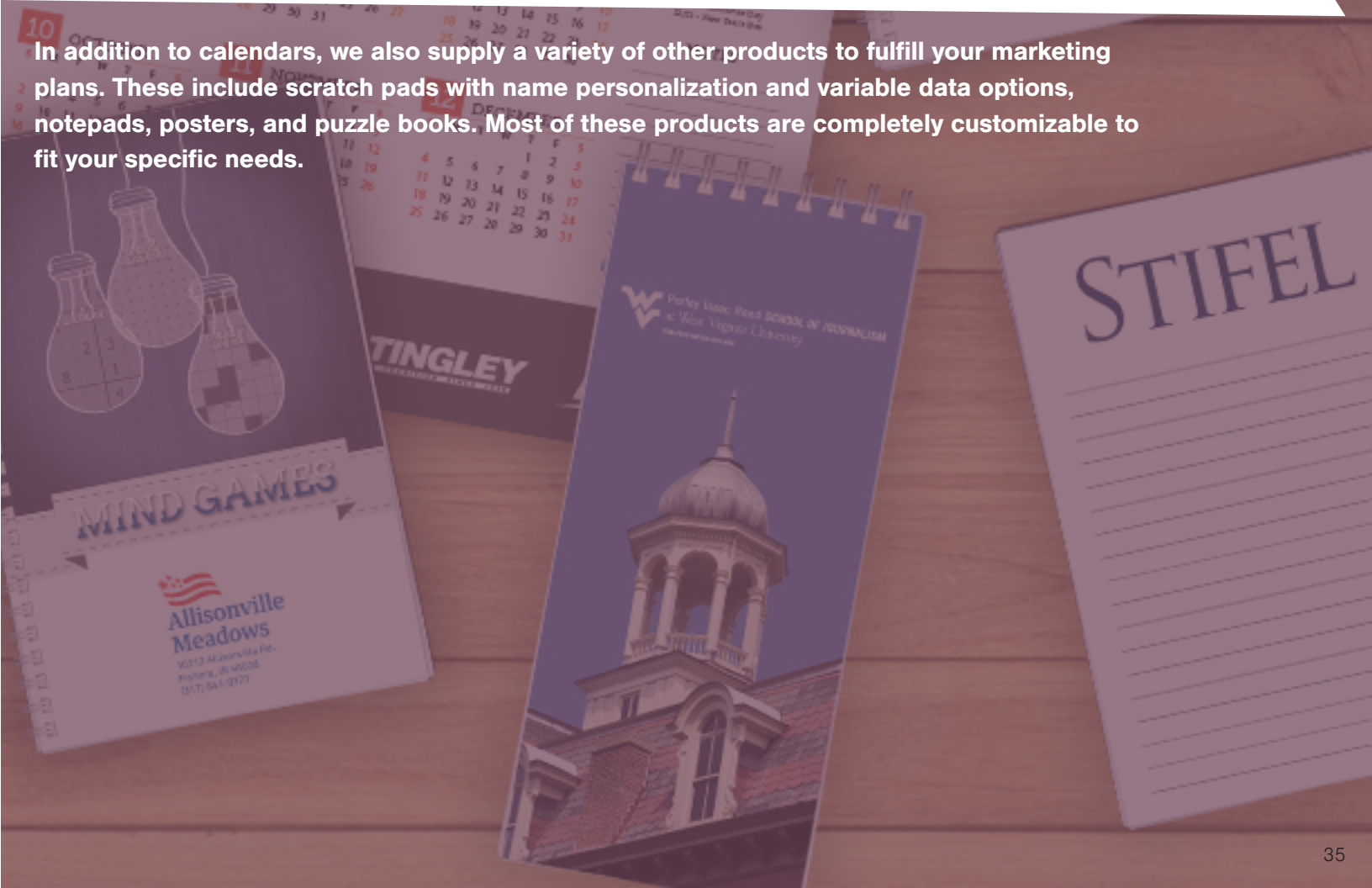
R





# MISCELLANEOUS

In addition to calendars, we also supply a variety of other products to fulfill your marketing plans. These include scratch pads with name personalization and variable data options, notepads, posters, and puzzle books. Most of these products are completely customizable to fit your specific needs.



## Black Scratch Pads

Black and White Imprint | Print-ready artwork required

### Product Description

Digitally printed scratch pads with 30 sheets. Up to 10 changing tag lines included with standard set-up.

*\*No bleed allowed unless quoted.*

### Specifications

<b>Method of Imprint</b>	digital on most orders
<b>Binding</b>	glued on short side with 22 pt. chipboard backing
<b>Physical Proof</b>	\$30 (t). PDF proof no charge
<b>Paper Stock</b>	50 lb. offset
<b>Set-up</b>	\$15 (t) with print-ready artwork
<b>Tag lines</b>	10 included, \$3 (t) per tag line after 10
<b>Sheets per Pad</b>	30 sheets standard.
<b>Upgrade to 50 Sheets per pad</b>	Add 40% to unit price
<b>Name Personalized Pads</b>	\$120 (t) setup, plus 10% run charge. Call for art requirements
<b>Shrink Wrapping</b>	\$.20 (t) per bundle
<b>Different Design on Each Sheet</b>	\$10 (t) per page
<b>Magnets</b>	\$.30 (t) for SP-310, SP-315 and SP-320. \$.40 (t) for SP-330
<b>Bleed</b>	1/4" margin all around. No bleed. Call for a quote on full bleed pads



### WHAT ARE TAGLINES?

Basically short, custom messages that help promote your products or services. Up to 10 (text) changing messages are included in the standard set-up.



Style	Size	Quantity			
		100	250	500	1000
<b>SP-310</b>	3 3/8" x 5 1/2"	1.00	0.90	0.80	0.75
<b>SP-315</b>	4 1/4" x 5 1/2"	1.10	1.00	0.90	0.85
<b>SP-320</b>	3 5/8" x 8 1/2"	1.30	1.20	1.10	1.05
<b>SP-325</b>	4 1/4" x 11"	1.35	1.25	1.20	1.15
<b>SP-330</b>	5 1/2" x 8 1/2"	1.35	1.25	1.20	1.15

R

## Full Color Scratch Pads

Full Color Imprint | Print-ready artwork required

### Product Description

Digitally printed scratch pads with 30 sheets. Up to 10 changing tag lines included with standard set-up.

*\*No bleed allowed unless quoted.*

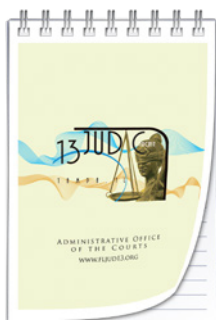
### Specifications

<b>Method of Imprint</b>	digital on most orders
<b>Binding</b>	glued on short side with 22 pt. chipboard backing
<b>Physical Proof</b>	\$30 (t). PDF proof no charge
<b>Paper Stock</b>	60 lb. offset
<b>Set-up</b>	\$15 (t) with print-ready artwork
<b>Tag lines</b>	10 included, \$3 (t) per tag line after 10
<b>Sheets per Pad</b>	30 sheets standard.
<b>Upgrade to 50 Sheets per pad</b>	Add 40% to unit price
<b>Name Personalized Pads</b>	\$120 (t) setup, plus 10% run charge. Call for art requirements
<b>Shrink Wrapping</b>	\$.20 (t) per bundle
<b>Different Design on Each Sheet</b>	\$10 (t) per page
<b>Magnets</b>	\$.30 (t) for SP-210, SP-215 and SP-220. \$.40 (t) for SP-230
<b>Bleed</b>	1/4" margin all around. No bleed. Call for a quote on full bleed pads

Style	Size	Quantity			
		100	250	500	1000
<b>SP-210</b>	3 3/8" x 5 1/2"	1.40	1.30	1.25	1.20
<b>SP-215</b>	4 1/4" x 5 1/2"	1.60	1.45	1.35	1.30
<b>SP-220</b>	3 5/8" x 8 1/2"	2.00	1.80	1.70	1.60
<b>SP-225</b>	4 1/4" x 11"	2.50	2.40	2.30	2.20
<b>SP-230</b>	5 1/2" x 8 1/2"	2.50	2.40	2.30	2.20

R





## NP-400 Notebook

**Size:** 3" x 4 1/4"

*\*Add 10% to unit price for a full bleed imprint*

### Product Description

Our notebooks come with a full color imprint on the front cover, 40 ruled sheets and a chipboard backer. They are bound on the short dimension with white (default) or black metal twin-loop binding.

*\*No bleed allowed unless quoted.*

Qty	100	250	500	1000	2500
<b>Price</b> 1 sided print	1.98	1.88	1.78	1.68	1.60

R



## NP-410 Notebook

**Size:** 3 2/3" x 8 1/2"

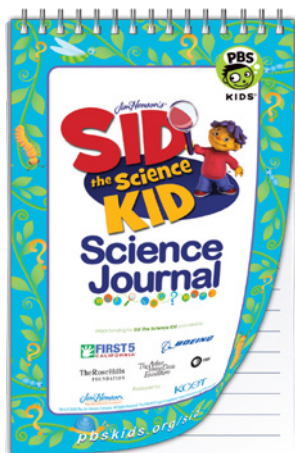
*\*Add 10% to unit price for a full bleed imprint*

### Specifications

<b>Cover Imprint</b>	full color, no bleed is standard
<b>Full Bleed on Front Cover</b>	add 10%
<b>Sheets per Pad</b>	40 ruled sheets per pad
<b>Binding</b>	white (default) or black metal twin-loop
<b>Plastic Coil</b>	add \$.30 (t)
<b>Cover Stock</b>	80 lb coated cover
<b>Inside Sheets Stock</b>	50 lb offset
<b>Custom Print on Inside Sheets</b>	add 10%, black print
<b>Back Cover</b>	add 5%
<b>Set-up</b>	\$30 (t) with print-ready artwork
<b>Physical Proof</b>	\$30 (t). PDF proof no charge.

Qty	100	250	500	1000	2500
<b>Price</b> 1 sided print	2.42	2.20	2.10	1.98	1.90

R



## NP-420 Notebook

**Size:** 5 1/2" x 8 1/2"

*\*Add 10% to unit price for a full bleed imprint*

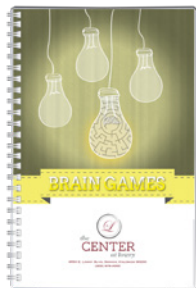
**\*Custom sizes available. E-mail  
info@bkpress.com  
for a custom quote.**

Qty	100	250	500	1000	2500
<b>Price</b> 1 sided print	2.97	2.75	2.42	2.15	2.04

R

Small Print

BG-100



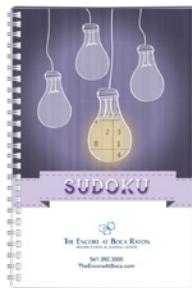
(mazes, cryptograms & word scrambles)

MG-100

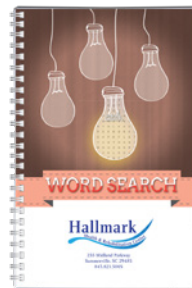


(crossword, word search & sudoku)

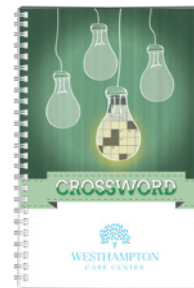
SU-100



WS-100



CW-100



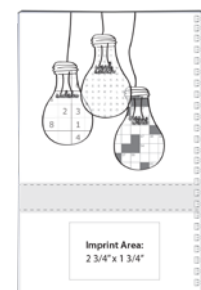
Product Description

Small print (100 series) puzzle books come with 50 puzzles per book with full solution guide on back. Books come with a full color digital imprint on front and back cover.

Qty	100	250	500	1000
Price	2.75	2.59	2.42	2.26

R

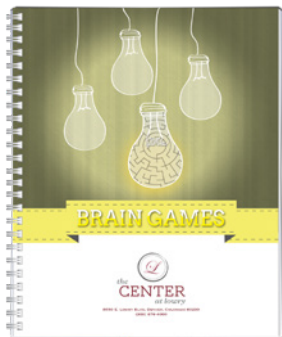
Final Size	5 1/2" x 8 1/2"
Imprint Size	2 3/4" x 1 3/4", full color
Binding	white metal twin-loop
Number of Puzzles	50 per book
Cover Paper Stock	80 lb coated cover
Inside Paper Stock	50 lb offset
Set-up	\$30 (t)
Custom Cover Artwork	\$60 (t) with print-ready artwork provided for front and back covers
Physical Proof	\$30 (t). PDF proof no charge.



Back Cover Sample

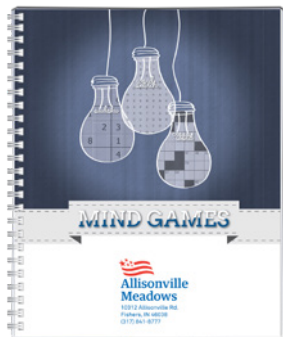
Large Print

BG-200



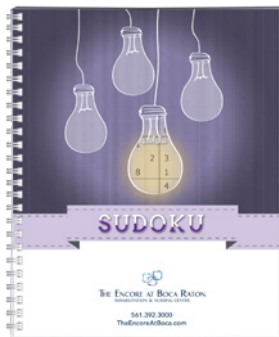
(mazes, cryptograms & word scrambles)

MG-200

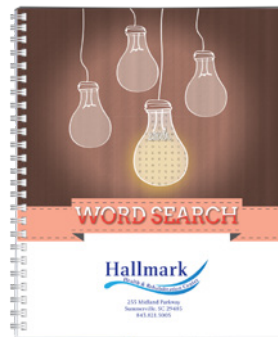


(crossword, word search & sudoku)

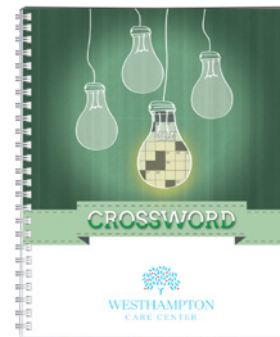
SU-200



WS-200



CW-200



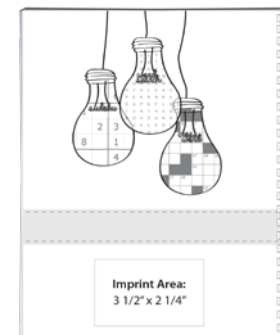
Product Description

Large print (200 series) puzzle books come with 50 puzzles per book with full solution guide on back. Books come with a full color digital imprint on front and back cover.

Qty	100	250	500	1000
Price	4.29	4.02	3.85	3.63

R

Final Size	8 1/2" x 11"
Imprint Size	3 1/2" x 2 1/4", full color
Binding	white metal twin-loop
Number of Puzzles	50 per book
Cover Paper Stock	80 lb coated cover
Inside Paper Stock	50 lb offset
Set-up	\$30 (t)
Custom Cover Artwork	\$60 (t) with print-ready artwork provided for front and back covers
Physical Proof	\$30 (t). PDF proof no charge.



Back Cover Sample



# GENERAL INFORMATION

**Pricing:** Due to fluctuations in material costs, pricing in this catalog may not be current. Please refer to online pricing for current costs.

**Method of Imprinting:** Digital printing. We can approximate PMS colors, but we cannot guarantee exact matches.

**Artwork:** We accept digital print-ready artwork. Faxes, photocopies, business cards, newsprint or art requiring resizing, scanning or editing is NOT print-ready and cannot be accepted. All art files should be aggregated into a single folder and compressed as a .zip file. If the final size of the compressed folder is less than 10 MB, you can submit art via e-mail at art@bkpress.com. For files over 10 MB, please go to our website and click on the artwork upload link to send your files. For art that includes text as part of the design, we recommend vector based art (PDF, EPS) in order to achieve the best results possible (ex. picture with a caption/title overlaid on top). We also recommend vector art for the logo imprint area. Please convert ALL type to outlines or curves as this will avoid any font issues. However, when vector art is not available and you must send rasterized images for logos and text, art should be 900-1200 dpi and should always be sent at 100% or larger of the finished print size. We accept JPG, EPS and PDF. When submitting your own fully custom calendar design, supported programs include Adobe Suite CC or a print ready PDF which includes the bleed area but no print marks. Art that requires additional work to be usable will be billed at \$90 (t) per hour.

**Calendars with week numbers:** Our calendars follow the United States calendar rules. Sunday is the first day of week and Saturday is the last day of the week. The first week of the year is the week that contains January 1st, the first day of the year. If you wish to have anything different an artwork set-up will apply along with a run charge.

**Acknowledgments:** Order acknowledgments will be sent by e-mail. Orders will be put into production based on acknowledgment specifications unless otherwise advised.

**Packaging:** All daily calendars are shrink wrapped prior to boxing. Other items can be shrink wrapped at a cost of \$.30 (t) if desired. In an effort to reduce environmental waste, we sometimes reuse corrugated cartons for shipping product.

**Shipping:** Shipped either UPS ground or truck (usually over 1200 lbs) from our factory in Tennessee. Shipments are at published rates or discounted hundredweight rates if over 200 lbs. We do not charge a handling fee. The drop ship charge for multiple locations is \$6 (t) for domestic shipments (no charge for single, domestic location) and \$10 (t) for international shipments. For personalized products, an additional \$.20 (t) per calendar to sort by location applies.

**Mailing Services:** Mailing services, for both standard rate and first class, are available. Please inquire for current rates. Standard rate mailings have a minimum of 200 pieces.

**Overruns/Underruns:** Our overrun/underrun policy is +/- 5% on most orders. Custom orders requiring special inks are subject to the printing industry standard of +/- 10%. Add 3% for exact quantities. Name Personalized calendars are shipped exact quantity.

**Production Time:** Production times vary by product, by quantity ordered, and by time of year. If a delivery time is important, please discuss the production schedule with our customer service department prior to placing your order. Typical production time during the months of October-December is 15-20 business days.

**\*PLEASE NOTE: YOUR P.O. DOES NOT DICTATE PRODUCTION TIME.**

**Rush Orders:** It is our general policy to do everything possible to serve the customer's needs. If we can meet a rush delivery without causing inefficiencies in our production process (such as excessive overtime, rush order of materials, etc), then we will produce a rush order without any surcharge. If a rush situation does involve extra cost, then any surcharges will be quoted on a case by case basis.

**Errors/Corrections:** If an order contains an error that is the fault of the factory, then we will repair or replace the product or issue a refund. We will generally cover the cost of standard ground freight as well. We are not responsible for expedited freight costs. If an error is the fault of the customer, we often offer to rerun the order at a discount to lessen the financial burden of an error.

# CUSTOM PROJECTS ARE WELCOME!

We welcome completely custom projects in all sorts of custom sizes. Please email [info@bkpress.com](mailto:info@bkpress.com) with detailed specifications to get a custom quote on your next project.

