



DRIVEN BY INNOVATION FOR OVER 35 YEARS

To our Distributor Partners,

From our first Apron in 1984 to today's full line of Aprons, Uniforms, Chef Apparel, and Display Products, Aprons, Etc. has continued to provide the highest level of quality and service for over thirty-five years.

We dedicate our catalog to our Distributor Partners – featuring eighty pages of innovative designs, trends, colors, and styles, and our ETC. family of products. With your partnership, we have been instrumental in becoming a leading supplier within the promotional products industry.

Our award winning 5-star customer service and our creative graphics team are both always available with the intention of making your job easier by providing all the information needed for your account presentations.

Your success is our priority. We are excited to collaborate with you in the months ahead to achieve our mission of innovative growth.

The A Team

Laura Lisa



Jeff Melissa

Jimmy Mark

ApronsEtc.com

Casey



TABLE OF CONTENTS

03 **APRONS**

20 **CHEF
APPAREL**

28 **VESTS &
SMOCKS**

37 **TABLE
COVERS**

47 **EVENT
ADVERTISING**

67 **DRINKWARE**

71 **ETC
PRODUCTS**

APRONS

#V3000C
Page 13

#V3000H
Page 13





Kitch Style Washed Canvas Apron

#KO-HCA

Designed to not only be stylish but also durable & functional with its double soft leather pen or spoon holder and double pockets. Each of its long 60" cross-over canvas straps has a soft top layer of cowhide and exquisite hardware buckles.

SHIPPING INCLUDED TO 1 U.S. LOCATION

Construction

16 oz. 65/35 Polycotton twill

Production

Blank- 10-15 Business Days

Stock Colors





Black

Light Green

Grey

Brown

Cream

Red

Teal

Purple

Blue

Pink



Kitch Style Vintage Color Bib Aprons

#FCM8 >

- Adjustable neck with metal buckle
- Center divided patch pocket
- Pencil/thermometer pocket
- Black, extra long ties
- 23.5"W x 34"L
- 4 **VINTAGE** colors



Stock Colors



BLUE SLATE

- 100% cotton, 8.5 oz.
- Authentic, clean texture



NATURAL

- 100% cotton, 8.5 oz.
- Organic textured finish



HEATHER GRAY

- 7.5 oz. 65/35 poly/cotton
- Woven finish



SPICE

- 100% cotton, 9 oz.
- Herringbone texture

Kitch Style Vintage Color Bistro Aprons

#FCM241 >

- 28"W x 32"L
- Inset pocket
- Black, extra long ties
- 4 **VINTAGE** colors

#FCM28 >

- 28"W x 19"L
- Center divided patch pocket
- Black, extra long ties
- 4 **VINTAGE** colors



Stock Colors



BLUE SLATE

- 100% cotton, 8.5 oz.
- Authentic, clean texture



NATURAL

- 100% cotton, 8.5 oz.
- Organic textured finish



HEATHER GRAY

- 7.5 oz. 65/35 poly/cotton
- Woven finish



SPICE

- 100% cotton, 9 oz.
- Herringbone texture



Kitch Style Everyday Colors Bistro Aprons

#FCME28 >

- 7.5 oz. 65/35 polycotton twill
- Stain release treated fabric
- Center divided patch pocket
- Black, extra long ties
- 12 **EVERYDAY** colors
- 28"W x 19"L

Stock Colors



Burgundy



Kitch Style Everyday Colors Bib Aprons

#FCME8 >

- 7.5 oz. 65/35 polycotton twill
- Stain release treated fabric
- Center divided patch pocket
- Pencil/thermometer pocket
- Adjustable neck with metal buckle
- Black, extra long ties
- 6 **EVERYDAY** colors
- 23.5"W x 34"L

Khaki

Stock Colors





#V3104-
Black

#V3104C-
Indigo Denim

#V3104C-
Pinstripe Denim

#V3104-
Slate

#V3104C-
Caramel

#V3104C-
Pinstripe Denim
(Alternate color pockets)

#V3104C-
Gray Broken Twill

#V3104 - Kitch Style Bib Apron - Black or Slate

- 36"W x 34"L
- 7.5 oz. 65/35 polycotton twill
- Two reinforced hip pockets
- Pencil/Thermometer chest pocket
- Closed loop adjustable neck
- Extra long 43" ties



Slate with
Burgundy ties



Black with
Red ties



Black



Caramel

#V3104C - Kitch Style Bib Apron - Colors

- 36"W x 34"L
- Two reinforced hip pockets
- Pencil/Thermometer chest pocket
- Closed loop adjustable neck
- Extra long 43" ties



Indigo Denim- 12oz.,
100% cotton,
Black ties



Pinstripe Denim- 10.4oz.,
100% cotton,
Burgundy ties



Caramel- 8.9oz.,
100% cotton,
Natural ties



Gray Broken Twill-
7oz., 65/35 polycotton,
Red ties



Pinstripe Denim-
(Alternate color pockets)
10.4oz., 100% cotton,
Burgundy ties



#V3128
Sea Green

#V3127 - Kitch Style Canvas Apron with Natural Ties

- 23"W x 34"L
- 7.5 oz. 65/35 polycotton twill
- Divided center pocket
- Angled chest pencil pocket
- Extra long 40" natural web ties



#V3128 - Kitch Style Canvas & Denim Apron with Black Ties

- 23"W x 34"L
- 7.5 oz. 65/35 polycotton twill
- Divided center pocket
- Angled chest pencil pocket
- Extra long 40" black web ties



#V3127
Banana Yellow

Kitch Style Denim Bib Apron with Leatherette Trim

#KDLTR > 100%, 12.6 oz. cotton denim. Large 27"W x 31"L denim bib apron with faux leather adjustable neck straps.

Brown webbing ties at the waist allowing for easy adjustment. Large divided center pocket and chest pocket. Stylish leather accent straps on the front of the apron.

**FREE SHIPPING -
1 US LOCATION**

Production

Blank - 10 business days

Stock Colors

Blue Denim
Black Denim

Blue Denim
Shown

Kitch Style Denim Bib Apron with Grommets

#KDGRT > 100%, 12.6 oz. cotton denim. Large 27"W x 31"L denim bib apron with brass grommets at the neck and waist to adjust brown webbing for standard or cross-over back wearing. Functional large triple hip pocket with durable brass reinforced tacking. Towel loop.

**FREE SHIPPING -
1 US LOCATION**

Production

Blank - 10 business days

Stock Colors

Blue Denim
Black Denim

Black Denim
Shown



#FB55B
Dark Khaki

#FB55B - Kitch Style Urban Cool Bib Apron

- 31.5"W x 35"L
- 50/50 polished cotton blend
- Center divided patch pocket with large pencil / thermometer pocket
- Matching fabric cross over x-back or interchangeable colored twill straps



Navy Blue



Dark Khaki



Black



Slate Gray

#FB54 - Kitch Style Urban Cool Waist Apron

- 31.5"W x 17"L
- 50/50 polished cotton blend
- Center divided patch pocket with large pencil / thermometer pocket
- Matching fabric waist strap or interchangeable colored twill straps



Navy Blue



Dark Khaki



Black



Slate Gray

Back View

Back View



Navy Blue



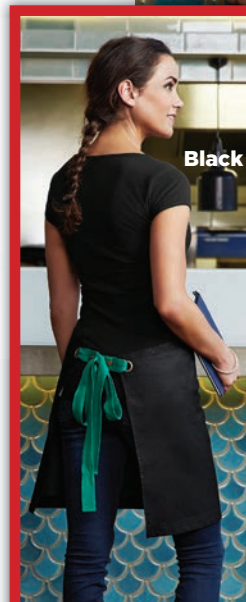
• 100% polyester twill

#FB52BS - Bib Straps

- Red
- Black
- Royal

#FB51S - Waist Straps

- Brown
- Navy
- Green



Black



#FB54
Slate Gray

#V3105 - Kitch Style Pinstripe Denim Bistro Apron

- 31.5"W x 33"L, bistro apron
- 10.4 oz. 100% cotton denim
- Patch pocket with pencil insert
- Reinforced bar tacking
- Extra long 43" red web ties



Basic No-Pocket Bib Apron

- 7.5 oz. 65/35 polycotton twill
- 30"W x 34"L
- No pocket
- Non-adjustable neck
- Extra long 40" ties

Stock Colors:

#V3000 >



White



#V3000C >



Brown



Black



Burgundy



Hunter Green



Kelly Green



Khaki



Navy



Purple



Red



Royal



Silver

#V3000H >



Houndstooth

#V3000C
Silver



Adjustable No Pocket Bib Apron

- 7.5 oz. 65/35 polycotton twill
 - 24"W x 28"L
 - No pocket
 - Adjustable neck
 - Extra long 40" ties

Stock Colors:

#EF33B >



Black

#V3010 >



White



Brown



Burgundy



Hunter Green



Kelly Green



Khaki



Navy



Purple



Red



Royal



#V3010
Kelly Green

Economy Bib Apron

- 28"W x 33"L, full size bib apron
- 100% brushed polyester
- No pockets and a non-adjustable neck
- 36" ties, bar tacked ties for added durability
- Wrinkle resistance

Stock Colors:

#W4010 >



**#W4010
Navy**



Adjustable 3 Pouch Pocket Apron

- 28"W x 24"L, mid-length bib apron
- 7.5 oz. 65/35 polycotton twill
- 3 divisional pouch pockets and adjustable neck
- Extra long 40" ties, reinforced bar tacking

#EF10C
Royal

Stock Colors:

#EF10 >



#EF10C >



#EF10B >



Adjustable 2 Patch Pocket Apron

- 23"W x 30"L, full length bib apron
- 7.5 oz. 65/35 polycotton twill
- 2 patch pockets and an adjustable neck
- Extra long 40" ties, reinforced bar tacking

Stock Colors:

#EF53B >



Black

#EF53 >



Hot Pink



Lime Green



Mango Yellow



Black Pinstripe



Silver Gray



Turquoise Blue

#V3016 >



White



Brown



Burgundy



Hunter Green



Kelly Green



Khaki



Navy



Purple



Red



Royal



#V3016
White



Value Adjustable 2 Patch Pocket

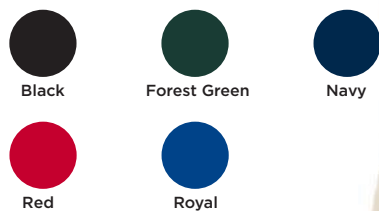
- 7.5 oz. 45/55 polycotton twill
- 22"W x 30"L
- (2) 7" patch pockets
- Adjustable neck
- 24" long waist ties
- Round bottom corners

Stock Colors:

#W4350 >



#W4350C >



#W4350
Natural

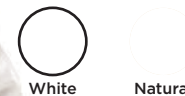


Value Adjustable 3 Pouch Pocket

- 7.5 oz. 45/55 polycotton twill
- Triple 8" pouch pockets
- Round bottom corners
- Adjustable neck
 - 22"W x 24"L
 - 24" waist ties

Stock Colors:

#W4250 >



#W4250C >



#W4250C
Navy



Premium 2 or 3 Pocket Waist Apron

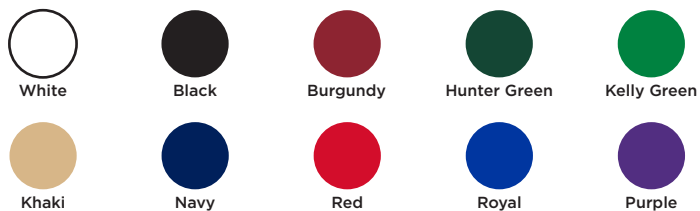
- 23"W x 11"L
- 7.5 oz. 65/35 polycotton twill
- 2 or 3 section pouch divided pockets
- Extra long 40" ties, reinforced bar tacking

Stock Colors:

#V3065 >



#V3067 >



#EF9 >



#V3067
3- section
pocket





#CF-HCWA
Dye Sub
Waist Apron

#CF-CPA
Adult Bib Apron

Dye Sublimated Waterproof Aprons

10 business days production after eproof approval. Templates available on ApronsEtc.com

#CF-CPA> Adult Size

- 24"W x 28.5"L
- 300D polyester fabric
- Full color, dye sublimated
- Waterproof, oil proof, and stain resistant treated
- Adjustable neck and 30" waist ties
- Large single front pocket (12"W x 7"H)
- Individually bagged

#CF-CPAY> Youth Size

- 20"W x 25"L
- 300D polyester fabric
- Full color, dye sublimated
- Waterproof, oil proof, and stain resistant treated
- Adjustable neck and 26" waist ties
- Large single front pocket (9"W x 5"H)
- Individually bagged

#CF-HCWA> Waist Apron

- 23.6"W x 13"L
- 300D polyester fabric
- Full color, dye sublimated
- Waterproof, oil proof, and stain resistant treated
- 33.5" waist ties
- Two 7.9"W x 7.9"H front pockets
- Individually bagged



FREE SHIPPING - 1 U.S. LOCATION



CHEF APPAREL

#VO490 - Page 23



Chambray Denim Chef Coat

#V0405C > 6.5 oz. 100% premium cotton twill. Lightweight and soft long sleeved unisex chef coat has a thermometer pocket and chest pocket. 10 plastic buttons.

Sizes > XL-6XL

Blank: 48 hours



French Knot Chef Coat

Unisex chef coat has breast and thermometer pocket, 10 knot buttons. Traditional Styling.

Sizes > XS-3XL (4XL-6XL inquire)

#V0403 > 100% cotton white chef coat

#EC10F > 7.5 oz. 65/35 polycotton twill black chef coat





#V0490B
Black



#V0490
White

Women's Knot Button Black or White Chef Coat

7.5 oz. 65/35 polycotton twill. Proportioned for better fit on women, the coat has 10 inset knot buttons and side vent openings.

Sizes > XS-XL (Inquire 2XL-6XL)

#V0490B > Black Coat. XS-XL (Inquire 2XL-6XL)

#V0490 > White Coat. XS-XL (Inquire 2XL-6XL)

Women's Chef Coat

7.5 oz. 65/35 polycotton twill. Ladies long sleeve chef coat with tailored side vents, 10 color matched buttons, left arm thermometer pocket, reversible front closure.

Sizes > S-XL (Inquire 2XL-3XL)

#SC100W > White

#SC100B > Black

#SC100C > Red or Hot Pink



#SC100W
White



#SC100C
Pink



Freedom Movement Short Sleeve Chef Coat








5.3 oz. lightweight 65/35 polycotton fine line twill. Short or Long sleeves. Hidden zipper, asymmetrical closure. Half mesh tonal back, 4" side vents for ease of fit. Thermometer sleeve and pockets.

Sizes > XS-1XL (2XL-4XL inquire)

#V0703 > Short sleeve.
#V0704 > Long sleeve.

Blank: 48 hours

Stock Colors:

-  Black
-  White
-  Slate Gray
-  Sky Blue
-  Orange
-  Deep Royal
-  Grape Purple



#V0704
Deep Royal



Chef Coat with Accent Trim

#V0404C > Easy Care 65/35 poly cotton twill - 7.5 oz., upscale look with custom spun polyester trim. 10 complimentary black buttons.

Sizes > XL-2XL (Inquire 4XL-6XL).

Blank: 48 hours

Stock Colors:

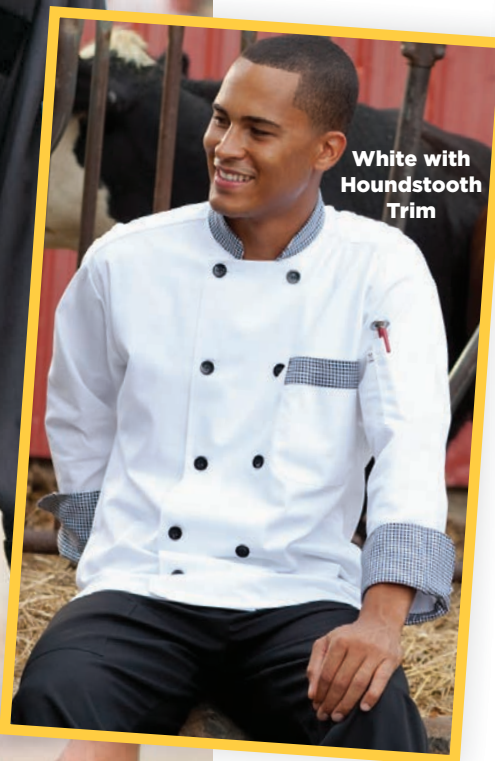
Red with Black Trim

Slate with Black Trim

White with Houndstooth Trim



Slate with Black Trim



White with Houndstooth Trim



Red with Black Trim



Best Value Chef Coat and Baggy Pants

7.5 oz. 65/35 polycotton twill. Classic unisex style chef coat has breast and thermometer pockets and 8 pearl buttons. Chef pants have drawstring, one back pocket, two side pockets and full cut leg for comfort.

- #V0400 White Coat > S-3XL (Inquire 4XL-6XL)
- #V4000W White Pants > XS-1XL (Inquire 2XL-6XL)
- #V4000B Black Pants > XS-1XL (Inquire 2XL-6XL)
- #V4000P Pattern Pants > XS-1XL (Inquire 2XL-6XL)

Blank: 48 hours



#V0400 White Chef Coat





#EC20W
White Traditional
Chef Hat

Traditional Chef Hats and Beanies

Promotional and uniform use.

#EC20W > White, 4.5 oz. 65/35 polycotton twill traditional chef hat styling with hook/loop closure.

#EC20C > Black or Red, 4.5 oz. 65/35 polycotton twill traditional chef hat styling with hook/loop closure.

#EC24 > White or Black, 7.5 oz. 65/35 polycotton twill beanie with mesh top and elastic back.



#EC24
Black Beanie



VESTS & SMOCKS

#EV40 - Page 31



VALET



USA Made Non-Woven Bib



#8055NW >

Recyclable non-woven polypropylene. Short term use / disposable. Bib is 18"W x 20"H, loop-over neck.

Blank:

10 business days

Printed:

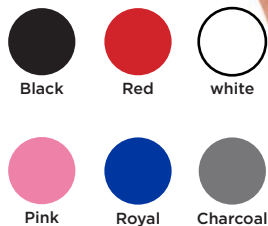
15 business days production after eproof approval

Imprint area:

screen print
10"W x 14"H



Stock Colors:



Custom Sport / Training Bib

Made of lightweight / durable 115g polyester and designed with a two piece elastic waist band, our custom made sport bibs are comfortable to wear, easy to put on and take off. Your logo, image, or any color you like can be digitally printed.

FREE SHIPPING - 1 U.S. LOCATION

Children's sizes quoted upon request.



Printed: 5 business days production after eproof approval.

Imprint area: Entire bib. Templates available on ApronsEtc.com.

Style #	Product Dimensions
CMSB-A	Adult Average, 16.5"W x 27"L
CMSB-L	Adult Large, 19"W x 27.5"L

Non-Button Unisex Uniform Vest

#A3100 > 7.5 oz. 65/35 polycotton twill unisex non-button vest with 2 side, 6" pockets. Matching color binding. Open front for casual sizing ease.

Sizes > S-XL (2XL-4XL inquire)

Blank: 10 business days

Printed: 15 business days production after eproof approval

Stock Colors:



SIZE CHART	
SMALL	21.5"W x 25"L
MEDIUM	23"W x 26"L
LARGE	24"W x 27"L
XL	25.75"W x 28.75"L
2XL	27.5"W x 30"L
3XL	29"W x 31"L
4XL	31"W x 32"L

#A3100S
STOCKED
NON-BUTTON VESTS
S-XL - 12-75 pcs. only
Blank only - Ship in 48 hours
Black or Royal Twill



#A3100
Royal





#EV40
Red

Button Unisex Uniform Vest

7.5 oz. 65/35 polycotton twill unisex button vest with 4 color-matched buttons. Stain release finish. Stocked vest option.

#EV40 > with left chest pocket & pencil divide.

#EV65 > with 2 side pockets.

Sizes > S-XL (2X-5X inquire).

Stock Colors:



#EV65 - 2 side pockets

*EV40 not available in Brown.

**EV65 not available in Khaki.



High Visibility Safety Shirts

100% polyester birds-eye knit mesh shirts. Short (#ES906) or long sleeve (#ES907) ANSI Class 2 shirts with left chest pocket.

Sizes > M-5XL

Stock Colors:



Hi-Viz
Lime



Hi-Viz
Orange



#ES906
Hi-Viz Lime
Safety shirt



High Visibility Safety Vests

100% polyester knit mesh ANSI Class 2 safety vests. Conforms to ANSI/SEA 107 standard for design, color, and reflectivity.

#ES362 > Hook/loop front closure, no pockets.

#ES363 > Zipper, 2 waist pockets, left chest pocket.

#ES383P > Silver reflective tape / contrasting trim. 6 pockets, zipper closure.

Sizes > M-5XL



#S383P



#ES363



#ES362



Cobbler Smock-2 Pockets

7.5 oz. 65/35 polycotton twill unisex cobbler smock apron. Has a divided pouch pocket, full rounded styling and side ties. Stain release finish.

Great choice for retail, hospitality, and volunteer use.

#EF12 > 20"W x 28"H

#EF12D (Designer Colors) > 20"W x 28"H

#EF12XL (Plus Size) > 22"W x 31"H

#EF12/#EF12XL Stock Colors:



Khaki Navy Purple Red Kelly Green



Burgundy Hunter Green Royal Blue White Black

#EF12D Stock Colors:



Turquoise Blue Yellow Jade Green Charcoal Gray



Teal Green Lime Green Mango Orange Mocha Brown Raspberry Pink



#EF12/EF12XL
Royal Blue



Unisex and Women's Button Smocks

#EK71W/C > 4.5 oz. 65/35 polycotton poplin. Unisex coat has 2 lower patch pockets, 4 color-matched buttons and half length sleeves.

#EK72 > 4.5 oz. 65/35 polycotton poplin. Female coat with 2 lower patch pockets, 4 color-matched buttons and 3/4 length sleeves.

Sizes > XS-3XL (4XL-5XL Inquire)



#EK71C
Royal

#EK71W Stock Color:



White

#EK71C Stock Colors:



Black



Burgundy



Hunter Green



Royal Blue



Salmon



Ceil Blue



Navy



Red



Teal



Tan

#EK72 Stock Colors:



Black



Burgundy



Hunter Green



Ceil Blue



Salmon



Tan



Teal



White



Navy



Red



Royal Blue



#EK72
Ceil Blue



#EL2
Navy



Short Lab Coat >

#EK73 > 4.5 oz. 65/35 polycotton poplin unisex coat. 2 lower patch pockets, left chest pocket, 4 color matched buttons and full length sleeves.

Sizes > XS-3XL (4XL-5XL Inquire)

Stock Colors:



#EK73
Black



<Long Lab Coat

4.5 oz. 65/35 polycotton poplin unisex coat has a breast pocket, 2 lower pockets and stitched down back belt. Size proportionate lengths.

#EL1 > Female coat. 5 button front.

#EL2 > Male coat. Side slits for pockets, 4 button front.

Sizes > XS-3XL (4XL Inquire)

Stock Colors:



TABLE COVERS



Recyclable Plastic Full Color Digital Imprint Covers

Recyclable 1.6 mil plastic disposable / short term use table cover.
 Direct digital printing process, up to full color - photographic imprints.
INDUSTRY EXCLUSIVE PRODUCT

Production: 10-15 business days production after eproof approval

Imprint Area: 22”H x 30”W. Template available on ApronsEtc.com.

Stock Colors: Red, Royal, White, Black

Style #	Product Dimensions
8011CF	65” x 65” Runner or fit a Card Table
8012CF	65”W x 108”L, 4’ Flat, 3 Sided w/ 5” Back
8013CF	65”W x 132”L, 6’ Flat, 3 Sided w/ 5” Back
8014CF	65”W x 156”L, 8’ Flat, 3 Sided w/ 5” Back



Style #	Product Dimensions
8023SR	54" x 54"
8010SR	54"W x 108"L, 4' Flat, 3 Sided
8012SR	65"W x 108"L, 4' Flat, 3 sided w/ 5" Back
8013SR	65"W x 132"L, 6' Flat, 3 Sided w/ 5" Back
8014SR	65"W x 156"L, 8' Flat, 3 Sided w/ 5" Back
8015SR	54"W x 132"L, 6' Flat
	Add Color on White Only

Style #	Product Dimensions
8040SR	54"W x 100' Roll
8040SR2	54"W x 100' Roll, 2 color Banquet Roll

Recyclable Step and Repeat Plastic Table Covers

Recyclable 1.4 mil plastic table covers. Drapes & banquet roll size choices. All over step and repeat logo. Multi-color imprinting starts at 2500 pieces (inquire). **INDUSTRY EXCLUSIVE PRODUCT**

Production: 20 business days after eproof approval

Imprint Area: Print repeats every 24"

Stock Colors: White (Inquire for colored plastic options with up charge)



Screen Print Value Quantity Covers

100% polyester poplin table cover comes in a **1 color screen print**. Standard sizes available or custom size by quotation. Flame retardant and soil release finish. FREE clear plastic zippered storage bag. **MINIMUM QUANTITY 6**

Production:

- *Stock Colors: 10 business days after eproof approval.
- **Non-stock colors: 15 business days after eproof approval.

Imprint Area: 22”H x 33”W screen print. Template available on ApronsEtc.com.

Stock Colors: *Red, Royal, Navy, Black, and White.
 **Plus 64 non-stock colors.

Style #	Product Dimensions
4522P	60” x 60” Runner or fit a Card Table
4508P	60”W x 132”L, 6’ Flat, 3 Sided
4525P	90”W x 132”L, 6’ Flat, 4 Sided
4518P	30” x 30” x 72”, 6’ Fitted
4523P	60”W x 156”L, 8’ Flat, 3 Sided
4526P	90”W X 156”L, 8’ Flat, 4 Sided
4520P	30” x 30” x 96”, 8’ Fitted



Quick Turn 48hr - 5 Day Screen Print Table Covers

Style #	Product Dimensions
4525P-48	90"W x 132"L - 6' Flat, 4 sided - 48 hr.
4526P-48	90"W x 156"L - 8' Flat, 4 sided - 48 hr.
4525P-5	90"W x 132"L - 6' Flat, 4 sided - 5 day
4526P-5	90"W x 156"L - 8' Flat, 4 sided - 5 day

100% polyester poplin table cover with a **1 color screen print**. Full coverage standard draped table cover sizes 6' and 8'. Flame retardant and soil release finish. FREE clear plastic zippered storage bag.

Production: *P-48*: 48 hr. RUSH (**MINIMUM QUANTITY 1**)
P-5: 5 business days after eproof approval (**MINIMUM QUANTITY 2**)

Imprint Area: 22"H x 33"W screen print.
Template available on ApronsEtc.com



Stock Colors:

Red
Royal
Navy
Black
White

Screen print
Royal Blue



Dye Sublimation Table Runners

100% polyester poplin, USA printed and sewn table runners. Your choice of multiple location imprints and/or custom color fabric runner in true dye-sublimated print. FREE clear plastic zippered storage bag included.

Blank polyester table covers available.

Production: 5 business days production after eproof approval

Imprint Area: Entire runner. Template available on ApronsEtc.com



#7505R
60" x 60" runner



EASY CARE

- WASH
- DRY CLEAN
- WRINKLE RESISTANT



#7613R
30" x 90" runner

Style #	Product Dimensions
7612R	30" x 60" table runner
7610R	30" x 72" table runner
7613R	30" x 90" table runner
7505R	60" x 60" table runner



Dye-Sub Front Panel Imprint Cover

Style #	Product Dimensions
7501	30" x 30" x 72" - 6' Fitted, 4 sided
7502	90"W x 132"L - 6' Flat, 4 sided
7504	90"W x 108"L - 4' Flat, 4 sided
7507	30" x 30" x 96" - 8' Fitted, 4 sided
7508	90"W x 156"L - 8' Flat, 4 sided
7503E	Economy 60"W x 132"L - 6' flat, 3 sided
7509E	Economy 60"W x 156"L - 8' flat, 3 sided

Our 100% polyester poplin table cover is USA printed and sewn. Logo/colors are dye sublimated into fabric (NOT a surface transfer) and sewn onto stock body colors. FREE clear plastic zippered storage bag included.

Production: 5 business days production after eproof approval

Imprint Area:

4': Full bleed panel or standard imprint- 24" x 36"

6': Full bleed panel or standard imprint - 24" x 50"

8': Full bleed panel or standard - 24" x 72"

Templates available on ApronsEtc.com



EASY CARE

WASH

DRY CLEAN

WRINKLE RESISTANT

Stock Colors:
 Red - PMS 199 C
 Royal - PMS 2728 C
 Hunter - PMS 342 C
 Navy - PMS 280 C
 Black
 White



Dye Sublimated Fitted Covers

100% polyester poplin, full color/multi-location table cover available in 2 styles; traditional box fitted (no back slit) or with pleated corners. FREE clear plastic zippered storage bag included. **FREE SHIPPING - 1 U.S. LOCATION**

Production: 5 business days production after eproof approval

Imprint Area: Entire table cover. Template available on ApronsEtc.com

EASY CARE

-  WASH
-  DRY CLEAN
-  WRINKLE RESISTANT

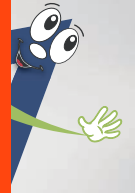
#7526 - 6' fitted, pleated corners



#7526-4 6' box fitted table cover



Style #	Product Dimensions
7524-4	30" x 30" x 48" - 4' Box Fitted, 4 sided
7524	30" x 30" x 48" - 4' Fitted, pleated corners
7526-4	30" x 30" x 72" - 6' Box Fitted, 4 sided
7526	30" x 30" x 72" - 6' Fitted, pleated corners
7528-4	30" x 30" x 96" - 8' Box Fitted, 4 sided
7528	30" x 30" x 96" - 8' Fitted, pleated corners



Dye Sublimated Throw / Draped Cover

Our 100% polyester poplin table cover has a full color/multi-location, all over dye sublimation imprint. Open back or full coverage versions available. FREE clear plastic zippered storage bag included.

FREE SHIPPING - 1 U.S. LOCATION

Production: 5 business days production after eproof approval

Imprint Area: Entire table cover. Template available on ApronsEtc.com



Open-Back Option View



EASY CARE

-  WASH
-  DRY CLEAN
-  WRINKLE RESISTANT

Style #	Product Dimensions
7511-3	65"W x 104"L - 4' Flat, open back, 5" back overhang
7511	88"W x 104"L - 4' Flat, 4 sided
7506-3	65"W x 128"L - 6' Flat, open back, 5" back overhang
7506	88"W x 128"L - 6' Flat, 4 sided
7510-3	65"W x 152"L - 8' Flat, open back, 5" back overhang
7510	88"W x 152"L - 8' Flat, 4 sided

#7506 - 88"W x 128"L
6' flat, 4 sided
table cover



Dye Sublimated Contour Stretch Covers

100% polyester stretch fabric. Custom color or multi-location dye sublimation imprint provides a smooth, fitted look. Reinforced cup is sewn in each corner for easy snug fit and protection against tears from table legs. Open back style option available. FREE clear plastic zippered storage bag included. **FREE SHIPPING - 1 U.S. LOCATION**

Production: 5 business days production after eproof approval

Imprint Area: Entire table cover. Template available on ApronsEtc.com



#7536-3
Open Back Version

EASY CARE

- WASH
- DRY CLEAN
- WRINKLE RESISTANT



#7536
4 sided, Full Coverage

***Zipper Back Available, Inquire for Price**

Style #	Product Dimensions
7534-3	30" x 30" x 48" - 4' Fitted, Open Back
7534	30" x 30" x 48" - 4' Fitted, 4 sided
7536-3	30" x 30" x 72" - 6' Fitted, Open Back
7536	30" x 30" x 72" - 6' Fitted, 4 sided
7538-3	30" x 30" x 96" - 8' Fitted, Open Back
7538	30" x 30" x 96" - 8' Fitted, 4 sided



EVENT ADVERTISING



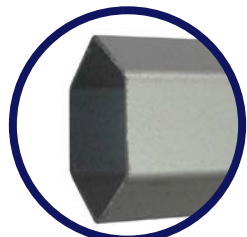
10' x 10' Deluxe Pop-Up Tent Shelter

#GN1050 > 600 Denier heavy duty polyester. Custom color and multi-location dye sublimation all-over imprint. Indoor/outdoor water and UV resistant tent canopy. Rust proof aluminum frame easily sets up and breaks down. Sturdy 1.5" hexagonal legs. Includes FREE wheeled carry case and ropes with stakes.

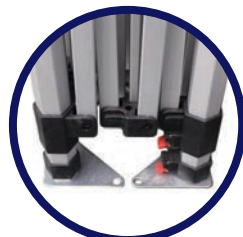
FREE SHIPPING - 1 U.S. LOCATION

Production: 5 business days production after eproof approval

Imprint Area: Canopy template available on ApronsEtc.com



Hexagonal Tent Leg Detail



Tent Leg Detail



FREE ropes with stakes included.



FREE carry case included.



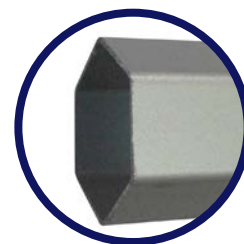
10' x 15' Deluxe Pop-Up Tent Shelter

#GN1150 > 600 Denier heavy duty polyester. Custom color and multi-location dye sublimation all-over imprint. Indoor/outdoor water and UV resistant tent canopy. Rust proof aluminum frame easily sets up and breaks down. Sturdy 1.5" hexagonal legs. Includes FREE wheeled carry case and ropes with stakes.

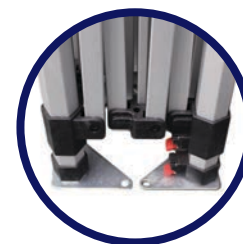
FREE SHIPPING - 1 U.S. LOCATION

Production: 5 business days production after eproof approval

Imprint Area: Canopy template available on ApronsEtc.com



Hexagonal Tent Leg Detail



Tent Leg Detail



FREE ropes with stakes included.



FREE carry case included.

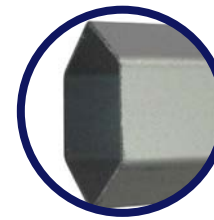


10' x 20' Deluxe Pop-Up Tent Shelter

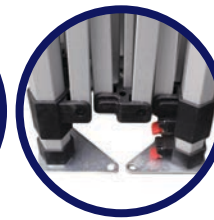
#GN2050 > 600 Denier heavy duty polyester. Custom color and multi-location dye sublimation all-over imprint. Indoor/outdoor water and UV resistant tent canopy. Rust proof aluminum frame easily sets up and breaks down. Sturdy 1.5" hexagonal legs. Includes FREE wheeled carry case and ropes with stakes. **FREE SHIPPING - 1 U.S. LOCATION**

Production: 5 business days production after eproof approval

Imprint Area: Canopy template available on ApronsEtc.com



Hexagonal Tent Leg Detail



Tent Leg Detail



FREE ropes with stakes included.



FREE carry case included.

**INQUIRE FOR
20' X 20'
TENT OPTION**



10' x 10' Tent Wall Panels & Accessories

#GT105FBS
Single-sided
Tent Flag

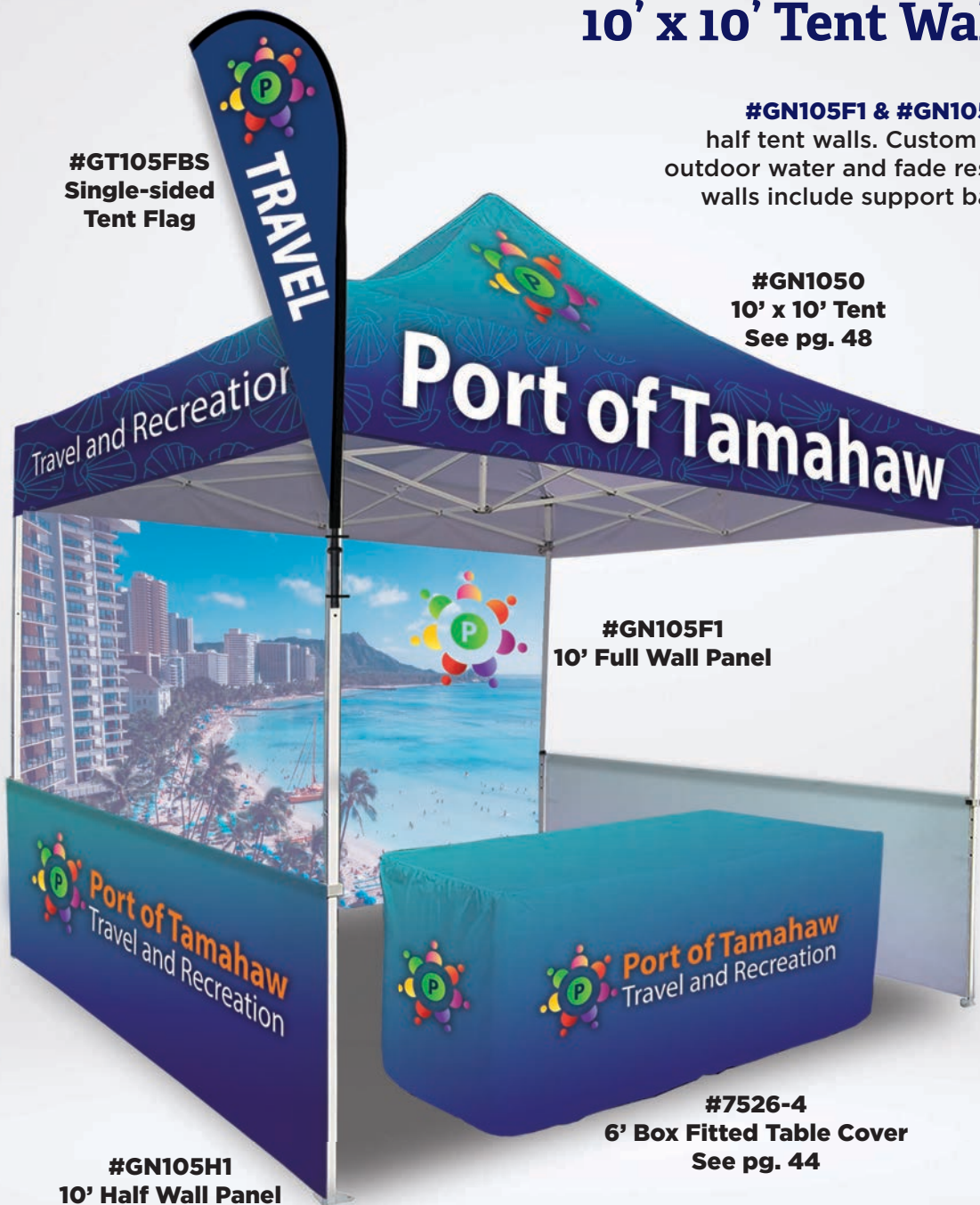
#GN105F1 & #GN105H1 > 600 denier heavy duty polyester full and half tent walls. Custom color dye sublimation all-over imprint. Indoor/outdoor water and fade resistant tent walls are flame retardant. Tent side walls include support bar. Tent walls have hook and loop attachments.
FREE SHIPPING - 1 U.S. LOCATION

#GN1050
10' x 10' Tent
See pg. 48

#GT105FBS > 4 oz. knit polyester mini teardrop flag (includes hardware) attaches to tent leg.
FREE SHIPPING - 1 U.S. LOCATION

Production:
5 business days production after eproof approval.

Imprint Area:
Layout templates available on ApronsEtc.com.



#GN105F1
10' Full Wall Panel

#GN105H1
10' Half Wall Panel
with bar

#7526-4
6' Box Fitted Table Cover
See pg. 44

Style #	Product Dimensions
GN105F1	10' Full Wall Panel
GN105H1	10' Half Wall Panel with bar
GT105FBS	Tent Flag

Pricing based on tent wall & accessories ordered with tent



Non-Woven Chair Cover

#4076NW > Short term use / disposable recyclable non-woven polypropylene advertising chair back covers. Draped / flat style with white elastic attachment. Inquire for black elastic. Custom sizes available to fit any chair back - inquire.

Production: 15 business days after eproof approval

Style #	Product Dimensions
4076NW	15"W x 24"H (laid flat)

Imprint Area: 11"W x 8"H, screen print on 1 side. Template available on ApronsEtc.com.

Stock Colors:

- Red White
- Royal Charcoal Gray
- Pink Black (1/c only)



Twill Economy Chair Cover

#4076 > Reusable, 7 oz. 65/35 polycotton twill value advertising chair back covers. Draped / flat style with white elastic attachment. Inquire for black elastic. Custom sizes available to fit any chair back - inquire.

Production: 15 business days after eproof approval

Style #	Product Dimensions
4076	18"W x 11.5"H - Chair Cover

Imprint Area: 11"W x 8"H, screen print on 1 side. Template available on ApronsEtc.com.

Stock Colors:

- Red White
- Royal Black (1/c only)
- Navy



Stretch Fit Chair Covers

#4080S > 100% polyester stretch fabric. Full color dye sublimation chair advertising cover. Stretch fabric fits snugly over folding chairs and most stadium seats. Printed single sided or double sided at the same cost.

FREE SHIPPING - 1 U.S. LOCATION

Production: 5 business days after eproof approval

Style #	Product Dimensions
4080S	18"W x 11.5"H - Chair Cover

Imprint Area: Front/back imprint. Template available on ApronsEtc.com.

INQUIRE FOR VARIABLE DATA

No additional cost - front and back imprint included



Stretch Fit Chair Bands

#4080B > 100% polyester stretch fabric. Chair bands designed to fit multiple shapes and thickness of chair backs. Full color / dye sublimated with full bleed. Standard construction has a raw edge (will not ravel).

FREE SHIPPING - 1 U.S. LOCATION

Production: 5 business days after eproof approval

Style #	Product Dimensions
4080B	14"W x 7.5"H - Chair Band

Imprint Area: Front/back imprint. Template available on ApronsEtc.com.

INQUIRE FOR VARIABLE DATA

No additional cost - front and back imprint included



Slipcover Fabric Banner Stands

High impact, full color dye sublimated image on soft knit polyester. Straight aluminum frame with sturdy support feet. Easy set-up, small footprint.

FREE SHIPPING - 1 U.S. LOCATION

Production: 5 business days production after eproof approval

Imprint Area: Size of banner. Templates available on ApronsEtc.com

Style #	Product Dimensions
360-2490	24" x 90" Banner
360-3690	36" x 90" Banner
360-6090	60" x 90" Banner



#360-6090
60" x 90" banner

#360-2490
24" x 90" banner



Canvas storage bag



Economy Banner Retractable Stand

#360-1111 > 13 oz. full color, curl free matte vinyl banner installed in an silver aluminum retractor base.

Production: 5 business days after eproof approval

Style #	Product Dimensions
360-1111	33.5"W x 80"H

Imprint Area: 33.5"W x 80"H. Template on ApronsEtc.com.



Mini Table Top Retractable Aluminum Stand

#360-1111TT > 13 oz. full color, curl free matte vinyl banner installed in a silver aluminum retractor base.

Production: 5 business days after eproof approval

Imprint Area: 11.7"W x 16.5"H. Template on ApronsEtc.com.

Style #	Product Dimensions
360-1111TT	11.7"W x 16.5"H



Straight Tension Stretch Fabric Backdrop

Full color dye sublimated image on 240g soft knit polyester fabric slipcover. Straight style frame stand with sturdy support feet. Free carry bag.

FREE SHIPPING - 1 U.S. LOCATION

Production: 5 business days production after eproof approval

Imprint Area: Size of frame front. Templates available on ApronsEtc.com

Style #	Product Dimensions
360-1194	8ft - 97"W x 91"H x 18"D
360-1195	10ft - 116"W x 91"H x 18"D



#360-1194
8ft Fabric Backdrop



Square & Triangle Tower LED Light Fabric Banner

100% Polyester & Aluminum tube frames. Easy to set up in seconds, small package for storing. Washable and reusable. Includes LED lighting. Available in 6ft, 8ft, and 10ft heights, 36.7”w sides. Can also be used horizontally. Includes carrying bag. **Towers without LED Lights available.**

Production: 5 business days production after eproof approval

Imprint Area: Side graphics, 36.7”w x Height of Tower.
 Templates available on ApronsEtc.com.

Square Light Tower



Triangle Light Tower



FREE carry case included.

Square Frame with lights



Triangle Frame with lights



Style #	Product Dimensions
LTT406 - Triangle	6ft- 36.7”w x 72”h
LTT408 - Triangle	8ft- 36.7”w x 96”h
LTT4010 - Triangle	10ft- 36.7”w x 120”h
LTS276 - Square	6ft- 36.7”w x 72”h
LTS278 - Square	8ft- 36.7”w x 96”h
LTS2710 - Square	10ft- 36.7”w x 120”h



Traditional Pop-Up Fabric Backdrop

Expands from a compact, one piece, collapsed frame to an impressive backdrop in seconds with secure clips. Wrinkle resistant soft knit polyester. Dye sublimated full front color graphic. Aluminum frame. FREE carry case.

Production: 5 business days production after eproof approval

Imprint Area: Backdrop size is imprint area. Templates available on ApronsEtc.com.



Style #	Product Dimensions
360KTBB8L	8ft - 96"W x 89"H
360KTBB10L	10ft - 120"W x 89"H



#360KTBB8L
8ft Pop-UP Backdrop



Also available without side wrap graphics.



Retail / Event Hanging Banner

#HB-3060 > 30"W x 60"H banner. Full color printed satin finish fabric. Hanging banner with top and bottom frame, (2) eyelet hooks for attaching wire (41" long) to hang or for use with direct to wall installation. Printed with reverse side 100% mirror effect of the same logo on the back side of double exposure of your brand. **FREE SHIPPING - 1 U.S. LOCATION**

Production: 5 business days production after eproof approval

Imprint Area: Size of banner. Templates available on ApronsEtc.com.



**Hanging Hardware
Included**



Table Top Billboard Displays

100% polyester / black metal frame. These table top billboard displays provide greater visibility in a small space that attach to the top of your standard tables up to 2" thickness. Great for table top trade shows or sampling stations. Three height options for 6ft or 8ft tables. Includes frame and carry bag. Single sided imprint. Inquire for double sided imprint. **Table Cover available separately - pg. 46.**
FREE SHIPPING - 1 U.S. LOCATION

Production: 5 business days production after eproof approval

Imprint Area: Banner size is imprint area. Templates available on ApronsEtc.com.

Style #	Product Dimensions
360-1618	6' Quarter Height, 18"H X 72"W
360-1641	6' Half Height, 41"H X 72"W
360-1668	6' Full Height, 68"H X 72"W
360-1818	8' Quarter Height, 18"H X 96"W
360-1841	8' Half Height, 41"H x 96"W
360-1868	8' Full Height, 68"H x 96"W

Quarter Height
Banner Only

Half Height Banner

Full Height Banner





**Backdrop Frame
and Free Carry Case
Included**

Portable Tabletop Tension Fabric Display

#CFTTFD > 240g stretch polyester fabric. Clean and compact, self-standing, slightly curved. Mini sized display (32.5"W x 20"H) has full color dye sublimation slip cover style graphic on an aluminum tube frame with zipper. Easy to set up and disassemble. Front imprint only. Backside will be white. Includes carry case. Table cover not included.

FREE SHIPPING - 1 U.S. LOCATION

Production:

5 business days production
after eproof approval

Imprint Area:

Size of frame front. Templates
available on ApronsEtc.com.



Inquire for blank table covers at ApronsEtc.com

Sport / Team Breakaway Banners

#CBB-610 > 6'H x 10'W, 110g knitted polyester fabric. Our breakaway banners are printed full color digitally and constructed with two fabric pieces that attached with hook and loop closures for easy breakthrough. 5.5" pole pocket on each side.

Call for quotes on custom sizes.
FREE SHIPPING - 1 U.S. LOCATION

Production: 5 business days production after eproof approval

Imprint Area: 6'H x 10'W banner.
Templates available on ApronsEtc.com



POLES NOT AVAILABLE

Golf Sponsorship Pin Flag

#GFT1420P > 200 denier nylon with plastic tube. Custom dye sublimation imprint golf pin flag comes with rotating tube. Flags have mirror image on the reverse side. Inquire for presentation, gift and grommet options. **FREE SHIPPING - 1 U.S. LOCATION**

Production: 5 business days after eproof approval

Style #	Product Dimensions
GFT1420P	Golf Flag - 20"w x 14"H

Imprint Area: Flag size is imprint area. Template available on ApronsEtc.com.

Golf Flag with sewn in Tube



INQUIRE FOR DOUBLE SIDED OPTION



FRONT



MIRROR IMAGE ON BACK

POLES NOT AVAILABLE

Rectangle Pole Flags

200 denier nylon. High resolution full color dye sublimation imprint flag. Finished with a canvas heading & grommets. Corners have reinforced stitching. Flags have a mirror image on the reverse side. **FREE SHIPPING - 1 U.S. LOCATION**

Production: 5 business days after eproof approval

Style #	Product Dimensions
GDF23	Full Color Pole Flag, 2' x 3'
GDF35	Full Color Pole Flag, 3' x 5'
GDF46	Full Color Pole Flag, 4' x 6'
GDF58	Full Color Pole Flag, 5' x 8'
GDF610	Full Color Pole Flag, 6' x 10'

Imprint Area: Flag size is imprint area. Template available on ApronsEtc.com.



POLES NOT AVAILABLE



Teardrop, Rectangle & Blade Wind Flutter Flags

4 oz. knit polyester wind flutter flags have full color dye sublimation imprint on a UV protected fade resistant fabric. Reinforced stitch construction with durable white or black rod pocket. Mirror image on the reverse side. Premium pole kit with rotating ground stake included. Free carry case. **FREE SHIPPING - 1 U.S. LOCATION**

Production: 5 business days production after eproof approval

Imprint Area: Entire flag. Templates available on ApronsEtc.com

Style #	Product Dimensions
GT207	30"W x 75"H - Teardrop Flag, single sided
GR1050	28"W x 71"H - Rectangle Flag, single sided
GB207	26"W x 79"H - Blade Flag, single sided
*GADDCW	Spider base / water bag option

OTHER SIZES AVAILABLE, INCLUDING DOUBLE SIDED



Premium pole kit and FREE carry case included.



#GADDCW: Add option of spider base with water bag for hard surfaces.



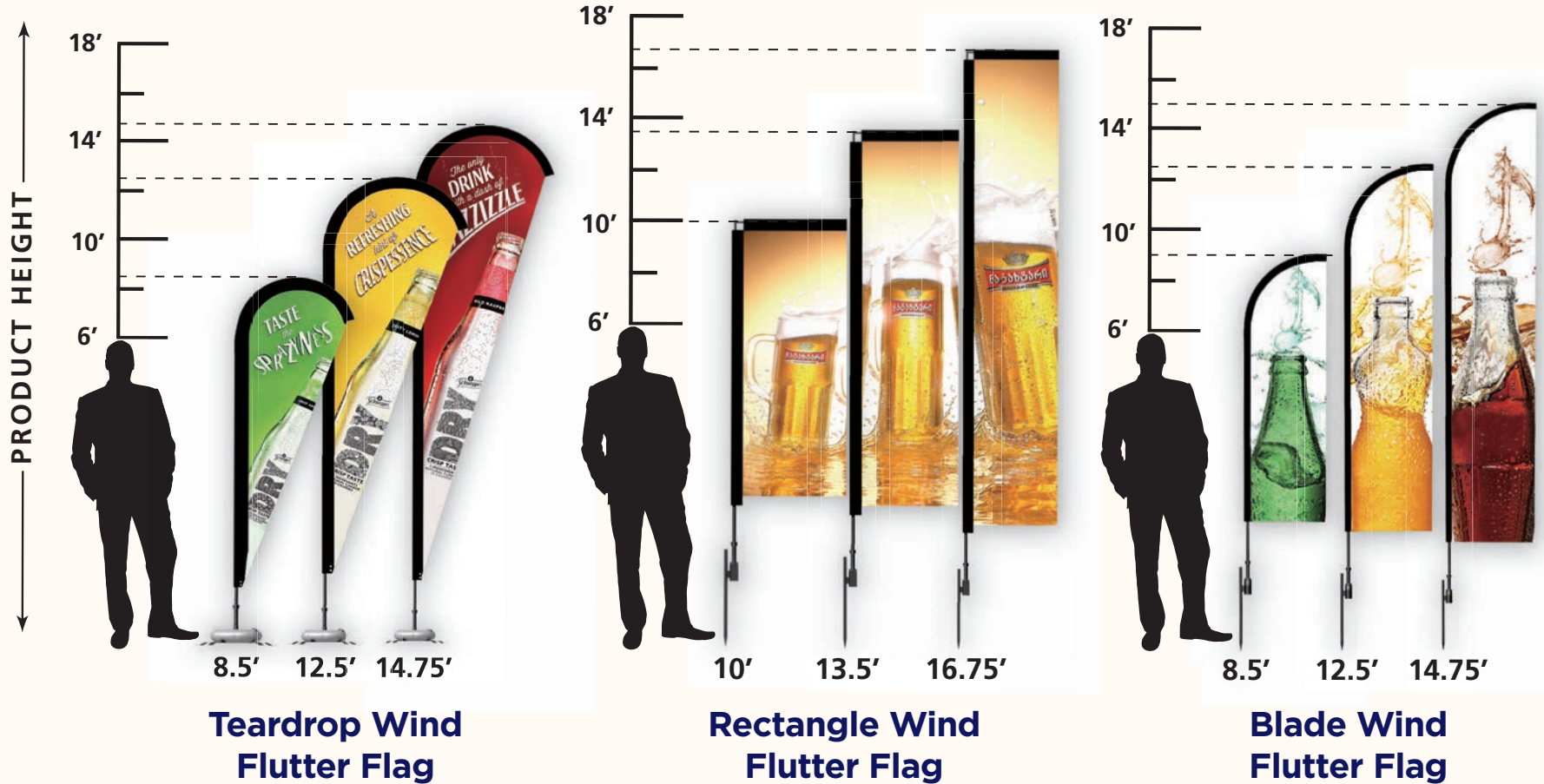
Rectangle Flutter Flag

Teardrop Flutter Flag

Blade Flutter Flag



Wind Flutter Flag Shapes and Size Guide



NEW
DUPLEX IMPRINT PROCESS
FOR DOUBLE SIDED FLAG OPTION

Instead of 3 layers of fabric: A SINGLE PIECE OF FABRIC IS PRINTED ON BOTH SIDES

Richer Color Reproduction & Individual Artwork Available For Each Side



#AC9983 in Blue
Page 68



DRINKWARE

Stainless Steel Coffee Cup with Sipping Lid

#AC9985 > 14 oz. cup, 4.5" H x 3.5" W, vacuum insulated with copper coating, keeps drinks hot for 8 hours, cold for 12 hours.

Production

Blank - 48 Hours
Screen Printed - 7 business days after eproof approval

Imprint Area

Templates available on ApronsEtc.com.

Stock Colors

Blue	White
Black	Lime
Grey	Red



Stainless Steel Wine Tumbler with Sipping Lid

#AC9986 > 12 oz. cup, 4.5" H x 3" W, vacuum insulated with copper coating, keeps drinks hot for 8 hours, cold for 12 hours.

Production

Blank - 48 Hours
Screen Printed - 7 business days after eproof approval

Imprint Area

Templates available on ApronsEtc.com.

Stock Colors

Aqua	Black
Lime	Navy
Red	
Steel	
White	



Speckled Campfire Mugs

#AC231 > 15 oz. ceramic mug, 3.5" H x 3.5" W.

Production

Blank - 48 Hours
Screen Printed - 7 business days after eproof approval

Imprint Area

Templates available on ApronsEtc.com.

Stock Colors

White	Black
Red	Royal
	Orange



Cork Base Ceramic Mugs with Lid

#AC566 > 12 oz. mug, 4.5" H x 3.5" W, ceramic with lid. Keeps drinks hot for 8 hours, cold for 12 hours.

Production

Blank - 48 Hours
Screen Printed - 7 business days after eproof approval

Imprint Area

Templates available on ApronsEtc.com.

Stock Colors

White
Royal
Black
Charcoal



INQUIRE: FULL COLOR DIGITAL OR ENGRAVED • SOLD BY THE CASE ONLY



Stainless Steel, Hot / Cold Tumbler with Slide Lid

#AC9983 > 20 oz. tumbler, 6.75" H x 3.5" W, vacuum insulated with copper coating, keeps drinks hot for 8 hours, cold for 12 hours.

Production

Blank - 48 Hours
Screen Printed - 7 business days after eproof approval

Imprint Area

Templates available on ApronsEtc.com.

Stock Colors

White
Lime
Red
Black
Grey
Blue



Lid

Stainless Steel, Large Car Cup Holder Tumbler with Slide Lid

#AC9987 > 20 oz. tumbler, 7"H x 3"W, vacuum insulated with copper coating, keeps drinks hot for 8 hours, cold for 12 hours.

Production

Blank - 48 Hours
Screen Printed - 7 business days after eproof approval

Imprint Area

Templates available on ApronsEtc.com.

Stock Colors

Steel
Glossy White
Matte Black
Metallic Gunmetal
Metallic Red
Metallic Blue



Lid



Stainless Steel, Cola Shaped Bottle, Leak Proof Lid

#AC9981 > 17 oz. bottle, 10”H x 2.75”W, vacuum insulated with copper coating, keeps drinks hot for 12 hours, cold for 24 hours.

Production

Blank - 48 Hours
Screen Printed - 7 business days after eproof approval

Imprint Area

Templates available on ApronsEtc.com.

Stock Colors

Metallic Rose Gold
Metallic Blue
Metallic Gunmetal
Steel
Matte Black
Matte White
Matte Blue
Matte Gunmetal



Lid



Stainless Steel, Large Car Cup Holder Tumbler with Slide Lid

#AC9988 > 18 oz. bottle, 8”H x 2.5”W, vacuum insulated with copper coating, keeps drinks hot for 12 hours, cold for 24 hours.

Production

Blank - 48 Hours
Screen Printed - 7 business days after eproof approval

Imprint Area

Templates available on ApronsEtc.com.

Stock Colors

Blue
Grey
Lime
Red
White
Black



Lid



INQUIRE: FULL COLOR DIGITAL OR ENGRAVED • SOLD BY THE CASE ONLY



Stainless Steel, Leak Proof Bottle with Stainless Carry Bar

#AC9990 > 17 oz. bottle, 9.75" H x 2.5" W, vacuum insulated with copper coating, keeps drinks hot for 12 hours, cold for 24 hours.

Production

Blank - 48 Hours

Screen Printed - 7 Business Days after eproof approvals

Imprint Area

Templates available on ApronsEtc.com.

Stock Colors Green

- Black
- Red
- Steel
- White
- Blue



Lid

Stainless Steel, Leak Proof Bottle, Stainless Carry Bar, Bamboo Accent Top

#AC9992 > 20 oz. bottle, 10.25" H x 2.75" W, vacuum insulated with copper coating, keeps drinks hot for 12 hours, cold for 24 hours.

Production

Blank - 48 Hours

Screen Printed - 7 Business Days after eproof approvals

Imprint Area

Templates available on ApronsEtc.com.

Stock Colors

- Black
- Brick Red
- Blue
- Green
- Grey
- White



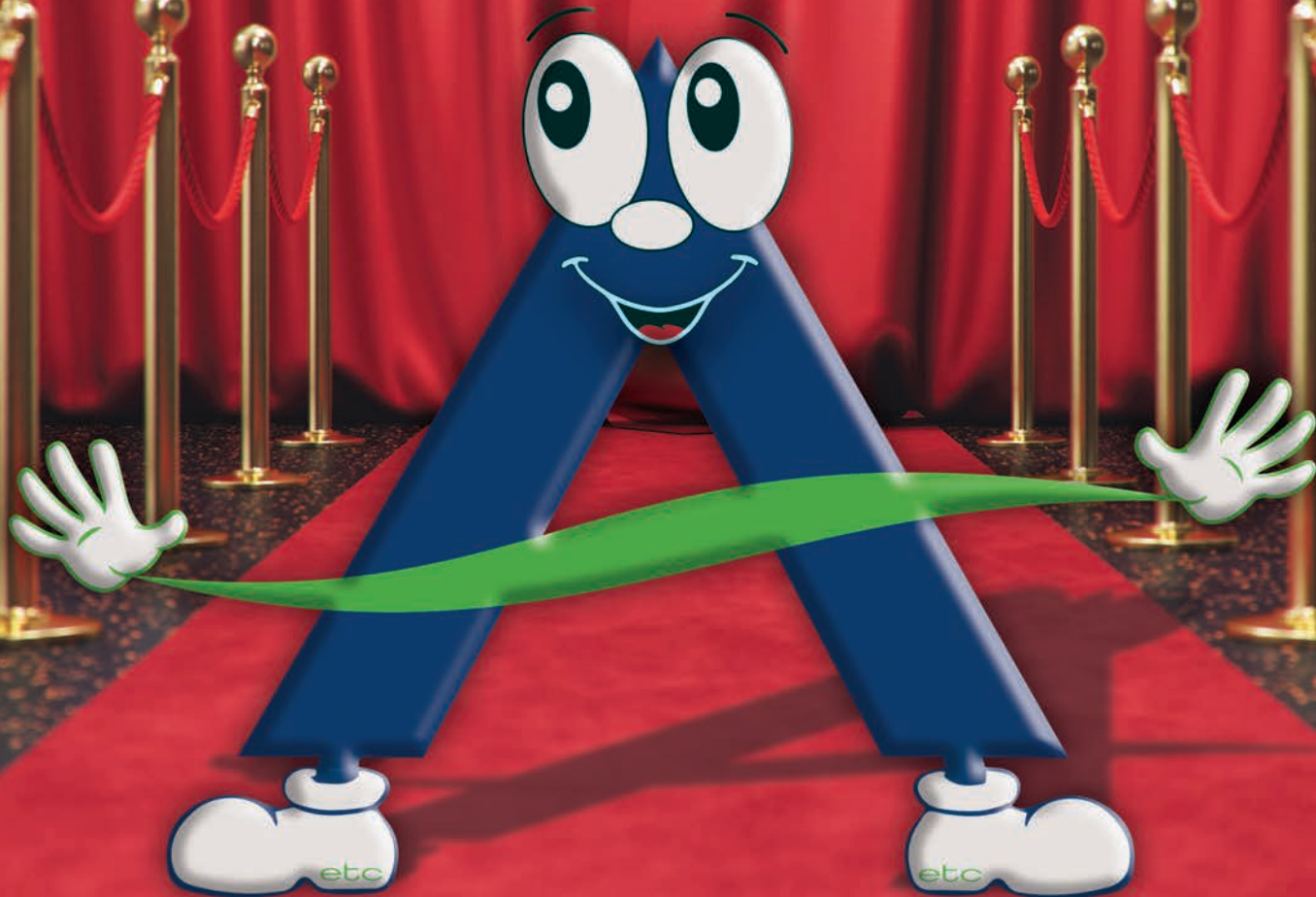
Lid

INQUIRE: FULL COLOR DIGITAL OR ENGRAVED • SOLD BY THE CASE ONLY



INTRODUCING

ETC GUY

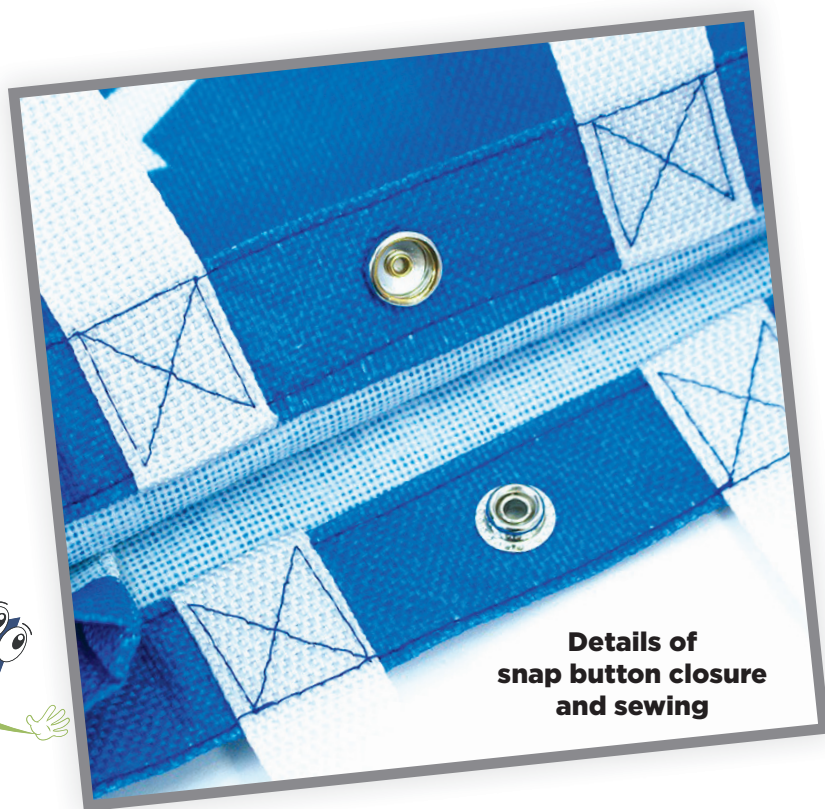


Promotional Grocery Tote

#CF-PGT > Large, 16.5"W x 13"H x 5.5"D 450D Oxford Grocery Tote. These custom printed grocery totes are durable and recyclable. Each bag has long straps for convenient carrying comfort, a reinforced bottom panel to prevent wear & tear for heavy items, and a metal buckle at the opening to secure your belongings in the bag. **FREE SHIPPING - 1 U.S. LOCATION**

Printed: 5 Business Days after eproof approval.

Imprint Area: 16.5"W x 13"H x 5.5"D. Template available on ApronsEtc.com.



A Different Type of Tote!

**IMPRINTED
TOTES
AVAILABLE**

W1630C- Style Icon Heavy Canvas Tote Bag - Colors

100% Cotton tote bag with large grommets and striped handles. Size: 13.25"W x 15.75"H x 3.5"G Imprint: 10"W x 10"H. Case 6 Dz.

Black Navy Red Royal



W1630- Style Icon Heavy Canvas Tote Bag - Natural

Natural



W1629C- Two Toned Heavy Canvas Deluxe Tote Bag - Colors

100% Cotton two tone deluxe tote bag. Self fabric handles with a center pocket. Size: 14"W x 16"H x 4"G Imprint: 4"W x 4"H above or on pocket. Case: 6 Dz.

Nat/Blk Nat/Navy Nat/Red Nat/Royal



W1629- Two Toned Heavy Canvas Deluxe Tote Bag - Natural

Natural



W1605C - Heavy Canvas Messenger Bag with Flap - Colors

100% Cotton canvas messenger bag with flap. Size: 13"W x 13"H x 3"G Imprint: 10"W x 7"H. Case: 8 Dz.

Nat/Blk Nat/Navy Nat/Red Nat/Royal

W1605 - Heavy Canvas Messenger Bag with Flap - Natural

Nat/Nat



W1617C- Colored Canvas Shopping Bag with Natural Colored Handles

100% Cotton tote bag with heavy natural web handles and natural piping accent. Size: 14"W x 15"H x 4"G Imprint: 10"W x 9"H. Case 6 Dz.

Nat/Black Nat/Navy Nat/Red Nat/Royal



W1626C- Cotton Canvas Document Bag - Colors

100% Cotton Canvas Document Bag. Heavy reinforced at stress points. Size: 15.5"W x 10"H Imprint: 12"W x 4.5"H. Case: 6 Dz.

Black Navy Red Royal



W1626- Cotton Canvas Document Bag - Natural

Natural



W1604C - Cotton Canvas Pouch with color zipper - Colors

100% Cotton canvas travel kit bag/makeup bag with colored zipper. Size: 9.75"W x 6"H Imprint: 7"W x 4"H. Case: 10 Dz.

Black Navy Red Royal



W1604 - Cotton Canvas Pouch with color zipper - Natural

Natural



Take your items on the go with our...



Black Wheelchair Accessory Bag

#HHWCB > This 13.5”L x 14”W x 4”G bag has 2 adjustable, clip-on/off straps to attach to handles. Two hook/loop straps on the bottom add an extra secure fit. With a zipper closure, it will keep all your must have items safe. The added nylon 5”x1” handle allows for it to be used as a carry bag.

Screen print: 10”W x 6”H imprint area
Template on ApronsEtc.com.

Blank - 48 hours
Printed - 10 Business Days after eproof approval



Healthcare Walker Tote Bag

#4059D > 14”W x 10”H. 14” hook & loop attached nylon handles. 600 denier waterproof polyester.

Stock Color - White, Gray, Red, Navy, Hunter Green, Brown -
Inquire for additional colors.

Screen print: 10.25”W x 4.25”H imprint area.
Template on ApronsEtc.com.

Blank - 10 business days
Printed - 15 Business Days after eproof approval



All you need is rest & relaxation...



Promotional Pillowcase

#4553 > Pillowcase is 20" x 32".
Fits a standard pillow with 130 thread count.

- 50/50 polycotton poplin.
 - Stock Color - White
- 15"W x 15"H imprint area.

Template on ApronsEtc.com.

Blank - 48 Hours
Printed - 10 Business Days Production after eproof approval.



Custom Printed Sleep Masks

#CPEM-LG > These masks are 2-ply with cotton infill inserted for comfort. Wrinkle-resistant polyester on the front side for dye-sub & comfortable stretch polyester for the liner next to your face. Double elastic straps. Single sided printing. Reverse side of mask is black.

- Imprint Area is entire mask.

Template on ApronsEtc.com.

5 Business Days Production after eproof approval.
FREE shipping - 1 U.S. location



#ASV-A - Adult Arm Sleeves

#ASV-Y - Youth Arm Sleeves

180g silk spandex polyester arm sleeves. Cool & comfortable. Provides sun resistant protection. Full color dye sublimated imprint for perfect branding.



Production:
5 business days production after eproof approval

Imprint Area:
Entire arm sleeve.
Templates available on ApronsEtc.com.

FREE SHIPPING - 1 U.S. LOCATION

#CF-ZPWL- Zipper Pocket Wristbands

240g elastic polyester dye sublimated pocket wristband. It features a zipper pocket and is 7.08"W x 3.54"H. Use to store small and lightweight objects while running, cycling or working out.



Production:
5 business days production after eproof approval

Imprint Area:
Entire wristband.
Templates available on ApronsEtc.com.

FREE SHIPPING - 1 U.S. LOCATION

WASH & REUSE FACE MASKS

Custom, Dye-Sub Imprint - 100% Polyester



#CF-3D

Adult Face Mask

3D design for "air space." Individually wrapped. Soft 2-ply polyester. Adjustable ear loops. Made in China.



#CF-Y3D

Youth Face Mask

3D design for "air space." Individually wrapped. Soft 2-ply polyester. Adjustable ear loops. Made in China.



#CF-C3D

Child Face Mask

3D design for "air space." Individually wrapped. Soft 2-ply polyester. Adjustable ear loops. Made in China.

***5 Business Days Production after eproof approval.
FREE shipping - 1 U.S. location for Adult, Youth and Child sizes.***



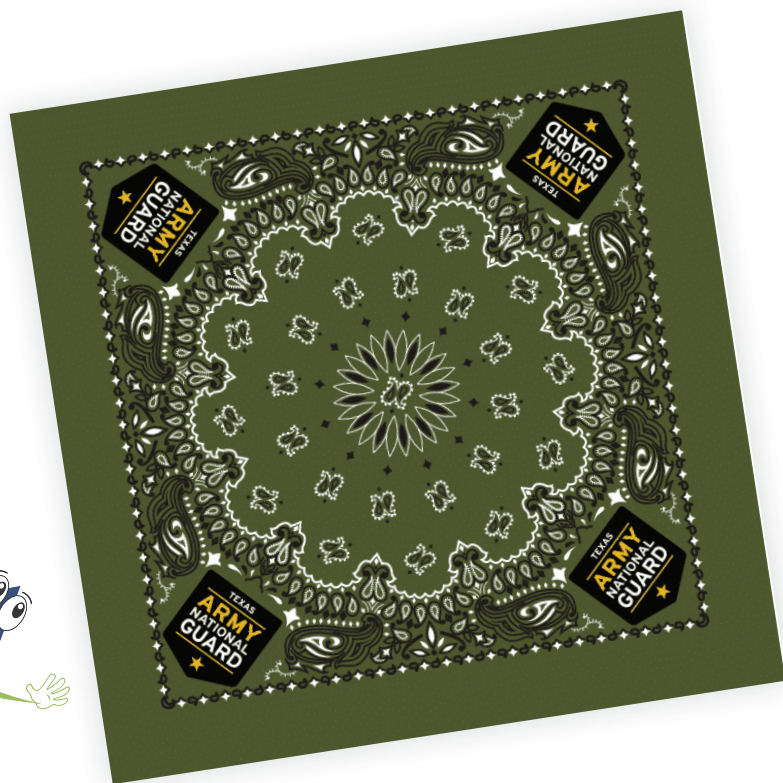
Full Color Stretch Scarf - Bandana

#CF-BD > Full color custom dye-sublimated civilian bandana style face mask. Single ply 100% stretch polyester fabric. 21.5" x 21.5". Individually bagged.

FREE SHIPPING - 1 U.S. LOCATION

Printed: 12 Business Days after eproof approval.

Imprint Area: 21.5"W x 21.5"H. Template available on ApronsEtc.com.



Screen Printed Bandanas - 100% Cotton

#4500-C > 22" x 22" Bandana.

#4503-C > 22" x 22" x 29" Triangle Bandana.

Blank: 48 Hours

Printed: 10 Business Days after eproof approval.

Imprint Area: 15"W x 15"H screen print

#4500-C
Turquoise



Must be ordered in 12 pc. (Dozen) lots.



#4503-C
Royal

- | | | |
|---------------------------------------------------------------------------------------|---------------------------------------------------------------------------------------|---------------------------------------------------------------------------------------|
|  |  |  |
| Black | White | Natural |
|  |  |  |
| Bright Yellow
PMS 108 | Red
PMS 199 | Charcoal Grey
PMS 430 |
|  |  |  |
| Teal
PMS 322 | Wine
PMS 209 | Athletic Gold
PMS 135 |
|  |  |  |
| Lavender
PMS 264 | Orange
PMS 165 | Dark Purple
PMS 268 |
|  |  |  |
| Light Pink
PMS 210 | Royal
PMS 286 | Navy
PMS 289 |
|  |  |  |
| Kelly
PMS 355 | Forest
PMS 342 | Light Blue
PMS 545 |
|  |  |  |
| Columbia Blue
PMS 284 | Turquoise
PMS 311 | Cocoa Brown
PMS 476 |
|  |  | |
| Lime Green
PMS 361 | Hot Pink
PMS 212 | |





PPAI #110868 ASI #36558 SAGE #50091

On the Road with

ETC GUY



#ETCGUY
ApronsEtc.com

FOLLOW US:



SCAN ME



SCAN ME



SCAN ME