

American Zebra Line

2021 ALL YEAR PROMOTIONS

PPAI 111698

UPICAMZEBRA

ASI 35745

SAGE 50724



FRIO SOCK™

\$.65(R)

Item #FSK

100+ Pieces

Holds 12oz. Can
Item Size: 4"H x 4"W
Imprint Area:
3½" x 3½" Sides
1¾" Bottom

26 High Density
Scuba Foam
Colors - Add \$.15(V)
for Camo Tan &
Camo Green

MADE IN THE 



ECONO FRIO SOCK™

\$.51(R)

Item #EFSK

100+ Pieces

Holds 12oz. Can
Item Size: 4"H x 4"W
Imprint Area:
3½" x 3½" Sides
1¾" Bottom

24 Low Density
Scuba Foam
Colors - Lt Pink, Lt
Brown, Camo Not
Offered

MADE IN THE 



HANDI SCUBA WRAP

\$.61(R)

Item #HSW

100+ Pieces

Fits 12oz. Can
No Bottom
Item Size: 3¾"H x 8"W
Imprint Area:
3½" x 7½" Wrap

26 High Density
Scuba Foam
Colors - Add \$.15(V)
for Camo Tan & Camo
Green

MADE IN THE 



NEOPRENE SOCK™

\$1.15(R)

Item #NPSK

100+ Pieces

Holds 12oz. Can
Item Size: 4"H x 4"W
Imprint Area: 3" x
2 7/8" Sides, 1¾"
Bottom

43 Neoprene
Colors - Add \$.15(V)
for Spring & Fall
Camo

MADE IN THE 



2021 ALL YEAR PROMOTIONS

SLIM FRIO SOCK™

\$.87 (R)

Item #SLFSK
100+ Pieces

Holds Slim 12oz. Can
Item Size: 5"H x
4½"W

Imprint Area:
4¾" x 2 7/8" Sides
2" Bottom

26 High Density
Scuba Foam
Colors - Add \$.15(V)
for Camo Tan &
Camo Green



MADE IN THE 

PUB GLASS FRIO SOCK™

\$1.47 (R)

Item #PGFSK
100+ Pieces

Holds 16oz. Pint
Glass

Item Size:
4"H x 4"W

Imprint Area:
3½" x 3½" Sides
1¾" Bottom

26 High Density
Scuba Foam
Colors - Add \$.15(V)
for Camo Tan &
Camo Green



MADE IN THE 

CIRCLES OF ADVERTISING™

\$.82 (R)

Item #COA
100+ Pieces

Holds 12oz. Can
Item Size: 4"H x
4"W

Imprint Area:
3½" Circle,
both sides
1¾" Bottom

26 High Density
Scuba Foam
Colors - Add
\$.15(V) for Camo
Tan & Camo
Green



MADE IN THE 

CRAZY FRIO™ BALL

\$.82 (R)

Item #CF-BALL
100+ Pieces

Holds 12oz. Can
Item Size: 4"H x 4"W

Imprint Area:
3½" x 3½" Sides
1¾" Bottom

26 High Density
Scuba Foam
Colors - Add \$.15(V)
for Camo Tan &
Camo Green



MADE IN THE 

2021 ALL YEAR PROMOTIONS

SCUBA ZIPPER BOTTLE HOLDER \$1.98(R)

Item #SZB
100+ Pieces

Holds Standard 12oz.
Long Neck Bottle
Item Size: 7½"H x 3¾"W
Imprint Area:
2 1/8" x 2 7/8" Zipper
Side
4" x 2 7/8" Back
2" Bottom

26 High Density
Scuba Foam
Colors - Add \$.15(V) for
Camo Tan & Camo Green



MADE IN THE 

NEOPRENE ZIPPER BOTTLE HOLDER \$2.64(R)

Item #NPZB
100+ Pieces

Holds Standard 12oz.
Long Neck Bottle
Item Size: 7½"H x 3¾"W
Imprint Area:
2 1/8" x 2 7/8" Zipper
Side
3" x 2 7/8" Back
1¾" Bottom

43 Neoprene
Colors - Add \$.15(V) for
Spring & Fall Camo



LONG NECK BOTTLE SLEEVE \$1.09(R)

Item #LBS
100+ Pieces

Fits Standard 12oz.
Long Neck Bottle
Item Size: 7½"H x
3¾"W
Imprint Area:
3" x 3" Sides

26 High Density
Scuba Foam
Colors - Add \$.15(V)
for Camo Tan & Camo
Green



MADE IN THE 

BOTTLE FRIO SOCK™ \$.89(R)

Item #BFSK
100+ Pieces

Holds Standard 12oz.
Long Neck Bottle
Item Size: 7½"H x 3¾"W
Imprint Area:
3" x 3" Side
1¾" Bottom

26 High Density
Scuba Foam
Colors - Add \$.15(V) for
Camo Tan & Camo Green



MADE IN THE 

2021 ALL YEAR PROMOTIONS

SLIM WINE BOTTLE WRAP

\$2.95(R)

Item #WBSL
25 Pieces

Fits Most Riesling/
Alsace Wine Bottles
(9½" cir.)
Item Size:
7¾"H x 4¾"W
Imprint Area:
5¼" x 3½" Sides

26 High Density
Scuba Foam
Colors - Add \$.15(V)
for Camo Tan &
Camo Green



MADE IN THE 

COFFEE WRAP™

\$.53(R)

Item #CW
100+ Pieces

Holds 16oz (Grande)
Paper or Foam Cup
Item Size: 3"H x 4 5/8"W
Imprint Area: 2" x 4"
1 Color Front Imprint
Only

26 High Density
Scuba Foam
Colors - Add \$.15(V) for
Camo Tan & Camo Green



We also offer Paper Cups!
See Page 13.

MADE IN THE 

16oz. ARCTIC SLEEVE™

\$1.32(R)

Item #AS16
100+ Pieces

Holds 16oz. Tall Can
or 16oz. Water Bottle
Item Size:
5¾"H x 4¼"W
Imprint Area:
4" x 3¾" Sides
1 7/8" Bottom

26 High Density
Scuba Foam
Colors - Add \$.15(V)
for Camo Tan &
Camo Green



MADE IN THE 

25oz. BIG CAN SLEEVE

\$1.71(R)

Item #BC25
100+ Pieces

Holds 25oz. Tall Can
Item Size:
6 7/8" H X 3 ¾" W
Imprint Area:
3½ x 6" Sides
2" Bottom

26 High Density
Scuba Foam
Colors - Add \$.15(V)
for Camo Tan &
Camo Green



MADE IN THE 

AMERICAN ZEBRA LINE

DYE SUBLIMATION 4 COLOR PROCESS



#FSK4CP
Minimum 100
\$1.03(R)



#NPSK4CP
Minimum 100
\$1.63(R)



#SLFSK4CP
Minimum 100
\$1.25(R)



#HSW4CP
Minimum 100
\$.97(R)



#CF-RIBB4CP
Minimum 100
\$1.25(R)



#CF-HAT4CP
Minimum 100
\$1.25(R)



#CW4CP
Minimum 100
\$.89(R)



#BFSK4CP
Minimum 100
\$1.55(R)



#CF-BALL4CP
Minimum 100
\$1.25(R)



#COA4CP
Minimum 100
\$1.25(R)

MADE IN THE 

AMERICAN ZEBRA LINE

DYE SUBLIMATION 4 COLOR PROCESS



#PGFSK4CP
Minimum 100
\$1.80(R)



#NPZB4CP
Minimum 100
\$2.99(R)



#LBS4CP
Minimum 100
\$1.60(R)



#SZB4CP
Minimum 100
\$2.49(R)



#TBFSK4CP
Minimum 100
\$1.89(R)



#PFSK4CP
Minimum 100
\$1.20(R)



#CF-FLAG4CP
Minimum 100
\$1.25(R)



#CF-TROP4CP
Minimum 100
\$1.25(R)



#CF2-CRAW4CP
Minimum 100
\$2.55(R)



#CF-CRAW4CP
Minimum 100
\$1.25(R)

#WBSL4CP
Minimum 25
\$2.65(R)



MADE IN THE



#FL4CP
Minimum 100
\$4.55(R)

2021 ALL YEAR PROMOTIONS

12oz. STADIUM CUP

\$.45_(R)

Item #8112

100+ Pieces

Imprint Area:

2 5/8" X 2 3/4" Side

Item Size: 4"H X 3"W

Solid Colors: White, Red, Blue, Yellow, Kelly Green, Natural

BPA Lead Free - HPDE



MADE IN THE 

16oz. STADIUM CUP

\$.56_(R)

Item #8716

100+ Pieces

Imprint Area:

2 5/8" X 3 1/4" Sides

Item Size:

4 3/8"H X 3 1/2"W

Solid Colors: White, Red, Royal, Black, Yellow, Green, Orange, Maroon, Purple, Navy
Trans. Colors: Red, Blue, Green, Purple, Clear
Neon Colors: Lime, Pink, Orange

BPA Lead Free - HPDE



MADE IN THE 

22oz. STADIUM CUP

\$.60_(R)

Item #8722

100+ Pieces

Imprint Area:

3 1/4" X 3 1/2" Sides

Item Size:

5 3/4"H X 3 5/8"W

Solid Colors: White, Red, Royal, Black, Yellow, Green, Orange, Maroon, Purple, Navy
Trans. Colors: Red, Blue, Green, Purple, Clear
Neon Colors: Lime, Pink, Orange

BPA Lead Free - HPDE



MADE IN THE 

16oz. THE PARTY CUP

\$2.19_(R)

Item #TPC16

100+ Pieces

Sold in Increments of 100

Imprint Area: 2 1/2" X 3"

Sides

Item Size: 5 1/2"H X 3 3/4"W

Solid Colors: Red, Blue, White, Black, Green, Yellow, Navy, Purple
Neon Colors: Lime, Pink, Orange

*Optional Drink Logic Lid: White - \$.42(V)
Sold Separately

BPA Lead Free - HPDE



MADE IN THE 

2021 ALL YEAR PROMOTIONS

20oz. BIKE/FITNESS BOTTLE

\$1.12^(R)

Item #BIK20W

100+ Pieces

Imprint Area:

2 7/8" X 2 7/8" Sides

Item Size: 8"H X 2 3/4"W

Color: White Bottle Only

Lids: 13 Stock Colors

BPA Lead Free - HPDE



MADE IN THE 



20oz. SPORTS BOTTLE

\$1.03^(R)

Item #BSB20P

100+ Pieces

Imprint Area:

2 7/8" X 2 7/8" Sides

Item Size: 8"H X 2 3/4"W

Color: White Bottle Only

Lids (53mm): 10 Stock Colors

BPA Lead Free - HPDE



MADE IN THE 



20oz. BIKE/FITNESS BOTTLE

\$1.09^(R)

Item #BIK20FT

100+ Pieces

Imprint Area:

2 7/8" X 2 7/8" Sides

Item Size: 8"H X 2 3/4"W

Color: Natural Frost Bottle Only

Lids: 13 Stock Colors

BPA Lead Free - HPDE



MADE IN THE 



24oz. BIKE/FITNESS BOTTLE

\$1.20^(R)

Item #BIK24W

100+ Pieces

Imprint Area:

3 1/4" X 3" Sides

Item Size: 9 1/4"H X 2 3/4"W

Color: White Bottle Only

Lids: 13 Stock Colors

BPA Lead Free - HPDE



MADE IN THE 



2021 ALL YEAR PROMOTIONS

20oz. BIKE/FITNESS BOTTLE

\$1.40^(R)

Item #BIK20TR

100+ Pieces

Imprint Area:

2 7/8" X 2 7/8" Sides

Item Size: 8"H X 2 3/4"W

Bottle & Lid Colors, Translucent:

Red, Blue, Green, Smoke (Black Lid), Clear

BPA Lead Free - PET



MADE IN THE 



24oz. BIKE/FITNESS BOTTLE

\$1.47^(R)

Item #BIK24TR

100+ Pieces

Imprint Area:

3 1/4" X 3" Sides

Item Size: 9 1/4"H X 2 3/4"W

Bottle & Lid Colors, Translucent:

Red, Blue, Green, Purple, Smoke (Black Lid), Clear

BPA Lead Free - PET



MADE IN THE 



16oz. BOLERO TUMBLER™

\$1.89^(R)

Item #BT16

120+ Pieces

Sold in Increments of 60

Imprint Area: 3" X 3" Sides

Item Size: 9 3/4"H X 3 5/8"W

Stock Translucent Colors:

Red, Blue, Purple, Smoke, Orange, Spring Green, Lime Green, Icee Clear

Double Wall Polypropylene

BPA Lead Free - PET

MADE IN THE 



16oz. INFINITY TUMBLER™

\$2.98^(R)

Item #3800

144+ Pieces

Sold in Increments of 48

Imprint Area: 3" X 4 1/2" Sides

Item Size: 7 3/8"H X 3 1/2"W

Stock Colors: White, Black, Granite, Thunderbolt Blue, Harvest Green, Silver, Metallic Red, Pink

Slider Lid: add \$.15(V)

BPA Lead Free - PET

FOB-IN - Lead 10-business days from final response (Conditional).

MADE IN THE 



2021 ALL YEAR PROMOTIONS

16oz. OMEGA MUG

\$3.15(R)

Item #3000
144+ Pieces

Sold in Increments of 48

Imprint Area:

2 1/8" X 2 1/8" Sides
Item Size: 5 3/4"H X 5"W

Stock Colors: White, Black, Red, Granite, Thunderbolt Blue, Green, Silver, Pink, Lime, Yellow
Slider Lid: Black

BPA Lead Free

FOB-IN - Lead 10-business days from final response (Conditional).

MADE IN THE 



21oz. SPORTSTER MUG™

\$3.45(R)

Item #3200
144+ Pieces

Sold in Increments of 48

Imprint Area:

2 1/8" X 2" Sides
Item Size: 7 3/8"H X 3 1/2"W

Stock Colors: White, Black, Granite, Thunderbolt Blue, Harvest Green, Silver, Metallic Red
Slider Lid: Black

BPA Lead Free

FOB-IN - Lead 10-business days from final response (Conditional).

MADE IN THE 



16oz. LOWRIDER MUG™

\$3.83(R)

Item #3600
144+ Pieces

Sold in Increments of 36

Imprint Area:

1 1/4" X 2 7/8" Sides
Item Size: 4"H X 4"W

Stock Colors:

White, Black, Granite, Lime, Thunderbolt Blue, Harvest Green, Silver, Metallic Red, Magenta
Slider Lid: Black

BPA Lead Free

FOB-IN - Lead 10-business days from final response (Conditional).

MADE IN THE 



22oz. INSULATED THERMAL MUG™

\$3.99(R)

Item #7522
144+ Pieces

Sold in Increments of 24

Imprint Area:

4" X 2 5/8" Sides
Item Size: 6 7/8"H X 4 1/4"W

Stock Colors: White, Black, Granite, Thunderbolt Blue, Harvest Green, Lime, Red, Purple, Burnt Orange, Grey, Pink
Stock Lid Colors: White, Black, Granite, Red, Clear, Thunderbolt Blue, Pearl White

BPA Lead Free

FOB-IN - Lead 10-business days from final response (Conditional).

MADE IN THE 



2021 ALL YEAR PROMOTIONS

34oz. INSULATED THERMAL MUG™

\$4.49_(R)

Item #7534

144+ Pieces

Sold in Increments of 24

Imprint Area:

4" X 3½" Sides*

Item Size: 7¼"H X 4 7/8"W



Stock Colors: White, Granite, Red, Thunderbolt Blue, Black

Stock Lid Colors: White, Red, Thunderbolt Blue

BPA Lead Free

FOB-IN - Lead 10-business days from final response (Conditional).

MADE IN THE 

*Screen Charge: \$50.00(V) per Color

9½" FLYER

\$1.06_(R)

Item #ZZF

100+ Pieces

Sold in Increments of 100

Imprint Area:

5" Diameter Circle

Item Size:

9½" Diameter



Stock Solid Colors: Red, Blue, Yellow, Black, White, Purple, Kelly Green

Stock Trans Colors: Red, Blue, Green, Purple

Stock Neon Colors: Pink, Orange, Lime

BPA Lead Free

MADE IN THE 

PLASTIC SCHOOL POUCH

\$.84_(R)

Item #SPOUCH

100+ Pieces

Imprint Area:

2¾"H X 8"W

Item Size:

6¼"H X 9¼"W



Trim Colors: Blue, Black, Red, Yellow, White

Pouch: Natural Frost



10" FOLDABLE FLYER W/ POUCH

\$1.09_(R)

Item #FND001

100+ Pieces

1-Color 1-Side: Disc

Must fit within 7½" Diameter

Add \$0.30(V) per Piece & 2nd Screen for Pouch print: 2¼" x 2½"

Item Colors w/ Matching Pouch:

Red, Blue, Green, Purple, Yellow, White



MADE IN THE 

2021 ALL YEAR PROMOTIONS

HOUSE CHIP CLIP

\$1.00_(R)

Item #CC01
100+ Pieces

1-Color 1-Side - 2nd
Location \$0.30(V) &
2nd Screen
Top Imprint Area:
1" Square
Bar Imprint Area:
½" H x 3" W
Item Size:
2½" H x 4" W



Item Colors: Translucent Blue,
Translucent Red, Solid White



Due to the listed shown imprint areas
logo restrictions apply. Call Factory.

ROUND CHIP CLIP

\$1.00_(R)

Item #CC02
100+ Pieces

1-Color 1-Side - 2nd
Location \$0.30(V) &
2nd Screen
1 Color Imprint
Top Imprint Area:
½" Circle
Bar Imprint Area:
½" H x 3" W
Item Size:
2" H x 4" W



Item Colors: Translucent Blue,
Translucent Red, Solid White



Due to the listed shown imprint areas
logo restrictions apply. Call Factory.

COLOSSAL MAGNET CLIP

\$1.15_(R)

Item #MCMAGNA
100+ Pieces

1 Color Imprint
Imprint Area:
1½" X 1 7/8"
Item Size:
3"H X 2"W



Item Colors: Translucent
Purple, Blue, Red, Green,
Solid White

Due to the listed shown imprint areas
logo restrictions apply. Call Factory.

HOUSE MAGNET CLIP

\$1.15_(R)

Item #MCHOUSE
100+ Pieces

1 Color Imprint
Imprint Area:
1 1/8" X 1 7/8"
Item Size:
2"H X 2"W



Item Colors:
Translucent Red, Green,
Blue, Smoke, Solid White

Due to the listed shown imprint areas
logo restrictions apply. Call Factory.

2021 ALL YEAR PROMOTIONS

APPLE MAGNET CLIP

\$1.15(R)

Item #MCAPPLE
100+ Pieces

Imprint Area:

1¼" X 2" Taper 1 Side

Item Size:

2¾"H X 2¾"W

Item Colors:

Translucent Red, Green



Due to the listed shown imprint areas
logo restrictions apply. Call Factory.

12oz. WHITE PAPER CUP

\$.70(R)

Item #12P
100+ Pieces

Imprint Area:

2¾" X 3" 1 Side

Item Size:

4½"H, Top 3½"W
Bottom 2½"W



Lids Sold Separately.
White Cappuccino Lid for
Paper Cups #CAPP - \$.15(R)

16oz. WHITE PAPER CUP

\$.75(R)

Item #16P
100+ Pieces

Imprint Area:

3" X 3" 1 Side

Item Size:

5¼"H, Top 3½"W
Bottom 2½"W

Item Color:

White Only



Lids Sold Separately.
White Cappuccino Lid for
Paper Cups #CAPP - \$.15(R)

12oz. CLEAR PLASTIC "FLEXIBLE" COLD CUP

\$.41(R)

Item #12PC
100+ Pieces

Imprint Area:

1 7/8" X 2¾" Sides

Item Size:

4¼"H, Top 3¾"W
Bottom 2½"W



2021 ALL YEAR PROMOTIONS

**16oz. CLEAR PLASTIC
"FLEXIBLE" COLD CUP**

\$.48_(R)

**Item #16PC
100+ Pieces**

**Imprint Area:
1¼" X 3" 1 Side
Item Size:
4¾"H, Top 3¾"W
Bottom 2½"W**



**9oz. CLEAR PLASTIC
"FLEXIBLE" COLD CUP**

\$.39_(R)

**Item #9PC
100+ Pieces**

**Imprint Area:
1¼" X 2½" 1 Side
Item Size:
3"H, Top 3¾"W
Bottom 2¼"W**



12oz. WHITE STYROFOAM CUP

\$.34_(R)

**Item #FC12
100+ Pieces**

**Imprint Area:
2¾" X 3" Sides
Item Size:
4¼"H, Top 3½"W
Bottom 2"W**



14oz. WHITE STYROFOAM CUP

\$.36_(R)

**Item #FC14
100+ Pieces**

**Imprint Area:
4¾" X 3" Sides
Item Size:
4¾"H, Top 3¾"W
Bottom 2½"W**



2021 ALL YEAR PROMOTIONS

16oz. WHITE STYROFOAM CUP

\$.38_(R)

Item #FC16
100+ Pieces

Imprint Area:
2 7/8" X 3 3/8" Sides
Item Size:
5 1/2"H, Top 3 3/4"W
Bottom 2 1/2"W



20oz. WHITE STYROFOAM CUP

\$.44_(R)

Item #FC20
100+ Pieces

Imprint Area:
3 1/2" X 3 1/2" Sides
Item Size:
5 1/4"H, Top 3 1/2"W
Bottom 2 1/2"W



24oz. WHITE STYROFOAM CUP

\$.47_(R)

Item #FC24
100+ Pieces

Imprint Area:
4" X 3 1/2" Sides
Item Size:
7"H, Top 3 3/4"W
Bottom 2 1/2"W



32oz. WHITE STYROFOAM CUP

\$.49_(R)

Item #FC32
100+ Pieces

Imprint Area:
4" X 4" Sides
Item Size:
6 3/4"H, Top 4 1/2"W
Bottom 3"W



2021 ALL YEAR PROMOTIONS

BEVERAGE NAPKINS

\$.53_(R)

Item #3PBN
100+ Pieces



Imprint Area:
2½" X 2½" 1 Side
Item Size:
4¾" X 4¾" Folded

Item Colors: White, Black,
Silver, Ivory, Red, Magenta,
Cobalt Blue, Burgundy

LUNCHEON NAPKINS

\$.56_(R)

Item #3PLN
100+ Pieces



Imprint Area:
3" X 3" 1 Side
Item Size:
6½" X 6½" Folded

Item Colors: White, Black,
Silver, Ivory, Red, Magenta,
Cobalt Blue, Burgundy

DINNER NAPKINS

\$.62_(R)

Item #2PDN
100+ Pieces

Imprint Area:
3" X 3" 1 Side
Item Size:
8½" X 4½" Rectangle

Item Colors: White, Black,
Silver, Ivory, Red, Magenta,
Cobalt Blue, Burgundy



WHITE GUEST TOWEL

\$.65_(R)

Item #5SGT
100+ Pieces

Imprint Area:
3" X 3" 1 Side
Item Size:
8" X 4" Rectangle

•••••
skindeep
MED SPA

AMERICAN ZEBRA LINE

Images of actual fabric samples used.

FABRICS

Listed PMS Colors are close tonal match, NOT EXACT.

26 Available Scuba Foam Colors



43 Available Neoprene Colors



AZIL

4CP DYE SUBLIMATION
BACKGROUNDS
 AVAILABLE FOR ANY 4CP PRODUCT



Images of actual dye sublimated fabric used.

Solid Colors

Listed PMS colors are keyed into digital file yet hue may vary.

 NAVY PMS 2768c	 COBALT PMS 286c	 TEAL PMS 314c	 ROYAL PMS 285c	 NEON BLUE PMS 640u	 SKY BLUE PMS 278c	 TURQUOISE PMS 323c	 AQUA PMS 319u	 PISTACHIO PMS 578u
 LIME PMS 359u	 K. GREEN PMS 2257c	 F. GREEN PMS 555c	 DK. BROWN PMS 476c	 LT. BROWN PMS 1615c	 B. ORANGE PMS 160u	 TANGERINE PMS 2020c	 ORANGE PMS 165c	 YELLOW PMS 3945c
 LT. PINK PMS 196c	 PINK PMS 2037u	 HOT PINK PMS 806c	 RED PMS 186c	 CRIMSON PMS 7627c	 MAGENTA PMS 227c	 MAROON PMS 504c	 BURGUNDY PMS 2056c	 PURPLE PMS 2613c
 LAVENDER PMS 2635u	 ASH PMS 432c	 BLACK	 GREY PMS Cool Grey C	 LT. GREY PMS 422c	 KHAKI PMS 7500u	 LEOPARD		

Full-Coverage Patterns



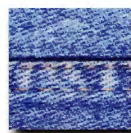
TROPICAL LEAVES



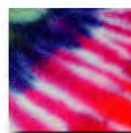
MAGIC NIGHTS



CLOVERS



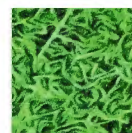
DENIM



TYE-DYE



MARBLE HIVE



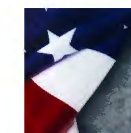
GRASS



BURLAP



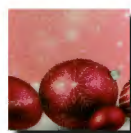
MEX BLANKET



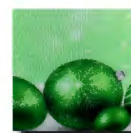
FLAG NEO



CANDY HEARTS



XMAS ORNAMENTS; RED, GREEN, BLUE



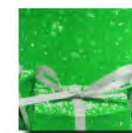
XMAS GIFTS; RED, GREEN



GENDER REVEAL



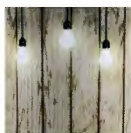
AUTUMN



NEW YEAR'S EVE



WOOD



WOOD LIGHTS



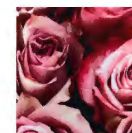
WOOD LIGHTS DK



BIRTHDAY



BALLOONS



PINK ROSES



RED ROSES



GREEN CAMO



BROWN CAMO

2021 AZL GENERAL INFORMATION

ORDER & ART SUBMITTAL: Please include your PO# in the subject line. Submit both Complete purchase order form and vector art together to sales@americanzebra.net - If you do not get an email confirmation within 24-business hours, please call the factory. **AZL will not be responsible for electronic or fax transmittal failure.**

PURCHASE ORDER INFORMATION: To ensure the most effective processing of your order, include the following - PO number, Company Name, and billing address. Your contact information, including name, phone number, fax number, and email address. Correct Item Code, Color, and Quantity desired, Imprint color with PMS-Number for reference. Ship-To address, Shipping method (Ground is our default). In-Hands date (if applicable).

ORDER ACKNOWLEDGEMENT: You will receive an email confirmation for both order and art. Our customer service team will contact you with any missing information to complete your order once reviewed.

STANDARD LEAD TIME: 7-15 business days from final proof approval. Factory authorization is required before submitting a rush order. Call factory for specifics.

INK COLOR with PMS NUMBER: We do not offer PMS-Match. We ask you to provide a PMS-Number for reference only. However, only near tonal values can be achieved and will vary from original and repeat orders. Tonal values will not appear accurate on dark products. We suggest a pre-production proof if the ink color is critical, offered at \$50.00(V) plus applicable screen charges. AZL assumes no responsibility for incorrect tonal colors.

ART ACCEPTANCE for SCREEN PRINTING AS FOLLOWS: Adobe Illustrator (AI), Portable Document Format (PDF), Encapsulated Postscript (EPS), Scalable Vector Graphic (SVG), and Corel Draw (CDR 18.0 or earlier). Please make sure all fonts are converted to curves/outlines to ensure your imprint will appear as intended. We do not accept Office documents (.doc, .xls) nor bitmap files such as JPEG, GIF, TIFF, PNG, or BMP as usable art. Vector files are required for Screen-Printing.

Art files must be able to be broken apart and edited. Bitmap images embedded within the above file formats will not be accepted. Vector files are small (most under 1MB) and can be easily emailed. If you zoom in and see pixelation, it is NOT in vector format.

Even if your product imprint color is WHITE, please make sure your art is sent in BLACK. Files sent in white appear empty when opened, making it easy to miss details. Please make sure all fonts are converted to curves/outlines to ensure your imprint will appear as intended.

ART ACCEPTANCE for DYE SUBLIMATION (4CP) AS FOLLOWS: Adobe Photoshop (PSD), Adobe Illustrator (AI), Portable Document Format (PDF), Tag Image File Format (TIFF), Encapsulated Postscript (EPS), and Corel Draw (CDR 18.0 or earlier). Art Must be submitted ready to use on the desired template and must include the background color, or you may select from our stock Background Patterns shown on page 49 of our digital catalog.

We prefer art files to have layers, ESPECIALLY if the background is highly detailed or patterned. TIFF supports layers. We will also accept JPEG, PNG, and GIF if they are large enough. The resolution must be at least 300 dpi (dots per inch) scaled to imprint size. All text must be rasterized to ensure it will print as intended.

Due to complexity, some multi-color images may not be possible. American Zebra will determine if a 2-side print will be possible and whether the art submitted is acceptable.

INK CHANGE: Offered at \$20.00(V) per change during a run.

ASSORT PRODUCT COLORS WITHIN AN ORDER: Scuba and Neoprene \$3.00(Z) each. 50 pieces per color minimum. Stadium cups -\$10.00(V) each. 100 pieces per color minimum. Items sold in case increments will require full case purchases.

CHANGES OR CANCELLATION: Once a Sales-Order-Specification is emailed, the items are either ordered, pulled, flamed, or die-cut. Therefore, any changes or cancellations from that point forward will incur a 20% restocking fee. Partial/Completed orders cannot be changed or cancelled. All changes must be submitted in writing via email and confirmed by phone.

REPEAT ORDERS: No Screen charge on exact art and item if the order is placed within 1-Year of the invoice date. Over 1-Year will incur a \$30.00(V) Repeat-Screen. Over 2-Years will be considered new and will require new art submittal and a \$50.00(V) Screen charge per color will apply. *All FOB-IN Repeat orders will incur a \$40.00(V) Repeat Screen charge per color.*

MULTI-COLOR/FOAM ITEMS: Ink color cannot touch at any point. We screen-print a max of two (2) spot colors. Please allow for movement up to 1/8" in any direction. Due to complexity, some multi-color images may not be possible.

DIGITAL PROOFS: Black & White art layout proofs are emailed for every order. Color Proofs offered at \$10.00 net each. Orders will not go into production until art approval is received. American Zebra is not responsible for incorrect art approval. Delay in approval will result in production delay.

FREIGHT ESTIMATES: Accepted via email sales@americanzebra.net.

CUSTOMER PICK-UP ORDERS: A team member will reach out via phone or email as soon as your order is complete and will advise the pickup hours.

CO-PACKING: We do not offer "co-packing" or shipping orders together. Jobs are separated by artwork and products and travel through the production process separately and will ship individually.

DROP SHIP: \$10.00(Z) per additional location(s) plus \$3.00(Z) Handling fee per case. The dropship list, including typed addresses and appropriate case quantities, must accompany the original purchase order.

-All drop shipments must be case increments. Changes are not possible if the order has been packed.

SHIPPING: Your order will ship UPS or FED-EX Ground unless advised otherwise; to guarantee a particular carrier, a UPS or Fed-EX shipper account number is required, a \$3.00(Z) handling/service fee per case will apply. Your orders must indicate if the delivery address is Commercial or Residential. Residential delivery is subject to additional charges. Both UPS and FED-EX utilize dimensional weight and cubic densities. Shipping weights listed on the digital catalog are estimates only; real weights may vary. International shipments must include appropriate documentation, brokerage along with UPS shipper number. AZL is not responsible for any Duties, Tariffs, or any other export-fees. Claims for damages, shortages, etc., must be placed with the carrier. Please retain original cartons and contents for inspection. The factory does not guarantee the orders' arrival. If the product is shipped per the schedule and arrives late due to shipper error, you are still required to pay for the order, less any refunds received from the shipper. Some orders may ship from alternative locations. The factory has no control of delivery after being transferred to the shipper.

WARRANTY: American Zebra warrants its products and decoration to be of good quality. Defective items will be replaced at no charge when returned within five (5) days of receipt. Our liability is limited to the invoice amount on order. Unauthorized returns will be refused and returned to the sender. Merchandise must be available to be returned for any credit or replacement.

ORDER QUANTITIES: Orders are generally shipped in exact quantities. Due to the decoration process's nature, orders shipped 5% under will be considered complete.

PRODUCT COLORS AND SHADE VARIANCES: Product colors can vary slightly from one production run to the next. Dark color plastics, by nature, show blemishes that are not noticeable in other colors.

PLASTIC ITEMS SCUFFS AND SCRATCHES: Due to the nature of plastics, scuffs and scratches can be seen on darker colored plastic items. This is unavoidable in the molding and printing process. These marks are not considered a defect and will not be eligible for a credit.

FOAM COLOR & THICKNESS VARIANCE: Due to the laminate surface of these products, Color and Foam consistency will vary within and from order to order; this is considered acceptable and within industry standards.

INK ODOR: All silkscreen promotional products are printed with inks that must evaporate to dry. These vapors may be trapped in the product and cardboard packaging before they have entirely dissipated. Please allow the product to "air out" We will not re-run an order based on this common odor complaint, as it is part of the printing process.

MEASURING THE OUNCE SIZE OF DRINKWARE: We use the industry-standard of measurement; filled to the brim capacity using pure water, give or take an ounce depending on elevation. In short, the higher a cup is from sea level, the less liquid it will hold. A 16-ounce cup in Santa Fe will hold less liquid than a 16-ounce cup in Galveston. American Zebra will not be liable for product size decisions. When in doubt, request a sample; we ask that you provide your UPS or FedEx shipping account number to cover the cost of shipping.

BLANK ORDERS: Call factory for stock availability and lead time. A \$50.00(Z) minimum purchase is required on all blank orders. Item sold in case increments will require full case purchases. We do not accept returns on blank items.

COPYRIGHT/TRADEMARK LAWS: **American Zebra assumes artwork submitted is in full compliance with all laws concerning copyright, trademarks, etc.** By placing these orders, Purchasers agree to hold American Zebra harmless for any damages, cost, or expenses arising under violation of these laws resulting from American Zebra's use of supplied artwork.

RETURNED CHECKS: A \$25.00(Z) charge will be assessed for all returned checks. Accepted methods of replacement payment are Credit Card or Money Order only.

QR-CODES: We do not recommend screen-printing or sublimating QR codes on our products due to the ink consistency. One tiny flaw and the QR code may not work.

WASHING OF PLASTIC: Hand-Wash only with mild, liquid detergent soap. Do not place in dishwasher; avoid using commercial detergents or abrasive cleaners, which will damage the imprint and scratch the surface. Products are not for use in the restaurant environment.

PRICING: We recommend you verify products and pricing before placing an order. Catalog pricing is subject to change without notice. We are not liable for incorrect information on third-party promotional product search engines.

RIGHT TO PROMOTE: Unless specified in writing when the Purchase Order form is submitted, we reserve the right to use any printed item for display and promotion. Some imprints that appear in our literature are products that we have printed; however, their presence does not constitute an endorsement. Images shown on the product sample are not available for print.



Factory authorization is REQUIRED before submitting a 3-Day Rush order. The following must be in-house by 10 AM CST:

1. Complete Purchase order form with proof of factory authorization email.
2. Ready to use Vector art -Detailed art and halftones are *NOT* considered usable art. Typesetting is *NOT* possible on rush orders.
3. Payment status must be current and/or received.
4. Ship Method must be listed on the Purchase Order form.
5. Must include a JPG of the art to compare alongside the submitted Vector file that states "Waive Art Proof."
6. Quantity must not exceed the maximum amount offered on the 3-Day Rush Flyer (below).

**Not complying with the above-listed steps will disqualify your order from 3-Business Day Rush eligibility.*

Available Items & Quantities

(Minimum - Maximum)



#BIK24W - 24oz.
100 - 200 Pieces



#BIK20TR - 20oz.
100 - 200 Pieces



#8722 - 22oz.
100 - 500 Pieces



#8716 - 16oz.
100 - 500 Pieces



#8112 - 12oz.
100 - 500 Pieces



#TPC16
100 - 200 Pieces



#BT16
120 - 180 Pieces



#ZZF
100 - 200 Pieces



#FSK
100 - 500 Pieces



#EFSK
100 - 500 Pieces