

Numo

hi!

OPTIONS

4-5 HOW OUR NEOPRENE STUFF WORKS
6-7 TEXTURES + TREATMENTS 101

ideas

8-13 TRENDS + INSPIRATION
14-23 INDUSTRIES + VERTICALS

WHAT'S NEW?

24-25 NEW STUFF FOR 2017

TEXTURES & TREATMENTS

26-27 SUEDE'ISH
28-29 HEATHERED
30-31 BURLAP & DENIM
32-33 DUPLEX
34-35 4CP BIAS EXPLAINED

BEVERAGE INSULATORS

36-37 MEET THE FAVORITES
38-51 NEOPRENE
52-53 SCUBA
54-55 ZINO

lunch & recess

56-60 LUNCH BAGS
61 WELLNESS
63 DUALS
64 KOOLER BAGS
66-67 EVERY DAY

TECH

68 GET ORGANIZED
69 TECH TACO
70-73 TECH STORAGE
74-77 SLEEVES

drinkware

78-85 MUGS
86-89 GLASSWARE

BANK BAG\$

91 MINI BANK BAGS
92 EXPANDED VINYL
93 LAMINATED NYLON

INFO ABOUT STUFF

94-97 COLOR CHARTS
98-99 ORDER INFORMATION
100 WHAT IS A NUMONIAN?

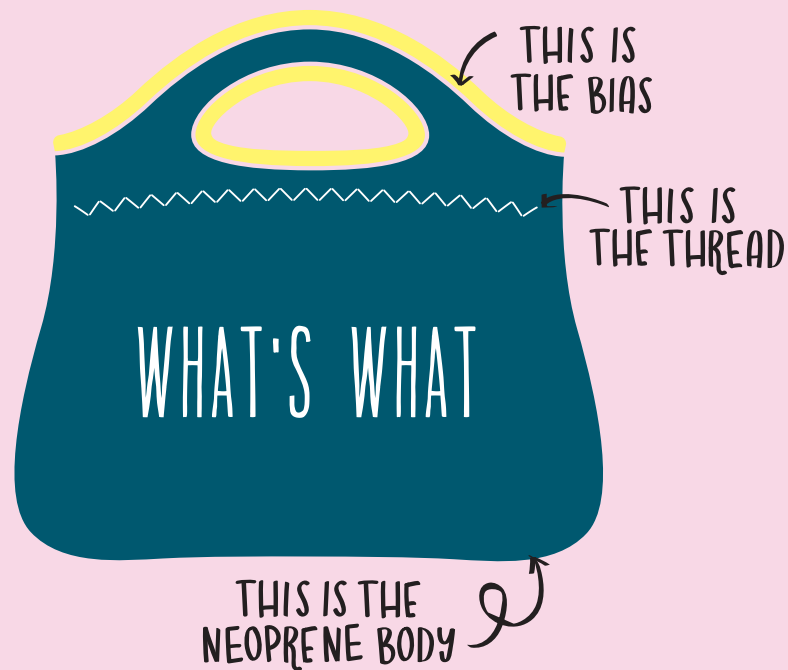
HOW OUR NEOPRENE STUFF WORKS

NOW LET'S BUILD A LIAM.
ONE OF OUR FAVORITE
CAN INSULATORS.

Our neoprene items are made to order. Yup, every order ... even if you want "all royal" - still made from scratch out of raw materials.

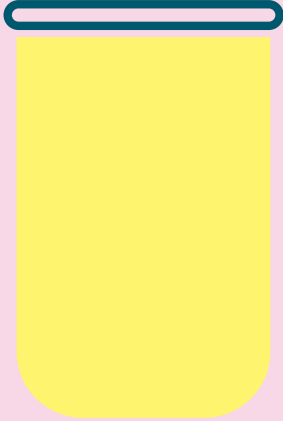
SO... HOW DOES THAT... WORK?

SOME ITEMS HAVE 2 COMPONENTS, SOME HAVE MORE. YOU'LL ALWAYS HAVE A "BODY" MADE OF NEOPRENE, YOU'LL ALWAYS HAVE "THREAD" AND SOMETIMES YOU'LL HAVE "BIAS"



OPTIONS ON OPTIONS ON OPTIONS

1. PICK YOUR NEOPRENE BODY



SOLIDS
56 SOLID NEOPRENE COLORS



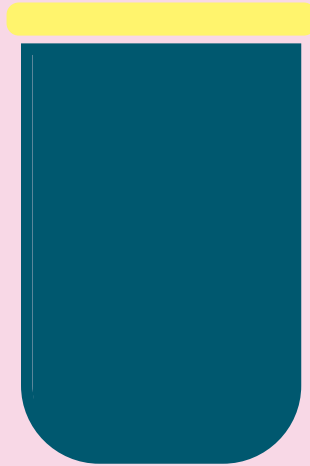
TEXTURES
6 DIFFERENT TEXTURED NEOPRENE STYLES.



TREATMENTS
FOUR COLOR PROCESS (4CP)
AND DUPLEX.

PSSST...TEXTURE & TREATMENT DEETS
ON NEXT PAGE.

2. TIME FOR BIAS



SOLIDS
26 SOLID COLORS

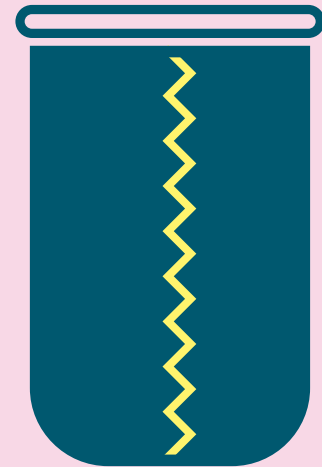


PATTERNS
SEVERAL STOCK 4CP PATTERNS TO CHOOSE
FROM, LIKE: MARBLE, PLAID, & RAINBOW



CUSTOM
CUSTOMIZE THE COLORS ON ONE OF
OUR STOCK DESIGNS, OR DESIGN YOUR
VERY OWN 4CP BIAS!

3. THREAD COLOR



WE HAVE 19 THREAD COLORS.
CHOOSE ONE TO MATCH, OR
CREATE A CONTRASTING LOOK.

WHAT DO YOU MEAN,
"TEXTURES & TREATMENTS?"

NEOPRENE TEXTURES

SUEDE'ISH



BURLAP



HEATHERED
JERSEY-KNIT



DENIM



UPGRADE YOUR NEOPRENE FROM A SOLID TO A TEXTURE FOR A 25% UPCHARGE.

NEOPRENE TREATMENTS

4CP



FOUR COLOR
PROCESS

DUPLEX



4CP ON THE EXTERIOR
AND INTERIOR

SOME
ITEMS ARE
REVERSIBLE

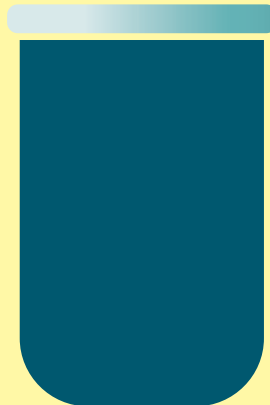
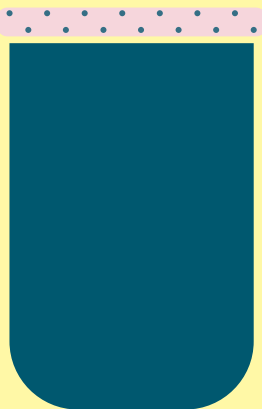
DUPLEX PRICING IS A 25% PREMIUM
OVER REGULAR 4CP NEOPRENE.

BIAS TREATMENTS

NEW THIS YEAR

CUSTOMIZE THE COLORS ON ONE
OF OUR STOCK DESIGNS OR DESIGN
YOUR VERY OWN 4CP BIAS

SEVERAL STOCK 4CP PATTERNS
TO CHOOSE FROM, LIKE:
MARBLE, PLAID, & RAINBOW



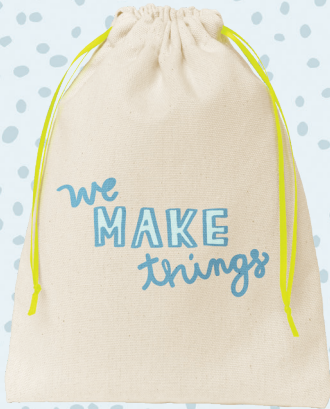
PRICING & EXAMPLES OF 4CP BIAS
ON PAGE 34. STOCK PATTERNS &
DESIGN OPTIONS ON PAGE 95.





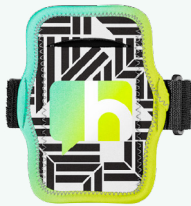
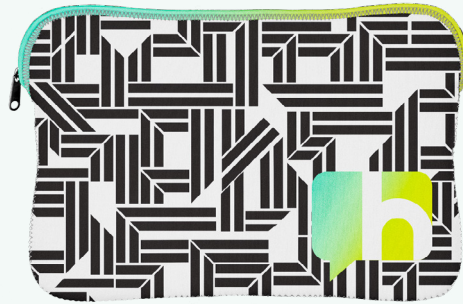














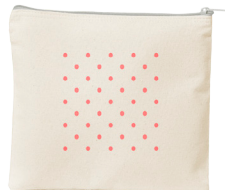
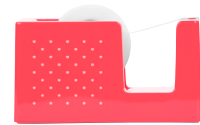
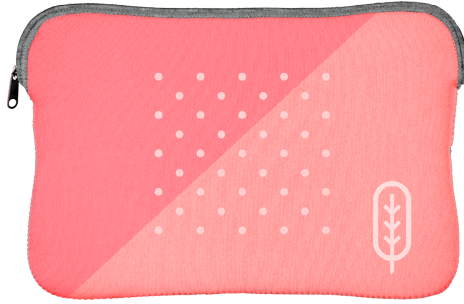














NEW STUFF



TECH TACO
PAGE 69



We now offer 4CP BIAS
PAGE 34

CANOE
PAGE 70



GIFT SET from Up Your Standard. Visit upyourstandard.com for more info.



GEL PENS from
Up Your Standard



CAMPFIRE MUG
PAGE 79

MARBLE MUG
PAGE 81



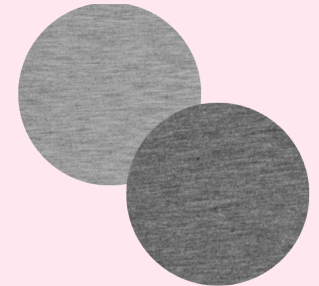
New Neoprene Textures!



SUEDE'ISH

A faux suede neoprene. Available in Smoke & Bourbon.

PAGE 26



HEATHERED

Jersey knit neoprene just like your favorite t-shirt. Available in Athletic & Charcoal

PAGE 28



Continued

Our new line of canvas bags, pouches, & accessories. See more at numomfg.com/continued

SUEDE'ISH





#0803-SUE **VENTI**

24	48	96	144	288
\$14.41	\$13.48	\$12.91	\$11.69	\$10.69 (5c)



#1029-SUE **WINE TOTE**

24	48	96	144	288
\$8.36	\$7.41	\$6.74	\$6.06	\$5.53 (5c)



#0761-SUE **KAPPOTTO FOR IPAD**

24	48	96	144	288
\$10.81	\$9.61	\$8.65	\$7.86	\$7.15 (5c)



#KK-ADDPKT-SUE **LITTLE BUDDY WITH SUEDE'ISH POCKET**

50	100	250	500	1000
\$2.25	\$2.09	\$1.91	\$1.85	\$1.67 (5c)



#KK-SUE **KOLDER KADDY**

50	100	250	500	1000
\$1.98	\$1.78	\$1.55	\$1.48	\$1.25 (5c)



#0799-SUE **LIAM**

50	100	250	500	1000
\$2.91	\$2.71	\$2.45	\$2.23	\$2.04 (5c)

Prices include a one-color imprint. Additional colors add \$0.30(g) per color.
Some items have 2nd side imprint charge. Other Neoprene items offered in premium Suede'ish are available for a 25% upcharge.

Heathered

JERSEY KNIT





#0804-PP-HEA **VAN METRO**

100	250	500	1000
\$8.13	\$7.22	\$6.50	\$5.82 (4c)



#1019-HEA **JOGSTRAP**

50	100	250	500	1000
\$8.52	\$7.56	\$6.87	\$6.32	\$5.77 (5c)



#0667-HEA **KLUTCH**

24	48	96	144	288
\$13.86	\$12.83	\$12.27	\$11.12	\$10.03 (5c)



#1418-HEA **CANOE**

50	100	250	500	1000
\$7.55	\$6.77	\$6.25	\$5.80	\$5.41 (5c)



#KK-HEA **KOLDER KADDY**

50	100	250	500	1000
\$1.98	\$1.78	\$1.55	\$1.48	\$1.25 (5c)



#0799-HEA **LIAM**

50	100	250	500	1000
\$2.91	\$2.71	\$2.45	\$2.23	\$2.04 (5c)

Prices include a one-color imprint. Additional colors add \$0.30(g) per color.
Some items have 2nd side imprint charge. Other Neoprene items offered in premium Suede'ish are available for a 25% upcharge.





#1020-BUR **L.E.N.S.**

50	100	250	500	1000	
\$6.33	\$5.64	\$5.09	\$4.54	\$4.13	(5c)



#1029-DEN **WINE TOTE**

24	48	96	144	288	
\$8.36	\$7.41	\$6.74	\$6.06	\$5.53	(5c)



#0667-BUR **KLUTCH**

50	100	250	500	1000	
\$13.86	\$12.83	\$12.27	\$11.12	\$10.03	(5c)



#KK-ADDPKT-DEN **LITTLE BUDDY WITH DENIM POCKET**

50	100	250	500	1000	
\$2.25	\$2.09	\$1.91	\$1.85	\$1.67	(5c)



#KK-BUR **KOLDER KADDY**

50	100	250	500	1000	
\$1.98	\$1.78	\$1.55	\$1.48	\$1.25	(5c)



#0799-DEN **LIAM**

50	100	250	500	1000	
\$2.91	\$2.71	\$2.45	\$2.23	\$2.04	(5c)

Prices include a one-color imprint. Additional colors add \$0.30(g) per color.
Some items have 2nd side imprint charge. Other Neoprene items offered in premium Suede'ish are available for a 25% upcharge.

duplex

NeOPRENE

* PERSONALIZE
INSIDE AND
OUTSIDE! *



MIX AND MATCH
COLORS AND PATTERNS

* ENDLESS
POSSIBILITIES!



SOME
ITEMS ARE
REVERSIBLE



Item # will be the 4CP Product # -DUP for Duplex items. Pricing can be calculated by adding a 25% upcharge to regular 4CP pricing. Single setup of \$45(g) includes a 4CP imprint on inside and outside.

4CP BIAS

WE CREATED A COUPLE DIFFERENT SCENARIOS TO CHOOSE FROM, SO LISTEN UP.

EASY STREET

We've created some pre-printed patterns to choose from. These are already printed & ready to use on your item.



No additional setup
No minimum
No additional lead time

NARROW ROAD

This option starts with one of our stock designs & you customize the colors to your liking.



\$60(g) Setup
Requires a minimum
3 to 5 days additional lead time

GO YOUR OWN WAY

Completely custom! Just know there are limitations, so send us an email & we'll figure out if it will work.



\$60(g) Setup
Requires a minimum
5-7 days additional lead time

THERE IS A PER ITEM UPCHARGE AND MINIMUM THAT VARIES PER ITEM

ITEM SIZE	<i>small</i>	MEDIUM	LARGE
UPCHARGE PRICE	\$0.50(c)	\$1.00(c)	\$2.50(c)
MINIMUMS	250pcs	100pcs	50pcs
SIZING EXAMPLES	Liam, Cyclone, Van Metro	L.E.N.S., Wine Tote, Canoe	Klutch, Venti, Tablet Sleeve

PAGE 95 FOR
PATTERN OPTIONS



MEET THE FAVORITES



HUMBLE BEGINNINGS

The one that started it all. The **Kolder Holder** is made with **extra thick** 5mm Neoprene and has a glued in bottom for that extra bit of protection in the heat.
- Jim

NOT JUST A BASIC STITCH

Tried and True. The **Kolder Kaddy** is the Neoprene **top seller**. You can change the stitch color, and now you can make it reversible with our new **DUPLEX** Neoprene!
-Misty



EVERY GIRL'S CRAZY BOUT' A SHARP DRESSED CAN

I love the **Liam** because of the finished edge and the ability to incorporate another **color** element.
-Melissa



I'LL HOLD YOUR KNICK-KNACKS

I'm all about **style and function**, so my fave is the "**Little Buddy**". There's a tiny pocket for my stuff. Isn't it just the **CUTEST?**
-Katlyn



CLINGS HARDER THAN YOUR CRAZY EX...

A good percentage of my weekends are spent **tailgating**. I just snap my **MMKK** on the truck when it's my turn for cornhole.
-Justin



KK Screen Print



KK-4CP Sublimation

KOLDER KADDY™

Collapsible Bottom - Best Seller

	Screen	4CP
50	\$1.58	\$3.20
100	\$1.42	\$2.73
250	\$1.24	\$2.44
500	\$1.18	\$2.17
1000	\$1.00	\$1.68 (5c)

SETUPS
\$45.00 (g)
(per color on screen print)

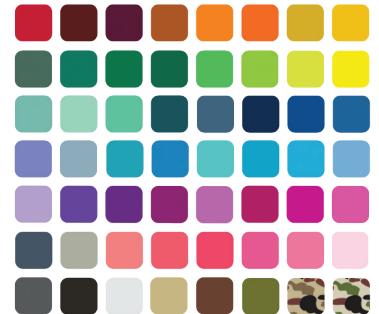
ITEM DIMENSIONS
3.75" W x 5.125" H (Flat)

IMPRINT AREA
3" W x 3" H; 1.875" Dia. Bottom
(4CP Full Bleed Available)

PACK	SIZE	WEIGHT
250 ct	15 x 15 x 10	12 lb

Prices include a one-color screen print on one or two sides and bottom, or a 4CP sublimation print on all sides. Additional screen print colors: add \$0.30 (g) each.

NEOPRENE COLORS



TEXTURES & TREATMENTS



SPICE IT UP!

MAKE IT
A LITTLE BUDDY!

GREAT FOR
TRADE SHOW
GIVEAWAYS!

PERFECT POCKET
SIZE FOR YOUR
BUSINESS CARD!



1. PICK YOUR KOLDER
KADDY COLOR, TEXTURE,
OR TREATMENT.

2. NEXT, PICK YOUR
POCKET COLOR, TEXTURE,
OR TREATMENT.

3. KOLDER KADDY + POCKET
STYLE PRICE STYLE PRICE
= LITTLE BUDDY PRICING

SOLID COLOR POCKET
WITH ONE COLOR IMPRINT

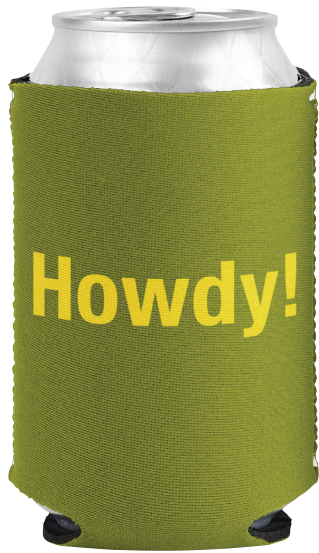
Add \$0.53 (c)
to your Kolder Kaddy

TEXTURED POCKET
WITH ONE COLOR IMPRINT

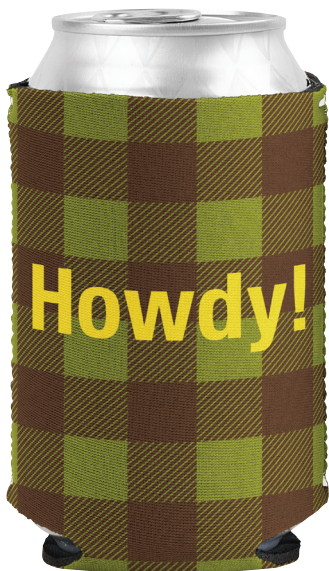
Add \$0.67 (c)
to your Kolder Kaddy

4CP POCKET
FULL BLEED SUBLIMATION

Add \$0.67 (c)
to your Kolder Kaddy



MMKK Screen Print



MMKK-4CP Sublimation

MAGNETIC KOLDER KADDY™

Built-in Magnet Strip

	Screen	4CP
50	\$4.85	\$6.47
100	\$4.34	\$6.07
250	\$4.01	\$5.75
500	\$3.83	\$5.32
1000	\$3.65	\$5.03 (5c)

SETUPS

\$45.00 (g)

(per color on screen print)

ITEM DIMENSIONS

3.75" W x 5.125" H (Flat)

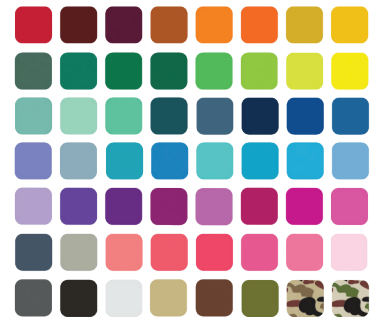
IMPRINT AREA

3" W x 3" H Screen
(4CP Full Bleed Available)

PACK	SIZE	WEIGHT
200 ct	15 x 15 x 10	12 lb

Prices include a one-color screen print on one side and bottom, or a 4CP full bleed sublimation print. Additional screen print colors: add \$0.30 (g) each.

NEOPRENE COLORS



TEXTURES & TREATMENTS



KOLDER HOLDER™

Extra Thick Neoprene
Glued In Bottom

	Screen	4CP
50	\$2.34	\$4.19
100	\$2.16	\$3.65
250	\$1.97	\$3.20
500	\$1.83	\$2.84
1000	\$1.68	\$2.75 (5c)

SETUPS
\$45.00 (g)

(per color on screen print)

ITEM DIMENSIONS
2.875" Diameter x 4" H

IMPRINT AREA
3.5" W x 3.5" H One-Sided;
3" W x 3" H Front & Back
(4CP Full Bleed Available)

PACK	SIZE	WEIGHT
50 ct	15 x 15 x 10	5 lb

Prices include a one-color screen print on one side, two sides, wrap, or a 4CP full bleed sublimation print. Additional screen print colors: add \$0.30 (g) each.

EXTRA THICK COLORS



TEXTURES & TREATMENTS



KH Screen Print



KH-4CP Sublimation



0799 Screen Print



0799-4CP Sublimation

Use Duplex Neoprene to make this product reversible
25% Upcharge | See page for 33 for more details.

LIAM™

Neoprene with sewn in bottom

	Screen	4CP
50	\$2.33	\$4.37
100	\$2.17	\$3.74
250	\$1.96	\$3.28
500	\$1.78	\$2.91
1000	\$1.63	\$2.73 (5c)

SETUPS
\$45.00 (g)
(per color on screen print)

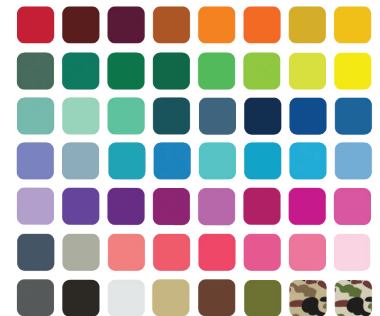
ITEM DIMENSIONS
4.25" H x 3" Diameter

IMPRINT AREA
3" W x 3" H Front & Back
or 7.25" W x 3" H Wrap
(4CP Full Bleed Available)

PACK	SIZE	WEIGHT
150 ct	15 x 15 x 10	12 lb

Prices include a one-color screen print on one or two sides, or a 4CP sublimation print on all sides. Additional screen print colors: add \$0.30 (g) each. For bottom imprint, add \$0.30 (g) each.

NEOPRENE COLORS



TEXTURES & TREATMENTS



FREEZE ME™

Freezable can insulator

	Screen	4CP
50	\$6.65	\$7.64
100	\$6.35	\$7.16
250	\$6.01	\$6.82
500	\$5.67	\$6.45
1000	\$5.36	\$6.09 (5c)

SETUPS

\$45.00 (g)

(per color on screen print)

ITEM DIMENSIONS

4.25" W x 5" H (Flat)

IMPRINT AREA

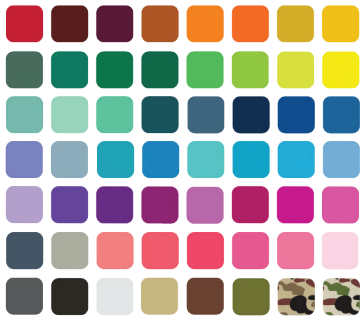
3" W x 3" H (screen)

(4CP Full Bleed Available)

PACK	SIZE	WEIGHT
50 ct	12 x 10 x 20	11 lb

Prices include a one-color screen print on one or two sides and bottom, or a 4CP sublimation print on all sides. Additional screen print colors: add \$0.30 (g) each.

NEOPRENE COLORS



TEXTURES & TREATMENTS



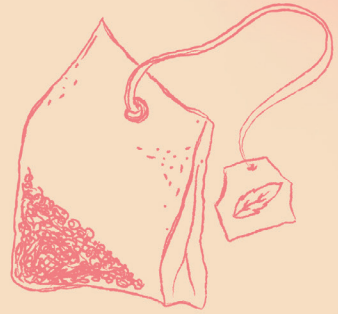
1081 Screen Print



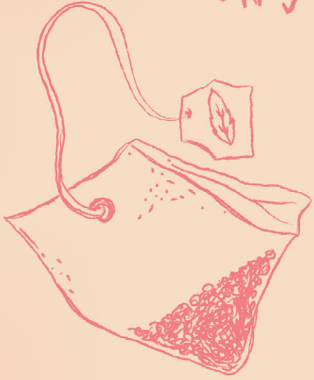
1081-4CP Sublimation



MINT ✓



CINNAMON ✓



TEA ✓



sip.



SUGAR ✓



LEMONS ✓





#1363
#1363-4CP **JAR SLEEVE**

	50	100	250	500	1000
Screen	\$1.49	\$1.38	\$1.27	\$1.15	\$1.05
4CP	\$2.76	\$2.46	\$2.21	\$1.95	\$1.59
			(5c)		



#1362
#1362-4CP **JAR KADDY**

	50	100	250	500	1000
Screen	\$1.87	\$1.66	\$1.49	\$1.36	\$1.24
4CP	\$3.45	\$2.96	\$2.59	\$2.30	\$1.88
			(5c)		



#1157
#1157-4CP **JAR KADDY + BIAS**

	50	100	250	500	1000
Screen	\$2.61	\$2.32	\$2.09	\$1.90	\$1.74
4CP	\$4.39	\$3.76	\$3.29	\$2.57	\$2.39
			(5c)		



#1363-(Bur-Den)

	50	100	250	500	1000
Screen	\$1.86	\$1.73	\$1.59	\$1.44	\$1.31
			(5c)		



#1362-(Bur-Den)

	50	100	250	500	1000
Screen	\$2.33	\$2.07	\$1.87	\$1.70	\$1.55
			(5c)		



#1157-(Bur-Den)

	50	100	250	500	1000
Screen	\$3.26	\$2.90	\$2.61	\$2.38	\$2.18
			(5c)		





BS Screen Print



BS-4CP Sublimation

BOTTLE SUIT

Neoprene with glued in bottom

	Screen	4CP
50	\$3.55	\$6.35
100	\$3.38	\$5.54
250	\$3.12	\$4.89
500	\$2.93	\$4.36
1000	\$2.66	\$4.10 (5c)

SETUPS

\$45.00 (g)

(per color on screenprint)

ITEM DIMENSIONS

7.625" H x 2.125" Diameter

IMPRINT AREA

3.25" W x 2.5" H Zipper Side;

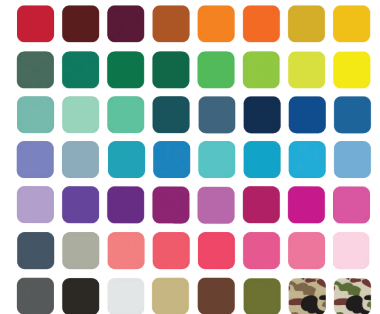
3.25" W x 4" H Back;

4CP Full Bleed Available

PACK	SIZE	WEIGHT
50 ct	15 x 15 x 10	6 lb

Prices include a one-color imprint on one side of insulator. For second side imprint, add \$0.30 (g). Additional imprint colors: add \$0.30 (g) per color, per side. Additional charges apply if second side imprint is different.

NEOPRENE COLORS



TEXTURES & TREATMENTS



ADD BOTTLE OPENER

Blank : \$0.60 Imprint : \$0.80

Setup \$45.00 (g) for Opener

CYKLONE

Neoprene bottle insulator
Screen 4CP

50	\$3.72	\$7.03
100	\$3.55	\$6.13
250	\$3.28	\$5.39
500	\$3.08	\$4.85
1000	\$2.79	\$4.56 (5c)

SETUPS

\$45.00 (g)

(per color on screenprint)

ITEM DIMENSIONS

4.5" W x 15.5" H (Flattened)

IMPRINT AREA

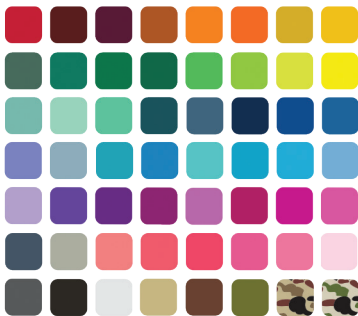
3.5" W x 8.5" H

4CP Full Bleed Available

PACK	SIZE	WEIGHT
50 ct	15 x 15 x 10	10 lb

Prices include a one-color imprint on one side of insulator. For second side imprint, add \$0.30 (g). Additional imprint colors: add \$0.30 (g) per color, per side. Additional charges apply if second side imprint is different.

NEOPRENE COLORS



TEXTURES & TREATMENTS



0713 Screen Print



0713-4CP Sublimation



1029 Screen Print



1029-4CP Sublimation

SINGLE WINE TOTE

Fits most 750ml Wine Bottles

	Screen	4CP
24	\$6.69	\$8.63
48	\$5.93	\$7.77
96	\$5.39	\$7.01
144	\$4.85	\$6.36
288	\$4.42	\$5.82 (5c)

SETUPS
\$45.00 (g)
(per color on screenprint)

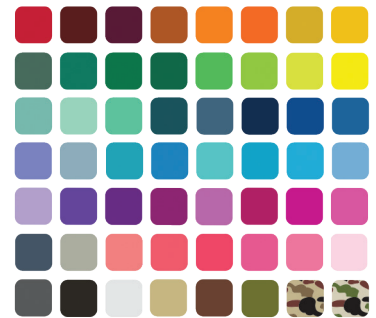
ITEM DIMENSIONS
4.5" W x 15.5" H (Flattened)

IMPRINT AREA
3.5" W x 8.5" H (Screen)
4CP Full Bleed Available!

PACK	SIZE	WEIGHT
50 ct	15 x 15 x 10	10 lb

Prices include a one-color imprint on one side of insulator. For second side imprint, add \$0.30 (g). Additional imprint colors: add \$0.30 (g) per color, per side. Additional charges apply if second side imprint is different.

NEOPRENE COLORS



TEXTURES & TREATMENTS



DOUBLE WINE TOTE

Fits most 750ml Wine Bottles

	Screen	4CP
24	\$ 9.39	\$11.45
48	\$8.74	\$10.26
96	\$7.99	\$9.39
144	\$7.12	\$8.63
288	\$6.47	\$7.88 (5c)

SETUPS

\$45.00 (g)

(per color on screenprint)

ITEM DIMENSIONS

4.5" W x 15.5" H (Flattened)

IMPRINT AREA

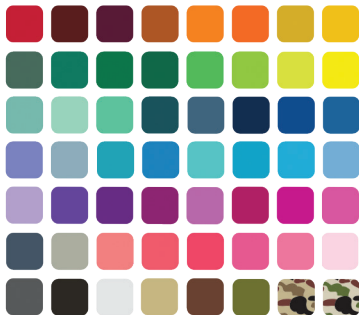
3.5" W x 8.5" H

4CP Full Bleed Available!

PACK	SIZE	WEIGHT
25 ct	15 x 15 x 10	10 lb

Prices include a one-color imprint on one side of insulator. For second side imprint, add \$0.30 (g). Additional imprint colors: add \$0.30 (g) per color, per side. Additional charges apply if second side imprint is different.

NEOPRENE COLORS



TEXTURES & TREATMENTS



1030 Screen Print



1030-4CP Sublimation



0638 Screen Print



0638-4CP Sublimation

GROWLER COVER

Neoprene with
Sewn-in Bottom
screen 4CP

24	\$6.23	\$8.37
48	\$5.54	\$7.40
96	\$4.98	\$6.58
144	\$4.53	\$5.92
288	\$4.15	\$5.38 (5c)

SETUPS

\$45.00 (g)

(per color on screenprint)

ITEM DIMENSIONS

11.375" H x 5.25" Diameter

IMPRINT AREA

4.5" W x 4.5" H Front & Back

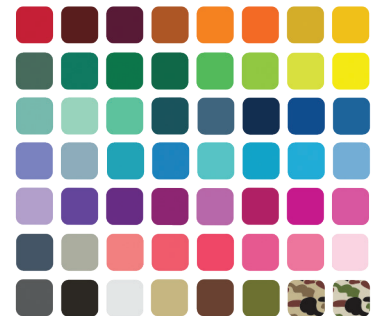
or 13.5" W x 4.5" H Wrap

4CP Full Bleed Available!

PACK	SIZE	WEIGHT
40 ct	18 x 18 x 13	10 lb

Prices include a one-color screen print on one side, two sides, wrap or a 4CP full bleed sublimation print. Additional screen print colors: add \$0.30 (g) each. Bottom imprint available. Add \$0.30 (g) plus additional screen charge(s).

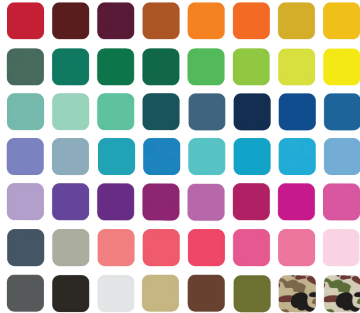
NEOPRENE COLORS



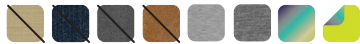
TEXTURES & TREATMENTS



NEOPRENE COLORS



TEXTURES & TREATMENTS



0642

GROWLER COVER WITH DRAWSTRING

Neoprene with
Strap & Sewn-in Bottom
Screen 4CP

24	\$10.99	\$15.88
48	\$9.77	\$13.90
96	\$8.79	\$12.35
144	\$7.99	\$11.12
288	\$7.32	\$10.11 (5c)

SETUPS

\$45.00 (g)

(per color on screenprint)

GROWLER COVER WITH STRAP

Neoprene Hook & Loop Closure

	Screen	4cp
24	\$12.73	\$16.46
48	\$11.32	\$14.40
96	\$10.18	\$12.80
144	\$9.26	\$11.52
288	\$8.31	\$10.48 (5c)

SETUPS

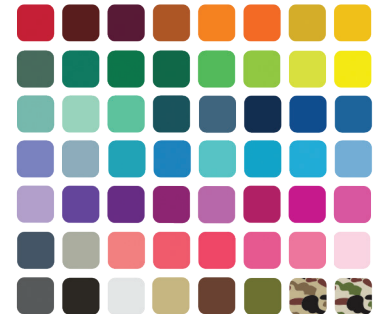
\$45.00 (g)

(per color on screenprint)



0406

NEOPRENE COLORS



TEXTURES & TREATMENTS





115 Screen Print



115-4CP Sublimation

ZIPPERED BOTTLE COOLIE

Scuba Foam (Open-Cell)

	Screen	4CP
150	\$2.86	\$4.44
250	\$2.49	\$3.86
500	\$2.19	\$3.35
1000	\$1.84	\$3.08 (4c)

SETUPS

\$45.00 (g)

(per color on screenprint)

ITEM DIMENSIONS

3 3/4" W x 8" H (Flat)

IMPRINT AREA

3.66" W x 1.76" H Zipper Side;

3.66" W x 3.78" H Back;

1.625" Bottom Diameter

Bottle Opener: 1.3" W x 0.25" H

PACK	SIZE	WEIGHT
150 ct	15 x 15 x 10	7 lb

Prices include a one-color imprint on one or two sides and bottom, or a 4CP sublimation print on all sides. Additional imprint colors: add \$0.30 (g) each.

SCUBA FOAM COLORS



TEXTURES & TREATMENTS



ADD BOTTLE OPENER

Blank : \$0.60 Imprint : \$0.80

SETUP \$45.00 (g)

POCKET COOLIE®

Scuba Foam (Open-Cell)
Screen 4CP

150	\$1.15	\$1.97
250	\$1.00	\$1.71
500	\$0.92	\$1.55
1000	\$0.69	\$1.32 (4c)

SETUPS
\$45.00 (g)

(per color on screenprint)

ITEM DIMENSIONS
3.625" W x 5" H (Flat)

IMPRINT AREA
3.5" W x 3.5" H (Front & Back);
1.625" Diameter (Bottom)

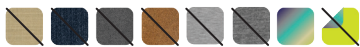
PACK	SIZE	WEIGHT
250 ct	15 x 15 x 10	6 lb

Prices include a one-color imprint on one or two sides and bottom, or a 4CP sublimation print on all sides. Additional screen print colors: add \$0.30 (g) each.

SCUBA FOAM COLORS



TEXTURES & TREATMENTS



100 Screen Print



100-4CP Sublimation



Zino for Bottles



Zino for Vino & Cans

ZINO

Made in USA
Knitted Acrylic Yarn

	Bottles	Vino Can
100	\$4.34	\$3.61
250	\$3.81	\$3.14
500	\$3.38	\$2.78
1000	\$3.17	\$2.63 (4c)

SETUP
\$45.00 (g)

ITEM DIMENSIONS
Vino: 2.875" W x 3.75" H (Flat)
Bottle: 2.875" W x 7.125" H (Flat)

IMPRINT AREA
Vino: 3" W x 3.5" H
Bottle: 3" W x 3.25" H

PACK	SIZE	WEIGHT
50 ct.	12 x 19 x 7	4 lb.s.

Prices include up to four stock yarn colors (including background color) with a knitted logo.

ZINO YARN COLORS





lunch & RECESS



VENTI™

Neoprene • Zipper Closure

	Screen	4CP
24	\$11.69	\$15.34
48	\$10.94	\$14.36
96	\$10.49	\$13.77
144	\$9.51	\$12.48
288	\$8.71	\$11.44
576	\$8.55	\$11.22 (6c)

SETUPS
\$45.00 (g)

(per color on screenprint)

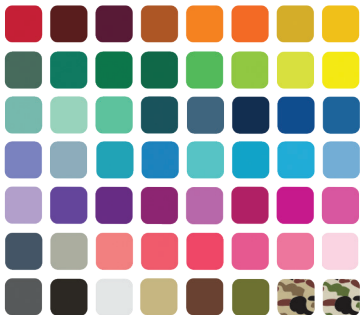
ITEM DIMENSIONS
10" W x 12" H x 3.25" D

SCREEN IMPRINT AREA
7.875" W x 7.5" H

PACK	SIZE	WEIGHT
24 ct	15 x 15 x 10	12 lb

Prices include a one-color imprint on one side, or a 4CP sublimation print on both sides. Additional imprint colors add \$0.30 (g) each. For second side screen imprint add \$0.30 (g) per color, per side. Additional setup required if second side is different.

NEOPRENE COLORS



TEXTURES & TREATMENTS



0803 Screen Print



0803-4CP Sublimation



O667 Screen Print



O667-4CP Sublimation

KLUTCH™

	Zipper Closure	
	Screen	4CP
24	\$11.30	\$13.30
48	\$10.48	\$12.38
96	\$10.03	\$11.83
144	\$9.11	\$10.74
288	\$8.02	\$9.84 (5c)

SETUPS
\$45.00 (g)
(per color on screen print)

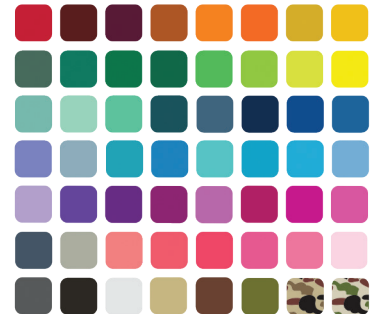
ITEM DIMENSIONS
9.5" W x 9.5" H x 4.5" D

IMPRINT AREA
7" W x 4.25" H
4CP Full Bleed Available

PACK	SIZE	WEIGHT
24 ct	15 x 15 x 10	12 lb

Prices include a one-color imprint on one side, or a 4CP sublimation print on both sides. Additional imprint colors add \$0.30 (g) each. For second side screen imprint add \$0.30 (g) per color, per side. Additional setup required if second side is different.

NEOPRENE COLORS



TEXTURES & TREATMENTS



GRAN KLUTCH™

Zipper Closure

	Screen	4CP
24	\$14.53	\$17.85
48	\$13.59	\$16.69
96	\$13.05	\$16.01
144	\$11.83	\$14.51
288	\$10.97	\$13.29 (5c)

SETUPS

\$45.00 (g)

(per color on screen print)

ITEM DIMENSIONS

11.5" W x 12" H x 6" D

IMPRINT AREA

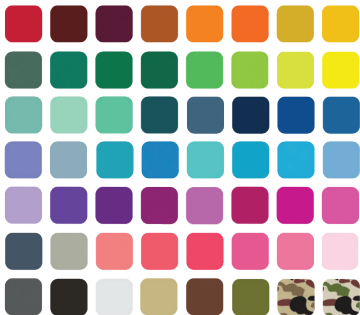
8" W x 5.5" H

4CP Full Bleed Available

PACK	SIZE	WEIGHT
24 ct	15 x 15 x 10	12 lb

Prices include a one-color imprint on one side, or a 4CP sublimation print on both sides. Additional imprint colors add \$0.30 (g) each. For second side screen imprint add \$0.30 (g) per color, per side. Additional setup required if second side is different.

NEOPRENE COLORS



TEXTURES & TREATMENTS



0796 Screen Print



0796-4CP Sublimation



#9299 SNAK-A-LOPE

EcoTwill Exterior, Nylon Cloth Interior, Hook & Loop Closure

50	100	250	500	1000
\$3.46	\$3.23	\$3.11	\$2.99	\$2.76 (5c)

ITEM DIMENSIONS: 7.25" W x 5.875" H (Closed) 7.25" W x 11.375" H (Open) • IMPRINT AREA: 5" W x 2.5" H

CARTON PACK/SIZE/WEIGHT: 200 ct : 17 X 17 X 13 : 17 lb • SETUPS: \$45.00 (g) per color on screenprint

Prices include a one-color imprint on flap area. Additional colors add \$0.30 (g).



#1079 PACKIT

Freezable Lunch Tote



12	24	48	96	144	288
\$19.99	\$18.99	\$17.99	\$17.49	\$16.99	\$16.49 (5c)

ITEM DIMENSIONS: 8.5" W x 5.25" H x 2.25" (Folded) • IMPRINT AREA: 6.5" W x 3.25" H

CARTON PACK/SIZE/WEIGHT: 12 ct : 18 X 11 X 8 : 18 lb • SETUPS: \$45.00 (g) per color on screenprint

Prices include a one-color imprint on front flap panel. Additional colors add \$0.30 (g)

1019 : 1019-4CP

JOGSTRAP™

Neoprene Arm Band for Smartphones
Elastic + Hook & Loop

	Screen	4CP
50	\$6.82	\$7.71
100	\$6.05	\$7.04
250	\$5.50	\$6.49
500	\$5.06	\$5.72
1000	\$4.62	\$5.28 (5c)

SETUPS
\$45.00 (g) per color



1389 : 1389-4CP

JOGSTRAP PLUS™

For larger Smartphones
Neoprene Arm Band for Smartphones
Elastic + Hook & Loop

	Screen	4CP
50	\$7.19	\$8.60
100	\$6.55	\$7.90
250	\$6.14	\$7.39
500	\$5.56	\$6.66
1000	\$5.08	\$6.18

SETUPS
\$45.00 (g) per color

0804-PP : 0804-PP-4CP

**VAN METRO™
PUSH-PULL**

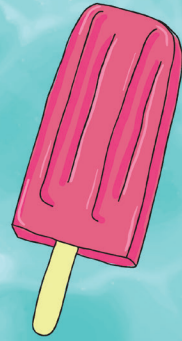
22 oz. Squeezable LDPE Bottle
Neoprene Insulating Sleeve
Push-Pull Cap

	Screen	4cp
100	\$6.51	\$8.15
250	\$5.78	\$7.20
500	\$5.20	\$6.45
1000	\$4.23	\$5.29 (5c)

SETUPS
\$45.00 (g)
(per color on screenprint)



pool party





#9368 **DUAL TUMBLER**

48	96	240	576	1008
\$5.70	\$5.47	\$5.04	\$4.92	\$4.82 (5c)

ITEM DIMENSIONS: 8.75" H x 3.5" Diameter • IMPRINT AREA: 3" W x 3" H
 CARTON PACK/SIZE/WEIGHT: 24 ct : 24 X 16 X 11 : 18 lb • SETUP: \$45.00 (g) one color imprint only



4CP PREMIUM KOOLER BAG

Tough Duck Exterior • Heat-Sealed Liner • Zipper Closure • Leak Proof

KKB1200-4CP (12-Pack Size)

12	\$44.29
48	\$41.20
96	\$38.63
144	\$36.57
288	\$34.76 (5c)

SETUPS
\$45.00 (g)

ITEM DIMENSIONS
12.5" x 9.25" x 6.625"

IMPRINT AREA
Full Bleed - Entire Bag

PACK	SIZE	WEIGHT
16 ct	30 x 20 x 25	35 lb

KKB1800-4CP (18-Pack Size)

12	\$55.62
48	\$52.53
96	\$49.44
144	\$46.35
288	\$44.03 (5c)

SETUPS
\$45.00 (g)

ITEM DIMENSIONS
14.75" x 10.75" x 7.5"

IMPRINT AREA
Full Bleed - Entire Bag

PACK	SIZE	WEIGHT
10 ct	30 x 20 x 25	35 lb

KKB2400-4CP (24-Pack Size)

12	\$63.86
48	\$60.77
96	\$56.14
144	\$53.56
288	\$50.99 (5c)

SETUPS
\$45.00 (g)

ITEM DIMENSIONS
17.375" x 11" x 8.5"

IMPRINT AREA
Full Bleed - Entire Bag

PACK	SIZE	WEIGHT
9 ct	30 x 20 x 25	25 lb

Prices include a four-color process sublimation imprint. See our website for additional color and sizes available!



4CP PILLOW COVERS

Cover only. Does not include stuffing, black zipper closure.

1473-4CP

24	\$13.49
48	\$13.11
96	\$12.59
144	\$11.87
288	\$11.44 (5c)

SETUPS
\$45.00 (g)

ITEM DIMENSIONS
14"x14"

IMPRINT AREA
Full Bleed - Entire Pillow Cover

PACK	SIZE	WEIGHT
80 ct	18"x18"x13"	20 lb

1474-4CP

24	\$16.01
48	\$15.01
96	\$14.41
144	\$13.59
288	\$13.10 (5c)

SETUPS
\$45.00 (g)

ITEM DIMENSIONS
16"x16"

IMPRINT AREA
Full Bleed - Entire Pillow Cover

PACK	SIZE	WEIGHT
50 ct	18"x18"x13"	22 lb

1475-4CP

12	\$20.99
48	\$19.67
96	\$18.89
144	\$17.82
288	\$17.17 (5c)

SETUPS
\$45.00 (g)

ITEM DIMENSIONS
18"x18"

IMPRINT AREA
Full Bleed - Entire Pillow Cover

PACK	SIZE	WEIGHT
40 ct	18"x18"x13"	22 lb



PK 1-color Screen Print



PEEPER KEEPER™

Neoprene

50	\$1.88
100	\$1.69
250	\$1.62
500	\$1.48
1000	\$1.39 (5c)

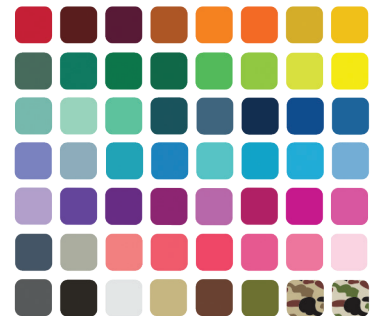
SETUP
\$45.00 (g)
one color imprint only

ITEM DIMENSIONS
0.875" W x 17" L

IMPRINT AREA
10" x 0.625"

PACK	SIZE	WEIGHT
250 ct	12 x 10 x 10	5 lb

NEOPRENE COLORS



TEXTURES & TREATMENTS





#0635 | #0636 KEY HOLDER

	150	250	500	1000
#0635	\$.95	\$.85	\$.80	\$.74
#0636	\$ 1.49	\$ 1.28	\$ 1.17	\$ 1.06 (4c)



ITEM DIMENSIONS: 4.125" W x 2.75" H • IMPRINT AREA: 2.5" W x 1.5" H
 CARTON PACK/SIZE/WEIGHT: 500 ct : 15 X 15 X 10 : 17 lb • SETUP: \$45.00 (g)
 Prices include a one-color imprint only, on one or two sides. 4CP is not available on this item.



#0651 | #0651-4CP CARD GUARD

	100	250	500	1000
Screen	\$ 1.42	\$ 1.26	\$ 1.14	\$ 1.03
4cp	\$ 2.10	\$ 1.94	\$ 1.78	\$ 1.61 (4c)

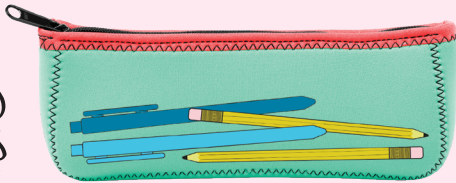


ITEM DIMENSIONS: 4.125" W x 2.75" H • IMPRINT AREA: 2.5" W x 1.5" H
 CARTON PACK/SIZE/WEIGHT: 500 ct : 15 X 15 X 10 : 17 lb • SETUPS: \$45.00 (g) per color
 Prices include a one-color imprint on one or two sides. Additional imprint colors add \$0.30 (g) per color.
 4CP Prices include a four-color process sublimation imprint on two sides.

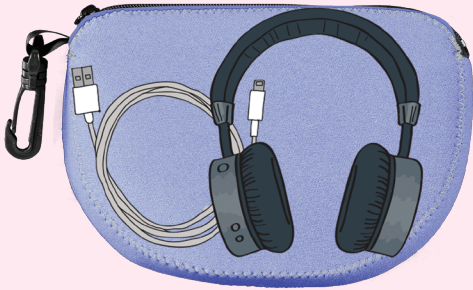
GET ORGANIZED

A PLACE TO
KEEP YOUR THINGS

PENS AND
PENCILS



YOUR SPECS



TECH
ACCESSORIES



TRAVEL ITEMS

TECH TACO

	Screen	4CP
50	\$2.62	\$2.99
100	\$2.02	\$2.49
250	\$1.83	\$2.18
500	\$1.62	\$1.98
1000	\$1.50	\$1.81 (5c)

SETUPS
\$45.00 (g)
(per color on screenprint)

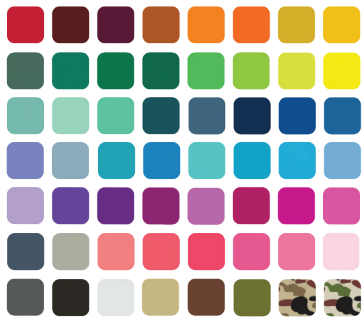
ITEM DIMENSIONS
4" W x 4.25" H (Flat)

IMPRINT AREA
2.68" W x 1" H
4CP Full Bleed Available

PACK	SIZE	WEIGHT
500 ct	15 x 15 x 9	11 lb

Prices include a one-color screenprint on one or two sides (not to be confused with the inside). Additional colors add \$0.30 (g) per color. 4CP Prices include a four-color process sublimation imprint on two sides.

NEOPRENE COLORS



TEXTURES & TREATMENTS



1417 Screen Print



1417-4CP Sublimation



1418 Screen Print



1418-4CP Sublimation

CANOE

Zipper Closure

	Screen	4CP
50	\$6.04	\$9.43
100	\$5.41	\$8.22
250	\$5.00	\$7.29
500	\$4.64	\$6.68
1000	\$4.33	\$6.05 (5c)

SETUPS

\$45.00 (g)

(per color on screenprint)

ITEM DIMENSIONS

8 1/8" W x 3 1/2" H x 1 3/4" D

IMPRINT AREA

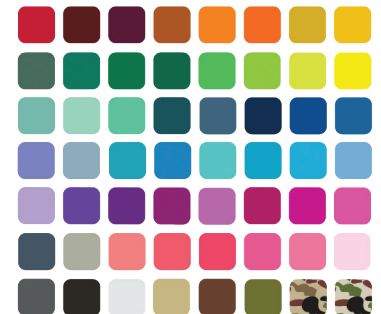
6.5" W x 2" H

4CP Full Bleed Available

PACK	SIZE	WEIGHT
200 ct	18 x 18 x 14	24 lb

Prices include a one-color screen print on one side or 4CP sublimation print on both sides. Additional screen print colors add \$0.30 (g) per color, per location. Additional setup required if second side is different.

NEOPRENE COLORS



TEXTURES & TREATMENTS



LARGE CANOE

Zipper Closure

	Screen	4CP
50	\$6.65	\$10.71
100	\$5.97	\$8.52
250	\$5.63	\$7.65
500	\$5.42	\$7.21
1000	\$4.96	\$6.94 (5c)

SETUPS
\$45.00 (g)

(per color on screenprint)

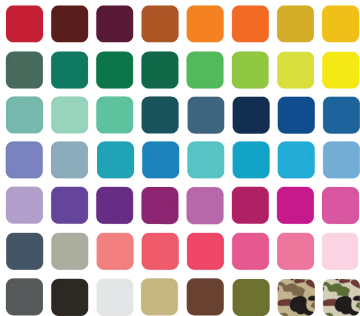
ITEM DIMENSIONS
8" W x 5.5" H x 1.5" D

IMPRINT AREA
7" W x 4.5" H
4CP Full Bleed Available

PACK	SIZE	WEIGHT
50 ct	15 x15 x10	6 lb

Prices include a one-color screen print on one side or 4CP sublimation print on both sides.
Additional screen print colors add \$0.30 (g) per color, per location. Additional setup required if second side is different.

NEOPRENE COLORS



TEXTURES & TREATMENTS



1495 Screen Print



1495-4CP Sublimation



1020 Screen Print



1020-4CP Sublimation

L.E.N.S.

Zipper Closure

	Screen	4CP
50	\$5.06	\$6.27
100	\$4.51	\$5.61
250	\$4.07	\$5.06
500	\$3.63	\$4.51
1000	\$3.30	\$4.07 (5c)

SETUPS

\$45.00 (g)

(per color on screenprint)

ITEM DIMENSIONS

7.75" W x 4" H (Flat)

IMPRINT AREA

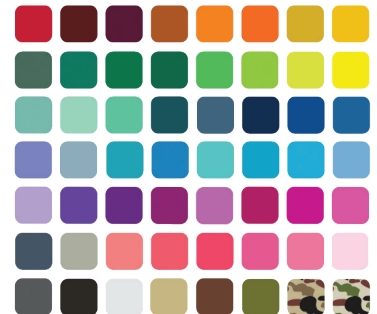
6.75" W x 3" H

4CP Full Bleed Available

PACK	SIZE	WEIGHT
125 ct	15 x 15 x 10	11 lb

Prices include a one-color screen print on one side or 4CP sublimation print on both sides. Additional screen print colors add \$0.30 (g) per color, per location. Additional setup required if second side is different.

NEOPRENE COLORS



TEXTURES & TREATMENTS



U-BAG

Zipper Closure

	Screen	4CP
50	\$5.56	\$9.06
100	\$5.01	\$7.92
250	\$4.55	\$7.04
500	\$4.17	\$6.34
1000	\$3.85	\$5.76 (5c)

SETUPS

\$45.00 (g)

(per color on screenprint)

ITEM DIMENSIONS

8.25" W x 6" H x 1.25" D

IMPRINT AREA

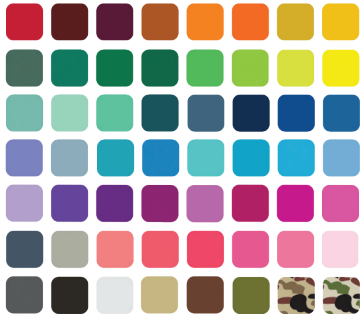
5" W x 3" H

4CP Full Bleed Available

PACK	SIZE	WEIGHT
50 ct	15 x 15 x 10	6 lb

Prices include a one-color screen print on one side or 4CP sublimation print on both sides. Additional screen print colors add \$0.30 (g) per color, per location. Additional setup required if second side is different.

NEOPRENE COLORS



TEXTURES & TREATMENTS



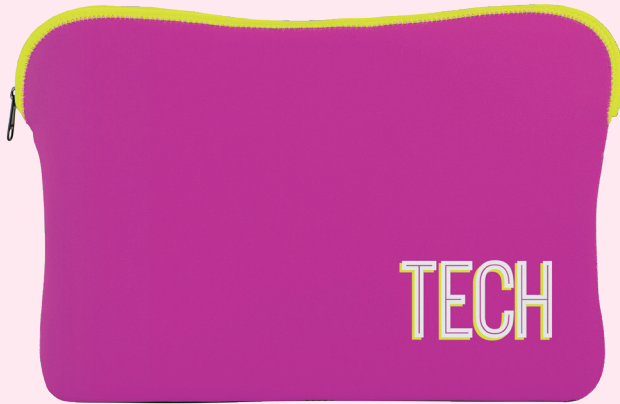
0715 Screen Print



0715-4CP Sublimation

SO, WE HAVE SEVERAL STYLES OF TECH SLEEVES, BUT THESE TWO ARE THE BEST!

the KAPOTTO & *the* MAGLIONE



ONE HAS A ZIPPER & ONE DOESN'T!



MAGLIONE™ FOR IPADS

Neoprene Sleeve
for Ipad

	Mini 0783	Mini-4CP 0783-4CP	Ipad 0728	Ipad-4CP 0728-4CP
24	\$4.13	\$6.53	\$5.24	\$8.33
48	\$3.67	\$5.71	\$4.65	\$7.29
96	\$3.31	\$5.08	\$4.19	\$6.48
144	\$3.01	\$4.58	\$3.81	\$5.83
288	\$2.76	\$4.16	\$3.49	\$5.30 (5c)

SETUPS

\$45.00 (g) on screenprint



SEE WEBSITE
FOR ADDITIONAL
IMPRINT DETAILS.

KAPPOTTO™ FOR IPADS

Zippered Neoprene Sleeve
for Ipad

	Mini 0784	Mini-4CP 0784-4CP	Ipad 0761	Ipad-4CP 0761-4CP
24	\$7.23	\$10.25	\$8.65	\$12.51
48	\$6.43	\$8.97	\$7.69	\$10.95
96	\$5.79	\$7.97	\$6.92	\$9.73
144	\$5.26	\$7.18	\$6.29	\$8.76
288	\$4.82	\$6.53	\$5.72	\$7.96 (5c)

SETUPS

\$45.00 (g) on screenprint





MAGLIONE™

Neoprene Sleeve for Laptop Computers

	11" 0737	13" 0738	15" 0739
24	\$7.43	\$8.17	\$9.69
48	\$6.60	\$7.26	\$8.61
96	\$5.94	\$6.53	\$7.75
144	\$5.40	\$5.94	\$7.05
288	\$4.95	\$5.44	\$6.46 ^(5c)

SETUPS \$45.00 (g) per color

MAGLIONE™ 4CP

Neoprene Sleeve for Laptop Computers

	11" 0737-4CP	13" 0738-4CP	15" 0739-4CP
24	\$11.47	\$13.26	\$16.18
48	\$10.04	\$11.60	\$14.15
96	\$8.92	\$10.31	\$12.58
144	\$8.03	\$9.28	\$11.32
288	\$7.30	\$8.44	\$10.29 ^(5c)

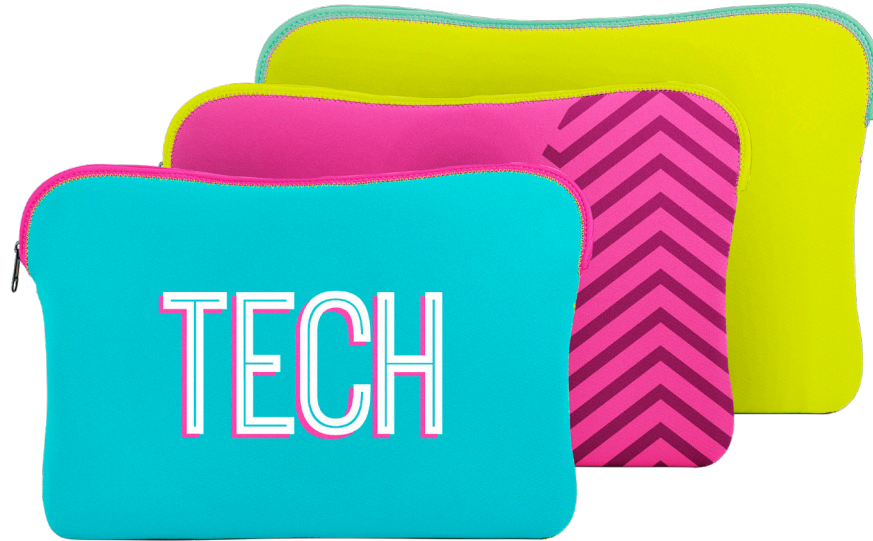
SETUPS \$45.00 (g)

NEOPRENE COLORS

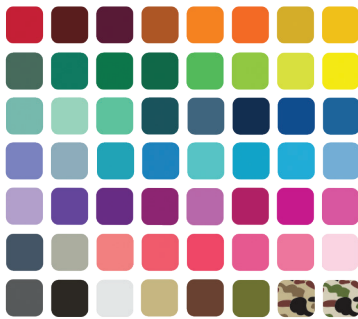


TEXTURES & TREATMENTS





NEOPRENE COLORS



TEXTURES & TREATMENTS



KAPPOTTO™

Zippered Neoprene Sleeve for Laptop Computers

	11" 0762	13" 0763	15" 0764
24	\$10.77	\$11.63	\$13.11
48	\$9.57	\$10.33	\$11.66
96	\$8.62	\$9.30	\$10.49
144	\$7.83	\$8.46	\$9.54
288	\$7.12	\$7.69	\$8.67 (5c)

SETUPS \$45.00 (g) per color

KAPPOTTO™ 4CP

Zippered Neoprene Sleeve for Laptop Computers

	11" 0762-4CP	13" 0763-4CP	15" 0764-4CP
24	\$15.66	\$17.41	\$20.34
48	\$13.70	\$15.23	\$17.80
96	\$12.18	\$13.54	\$15.82
144	\$10.96	\$12.18	\$14.24
288	\$9.96	\$11.08	\$12.95 (5c)

SETUPS \$45.00 (g)





#9482 | #9482-4CP **CAMPFIRE MUG**

	72	144	288	576	1008
Screen	\$6.23	\$5.61	\$5.10	\$4.67	\$4.29
4CP	\$6.78	\$6.10	\$5.55	\$5.08	\$4.69 (5c)

SCREEN PRINT SETUP: \$45.00 (g) per color

4CP SETUP: \$45.00 (g)



#9621 **STRAIGHT WALL GLASS MUG**

72	144	288	576	1008
\$4.89	\$4.40	\$4.00	\$3.67	\$3.45 (5c)

SETUPS: \$45 (g) per color. Decal imprint might be required, to be determined by factory.



#9622 **CURVED GLASS DECAL MUG**

72	144	288	576	1008
\$6.37	\$5.73	\$5.21	\$4.78	\$4.39 (5c)

DECAL ONLY | SETUPS: \$65 (g) per color



#9732 **MARBLE MUG**

72	144	288	576	1008
\$5.48	\$4.93	\$4.48	\$4.11	\$3.79 <small>(5c)</small>

CARTON PACK/SIZE/WEIGHT: 36 ct : 44 X 31 X 36 : 33 lbs

SETUPS: \$45.00 (g) per color. Decal imprint might be required, to be determined by factory.



#851 COLORED DINER MUGS 10 OZ

72	144	288	576	1008
\$4.92	\$4.03	\$3.85	\$3.69	\$3.48 ^(5c)

ITEM DIMENSIONS: 4.625" W x 3.875" H x 3.375" Diameter • IMPRINT AREA: 3" W x 2" H
 CARTON PACK/SIZE/WEIGHT: 36 ct : 20 X 15 X 16 : 48 lb • SETUPS: \$65.00 (g) per color



#851 VITRIFIED DINER MUG 10 OZ

	72	144	288	576	1008
White	\$6.15	\$5.29	\$4.86	\$4.45	\$4.18
Black	\$6.41	\$5.58	\$5.38	\$4.99	\$4.89
Cobalt	\$7.18	\$6.37	\$5.82	\$5.45	\$5.23
Natural	\$5.36	\$4.60	\$4.23	\$3.85	\$3.57

(5c)



#728 BISTRO MUG 16 OZ

	72	144	288	576	1008
White	\$2.96	\$2.60	\$2.41	\$2.29	\$2.08
Black	\$4.01	\$3.56	\$3.23	\$3.00	\$2.78
Cobalt	\$4.02	\$3.57	\$3.30	\$3.14	\$2.85

(5c)



#729 CHALLENGER MUG 11 OZ

	72	144	288	575	1008
White	\$2.60	\$2.34	\$2.14	\$2.04	\$1.87
Black	\$3.05	\$2.73	\$2.55	\$2.49	\$2.44
Cobalt	\$3.03	\$2.87	\$2.78	\$2.69	\$2.44

(5c)



#730 CHALLENGER MUG 14 OZ

	72	144	288	575	1008
White	\$2.78	\$2.56	\$2.37	\$2.22	\$2.00
Black	\$3.45	\$3.22	\$2.89	\$2.78	\$2.59
Cobalt	\$3.51	\$3.19	\$3.03	\$2.83	\$2.59

(5c)

Prices include a one-color imprint on one or two sides. Additional imprint colors: add \$0.40 (g) each.
For artwork requiring tight registration, decal pricing may be required (as determined by factory).



#9893 NEON MUGS

72	144	288	576	1008
\$3.72	\$3.48	\$3.23	\$2.93	\$2.62 (5c)

ITEM DIMENSIONS: 4.625" W x 3.75" H x 3.25" DIAMETER • IMPRINT AREA: 2.75" W x 2.6" H
 CARTON PACK/SIZE/WEIGHT: 36 ct : 18 X 13 X 14 : 49 lb • SETUPS: \$45.00 (g) per color.
 Matte-Finish. Prices include a one-color imprint on one or two sides.



#356 CREATIVE MUG
11 OZ

	72	144	288	576	1008
White	\$2.92	\$2.56	\$2.26	\$1.94	\$1.80
Black	\$3.27	\$3.01	\$2.68	\$2.50	\$2.34

(5c)



#31216 SUBLIMATION MUG 11 OZ

	72	144	288	576	1008
White	\$5.36	\$4.68	\$4.36	\$4.15	\$3.87
Black	\$8.29	\$7.21	\$6.21	\$5.83	\$5.42

(5c)



#517-01 EL GRANDE 15 OZ

	72	144	288	576	1008
White	\$2.92	\$2.66	\$2.38	\$2.27	\$2.14
Black	\$3.61	\$3.29	\$2.97	\$2.76	\$2.57
Cobalt	\$3.84	\$3.54	\$3.17	\$2.97	\$2.77

(5c)



#30825 SUBLIMATION MUG
15 OZ

	72	144	288	576	1008
White	\$7.27	\$6.32	\$5.45	\$5.19	\$4.82
Black	\$9.80	\$8.54	\$7.44	\$6.86	\$6.32

(5c)

Prices include a one-color imprint on one or two sides. Additional imprint colors: add \$0.40 (g) each.
For artwork requiring tight registration, decal pricing may be required (as determined by factory).

sip sip hooray!





#9692 STEMLESS WINE GLASS 16.75 OZ

	72	144	288	576	1008
	\$ 5.41	\$ 4.74	\$ 4.21	\$ 3.85	\$ 3.55
			(5c)		



#9691 STEMLESS WINE GLASS 11.75 OZ

	72	144	288	576	1008
	\$ 5.41	\$ 4.74	\$ 4.21	\$ 3.85	\$ 3.55
			(5c)		



#9694 #9693 RED WINE GLASS

	72	144	288	576	1008
12.75 oz	\$ 5.87	\$ 5.15	\$ 4.57	\$ 4.19	\$ 3.86
18.5 oz	\$ 7.76	\$ 6.82	\$ 6.04	\$ 5.53	\$ 5.10
			(5c)		



#9671 #9672 WHITE WINE GLASS

	72	144	288	576	1008
8 oz	\$ 4.10	\$ 3.56	\$ 3.17	\$ 2.81	\$ 2.65
10 oz	\$ 4.24	\$ 3.68	\$ 3.28	\$ 2.91	\$ 2.72
			(5c)		

Setups \$45.00 (g) per color. Prices include a one-color imprint on one or two sides. Additional imprint colors: add \$0.40 (g) each.
For artwork requiring tight registration, decal pricing may be required (as determined by factory).



#9602 BEER CAN GLASS 16 OZ

72	144	288	576	1008
\$3.90	\$3.49	\$3.18	\$2.87	\$2.56
(5c)				



#9603 PUB GLASS 20 OZ

72	144	288	576	1008
\$6.58	\$5.73	\$4.96	\$4.30	\$3.61
(5c)				



#9613 PINT GLASS 16 OZ

96	288	576	1008
\$2.71	\$2.39	\$2.06	\$1.73
(4c)			



#9604 PILSNER GLASS 16 OZ

72	144	288	576	1008
\$5.84	\$5.09	\$4.44	\$3.90	\$3.14
(5c)				



	#500 SHOT GLASS 1.5 OZ			
	144	288	576	1008
Clear	\$1.72	\$1.65	\$1.34	\$1.05
Black	\$4.45	\$3.91	\$3.48	\$3.30
Cobalt	\$4.61	\$4.13	\$3.86	\$3.56

(5c)



	#605 #640 OLD FASHIONED GLASS				
	72	144	288	576	1008
11 oz	\$3.64	\$3.21	\$2.92	\$2.68	\$2.44
14 oz	\$3.34	\$2.90	\$2.69	\$2.48	\$2.10

(5c)



	#9535 BEVERAGE JAR 16 OZ				
	72	144	288	576	1008
	\$4.96	\$2.04	\$1.85	\$1.67	\$1.56


(5c)



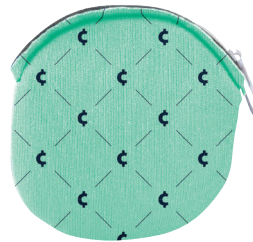
	#9631 ICED TEA GLASS 15 OZ				
	72	144	288	576	1008
	\$3.51	\$3.13	\$2.80	\$2.57	\$2.42

(5c)

Setups \$45.00 (g) per color. Prices include a one-color imprint on one or two sides. Additional imprint colors: add \$0.40 (g) each. For artwork requiring tight registration, decal pricing may be required (as determined by factory).



**DOLLA
DOLLA
BILLS, YO**



#137 COIN
#137-4CP COOLIE

	150	300	600	1200
Screen Print	\$1.65	\$1.47	\$1.24	\$1.10
4CP	\$2.20	\$1.83	\$1.61	\$1.43 (4c)

4.25" DIAMETER
MATERIAL: SCUBA FOAM



#21020S-4CP MINI WALLET
SCUBA 4CP

	150	300	600	1200
5 x 3	\$2.46	\$2.09	\$1.91	\$1.73 (4c)

MATERIAL: SCUBA FOAM



#21003 MINI
WALLET EV

	150	300	600	1200
5 x 3	\$1.86	\$1.61	\$1.32	\$1.10 (4c)

MATERIAL: EXPANDED VINYL



**HORIZONTAL BANK BAG
EXPANDED VINYL**

	150	300	600	1200	
21002EV	\$2.94	\$2.56	\$2.26	\$1.77	10.5 x 5.5
21004EV	\$3.30	\$2.87	\$2.46	\$1.95	11 x 6 (4c)



**CURVED ZIPPER BAG
EXPANDED VINYL**

	100	300	600	1200	
241EV	\$3.31	\$2.88	\$2.58	\$2.34	10.5 x 5.5 (4c)



**LOCKING NIGHT DEPOSIT BAG
STRAIGHT EXPANDED VINYL**

	25	50	100	300	
25101EV	\$19.54	\$17.48	\$17.13	\$16.21	10.5 x 7
25102EV	\$20.30	\$18.94	\$17.37	\$16.42	10.5 x 9
25103EV	\$21.16	\$19.98	\$18.21	\$16.25	12 x 10
25104EV	\$22.62	\$20.95	\$19.27	\$17.11	16 x 12 (4c)



**LOCKING NIGHT DEPOSIT BAG
CURVED EXPANDED VINYL**

	25	50	100	300	
25001EV	\$20.77	\$19.55	\$17.76	\$16.00	10.5 x 9
25002EV	\$21.01	\$19.84	\$17.98	\$16.22	12 x 10 (4c)

Expanded Vinyl Colors



All bank bags are made in the USA and engineered to order. We offer sequential numbering, locks with varied key options, and the ability to easily customize and change sizes.



**HORIZONTAL BANK BAG
LAMINATED NYLON**

	150	300	600	1200	
21002LN	\$ 3.86	\$ 3.36	\$ 2.97	\$ 2.68	10.5 x 5.5
21004LN	\$ 4.50	\$ 4.07	\$ 3.66	\$ 3.15	11 x 6

(4c)



**CURVED ZIPPER BAG
LAMINATED NYLON**

	100	300	600	1200	
241LN	\$ 4.59	\$ 3.98	\$ 3.61	\$ 3.22	10.5 x 5.5

(4c)



**LOCKING NIGHT DEPOSIT BAG
STRAIGHT LAMINATED NYLON**

	25	50	100	300	
25101LN	\$ 21.87	\$ 19.97	\$ 18.26	\$ 17.40	10.5 x 7
25102LN	\$ 21.89	\$ 20.36	\$ 18.65	\$ 17.79	10.5 x 9
25103LN	\$ 24.88	\$ 23.09	\$ 21.20	\$ 19.11	12 x 10
25104LN	\$ 27.30	\$ 25.69	\$ 23.28	\$ 20.87	16 x 12

(4c)



**LOCKING NIGHT DEPOSIT BAG
CURVED LAMINATED NYLON**

	25	50	100	300	
25001LN	\$ 23.21	\$ 22.13	\$ 20.15	\$ 17.98	10.5 x 9
25002LN	\$ 24.50	\$ 23.21	\$ 21.33	\$ 19.05	12 x 10

(4c)

Laminated nylon is tougher and the more durable of the two materials. Expanded Vinyl is a faux leather-like material, and is a little more cost effective.

Laminated Nylon Colors



NEOPRENE COLORS

#06 Red PMS 187	#127 Garnet PMS 201	#22 Maroon PMS 209	#26 Texas Orange PMS 159	#104 Orange PMS 151	#76 Blaze Orange (Neon)	#133 Mustard PMS 117	#134 Golden Rod PMS 122	#114 Bright Yellow	#129 Citron PMS 381
#124 Mint PMS 7472	#141 Ice Green PMS 337	#140 Sea Green PMS 7465	#48 Spruce PMS 7470	#74 Jungle Green PMS 5545	#91 Evergreen PMS 7728	#33 Deep Green PMS 568	#02 Emerald PMS 3145	#03 Lime PMS 2420	#50 Fluor. Green PMS 2285
#70 Aqua PMS 2230	#72 Teal PMS 314	#132 Tropical PMS 319	#131 Dark Tropical PMS 638	#130 Ocean Blue PMS 298	#121 Sky Blue PMS 542	#18 Electric Blue PMS 2144	#19 Royal Blue PMS 2728	#59 Navy PMS 2767	#144 Indigo PMS 7699
#41 Hot Pink PMS 674	#05 Rose PMS 233	#04 Magenta PMS 234	#123 Orchid PMS 2352	#29 Violet PMS 512	#73 Fuchsia PMS 7679	#89 Dark Purple PMS 2104	#143 Lilac Breeze PMS 2099	#142 Periwinkle PMS 7675	#145 Something Blue PMS 2177
#115 Pastel Pink PMS 700	#136 Bubble Gum PMS 190	#135 Perfect Pink PMS 7424	#137 Neon Coral PMS 812	#138 Coral PMS 1777	#139 Light Coral PMS 177	#92 Grey PMS 7537	#93 Ash PMS 7545	#122 Slate PMS 425	#15 Black
	#25 Off White	#13 Beige PMS 452	#12 Brown PMS 7603	#126 Canteen PMS 5757	#66 Fall Camo	#20 Spring Camo			

Additional 10% Upcharge

TEXTURES & TREATMENTS *Additional Charges Apply*

#146 Denim	#128 Burlap	#148 Suede'ish Smoke	#147 Suede'ish Bourbon	#150 Heathered Athletic	#149 Heathered Charcoal	4 Color Process	Duplex

BIAS COLORS



4CP BIAS PATTERNS *Pre-printed, Additional Charges Apply*



4CP CUSTOMIZABLE DESIGNS *Printed on Demand, Additional Charges Apply*



THREAD COLORS



SCUBA FOAM COLORS



#15
Red
PMS 200



#27
Crimson
PMS 2041



#06
Burgundy
PMS 5185



#26
Texas Orange
PMS 1675



#10
Bright Orange
PMS 1655



#08
Yellow
PMS 3945



#07
Lime
PMS 7488



#03
Kelly Green
PMS 348



#18
Forest Green
PMS 3435



#20
Teal
PMS 7719



White



Black



#09
Grey
PMS 421



#25
Light Pink
PMS 678



#14
Neon Pink
PMS 806



#17
Magenta
PMS 2062



#05
Purple
PMS 2105



#12
Navy
PMS 533



#04
Royal Blue
PMS 7686



#16
Neon Blue
PMS 299



#02
Khaki
PMS 4545



#35
Brown
PMS 4705



#19
Green Camo
Additional 10% Upcharge



#24
Tan Camo
Additional 10% Upcharge

ECO TWILL COLORS



#15
Red
PMS 201



#10
Orange
PMS 2026



#04
Royal Blue
PMS 7686



#12
Navy Blue
PMS 539



#03
Spruce
PMS 3435



#22
Avocado
PMS 576



#05
Purple
PMS 669



#06
Maroon
PMS 7428



#36
Brown
PMS 7533



#13
Black

NYLON CLOTH COLORS



#15
Red
PMS 200



#10
Red
PMS 172



#41
Gold
PMS 123



#08
Light Yellow
PMS 3945



#03
Kelly Green



#18
Dark Green
PMS 7735



#04
Royal Blue
PMS 7687



#12
Navy
PMS 539



#05
Purple
PMS 2104



#06
Burgundy
PMS 518



#14
Pink
PMS 213



#09
Grey
PMS 423



White



Black

ZINO YARN COLORS



EXPANDED VINYL COLORS



LAMINATED NYLON COLORS



ORDER INFORMATION

SETUPS

Spot Color Screen Charge: \$45.00 (g) per color.

Four-Color Process Setup: \$45.00 (g) per item.

Screen Charges and Four-Color Process Setups are waived on exact repeat orders within two years.

ARTWORK

Numo adheres to the standard industry definition of reproducible art and reserves the right to accept or reject art depending upon the job.

*Artwork will be proportionally resized to fit maximum imprint area unless otherwise specified within the art file via crop marks or other notation.

Electronic art (spot color): Vector art is preferred for spot color printing. Numo recommends current versions of Adobe® Illustrator® or CorelDRAW®. File should be saved in EPS format and all type in each file should be converted to curves (paths, outlines). JPEG and TIFF files can be acceptable only if sent in high resolution.

Electronic art (4-color process): Numo requires Adobe® Illustrator® (.ai) or Photoshop® (.psd, .tif) files in high resolution or vector art. It is strongly recommended to send fully-layered documents in case any adjustments need to be made. If sending .ai files via email, please include an EPS or PDF version of each file to avoid file corruption.

Camera-ready art (spot color): An enlarged, clean black and white copy is recommended. Non-camera ready art will incur art charges.

Art Charges: \$60.00 (g) per hour.

Separations: \$18.75 (g) per color.

Returned copy of art: \$30.00 (g) per color.

Trademarks & Copyrights

Numo accepts orders for printing as being in full compliance with all applicable laws regarding its usage and assumes no liability for claims or infringements of trademarks, copyrights, patents, and/or personal rights. Products and logos shown in this catalog appear only to illustrate the basic products and the ability to imprint messages and art on them. There is no intention to suggest that the imprints were designed by Numo or that the products with these specific imprints are readily available to any purchaser without express written permission of the owners of any trademarked or copyrighted art, copy, or verbiage.

PERSONALIZATION

Available on all Numo 4CP items, we can make each item unique with a name drop or consecutive numbering. Add \$0.30 (g) per item, and pay the regular 4CP setup fee of \$45.00 (g). No additional setup fees are required. Call factory for more information.

PRECIOUS METAL DECORATIONS, 22K GOLD OR PLATINUM HALOS, AND IMPRINTS

22K non-microwaveable metallic gold or platinum is available and can be applied to most ceramic and glassware items. There is an additional cost for this type of decoration. They are not dishwasher safe and require careful hand washing for lasting durability. Microwave safe gold or platinum is available upon request.

Imprint: Add \$0.50 (g) per imprint side.

ADDITIONAL PRICING INFORMATION

Imprint Color Change	\$20.00 (g) per color
Copy Change	\$35.00 (g) per color
Pms Color Match*	Free
Pre-Production Sample: Screenprint	\$45.00 (g) per color + item cost & freight
Pre-Production Sample: Four-Color Process	\$45.00 (g) per design
Split Shipments	\$10.00 (g) for each shipment after the first
Drop Shipments	\$10.00 (g) per destination
Palletizing	\$20.00 (g) per pallet
Wash-Up Charge	\$20.00 (g)
Less-Than-Minimum	\$50.00 (g)
Rush Service	Call factory prior to placing order.
Distributor Overruns	\$6.25 (g)
Export Papers	\$31.25 (g) per set

DECAL PRICING INFORMATION

If tight registration requires the use of a decal, there is an up charge to our normal pricing and requires additional lead time for your order. For spot color decal pricing, determine the price in the usual manner, then add the decal up charge.

	144	288	576	1008+
One Side Decal	\$0.75	\$0.70	\$0.65	\$0.60
Two Sides or Wrap	\$1.30	\$1.25	\$1.20	\$1.15 (4g)

Screen charges are \$65.00 (g) per color. Four color process decal pricing by quote; please contact factory.

SHIPPING INFORMATION

FOB Texas. Carton dimensions listed in this catalog are for general guidelines; packing can vary based upon quantity.

Shipping Methods: Numo products are typically shipped by Motor Freight Carriers, UPS, Fed Ex, or USPS depending upon shipment weight and destination. Numo will route shipments the best way unless otherwise specified. Fully insured shipments must be clearly stated on order. Glassware and ceramics will incur a charge of \$5.00 (g) per carton for protective cartons when shipping via small package carriers (i.e. UPS, FedEx) to insure safe delivery. This charge will be incorporated in the final freight charges.

California Shipments: See "Proposition 65" information at right.

Inside Delivery: Motor freight carrier charges are for "tailgate" delivery only. There is an additional charge for inside delivery and will be added to the invoice. This service must be requested in writing on the purchase order.

C.O.D Shipments: Not available.

Freight Claims: Title of goods passes to the buyer once goods leave Numo. All goods should be inspected for shortage and/or damage and duly noted by the consignee on the delivery receipt if evident at time of delivery. All claims must be filed with the carrier within 15 days of receipt of shipment. Numo will assist as much as possible in filing claims but will not be responsible for the payment of such claims.

5-DAY QUICK-SHIP PROGRAM

One color imprint on 1000 pieces or less on select items will ship in 5 full business days after art approval (with approved credit or advance payment). 5-Day Quick-Ship must be specified on the order. Order and art must be received prior to 1:00pm Central Time to count as a business day. No product proofs or paper proofs on quick ship orders. See our website for a list of 5-Day Quick-Ship items.

OTHER ORDER INFORMATION

Acknowledgements: Order acknowledgements are typically emailed after order clarification to avoid misunderstandings and should be carefully examined with regard to all aspects of the order. All orders will be produced as acknowledged and no allowances will be made for failure to correct any discrepancies before production.

Cancellations: In the event an order is cancelled, a cancellation fee of \$37.50 (g) in addition to all charges associated with work already completed will be invoiced.

Returns or Adjustments: All claims must be made within 30 days of shipment. Return orders will not be accepted without factory approval and a return authorization (RA) number. No allowance will be made for outdated catalogs or incorrect pricing. Numo reserves the right to change prices without notice.

Terms: Prepayment or net 30 days with approved credit. Accounts unpaid after 30 days will incur a late charge of 1% per month on the unpaid balance. Numo accepts Mastercard, Visa, Discover, and American Express for your convenience. Returned checks: \$31.25 (g) per check per return (in addition to any charges from financial institutions).

Overage/Underage: All orders are subject to be shipped at 10% over/under the quantity ordered. Quantities shipped 10% under the ordered quantity will be considered fulfillment of the order. For exact quantity shipments (on catalog quantities only), there is a fee of \$35.00 (g), and prior arrangements must be made with factory.

CALIFORNIA PROPOSITION 65

Numo decorates glass and ceramic products using printing material that will comply with current U.S. Food & Drug Administration (FDA) Guidelines for heavy metal release standards, however California does not recognize the Federal standards and chooses to enforce its own standards.

The Safe Drinking Water and Toxic Enforcement Act of 1986, referred to as Proposition 65, requires that consumers be warned about products that may contain one of over 800 listed substances. Among these substances are lead and cadmium. Proposition 65 does not ban any product from being sold, it just requires a warning to the consumer.

A warning label is all that is required to comply and exact warning language must be used.

Numo offers decorating enamels that comply with Proposition 65 that do not require warning labels:

We offer ceramic enamels that can be used for glass and ceramics with either direct screen printing or decal application. Some colors are not available, please contact factory.

We offer organic based compliant decal options for all items

We offer UV cure compliant inks for many items, contact factory.

We offer four color process sublimation on ceramic mugs.

Numo continues to offer no lead enamels that contain cadmium in certain colors for those customers who require them. We will apply warning labels for all glass or ceramic products destined for California that require these traditional enamels at no additional cost.

It is the distributor's responsibility to notify Numo in advance of shipments that are going to or may end up in the state of California. By the way of this statement, the distributor and the end customer holds Numo harmless from all liability for alleged Proposition 65 violations, including all costs associated with defending any legal claims due to Proposition 65 violations.

CPSIA

In 2008 the Consumer Product Safety Commission passed the Consumer Product Safety Improvement Act of 2008 (CPSIA). CPSIA places tighter regulations on lead content contained in products intended for or marketed towards children under the age of 12. Children's products can be considered any products with packaging, promotions or advertising that displays the product as appropriate for children 12 and younger. Numo offers two products (youth promo bands and Frisbees) that could be intended for use by Children under the age of 12. It is mandatory that these items be marked with the proper tracking information at the factory. All other products offered for sale are intended for adult business marketing purposes. If a distributor or end user plans to distribute or market one of these adult products to Children under the age of 12, we are fully capable of meeting the lead content requirements and adding the proper tracking information to the product, but must be informed by the purchaser at the time of the order.

It is the distributor's responsibility to notify Numo in advance of shipments that are marketed or intended for use by children under the age of 12. By the way of this statement, the distributor and the end customer holds Numo harmless from all liability for alleged CPSIA violations, including all costs associated with defending any legal claims due to CPSIA violations.

RESPONSIBLE BUSINESS PRACTICES

Fair Labor: Kolder, Inc. DBA Numo, is proud to be a member of the Fair Labor Association. To find out more about the FLA, please visit www.fairlabor.org.

Product Testing: Results of independent laboratory tests of Numo materials and items can be found on our web site at www.numomfg.com.

Protecting our Environment: Numo is continually updating our physical facilities with energy-efficient improvements, as well as the continual implementation of our internal recycling program.

WHAT IS A NUMONIAN?

We at Numo call ourselves “Numonians.”

We’ve been around for some time now. *Numo was founded in 1962.*

In 2007, Kolder purchased Numo. *Kolder was founded as a family business in 1982.*

We remain a family business today.

WE STILL MAKE THINGS

We have three facilities in North America and we don’t contract our neoprene manufacturing. That means ***customization, small minimums, and products that don’t look like anything else in the industry.***

So...what does it mean to be a Numonian? It’s not easy to define, but ***here’s what you’ll find some of us doing on any given day:***

- » Three days a week, our trainer puts us through **lunchtime workouts.**
- » Two days a week, our **nurse practitioner** is in the office offering a **zero-cost health clinic.** Our families can take part along with us. From strep tests to school physicals, she’s got us covered.
- » We can take advantage of a **401(k) matching** program to help us plan for our post-Numo days.
- » We are provided with low cost **health insurance.**

we ♥ NUMO!

Bye!

OH...DON'T FORGET TO CHECK
OUT OUR OTHER CONCEPTS:

**CITY CUT & SEW
UP YOUR STANDARD
CONTINUED**

