

METROPAK

THE SUSTAINABLE
BAG SOURCE

2020 CATALOG

UNIQUE SUSTAINABLE BAG OPTIONS





MADE TO ORDER BAGS SINCE 1976

Metropak is celebrating its 44th year in business, and has been a trusted supplier to distributors for almost 30 years! Its owners, Eric Grossman & Edward Hanson, have been friends since elementary school and have both been with the company for over 25 years. Since 1997, they have co-owned and managed Metropak and have made it a point to keep customer service Priority #1. As a result, the company is the highest rated bag supplier in the industry and has consistently maintained its 5-Star ASI rating and A+ Sage rating every year.

Having started in the industry when plastic was the most popular corporate choice for bags, the two owners have seen a lot of changes in their business. Every year more and more distributors are asked for sustainable bag options. And the company is very committed to manufacturing as many environmentally sustainable options as possible.

Offering USA made & sustainable bags with competitive pricing is a priority for the company. This year Metropak has introduced OceanPoly™. This new material is made from 25% recycled plastics collected in heavy ocean pollution source areas. Because the material involves clean-up of coastal areas and waterways that feed into the oceans, the company sees it as the best long-term solution to our growing marine plastic problem.

“We have never been more excited about the industry and our future. Our new OceanPoly™ product is not only a genuine solution to the huge marine plastics problem, but it creates a great story for our distributors. Buying bags and packaging made from OceanPoly™ creates a market in poorer coastal communities that have no waste collection, and indirectly employs people to collect and sort these plastics for recycling. It is a terrific example of how businesses and conscious capitalism can work to keep our environment clean!”

Thank You!
Eric & Edward

TABLE OF CONTENTS

OceanPoly™ Tote Bags	4-6
OceanPoly™ Mailers	7
Patch Handle Bags	8-9
Fold-over Reinforced Die-Cut Handle Bags	10
Soft Loop Handle Bags	11
Non Reinforced Econo and Frosted Die-Cut	12
4-Color Process Printed Poly Bags	13
Poly Mailing/Shipping Envelopes	14-15
The “ROCK” Bags	16
T-Shirt Bags	17
Poly-draw Bags & Hotel Bags	18
Wave Top	19
HALLOWEEN Bags	20
Header Bags	21
Rag Bags and Die Cut Rag Bags	22-23
Paper Shopping Bags	24-25
Paper Lunch & Paper Merchandise Bags	26
Custom Paper Mailers	27
Non-Woven Reusable Tote Bags	28-30
TISSUE PAPER, Plain & Printed	31
Import Non-Woven Reusable Totes	32-33
Laminated Woven Muscle Tote Shopping Bags	34
Laminated RPET - Non-Woven Polypropylene Shopping Bags	35
Import Drawstring Bags, Plastic Clip Handle Bags	36
Laminated Euro Shopping Bags	37
About Us and Small Quantity Printing Information	38
Large Quantity Printing & Off Shore Manufacturing Information	39



introducing
bags & mailers made with
OceanPoly™



What is OceanPoly™?

OceanPoly™ is one of the best solutions to our marine plastics problem. OceanPoly™ contains a minimum of 25% recycled marine plastic (recovered from HDPE bottles and plastic bags) which have been collected from ocean pollution source areas, including beaches and waterways that flow into the oceans. OceanPoly™ can be used in manufacturing many different types recyclable packaging, including plastic bags and poly mailers.

Why use bags & mailers made with OceanPoly™?

The real question is, why not? We all benefit from cleanup of our oceans and waterways. Once plastic makes it into the deep sea, it is nearly impossible to collect on a large scale, and has degraded to the point that it has very little or no commercial use or value. Collecting plastic garbage near its source, in ocean areas like beaches and waterways that flow into our seas, is our best solution to stop the growing marine plastic problem we face today. By using products produced with OceanPoly™ you are making a statement that you care!



Marine plastic has become a global problem and is detrimental to our environment and marine life. Visit OceanPoly.com or scan the QR code here for more information.

An extended benefit...

Supporting the cleanup effort creates jobs for those in economically challenged regions. Populations like Haiti, Indonesia, the Philippines, Mexico's Yucatan Peninsula and the Dominican Republic. Using products made from OceanPoly™, creates demand and financially incentivizes local populations to collect materials such as HDPE and PET, which can be recycled efficiently.

By choosing OceanPoly™, you are choosing to invest in others, help protect marine life and tackle the ocean pollution problem at its source. Look for bags and packaging with the OceanPoly™ logo.

OceanPoly™ bags and mailers are certified by SCS, the premier organization for post consumer recycled content verification.




let's make waves together



OceanPoly™ Patch Handle Bags



This bag is reusable, recyclable and contains a minimum of 25% recycled OceanPoly™ material. Scan QR Code or visit OceanPoly.com for more information.

This stock endorsement will be added to your imprint on OceanPoly™ bags.



OPPH0912

OPPH1215

OPPH1518

OPPH1820

Small Quantity 500 Minimum		Bag Size (WxH)	Pack	WT/M	BLANK	500	1,000	1,500	2,500	Plate Charge	Imprint Size	5AG
OPPH0912S	OceanPoly Patch Handle Bag 2.5 mil	9" x 12"	500	31	.35	.65	.58	.55	.53	45	5 x 5	
OPPH1215S	OceanPoly Patch Handle Bag 2.5 mil	12" x 15"	500	42	.41	.75	.67	.64	.62	66	6 x 6	
OPPH1518S	OceanPoly Patch Handle Bag 2.5 mil	15" x 18"	500	61	.47	.81	.74	.70	.66	98	8 x 8	
OPPH1820S	OceanPoly Patch Handle Bag 2.5 mil	18" x 20"	500	61	.56	.87	.80	.76	.73	98	8 x 8	

Small Quantity Production: 10 business days from art approval. For rush orders please inquire.

Printing: 1 color, 1 side included, 25% ink coverage, standard ink color. Second side imprint 15¢ per bag(E), Additional imprint color 15¢ per bag (E) (due to possible registration challenges, multiple color art must be reviewed prior to submitting order). Limit: 2 colors. (Custom non metallic PMS match \$70/G)

Over/under run allowance: 500 - 2,500 = 10%

Large Quantity 3,000 Minimum		Bag Size (WxH)	Pack	WT/M	3,000	5,000	7,500	10,000	15,000	Plate Charge 1 side	2 side	Imprint Size	5C2G
OPPH0912	OceanPoly Patch Handle Bag 2.5 mil	9" x 12"	1000	31	.37	.30	.26	.23	.20	94	169	5 x 5	
OPPH1215	OceanPoly Patch Handle Bag 2.5 mil	12" x 15"	1000	42	.44	.35	.32	.29	.27	72	129	6 x 6	
OPPH1518	OceanPoly Patch Handle Bag 2.5 mil	15" x 18"	500	61	.52	.44	.40	.37	.34	107	192	8 x 8	
OPPH1820	OceanPoly Patch Handle Bag 2.5 mil	18" x 20"	500	61	.61	.53	.48	.44	.41	107	192	8 x 8	

Large Quantity Production: 3 weeks from art approval. For rush orders please inquire. (Lead time may be longer during peak season, Sept.-Dec.)

Printing: 1 color, 2 sides, 50% ink coverage. Solid "blocks" of ink are discouraged, lighter ink coverage and smaller imprint sizes are recommended for the best results.

For each additional imprint color (up to 2 additional colors), add as follows per bag:

3,000	5,000	7,500	10,000	15,000
.10¢	.07¢	.05¢	.03¢	.02¢

5E

Over/under run allowance: 3,000 - 15,000 = +/- 20%

PMS Inks: \$95/g charge for custom non-metallic color on orders less than 5,000. Over 20 standard ink colors available at no charge. Refer to page 38.

Plates: Plate charges listed in price grid are per color and/or copy and indicate a recommended print size. For larger imprint, see plate charges on page 39.

Note: Due to irregular surface smoothness from recycled content, heavy ink coverage is not recommended.





OceanPoly™ Die-cut Handle Bags (Non-reinforced)



This stock endorsement will be added to your imprint on OceanPoly™ bags.

This bag is reusable, recyclable and contains a minimum of 25% recycled OceanPoly™ material. Scan QR Code or visit OceanPoly.com for more information.



OPL0912

OP0912

OP1215

OP1518

OP1820

- Material:** 2.5 mil white OceanPoly™ material made from 25% recycled marine plastic.
- Features:** Sturdy tote bag with 3.5" x 1" non-reinforced die-cut handle. Reusable and 100% Recyclable.
- Printing:** 1 color, 2 sides, 50% ink coverage. Solid "blocks" of ink are discouraged, lighter ink coverage and smaller imprint sizes are recommended for the best results.
For each additional imprint color (up to 2 additional colors), add as follows per bag:

3,000	5,000	7,500	10,000	15,000	
.10¢	.07¢	.05¢	.03¢	.02¢	5E
- Over/under run allowance:** 2,000 - 15,000+ = 20%.
- PMS inks:** \$95/g charge for custom non-metallic color on orders less than 5,000. Over 20 standard ink colors available at no charge. Refer to page 38.
- Plate:** Plate charges listed in price grid are per color and/or copy and indicate a recommended print size. For larger imprint, see plate charges on page 39.
- Production:** 3-4 weeks from art approval. For rush order please inquire. (Lead time may be longer during peak season, September-December)



Note: Due to irregular surface smoothness from recycled content, heavy ink coverage is not recommended.

Large Quantity 3,000 Min		Bag Size (WxH)	PACK	WT/M	3,000	5,000	7,500	10,000	15,000	Plate Charge		Imprint Size	5C2G
										1 side	2 side		
OPL0912	OceanPoly Litter Bag 2.5 Mil	9 x 12	1000	16	.39	.33	.27	.23	.21	94	169	5" x 5"	
OP0912	OceanPoly Die-Cut Tote Bag 2.5 Mil	9 x 12	1000	16	.39	.33	.27	.23	.21	94	169	5" x 5"	
OP1215	OceanPoly Die-Cut Tote Bag 2.5 Mil	12 x 15	1000	27	.48	.38	.33	.27	.25	72	129	6" x 6"	
OP1518	OceanPoly Die-Cut Tote Bag 2.5 Mil	15 x 18	750	41	.54	.47	.40	.35	.32	107	192	8" x 8"	
OP1820	OceanPoly Die-Cut Tote Bag 2.5 Mil	18 x 20	500	58	.65	.54	.47	.42	.39	107	192	8" x 8"	



OceanPoly™ Mailers



This stock endorsement will be added to your imprint on OceanPoly™ mailers.

This mailer is reusable, recyclable and contains a minimum of 25% recycled OceanPoly™ material. Scan QR Code or visit OceanPoly.com for more information.



OPM0912S

OPM1215S

OPM1419S

OPM1924S

Small Quantity 500 Minimum		Bag Size (WxH+Lip)	Pack	WT/M	BLANK	500	1,000	1,500	2,500	Plate Charge	Imprint Size	5AG
OPM0912S	OceanPoly Mailing Envelopes	9" x 12" + 2	500	23	.28	.58	.50	.48	.46	45	5 x 5	
OPM1215S	OceanPoly Mailing Envelopes	12" x 15" + 2	500	37	.33	.65	.59	.57	.54	66	6 x 6	
OPM1419S	OceanPoly Mailing Envelopes	14" x 19" + 2	500	51	.41	.72	.67	.65	.62	98	8 x 8	
OPM1924S	OceanPoly Mailing Envelopes	19" x 24" + 2	250	85	.59	1.05	.99	.95	.91	98	8 x 8	

Small Quantity Production: 10 business days from art approval. For rush orders please inquire.

Printing: 1 color, 1 side included, 25% ink coverage, standard ink color. Second side imprint 15¢ per bag(E), Additional imprint color 15¢ per bag (E) (due to possible registration challenges, multiple color art must be reviewed prior to submitting order). Limit: 2 colors. (Custom non metallic PMS match \$70/G)

Over/under run allowance: 500 - 2,500 = 10%

Large Quantity 3,000 Minimum		Bag Size (WxH+Lip)	Pack	WT/M	3,000	5,000	7,500	10,000	15,000	Plate Charge	Imprint Size	5C2G
					1 side	2 side						
OPM0912	OceanPoly Mailing Envelopes	9" x 12" + 2	1,000	23	.37	.30	.27	.24	.23	72 129	6 x 6	
OPM1215	OceanPoly Mailing Envelopes	12" x 15" + 2	500	37	.46	.38	.34	.33	.30	77 136	7 x 7	
OPM1419	OceanPoly Mailing Envelopes	14" x 19" + 2	500	51	.54	.47	.43	.38	.36	107 192	8 x 8	
OPM1924	OceanPoly Mailing Envelopes	19" x 24" + 2	250	85	.73	.64	.60	.55	.53	118 205	10 x 10	

Large Quantity Production: 3 weeks from art approval. For rush orders please inquire. (Lead time may be longer during peak season, Sept.-Dec.)

Printing: 1 color, 2 sides, 50% ink coverage. Solid "blocks" of ink are discouraged, lighter ink coverage and smaller imprint sizes are recommended for the best results.

For each additional imprint color (up to 2 additional colors), add as follows per bag:

3,000	5,000	7,500	10,000	15,000	
.10¢	.07¢	.05¢	.03¢	.02¢	5E

Over/under run allowance: 3,000 - 15,000 = 20%

PMS Inks: \$95/g charge for custom non-metallic color on orders less than 5,000. Over 20 standard ink colors available at no charge. Refer to page 38.

Plates: Plate charges listed in price grid are per color and/or copy and indicate a recommended print size. For larger imprint, see plate charges on page 39.

Note: Due to irregular surface smoothness from recycled content, heavy ink coverage is not recommended.



Low minimum Patch Handle Bags

Strongest Handle Available! This heavy 2.5 mil bag is constructed with a 4 mil patch welded around the handle area for extra durability!

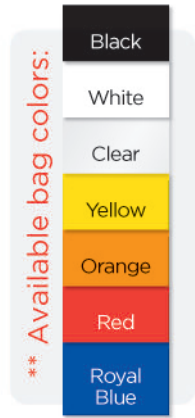


Printing: 1 color, 1 side included, 25% ink coverage, standard ink color. Second side imprint 15¢ per bag(E), Additional imprint color 15¢ per bag (E) (due to possible registration challenges, multiple color art must be reviewed prior to submitting order). Limit: 2 colors. (Custom non metallic PMS match \$70/G)

Plate: One plate per color and/or copy.

Packaging: 500 per case - Weight per 1000, see grid below

Small Quantity Production: 10 business days from art approval. For rush orders please inquire.



Small Quantity 500 Min	PACK	WT/M	Blank	500	1,000	1,500	Plate Charge	Imprint Size	4AG
• PH01S	500	31	.22	.55	.50	.48	45	5" x 5"	
•• PH02S	500	42	.30	.63	.59	.57	66	6" x 6"	
• PH02GS	500	46	.32	.64	.61	.58	66	6" x 6"	
•• PH03S	500	61	.41	.72	.67	.65	98	8" x 8"	
• PH04S	500	85	.55	.93	.90	.87	98	8" x 8"	

• Available in white only •• Available in all colors.

custom made to order Patch Handle Bags

Strong 4 mil patch reinforced handle



Bag Colors: • Available: White and clear only.
•• Available in all colors: White, Clear, Yellow, Black, Royal Blue, Red, and Orange.
Custom PMS bag colors available by custom quote.

** Available bag colors shown on page 8.

Printing: 1 color, 2 sides, 50% ink coverage, (up to 6 color printing available with special quote).
For each additional imprint color (up to 2 additional colors), add per bag:
2,000 3,000 5,000 7,500 10,000 15,000
.15¢ .10¢ .07¢ .05¢ .03¢ .02¢ 6E

PMS Inks: \$95/g charge for custom non-metallic color on orders less than 5,000.
Over 20 standard ink colors available at no charge. Refer to page 38.

Plate: Plate charges listed in price grid are per color and/or copy and indicate a recommended print size. For larger imprint, see plate charges on page 39.

Production: 3 weeks from art approval. For rush order please inquire.
(Lead time may be longer during peak season, September-December)

**PATCH HANDLE BAGS
ARE MADE WITH
DURAPLAST™**
Superior bag strength & print quality
15% Recycled Content
100% Recyclable
Made from Natural Gas
No Crude Oil

Large Quantity 2,000 Min		PACK	WT/M	2,000	3,000	5,000	7,500	10,000	15,000	Plate Charge		Imprint	6C2G
										1 side	2 side	Size	
Medium Weight 1.75 mil													
• PH001	Patch Handle 1.75 mil	9w x 12h	1000	28	.39	.33	.27	.23	.21	.18	94	169	5" x 5"
• PH002	Patch Handle 1.75 mil	12w x 15h	1000	36	.44	.38	.31	.29	.26	.23	72	129	6" x 6"
• PH002G	Patch Handle 1.75 mil	12w x 15h x 4g	1000	39	.47	.39	.32	.30	.27	.24	72	129	6" x 6"
• PH003	Patch Handle 1.75 mil	15w x 18h x 4g	500	51	.54	.44	.38	.36	.33	.31	107	192	8" x 8"
• PH005	Patch Handle 1.75 mil	20w x 19h x 4g	500	71	N/A	.52	.46	.44	.40	.38	107	192	8" x 8"
Heavy Duty Reusable 2.5 mil													
• PH001H	Patch Handle 2.5 mil	9w x 12h	1000	31	.41	.35	.28	.25	.23	.20	94	169	5" x 5"
•• PH002H	Patch Handle 2.5 mil	12w x 15h	1000	42	.48	.40	.34	.32	.28	.26	72	129	6" x 6"
• PH002GH	Patch Handle 2.5 mil	12w x 15h x 4g	1000	46	.49	.42	.36	.33	.30	.27	72	129	6" x 6"
•• PH003H	Patch Handle 2.5 mil	15w x 18h x 4g	500	61	.58	.51	.45	.41	.38	.35	107	192	8" x 8"
• PH005H	Patch Handle 2.5 mil	20w x 20h x 6g	500	85	N/A	.64	.58	.54	.51	.47	107	192	8" x 8"

Custom size bags and film gauges available by custom quote. **Over/under run allowance: 2,000 - 15,000 = 20%**

made to order

Foldover Reinforced Handles

Available in 1.75 mil Medium Weight and Heavy 2.5 mil



Important information and available bag colors shown on Pg 11.

Large Quantity 2,000 Minimum PACK WT/M 2,000 3,000 5,000 7,500 10,000 15,000 Plate Charge Imprint 6C2G
 1 side 2 side Size

Medium Gauge 1.75 mil

• DC710R	Reinforced Die Cut 1.75 mil	7.5w x 10h	1000	15	N/A	.30	.23	.20	.17	.15	94	169	5" x 5"
• DC00R	Reinforced Die Cut 1.75 mil	9w x 12h	1000	18	.39	.31	.25	.21	.19	.17	94	169	5" x 5"
• DC01R	Reinforced Die Cut 1.75 mil	12w x 15h	1000	28	.45	.38	.30	.27	.25	.22	72	129	6" x 6"
• DC11R	Reinforced Die Cut 1.75 mil	12w x 15h x 4g	1000	31	.46	.38	.31	.28	.26	.23	72	129	6" x 6"
• DC02R	Reinforced Die Cut 1.75 mil	15w x 18h	1000	39	.51	.43	.38	.33	.30	.27	107	192	8" x 8"
• DC03R	Reinforced Die Cut 1.75 mil	16w x 18h x 4g	750	44	N/A	.46	.38	.35	.32	.30	107	192	8" x 8"
• DC04R	Reinforced Die Cut 1.75 mil	20w x 20h x 5g	500	62	N/A	.57	.48	.45	.42	.39	107	192	8" x 8"

Heavy Gauge 2.5 mil

• DC00H	Reinforced Die Cut 2.5 mil	9w x 12h	1000	23	.40	.33	.27	.23	.20	.18	94	169	5" x 5"
• DC01H	Reinforced Die Cut 2.5 mil	12w x 15h	750	36	.46	.40	.34	.31	.27	.24	72	129	6" x 6"
• DC11H	Reinforced Die Cut 2.5 mil	12w x 15h x 4g	750	38	.48	.42	.36	.33	.30	.26	72	129	6" x 6"
• DC02H	Reinforced Die Cut 2.5 mil	15w x 18h	500	50	.54	.48	.42	.37	.34	.31	107	192	8" x 8"
• DC03H	Reinforced Die Cut 2.5 mil	16w x 18h x 4g	500	57	N/A	.52	.44	.40	.36	.34	107	192	8" x 8"
• DC04H	Reinforced Die Cut 2.5 mil	20w x 20h x 5g	250	79	N/A	.65	.57	.52	.47	.45	107	192	8" x 8"

• Available in white and clear •• Available in all colors

Custom size bags and film gauges available by custom quote. **Over/under run allowance: 2,000 - 15,000 = 20%**

made to order Soft Loop Handle Bags

Reusable 2.5 mil



SL003

SL001

SL002

SL1212

CLEAR STADIUM BAGS AVAILABLE!
Maximum imprint size allowable by NFL is 3.5" x 4.5"

Material: 2.5 mil low density polyethylene

Handle Colors: White, Black, Red, and Frosted Clear.

Features: Soft Loop Handle is comfortable to carry and perfect for tradeshow. Custom size bags and film gauges available by custom quote.
Over/under run allowance: 3,000 - 15,000 = 20%

Printing: 1 color, 2 sides, 50% ink coverage, (up to 6 color printing available with special quote). Bag prices are the same for 1 or 2 side print. Please specify 1 or 2 side printing.

For each additional imprint color (up to 2 additional colors), add per bag:

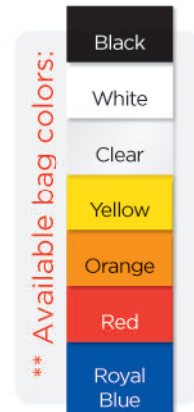
3,000	5,000	7,500	10,000	15,000
.10¢	.07¢	.05¢	.03¢	.02¢

5E

PMS Inks: \$95/g charge for custom non-metallic color on orders less than 5,000. Over 20 standard ink colors available at no charge. Refer to page 38.

Plate: Plate charges listed in price grid are per color and/or copy and indicate a recommended print size. For larger imprint, see plate charges on page 39.

Production: 4 weeks from art approval. For rush order please inquire. (Lead time may be longer during peak season, September-December)



Soft-Loop Handle Bags		Pack	WT/M	3,000	5,000	7,500	10,000	15,000	Plate Charge	Imprint	5C2G	
								1 side	2 side	Size		
••	SL001	13w x 16h x 4g	500	49	.56	.48	.45	.41	.39	72	129	6" x 6"
••	SL002	16w x 18h x 6g	500	65	.63	.58	.53	.49	.46	107	192	8" x 8"
••	SL003	20w x 20h x 5g	500	85	.75	.67	.63	.58	.54	107	192	8" x 8"

Clear Stadium Tote Bag		Pack	WT/M	3,000	5,000	7,500	10,000	15,000	Plate Charge	Imprint	5C2G	
								1 side	2 side	Size		
•••	SL1212	12w x 12h x 6g	500	42	.52	.46	.40	.37	.33	72	129	6" x 6"

• Available in white •• Available in all colors ••• Available in clear

Non-Reinforced Die-cut Handle Bags

Frosted Clear Die-cut Handle Bags

Available bag colors:

White Clear



ET0912



ET1215



ET1518



FD1518



FD1215



FD0912



Material: ET items - 1.75 Low Density Polyethylene. (9"x12" 1.25 mil) White & Clear.
FD items - 2 mil Frosted Clear High Density Polyethylene.

Features: A sturdy light weight bag with 3.5" x 1" die-cut handle. Custom size bags and film gauges available by custom quote.
Over/under run allowance: 2,000 - 15,000 = 20%

Important information on Pg 11.

Large Quantity 2,000 Minimum		Bag Size	PACK	WT/M	2,000	3,000	5,000	7,500	10,000	15,000	Plate Charge		Imprint Size	6C2G
											1 side	2 side		
ET0912	Econo - Tote Bag 1.25 mil	9w x 12h	1000	10	.37	.29	.22	.18	.16	.14	94	169	5" x 5"	
ET1215	Econo - Tote Bag 1.75 mil	12w x 15h	1000	24	.44	.35	.28	.24	.22	.19	72	129	6" x 6"	
ET12154	Econo - Tote Bag 1.75 mil	12w x 15h x 4g	1000	27	.46	.36	.30	.26	.24	.21	72	129	6" x 6"	
ET1518	Econo - Tote Bag 1.75 mil	15w x 18h	750	36	.50	.41	.36	.32	.29	.26	107	192	8" x 8"	
ET15184	Econo - Tote Bag 1.75 mil	15w x 18h x 4g	750	40	.52	.43	.38	.33	.30	.28	107	192	8" x 8"	
ET2020	Econo - Tote Bag 1.75 mil	20w x 20h x 6g	500	62	N/A	.55	.48	.44	.40	.37	107	192	8" x 8"	
FD0912	Frosted Die Cut 2 mil	9w x 12h	750	36	.38	.31	.25	.20	.18	.17	94	169	5" x 5"	
FD1215	Frosted Die Cut 2 mil	12w x 15h	750	40	.45	.37	.30	.26	.24	.22	72	129	6" x 6"	
FD1518	Frosted Die Cut 2 mil	15w x 18h x 4g	500	62	.53	.47	.40	.34	.32	.30	107	192	8" x 8"	

Foldover Reinforced Die-Cut Handle Bags

Available on other bag styles and sizes with custom quote

Award Winning Print Quality



Size: DC01RP: 12" w x 15" h and DC02RP: 15" w x 18" h. Special sizes available with special quote.

DC02RP

Material: 1.75 mil white low density polyethylene

Features: Fold-over reinforced 3.5" x 1" die-cut handle

Printing: Price includes 4 color process print on two sides. Suggested imprint sizes listed below. Larger coverage areas available with special quotation. All prices are estimates and pending final art review.

Over/under Allowance: 10,000-25,000 = 20%

Plates: Process Plates Costs are additional, Art must be reviewed by factory for exact estimates. Approximate plate cost for process print is \$225.00 (g) PER COLOR PER SIDE. Please submit artwork for estimates. Catalog Plate Pricing does not apply!

Production: 5 to 6 weeks after proof approval. (Lead time may be longer during peak season, September-December)

4 Color Process Printing

Large Quantity 10,000 Minimum		Bag Size	PACK	WT/M	10,000	15,000	20,000	25,000	Imprint Area	4C
DC01RP	Reinforced Die Cut 1.75 mil	12w x 15h	1000	28	.63	.49	.41	.35	11" x 11"	
DC02RP	Reinforced Die Cut 1.75 mil	15w x 18h	1000	40	.69	.55	.47	.41	13" x 13"	

Poly Mailing & Shipping Envelopes

“Deliver Your Brand to the Customers Doorstep”

MADE WITH DURAPLAST™

Superior bag strength & print quality



15% Recycled Content

100% Recyclable

Made from Natural Gas

No Crude Oil

100% ink coverage and four color process print available.

Please call for custom quote.



SE0609

SE0912



Popular for E-commerce and promotional mailings. Our Poly Mailers are water resistant and rugged. Made from a strong proprietary co-extruded duraplast polyethylene blend. Contains a minimum of 15% recycled content and once used, they are 100% recyclable when sorted with other LDPE products. USPS approved.

*Double adhesive tape available.
5,000 Minimum, inquire for pricing.*



SE1013

SE1215

SE1419

Material: Rugged 2.5 mil co-extruded white exterior/gray interior polyethylene with 20% recycled content.

Features: USPS approved material. Permanent adhesive closure.

Over/under Allowance: 2,000-15,000 = 20%

Printing: Price includes 1 color, 2 side printing, 50% ink coverage
For each additional imprint color (up to 2 additional colors), add as follows per bag.

2,000	3,000	5,000	7,500	10,000	15,000
.15¢	.10¢	.07¢	.05¢	.03¢	.02¢

6E

PMS inks: \$95/g charge for custom non-metallic color on orders less than 5,000. Over 20 standard ink colors available at no charge. Refer to page 38.

Plate: Plate charges listed in price grid are per color and/or copy and indicate a recommended print size. For larger imprint, see plate charges on page 39.

Production: 4 weeks from art approval. For rush order please inquire. (Lead time may be longer during peak season, September-December)



Large Quantity 2,000 Min	Bag Size	WT/M	Pack	2,000	3,000	5,000	7,500	10,000	15,000	Plate Charge		Imprint Size	
										1 side	2 side		
SE0609	Tuffpak Shipping Envelope	6w x 9h + 2 lip	13	1000	.37	.29	.23	.20	.18	.16	94	169	5" x 5"
SE0912	Tuffpak Shipping Envelope	9w x 12h + 2 lip	23	1000	.40	.35	.27	.23	.20	.18	72	129	6" x 6"
SE1013	Tuffpak Shipping Envelope	10w x 13h + 2 lip	26	500	.42	.38	.31	.28	.25	.23	72	129	6" x 6"
SE1215	Tuffpak Shipping Envelope	12w x 15.5h + 2 lip	36	500	.48	.43	.35	.30	.28	.25	77	136	7" x 7"
SE1419	Tuffpak Shipping Envelope	14w x 19h + 2 lip	49	500	.54	.52	.44	.40	.35	.34	107	192	8" x 8"
SE1924	Tuffpak Shipping Envelope	19w x 24h + 2 lip	87	250	N/A	.67	.60	.55	.50	.46	118	205	10" x 10"

6C2G

ROCK BAG®

Made with 30% Limestone and 20% Recycled Materials.

Reusable, Degradable, and 100% Recyclable.

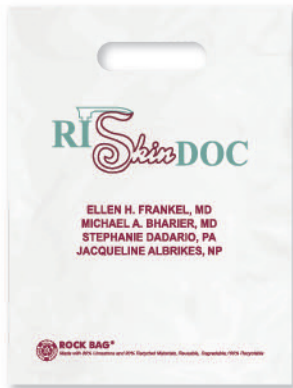
Produced from 50% Natural Gas, 30% limestone and 20% post industrial recycled polyethylene.

This material is landfill degradable, tested under ASTM D5526 standard.

Made with Intelliplas® (visit intelliplas.com for more information).



RBL0912



RB0912



RB1215



RB15184

Material: 2.5 mil white Intelliplas® materials. Due to imperfection in materials, heavy ink coverage is not recommended.

Features: Made using revolutionary Intelliplas® material with 3.5" x 1" non-reinforced die-cut handle. Reusable, 100% Recyclable, Degradable, and uses 50% less non-renewable resources.
Over/under run allowance: 2,000 - 15,000+ = 20%.

Printing: 1 color, 2 sides, 50% ink coverage. Solid "blocks" of ink are discouraged, lighter ink coverage and smaller imprint sizes are recommended for the best results.

For each additional imprint color (up to 2 additional colors), add as follows per bag:

	2,000	3,000	5,000	7,500	10,000	15,000
	.15¢	.10¢	.07¢	.05¢	.03¢	.02¢

6E

PMS inks: \$95/g charge for custom non-metallic color on orders less than 5,000. Over 20 standard ink colors available at no charge. Refer to page 38.

Plate: Plate charges listed in price grid are per color and/or copy and indicate a recommended print size. For larger imprint, see plate charges on page 39.

Production: 3-4 weeks from art approval. For rush order please inquire. (Lead time may be longer during peak season, September-December)



This stock logo will be added to your imprint at no additional charge with same imprint color.

Important California Notice: California law prohibits the sale of plastic packaging and plastic products that are labeled with the terms 'biodegradable', 'degradable' or 'decomposable', or any form of those terms, or imply in any way that the plastic will break down, biodegrade or decompose in a landfill or other environment. These restrictions apply to all sales in or into the state of California.

Large Quantity 2,000 Min			PACK	WT/M	2,000	3,000	5,000	7,500	10,000	15,000	Plate Charge		Imprint Size	6C2G
Code	Description	Dimensions									1 side	2 side		
RB0912	Die-Cut Rock Bag	9w x 12h	1000	21	.40	.35	.28	.25	.22	.19	94	169	5" x 5"	
RB1215	Die-Cut Rock Bag	12w x 15h	500	35	.48	.43	.36	.32	.29	.25	72	129	6" x 6"	
RB15184	Die-Cut Rock Bag	15w x 18h x 4g	500	57	.64	.59	.51	.47	.43	.39	107	192	8" x 8"	
RBL0912	Litter Rock Bag	9w x 12h	1000	21	.40	.35	.28	.25	.22	.19	94	169	5" x 5"	

T-Shirt Bags

Print up to 6 colors
please call for custom quote



TS1222L

Economy .9 mil High Density (White)



TS1222M

Medium Weight 1.75 mil (White)



TS1222MC

Medium Weight 1.75 mil (Clear)

Size: 12" w x 7" g x 22" h

Material: Available in .9 mil high density, and 1.75 mil low density polyethylene.

Bag colors: TS1222L White, TS1222M White, TS1222MC Clear

Features: Grocery style plastic bags with strong handles. Dispenser tabs available for item TS1222L only. Add \$7/M (E) 50 bags per tab. Must specify tabs on order.

Over/under Allowance: 2,000-15,000 = 20%

Printing: 1 color, 1 side only, 50% ink coverage (Up to 6 color printing available with special quote at 25,000+)
For each additional imprint color (up to 2 additional colors), add as follows per bag:

2,000	3,000	5,000	7,500	10,000	15,000
.15¢	.10¢	.07¢	.05¢	.03¢	.02¢ 6E

PMS inks: \$95/g charge for custom non-metallic color on orders less than 5,000. Over 20 standard ink colors available at no charge. Refer to page 38.

Plate: Plate charges listed in price grid are per color and/or copy and indicate a recommended print size. For larger imprint, see plate charges on page 39.

Production: 4 weeks from art approval. For rush order please inquire. (Lead time may be longer during peak season, September-December)

Large Quantity 2,000 Min			Bag Size	PACK	WT/M	2,000	3,000	5,000	7,500	10,000	15,000	Plate Charge	Imprint Size	6C2G
TS1222L	White T-Shirt Bag	.9 mil HDPE	12w x 7g x 22h	1000	28	.55	.41	.33	.28	.23	.19	107	8" x 8"	
TS1222M	White T-Shirt Bag	1.75 mil LDPE	12w x 7g x 22h	1000	38	.66	.50	.42	.36	.32	.29	107	8" x 8"	
TS1222MC	Clear T-Shirt Bag	1.75 mil LDPE	12w x 7g x 22h	1000	38	.64	.49	.41	.35	.31	.28	107	8" x 8"	

Poly-Draw Bags

- Material:** Low Density Polyethylene White or Clear. Colors available, inquire for pricing.
- Features:** Clear Plastic draw closure cinches closed at top to contain material and goods. Custom size bags and film gauges available by custom quote.
- Over/under Allowance:** 2,000-15,000 = 20%
- Printing:** 1 color, 1 side, 50% ink coverage, up to 6 color printing available with special quote. For each additional imprint color (up to 2 additional colors), add as follows per bag:

2,000	3,000	5,000	7,500	10,000	15,000
.15¢	.10¢	.07¢	.05¢	.03¢	.02¢
- PMS inks:** \$95/g charge for custom non-metallic color on orders less than 5,000. Over 20 standard ink colors available at no charge. Refer to page 38.
- Plate:** Plate charges listed in price grid are per color and/or copy and indicate a recommended print size. For larger imprint, see plate charges on page 39.
- Production:** 4 weeks from art approval. For rush order please inquire. (Lead time may be longer during peak season, September-December)



Large Quantity 2,000 Min												Plate Charge		Imprint Size	6C2G
Mil Thickness	PACK	WT/M	2,000	3,000	5,000	7,500	10,000	15,000	1 side	2 side					
PD001	Poly Draw	9w x 13h	1.75 mil	1000	18	.40	.34	.29	.26	.23	.19	94	169	5" x 5"	
PD002	Poly Draw	12w x 16h x 4g	1.75 mil	500	32	.45	.42	.35	.32	.29	.25	72	129	6" x 6"	
PD003	Poly Draw	16w x 18h x 3g	1.75 mil	500	45	.55	.50	.41	.38	.35	.30	107	192	8" x 8"	
PD005	Poly Draw	20w x 20h x 6g	1.75 mil	500	68	N/A	.61	.50	.46	.42	.39	107	192	8" x 8"	

Hotel Bags - Lighter gauge & more economical

PD002L	Poly Draw	12w x 16h x 4g	1.25 mil	1000	21	N/A	.37	.31	.28	.25	.22	72	129	6" x 6"
PD003L	Poly Draw	16w x 18h x 3g	1.25 mil	500	30	N/A	.45	.36	.33	.30	.26	107	192	8" x 8"
PD006L	Poly Draw	19w x 22h x 3g	1.75 mil	500	61	N/A	.56	.49	.47	.43	.38	107	192	8" x 8"



PD005



PD003L



PD006L

PD001

Wave Top Plastic Take Out Bags



Images shown are for reference only. Wave Top bag comes in WHITE only.



WT2119



WT1816

Material: 1.5 mil high density polyethylene. **WHITE ONLY.** Custom colors and sizes available with custom quote, 25,000 minimum.

Features: Sturdy plastic take out bag with 2" punch holes available in 2 popular sizes with large bottom gusset.

Printing: 1 color, 1 side, 50% ink coverage, up to 6 color printing available with special quote.

Over/under run allowance: 2,000 - 15,000 = 20%

For each additional imprint color (up to 2 additional colors), add as follows per bag:

2,000	3,000	5,000	7,500	10,000	15,000
.15¢	.10¢	.07¢	.05¢	.03¢	.02¢ 6E

PMS inks: \$95/g charge for custom non-metallic color on orders less than 5,000. Over 20 standard ink colors available at no charge. Refer to page 38.

Plate: Plate charges listed in price grid are per color and/or copy and indicate a recommended print size. For larger imprint, see plate charges on page 39.

Production: 3-4 weeks from art approval. For rush order please inquire. (Lead time may be longer during peak season, September-December)

Large Quantity 2,000 Min		Bag Size	PACK	WT/M	2,000	3,000	5,000	7,500	10,000	15,000	Plate	Imprint Size	6CG
WT1816	Medium Wave Top	18w x 16h x 9g	500	39	.62	.50	.39	.34	.30	.28	107	8" x 8"	
WT2119	Large Wave Top	21w x 19h x 10g	500	51	.71	.59	.46	.41	.36	.33	107	8" x 8"	

Halloween Bags

Choose from any of our stock designs.

Stock Design #1



Stock Design #2



Stock Design #3



Stock Design #4



Stock Design #5



HBEO1C (White)



HBPP03



HBEO1C (Yellow)
Patch Handle
with perforated Coupon

HBPP02 (Yellow)

All bags include safety tips on back side



Perforated Tear-off Coupon

Small Quantity 500 Minimum • 1 Color Only

		Bag Size (WxHxG)	Pack	BLANK	500	1,000	1,500	2,000	5A
HBPP01	Halloween Patch Handle 2.5 mil (Yellow or Orange) Stock Design 1, 2 or 3	12" x 15"	500	N/A	.59	.49	.49	.47	
HBPP02	Halloween Patch Handle 2.5 mil (Yellow with stock design #4)	12" x 15"	500	.34	.67	.61	.59	.57	
HBPP03	Halloween Patch Handle 2.5 mil (Orange with stock design #5)	12" x 15"	500	.34	.67	.61	.59	.57	
Post Print Production: 10 days from art approval. For rush order please inquire.				Plate charge \$48 G (10" x 2" Max Imprint Size)					

Large Quantity 3,000 Minimum

		Bag Size (WxHxG)	Pack	3,000	5,000	7,500	10,000	15,000	5C
HBPP01	Halloween Patch Handle 2.5 mil (Yellow or Orange) Stock Design 1, 2 or 3	12w x 15h	500	.37	.31	.27	.25	.22	
HBPP02	Halloween Patch Handle 2.5 mil (Yellow with stock design #4)	12w x 15h	500	.54	.43	.36	.32	.28	
HBPP03	Halloween Patch Handle 2.5 mil (Orange with stock design #5)	12w x 15h	500	.54	.43	.36	.32	.28	
HBEO1C	Halloween Bag with Coupon 2.5 mil (Yellow with stock design #4)	12w x 15h+3g	500	.55	.41	.35	.31	.27	

Custom Production: 3 weeks from art approval. For rush order please inquire.

Features: White, Yellow or Orange bag (specify on order). Available with any of the 5 stock designs on front of bag and safety tips on back.
Over/under run allowance: 2,000 - 10,000 = 20%

Printing: Price includes 1 color stock design with 10"x2" imprint in same ink color. Specify stock design #1-5 on order.
For one additional imprint color, add as follows per bag:

	2,000	3,000	5,000	7,500	10,000	
	.15¢	.10¢	.07¢	.05¢	.03¢	5E

Plate Charge: 10" x 2" plate for coupon, quantity of 2,000 or more \$48 (G)

*for 4 color process printing,
call for quote*

Header Bags

Packed on plastic header for easy distribution.



HPDK0912



(Custom Header Bag)

for 4 color process printing, call for quote

- Material:** 1.25 mil Low Density Polyethylene. White or Clear.
- Features:** A sturdy light weight bag with 3.5" x 1" die-cut handle. Packed on plastic header for easy distribution of promotional materials or samples (pack 100/header). Custom size bags and film gauges available by custom quote.
- Over/under run allowance: 3,000 - 15,000 = 20%**
- Printing:** 1 color, 2 sides, 50% ink coverage, up to 6 color printing available with special quote. For each additional imprint color (up to 2 additional colors), add as follows per bag:

3,000	5,000	7,500	10,000	15,000
.10¢	.07¢	.05¢	.03¢	.02¢ 5E
- PMS inks:** \$95/g charge for custom non-metallic color on orders less than 5,000. Over 20 standard ink colors available at no charge. Refer to page 38.
- Plate:** Plate charges listed in price grid are per color and/or copy and indicate a recommended print size. For larger imprint, see plate charges on page 39.
- Production:** 3-4 weeks from art approval. For rush order please inquire. (Lead time may be longer during peak season, September-December)

Large Quantity 3,000 Min		Bag Size	PACK	WT/M	3,000	5,000	7,500	10,000	15,000	Plate Charge 1 side 2 side	Imprint Size	5C2G
HPDC0912	Tote Bag on Header 1.25 mil	9w x 12h	1000	13	.30	.22	.20	.17	.15	94 169	5" x 5"	
HPDC1215	Tote Bag on Header 1.25 mil	12w x 15h	1000	21	.35	.28	.24	.21	.18	72 129	6" x 6"	
HPDK0915	Doorknob Bag on Header 1.25 mil	9w x 15h	1000	16	.31	.25	.21	.18	.15	94 169	5" x 5"	
HPNP0720	Newspaper Bag on Header 1.25 mil	7w x 20h	1000	20	.32	.26	.22	.19	.16	102 177	4" x 12"	



ragbags

REUSE. REPURPOSE.

U.S. PATENT 9,132,939 and U.S. PATENT 9,132,940
International Patents Pending

What is a RagBag?

RagBags are made from a revolutionary bio-based material that is soft, strong, and absorbent. They can be reused and repurposed, eliminating the need for plastic or paper bags. When or if you do throw them away, they're biodegradable.

Soak up a spill, dust off furniture, or use it as a lunch bag.

RagBags are so much more than just shopping bags. Their super-absorbent fabric makes them ideal for soaking up spills or daily cleaning around the house. RagBags can replace paper towels and can be used hundreds of different ways. And they're washable, which means you can reuse them over and over again.

RagBags are 8x more absorbent than a standard paper towel.

A single RagBag when reused can replace two full rolls of paper towels, reducing waste and saving precious resources.

The endlessly useful, environmentally responsible fabric bag is available in original grocery style and die-cut handle.

Original Grocery Style Degradable Ragbags:

Made with 57G BPI certified compostable cellulose non-woven fabric. Materials are super absorbent and bio-based. These bags will hold up to 16 lbs. This unique bag is soft and sturdy.

Die-Cut Handle Degradable RagBags:

Made with sturdy 65G plant based non-woven cellulose and corn based PLA blend. These bags are sturdy and will hold up to 8 lbs. Available in 3 sizes.

100's of uses



ragbags.com



ragbags™

REUSE. REPURPOSE.

The only tote bag designed to be repurposed as a rag.

Washable, Reusable, Degradable, Plant-based



RBAG1221T
Custom imprint on front



Back side stock imprint
(optional 10,000 or more)



Die-Cut Handle Ragbags
(Available in 3 sizes)

Original Grocery Style Ragbags

- Material:** White only. Degradable bio-based cellulose non-woven. Featuring grocery bag style handles or 3.25" x 1 die-cut hole.
- Printing:** Quantities of 5,000 or less limited to 1 color, 1 side imprint, light ink coverage. 10,000 or more can be printed on two sides at same price, add one additional plate charge.
- Plate:** Due to specialized inks required for this item, ink colors are limited to: Black, Reflex Blue, Navy Blue, Process Blue, Pink PMS #212, Hunter Green close to PMS #349, Lime Green close to PMS #362, Red close to PMS #485.
- Plate:** One plate per color and/or copy.
- Production:** Ragbags production time will vary according to quantity order. 500-5,000 ragbags production time: 10 working days from art approval. 10,000- or more, 4-5 weeks from art approval. Production time may be longer during peak season. Inquire for rush orders.

Important Printing Information:
The Ragbag printing process requires printing over multiple layers of material. Due to wrinkles in the Ragbag fabric, and its absorberency, it is characteristic of the final product that there may be slight imperfections and small wrinkles in the imprint. It will have a somewhat weathered look. Solid "blocks" of ink are discouraged, lighter ink coverage and smaller imprint sizes are recommended for the best results. All Ragbags are printed with the Ragbag Trademarked logo and reusability information.

Grocery Style 500 Minimum		Bag Size	PACK	Blank	500	1,000	1,500	2,500	5,000	10,000	25,000	Imprint Size	Plate Charge	BCG
RBAG1221T	Ragbag Grocery Style	12w x 7g x 20.5h	250	.74	1.29	1.22	1.19	1.17	1.13	.83	.69	70	7" x 7"	
Die-Cut Style 500 Minimum		Bag Size	PACK	Blank	500	1,000	1,500	2,500	5,000	10,000	25,000	Plate Charge	Imprint Size	BCG
RBAG1013DC	Die-cut Handle Ragbag	10w x 13h	500	.33	.72	.66	.62	.59	.57	.36	.28	45	5" x 5"	
RBAG1316DC	Die-cut Handle Ragbag	13w x 16h	250	.45	.90	.82	.79	.76	.74	.45	.37	70	7" x 7"	
RBAG1518DC	Die-cut Handle Ragbag	15w x 18h	250	.50	.95	.87	.83	.80	.79	.53	.43	70	7" x 7"	

Over/under run allowance: 500 - 5,000 = 10%.

For general information, including stock ink colors see pages 38-39

METROPAK - 2020
metropak.com

Low minimum Paper Shopping Bags



Material: 40% Recycled Natural kraft or 40% Recycled white kraft paper. **Features:** Twisted paper handles

Printing: 1 color, 1 side included, 25% ink coverage, standard ink color. Second side imprint 20¢ per bag(e), Additional imprint color 15¢ per bag(e) (due to possible registration challenges, multiple color art must be reviewed prior to submitting order).

Limit for 2 or more color imprint is 5,000. Refer to page 25 for pricing.

Minimum: 500 unless packed 200 per case which requires 600 min.

Plate: One plate per color and/or copy.

Production: 10 business days from art approval; 15 business days during peak season. Inquire for rush orders.



Small Quantity 500 Minimum		Size	Pack	WT/M	Blank	500/600	1,000	1,500	2,500	Plate Charge	Imprint Size	SAG
NK0708	Recycled Natural Kraft Shopping Bag	7 x 3 x 8.25	250	66	.34	.64	.61	.57	.56	45	5 x 5	
NK0810	Recycled Natural Kraft Shopping Bag	8 x 4.35 x 10.25	250	91	.44	.71	.66	.63	.61	45	5 x 5	
NK1013	Recycled Natural Kraft Shopping Bag	10 x 4.35 x 13	250	116	.53	.79	.74	.72	.69	66	6 x 6	
NK1612	Recycled Natural Kraft Shopping Bag	16 x 6 x 12	200	182	.69	.95	.89	.87	.84	92	10 x 6	
GB1110	Recycled Natural Kraft Tote Bag	11 x 10 x 3.25	250	90	.40	.69	.62	.60	.57	45	5 x 5	
GB1914	Recycled Natural Kraft Tote Bag	19.75 x 14 x 4.75	200	180	.59	.91	.85	.81	.78	98	8 x 8	
WK0708	40% Rec White Kraft Shopping Bag	7 x 3 x 8.25	250	66	.35	.70	.66	.62	.60	45	5 x 5	
WK0810	40% Rec White Kraft Shopping Bag	8 x 4.35 x 10.25	250	91	.44	.76	.70	.68	.64	45	5 x 5	
WK1013	40% Rec White Kraft Shopping Bag	10 x 4.35 x 13	250	116	.54	.82	.76	.74	.69	66	6 x 6	
WK1612	40% Rec White Kraft Shopping Bag	16 x 6 x 12	200	182	.71	.98	.92	.88	.85	92	10 x 6	

All shopping bags contain minimum 40% post consumer recycle materials.

Custom Paper Bags

40% Recycled White Kraft



*1 or 2 side print,
Same Bag Price!!!*



40% Recycled Natural Kraft



Paper shopping bags are available printed with up to 6 colors. Inquire for pricing on 3-6 colors or artwork with heavy ink coverage or screens. Any bag can be tinted 100% to make a custom colored bag, please inquire for pricing. Inquire for pricing on quantities over 25m. For bags exceeding 25% ink coverage, inquire for pricing.

- Material:** 40% Recycled Natural kraft or 40% Recycled white kraft paper
- Handles:** Matching twisted paper
- Over/under Allowance:** 10,000-24,999 = 20%
- Printing:** 1 color, 2 sides, 25% ink coverage.
For one additional imprint color, add as follows per bag:
10,000 15,000
.03¢ .02¢ 2E
For 3 colors or more, please inquire for pricing.
- Plate:** Plate charges listed in price grid are per color and/or copy and indicate a recommended print size.
- Production:** 6 weeks from art approval. Longer during peak season, (Aug-Dec.)

Large Quantity 10,000 Minimum		Bag Size (W x G x H)	Pack	WT/M	10,000	15,000	Plate Charge 1 side	2 side	Imprint Size	2D2G
NK00B	Recycled Natural Kraft Shopping Bag	5.25 x 3.5 x 8	250	109	.42	.41	52	98	4x4	
NK01B	Recycled Natural Kraft Shopping Bag	8 x 4.75 x 10	250	121	.46	.43	52	98	5x5	
NK02B	Recycled Natural Kraft Shopping Bag	10 x 5 x 13	250	145	.49	.44	72	129	5x7	
NK03B	Recycled Natural Kraft Shopping Bag	13 x 7 x 17	250	195	.57	.54	107	192	8x8	
NK04B	Recycled Natural Kraft Shopping Bag	16 x 6 x 12	250	185	.54	.52	98	186	10x5	
NK06B	Recycled Natural Kraft Shopping Bag	16 x 6 x 19	200	238	.63	.60	107	192	8x8	
NK07B	Recycled Natural Kraft Shopping Bag	14 x 9 x 16	200	255	.64	.62	107	192	8x8	
NK08B	Recycled Natural Kraft Shopping Bag	18 x 7 x 18	200	258	.63	.61	107	192	8x8	
WK00B	Recycled White Kraft Shopping Bag	5.25 x 3.5 x 8	250	109	.47	.45	52	98	4x4	
WK01B	Recycled White Kraft Shopping Bag	8 x 4.75 x 10	250	121	.49	.46	52	98	5x5	
WK02B	Recycled White Kraft Shopping Bag	10 x 5 x 13	250	145	.55	.51	72	129	5x7	
WK03B	Recycled White Kraft Shopping Bag	13 x 7 x 17	250	195	.69	.66	107	192	8x8	
WK04B	Recycled White Kraft Shopping Bag	16 x 6 x 12	250	185	.64	.61	98	186	10x5	
WK06B	Recycled White Kraft Shopping Bag	16 x 6 x 19	200	238	.74	.72	107	192	8x8	
WK07B	Recycled White Kraft Shopping Bag	14 x 9 x 16	200	255	.75	.72	107	192	8x8	
WK08B	Recycled White Kraft Shopping Bag	18 x 7 x 18	200	258	.77	.75	107	192	8x8	

Custom Paper Merchandise and Lunch Bags



All Uncoated Paper Bags are 100% Recyclable



MBN1218



MBW1215



SON06



SOW12

Merchandise Bags

Grocery/Lunch Bags

Material: Natural kraft or white kraft paper

Printing: 1 color, 1 side, 25% ink coverage.
For one additional imprint color, add as follows per bag:

6,000	12,000	25,000	
.03¢	.02¢	.01¢	3E

For bags exceeding 25% ink coverage or 2nd side print, call factory for pricing.

PMS inks: Standard colors FREE; custom \$95/G

Plate: Plate charges listed in price grid are per color and/or copy and indicate a recommended print size.

Production: 4 weeks from art approval.
*(This size requires 5-6 week lead time.) Longer during peak season.

Over/Under Run Allowance: 6,000-24,999 = 20%; 25,000 =15%

* **BUNDLES are paper baled**

Large Quantity 6,000 Minimum		Bag Size (W x G x H)	BUNDLE	WT/M	6,000	12,000	25,000	Plate Charge	Imprint Size	3CG
SON02	2 lbs. Natural Kraft Lunch Sack	4.25 x 2.5 x 7.75	6000	11	.14	.12	.08	65	3x3	
SON04	4 lbs. Natural Kraft Lunch Sack	5 x 3 x 9.75	4000	15	.15	.13	.09	65	4x4	
SON06	6 lbs. Natural Kraft Lunch Sack	5.75 x 3.75 x 11	2000	23	.16	.14	.10	65	4x6	
SON08	8 lbs. Natural Kraft Lunch Sack	6 x 3.75 x 12.5	2000	27	.17	.15	.11	65	5x7	
SON12	12 lbs. Natural Kraft Lunch Sack	7 x 4.5 x 13.75	1000	38	.22	.18	.14	89	6x8	
SON16	1/6 Barrel Nat Kraft Grocery Bag	12 x 7 x 17	500	110	.26	.22	.20	89	6x8	
SOW02	2 lbs. White Kraft Lunch Sack	4.25 x 2.5 x 7.75	6000	11	.14	.12	.09	65	3x3	
SOW04	4 lbs. White Kraft Lunch Sack	5 x 3 x 9.75	4000	15	.17	.15	.10	65	4x4	
SOW06	6 lbs. White Kraft Lunch Sack	5.75 x 3.75 x 11	2000	23	.19	.16	.11	65	4x6	
SOW08	8 lbs. White Kraft Lunch Sack	6 x 3.75 x 12.5	2000	27	.20	.17	.13	65	5x7	
SOW12	12 lbs. White Kraft Lunch Sack	7 x 4.5 x 13.75	1000	38	.26	.22	.17	89	6x8	
MBN069	Natural Kraft Merchandise Bags	6.25 x 9.25	6000	15	.12	.09	.07	65	4x4	
MBN0811	Natural Kraft Merchandise Bags	8.5 x 11	4000	20	.13	.10	.09	72	6x6	
MBN1215	Natural Kraft Merchandise Bags	12 x 15	2000	33	.19	.16	.13	90	7x7	
MBN1218	Natural Kraft Merchandise Bags	12 x 3 x 18	1000	51	.23	.20	.18	98	8x8	
MBN1421	Natural Kraft Merchandise Bags	14 x 3 x 21	1000	66	.29	.25	.23	98	8x8	
* MBW510	White Kraft Merchandise Bags	5 x 2 x 10	1000	15	.17	.13	.10	65	4x4	
MBW069	White Kraft Merchandise Bags	6.25 x 9.25	6000	15	.14	.11	.09	65	4x4	
MBW0811	White Kraft Merchandise Bags	8.5 x 11	4000	20	.17	.14	.12	72	6x6	
MBW1215	White Kraft Merchandise Bags	12 x 15	2000	33	.24	.21	.18	90	7x7	
MBW1218	White Kraft Merchandise Bags	12 x 3 x 18	1000	51	.31	.27	.25	98	8x8	
MBW1421	White Kraft Merchandise Bags	14 x 3 x 21	1000	66	.38	.34	.31	98	8x8	

All Merchandise bags and lunch sack must be ordered in case pack increments.

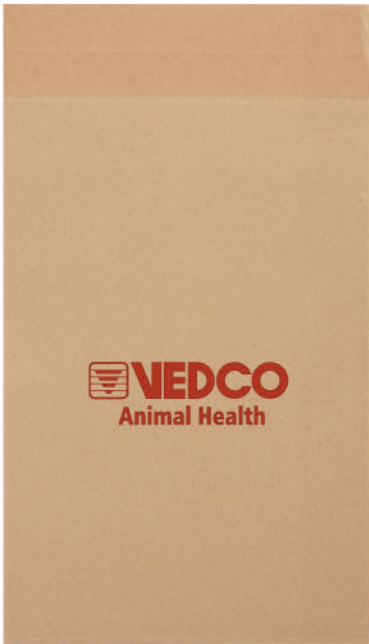
Paper Mailers



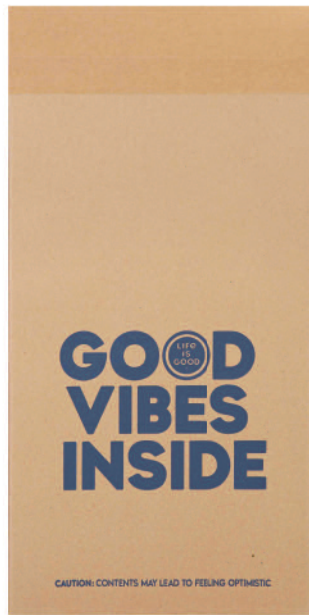
100% Recycled Natural Kraft
Recyclable



PMN1019G



PMN1220G



PMN1019G



PMN1016



PMN0912



PMN0610

- Material:** Heavy uncoated natural kraft **Features:** Single permanent tape closure
- Printing:** 1 color, 1 side included, 25% ink coverage, standard ink color. Second side imprint 20¢ per bag(e), Additional imprint color 20¢ per bag(e) (due to registration limitations, multiple color art must be reviewed prior to submitting order). Limit: 2 colors.
- Minimum:** 500 unless packed 200 per case which requires 600 min.
- Plate:** One plate per color and/or copy.
- Production:** 10 business days from art approval; 15 business days during peak season. Inquire for rush orders.

Small Quantity 500 Minimum		Bag Size (W x G x H)	PACK	WT/M	Blank	500	1,000	1,500	2,500	5,000	Plate Charge	Imprint Size	6AG
PMN0610	Recycled Natural Kraft Mailers	6 x 10	1000	52	.32	.56	.49	.46	.44	.41	65	4x6	
PMN0912	Recycled Natural Kraft Mailers	8.75 x 12	250	84	.46	.73	.65	.62	.59	.57	72	6x6	
PMN1016	Recycled Natural Kraft Mailers	10.5 x 16	250	116	.67	.93	.86	.80	.77	.75	93	7x8	
PMN1019G	Recycled Natural Kraft Mailers	10.5 x 3.75 x 19	200	165	.85	1.13	1.03	.99	.96	.92	118	8x10	
PMN1220G	Recycled Natural Kraft Mailers	12.5 x 4 x 20	200	202	.96	1.28	1.18	1.13	1.09	1.06	118	8x10	

Stock paper mailers must be ordered in case pack increments.

Non-Woven Tote Bags

KALEIDOSCOPE OF COLOR

Add upcharge per bag to screen printed price for heat transfer per side(c):

200	500	1000	1500	2500
1.55	1.48	1.37	1.35	1.25

Pricing applies to NW1612 only.



Most Popular Size! NW1612 Large Tote Shopping Bag

- Size:** 16" w x 6" g x 12" h
- Material:** Non-Woven Polypropylene, 80 gsm; Orange, Red, Hot Pink, Tan Kraft, Lime Green, Ocean Blue, Royal Blue, Navy Blue, White, Black, Forest Green, Chocolate, *Burgundy
- Handles:** 26" standard length. Cross stitched, double-reinforced.
- Features:** Reusable shopping bags constructed with cloth-like non-woven polypropylene. High quality and handsewn, these bags are tear-resistant, water-repellent and long-lasting! Printed in the U.S.A.
- Printing:** 1 color, 1 side included, 25% ink coverage, standard ink color. For Additional ink color, add .40¢ per bag (g). Second side add .40¢ per bag, per color (g). Printing light inks on darker bags may require a white underprint which will incur an additional ink charge. For 3 or more colors, add kaleidoscope full color pricing shown on this page.
- PMS Inks:** Screen printing limited to standard ink colors. See page 39.
- Option:** For black plastic bottom reinforcement add 18¢ (e).
- Imprint Area:** 10" w x 6" h
- Plate:** 1st screen FREE, for orders of 500 bags or more, additional screens \$75(g).
- Packaging:** 100 per case, 130 lbs. per 1000 bags
- Production:** Screen print: 2 weeks from art approval. Heat transfer: 3 weeks from art approval. (Lead time may be longer during peak season, September-December)



6C	Blank	200	500	1000	1,500	2,500
	1.06	2.04	1.71	1.59	1.55	1.48



Available Colors

* Burgundy to be discontinued



Non-Woven Tote Bags

NW0810 Gift Bags

- Size:** 8" w x 4" g x 10" h
- Material:** Non-Woven Polypropylene, 80 gsm
Bag colors: Red, White, Royal Blue, Black, and Forest Green
- Handles:** 15" standard length
- Features:** Reusable shopping bags constructed with cloth-like non-woven polypropylene. High quality and hand sewn, these bags are tear-resistant, water-repellent and long-lasting! Printed in the U.S.A.
- Printing:** 1 color, 1 side included, 25% ink coverage, standard ink color. For Additional ink color, add .40¢ per bag (g). Second side add .40¢ per bag, per color (g). Printing light inks on darker bags may require a white underprint which will incur an additional ink charge. For 3 or more colors, use kaleidoscope full color upcharge shown on this page.
- PMS inks:** Screen printing limited to standard ink colors. See page 39.
- Imprint Area:** 6" w x 6" h
- Plate:** 1st screen FREE, for orders of 500 bags or more, additional screens \$75(g).
- Packaging:** 100 per case, 70 lbs. per 1000 bags.
- Production:** Screen print: 2 weeks from art approval.
Heat transfer: 3 weeks from art approval.
(Lead time may be longer during peak season, Sept-Dec)

Add upcharge per bag to screen printed price for heat transfer per side(c):

200	500	1000	1500	2500
1.52	1.45	1.29	1.25	1.16

Pricing applies to NW0810 size only.



NW0810

6C	Blank	200	500	1,000	1,500	2,500
	.88	1.79	1.47	1.35	1.31	1.26



NW2016 X-Large Tote Bags

- Size:** 20" w x 6" g x 16" h
- Material:** Non-Woven Polypropylene, 80 gsm
Bag colors: Red, White, Royal Blue, and Forest Green
- Handles:** 26" standard length
- Features:** Reusable shopping bags constructed with cloth-like non-woven polypropylene. High quality and hand sewn, these bags are tear-resistant, water-repellent and long-lasting! Printed in the U.S.A.
- Printing:** 1 color, 1 side included, 25% ink coverage, standard ink color. For Additional ink color, add .40¢ per bag (g). Second side add .40¢ per bag, per color (g). Printing light inks on darker bags may require a white underprint which will incur an additional ink charge. For 3 or more colors, add kaleidoscope full color pricing shown on this page.
- PMS inks:** Screen printing limited to standard ink colors. See page 39.
- Imprint Area:** 10" w x 10" h
- Plate:** 1st screen FREE, for orders of 500 bags or more, additional screens \$75(g).
- Packaging:** 100 per case, weight 230 lbs. per 1000 bags.
- Production:** 2 weeks from art approval
Heat transfer: 3 weeks from art approval.
(Lead time may be longer during peak season, September-December)

Add upcharge per bag to screen printed price for heat transfer per side(c):

200	500	1000	1500	2500
1.59	1.55	1.45	1.35	1.25

Pricing applies to NW2016 size only.



NW2016

6C	Blank	200	500	1,000	1,500	2,500
	1.35	2.25	1.85	1.68	1.58	1.55



Available Colors:

* Check availability before placing order.
This size to be discontinued.



NW1213
MEDIUM GROCERY TOTES

Low minimum Non-Woven Reusable Tote Bags

- Size:** NW1213, 12" w x 8" g x 13" h, NW1315, 13" w x 10" g x 15" h
- Material:** Non-Woven Polypropylene, 80 gsm; Black, White, Tan Kraft, Royal Blue, Forest Green, Red and Navy
- Handles:** 15" standard length. Cross stitched, double reinforced.
- Features:** Our grocery tote, the perfect GREEN bag for the grocery and retail marketplace. Constructed with cloth-like non-woven polypropylene. High quality and hand sewn, these bags are tear-resistant, water repellent and long-lasting! Printed in the U.S.A.
- Printing:** 1 color, 1 side included, 25% ink coverage, standard ink color. For Additional ink color, add .40¢ per bag (g). Second side add .40¢ per bag, per color (g). Printing light inks on darker bags may require a white underprint which will incur an additional ink charge. For 3 or more colors, add kaleidoscope full color pricing shown on this page.
- PMS Inks:** Screen printing limited to standard ink colors. See page 38.
- Imprint Area:** NW1213: 7" w x 7" h NW1315: 6" w x 6" h
- Options:** 12" w x 8" g x 13" h, for black plastic bottom reinforcement add 18¢ (e). 13" w x 10" g x 15" h, price includes plastic bottom reinforcement.
- Plate:** 1st screen FREE, for orders of 500 bags or more, additional screens \$75(g).
- Packaging:** 12" w x 8" g x 13" h - 100 per case, weight 160 lbs. per 1000 bags
13" w x 10" g x 15" h - 100 per case, weight 270 lbs. per 1000 bags
- Production:** 2 weeks from art approval. Heat transfer: 3 weeks from art approval. (Lead time may be longer during peak season, September-December)



Tan Kraft
For plastic bottom reinforcement add .18 (E)

6C	Blank	200	500	1,000	1,500	2,500
NW1213 Medium Grocery Tote (80G)	1.16	1.98	1.75	1.51	1.48	1.43
NW1315 Large Grocery Tote (90G)	1.52	2.55	2.09	1.89	1.79	1.75

KALEIDOSCOPE OF COLOR

Add upcharge per bag to screen printed price for heat transfer per side(c):

200	500	1000	1500	2500
1.59	1.55	1.45	1.35	1.25

Pricing applies to bags on this page only.

NW1315 LARGE GROCERY TOTES



Includes bottom reinforcement and sturdy reinforced handle sewn down front and back of bag

Black (NW1315) shown with Kaleidoscope printing.

Plain & Printed Tissue Paper

Over 50 Colors Available!



Did you know?

Our Eco-Friendly Tissue is made with 10% post-consumer fiber. Printed with 100% soy-based inks on custom printed tissue. Any Custom print on white or kraft tissue can be upgraded to print using 100% post-consumer recycled white or kraft tissue, call for special quote.



Colors: **Light colors:** Apricot, Blush, Cool Gray, Cool Mint, Dark Pink, *French Vanilla, *Ivory, *Khaki, Light Blue, Light Gray, Light Pink, Lilac, Mist, Peach, Pistachio, Tan, & Yellow. **Medium colors:** Aloe, Apple Green, Aquamarine, Bright Turquoise, Brown, *Buttercup, Cactus Green, Caribbean Blue, Cornflower, Fiesta Blue, Green Tea, Harvest Gold, Honeysuckle, Island Pink, *Lavender, Lemon, Mulberry, *Olive, Pacific Blue, Peacock Blue, *Purple, Raspberry, Sandstone, Sky Blue, Turquoise, & Willow. **Dark colors:** *Black, Boysenberry, Burnt Orange, *Cabernet, *Cerise, Cherry Red, Cinnamon, *Citrus Green, *Claret, Cobalt Blue, Coral, Eggplant, Flamingo, Goldenrod, Kelly Green, Lagoon Blue, Mandarin Red, *Orange, Pansy, *Parade Blue, Plum, Raw Sienna, Scarlet Red, Slate & Teal. **Deep colors:** *Evergreen, *Holiday Green, *Midnight Blue

Price per ream, 480 sheets per ream.

Minimum order for non-metallic tissue: 10 reams white, tan and selected colors; 20 reams for all others. Minimum order for 2 color print is 30 reams, add \$20 (e) per ream plus additional plate charge. Minimum order for 3 color print is 50 reams, please call for special quotation.

Minimum order for metallic tissue: Printed one color is 30 reams - please call for custom quote.

Printing: 1 color/1 side print, step & repeat, less than 25% ink coverage, non-metalic inks

PMS Ink: Any non metallic PMS match FREE

***10 Ream printed tissue program:** Only colors with asterisks* available with 10 ream minimum.

Metallic Inks: Add 5% to catalog prices for Metallic Ink.

Production: Printed tissue - 6 weeks from final art proof approval. (No rushes available)

Plates: Printing plate required for printed tissue - cost is additional, one plate per color. 10-12 REAMS orders printed 1 color have a plate charge of \$415 (g). 20-50 REAMS have 1 plate per color at \$475-\$850 (g).

Over/under Run Allowance: 20%

Blank Tissue: Lead time, 1-2 Business day (FOB Texas). Minimum order for Blank tissue - 1 ream.

10 Ream Minimum		Size	WT/M	Pack	Blank	10 Ream	20 Ream	30 Ream	40 Ream	50 Ream	6C
TSW01	White or Recycle Kraft Tissue	20" w x 30" h	7	480	52	127	99	86	83	74	Price per Ream
TSC01L	Non-Metallic Colored Tissue - Light	20" w x 30" h	7	480	76	156	112	99	96	88	
TSC01M	Non-Metallic Colored Tissue - Medium	20" w x 30" h	7	480	76	156	119	106	102	94	
TSC01D	Non-Metallic Colored Tissue - Dark	20" w x 30" h	7	480	76	156	138	124	120	108	
TSC01DP	Non-Metallic Colored Tissue - Deep	20" w x 30" h	7	480	76	156	146	133	130	120	
TCSM01	Metallic Colored Tissue	20" w x 30" h	4	200	74	n/a	CALL FOR CUSTOM QUOTE				

Non-Woven

Variety of Styles

Shoulder Handle Shopping Totes

Long Handles!

Large Gusset!

Economy Grocery Tote

INW1213GRB



INW1612



INW1313



INW2016



INW1213GRB

For plastic bottom reinforcement add .18 (E)

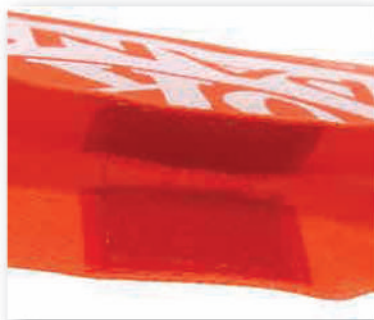
Material: Non woven polypropylene, standard weight 80 GSM. Heavier weight materials available. Please inquire for pricing.

Bag Colors: Black, White, Ivory, Orange, Lime, Burgundy, Hot Pink, Royal Blue, Red, Forest Green, Gray, Ocean Blue, Brown, Navy Blue & Tan. (Violet, Lavender, Powder Blue, Pink, Goldenrod, and custom colors available by custom quote).

Features: The look and feel of cloth without the cost.

Options: Add any of these options to bags on page 33 to build your own bag:

2" x 1" VELCRO CLOSURE



.08¢ per bag(e)

EURO STYLE ROPE HANDLE



.22¢ per bag(e)

7" x 4" POCKET W/ VELCRO CLOSURE



.17¢ per bag(e)

Proofs: Standard proof-PDF. Printed proof sample is available at a charge of \$150(G) plus plate cost. Please allow two additional weeks for printed samples.

Handles: Standard handle length: Approximately 16"-18". For shoulder length (24") handles add .09¢ (E)

Printing: Method: Screen (no half-tones or grey scale). Ink colors: Any PMS color (non reflective) no additional charge. Additional imprint colors: Add .07(e) per bag for each additional ink color. 2nd Side imprint: Add .07(e) per color for 2nd side imprint.

Over/Under Run Allowance: 10%

Plate: One plate charge per color includes front and back if same copy. Set-up Charges: \$75.00(g) per color per copy. Please inquire for artwork requirements.

Lead Time: FOB Los Angeles port, or Dallas, TX approximately 10-11 weeks after proof approval. Factory accepts no responsibility for transportation or customs delays that are beyond our control. **Expedited Service available, inquire for pricing.**

Terms: All off-shore bag orders require a deposit of 50%, balance Net 30 with credit approval.

Non-Woven



Heavy Duty Grocery Tote

INW1315

INW2016
with added velcro closure



Plastic bottom reinforcement included

15 standard colors (all non-woven)



Custom color matches available, inquire for pricing. Higher minimum may be required.

Pricing includes all tariffs at time of printing. Due to possible fluctuation in Tariffs, prices could change without notice.

Large Quantity 10,000 Minimum		Size (W x Gusset x H)	PACK	10,000	15,000	25,000	3C
INW0810	Non Woven Small Tote Bag	8w x 4g x 10h	200	.99	.93	.83	
INW1313	Non Woven Shopping Bag with 18" Handle	13w x 5g x 13h	200	1.14	1.04	.94	
INW1612	Non Woven Medium Tote Bag W/ Shoulder Handle	16w x 6g x 12h	100	1.18	1.13	1.03	
INW2016	Non Woven Large Tote Bag W/ Shoulder Handle	20w x 6g x 16h	100	1.30	1.25	1.13	
INW1213GRB	Non Woven Take Out/ Economy Grocery Bag	12w x 8g x 13h	100	1.28	1.23	1.19	
INW1315	Heavy Duty Grocery Tote	13w x 10g x 15h	100	1.64	1.57	1.46	

Laminated Woven



Made with 20% Recycled Content



Laminated heavy duty woven material

The Ultimate Reusable Shopping Bag
Durable and Washable



IW2016



IW1720



IW0810



IW2016

*custom sizes available,
please call for custom quote*

- Material:** Laminated Woven Polypropylene, 20% recycled content (available in 80% recycled content with special quote).
- Bag Colors:** Any non-metallic PMS color background color included in price. Matte or gloss finish included in price. For custom imprint on side gusset please inquire for special pricing.
- Handles:** 16" standard length, black, white, green, red, blue or yellow.
- Features:** Environmentally friendly and reusable. Sturdy construction and strong handles. Available with a variety of standard handle and trim colors. Water repellent, can be wiped clean with wet cloth. Available with 4 color process OR spot print. Customize functionality by adding velcro, zipper, shoulder length handles or high-end "Euro-Style" rope for a small up-charge.
- Over/Under Allowance:** 10%
- Options:** Euro Style Rope Handles .22¢ (E), Velcro Closure (1" Wide) .07¢ (E), Shoulder Length (24") Handles .11¢ (E)
- Proofs:** Standard proof-PDF. Printed proof samples are available at additional charge of \$300(G) plus plate cost. Please allow two additional weeks for printed samples.
- Printing:** 4 color process or spot on front and back. 100% ink coverage. Matte or gloss finish.
- Plate:** One plate charge per color includes front and back same or different copy.
- Lead Time:** FOB Los Angeles port, or Dallas, TX, 10-12 weeks after proof approval. Factory accepts no responsibility for transportation or customs delays that are beyond our control. **Expedited Service available, inquire for pricing.**
- Terms:** All off-shore bag orders require a deposit of 50%, balance Net 30 with credit approval. Please inquire for artwork requirements.

Pricing includes all tariffs at time of catalog printing. Due to possible fluctuation in Tariffs, prices could change without notice.

Large Quantity 3,000 Mini	Size (W x Gusset x H)	Gauge	Pack	3,000	5,000	7,500	10,000	Plate charge per color	4CG
IW0810	Laminated Woven	8w x 4g x 10h	130 gsm	200	1.78	1.46	1.29	1.01	188
IW1013	Laminated Woven	10w x 5g x 13h	130 gsm	200	1.89	1.60	1.39	1.20	188
IW1612	Laminated Woven	16w x 6g x 12h	130 gsm	150	1.96	1.67	1.48	1.34	275
IW2016	Laminated Woven	20w x 6g x 16h	130 gsm	100	2.10	1.85	1.56	1.45	300
IW1213	Laminated Woven	12w x 8g x 13h	150 gsm	100	1.94	1.64	1.44	1.33	275



Contains a minimum of 80% Recycled Content from Recycled PET Bottles

Laminated RPET & Non-Woven Polypropylene



laminated rpet

NWPETL1516
See additional sizes of Laminated RPET listed below.



NWPPL1316
See additional sizes of Laminated Non-Woven listed below.

Materials: Laminated Non-woven 100gsm, Laminated RPET 120gsm. Contains 80% recycled content.

Bag Colors: Any non-metallic PMS color background color included in price. Matte or gloss finish included in price. For custom imprint on side gusset please inquire for special pricing.

Handles: 18" standard length self handles.

Features: Sturdy construction and strong handles allow for long term reuse. Available with a variety of standard handle and trim colors. Water resistance can be wiped clean with wet cloth. Available with 4 color process OR spot print. Customize functionality by adding velcro, zipper, shoulder length handles or high-end "Euro-Style" rope for a small up-charge. Inquire for pricing.

Over/Under Run Allowance: 10%

Proofs: Standard proof-PDF. Printed proof samples are available at additional charge of \$300(G) plus plate cost. Please allow 2-3 additional weeks for printed samples.

Printing: 4 color process or spot color on front and back. Up to 100% ink coverage. Matte or gloss finish.

Plate: One plate charge per color includes front and back same or different copy.

Lead Time: FOB Los Angeles port, or Dallas, TX, 11-12 weeks after proof approval. Factory accepts no responsibility for transportation or customs delays that are beyond our control. *Expedited Service available, inquire for pricing.*

Terms: All off-shore bag orders require a deposit of 50%, balance Net 30 with credit approval. Please inquire for artwork requirements. *Pricing includes all tariffs at time of catalog printing. Due to possible fluctuation in Tariffs, prices could change without notice.*

Large Quantity 3,000 Min		Size (W x Gusset x H)	Gauge	Pack	3,000	5,000	7,500	10,000	Plate charge per color	4CG
NWPPL0810	Laminated Non Woven PP	8w x 4g x 10h	100 gsm	200	1.67	1.31	1.15	.99	195	
NWPPL1013	Laminated Non Woven PP	10w x 5g x 13h	100 gsm	200	1.81	1.51	1.29	1.19	225	
NWPPL1612	Laminated Non Woven PP	16w x 6g x 12h	100 gsm	100	1.99	1.70	1.50	1.38	250	
NWPPL1316	Laminated Non Woven PP	13w x 6g x 16h	100 gsm	100	2.03	1.73	1.54	1.42	285	
NWPPL1213	Laminated Non Woven PP	12w x 8g x 13h	100 gsm	100	1.98	1.66	1.47	1.37	260	
NWPPTT1315	Laminated Non Woven PP	13w x 10g x 15h	100 gsm	100	2.05	1.75	1.55	1.44	300	

Large Quantity 3,000 Min		Size (W x Gusset x H)	Gauge	Pack	3,000	5,000	7,500	10,000	Plate charge per color	4CG
NWRPETL1013	Laminated RPET	10w x 5g x 13h	120 gsm	200	2.67	1.90	1.78	1.71	225	
NWRPETL1612	Laminated RPET	16w x 6g x 12h	120 gsm	100	3.09	2.19	2.08	2.00	250	
NWRPETL1316	Laminated RPET	13w x 6g x 16h	120 gsm	100	3.27	3.32	2.20	2.12	275	
NWRPETL1213	Laminated RPET	12w x 8g x 13h	120 gsm	100	3.15	2.23	2.12	2.04	260	
NWRPETL1516	Laminated RPET	15w x 5g x 16h	120 gsm	100	3.20	2.29	2.15	2.08	260	

For general information, including stock ink colors see pages 38-39

METROPAK - 2020
metropak.com

Drawstring Bags & Plastic Clip Loop Handle



Material:

Drawstring bags: Low density polyethylene.
Clip loop handle bags: high density polyethylene.

Features:

Drawstring bags: White 3mm cotton drawstring. Color available by special quote.
Clip loop handle bags: Sturdy plastic handles. Available in black or white with cardboard top and bottom reinforcement.
Flexi-Loop Handle bags: Sturdy softloop handles welded to inside of bag. Available in black, white, frosted clear, and red.

Printing:

For Each additional ink color add per bag(E). Up to 3 additional colors.

10M	15M	25M	
.02¢	.015¢	.010¢	3E

 For printing over four colors or four color process, please inquire for pricing.

Plate Charges:

Listed charges are per color for same copy on 2 sides. Please inquire for pricing on heavy ink coverage, different copy on front and back, or custom sizes.

Over/Under Allowance:

20%

Proofs:

Standard proof-PDF. Printed proof samples are available at additional charge of \$250(G) plus plate cost. Please allow two additional weeks for printed samples.

Lead Time:

FOB LA, 11-12 weeks after proof approval.

Terms:

All off-shore bag orders require a deposit of 50%, balance Net 30 with credit approval. Please inquire for artwork requirements.

Pricing includes all tariffs at time of printing. Due to possible fluctuation in Tariffs, prices could change without notice.

Large Quantity 10,000 Min		Size (WxGxHxB)	WT/M	Pack	10,000	15,000	25,000	PLATE COST per COLOR	3CG
IDS1216	Cotton Drawstring Bag, 1.75 mil	12w x 16h x 4g	43	1000	.48	.38	.33	185	
IDS1618	Cotton Drawstring Bag, 1.75 mil	16w x 18h x 4g	52	500	.55	.46	.39	185	
IDS2020	Cotton Drawstring Bag, 1.75 mil	20w x 20h x 5g	79	500	.63	.55	.47	185	
ICL1013	Clip Loop Handle Bag, 2.5 mil	10w x 5g x 13h x 5g	87	500	.64	.56	.49	185	
ICL1612	Clip Loop Handle Bag, 2.5 mil	16w x 6g x 12h x 6g	98	250	.76	.68	.61	185	
ICL1316	Clip Loop Handle Bag, 2.5 mil	13w x 6g x 16h x 6g	108	250	.76	.68	.61	185	
IFS0810	Flexi-Loop Handle Bag, 2.5 mil	8w x 4g x 10h x 4g	55	500	.44	.36	.30	185	
IFS1013	Flexi-Loop Handle Bag, 2.5 mil	10w x 5g x 13h x 5g	80	250	.52	.44	.38	185	
IFS1612	Flexi-Loop Handle Bag, 2.5 mil	16w x 6g x 12h x 6g	90	250	.64	.56	.49	185	
IFS1618	Flexi-Loop Handle Bag, 2.5 mil	16w x 6g x 18h x 6g	110	200	.72	.64	.57	185	

Euro Shopping Bags

NEW.. Add Macrame paper handles to make your white or natural kraft bag 100% recyclable. No additional charge



White kraft bags contain 40% post consumer recycle content. Natural Kraft Bags contain 80% post consumer recycle content. Kraft bags are 100% Recyclable



- Materials:** 157 gsm gloss or matte laminated paper, 170 gsm 40% recycled white kraft, 170 gsm 80% recycled natural kraft.
- Features:** The Euro-Shopping bag has sturdy top and bottom cardboard reinforcements and hand knotted rope handles.
- Handles:** Standard 16" white 1/4" diameter PP rope. Over 20 handle colors available at no additional charge. For 24" shoulder handles add .10¢ per bag (E). Handles length is measured from knot to knot. Paper macrame handles available at no additional charge.
- Printing:** Price includes up to 4 color spot or process printing, 100% ink coverage. Any non-metallic PMS ink, no charge. (Hot stamping available, inquire for pricing).
- Plate:** 1 plate per color, see last column of price list. Art charges are not included. Template available for standard size bags upon request.
- Proofs:** Standard proof-PDF. Printed proof sample is available at a charge of \$250(G) plus plate cost. Allow two additional weeks for printed samples.
- Lead Time:** Total production of 10-12 weeks from proof approval. Factory accepts no responsibility for transportation or customs delays that are beyond our control. **Expedited Service available, inquire for pricing.**
- FOB:** FOB Los Angeles port, or Dallas, TX. **Over/Under Run Allowance:** 10%

Pricing includes all tariffs at time of printing. Due to possible fluctuation in Tariffs, prices could change without notice.

Large Quantity 3,000 Min		Size (WxGxH)	Pack	WT/M	3,000	5,000	7,500	10,000	15,000	Set-upcharge per Color	SCG
ES8410	Matte or Gloss Laminated Euro-Tote	8w x 4g x 10h	200	139	1.63	1.24	1.08	.99	.88	115.00	
ES1013	Matte or Gloss Laminated Euro-Tote	10w x 4.75g x 13h	200	202	1.86	1.46	1.30	1.21	1.10	135.00	
ES1215	Matte or Gloss Laminated Euro-Tote	12w x 4.75g x 15h	100	256	1.97	1.53	1.40	1.31	1.17	135.00	
ES1612	Matte or Gloss Laminated Euro-Tote	16w x 6g x 12h	100	341	2.35	1.79	1.67	1.59	1.44	135.00	
ES8410WR	White Kraft Euro-Tote 40% PCW	8w x 4g x 10h	200	139	1.69	1.29	1.14	1.05	.93	115.00	
ES1013WR	White Kraft Euro-Tote 40% PCW	10w x 4.75g x 13h	200	202	1.94	1.53	1.37	1.29	1.17	135.00	
ES1215WR	White Kraft Euro-Tote 40% PCW	12w x 4.75g x 15h	100	256	2.08	1.63	1.51	1.41	1.27	135.00	
ES1612WR	White Kraft Euro-Tote 40% PCW	16w x 6g x 12h	100	341	2.46	1.91	1.79	1.70	1.56	135.00	
ES8410NR	Natural Kraft Euro-Tote 80% PCW	8w x 4g x 10h	200	139	1.58	1.18	1.03	.94	.83	115.00	
ES1013NR	Natural Kraft Euro-Tote 80% PCW	10w x 4.75g x 13h	200	202	1.55	1.15	.99	.91	.79	135.00	
ES1215NR	Natural Kraft Euro-Tote 80% PCW	12w x 4.75g x 15h	100	256	1.86	1.42	1.29	1.20	1.06	135.00	
ES1612NR	Natural Kraft Euro-Tote 80% PCW	16w x 6g x 12h	100	341	2.21	1.67	1.54	1.45	1.32	135.00	

For general information, including stock ink colors see pages 38-39

METROPAK - 2020 metropak.com

About Us

Ordering Information

- All orders must be received in writing via fax or e-mail.
- For accuracy please include the following:
Item number, style, color and quantity, imprint color and the size of the art.
Ship to address, method of shipping and requested in hand date.
- Your art file must reference your purchase order number to avoid delays. All orders must be accompanied by vector art. See ARTWORK requirements below.
- Unless otherwise noted the imprint will be centered within the printable area of the bag. (Note: due to bag construction this printable area may not be the exact center of the bag.)

Credit Policy

- **New Accounts:** A credit application must accompany or precede your order. Allow 5 days for credit clearance. If you wish to proceed immediately, please enclose a 50% deposit, or your order can be charged to your credit card.
- **Established Accounts:** Net 30 days. Large dollar volume sales require special arrangements.
- Imported orders require a 50% deposit.

VISA, MasterCard and American Express are accepted. The following information must be provided to insure proper billing and order acceptance.

1. Type of credit card (VISA, MasterCard or American Express)
2. Account Number
3. Expiration Date
4. Name as it appears on the credit card.
5. Security code
6. Billing address if different than company address

ARTWORK: All artwork must be vector and submitted via email in either EPS or Adobe Illustrator format. Flexographic printing may sometimes require that modifications be made to the artwork to

accommodate tight registration, these modifications will only be done with customer approval. Any changes will be made at customer's request and jobs requiring art time beyond 15 minutes will be billed \$120(g) per hour of art charge. Please inquire for art specifications on multiple color jobs or jobs with screens.

ACKNOWLEDGEMENTS: All orders are acknowledged with a confirmation by email. Confirmations for printed orders must be signed and returned prior to scheduling order for production.

PROOF: Emailed PDF proofs are sent for new orders or all orders requiring artwork or changes. Printed sample proofs are only available on qualifying orders produced offshore. Proofs are not sent for exact reorders unless specifically requested, additional charge may apply.

CANCELLED ORDERS: In many cases custom-made materials are purchased to produce your order. Once a purchase order is received any costs incurred prior to change or cancellation of an order will be the responsibility of the customer.

SPECIAL PACKAGING: Available by special quotation. We reserve the right to deviate from the standard packaging information provided on our price schedules, unless specific needs are indicated on the order.

SHIPPING: UPS or FedEx Ground will be used for small shipments. Larger shipments will be shipped via truck lines. We reserve the right to determine which carrier will be used if not specified. If purchase order states "will advise" as the ship to address, we must be notified of address five days prior to ship date. Our commitment to on time delivery for sure dated orders is limited to the time prior to pick up by the freight company. Once freight is consigned to freight carrier, we accept no responsibility for any delay of delivery. We do not ship with US Postal Service.

SPLIT SHIPMENTS: Available in full case lots only. Call for pricing.

RESTOCKING CHARGE: A 20% restocking charge may apply on unprinted returned merchandise. No returns will be accepted without a return authorization number.

SMALL QUANTITY PRINTING

These bags are flexo printed or screen printed after the bags are made. This allows smaller quantities and quicker turnarounds.

NORMAL PRODUCTION TIME

*This pertains primarily to the flexographically and screen printed items of this catalog. Seven to ten (10) business days after proof and credit approval. Longer times may be necessary in August, September, and October.

INK COVERAGE

25%, No halftones or heavy ink coverage.

STOCK INK COLORS

Custom PMS ink match, non-metallic match \$70 (G)

POSITION OF IMPRINT

Unless otherwise noted, your imprint will be "centered" within the printable area of the bag which, due to product construction, may not be the exact center of the bag.

ADDITIONAL IMPRINT COLORS

\$.15 (E) for flexographically printed bags.
Artwork must be submitted prior to approval.



SPECIAL SCREEN PRINTING INFORMATION

Stock Ink Colors: White, Black, Royal Blue (close to Reflex Blue), Navy Blue (close to PMS 294), Ocean Blue (close to Process Blue), Hot Pink (close to PMS 232), Ivory (close to PMS 7499), Gray (close to PMS 420), Red (close to PMS 186), Hunter Green (close to 349), Kelly Green (close to PMS 354), Lime Green (close to PMS 361), Orange (close to PMS 165), Burnt Orange (close to PMS 159), Teal (close to PMS 322), Yellow (close to PMS Yellow), Purple (close to PMS 268), Brown (close to PMS 476), Metallic Gold, Metallic Silver. Important: Ink colors will appear differently when printed over colored material. Exact PMS ink match is not available.

BLANKS: Available for immediate shipment in case lots.

SHIPPING: FOB Factory

Large Quantity Domestic Printing Information

PLATE CHARGES:

Plate charges for the standard imprint size are listed with each product on their respective page. If an alternate imprint area is required, the plate charge is subject to change. To print on 1 side, plates are \$1.85 (g) per square inch or \$45 (g) minimum per color, per copy. When printing 2 sides, plates are \$3.33 (g) per square inch or \$90 (g) minimum per color, per copy. Plate charges will double for bag sizes less than 12" wide. To calculate plate charges, measure the overall length * the overall width of each color separately. The resulting area is the plate size for each color. Plates are stored for 3 years upon which they are discarded. During that time, exact reorders will not incur plate charges. For orders requiring more than 3 colors, halftones, or process printing, a custom quote is required.

EYE MARKS:

Manufactured plastic bags require a small mark (approximately 3/16" x 1") be printed on the face of the bag. This is needed to identify where to cut and seal the bag.

OVER/UNDER RUN ALLOWANCE:

Less than 25,000 = 20%; 25,000-50,000 = 15%; 50,000+ = 10%
These production allowances are based on industry standards primarily due to the flexo-web printing process. Special needs can be accommodated, but will require a custom quotation. Material tolerances, bag sizes and thickness can vary by as much as 10%.

PRODUCTION TIME:

Listed separately for each product. Two to six weeks from proof approval; depending on product being ordered.

SHIPPING: FOB Factory

INK COLORS:

Any non-metallic PMS ink color match is free for large quantity orders of plastic bags and poly mailers of 5,000 or more. A PMS Ink match charge of \$95 (G) will apply on all orders below 5,000 and on all merchandise bags, SOS bags and paper shopping bags on page 24-25. Please see page 38 for our standard PMS ink colors.

Off Shore Manufacturing General Information

INK COLORS: Free PMS ink match for non-metallic ink colors.

PLATE CHARGES: Plate charges are per color and in last column listed on their respective pages. Plates are billed at cost and are different for each product. Plates are custom quoted for full ink coverage on plastic bags. One printing plate is required per color per side. Art for PROCESS printing requires one plate per color (4 total) not including additional plates required for possible pms color match (if needed).

RUSH ORDERS: Rush orders must be approved by factory before a firm commitment can be made. Air freight may be required.

FOR QUICKER LEAD TIMES:

See special Expedited Lead Time pricing on appropriate page for each item.

ARTWORK: Process printing requires high-resolution vector artwork sent in on disc with accurate color print. Spot printing requires vector art but can be emailed or uploaded to our ftp site.

PRODUCTION TIMES:

Production time is from date of final art approval and/or proof approval, (not from date order is received) to ENTRY and does not include in land shipping transit time and/or time needed for customs clearance. Factory accepts no responsibility for customs or forwarding delays that are beyond our control.

FOB: Los Angeles port.

TERMS: All offshore manufactured orders require a 50% deposit. Balance net 30 days with credit approval.

OVER/UNDER ALLOWANCE:

Listed on respective pages.
Tolerance: bag sizes and thickness can vary by as much as 10%.



Your #1 source for made to order bags with 2,000 minimums on some styles printed up to 3 colors. We are not "decorators" of bags but rather manufacture a majority of the bags we offer. We also maintain sophisticated prepress operations. As true manufacturers, we are able to deliver the best printing and finest quality possible.

METROPAK

THE SUSTAINABLE
BAG SOURCE

is proud to introduce **OceanPoly™**

an SCS certified material made using collected plastic from ocean waterways and beaches. All OceanPoly™ material contains a minimum of 25% recycled marine plastic.

Marine plastics have become a global problem that is detrimental to the environment and to marine life. OceanPoly™ is our solution.



Visit [Oceanpoly.com](https://oceanpoly.com) or scan the QR code here for more information.

Go to pages 4-7 for more information and pricing on OceanPoly™ bags and mailers.
In 2020, let's make waves together!