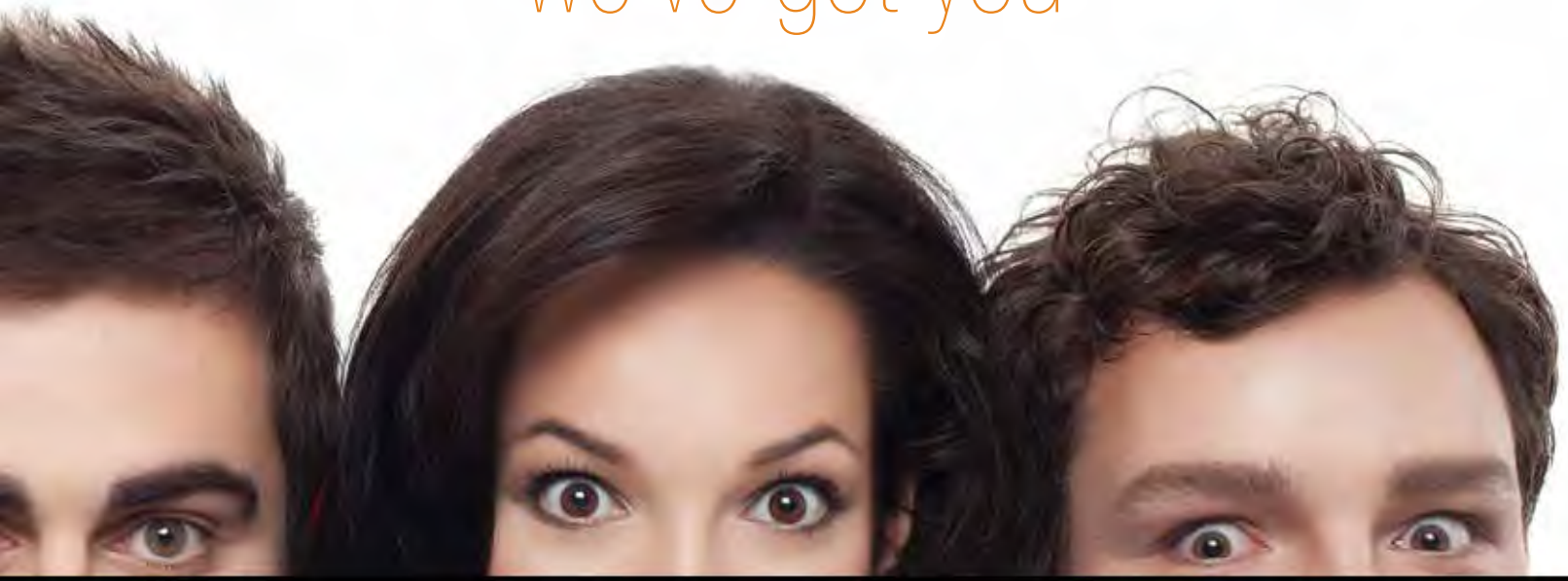


we've got you



COVERED



Index

- 2** iPad® Pro 2 (9.7), Air 2, & Air 1 Cases
- 3** iPad® Pro (12) Cases
- 4** iPad® Mini 2 & 4 Cases
- 5** Kindle® Cases
- 6** Samsung® & Microsoft® Surface Tablet Cases
- 7** Universal, Laptop, & Chromebook® Cases
- 8-9** iPhone® Cases (All Sizes)
- 10** Samsung® & Armband Phone Cases
- 11** Stands & Stylus
- 12-13** Screen Protectors & Accessories
- 14** Challenges & Solutions
- 15** Custom Solutions
- 16-17** General Information

The Colemax Group was established in 1996 as the manufacturer of the case for the original Palm Pilot®. With manufacturing facilities in Asia, and worldwide distribution centers in River Edge, NJ, the Colemax Group is the world's leader in providing the finest in customized carrying case solutions. Whether it is a stock item or a special project, we can provide

“if we can't do it, no one can!”



you with every possible decorating option to meet your customer's needs. Colemax maintains the widest selection of products for mobile electronic devices, with the fastest turnaround in the Promotional Industry.





PC-iPAD6LB Easel Style Case

Case to fit iPad® Air 2

- Made from premium simulated leather
- Sleeper magnet function to optimize battery life
- Secure closure
- Easel style for convenient viewing

Stock Color: Black

NOTE: Also available for iPad® Air 1 and iPad® Pro 2 (9.7)

Item numbers: PC-iPAD5LB and iPADPRO2EAS



iPADPRO2SCHS Smart Case Hard Shell

Case to fit iPad® Pro 2 (9.7)

- Made from high-end synthetic leather
- Sleeper magnet function to optimize battery life
- Secure closure
- Easel style for convenient viewing
- Snap in frame holds and protects your iPad®

Stock Color: Black

NOTE: Also available for iPad® Air 1 and iPad® Air 2

Item numbers: PC-iPAD5SCHS and PC-iPAD6SCHS

PC-iPAD6HSTRP Handstrap Case

Case to fit iPad® Air 2



- Made from premium simulated leather
- Sleeper magnet function to optimize battery life
- Secure closure
- Easel style for convenient viewing
- Adjustable Viewing Angles
- Hand strap feature

Stock Color: Black

NOTE: Also available for iPad® Air 1

and iPad® Pro 2 (9.7)

Item numbers: PC-iPAD5HSTRP and iPADPRO2HTRHS



PC-iPAD6KEYS Keyboard Case

Case to fit iPad® Air 1 & 2 and iPad® Pro 2 (9.7)

- Made from premium simulated leather
- Bluetooth keyboard with ABS keys
- Secure closure
- Easel style for convenient viewing

Stock Color: Black

NOTE: Keyboard cases are also available for iPad® Mini

For the latest new products, pricing, and ideas refer to:
ColemaxGroup.com

iPADPROSC Hard Shell Case

Case to fit iPad® Pro

- Made from highest quality synthetic leather
- Sleeper magnet function to optimize battery life
- Secure closure
- Easel style for convenient viewing
- Snap in frame holds and protects your iPad

Stock Color: Black



iPADPRODOC Folio Case with Document Pouch

Case to fit iPad® Pro

- Made from highest quality synthetic material
- Sleeper magnet function to optimize battery life
- Easel style for convenient viewing
- Multiple viewing angles

Stock Color: Black

NOTE: Also available for iPad® Pro 2 (9.7)

Item number: iPADPRO2DOC



iPADPROROT Rotary Case

Case to fit iPad® Pro

- Made from premium simulated leather
- Sleeper magnet function to optimize battery life
- Secure closure
- Easel and rotary styles for convenient viewing
- Snap in frame holds and protects your iPad®

Stock Color: Black

NOTE: Also available for iPad® Air 1 & 2 and iPad® Pro 2 (9.7)

Item numbers: PC-iPAD5ROT, PC-iPAD6ROT, and iPADPRO2ROT





PC-iPADMIN2SHCS Hard Shell Case

Case to fit all generation iPad® Mini

- Made from highest quality material
- Sleeper magnet function to optimize battery life
- Secure closure
- Easel style for convenient viewing
- Snap in frame holds and protects your iPad

Color: Black

NOTE: Also available for the iPad® Mini 4

Item number: **MIN4TB**



PC-iPADMIN2EAS Easel Style Case

Case to fit iPad® Mini 2

- Made from premium simulated leather
- Sleeper magnet function to optimize battery life
- Secure closure
- Easel style for convenient viewing

Stock Color: Black

NOTE: Also available for the iPad® Mini 4

Item number: **MIN4EAS**



MIN4RUG Rugged Case

Case to fit iPad® Mini 4

- Rugged durable exterior
- Easel style for convenient viewing

Stock Color: Black

NOTE: Also available for iPad® Mini 2

Item number: **iPADMIN2RUG**



MIN4HSRUG Handstrap Rugged Case

Case to fit iPad® Mini 4

- Rugged durable exterior
- Easel stand for angle positioning
- Handstrap
- Rotation ability for convenient use
- Built in screen protector

Stock Colors: Black

NOTE: Available for iPad® Mini 2

Item number: **PC-iPADMINHSRU**

K7EAS15 Easel Case

Case to fit Kindle® 7 2015

- Made from premium simulated leather
- Sleeper magnet function to optimize battery life
- Secure closure
- Easel style for convenient viewing

Stock Color: Black

NOTE: Also available for Kindle® HD 8 2016

Item number: K8EAS16

**PC-KINDTYBK Kindle® Paperwhite Case**

Case to fit Kindle® Paperwhite

- Made from premium simulated leather
- Sleeper magnet function to optimize battery life
- Secure closure
- Literature pocket & business/ID card holders

Stock Color: Black

**PC-KIND4YBK Kindle® 4 Case**

Case to fit Kindle® 4

- Made from premium simulated leather
- Secure closure
- Book style with hidden magnet closure

Stock Color: Black

For the latest new products, pricing, and ideas refer to:
ColemaxGroup.com

SAM101AEAS Samsung® Galaxy 10.1 A Series Easel Case

Case to fit Samsung® Galaxy 10.1 A Series

- Made from premium simulated leather
- Sleeper magnet function to optimize battery life
- Secure closure
- Easel style for convenient viewing
- Snap in frame holds and protects your Samsung® device
- Leather frame to hold the device securely

Stock Color: Black

NOTE: Also available for Samsung® 7 and Samsung® 8 A Series

Item numbers: **SAM7AEAS** and **SAMA8EAS**



SAM8EHSTRP Samsung® Galaxy 8 E Series Handstrap Case

Case to fit Samsung® Galaxy 8 E Series

- Made from premium simulated leather
- Sleeper magnet function to optimize battery life
- Secure closure
- Easel style for convenient viewing
- Hand strap

Stock Color: Black

NOTE: Also available for Samsung® 9.6 E Series

Item number: **PC-SAM96EHSTRP**



MICSP4EAS Easel Case

Case to fit Microsoft® Surface Pro 4

- Made from simulated leather
- Sleeper magnet function to optimize battery life
- Secure closure
- Easel style for convenient viewing
- Hand strap

Stock Color: Black



PC-KR78UKEY Keyboard Case for 7" & 8" Devices

Keypad case for any 7" or 8" device



- Made from premium simulated leather with secure magnetic snap closure
- Secure adjustable frame
- Removable Bluetooth 3.0 keyboard
- Uninterrupted working time of 90 hours
- Standby time is 60 days
- Working distance is 10 yards

NOTE: Also available for 9" & 10" Devices

Item number: PC-KR910UKEY



NEO13LAP Universal 13" Neoprene Laptop Sleeve

Case to fit all 13" laptops

- Made from high quality neoprene
- Device securely held in zippered compartment

Stock Color: Black

NOTE: Also available to fit 11" and 15" laptops

Item numbers: NEO11LAP and NEO15LAP



IPADUSL 10" Universal Neoprene Case for all iPad's and 10" Devices

Case to fit all 10" Devices

- Made from high quality neoprene
- Device securely held in zippered compartment
- Case accommodates easel positioning

Stock Color: Black



CBBN11 Nylon Chromebook® Case

Case to fit 11" Chromebook®

- Made from poly fabric with EVA foam protective lining
- Exterior zipper pocket
- Expandable clips to hold device in place to be used while in case
- Features handles and ID pocket

Stock Color: Black

NOTE: Also available for 13" Chromebook®

Item number: CBBN13



PC-iPH6RUG Rugged Case

Case to fit iPhone® 6/6S

- Durable rugged exterior
- Easy access to controls
- Polycarbonate & Silicone configuration for superior protection

NOTE: Also available for iPhone® 5, 5S, SE, 6 Plus, 7, and 7 Plus and Samsung® Galaxy Models



PC-iPH6PHS Hard Shell Case

Case to fit iPhone® 6 Plus

- Made from high density Polycarbonate
- Protective with a slim profile
- Easy access to controls
- Soft touch finish
- Gloss finish available

NOTE: Also available for iPhone® 5, 5S, SE, 6, 7, and 7 Plus and Samsung® Galaxy Models.



PC-iPH7HSCM Clear Hard Shell Case with TPU Bumpers

Case to fit iPhone® 7

- Made from clear polycarbonate with TPU bumpers
- Protective with a slim profile
- Easy access to controls. Scratch resistant

NOTE: Also available for iPhone® 5, 5S, SE, 6, 6 Plus, and 7 Plus and Samsung® Galaxy Model

PC-iPH6CO Combo Case

Case to fit iPhone® 6/6S

- Made from high density Polycarbonate
- Rugged silicone interior
- Protective with a slim profile
- Easy access to controls
- Soft touch finish

NOTE: Also available for iPhone® 5, 5S, SE, 6 Plus, 7, and 7 Plus and Samsung® Galaxy Models



For the latest new products, pricing, and ideas refer to:
ColemaxGroup.com



iPH62CSB Hidden Credit Card Case

Case to fit iPhone® 6/6S

- Made from high density Polycarbonate
- Protective with a slim profile
- Easy access to controls
- Matte finish
- Hidden credit card compartment
- TPU lining for extra protection
- Holds 2 cards

NOTE: Also available for iPhone® 5, 5S, SE, 6 Plus, 7, and 7 Plus



PC-iPH7TPU TPU Case

Case to fit iPhone® 7

- Made from TPU
- Protective with a slim profile
- Easy access to controls
- Flexible for perfect fit

NOTE: Also available for iPhone® 5, 5S, SE, 6, 6 Plus, and 7 Plus



PC-iPH7PLBK Leather Book Case

Case to fit iPhone® 7 Plus

- Made from high quality synthetic leather
- Book style with secure closure
- Hard shell case inside to securely hold the device
- Credit card/ID slots on inside cover.

NOTE: Also available for iPhone® 5, 5S, SE, 6, 6 Plus, and 7

PC-iPH7LPOC Leather Case with Credit Card Slots

Case to fit iPhone® 7

- Made from high quality synthetic leather
- Case securely holds and protects device
- Back holds 2 credit cards

NOTE: Also available for iPhone® 5, 5S, SE, 6, 6 Plus, and 7 Plus





S7SSL0T Rugged Credit Card Case

Case to fit Samsung® Galaxy S7

- Made from TPU and high density polycarbonate
- Rugged protective case
- Easy access to controls
- Holds credit card/ID cards

NOTE: Also available for Samsung® Galaxy S6
Item number: S6SSL0T



PC-SG6RUG Rugged Case

Case to fit Samsung® Galaxy S6

- Durable rugged exterior
- Easy access to controls
- Polycarbonate & TPU for superior protection

NOTE: Also available for Samsung® Galaxy S5 and S7
Item numbers: PC-SG5RUG and S7RUG



PC-ATHUPLUS Athletic Armband

Case to fit up to the iPhone® 6 Plus & all smaller devices

- Made from Neoprene
- Protective with a slim profile
- Clear touch sensitive face
- Adjustable for most arms
- Easy access to controls
- Reflective Strap



PC-ATHSP1 Sweat Proof Athletic Armband

Case to fit up to iPhone® 7 Plus

- Made from lycra and polyurethane
- Sweat proof design
- Universal to fit most devices
- Easy access to controls

For the latest new products, pricing, and ideas refer to:
ColemaxGroup.com



PC-iPADBAM Small Bamboo Stand

Stand to hold all Tablets

- Made from environmentally friendly bamboo
- Two easel positions for convenient viewing
- Easy two piece assembly
- 7 ¼" H X 3 ½" L

PC-FNBAMST Large Bamboo Stand

Stand to hold all devices and books

- Made from environmentally friendly bamboo
- Two easel positions for convenient viewing
- Folds for convenient travel and storage
- 10" H X 8" L



PC-EASELST Metallic Device Stand

Stand for all devices

- Easel position for convenient viewing
- Universal for all devices
- Lightweight



RINGST Ring Stand

Stand for all smartphones

- Easel position for convenient viewing
- Universal for all devices



PC-STYLCG Stylus

Capacitive Stylus for all touch screen devices

- Includes a pen
- Ultra slim design

Stock Color: Black



PC-iPAD6TG Tempered Glass Screen Protector

Screen protector available for all devices

- Ultra clear
- Scratch proof
- All sizes available



PC-READERLIGHTA Reader Light

Clip on light to attach to all devices

- Bright LED light
- Can be used with any e-reader, book or tablet



PC-SPROTECTOR Screen Protector

Two pack of screen protectors available for all devices

- Non scratch PET protection
- Ultra clear
- Specify device when ordering
- All sizes available



PC-SHAM Screen Cleaner

Screen cleaner for all devices

- Ultra-soft cloth cleans any screen

Available in any color



CARDM Universal Car Mount

Mount for all devices

- Made from high density polycarbonate
- Adjusts to fit most devices
- Secure suction to the dashboard



PC-iPH6PWATER Waterproof Case

Case to fit iPhone® 6 Plus

- Made from polycarbonate
- Protects device from water
- Allows full access to talk and touch the screen

For the latest new products, pricing, and ideas refer to:
ColemaxGroup.com

Challenges & Solutions

Symbol / Motorola Case for SEARS

CHALLENGE: Sears was having issues with their Warehouse Teams inadvertently dropping and breaking their Symbol Bar Codes Scanners.

SOLUTION: Symbol came to The Colemax Group to design, develop, and produce a rugged case solution to protect the devices. Colemax made a Form Fit Molded EVA case that protected the device from drops. Case was made in SEARS blue color with SEARS logo.....Included a breakaway neck strap to protect the user against further injury.

Cintas / DELL

CHALLENGE: Dell developed a handheld device incorporating bar code scanner for Cintas Route Drivers. Needed a case solution for protection.

SOLUTION: The Colemax Group determined the type and function of case needed. Created a leather like form fit case solution, with Cintas logo, to protect the device and scanner.

Reebok

CHALLENGE: Reebok had a new sneaker to launch and need a vehicle to help promote the new brand.

SOLUTION: Have The Colemax Group create a Phone case with the sneaker colors and name of the design (Reebok Pump), resulting in the successful launch of a new sneaker and a fun way to protect your phone.

Motorola

CHALLENGE: Motorola was developing a new Smartphone and needed a dedicated fit, belt clip pouch to hold the device.

SOLUTION: After 9 months of development, incorporating revisions to correspond with design changes of the device, The Colemax Group created a fine leather case solution, with Motorola Logo Plate, below budget, for the life of the device. The program continues with Colemax having provided over 250,000 units to date.

Panasonic (Canada)

CHALLENGE: Panasonic was having issues in the warehouse with workers dropping phones from high levels.

SOLUTION: Colemax created a mold for a high density, form fit Silicone case to fully protect the phone from a 10 ft. drop to a hard surface. Result: Zero Breakage.

This is how we do it

CHALLENGE: My client is looking for a case to protect their tablet /mobile device..

QUESTIONS FOR YOU TO ASK:

Do they need the case to be universal or device specific?

Do they need superior protection?

What is the environment the devices are used in: retail, industrial, schools?

Does it need to be waterproof?

Does it need a handle or strap?

What color do they want?

How would they like it decorated: one color to four color process, deboss, laser engraved?

CHALLENGE: My client has all different smartphones / tablets deployed.

SOLUTION: Good news....with Colemax Cases you can mix and match to achieve volume discount levels. See additional questions above!

CHALLENGE: What if we need a very small quantity.

SOLUTION: Give us a call. While we try to require a reasonable MOQ, there are some deals that just can't hit that figure. Let's work it out together.

CHALLENGE: I don't see the case I want.

SOLUTION: No problem. We can make the case you want!



The ColeMax Group

maintains the widest selection of products for mobile electronic devices with the fastest turnaround in the Promotional Industry.

“ we have you covered ”



General Information

Standard Production Time:

200 pieces and less: 5-8 business days after art approval.
More than 200 pieces: 12-18 business days after art approval.

Rush Service:

Available depending on product stock and production capacity. Contact us for information.

Payment Terms:

Net 30 days for credit established distributors only. Call to discuss.

Paper proof:

No Charge.

Print Production:

Available options: deboss, emboss, laser engraving, water transfer, digital, 1 color print, 2 color print and 4 color process screen printing.

Pre Production Proof:

Call for pricing.

Standard Colors:

Red- PMS 200 Blue- Reflex Blue Green- PMS 3435 Yellow- PMS 3945 Black White Gold Silver
COLORS AVAILABLE WILL BE CONFIRMED.

Color Matches:

Color and PMS color matches will be charged at a rate of \$25.00 per color on orders under 200 pieces.

Decorating Options:

Deboss, Emboss, Foil Print, Laser Engrave, Embroidery, Water Transfer, Digital Printing, Pad Print and Full Color Screen Print.

Trademark Notice:

All logos shown in this catalog are for illustrative purposes ONLY. No attempt has been made to infringe on copyrights and trademarks. The logos DO NOT imply endorsement by the owners of the artwork/design/trademark, that such items were ever produced, or that the owners expressly authorized any items with these specific logos for sale to anyone.

All purchase orders are final and CANNOT be cancelled.





For the latest new products, pricing, and ideas refer to:
ColemaxGroup.com

