

# COBBLESTONE MILLS

A DIVISION OF  
TOWEL SPECIALTIES

2020-2021

exceptional  
blanket &  
robe gifts

ASI SUPPLIER OF  
THE YEAR

**#1** out of over 3,000  
suppliers across all  
product categories



COBBLESTONEMILLS.COM  
ASI 91605 PPAI 113150





## HERE'S WHY CUSTOMERS LOVE COBBLESTONE MILLS BLANKETS

**THE "LUXURY SIZE" REVOLUTION:** From the beginning, one of our missions has been to furnish the largest blankets in the promotional products industry. Look for the "Luxury Size" icon (right) for blankets that are larger than standard size.

*luxury size*

**ONE SIZE FITS ALL • BLANKETS LAST FOREVER • HOME AND OUTDOOR USES**



## EXCEPTIONAL BLANKETS & ROBES...

...THAT EXPRESS YOUR APPRECIATION TO EACH AND EVERY RECIPIENT.  
 OUR PRODUCTS ARE BUILT FOR HOME COMFORT AND ENDURANCE AT A  
 TIME WHEN WORKING FROM HOME HAS BECOME THE NORM.  
 WHETHER YOU WANT TO REMIND EMPLOYEES THAT THEY ARE PART OF  
 YOUR TEAM OR SEND HOLIDAY GIFTS, THINK COBBLESTONE MILLS.

As part of the Towel Specialties family, the Cobblestone Mills Blanket Company promises the same outstanding level of service that has allowed us to receive these awards:

### — AWARDS —

ASI Counselor Magazine Distributor Choice Award Winner, as voted on by Promotional Products Distributors: “Best Blanket Supplier”, 2019 and 'Best Towel and Robe Supplier”, 2007-2020

ASI Supplier of the Year out of 3,000 suppliers across all product categories in 2018

PromoMarketing Magazine Supplier Excellence Award  
 Gold Winner for 8 straight years, “Towels & Textiles”

10 First Place SGIA Golden Image Awards  
 for excellence in decorating non-wearable textiles

5-Star ESP Supplier and A-plus rated Sage Supplier

#### traditional blankets

greystoke blanket™	4
regency striped blanket™	6
oxford alpaca blanket™	8
newcastle sherpa blanket™	10
foxhill throw™	12
brighton striped blanket™	14
river hill quartet blanket™	16
fairfield throw blankets™	18
mansfield sherpa blanket™	20
cambridge classic throw blanket™	22
somerset throw blanket™	24
clifton classic blanket™	26
kingston blankets™	28
highlander four seasons blanket™	30
stonehouse sweatshirt blankets™	32

#### specialty blankets

<b>NEW</b> tuscan backpack picnic blanket	34
king's cross travel pillow blanket™	36
4-in-1™ blanket • poncho • cushion • backpack	38
game day hooded blanket™	40

#### corporate gifts

robes	42
robe gift sets	44
slippers	46

#### additional information

terms & conditions	47
product information & decorating techniques	48
presentation options	50
beach towel gifts	52



greystoke blanket™







**GREYSTOKE BLANKET™**

At 50" x 70", the Greystoke Blanket is as big and cozy as it looks and tells a tale of touch, texture and luxuriousness. The silky soft silver outer shell has a rich sheen that enhances your logo; the dark grey reverse side, with its thick shaggy fabric, provides sustained warmth. If your organization wants to impress clients, customers, or other associates, the Greystoke Blanket is for you. Features hidden zippered compartment that conceals backing on embroidered designs. Packaged in vinyl carry case.

**GSBKT**

	1	36	72	144	288	600
Blank	39.50	34.25	33.25	31.95	30.75	29.95
Laser Patch or Embroidered	44.25	43.25	41.95	40.75	39.95	
Additional charges and information appear on page 48.						6R

luxury size



regency striped blanket™



Sotheby's





## ■ REGENCY STRIPED BLANKET™

It's all about the stripes! With a cozy combination of two-ply micro plush and soft ribbed brushed velvet, plus its enormous 60" x 70" size, the Regency Striped Blanket provides the perfect royal touch. Ideal for holding court on rainy days with a favorite book on the sofa. It even has the bonus of a hidden pocket to hide embroidery backing. The perfect way to associate your name with enduring comfort. This super heavyweight blanket is granite grey on the front and light silver with black pinstripes on the back. Packaged in vinyl carry case.

### RFBKT

	1	36	72	144	288	600
Blank	42.75	37.50	36.75	33.95	32.25	30.50
Laser Patch or Embroidered	46.50	45.50	44.75	42.75	40.75	

Additional charges and information appear on page 48. 6R

*luxury size*



Add your logo or custom message to the Message Wrap (page 50) to enhance your gift presentation.



Select from embroidery (opposite page) or a lasered suede patch (above) for your logo.



oxford alpaca blanket™

---







## OXFORD ALPACA BLANKET™

Cancel all plans. Once you've wrapped yourself in our oversized 60" x 70" Oxford Alpaca Blanket, you may very well be done for the day. The soft, luxurious velour front is perfect for your logo, while the back, with its extra thick pile, feels as soft as alpaca. Features hidden zippered compartment on reverse side designed to conceal backing on embroidered designs. Available in sage, navy, grey or brown. Packaged in vinyl carry case.

### OXABKT

	1	36	72	144	288	600
Blank	38.75	36.95	36.25	35.50	34.25	33.50
Laser Patch or Embroidered	43.95	43.25	42.25	41.75	40.75	
Additional charges and information appear on page 48.						6R

luxury size



Available in sage, navy, grey or brown.



Shown above with a laser patch, consider presenting our blankets with the highly visible custom Message Wrap (page 50).





# Newcastle Sherpa Blanket™

---







Available with either navy, ivory, black or light silver outer shell.



Shown embroidered with Braided Tassel and gift card (pg. 51).



Shown above with laser patch.

## NEWCASTLE SHERPA BLANKET™

One of our best-sellers, this deluxe, two-ply blanket is made from rich fabrics that feel exceptionally soft against your skin. The heavyweight Sherpa material keeps your body warm while the sleek outer shell is perfect for extra large Tone on Tone logos. At 50" x 70", you can either share it or keep it all for yourself. Available with either navy, ivory, black or light silver outer shell and plush sherpa on the back. Packaged in vinyl carry case.

### NCSB

	1	36	72	144	288	600
Blank	42.50	39.25	36.95	34.75	32.95	31.50
Corner Tone on Tone		41.25	39.95	38.25	37.50	36.75
Full Size Tone on Tone		44.25	41.75	40.25	39.50	38.75
Laser Patch or Embroidered		43.25	41.25	39.75	38.75	37.75

Additional charges and information appear on page 48.

6R

luxury size





foxhill throw™

---







Select from embroidery (opposite page) or a lasered suede patch (above) for your logo.

### ■ FOXHILL THROW™

Ever want to get back to nature? Our Foxhill Throw evokes the feel of the great outdoors, while luxurious fleece stays true to our highest expectations of comfort. Meanwhile, the sand and grey earth tone motif provides the right nurturing touch for your brand. You simply won't find anything like this blanket anywhere else. Packaged in vinyl carry case. 50" x 60".

#### FHTB

	1	36	72	144	288	600
Blank	23.25	20.95	19.95	19.25	18.95	18.25
Laser Patch or Embroidered	29.50	27.95	27.25	26.50	25.50	
Additional charges and information appear on page 48.						6R



Add your logo or custom message to the Message Wrap (page 50) to enhance your gift presentation.



brighton striped blanket™

---







At an oversized 60" x 70", the Brighton Striped Blanket is available in navy, grey or black.

### ■ BRIGHTON STRIPED BLANKET™

In virtually every aspect, the warm coral fleece Brighton Striped Blanket outshines all others. At 60" x 70", this blanket is large enough for two and brings unmatched value to any promotion. Extremely soft and extra large, this one-of-a-kind blanket gives your brand the shimmer and shine it needs to stand out. Available in navy, grey, or black. Packaged in vinyl carry case.

#### BMSB

	1	36	72	144	288	600
Blank	23.25	20.95	19.95	19.25	18.95	18.25
Laser Patch or Embroidered	29.50	27.95	27.25	26.50	25.50	25.50

Additional charges and information appear on page 48. 6R

luxury size



The fashionable Braided Tassel with your custom gift card makes a stylish presentation (page 51).



river hill quartet blanket™







■ RIVER HILL QUARTET BLANKET™

The River Hill Quartet Blanket begs you to touch it. Or is it the other way around? When the hand meets this amazing throw, it's the beginning of a close, beautiful and warm friendship. The longer fibers of brushed velvet reward you with a fuller, more luxurious, almost sinful feel. The popular ombré pattern is available in dove grey or midnight blue. Packaged in vinyl carry case. 50" x 60".

**RHQB**

	1	36	72	144	288	600
Blank	23.25	20.95	19.95	19.25	18.95	18.25
Laser Patch or Embroidered	29.50	27.95	27.25	26.50	25.50	
Additional charges and information appear on page 48.						6R



Present your gift inside this sheer Organza Bag with its satin drawstring. (pg. 51).





fairfield throw blankets™

---







## FAIRFIELD THROW BLANKETS™

Comfort woven into every square inch. With its two-ply construction, these blankets feel remarkably like lambswool on one side and mink on the other. Features include:

- Hidden zippered compartment on reverse side designed to conceal backing on embroidered designs.
- Packaged in vinyl carry case for extra safekeeping.
- Two sizes to choose from:
  - 50" x 60" Standard Size Blanket available in black, navy, camel or silver grey.



- 60" x 70" Deluxe Size Blanket available in navy or silver grey.

*luxury size*



### Standard Size Fairfield Throw Blanket (FRFSTD)

	1	36	72	144	288	600
Blank	26.95	23.95	23.50	22.50	21.50	20.50
Laser Patch or Embroidered	29.95	29.25	27.95	26.75	25.50	
Additional charges and information appear on page 48.						6R

### Deluxe Size Fairfield Throw Blanket (FRFDLX)

	1	36	72	144	288	600
Blank	41.95	38.95	38.50	36.50	35.95	35.50
Laser Patch or Embroidered	47.95	44.25	41.95	41.25	40.50	
Additional charges and information appear on page 48.						6R



Enhance your presentation with a satin ribbon and customized gift card (page 50).



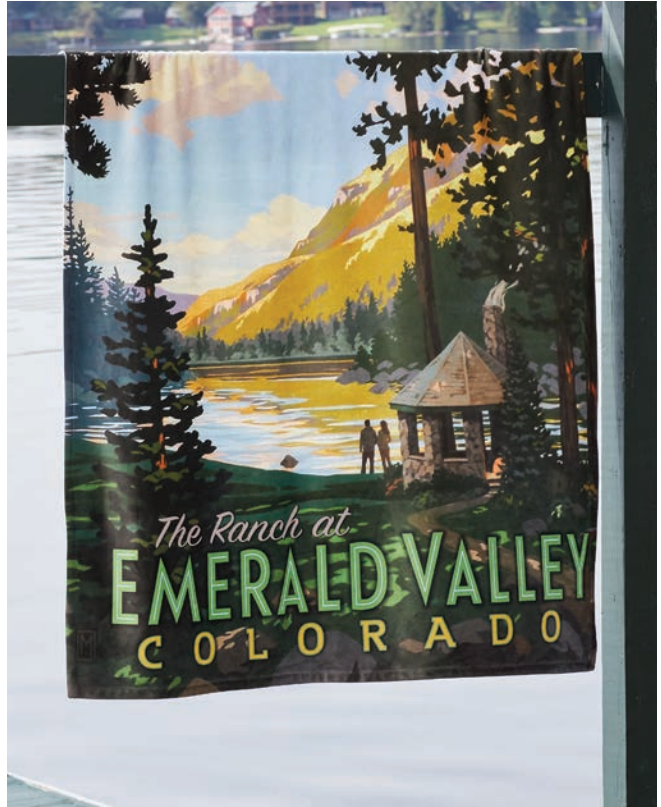
mansfield sherpa blanket™







Thick Sherpa back provides extra warmth.



Shown with edge-to-edge, photorealistic imagery.

## ■ MANSFIELD SHERPA BLANKET™

A new innovation in texture, the Mansfield makes it possible to have a heavier weight, feathery softness, and the best fabric for highly detailed, multi-colored logos on a blanket. With our ColorFusion™ decorating process, leave it to us for the most faithful edge-to-edge reproduction of your logo. With its soft, sleek front and the sumptuous comfort of a thick Sherpa backing, this two-ply blanket lets you have it all. Packaged in vinyl carry case. 50" x 60".

### MMPS

	18	36	72	144	288	600
ColorFusion™	50.50	42.95	41.95	41.50	40.50	39.95

- ColorFusion price includes a vibrant imprint in unlimited colors. 6R
- \$75.00(v) set-up charge.
- Additional charges and information appear on page 48.



The fashionable Braided Tassel, with your custom gift card, makes for a stylish presentation (page 51).



cambridge  
classic throw™







■ CAMBRIDGE CLASSIC THROW™

Here's one of the most highly impactful gifts you'll ever give. This two-ply blanket includes an edge-to-edge, full-color imprint on the fleece side and remarkably soft Sherpa on the other. While the blanket might lull you to sleep, the dynamic ColorFusion™ decoration, with unlimited colors, is sure to warm hearts everywhere. Great for the home, mountain resorts, or outdoor sporting events. Whip stitch edge. Packaged in vinyl carry case. 55" x 60".

**CAMBKT**

	18	36	72	144	288	600
ColorFusion™	44.75	39.25	38.25	36.95	36.50	35.75

ColorFusion price includes a vibrant imprint in unlimited colors. 6R

- \$75.00(v) set-up charge.
- Additional charges and information appear on page 48.

luxury size





somerset throw blanket™







■ **SOMERSET THROW BLANKET™**

Cozy up with this fantastically soft and plush Somerset Throw Blanket. Our ColorFusion™ decorating process provides an edge-to-edge print in unlimited colors. Fire up your creative juices – there are no decorating limitations with the fleece Somerset Throw Blanket. 50" x 60". Packaged in vinyl carry case.

**SOMSET**

	18	36	72	144	288	600
ColorFusion™	38.50	33.25	32.25	30.95	29.75	28.95

- ColorFusion price includes a vibrant imprint in unlimited colors. 6R
- \$75.00(v) set-up charge.
- Additional charges and information appear on page 48.

Soft luxurious fleece, a finished whip stitch edge, and full color ColorFusion designs make the Somerset Throw Blanket a standout.





clifton classic blankets™

---







Light grey with laser patch.



Navy with corner Tone on Tone logo.

### ■ CLIFTON CLASSIC BLANKETS™

Regardless of the season, there's always a place for the Clifton Classic Blanket. Remarkably soft and cozy, this lighter weight version of our Kingston Blanket is priced to suit smaller budgets.

Great for picnics, beach bonfires, concerts, boats, sporting events and tailgating...or everyday use around the home or office.

Black, red, navy, light grey or granite grey. Packaged in vinyl carry case. 50" x 60".

#### CCBKT

	1	36	72	144	288	600
Blank	19.50	16.50	14.50	13.50	12.25	11.50
Corner Tone on Tone		20.95	18.95	17.95	16.75	15.95
Full Size Tone on Tone		22.50	20.50	19.50	18.25	17.50
Laser Patch or Embroidered		22.25	20.25	19.25	17.95	17.25

Additional charges and information appear on page 48.

6R



Shown above with embroidery and optional Message Wrap (page 50).



Available in granite grey, light grey, navy, black, and red.



kingston blankets™







Tone on Tone logo in corner on black, red, navy or silver grey.

## ■ KINGSTON BLANKETS™

Our Kingston Blanket is ideal for travel, the home, or outside fun. Soft and cozy, but also extraordinarily durable. In short, the blanket you'll take everywhere, because it's made to go the distance. Perfect for the holidays, company anniversaries, referrals, employee or volunteer recognition, and client appreciation. Packaged in vinyl carry case. Available in two sizes:

- 50" x 60" Standard Size Kingston Blanket in granite grey, black, red, navy, silver grey or royal blue.
- 60" x 70" Deluxe Size Kingston Blanket in navy or silver grey.

### Standard Size Kingston Blanket (KINBKT)

	1	36	72	144	288	600
Blank	17.75	16.50	15.50	14.50	13.75	13.25
Corner Tone on Tone	21.50	20.50	19.50	18.75	18.25	
Full Size Tone on Tone	25.50	24.25	23.50	22.50	21.95	
Laser Patch or Embroidered	23.25	21.95	21.25	20.50	19.95	
Additional charges and information appear on page 48.						6R



### Deluxe Size Kingston Blanket (KINBXL)

	1	36	72	144	288	600
Blank	22.75	21.50	20.50	19.50	18.75	18.25
Corner Tone on Tone	26.50	25.50	24.50	23.75	23.25	
Full Size Tone on Tone	30.50	29.25	28.25	27.50	26.95	
Laser Patch or Embroidered	28.25	26.95	26.25	25.50	24.95	
Additional charges and information appear on page 48.						6R





# Highlander Four Seasons Blanket™

---







## ■ HIGHLANDER FOUR SEASONS BLANKET™

Name a place or a season and there's a use for the Highlander Four Seasons Blanket. At 50" x 70", this generously sized fleece blanket is perfect in cold weather as a lap blanket or in warmer climates as a sofa throw or picnic blanket.

Full size or corner Tone on Tone logos look fantastic on the Highlander. Also available with embroidery or laser patch. Available in charcoal, navy and red, each with a grey border to frame your logo. Rolled and tied with matching grey rope.

### HFSB

	1	36	72	144	288	600
Blank	26.75	24.95	23.25	21.95	20.75	19.95
Corner Tone on Tone	28.50	27.50	26.25	25.50	24.95	24.95
Full Size Tone on Tone	30.95	29.75	28.95	27.75	26.95	26.95
Laser Patch or Embroidered	29.75	27.95	27.25	26.25	25.50	25.50
Additional charges and information appear on page 48.						6R

luxury size



## PERFECT FOR

- Picnics
- Beach bonfires
- Indoor or outdoor firepits
- Boats and boating events
- Tailgating and sporting events

## USES

- Housewarming or Holiday gift
- Educational Institutions
- Employee/Staff/Volunteer gift
- Corporate Travel
- Fund Raisers



Available in charcoal (left, with corner Tone on Tone logo), navy (center, embroidered) or red (right, with laser patch).



stonehouse  
sweatshirt  
blankets™







## STONEHOUSE SWEATSHIRT BLANKETS™

With their enormous size and extra large imprint, these blankets feel like a much larger version of your favorite sweatshirt!

Rugged and durable, these blankets are travel-friendly and have year-round appeal. They're certain to find many uses both around the home and the outdoors. Great for company picnics, high school graduations, fund raisers, or as holiday gifts to be remembered for years.

The decorated blankets come rolled and tied with knotted rope. Blanks are shipped flat. All blankets shipped inserted in a matching grey backpack. Available in athletic grey in two sizes:

- 50" x 60" Standard Size Stonehouse Sweatshirt Blanket
- 60" x 84" Deluxe Size Stonehouse Sweatshirt Blanket

### Standard Size Stonehouse Sweatshirt Blanket (SHSSTD)

	1	36	72	144	288	600
Blank	21.95	20.50	19.50	18.50	17.75	17.25
Screenprinted (1 color)	25.75	24.75	23.75	22.95	22.50	22.50
Laser Patch or Embroidered	25.75	24.25	22.75	21.50	20.95	
Add to print Backpack	2.10	1.90	1.80	1.60	1.50	

Additional charges and information appear on page 48. 6R

### Deluxe Size Stonehouse Sweatshirt Blanket (SHSDLX)

	1	36	72	144	288	600
Blank	28.75	27.50	26.50	25.50	24.75	24.25
Screenprinted (1 color)	35.95	34.95	33.95	33.25	32.75	
Laser Patch or Embroidered	32.75	31.25	29.75	28.50	27.75	
Add to print Backpack	2.10	1.90	1.80	1.60	1.50	

Additional charges and information appear on page 48. 6R

*luxury size*

Stonehouse Sweatshirt Blankets are available with three decorating options: a full-size screenprinted logo (pg. 32), an embroidered logo (below) or an affixed laser patch (pg. 49).



Add your one-color logo (up to 14" x 9") to the matching backpack.



# tuscany backpack picnic blanket™







## ■ TUSCANY BACKPACK PICNIC BLANKET™

**NEW!** If preparing for picnics or outdoor events is always a challenge for you, we have a simple solution.

- Picnic blanket easily folds into attached 22" h x 16" w grey backpack that carries everything you need for your outing.
- Adjustable shoulder straps on the backpack allow for easy, hands-free carrying.
- Cozy 60" x 60" blanket front has grey/white plaid fleece and water-resistant, ripstop nylon on the reverse side.



Embroidery available on blanket and/or backpack.

### TBPB

	1	36	72	144	288	600
Blank	39.50	34.25	33.25	31.95	30.75	29.95
Embroidered/Laser Patch - Single location (backpack OR blanket)	40.25	39.25	37.95	36.75	35.95	
Embroidered/Laser Patch - Two locations (backpack AND blanket)	46.25	45.35	43.95	42.75	41.95	

Additional information appears on page 48.

6R

Screenprinted backpack: add \$1.95(r) to the blank or single location price above. ColorFusion on backpack: add \$2.95(r) to the blank or single location price above.



Laser Patch

Screenprint

ColorFusion™





king's cross  
travel pillow  
blanket™



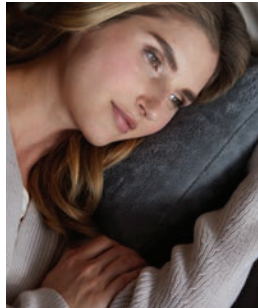




wherever you go, comfort is sure to follow.

■ KING'S CROSS TRAVEL PILLOW BLANKET™

The King's Cross Travel Blanket is your ideal seat mate, with extraordinarily soft fleece that folds into a compact pillow for those lengthy flights. Plus, the extended Trolley Sleeve not only serves as the location for your logo, it also includes a pocket to hold your boarding pass or other materials. The personal 45" x 50" size makes this blanket optimal for travel or around the home. Available in navy and slate.



Unfolds from comfortable pillow to full sized blanket.



**KCTB**

	1	36	72	144	288	600
Blank	23.25	20.95	19.95	19.25	18.95	18.25
Laser Patch or Embroidered	29.25	27.75	26.95	26.50	26.50	25.50
Additional charges and information appear on page 48.						6R



- Sleeve on back slides directly over luggage handles for extra convenience during travel.
- Pocket within sleeve holds boarding pass and other small materials.



4-in-1™ blanket • poncho •  
cushion • backpack



1 Backpack



— RECIPIENT —

Two major awards voted on by a panel of industry experts:

- PPAI Golden Achievement Award for Most Creative New Entry Designed for Promotional Product Use
- Marketingedge Magazine Award for Top Overall Product



■ 4-IN-1 BLANKET • PONCHO •  
CUSHION • BACKPACK

The name says it all, and this blanket does it all. Features anti-pilling fleece on the blanket side and water-resistant, rip-stop nylon on the reverse side. The adjustable hood with brass snaps, an outside compartment on the tote for holding loose items, and adjustable shoulder straps make this Cobblestone Mills exclusive highly functional. Low 36-piece minimum for embroidery or screenprinting. ColorFusion™ is also available for unlimited colors on the poncho and/or backpack. 60" x 60".

Available colors:

- Royal blue poncho/navy fleece blanket
- Black poncho/black fleece blanket
- Emergency yellow poncho/black fleece blanket
- Grey poncho/black fleece blanket

Visit [towelspecialties.com/video](http://towelspecialties.com/video) to watch the 4-in-1 Blanket video.

Q41	1	36	72	144	288	600
Blank	53.95	49.75	47.95	44.25	43.95	40.75
Embroidered (1 location)	61.25	56.50	52.50	50.50	50.50	46.95
Embroidered (2 locations)	67.75	63.25	58.25	55.25	55.25	50.95
ColorFusion™ (1 location)		56.50	52.50	50.50	50.50	46.95
ColorFusion™ (2 locations)		63.25	58.25	55.25	55.25	50.95

To screenprint poncho front and/or backpack, add \$1.95(r) 6R per location (1 color only) to blank price (36 pc. min.).  
Decoration locations appear on opposite page.  
Additional information appears on page 48.



luxury size





2 Poncho



3 Cushion

4 Blanket



DECORATION OPTIONS

Embroidery on blanket corner and/or backpack. - or - ColorFusion or Screenprint on poncho front and/or backpack.





game day  
hooded blanket™







**■ GAME DAY HOODED BLANKET™**

Not all sweatshirt fleece blankets are created equal. At a gigantic 60" x 84", our Game Day Hooded Blanket combines a hooded poncho, a backpack, and a blanket all in one.

Perfect for cool weather, the Game Day Hooded Blanket doubles as a great poncho, with an adjustable hood and inner hand warming pockets. With the hood tucked away, the oversized fleece personal blanket is cozy and comfortable. Charcoal grey.

Visit [towelspecialties.com/video](http://towelspecialties.com/video) to watch the Game Day Hooded Blanket video.

**GDHB**

	1	36	72	144	288	600
Blank	39.50	35.50	34.50	33.25	32.50	32.25
Screenprinted		39.95	39.25	37.25	36.75	35.75
Laser Patch or Embroidered		41.95	40.95	39.50	38.75	37.75
Add to print Backpack		2.15	1.95	1.85	1.65	1.55
Additional charges and information appear on page 48.						6R

*luxury size*



Add your one-color logo (up to 14" x 9") to the matching backpack.





robes

A



B







## A. WAFFLE WEAVE ROBE

Our textured Waffle Weave Robe (page 42, left) exudes a level of elegance that appeals to men and women alike. Exceptionally versatile, this robe is an ideal gift, and suitable for any climate. Textured waffle weave fabric in 100% cotton. Unisex. White only. OSFM or XL. 48" long.

### WW10

	1	36	72	144	288	600
Blank	32.25	30.95	30.50	28.75	27.50	26.25
Embroidered		37.75	36.75	35.25	33.75	32.25

Add \$5.00(r) for XL. 6R

Add \$10.00(v) to blank price for individual monogramming.

Price includes free blank drawstring Travel Gift Bag.

Additional information appears on page 49.



## C. HOODED CORAL FLEECE ROBE

You won't believe how soft and comfortable this robe feels. Plush and absorbent, once you try it on, you'll want to wear it all day. White only. OSFM, 48" long.

### RCF

	1	36	72	144	288	600
Blank	39.25	36.95	35.95	34.50	34.25	33.95
Embroidered		42.25	40.95	39.25	38.95	38.50

Add \$10.00(v) to blank price for individual monogramming. 6R

Price includes free blank drawstring Travel Gift Bag.

Additional information appears on page 49.

## B. KIMONO STYLE ROBE ts | turkish signature™

Best seller. The double-sheared 100% cotton Turkish Terry velour Kimono Style Robe (page 40, right) makes you feel like you're wrapped in luxury. Unisex. White only. OSFM. 48" long.

### RW20

	1	36	72	144	288	600
Blank	54.50	48.95	47.75	45.50	43.75	41.75
Embroidered		56.50	54.95	52.50	50.75	48.25

Add \$10.00(v) to blank price for individual monogramming. 6R

Price includes free blank drawstring Travel Gift Bag.

Additional information appears on page 49.



## D. SHAWL COLLAR ROBE ts | turkish signature™

When you want to give the best, look no further. Here is one of the nicest robes you'll find. Made from 100% Turkish terry velour, features double pockets and a belt. Navy, white, natural or forest green. OSFM, 48" long.

### RW40

	1	36	72	144	288	600
Blank						
(white or natural)	79.50	73.75	70.95	67.75	66.75	66.25
Embroidered						
(white or natural)	81.25	77.95	72.95	72.25	71.50	

Add \$10.00(v) to blank price for individual monogramming. 6R

Add \$10.00(t) for black, forest green or navy.

Add \$10.00(v) for XL or XXL

Price includes free blank drawstring Travel Gift Bag.

Additional information appears on page 49.





robe gift sets







## gifts in a bag

Our drawstring Travel Bags are a stylish and affordable way to combine and present your gifts. At 17" x 23", the Travel Bag has many uses beyond the initial presentation and, with your logo, serves as a lasting reminder of your company and message.

Gifts In A Bag are shipped fully assembled, with each product placed inside the custom imprinted Travel Bag. Don't see what you're looking for? You can always build your own a la carte gift set by combining any products in our catalog.

### ■ A. WAFFLE WEAVE ROBE, SLIPPERS & CARD GIFT SET

Sophisticated and inviting, this gift set features our popular Waffle Weave Robe (WW10, pgs. 42-43) and matching slippers (SW01, pg. 46). Beautifully presented with ribbon and customized gift card, all conveniently packaged in a coordinating travel bag. No assembly required!

#### CBB1-WW10

	36	72	144	288	600
Decorated	58.75	54.95	51.50	47.75	44.95
Additional charges and information appear on page 49.					5R
One-time set up charge: \$230.00 (v). No charge for 144 or more sets.					

### ■ C. KIMONO STYLE ROBE & SLIPPERS GIFT SET

For the velvety soft touch of velour, this set includes an embroidered Turkish Kimono Style Robe (RW20, pgs. 42-43) and printed Quilted Velour Slippers (VS5, pg. 46). Beautifully presented with ribbon and customized gift card, all conveniently packaged in a coordinating travel bag. No assembly required!

#### CBB1-RW20

	36	72	144	288	600
Decorated	76.95	73.50	68.75	64.75	61.50
Additional charges and information appear on page 49.					5R
One-time set up charge: \$165.00 (v). No charge for 144 or more sets.					

### ■ B. DELUXE SHAWL COLLAR ROBE & SLIPPERS GIFT SET

This memorable room gift set includes a deluxe embroidered white or natural Turkish Shawl Collar Robe (RW40, pg. 42) and comfortable velour slippers (SV02, pg. 46). Beautifully presented with ribbon and customized gift card, all conveniently packaged in a coordinating travel bag. No assembly required!

#### CBB2

	36	72	144	288	600
Decorated	99.95	95.95	87.95	86.25	84.25
Additional charges and information appear on page 49.					5R
One-time set up charge: \$165.00 (v). No charge for 144 or more sets.					





# slippers



## ■ SLIPPERS IN A BAG™

The perfect complement to our fine robes, these slippers are available in four styles, with custom imprint. Each slipper set is shipped inside a 7" x 14" blank drawstring travel bag for both enhanced presentation and safekeeping.



**A. Open Toe Velour Slippers in Travel Bag (SV02)**

	1	36	72	144	288	600
Blank	8.95	8.25	6.95	5.95	5.60	5.05
Screenprinted		13.95	11.75	10.50	8.95	7.95
Additional charges and information appear on page 49.						6R



**B. Quilted Velour Slippers in Travel Bag (VS5)**

	1	36	72	144	288	600
Blank	10.75	9.75	8.50	7.75	6.95	6.50
Screenprinted		13.50	12.25	10.50	8.95	8.50
Additional charges and information appear on page 49.						6R



**C. Open Toe Waffle Weave Slippers in Travel Bag (SW01)**

	1	36	72	144	288	600
Blank	8.95	8.25	6.95	5.95	5.60	5.05
Screenprinted		13.95	11.75	10.50	8.95	7.95
Additional charges and information appear on page 49.						6R



**D. Terry Velour Adjustable Slippers in Travel Bag (SVLC05)**

	1	36	72	144	288	600
Blank	11.50	10.75	9.25	8.75	8.25	7.50
Screenprinted		15.50	13.50	12.50	11.25	10.50
Embroidered		18.95	17.25	15.95	14.95	13.95
Additional charges and information appear on page 49.						6R



# terms and conditions

## production times, changes & policies

### PRODUCTION TIMES AND ORDER CHANGES

**PRODUCTION TIME** (catalog quantities): Most decorated products ship within 7-10 business days after approval of pre-production or virtual sample.

Allow 10-15 business days for laser patch decorating or for ColorFusion on the Tuscany and 4-in-1 Blankets.

- Blank products ship within 24 hours.
- Pre-production samples may take up to 5 business days.
- Contact factory for quantities above 600 pieces and for rush charges.

**CHANGES & CANCELLATIONS:** To stay ahead of schedule, orders are often produced well in advance of your ship date. Therefore, no changes or cancellations regarding production may be made once a paper proof or pre-production sample (if required) is approved. Written changes must be submitted to factory and are not considered firm until you receive a written confirmation reflecting your change. Charges for changes may apply. Shipping changes must be made at least 72 hours in advance of your ship date.

### SHIPPING INFORMATION

- **FOB:** Baltimore, MD 21237.
- **ECONOMY WEST SHIP PROGRAM:**
  - Allows you to coordinate with our production schedule so your order ships on the appropriate Friday closest to your event date.
  - Orders shipping to California, Nevada, Arizona, Colorado, and New Mexico arrive on Tuesday, orders shipping to North Dakota, Washington, Oregon, Montana, Idaho, South Dakota, and Wyoming arrive on Wednesday. Call for information concerning Hawaii shipments.
  - To qualify for this program, your order must weigh at least 150 lbs. Orders weighing between 150-499 lbs. are billed at published UPS Ground rates. Orders weighing 500 lbs. or more are billed at published UPS Ground rates minus 20%.
  - "Economy West" must be referenced on your purchase order.
  - All shipments are arranged by a carrier selected by factory.
- **FREE DROP SHIPMENTS:**
  - No handling charges for single unit shipments for orders placed before 12/30/20 and shipped via UPS or FEDEX within the United States. Shipping charges are additional.
  - To qualify for this program, your purchase order must reference promo code 'COMFORT', otherwise, there will be a handling fee of \$6.25(v) per shipment.
  - Addresses must be submitted in our EXCEL dropship template. Template and additional fees for multiple drop ship lists, returns, address changes, international shipments, additional insertion charges, and multi-product shipments can be found at [towelspecialties.com/specials](http://towelspecialties.com/specials).
  - Allow an additional 3 to 5 days beyond standard production time. Maximum order quantity is 600 pieces. Contact factory for larger programs.
- **DELAYS:** Factory shall not be held responsible for late deliveries by carrier or due to acts of God, terrorism, war, or strikes.
- **SHIPPING METHOD:** For customer arranged carrier, customer is responsible for arranging pick-up between 900 am and 5:00 pm EST. Customer is solely responsible for confirming pickup by carrier.
- **TRACKING:** Purchase orders with an email address receive an automated update with tracking numbers for orders shipped by UPS or FEDEX.
- **PACKAGING:** Standard bulk packaging, unless otherwise requested. Special handling with non-standard carton quantities is available but requires additional cost and time.
- **PALETTIZING AND SHRINK WRAPPING:** \$12.50(v) per pallet.
- **AIR SHIPMENTS:** Dimensional weight applies to most products.
- **SHIPMENTS OUTSIDE CONTINENTAL U.S.:** Must go through a factory approved customer-designated freight forwarder.

### GENERAL INFORMATION

**SAMPLE POLICY:** Blank samples are sold at the single piece price. Randomly decorated samples are end quantity price. You will receive full credit (less freight) for samples returned in good condition within 30 days.

**EMAILED/FAXED ORDERS:** Customer is responsible to confirm receipt by factory of all submitted orders. Factory will not be held responsible for unconfirmed faxed or emailed orders.

**VIRTUAL PROOFS:** Submit artwork and detailed specifications to [virtu@towelspecialties.com](mailto:virtu@towelspecialties.com). Allow 48 hours.

**POLYBAGGING:** \$0.25(t) per unit.

**GIFT SETS AND FULFILLMENT:** Gift sets that do not appear in catalog may be assembled for you. Please confirm that selected products fit in your desired packaging. Additional production time may be required.

Factory will insert 3rd party supplier products into all gift sets for an additional handling fee. We will not be held responsible for the condition or inspection of customer supplied products and will require a waiver signature upon arrangements.

**RETURNS & CLAIMS:** A 15% restocking charge applies on all pre-approved returns. Merchandise returned to factory without an RMA number (Returned Merchandise Authorization) will be refused and returned to sender. Requests for merchandise returns must be made in writing within 10 days of receipt of merchandise. Sewn products are custom made and non-returnable.

**THIRD PARTY DECORATORS:** Altered blank products may not be returned. Customer/decorator is responsible for ascertaining suitability (including, but not limited to, color, quality and style) of blank products prior to decorating. Factory is not responsible for shortage claims for merchandise shipped to a decorator and must be notified of goods regarding any product issues within 48 hours of receipt. Box weight audits are used to determine actual package quantities at time of shipment. Claims for delays or damage in transit must be made with carrier. Product warranties do not apply to products decorated by anyone other than the factory.

**PRODUCT WARRANTIES:** All products are guaranteed against defects in material and workmanship for a period of 90 days from the invoice date.

**COMMERCIAL & INSTITUTIONAL USE:** All products are intended for individual promotional use. Warranty explicitly excludes commercially laundered products and those used for institutional purposes.

**COPYRIGHT & TRADEMARK LAWS:** All logos are pictured to show our decoration reproduction ability only, and do not represent advertisements, endorsements, sponsorships, or products for sale to anyone other than the parties expressly authorized by the owner of such logos and designs. We reserve the right to use customer-supplied logos in our advertising materials unless otherwise requested in writing.

**PRICES & SPECIFICATIONS:** Prices and specifications are subject to change without notice. All prices are in US Dollars.

### DECORATION INFORMATION

#### ARTWORK CHARGES:

- Fees: \$45.00(v) per hour, with a half-hour minimum for separations, typesetting, touch-up, minor copy changes, etc.
- Email art files to [artts@towelspecialties.com](mailto:artts@towelspecialties.com). Submission must include your purchase order number in the subject line.

#### ACCEPTABLE FORMATS:

- Digitized embroidery: Tajima, Toyota, Barudan, Melco, Stellar, Brother, and ZSK. Designs that require digitization must be in Adobe Illustrator (Version 8.0 for Mac) or Photoshop (Mac or PC) and must include a color sequence sheet.
- ColorFusion (for 4-in-1 and Tuscany Blankets), Screenprinting and Laser Patch: Illustrator Version CS2 or lower: Create all fonts to outlines, then save as both an "ai" file and as an "eps" file. Files created in Corel Draw may be exported as an "ai" file. This process automatically converts the fonts to outlines. In Corel/PC language, "converts to curves" is the same as the Macintosh Language "Create Outlines." For Photoshop (Mac or PC), save file as a "tiff" or "jpeg" for transfer over e-mail (no larger than 1 megabyte). The minimum requested "dots per inch" (DPI) size is 300 dpi.
- ColorFusion (blankets): Submitted artwork should be at least 150 dpi, with 2" bleed, designed to size. Lower resolution may result in reduced clarity. PMS colors should be provided for reference, exact PMS color match not guaranteed. Critical design elements should be no closer than 2" from edge. All-over backgrounds with very dark colors should be avoided since color intensity may diminish. Design should be in proportion to dimensions of the product.

#### SCREENPRINTING INFORMATION:

- Standard Ink Colors: Yellow (109), Brown (139), Red (186), Purple (266), Royal (286), Navy (281), Blue (300), Turquoise (639), Green (347), Dark Brown (476), Red (485), Black, Reflex Blue, Silver, Ultra Gold, White.
- Ink Color Matching: No charge for PMS color match. Exact color match is not guaranteed. A pre-production sample is required when color matching is critical.
- Artwork/Lettering: Fonts should be no smaller than 3/8".
- When submitting digitized artwork, a color rendition (jpg, pdf) must be included for reference.



# product information

## INFORMATION IN THIS BOX APPLIES TO ALL PRODUCTS

### SET UP CHARGES & DECORATING INFORMATION

- Screenprinted blankets/towels include a one-color imprint. Screen charges:
  - \$120.00(v) for full size logo up to 26" x 48".
  - \$65.00(v) for corner logo up to 12" x 17".
- Note that PMS matching is not available on grey blankets. Light ink colors on grey will appear muted. Darker ink colors like black or navy are recommended.
- ColorFusion™ (Somerset, Cambridge and Mansfield Blankets): \$75.00(v) for orders and reorders. Set up charge and unit price always includes unlimited colors. PMS color matching cannot be guaranteed. An inherent property of this process may result in grinning or creasing.
- Embroidery Digitization Charges (up to 8,000 stitches): \$75.00(v). For designs over 8,000 stitches, add \$10.00(v) per thousand. Additional running charge is \$0.40(v) per thousand for embroidery over 8,000 stitches. Add \$5.00(r) for second location (up to 8,000 stitches). Due to nature of heavier fabrics, customer supplied digitization may require complete re-digitizing for a fee of \$60.00(v). This is waived for orders of 144 or more.
- Laser Patch: \$45.00(v). Includes black 3.75" w x 1.75" h decoration within rectangular border on 4.75" w x 2.75" h suede patch. Specify granite grey or copper suede.

### PRE-PRODUCTION SAMPLES

- Pre-production samples include a paper proof and are \$25.00(v) per product + set up charges + product price + freight. To meet required ship date for your order, pre-production samples are shipped via overnight freight, unless ground freight is requested. Pre-production samples are required for:
- Orders over \$2000.00(r)
  - Products requiring a PMS color match
  - Embroidery, ColorFusion, or Laser Patch orders

### CHANGES TO PRE-PRODUCTION SAMPLES

- New set up charges apply.
- For ColorFusion on 4-in-1 and Tuscany Picnic Blankets, there is an additional charge of \$185.00(v).

### PAPER PROOFS

Paper proofs are \$12.50(v) for orders not requiring a pre-production proof. Additional paper proof requests due to client's changes to art, imprint or product changes are \$12.50(v) each.

### OVERRUNS & UNDERRUNS

Orders are considered complete with a 5% overrun or underrun. There is a 3% charge for exact quantities. Overruns are shipped with order unless otherwise specified.

### VARIANCES

Variations in weight, size, and imprint location of ± 5% are considered to be within acceptable manufacturing tolerances. This may account for decorated images not being 100% centered. Product colors may vary from one dye lot to the next.

### PAGES 4-9 • GREYSTOKE BLANKET™/REGENCY STRIPED BLANKET™/ OXFORD ALPACA BLANKET™

- **SEE BLUE BOX FOR:** Set up charges, Samples, Proofs, Overruns, and Variances.
- Embroidery area may not exceed 6" circle on corner.

### PAGES 10-11 • NEWCASTLE SHERPA BLANKET™

- **SEE BLUE BOX FOR:** Set up charges, Samples, Proofs, Overruns, and Variances.
- Tone on Tone price includes one color on navy, black or light silver. See Tone on Tone options on page 49. Any standard ink color available for ivory.
- Embroidery area may not exceed 10" x 10" block on corner

### PAGES 12-19 • FOXHILL THROW™/BRIGHTON STRIPED BLANKET™/RIVER HILL QUARTET BLANKET™/FAIRFIELD THROW BLANKETS™

- **SEE BLUE BOX FOR:** Set up charges, Samples, Proofs, Overruns, and Variances.
- Embroidery area may not exceed: 10" x 10" block on corner on Foxhill, River Hill, and Brighton Striped Blankets or 6" circle on Fairfield Blanket.

### PAGES 20-25 • MANSFIELD SHERPA BLANKET™/ CAMBRIDGE CLASSIC THROW™/SOMERSET BLANKET™

- **SEE BLUE BOX FOR:** Samples, Proofs, Overruns, and Variances.
- Imprint area: Edge-to-edge.

### PAGES 26-31 • CLIFTON CLASSIC BLANKETS™/ KINGSTON BLANKETS™ /HIGHLANDER FOUR SEASONS BLANKET™

- **SEE BLUE BOX FOR:** Set up charges, Samples, Proofs, Overruns, and Variances.
- Tone on Tone price includes one color. See Tone on Tone options on page 49.
- Embroidery area may not exceed 10" x 10" block in corner

### PAGES 32-33 • STONEHOUSE SWEATSHIRT BLANKETS™

- **SEE BLUE BOX FOR:** Set up charges, Samples, Proofs, Overruns, and Variances.
- Blank blankets shipped folded flat and drawstrings are shipped in bulk.
- Screenprinted price includes maximum one dark color imprint on the blanket.
- Imprint area: Screenprint - 48" x 26". Embroidery may not exceed 10" x 10" block

### PAGES 34-35 • TUSCANY BACKPACK PICNIC BLANKET™

- **SEE BLUE BOX FOR:** Set up charges, Samples, Proofs, Overruns, and Variances.
- Screenprinted price includes maximum one color on bag. Screen charge: \$45.00(v).
- Colorfusion price includes unlimited colors on bag. Set up charge: \$45.00(v).
- Laser Patch price includes black imprint placed on bag or blanket.
- Embroidery price includes up to 8,000 stitches on bag or blanket.
- Imprint areas:
  - Screenprinting or Colorfusion on backpack - 6" h x 8" w.
  - Embroidery - may not exceed 6.5" circle on backpack or blanket.
  - Laser patch - 3.75" x 1.75" on 4.75" x 2.75" patch.

### PAGES 36-37 • KING'S CROSS TRAVEL PILLOW BLANKET™

- **SEE BLUE BOX FOR:** Set up charges, Samples, Proofs, Overruns, and Variances.
- Imprint area: Embroidery may not exceed 3" circle.

### PAGES 38-39 • 4-IN-1™ BLANKET

- **SEE BLUE BOX FOR:** Set up charges, Samples, Proofs, Overruns, and Variances.
- Screenprinted price includes maximum one color on backpack or poncho. Screen charge: \$45.00(v).
- Colorfusion price includes unlimited colors on backpack or poncho. Set up charge: \$45.00(v).
- Imprint areas:
  - Screenprinting or Colorfusion on backpack or poncho - 6" h x 8" w.
  - Embroidery - may not exceed 6.5" circle on tote or blanket.

### PAGES 40-41 • GAME DAY HOODED BLANKET™

- **SEE BLUE BOX FOR:** Set up charges, Samples, Proofs, Overruns, and Variances.
- Screenprinted price includes maximum one dark color imprint on blanket.
- Screen charges for one color on backpack: \$45.00(v). There is a 50% discount on re-orders.
- Imprint area: Screenprint—48" h x 26" w. Embroidery may not exceed 6" circle.



# product information

## PAGES 42-43 • ROBES

- **SEE BLUE BOX ON PAGE 48 FOR:** Set up charges, Samples, Proofs, Overruns, and Variances.
- Embroidery area may not exceed 4" circle. Please specify left chest or sleeve.
- Drawstring Travel Gift Bag is 17" x 23" and shipped bulk.
- Monogramming: Names or initials must be provided in excel format. Indicate thread color and your preferred lettering style below.



## PAGES 44-45 • ROBE GIFT SETS (GIFTS IN A BAG)

- **SEE BLUE BOX ON PAGE 48 FOR:** Samples, Proofs, Overruns and Variances.
- Prices include up to 8,000 stitches on the robe (OSFM) and a maximum one color screenprint on the slippers and drawstring bag. For CBB1-WW10, there is no color limit on the 4" w x 5" h gift card. See page 51 for 7/8" ribbon colors.
- Imprint area: Robes: May not exceed 4" circle. Slippers: 1.25" h x 3.25" w. Drawstring Bag: 12" h x 10" w. Gift Card: 3" w x 4" h.

## PAGE 46 • SLIPPERS

- **SEE BLUE BOX ON PAGE 48 FOR:** Set up charges, Samples, Proofs, Overruns, and Variances.
- Screenprinted price includes a maximum one-color imprint on each slipper. The embroidery price for the SVLC05 includes up to 6,000 stitches per slipper.
- Screen charge: \$45.00(v).
- Imprint areas: SW01 or SV02: 1.25" h x 3.25" w; VS5: 1" h x 3" w; SVLC05: 2" h x 3" w. Embroidery: 3" circle on SVLC05 only.

## PAGES 50-51 • PRESENTATION OPTIONS

- **SEE BLUE BOX ON PAGE 48 FOR:** Samples, Proofs, Overruns and Variances. All art set-up charges are \$65.00(v) and includes an actual sample proof on the card or message wrap.

### MESSAGE WRAP (WRAP)

- Printed price includes black imprint on light grey stock.
- Imprint area: 3" h x 7" w between between double lines on top and bottom.

### GIFT CARD AND SATIN RIBBON (GCRIB)

- Printed card price includes unlimited colors on ivory colored card.

### GIFT CARD & CLOTH RIBBON (WRGC)

- Printed card price includes unlimited colors on ivory or grey card.
- Gift card imprint area: 4" h x 3" w.

### BRAIDED TASSEL AND GIFT CARD (BRTC)

- Printed card price includes one color on ivory colored card.
- Gift card imprint area: 2" h x 3" w.

## PAGE 52 • PESHTEMAL BEACH TOWELS

- **SEE BLUE BOX ON PAGE 48 FOR:** Screen Charges, Sample, Proof, Overrun, Embroidery and Variance policies.
- Tone on Tone price includes one color (either black or color on color).
- Imprint area: Screenprint - 26" x 48" on Oceanis; 14" h x 30" w on Riviera. Embroidery - up to 10" circle.

## PAGE 53 • MANDALA FRINGE 360 ROUND BEACH TOWEL

- **SEE BLUE BOX ON PAGE 48 FOR:** Sample, Proof, Overrun and Variance policies.
- Price includes: 1 color.
- Imprint area: Up to 12" diameter.
- Screen charge: \$45.00(v).

## PAGE 53 • SUNNYSIDE FRINGED ROUND BEACH TOWEL

- **SEE BLUE BOX ON PAGE 48 FOR:** Screen charges, Sample, Proof, Overrun and Variance policies.
- Price includes: 1 color on grey or royal blue, up to 2 colors on white (72 min).
- Tone on Tone Effects (royal blue or grey): Translucent™, Color on Color™, or Black.
- Imprint area: Up to 26" x 48".

### tone on tone effects guide

The swatches below show how each Tone on Tone effect appears on each blanket color. Be sure to indicate which effect you want.

Blanket Color	Translucent	Color on Color	Black
Red Blanket	TRANSLUCENT	COLOR ON COLOR	BLACK
Grey Blanket	TRANSLUCENT	COLOR ON COLOR	BLACK
Black Blanket	TRANSLUCENT		
Navy Blanket	TRANSLUCENT		
Royal Blue Blanket	TRANSLUCENT	COLOR ON COLOR	BLACK
Light Silver Blanket	TRANSLUCENT	COLOR ON COLOR	BLACK
Charcoal Blanket	TRANSLUCENT	BLACK	
Granite Grey	TRANSLUCENT	BLACK	

## YOUR BLANKET DECORATING GUIDE



EMBROIDERY



COLORFUSION™



LASER PATCH



TONE ON TONE



SCREENPRINTING



# presentation options

HIGH QUALITY ACCESSORIES  
FOR ANY OCCASION



A

## A. MESSAGE WRAP

Reinforce your brand with this attention-grabbing presentation. The 4" x 26" light grey linen paper band provides immediate impact with plenty of room to express your message. Blanket rolled as shown and polybagged. Blankets with this presentation option do not get a vinyl carry case.

## B. CUSTOMIZED GIFT CARD & BLANK SATIN RIBBON

Accompany your gift in style with a blank satin ribbon and full color message on a 5" h x 4" w gift card. The Ribbon is 1" wide and available in red, white, gold, jade, hunter green, navy, burgundy, royal blue, black, light blue, yellow, silver and kelly green.



B

### Presentation Options

	1	36	72	144	288	600
A. Message wrap (WRAP)		2.10	2.00	1.90	1.85	1.80
B. Satin ribbon (RIB)		1.60	1.10	1.00	0.95	0.85
B. Printed gift card & blank satin ribbon (GCRIB)		3.25	2.75	2.25	1.95	1.75
C. Organza Bag (ORGBG)	4.90	4.80	4.60	4.50	4.40	4.30
D. Cloth ribbon (WRIB2)	1.70	1.65	1.60	1.55	1.50	1.45
E. Custom gift card & blank cloth ribbon (WRGC)		3.50	3.35	3.20	3.05	2.95
F. Braided tassel & gift card (BRTC)		3.35	3.10	3.00	2.90	2.80

Additional charges and information appear on page 49.

6R



# presentation options

---



**C. ORGANZA BAG**

Present blankets inside this sheer bag with its satin, copper colored drawstring tie. Note that bags may not be decorated. This option does not include vinyl carry case.



**D. CLOTH RIBBON**

Select this 2" wide blank ribbon, tied in an attractive tuxedo bow, to wrap around your blanket. Blankets will be folded, tied with ribbon, and placed in a protective vinyl case. Available in beige, red, grey, royal blue, or hunter green. See Option E for custom gift card.



**E. CUSTOM GIFT CARD & CLOTH RIBBON**

The 4 1/2" x 5 1/2" card brings your full-color message to the forefront and is held in place with a blank cloth ribbon.

Blankets with this option have the ribbon and card attached and are shipped in a protective vinyl case. Ribbon colors: beige, red, grey, royal blue, or hunter green.



**F. BRAIDED TASSEL AND GIFT CARD**

Dress up your gift! Each blanket gets folded and tied with a braided tassel and placed in a zippered vinyl case. Braid colors: silver, champagne, or empire blue. Includes attached custom gift card with message or logo.



Is it a blanket? Is it a towel? Either way, it's a unique year-round gift.



■ OCEANIS PESHTEMAL BEACH TOWEL™

Our two-ply Oceanis Peshtemal Beach Towel is made with 100% woven cotton fabric in front with a vintage, one-of-a-kind finish that gives each towel its own unique flavor. While the decorated front feels like linen, the reverse side, with soft terry backing, provides quick-drying absorbency. Hand-knotted fringes attached to the waffle weave end hems present extra style that explains its popularity. Available in turquoise or grey, each with white accents. 35" x 63". 13.5 lbs/doz.

**OPBT**

	1	36	72	144	288	600
Blank	30.50	29.95	28.95	27.75	26.50	25.50
Tone on Tone		35.25	32.75	31.50	30.25	29.95
Embroidered		36.50	33.95	32.75	31.50	30.50

Additional charges apply, see page 49.

6R



■ RIVIERA PESHTEMAL BEACH TOWEL™

When you're looking for the highest quality Peshtemal beach towel, this is it! With its thick and absorbent terry backing, this exotic and elegant towel soaks up water and dries more quickly than most other towels. The 100% woven cotton front is exquisitely soft and provides crisp definition to your printed logo. When it comes to fashion, the hand-knotted fringed hems break new ground. Grey/white or blue/white. Oversized 39" x 70", 15 lbs/doz.

**RP35**

	1	36	72	144	288	600
Blank	36.50	35.95	34.95	33.75	32.50	30.50
Tone on Tone		41.50	40.50	38.95	36.95	34.95
Embroidered		43.25	42.25	40.75	38.95	36.50

Additional charges apply, see page 49.

6R







**MANDALA FRINGE 360 ROUND BEACH TOWEL™**

No matter how you look at it, our high-quality Mandala Fringe Round Beach Towel is the way to go. Let's start with the hand-knotted fringe trim for extra sophistication plus the super thick 100% cotton velour fabric for absorbency. The Mandala multi-colored stock design, which symbolizes unity and harmony, is centered around the 12" diameter imprint area for your logo. These simple ingredients make this towel a real winner. Select from stock design graphics in turquoise/royal/navy or charcoal/grey/black, with your logo in the center. 60" round, 26 lbs./doz.

**M360FT**

	1	36	72	144	288	600
Blank	46.25	45.50	44.50	42.95	40.95	38.75
Screenprinted/1 color	50.95	49.75	47.95	45.75	42.95	
Additional charges apply, see page 49.						6R



**SUNNYSIDE FRINGED ROUND BEACH TOWEL™**

This round and thick towel is available in solid colors so you can print your logo as large as 26" x 48". Made from the finest material, this lavish towel is 100% cotton velour with hand-knotted fringes around the hem. Royal blue, grey or white with white fringes. 60" round. 26 lbs./doz.

**SDRND**

SDRND - WHITE	1	36	72	144	288	600
Blank	38.95	37.95	36.75	35.50	33.95	32.95
Screenprinted (1 color)	41.50	40.25	38.95	37.50	36.50	
Screenprinted (up to 2-colors)		41.75	40.50	38.95	37.95	
SDRND - ROYAL BLUE OR GREY						
Blank	39.95	38.95	37.75	36.50	34.95	33.95
Tone on Tone		43.95	42.75	41.50	39.95	38.95
Additional information appears on page 49.						6R







Visit [cobblestonemills.com](http://cobblestonemills.com)  
or order a catalog for exceptional  
blanket and robe gifts.



Visit [xpresstowels.com](http://xpresstowels.com) or order  
a catalog for the fastest service  
in the industry for beach towels  
with no rush charges.



Visit [towelspecialties.com](http://towelspecialties.com)  
for innovative towels,  
bags and accessories of the  
finest quality.

towel specialties

VOTED #1  
supplier of  
blankets by  
industry  
distributors.



Three great brands from the  
ASI Supplier of the Year!

Trust your brand to the NUMBER ONE  
supplier in the industry.

Go with the Gold Winner of the  
2019 ASI Distributor Choice Award  
for Best Blanket Supplier!