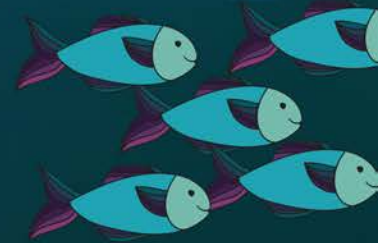
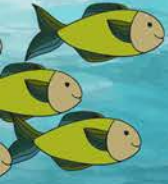


AMERICAN ZEBRA LINE

2020 Catalog



PPAI 111698

UPIC AMZEBRA

ASI 35745

SAGE 50724

American Zebra Line

NO CHARGE 3 DAY RUSH SERVICE

PLEASE CALL FACTORY TO CONFIRM IF YOUR ORDER QUALIFIES FOR **NO-CHARGE 3-DAY RUSH SERVICE**.

Production will be 3 business days from receipt of ALL items listed below.

1. Complete Purchase Order stating "3-Day Service." Vector art must be received BEFORE 10:00AM CST, Monday-Friday. Note: Detailed art or halftones are not considered usable art. Typesettings are NOT possible on Rush orders.
2. Waive Art Layout Proof - For verification purposes, submit either a JPG or fax a "Hard Copy" of art stating WAIVE PROOF which allows us to confirm and verify your submitted VECTOR art file. WE CANNOT PROCESS YOUR ORDER WITHOUT THIS ART WAIVER.
3. One color imprint only.
4. Customer's choice of ship method must be listed on Purchase Order.
5. Payment status must be current and/or received.

Available Items & Quantities



#BIK24W - 24oz.
100 - 500 Pieces



#BIK20TR - 20oz.
100 - 500 Pieces



#8722 - 22oz.
100 - 1000 Pieces



#8716 - 16oz.
100 - 1000 Pieces



#8112 - 12oz.
100 - 1000 Pieces



#TPC16
100 - 500 Pieces



#BT16
120 - 600 Pieces



#ZZF
100 - 500 Pieces



#FSK
100 - 1000 Pieces



#EFSK
100 - 1000 Pieces

TABLE OF CONTENTS

FSK • FSK-CAMO • FSK4CP • EFSK • WBS.....	4-5
NPSK • NPSK4CP.....	6
NPZB • NPZB4CP.....	7
SZB • SZB4CP.....	8
CW • CW4CP.....	9
BFSK • BFSK4CP.....	10
TBFSK • TBFSK4CP.....	11
LBS • LBS4CP.....	12
AS16 • AS16-4CP.....	13
SLFSK • SLFSK4CP.....	14
PFSK • PFSK4CP.....	15
PGFSK • PGFSK4CP.....	16
CF-RIBB • CF-RIBB4CP.....	17
CF-TROP • CF-TROP4CP.....	18
CF-FLAG • CF-FLAG4CP.....	19
CF-HAT • CF-HAT4CP.....	20
CF-BALL • CF-BALL4CP.....	21
CF-CRAW • CF-CRAW.....	22
CF2-CRAW • CF2-CRAW4CP.....	23
CF CRAZY FRIO.....	24-25
COA • COA4CP.....	26
CF2 CRAZY FRIO.....	27
TPC 16 THE PART CUP.....	28
BT16 BOLERO TUMBLER.....	29
8112 • 8716 • 8722 STADIUM CUPS.....	30-32
BSB20P • BIK20FT.....	33
BIK20W • BIK24W.....	34
BIK20TR • BIK24TR.....	35
MUGS & TUMBLERS.....	36-37
MAGNETIC CLIPS.....	38
CC01 • CC02 • SPOUCH • TM01.....	39
DA08 • HB01 • TL16.....	40
FND001 • ZZF FLYING DISCS.....	41
PAPER CUPS.....	42
9PC • 12PC • 16PC COLD CUPS.....	43
FOAM CUPS.....	44-45
NAPKINS.....	46-47
FABRIC COLORS.....	48
4CP BACKGROUND COLORS.....	49
GENERAL INFORMATION.....	50-51

YELLOW HIGHLIGHTED AREA DENOTES ALL-YEAR PROMOTIONAL SPECIALS



indicates a Best Selling item



indicates that all materials in this item are made in the USA



indicates an item that may qualify for 3-Business Day Production. See page 2.



All Products Made in 



- Holds 12oz. Can
- Item Size: 4"H x 4"W
- Imprint Area:
3 1/2" x 3 1/2" Sides
1 3/4" Bottom



#FSK-CAMO FRIO SOCK™

- 2 Stock Camo Colors: Camo Tan and Camo Green
- 1/8" High Density, Cloth Laminated Open-Cell Foam
- Nylon Lining

#FSK FRIO SOCK™

- 24 Stock Colors
- 1/8" High Density, Cloth Laminated Open-Cell Foam
- Brush Tricot Lining

Screen/Set-Up Charge: \$50.00(V) per Color
Multi-Color Imprint: 250 Piece Minimum Required
Additional Color Charge: \$0.30(V) per Color
Assorted Colors within an Order: 50 per Color Minimum

Stock Foam Colors Shown on Page 48

Shown Colors are Tonal Match Only; Not Exact
 See Pages 50-51 for General Information.

Due to laminated surface of these products art restrictions apply.

Color and Foam consistency may vary within and from order to order.

This is considered acceptable and within industry standards.

FSK4CP See Page 50-51 Regarding Dye Sublimation Art Acceptance & Specifications. Art Must be submitted ready to use on desired template.

Templates are located on our website:
www.americanzebra.com



Shown Colors are Tonal Match Only; Not Exact.

#FSK4CP

- Full Color, All-Over Imprint
- Your Graphics or Ours! See pg. 49 for Stock Colors and Backgrounds
- Screen/Set-up Charge: \$50.00(V)

ITEM	DESCRIPTION	100	250	500	1000	CODE	PKG	GDW	MIN QTY
FSK	FRIO SOCK™	\$.63	\$.63	\$.63	\$.63	4R	BULK	VARIABLES	100*
FSK-CAMO	FRIO SOCK™ CAMO	\$.73	\$.73	\$.73	\$.73	4R	BULK	VARIABLES	100*

** for one color imprints*

ITEM	DESCRIPTION	100	250	500	1000	CODE	PKG	GDW	MIN QTY
FSK4CP	FSK SUBLIMATION	\$ 1.00	\$ 1.00	\$ 1.00	\$ 1.00	4R	BULK	VARIABLES	100



#EFSK ECONO FRIO SOCK™

• 22 Stock Colors (Lt. Pink, Lt. Brown & Camos Not Offered)

- 1/8" Low Density, Cloth Laminated Open-Cell Foam
- Nylon Lining
- Holds 12oz. Can
- Item Size: 4"H x 4"W
- Imprint Area: 3½" x 3½" Sides, 1¾" Bottom



All Products Made in 

#WBS WINE/CHAMPAGNE BOTTLE SLEEVE

- 1/8" High Density, Cloth Laminated Open-Cell Foam
- Brush Tricot Lining
- Holds most white wine/champagne bottles
- Item Size: 7½"H x 4½"W
- Imprint Area Side 2: 5"H x 4"W - Back Side, No Bottom

Stock Tuxedo design included



Note: Item is NOT Pre-Printed, Option to select material and imprint color. Shown design will be included with your submitted art and will print in the same ink color.

Screen/Set-Up Charge: \$50.00(V) per Color
Multi-Color Imprint: 250 Piece Minimum Required, except #WBS
Additional Color Charge: \$0.30(V) per Color
Assorted Colors within an Order: 50 per Color Minimum. \$3.00 (Z) per color for #WBS
Stock Foam Colors Shown on Page 48
 Shown Colors are Tonal Match Only; Not Exact
 See Pages 50-51 for General Information.
 Due to laminated surface of these products art restrictions apply.
 Color and Foam consistency may vary within and from order to order.
 This is considered acceptable and within industry standards.

ITEM	DESCRIPTION	100	250	500	1000	CODE	PKG	GDW	MIN QTY
EFSK	ECONO FRIO SOCK	\$.49	\$.49	\$.49	\$.49	4R	BULK	VARIES	100*

** for one color imprints*

ITEM	DESCRIPTION	25	50	75	100	CODE	PKG	GDW	MIN QTY
WBS	WINE BOTTLE SLEEVE	\$2.29	\$2.09	\$1.99	\$1.89	4R	BULK	VARIES	25*

** for one color imprints*



#NPSK 3MM NEOPRENE™ BEVERAGE SOCK

- Holds 12oz. Can
- Item Size: 4"H x 4"W
- Imprint Area: 3" x 2 7/8" Sides, 1 3/4" Bottom
- 43 Stock Neoprene Colors
- 3mm Neoprene, Closed-Cell Foam
- Standard Zig-Zag Tonal-Match Stitching
- Spring Camo & Fall Camo add \$.15(V)

#NPSK4CP

- Full Color, All-Over Imprint
- Your Graphics or Ours! See pg. 49 for Stock Colors and Backgrounds
- Screen/Set-up Charge: \$50.00(V)

Screen/Set-Up Charge: \$50.00(V) per Color
Multi-Color Imprint: 250 Piece Minimum Required
Additional Color Charge: \$0.30(V) per Color
Assorted Colors within an Order: 50 per Color Minimum. \$3.00(Z) per Color for NPSK only.
Stock Neoprene Colors Shown on Page 48
 Shown Colors are Tonal Match Only; Not Exact
 See Pages 50-51 for General Information.
 Due to laminated surface of these products art restrictions apply.
 Color and Foam consistency may vary within and from order to order.
 This is considered acceptable and within industry standards.

NPSK4CP See Page 50-51 Regarding Dye Sublimation Art Acceptance & Specifications. Art Must be submitted ready to use on desired template. Templates are located on our website: www.americanzebra.com



ITEM	DESCRIPTION	100	250	500	1000	CODE	PKG	GDW	MIN QTY
NPSK	NEOPRENE SOCK	\$1.10	\$1.10	\$1.10	\$1.10	4R	BULK	VARIABLES	100*

* for one color imprints

ITEM	DESCRIPTION	100	250	500	1000	CODE	PKG	GDW	MIN QTY
NPSK4CP	NPSK SUBLIMATION	\$1.53	\$1.53	\$1.53	\$1.53	4R	BULK	VARIABLES	100

#NPZB NEOPRENE™ ZIPPER BOTTLE HOLDER

- Holds Standard 12oz. Long Neck Bottle
- Item Size: 7"H x 3¾"W
- Imprint Area: 2 1/8" x 2 7/8" Zipper Side, 3" x 2 7/8" Back, 1¾" Bottom
- 43 Stock Neoprene Colors
- 3mm Neoprene, Closed-Cell Foam
- Standard Zig-Zag Tonal-Match Stitching
- Spring Camo & Fall Camo add \$.15(V)



#NPZB4CP

- Full Color, All-Over Imprint
- Your Graphics or Ours! See pg. 49 for Stock Colors and Backgrounds
- Screen/Set-up Charge: \$50.00(V)



Screen/Set-Up Charge: \$50.00(V) per Color
Multi-Color Imprint: 250 Piece Minimum Required
Additional Color Charge: \$0.30(V) per Color
Assorted Colors within an Order: 50 per Color Minimum. \$3.00(Z) per Color for NPZB only.
Stock Neoprene Colors Shown on Page 48
 Shown Colors are Tonal Match Only; Not Exact See Pages 50-51 for General Information.
 Due to laminated surface of these products art restrictions apply.
 Color and Foam consistency may vary within and from order to order.
 This is considered acceptable and within industry standards.

NPZB4CP See Page 50-51 Regarding Dye Sublimation Art Acceptance & Specifications. Art Must be submitted ready to use on desired template.
 Templates are located on our website:
www.americanzebra.com

ITEM	DESCRIPTION	100	250	500	1000	CODE	PKG	GDW	MIN QTY
NPZB	NEOPRENE ZIPPLE BOTTLE	\$2.54	\$2.54	\$2.54	\$2.54	4R	BULK	VARIES	100*

* for one color imprints

ITEM	DESCRIPTION	100	250	500	1000	CODE	PKG	GDW	MIN QTY
NPZB4CP	NPZB SUBLIMATION	\$2.89	\$2.89	\$2.89	\$2.89	4R	BULK	VARIES	100



#SZB SCUBA ZIPPER BOTTLE HOLDER

- Holds Standard 12oz. Long Neck Bottle
- Item Size: 7½”H x 3¾”W
- Imprint Area: 2” x 3 ½” Zipper Side, 4” x 3½” Back, 1¾” Bottom
- 26 Stock Colors. Camo Tan & Camo Green add \$.15(V)
- 1/8” High Density, Cloth Laminated Open-Cell Foam
- Brush Tricot Lining



#SZB4CP

- Full Color, All-Over Imprint
- Your Graphics or Ours! See pg. 49 for Stock Colors and Backgrounds
- Screen/Set-up Charge: \$50.00(V)

Screen/Set-Up Charge: \$50.00(V) per Color
Multi-Color Imprint: 250 Piece Minimum Required
Additional Color Charge: \$0.30(V) per Color
Assorted Colors within an Order: 50 per Color Minimum. \$3.00(Z) per Color for SZB only.
Stock Foam Colors Shown on Page 48
 Shown Colors are Tonal Match Only; Not Exact See Pages 50-51 for General Information.
 Due to laminated surface of these products art restrictions apply.
 Color and Foam consistency may vary within and from order to order.
 This is considered acceptable and within industry standards.

SZB4CP See Page 50-51 Regarding Dye Sublimation Art Acceptance & Specifications. Art Must be submitted ready to use on desired template.
Templates are located on our website:
www.americanzebra.com

ITEM	DESCRIPTION	100	250	500	1000	CODE	PKG	GDW	MIN QTY
SZB	SCUBA ZIPPER BOTTLE	\$1.94	\$1.94	\$1.94	\$1.94	4R	BULK	VARIES	100*

* for one color imprints

ITEM	DESCRIPTION	100	250	500	1000	CODE	PKG	GDW	MIN QTY
SZB4CP	SZB SUBLIMATION	\$2.44	\$2.44	\$2.44	\$2.44	4R	100	30#	100

#CW COFFEE WRAP™

- Holds 16oz. (Grande) Paper or Foam Cup
- Item Size: 3”H x 4 5/8”W
- Imprint Area: 2” x 4” Front Imprint Only
- 26 Stock Colors. Camo Tan & Camo Green add \$.15(V)
- 1/8” High Density, Cloth Laminated Open-Cell Foam
- Brush Tricot Lining



#CW4CP

- Full Color, All-Over Imprint
- Your Graphics or Ours! See pg. 49 for Stock Colors and Backgrounds
- Screen/Set-up Charge: \$50.00(V)

Screen/Set-Up Charge: \$50.00(V) per Color
Multi-Color Imprint: 250 Piece Minimum Required
Additional Color Charge: \$0.30(V) per Color
Assorted Colors within an Order: 50 per Color Minimum. \$3.00(Z) per Color for CW only.
Stock Foam Colors Shown on Page 48
 Shown Colors are Tonal Match Only; Not Exact
 See Pages 50-51 for General Information.
 Due to laminated surface of these products art restrictions apply.
 Color and Foam consistency may vary within and from order to order.
 This is considered acceptable and within industry standards.

CW4CP See Page 50-51 Regarding Dye Sublimation Art Acceptance & Specifications. Art Must be submitted ready to use on desired template.
Templates are located on our website:
www.americanzebra.com

ITEM	DESCRIPTION	100	250	500	1000	CODE	PKG	GDW	MIN QTY
CW	COFFEE WRAP	\$.52	\$.52	\$.52	\$.52	4R	BULK	VARIES	100*

* for one color imprints

ITEM	DESCRIPTION	100	250	500	1000	CODE	PKG	GDW	MIN QTY
CW4CP	CW SUBLIMATION	\$.87	\$.87	\$.87	\$.87	4R	100	30#	100



#BFSK BOTTLE FRIO SOCK™

- Holds Standard 12oz. Long Neck Bottle
- Item Size: 4½”H x 3½”W
- Imprint Area: 3” x 3 ” Sides, 1¼” Bottom
- 26 Stock Colors. Camo Tan & Camo Green add \$.15(V)
- 1/8” High Density, Cloth Laminated Open-Cell Foam
- Brush Tricot Lining



#BFSK4CP

- Full Color, All-Over Imprint
- Your Graphics or Ours! See pg. 49 for Stock Colors and Backgrounds
- Screen/Set-up Charge: \$50.00(V)

Screen/Set-Up Charge: \$50.00(V) per Color
Multi-Color Imprint: 250 Piece Minimum Required
Additional Color Charge: \$0.30(V) per Color
Assorted Colors within an Order: 50 per Color Minimum. \$3.00(Z) per color BFSK only.
Stock Foam Colors Shown on Page 48
 Shown Colors are Tonal Match Only; Not Exact
 See Pages 50-51 for General Information.
 Due to laminated surface of these products art restrictions apply.
 Color and Foam consistency may vary within and from order to order.
 This is considered acceptable and within industry standards.

BFSK4CP See Page 50-51 Regarding Dye Sublimation Art Acceptance & Specifications. Art Must be submitted ready to use on desired template.
 Templates are located on our website:
www.americanzebra.com

ITEM	DESCRIPTION	100	250	500	1000	CODE	PKG	GDW	MIN QTY
BFSK	BOTTLE FRIO SOCK™	\$.88	\$.88	\$.88	\$.88	4R	BULK	VARIES	100*

* for one color imprints

ITEM	DESCRIPTION	100	250	500	1000	CODE	PKG	GDW	MIN QTY
BFSK4CP	BFSK SUBLIMATION	\$ 1.50	\$ 1.50	\$ 1.50	\$ 1.50	4R	BULK	VARIES	100

#TBFSK TALL BOY FRIO SOCK™

- Holds 16oz. Aluminum Bottle
- Item Size: 6"H x 3¼"W
- Imprint Area: 4¾" x 3 ½" Sides, 1¾" Bottom
- 26 Stock Colors. Camo Tan & Camo Green add \$.15(V)
- 1/8" High Density, Cloth Laminated Open-Cell Foam
- Brush Tricot Lining



#TBFSK4CP

- Full Color, All-Over Imprint
- Your Graphics or Ours! See pg. 49 for Stock Colors and Backgrounds
- Screen/Set-up Charge: \$50.00(V)

Screen/Set-Up Charge: \$50.00(V) per Color
Multi-Color Imprint: 250 Piece Minimum Required
Additional Color Charge: \$0.30(V) per Color
Assorted Colors within an Order: 50 per Color Minimum. \$3.00(Z) per color TBFSK only.
Stock Foam Colors Shown on Page 48
 Shown Colors are Tonal Match Only; Not Exact See Pages 50-51 for General Information.
 Due to laminated surface of these products art restrictions apply.
 Color and Foam consistency may vary within and from order to order.
 This is considered acceptable and within industry standards.

TBFSK See Page 50-51 Regarding Dye Sublimation Art Acceptance & Specifications. Art Must be submitted ready to use on desired template.
 Templates are located on our website:
www.americanzebra.com

ITEM	DESCRIPTION	100	250	500	1000	CODE	PKG	GDW	MIN QTY
TBFSK	TALL BOY FRIO SOCK™	\$1.29	\$1.29	\$1.29	\$1.29	4R	BULK	VARIES	100*

* for one color imprints

ITEM	DESCRIPTION	100	250	500	1000	CODE	PKG	GDW	MIN QTY
TBFSK4CP	TBFSK SUBLIMATION	\$1.84	\$1.84	\$1.84	\$1.84	4R	BULK	VARIES	100

#LBS LONGNECK BOTTLE SLEEVE

- Holds Standard 12oz. Long Neck Bottle
- Item Size: 7½”H x 3¾”W
- Imprint Area: 3” x 3” Sides
- 26 Stock Colors. Camo Tan & Camo Green add \$.15(V)
- 1/8” High Density, Cloth Laminated Open-Cell Foam
- Brush Tricot Lining



Screen/Set-Up Charge: \$50.00(V) per Color
Multi-Color Imprint: 250 Piece Minimum Required
Additional Color Charge: \$0.30(V) per Color
Assorted Colors within an Order: 50 per Color Minimum. \$3.00(Z) per color LBS only.
Stock Foam Colors Shown on Page 48
 Shown Colors are Tonal Match Only; Not Exact
 See Pages 50-51 for General Information.
 Due to laminated surface of these products art restrictions apply.
 Color and Foam consistency may vary within and from order to order.
 This is considered acceptable and within industry standards.

LBS4CP See Page 50-51 Regarding Dye Sublimation Art Acceptance & Specifications. Art Must be submitted ready to use on desired template.
 Templates are located on our website:
www.americanzebra.com

#LBS4CP

- Full Color, All-Over Imprint
- Your Graphics or Ours!
 See pg. 49 for Stock Colors and Backgrounds
- Screen/Set-up Charge: \$50.00(V)

ITEM	DESCRIPTION	100	250	500	1000	CODE	PKG	GDW	MIN QTY
LBS	LONGNECK BOTTLE NECK	\$1.05	\$1.05	\$1.05	\$1.05	4R	BULK	VARIABLES	100*

* for one color imprints

ITEM	DESCRIPTION	100	250	500	1000	CODE	PKG	GDW	MIN QTY
LBS4CP	LBS SUBLIMATION	\$1.55	\$1.55	\$1.55	\$1.55	4R	BULK	VARIABLES	100

#AS16 ARCTIC SLEEVE

- Holds 16oz. Bottled Water
- Item Size: 5¾”H x 4¼”W
- Imprint Area: 4” x 3¾” Sides, 1 7/8” Bottom
- 26 Stock Colors. Camo Tan & Camo Green add \$.15(V)
- 1/8” High Density, Cloth Laminated Open-Cell Foam
- Brush Tricot Lining

#AS16-4CP

- Full Color, All-Over Imprint
- Your Graphics or Ours! See pg. 49 for Stock Colors and Backgrounds
- Screen/Set-up Charge: \$50.00(V)



Screen/Set-Up Charge: \$50.00(V) per Color
Multi-Color Imprint: 250 Piece Minimum Required
Additional Color Charge: \$0.30(V) per Color
Assorted Colors within an Order: 50 per Color Minimum. \$3.00(Z) per color AS16 only.
Stock Foam Colors Shown on Page 48
 Shown Colors are Tonal Match Only; Not Exact
 See Pages 50-51 for General Information.
 Due to laminated surface of these products art restrictions apply.
 Color and Foam consistency may vary within and from order to order.
 This is considered acceptable and within industry standards.

AS16-4CP See Page 50-51 Regarding Dye Sublimation Art Acceptance & Specifications. Art Must be submitted ready to use on desired template.
Templates are located on our website:
www.americanzebra.com

ITEM	DESCRIPTION	100	250	500	1000	CODE	PKG	GDW	MIN QTY
AS16	ARCTIC SLEEVE	\$1.29	\$1.29	\$1.29	\$1.29	4R	BULK	VARIABLES	100*

* for one color imprints

ITEM	DESCRIPTION	100	250	500	1000	CODE	PKG	GDW	MIN QTY
AS16-4CP	AS16 SUBLIMATION	\$1.99	\$1.99	\$1.99	\$1.99	4R	BULK	VARIABLES	100

#SLFSK SLIM FRIO SOCK

- Holds 12oz. Slim Can
- Item Size: 5 1/8"H x 3 3/4"W
- Imprint Area: 4 3/4" x 2 7/8" Sides, 1 1/2" Bottom
- 26 Stock Colors. Camo Tan & Camo Green add \$.15(V)
- 1/8" High Density, Cloth Laminated Open-Cell Foam
- Brush Tricot Lining

#SLFSK4CP

- Full Color, All-Over Imprint
- Your Graphics or Ours! See pg. 49 for Stock Colors and Backgrounds
- Screen/Set-up Charge: \$50.00(V)



Screen/Set-Up Charge: \$50.00(V) per Color
Multi-Color Imprint: 250 Piece Minimum Required
Additional Color Charge: \$0.30(V) per Color
Assorted Colors within an Order: 50 per Color Minimum. \$3.00(Z) per color SLFSK only.
Stock Foam Colors Shown on Page 48
 Shown Colors are Tonal Match Only; Not Exact
 See Pages 50-51 for General Information.
 Due to laminated surface of these products art restrictions apply.
 Color and Foam consistency may vary within and from order to order.
 This is considered acceptable and within industry standards.

SLFSK4CP See Page 50-51 Regarding Dye Sublimation Art Acceptance & Specifications.
Art Must be submitted ready to use on desired template.

Templates are located on our website:
www.americanzebra.com



ITEM	DESCRIPTION	100	250	500	1000	CODE	PKG	GDW	MIN QTY
SLFSK	SLIM FRIO SOCK™	\$.85	\$.85	\$.85	\$.85	4R	BULK	VARIABLES	100*

* for one color imprints

ITEM	DESCRIPTION	100	250	500	1000	CODE	PKG	GDW	MIN QTY
SLFSK4CP	SLFSK SUBLIMATION	\$ 1.20	\$ 1.20	\$ 1.20	\$ 1.20	4R	BULK	VARIABLES	100

#PFSK POWER FRIO SOCK

- Holds 8.4oz Energy Drink Can
- Item Size: 4 3/8”H x 3 1/4”W
- Imprint Area: 2 1/2” x 2 1/2” Sides, 1 3/4” Bottom
- 26 Stock Colors. Camo Tan & Camo Green add \$.15(V)
- 1/8” High Density, Cloth Laminated Open-Cell Foam
- Brush Tricot Lining



#PFSK4CP

- Full Color, All-Over Imprint
- Your Graphics or Ours! See pg. 49 for Stock Colors and Backgrounds
- Screen/Set-up Charge: \$50.00(V)

Screen/Set-Up Charge: \$50.00(V) per Color
Multi-Color Imprint: 250 Piece Minimum Required
Additional Color Charge: \$0.30(V) per Color
Assorted Colors within an Order: 50 per Color Minimum. \$3.00(Z) per color PFSK only.
Stock Foam Colors Shown on Page 48
 Shown Colors are Tonal Match Only; Not Exact
 See Pages 50-51 for General Information.
 Due to laminated surface of these products art restrictions apply.
 Color and Foam consistency may vary within and from order to order.
 This is considered acceptable and within industry standards.

PFSK4CP See Page 50-51 Regarding Dye Sublimation Art Acceptance & Specifications. Art Must be submitted ready to use on desired template. Templates are located on our website: www.americanzebra.com

ITEM	DESCRIPTION	100	250	500	1000	CODE	PKG	GDW	MIN QTY
PFSK	POWER FRIO SOCK™	\$.69	\$.69	\$.69	\$.69	4R	BULK	VARIABLES	100*

* for one color imprints

ITEM	DESCRIPTION	100	250	500	1000	CODE	PKG	GDW	MIN QTY
PFSK4CP	PFSK SUBLIMATION	\$ 1.15	\$ 1.15	\$ 1.15	\$ 1.15	4R	BULK	VARIABLES	100

#PGFSK PUB GLASS FRIO SOCK

- Holds Standard 16oz. Pint Glass
- Item Size: 4 3/8"H x 3 1/4"W
- Imprint Area: 3 1/2" x 3 1/2" Sides, 1 1/2" Bottom
- 26 Stock Colors. Camo Tan & Camo Green add \$.15(V)
- 1/8" High Density, Cloth Laminated Open-Cell Foam
- Brush Tricot Lining

**PGFSK also fits our item
TPC16. See page 28.**



#PGFSK4CP

- Full Color, All-Over Imprint
- Your Graphics or Ours! See pg. 49 for Stock Colors and Backgrounds
- Screen/Set-up Charge: \$50.00(V)



Screen/Set-Up Charge: \$50.00(V) per Color
Multi-Color Imprint: 250 Piece Minimum Required
Additional Color Charge: \$0.30(V) per Color
Assorted Colors within an Order: 50 per Color Minimum. \$3.00(Z) per color PGFSK only.
Stock Foam Colors Shown on Page 48
 Shown Colors are Tonal Match Only; Not Exact
 See Pages 50-51 for General Information.
 Due to laminated surface of these products art restrictions apply.
 Color and Foam consistency may vary within and from order to order.
 This is considered acceptable and within industry standards.

PGFSK4CP See Page 50-51 Regarding Dye Sublimation Art Acceptance & Specifications. Art Must be submitted ready to use on desired template.
Templates are located on our website:
www.americanzebra.com

ITEM	DESCRIPTION	100	250	500	1000	CODE	PKG	GDW	MIN QTY
PGFSK	PUB GLASS FRIO SOCK™	\$1.45	\$1.45	\$1.45	\$1.45	4R	BULK	VARIES	100*

* for one color imprints

ITEM	DESCRIPTION	100	250	500	1000	CODE	PKG	GDW	MIN QTY
PGFSK4CP	PGFSK SUBLIMATION	\$1.75	\$1.75	\$1.75	\$1.75	4R	BULK	VARIES	100

#CF-RIBB CRAZY FRIO RIBBON

- Holds 12oz. Can
- Item Size: 4”H x 4”W
- Imprint Area: 7/8” x 3 1/2” Side 1 (Under Ribbon), 3 1/2” x 3 1/2” Side 2, 1 3/4” Bottom
- 26 Stock Colors. Camo Tan & Camo Green add \$.15(V)
- 1/8” High Density, Cloth Laminated Open-Cell Foam
- Brush Tricot Lining

Option to incorporate your own Ribbon design.

Note: Item is NOT Pre-Printed.
Option to select material and imprint color. Shown design will be included with your submitted art and will print in the same ink color.



#CF-RIBB4CP

- Full Color, All-Over Imprint
- Your Graphics or Ours! See pg. 49 for Stock Colors and Backgrounds
- Screen/Set-up Charge: \$50.00(V)

Screen/Set-Up Charge: \$50.00(V) per Color
Multi-Color Imprint: 250 Piece Minimum Required
Additional Color Charge: \$0.30(V) per Color
Assorted Colors within an Order: 50 per Color Minimum. \$3.00(Z) per color CF-RIBB only.
Stock Foam Colors Shown on Page 48
 Shown Colors are Tonal Match Only; Not Exact
 See Pages 50-51 for General Information.
 Due to laminated surface of these products art restrictions apply.
 Color and Foam consistency may vary within and from order to order.
 This is considered acceptable and within industry standards.

CF-RIBB4CP See Page 50-51 Regarding Dye Sublimation Art Acceptance & Specifications. Art Must be submitted ready to use on desired template.
 Templates are located on our website:
www.americanzebra.com

ITEM	DESCRIPTION	100	250	500	1000	CODE	PKG	GDW	MIN QTY
CF-RIBB	CRAZY FRIO™ RIBBON	\$.80	\$.80	\$.80	\$.80	4R	BULK	VARIABLES	100*

* for one color imprints

ITEM	DESCRIPTION	100	250	500	1000	CODE	PKG	GDW	MIN QTY
CF-RIBB4CP	CF-RIBB SUBLIMATION	\$ 1.20	\$ 1.20	\$ 1.20	\$ 1.20	4R	BULK	VARIABLES	100

CF-TROP • CF-TROP4CP



#CF-TROP CRAZY FRIO TROPICAL

- Holds 12oz. Can
- Item Size: 4"H x 4"W
- Imprint Area: 1¼" x 2½" Side 1 (Under Tree), 3½" x 3½" Side 2, 1¾" Bottom
- 26 Stock Colors. Camo Tan & Camo Green add \$.15(V)
- 1/8" High Density, Cloth Laminated Open-Cell Foam
- Brush Tricot Lining

Option to incorporate your own Palm Tree design.

Note: Item is NOT Pre-Printed.
Option to select material and imprint color. Shown design will be included with your submitted art and will print in the same ink color.



#CF-TROP4CP

- Full Color, All-Over Imprint
- Your Graphics or Ours! See pg. 49 for Stock Colors and Backgrounds
- Screen/Set-up Charge: \$50.00(V)

Screen/Set-Up Charge: \$50.00(V) per Color
Multi-Color Imprint: 250 Piece Minimum Required
Additional Color Charge: \$0.30(V) per Color
Assorted Colors within an Order: 50 per Color Minimum. \$3.00(Z) per color CF-TROP only.
 Shown Colors are Tonal Match Only; Not Exact See Pages 50-51 for General Information.
 Due to laminated surface of these products art restrictions apply.
 Color and Foam consistency may vary within and from order to order.
 This is considered acceptable and within industry standards.

CF-TROP4CP See Page 50-51 Regarding Dye Sublimation Art Acceptance & Specifications. Art Must be submitted ready to use on desired template.
 Templates are located on our website:
www.americanzebra.com

ITEM	DESCRIPTION	100	250	500	1000	CODE	PKG	GDW	MIN QTY
CF-TROP	CRAZY FRIO™ TROPICAL	\$.80	\$.80	\$.80	\$.80	4R	BULK	VARIABLES	100*

* for one color imprints

ITEM	DESCRIPTION	100	250	500	1000	CODE	PKG	GDW	MIN QTY
CF-TROP4CP	CF-TROP SUBLIMATION	\$ 1.20	\$ 1.20	\$ 1.20	\$ 1.20	4R	BULK	VARIABLES	100

#CF-FLAG CRAZY FRIO FLAG

- Holds 12oz. Can
- Item Size: 4"H x 4"W
- Imprint Area: 1¼" x 3½" Side 1 (Under Flag), 3½" x 3½" Side 2, 1¼" Bottom
- 26 Stock Colors. Camo Tan & Camo Green add \$.15(V)
- 1/8" High Density, Cloth Laminated Open-Cell Foam
- Brush Tricot Lining

Option to incorporate your own Flag design.

Note: Item is NOT Pre-Printed.

Option to select material and imprint color. Shown design will be included with your submitted art and will print in the same ink color.



#CF-FLAG4CP

- Full Color, All-Over Imprint
- Your Graphics or Ours! See pg. 49 for Stock Colors and Backgrounds
- Screen/Set-up Charge: \$50.00(V)



Screen/Set-Up Charge: \$50.00(V) per Color
Multi-Color Imprint: 250 Piece Minimum Required
Additional Color Charge: \$0.30(V) per Color
Assorted Colors within an Order: 50 per Color Minimum. \$3.00(Z) per color CF-FLAG only.
Stock Foam Colors Shown on Page 48
 Shown Colors are Tonal Match Only; Not Exact
 See Pages 50-51 for General Information.
 Due to laminated surface of these products art restrictions apply.
 Color and Foam consistency may vary within and from order to order.
 This is considered acceptable and within industry standards.

CF-FLAG4CP See Page 50-51 Regarding Dye Sublimation Art Acceptance & Specifications. Art Must be submitted ready to use on desired template.

Templates are located on our website:
www.americanzebra.com

ITEM	DESCRIPTION	100	250	500	1000	CODE	PKG	GDW	MIN QTY
CF-FLAG	CRAZY FRIO™ FLAG	\$.80	\$.80	\$.80	\$.80	4R	BULK	VARIABLES	100*

* for one color imprints

ITEM	DESCRIPTION	100	250	500	1000	CODE	PKG	GDW	MIN QTY
CF-FLAG4CP	CF-FLAG SUBLIMATION	\$ 1.20	\$ 1.20	\$ 1.20	\$ 1.20	4R	BULK	VARIABLES	100

CF-HAT • CF-HAT4CP



#CF-HAT CRAZY FRIO HAT

- Holds 12oz. Can
- Item Size: 4"H x 4"W
- Imprint Area: 1¾" x 3½" Side 1 (Under Hat), 3½" x 3½" Side 2, 1¾" Bottom
- 26 Stock Colors. Camo Tan & Camo Green add \$.15(V)
- 1/8" High Density, Cloth Laminated Open-Cell Foam
- Brush Tricot Lining

Option to incorporate your own Hat design.

Note: Item is NOT Pre-Printed.
Option to select material and imprint color. Shown design will be included with your submitted art and will print in the same ink color.



Screen/Set-Up Charge: \$50.00(V) per Color
Multi-Color Imprint: 250 Piece Minimum Required
Additional Color Charge: \$0.30(V) per Color
Assorted Colors within an Order: 50 per Color Minimum. \$3.00(Z) per color CF-HAT only.
Stock Foam Colors Shown on Page 48
 Shown Colors are Tonal Match Only; Not Exact
 See Pages 50-51 for General Information.
 Due to laminated surface of these products art restrictions apply.
 Color and Foam consistency may vary within and from order to order.
 This is considered acceptable and within industry standards.

CF-HAT4CP See Page 50-51 Regarding Dye Sublimation Art Acceptance & Specifications. Art Must be submitted ready to use on desired template. Templates are located on our website: www.americanzebra.com

#CF-HAT4CP

- Full Color, All-Over Imprint
- Your Graphics or Ours! See pg. 49 for Stock Colors and Backgrounds
- Screen/Set-up Charge: \$50.00(V)

ITEM	DESCRIPTION	100	250	500	1000	CODE	PKG	GDW	MIN QTY
CF-HAT	CRAZY FRIO™ HAT	\$.80	\$.80	\$.80	\$.80	4R	BULK	VARIABLES	100*

* for one color imprints

ITEM	DESCRIPTION	100	250	500	1000	CODE	PKG	GDW	MIN QTY
CF-HAT4CP	CF-HAT SUBLIMATION	\$ 1.20	\$ 1.20	\$ 1.20	\$ 1.20	4R	BULK	VARIABLES	100

#CF-BALL CRAZY FRIO BALL

- Holds 12oz. Can
- Item Size: 4”H x 4”W
- Imprint Area: 3½” x 3 ½” Sides, 1¾” Bottom
- 26 Stock Colors. Camo Tan & Camo Green add \$.15(V)
- 1/8” High Density, Cloth Laminated Open-Cell Foam
- Brush Tricot Lining

Round Top Shape allows you to incorporate your design.



Screen/Set-Up Charge: \$50.00(V) per Color
Multi-Color Imprint: 250 Piece Minimum Required
Additional Color Charge: \$0.30(V) per Color
Assorted Colors within an Order: 50 per Color Minimum. \$3.00(Z) per color CF-BALL only
Stock Foam Colors Shown on Page 48
 Shown Colors are Tonal Match Only; Not Exact
 See Pages 50-51 for General Information.
 Due to laminated surface of these products art restrictions apply.
 Color and Foam consistency may vary within and from order to order.
 This is considered acceptable and within industry standards.

CF-BALL4CP See Page 50-51 Regarding Dye Sublimation Art Acceptance & Specifications. Art Must be submitted ready to use on desired template. Templates are located on our website: www.americanzebra.com

#CF-BALL4CP

- Full Color, All-Over Imprint
- Your Graphics or Ours! See pg. 49 for Stock Colors and Backgrounds
- Screen/Set-up Charge: \$50.00(V)

ITEM	DESCRIPTION	100	250	500	1000	CODE	PKG	GDW	MIN QTY
CF-BALL	CRAZY FRIO™ BALL	\$.80	\$.80	\$.80	\$.80	4R	BULK	VARIABLES	100*

* for one color imprints

ITEM	DESCRIPTION	100	250	500	1000	CODE	PKG	GDW	MIN QTY
CF-BALL4CP	CF-BALLSUBLIMATION	\$ 1.20	\$ 1.20	\$ 1.20	\$ 1.20	4R	BULK	VARIABLES	100

CF-CRAW • CF-CRAW4CP

#CF-CRAW CRAWFISH FRIO

- Holds 12oz. Can
- Item Size: 4"H x 4"W
- Imprint Area: 3½" x 3½" Side 2, 1¾" Bottom
- 26 Stock Colors. Camo Tan & Camo Green add \$.15(V)
- 1/8" High Density, Cloth Laminated Open-Cell Foam
- Brush Tricot Lining

Option to incorporate your own Crawfish design.

#CF-CRAW4CP

- Full Color, All-Over Imprint
- Your Graphics or Ours! See pg. 49 for Stock Colors and Backgrounds
- Screen/Set-up Charge: \$50.00(V)



Note: Item is NOT Pre-Printed. Option to select material and imprint color. Shown design will be included with your submitted art and will print in the same ink color.



Screen/Set-Up Charge: \$50.00(V) per Color
Multi-Color Imprint: 250 Piece Minimum Required
Additional Color Charge: \$0.30(V) per Color
Assorted Colors within an Order: 50 per Color Minimum. \$3.00(Z) per color CF-CRAW only.
Stock Foam Colors Shown on Page 48
 Shown Colors are Tonal Match Only; Not Exact See Pages 50-51 for General Information.
 Due to laminated surface of these products art restrictions apply.
 Color and Foam consistency may vary within and from order to order.
 This is considered acceptable and within industry standards.

CF-CRAW4CP See Page 50-51 Regarding Dye Sublimation Art Acceptance & Specifications. Art Must be submitted ready to use on desired template.
 Templates are located on our website:
www.americanzebra.com

ITEM	DESCRIPTION	100	250	500	1000	CODE	PKG	GDW	MIN QTY
CF-CRAW	CRAZY FRIO™ CRAWFISH	\$.80	\$.80	\$.80	\$.80	4R	BULK	VARIES	100*

* for one color imprints

ITEM	DESCRIPTION	100	250	500	1000	CODE	PKG	GDW	MIN QTY
CF-CRAW4CP	CF-CRAW4SUBLIMATION	\$ 1.20	\$ 1.20	\$ 1.20	\$ 1.20	4R	BULK	VARIES	100

CF2-CRAW • CF2-CRAW4CP

#CF2-CRAW FRIO SOCK CRAWFISH

- Holds 12oz. Can
- Item Size: 4"H x 4"W
- Imprint Area: 3½" x 3 ½" Sides 1¾" Bottom
- 26 Stock Colors. Camo Tan & Camo Green add \$.15(V)
- 1/8" High Density, Cloth Laminated Open-Cell Foam
- Brush Tricot Lining



#CF2-CRAW4CP

- Full Color, All-Over Imprint
- Your Graphics or Ours! See pg. 49 for Stock Colors and Backgrounds
- Screen/Set-up Charge: \$50.00(V)



*shown with stock 4CP crawfish background

Screen/Set-Up Charge: \$50.00(V) per Color
Multi-Color Imprint: 250 Piece Minimum Required
Additional Color Charge: \$0.30(V) per Color
Assorted Colors within an Order: 50 per Color Minimum. \$3.00(Z) per color CF2-CRAW only.
 Shown Colors are Tonal Match Only; Not Exact See Pages 50-51 for General Information.
 Due to laminated surface of these products art restrictions apply.
 Color and Foam consistency may vary within and from order to order.
 This is considered acceptable and within industry standards.

CF2-CRAW4CP See Page 50-51 Regarding Dye Sublimation Art Acceptance & Specifications. Art Must be submitted ready to use on desired template.

Templates are located on our website:
www.americanzebra.com

ITEM	DESCRIPTION	100	250	500	1000	CODE	PKG	GDW	MIN QTY
CF2-CRAW	CRAZY FRIO 2 CRAWFISH	\$1.42	\$1.42	\$1.42	\$1.42	4R	BULK	VARIABLES	100*

* for one color imprints

ITEM	DESCRIPTION	100	250	500	1000	CODE	PKG	GDW	MIN QTY
CF2-CRAW4CP	CF2-CRAW SUBLIMATION	\$2.55	\$2.55	\$2.55	\$2.55	4R	BULK	VARIABLES	100

CF - CRAZY FRIO™



CF-PAW



CF-APPL



CF-PUMP



CF-DOUB



CF-HART



CF-PIN

Screen/Set-Up Charge: \$50.00(V) per Color
Multi-Color Imprint: 250 Piece Minimum Required
Additional Color Charge: \$0.30(V) per Color
Assorted Colors within an Order: 50 per Color Minimum.
 \$3.00(Z) per Color

Stock Foam Colors Shown on Page 48
 Shown Colors are Tonal Match Only; Not Exact
 See Pages 50-51 for General Information.
 Due to laminated surface of these products art restrictions apply.
 Color and Foam consistency may vary within and from order to order.
 This is considered acceptable and within industry standards.



CF-GRAD



CF-CLOV

Option to incorporate your own design into custom die-shape

Note: Item is NOT Pre-Printed.

Option to select material and imprint color. Shown design will be included with your submitted art and will print in the same ink color.

- Holds 12oz. Can
- Item Size: 4"H x 4"W
- Imprint Area: Varies Side 1, 3½" x 3½" Side 2, 1¼" Bottom
- 26 Stock Colors. Camo Tan & Camo Green add \$.15(V)
- 1/8" High Density, Cloth Laminated Open-Cell Foam
- Brush Tricot Lining

ITEM	DESCRIPTION	100	250	500	1000	CODE	PKG	GDW	MIN QTY
CF-CRAZY FRIO™	VARIOUS	\$.80	\$.80	\$.80	\$.80	4R	BULK	VARIES	100*

* for one color imprints

CF - CRAZY FRIO™



CF-BADG



CF-STAR



CF-HORS



CF-BOOT



CF-FISH



CF-HELM



CF-HOUS



CF-No1

Screen/Set-Up Charge: \$50.00(V) per Color
Multi-Color Imprint: 250 Piece Minimum Required
Additional Color Charge: \$0.30(V) per Color
Assorted Colors within an Order: 50 per Color Minimum.
 \$3.00(Z) per Color

Stock Foam Colors Shown on Page 48
 Shown Colors are Tonal Match Only; Not Exact
 See Pages 50-51 for General Information.
 Due to laminated surface of these products art restrictions apply.
 Color and Foam consistency may vary within and from order to order.
 This is considered acceptable and within industry standards.

- Holds 12oz. Can
- Item Size: 4"H x 4"W
- Imprint Area: Varies Side 1, 3½" x 3½" Side 2, 1¾" Bottom
- 26 Stock Colors. Camo Tan & Camo Green add \$.15(V)
- 1/8" High Density, Cloth Laminated Open-Cell Foam
- Brush Tricot Lining

Option to incorporate your own design into custom die-shape

Note: Item is NOT Pre-Printed.

Option to select material and imprint color. Shown design will be included with your submitted art and will print in the same ink color.

ITEM	DESCRIPTION	100	250	500	1000	CODE	PKG	GDW	MIN QTY
CF-CRAZY FRIO™	VARIOUS	\$.80	\$.80	\$.80	\$.80	4R	BULK	VARIES	100*

* for one color imprints



#COA CIRCLES OF ADVERTISING™

- Holds 12oz. Can
- Item Size: 4"H x 4"W
- Imprint Area: 3½" x 3 ½" Sides, 1¼" Bottom
- 26 Stock Colors. Camo Tan & Camo Green add \$.15(V)
- 1/8" High Density, Cloth Laminated Open-Cell Foam
- Brush Tricot Lining

Unique round die-cut shape allows you to incorporate your circular design.



Screen/Set-Up Charge: \$50.00(V) per Color
Multi-Color Imprint: 250 Piece Minimum Required
Additional Color Charge: \$0.30(V) per Color
Assorted Colors within an Order: 50 per Color Minimum. \$3.00(Z) per color COA only.
Stock Foam Colors Shown on Page 48
 Shown Colors are Tonal Match Only; Not Exact
 See Pages 50-51 for General Information.
 Due to laminated surface of these products art restrictions apply.
 Color and Foam consistency may vary within and from order to order.
 This is considered acceptable and within industry standards.

COA4CP See Page 50-51 Regarding Dye Sublimation Art Acceptance & Specifications. Art Must be submitted ready to use on desired template.
 Templates are located on our website:
www.americanzebra.com

#COA4CP

- Full Color, All-Over Imprint
- Your Graphics or Ours! See pg. 49 for Stock Colors and Backgrounds
- Screen/Set-up Charge: \$50.00(V)

ITEM	DESCRIPTION	100	250	500	1000	CODE	PKG	GDW	MIN QTY
COA	CIRCLES OF ADVERTISING™	\$.80	\$.80	\$.80	\$.80	4R	BULK	VARIABLES	100*

* for one color imprints

ITEM	DESCRIPTION	100	250	500	1000	CODE	PKG	GDW	MIN QTY
COA4CP	COA SUBLIMATION	\$ 1.20	\$ 1.20	\$ 1.20	\$ 1.20	4R	BULK	VARIABLES	100



CF2-JRY



CF2-DOC

#CF2 CRAZY FRIO



CF2-MUS

- Holds 12oz. Can
- Item Size: 4"H x 4"W
- Imprint Area:
3½" x 3 ½" Sides
1¼" Bottom

- 26 Stock Colors. Camo Tan & Camo Green add \$.15(V)
- 1/8" High Density, Cloth Laminated Open-Cell Foam
- Brush Tricot Lining



CF2-SRB

Option to incorporate your own design into custom die-shape

Note: Item is NOT Pre-Printed.
Option to select material and imprint color. Shown design will be included with your submitted art and will print in the same ink color.

Screen/Set-Up Charge: \$50.00(V) per Color
Multi-Color Imprint: 250 Piece Minimum Required, except #WBS
Additional Color Charge: \$0.30(V) per Color
Assorted Colors within an Order: 50 per Color Minimum. \$3.00 (Z) per color
Stock Foam Colors Shown on Page 48
 Shown Colors are Tonal Match Only; Not Exact

See Pages 50-51 for General Information.
 Due to laminated surface of these products art restrictions apply.
 Color and Foam consistency may vary within and from order to order.
 This is considered acceptable and within industry standards.

ITEM	DESCRIPTION	100	250	500	1000	CODE	PKG	GDW	MIN QTY
CF2-JRY	CRAZY FRIO 2 ARMS JERSEY	\$1.42	\$1.42	\$1.42	\$1.42	4R	BULK	VARIES	100*
CF2-MUS	CRAZY FRIO 2 ARMS MUSCLE	\$1.42	\$1.42	\$1.42	\$1.42	4R	BULK	VARIES	100*
CF2-DOC	CRAZY FRIO 2 ARMS DOCTOR	\$1.42	\$1.42	\$1.42	\$1.42	4R	BULK	VARIES	100*
CF2-SRB	CRAZY FRIO 2 ARMS SCRUBS	\$1.42	\$1.42	\$1.42	\$1.42	4R	BULK	VARIES	100*

#TPC16 16oz. THE PARTY CUP



- Double Wall Insulated Tri-Edge Recyclable Material
- Item Size: 5½”H x 3¾”W
- Imprint Area: 2½” x 3” Sides
- Stock Colors: See Cup Color Bar
- Sold/Assort in Increments of 100



The TPC16 also slides into our PGFSK! See page 16.

Red

#TPCLID THE PARTY CUP LID

- Available in White Only
- Sold Individually, \$.40(V) each



Cup Color Bar

Blue

White

Black

Green

Yellow

Navy

Purple

Neon Orange

Lime

Pink



Screen/Set-Up Charge: \$50.00(V) per Color - 1 Color Only. Multi-Color Imprint not available.

Assorted Colors within an Order: Per Case minimum.

Shown Colors are Tonal Match Only; Not Exact

See Pages 50-51 for General Information.

WASHING/CLEANING: Dishwasher use is NOT recommended on any plastic products. Avoid the use of commercial detergents and abrasive cleaners which can damage any imprint. Products are not intended for use in restaurant environment.

PRINTING DISTORTIONS: Due to the shape of some products, distortion may occur on some logos, designs and geometric shapes. This is considered acceptable and within industry standards.

ITEM	DESCRIPTION	100	500	1000	2500	CODE	PKG	GDW	MIN QTY
TPC16	16oz. PARTY CUP	\$1.97	\$1.97	\$1.97	\$1.97	4R	100	33#	100

Color Bar



Orange

Clear

Spring Green

Lime

Blue

Smoke

Red

#BT16 16oz. BOLERO™ TUMBLER

- Double Wall, Clarified Polypropylene Recyclable Material
- Item Size: 9¾”H x 3 5/8”W
- Imprint Area: 3” x 3” Sides
- Translucent Colors with Similar Lid & Straw. See Color Bar
- Sold/Assort in Increments of 60



Purple

All Products Made in



Screen/Set-Up Charge: \$50.00(V) per Color - 1 Color Only. Multi-Color Imprint not available.

Assorted Colors within an Order: Per Case minimum.

Shown Colors are Tonal Match Only; Not Exact

See Pages 50-51 for General Information.

WASHING/CLEANING: Dishwasher use is NOT recommended on any plastic products. Avoid the use of commercial detergents and abrasive cleaners which can damage any imprint. Products are not intended for use in restaurant environment.

PRINTING DISTORTIONS: Due to the shape of some products, distortion may occur on some logos, designs and geometric shapes. This is considered acceptable and within industry standards.

ITEM	DESCRIPTION	120	500	1000	2500	CODE	PKG	GDW	MIN QTY
BT16	16oz. BOLERO TUMBLER	\$1.69	\$1.69	\$1.69	\$1.69	4R	60	33#	120

12oz STADIUM CUP

#8112 12oz. STADIUM CUP



- Item Size: 4”H x 3”W
- Imprint Area: 2 5/8” x 2 3/4” Sides
- Stock Colors: White, Red, Blue, Yellow, Kelly Green, Clear



Screen/Set-Up Charge: \$50.00(V) per Color - 1 Color Only. Multi-Color Imprint not available.
Assorted Colors within an Order: 100 per Color Minimum - \$10.00(V) each.
Shown Colors are Tonal Match Only; Not Exact
 See Pages 50-51 for General Information.
WASHING/CLEANING: Dishwasher use is NOT recommended on any plastic products. Avoid the use of commercial detergents and abrasive cleaners which can damage any imprint. Products are not intended for use in restaurant environment.
PRINTING DISTORTIONS: Due to the shape of some products, distortion may occur on some logos, designs and geometric shapes. This is considered acceptable and within industry standards.

ITEM	DESCRIPTION	100	500	1000	2500	CODE	PKG	GDW	MIN QTY
8112	12oz. STADIUM CUP	\$.44	\$.44	\$.44	\$.44	4R	100	33#	100

Cup ColorBar



#8716 16oz. STADIUM CUP

- Item Size: 4 3/8"H x 3 1/2"W
- Imprint Area: 2 5/8" x 3 1/4" Sides
- Reusable Lid: Clear Only - \$.19(V)
- Stock Colors: See Cup Color Bar



All
Products
Made in



Screen/Set-Up Charge: \$50.00(V) per Color - 1 Color Only. Multi-Color Imprint not available.

Assorted Colors within an Order: 100 per Color Minimum - \$10.00(V) each.

Shown Colors are Tonal Match Only; Not Exact

See Pages 50-51 for General Information.

WASHING/CLEANING: Dishwasher use is NOT recommended on any plastic products. Avoid the use of commercial detergents and abrasive cleaners which can damage any imprint. Products are not intended for use in restaurant environment.

PRINTING DISTORTIONS: Due to the shape of some products, distortion may occur on some logos, designs and geometric shapes. This is considered acceptable and within industry standards.

ITEM	DESCRIPTION	100	500	1000	2500	CODE	PKG	GDW	MIN QTY
8716	16oz. STADIUM CUP	\$.45	\$.45	\$.45	\$.45	4R	100	37#	100

22oz STADIUM CUP

Cup ColorBar



#8722 22oz. STADIUM CUP

- Item Size: 5³/₄"H x 3 5/8"W
- Imprint Area: 3¹/₄" x 3 1/2" Sides
- Reusable Lid: Clear Only - \$.19(V)
- Stock Colors: See Cup Color Bar



All
Products
Made in



Screen/Set-Up Charge: \$50.00(V) per Color - 1 Color Only. Multi-Color Imprint not available.

Assorted Colors within an Order: 100 per Color Minimum - \$10.00(V) each.

Shown Colors are Tonal Match Only; Not Exact

See Pages 50-51 for General Information.

WASHING/CLEANING: Dishwasher use is NOT recommended on any plastic products. Avoid the use of commercial detergents and abrasive cleaners which can damage any imprint. Products are not intended for use in restaurant environment.

PRINTING DISTORTIONS: Due to the shape of some products, distortion may occur on some logos, designs and geometric shapes. This is considered acceptable and within industry standards.

ITEM	DESCRIPTION	100	500	1000	2500	CODE	PKG	GDW	MIN QTY
8722	22oz. STADIUM CUP	\$.50	\$.50	\$.50	\$.50	4R	100	37#	100

53mm Lid



#BSB20P 20oz. WHITE BOTTLE

- Item Size: 8"H x 2¾"W
- Imprint Area: 2 7/8" x 2 7/8" Sides

features **53mm** Push-Pull Lid
available in:

53mm Push-Pull Lid



63mm Lid



#BIK20FT 20oz. FROST TINT BOTTLE

- Item Size: 7¾"H x 2¾"W
- Imprint Area: 2 7/8" x 2 7/8" Sides

features **63mm** Push-Pull Lid
available in:

63mm Push-Pull Lid



Screen/Set-Up Charge: \$50.00(V) - 1 Color Only. Multi-Color Imprint Not Available.

Assorted Lid Colors within an Order: 100 per Color Minimum

Shown Colors are Tonal Match Only; Not Exact

See Pages 50-51 for General Information.

All Products are BPA Free & Lead Free; Complies with HR4040/CPSIA Requirements.

WASHING/CLEANING: Dishwasher use is NOT recommended on any plastic products. Avoid the use of commercial detergents and abrasive cleaners which can damage any imprint. Products are not intended for use in restaurant environment.

PRINTING DISTORTIONS: Due to the shape of some products, distortion may occur on some logos, designs and geometric shapes. This is considered acceptable and within industry standards.

All
Products
Made in



ITEM	DESCRIPTION	100	400	600	1000	CODE	PKG	GDW	MIN QTY
BSB20P	20oz. WHITE BOTTLE	\$.89	\$.89	\$.89	\$.89	4R	100	57#	100

ITEM	DESCRIPTION	100	400	600	1000	CODE	PKG	GDW	MIN QTY
BIK20FT	20oz. FROST TINT BOTTLE	\$.94	\$.94	\$.94	\$.94	4R	100	57#	100

63mm Lid ColorBar



#BIK20W 20oz. WHITE BOTTLE

- Item Size: 7¾”H x 2¾”W
- Imprint Area: 2 7/8” x 2 7/8” Sides
- 63mm Lid Colors: Select from Lid Color Bar

Solid White

Solid Black

Solid Red

Solid Kelly Green

Solid Blue

Trans Green

Trans Smoke

Trans Orange

Trans Purple

Trans Pink

Trans Blue

Trans Red

Trans Clear

#BIK24W 24oz. WHITE BOTTLE

- Item Size: 8¾”H x 2¾”W
- Imprint Area: 3¼” x 3” Sides
- 63mm Lid Colors: Select from Lid Color Bar



Screen/Set-Up Charge: \$50.00(V) - 1 Color Only. Multi-Color Imprint Not Available.

Assorted Lid Colors within an Order: 100 per Color Minimum

Shown Colors are Tonal Match Only; Not Exact

See Pages 50-51 for General Information.

All Products are BPA Free & Lead Free; Complies with HR4040/CPSIA Requirements.

WASHING/CLEANING: Dishwasher use is NOT recommended on any plastic products. Avoid the use of commercial detergents and abrasive cleaners which can damage any imprint. Products are not intended for use in restaurant environment.

PRINTING DISTORTIONS: Due to the shape of some products, distortion may occur on some logos, designs and geometric shapes. This is considered acceptable and within industry standards.

All Products Made in



ITEM	DESCRIPTION	100	400	600	1000	CODE	PKG	GDW	MIN QTY
BIK20W	20oz. WHITE BOTTLE	\$0.97	\$0.97	\$0.97	\$0.97	4R	100	57#	100

ITEM	DESCRIPTION	100	400	600	1000	CODE	PKG	GDW	MIN QTY
BIK24W	24oz. WHITE BOTTLE	\$1.05	\$1.05	\$1.05	\$1.05	4R	100	60#	100

#BIK20TR 20oz. TRANSLUCENT BOTTLE



Smoke

- Item Size: 7¾”H x 2¾”W
- Imprint Area: 2 7/8” x 2 7/8” Sides
- Translucent Bottle with Similar Translucent lid
- Sold/Assort in increments of 100



Green Clear Blue Red

- Item Size: 8¾”H x 2¾”W
- Imprint Area: 3¼” x 3” Sides
- Translucent Bottle with Similar Translucent lid
- Sold/Assort in increments of 100



Blue Green Purple Smoke Red

#BIK24TR 24oz. TRANSLUCENT BOTTLE



Clear

Screen/Set-Up Charge: \$50.00(V) - 1 Color Only. Multi-Color Imprint Not Available.

Assorted Colors within an Order: Per Case minimum.

Shown Colors are Tonal Match Only; Not Exact

See Pages 50-51 for General Information.

All Products are BPA Free & Lead Free; Complies with HR4040/CPSIA Requirements.

WASHING/CLEANING: Dishwasher use is NOT recommended on any plastic products. Avoid the use of commercial detergents and abrasive cleaners which can damage any imprint. Products are not intended for use in restaurant environment.

PRINTING DISTORTIONS: Due to the shape of some products, distortion may occur on some logos, designs and geometric shapes. This is considered acceptable and within industry standards.

All Products Made in 



ITEM	DESCRIPTION	100	400	600	1000	CODE	PKG	GDW	MIN QTY
BIK20TR	20oz. TRANSLUCENT BOTTLE	\$1.30	\$1.30	\$1.30	\$1.30	4R	100	57#	100

ITEM	DESCRIPTION	100	400	600	1000	CODE	PKG	GDW	MIN QTY
BIK24TR	24oz. TRANSLUCENT BOTTLE	\$1.37	\$1.37	\$1.37	\$1.37	4R	100	60#	100

MUGS and TUMBLERS



#3000 16oz. OMEGA™ MUG

- **Stock Colors:** White, Black, Red, Granite, Thunderbolt Blue, Harvest Green, Silver, Pink, Lime, Yellow
- Slider Lid: Black
- Item Size: 5¾"H x 5"W
- Imprint Area: 2 1/8" x 2 1/8" Sides
- **Sold in Increments of 48**



#3200 21oz. SPORTSTER™ MUG


- **Stock Colors:** White, Black, Granite, Thunderbolt Blue, Harvest Green, Silver, Metallic Red
- Slider Lid: Black
- Item Size: 7 3/8"H x 3½"W
- Imprint Area: 2 1/8" x 2" Sides
- **Sold in Increments of 48**



#3800 16oz. INFINITY TUMBLER™

- **Stock Colors:** White, Black, Granite, Thunderbolt Blue, Harvest Green, Silver, Metallic Red, Pink
- Drive-Thru Lid: Black - Substitute Slider Lid add \$.15(V)
- Item Size: 7 3/8"H x 3½"W
- Imprint Area: 2 1/8" x 2" Sides
- **Sold in Increments of 48**

Screen/Set-Up Charge: \$50.00(V) per Color
Additional Color Charge: \$.30(V) per Piece
Repeat Set-Up: \$40.00(V) per Color
Ink Change Charge: \$40.00(V)
PMS Match: \$50.00(V) per Color

All Products Made in 

Assorted Colors within an Order: 3-color max per case minimum
FOB-IN - Lead 10 business days from final response (conditional)
 See Pages 50-51 for General Information.
 Shown Colors are Tonal Match Only; Not Exact
Standard Imprint Colors (PMS#): Black, White, Cool Grey 10, Yellow 123, Orange 166, Red 186, Burgundy 202, Blue 286, Dark Green 343, Green 348, Purple 259, Teal 327, Brown 476, Metallic Gold 871, Silver 877.
WASHING/CLEANING: Dishwasher use is NOT recommended on any plastic products. Avoid the use of commercial detergents and abrasive cleaners which can damage any imprint. Products are not intended for use in restaurant environment.
PRINTING DISTORTIONS: Due to the shape of some products, distortion may occur on some logos, designs and geometric shapes. This is considered acceptable and within industry standards.



#3600 16oz. LOW RIDER MUG™

- **Stock Colors:** White, Black, Granite, Thunderbolt Blue, Harvest Green, Silver, Metallic Red, Lime, Magenta
- Slider Lid: Black
- Item Size: 4"H x 4"W
- Imprint Area: 1¼" x 2 7/8" Sides
- **Sold in Increments of 36**

ITEM	DESCRIPTION	144	288	576	1008	CODE	PKG	GDW	MIN QTY
3000	16oz. OMEGA MUG™	\$2.59	\$2.59	\$2.59	\$2.59	4R	48	46#	144
3200	21oz. SPORTSTER™ MUG	\$3.09	\$3.09	\$3.09	\$3.09	4R	48	45#	144
3600	16oz. LOW RIDER MUG™	\$3.35	\$3.35	\$3.35	\$3.35	4R	36	40#	144
3800	16oz. INFINITY TUMBLER™	\$2.53	\$2.53	\$2.53	\$2.53	4R	48	47#	144

22oz • 34oz THERMAL TRAVEL MUGS

#7522 22oz. THERMAL TRAVEL MUG



- Matte Exterior Finish
- Item Size: 6 7/8"H x 4 1/4"W
- Imprint Area: 4" x 2 5/8"
- Stock Mug Colors: Black, Harvest Green, Granite, White, Red, Purple, Thunderbolt Blue, Lime, Burnt Orange, Grey, Pink
- Stock Lid Colors: White, Black, Granite, Red, Thunderbolt Blue, Pearl White, Clear
- Sold in Increments of 24



#7534 34oz. THERMAL TRAVEL MUG

- Matte Exterior Finish
- Item Size: 7 3/4"H x 4 7/8"W
- Imprint Area: 4" x 3 1/2"
- Stock Mug Colors: Granite, White, Red, Thunderbolt Blue, Black
- Stock Lid Colors: White, Red, Thunderbolt Blue
- Sold in Increments of 24

ITEM	DESCRIPTION	144	288	576	1008	CODE	PKG	GDW	MIN QTY
7522	22oz. THERMAL TRAVEL MUG	\$3.84	\$3.84	\$3.84	\$3.84	4R	24	30#	144
7534	34oz. THERMAL TRAVEL MUG	\$4.23	\$4.23	\$4.23	\$4.23	4R	24	45#	144

Screen/Set-Up Charge: \$50.00(V) per Color

Additional Color Charge: \$.30(V) per Piece

Repeat Set-Up: \$40.00(V) per Color

Ink Change Charge: \$40.00(V)

PMS Match: \$50.00(V) per Color

Assorted Colors within an Order: 3-color max per case minimum

FOB-IN - Lead 10 business days from final response (conditional)

See Pages 50-51 for General Information.

Shown Colors are Tonal Match Only; Not Exact

Standard Imprint Colors (PMS#): Black, White, Cool Grey 10, Yellow 123, Orange 166, Red 186, Burgundy 202, Blue 286, Dark Green 343, Green 348, Purple 259, Teal 327, Brown 476, Metallic Gold 871, Silver 877.

WASHING/CLEANING: Dishwasher use is NOT recommended on any plastic products. Avoid the use of commercial detergents and abrasive cleaners which can damage any imprint. Products are not intended for use in restaurant environment.

PRINTING DISTORTIONS: Due to the shape of some products, distortion may occur on some logos, designs and geometric shapes. This is considered acceptable and within industry standards.

All
Products
Made in



MAGNETIC CLIPS



#MCAPPLE APPLE CLIP

- Item Size: 2¾"H x 2¾"W
- Imprint Area: 1¼" x 2"
- Stock Colors: Translucent Red & Green



#MCMAGNA COLOSSAL MAGNETIC CLIP

- Item Size: 2"H x 2"W
- Imprint Area: 1¼" x 1⅝"
- Stock Colors: Translucent Blue, Translucent Red, Solid White, Translucent Green, Translucent Purple



#MCHOUSE HOUSE MAGNETIC CLIP

- Item Size: 2"H x 2"W
- Imprint Area: 1⅝" x 1⅝"
- Stock Colors: Translucent Blue, Translucent Red, Translucent Smoke; Solid White, Translucent Green



#MCHEART HEART MAGNETIC CLIP

- Item Size: 2"H x 2"W
- Imprint Area: ¾" x 1⅝"
- Stock Colors: Translucent Red

Screen/Set-Up Charge: \$50.00(V) - 1 Color, 1 Side Imprint Only

Multi-Color Imprint: Not Available

Assorted Colors within an Order: 100 per Color Minimum - \$3.00(Z) per color

Standard Imprint Colors: Black, White, Red, Reflex Blue, Kelly Green, Orange, Yellow

Due to small listed imprinted areas, logo restrictions apply

See Pages 50 & 51 for General Information.

Shown Colors are Tonal Match Only; Not Exact

ITEM	DESCRIPTION	100	250	500	1000	CODE	PKG	GDW	MIN QTY
MCHOUSE	HOUSE MAGNETIC CLIP	\$1.15	\$1.15	\$1.15	\$1.15	4R	BULK	VARIABLES	100
MCMAGNA	COLOSSAL MAGNETIC CLIP	\$1.15	\$1.15	\$1.15	\$1.15	4R	BULK	VARIABLES	100
MCHEART	HEART MAGNETIC CLIP	\$1.15	\$1.15	\$1.15	\$1.15	4R	BULK	VARIABLES	100
MCAPPLE	APPLE MAGNETIC CLIP	\$1.15	\$1.15	\$1.15	\$1.15	4R	BULK	VARIABLES	100

CLIPS, TAPE MEASURE & SCHOOL ITEMS



#CC01 HOUSE CHIP CLIP

- Item Size: 2"H x 4"W
- Imprint Area Top: Within 1½" Square
- Imprint Area Bar: 1⅝" x 1¼"
- \$.30(V) plus Set-up for Second Location
- Stock Colors: Translucent Blue & Red, Solid White



#CC02 ROUND CHIP CLIP

- Item Size: 2"H x 4"W
- Imprint Area Top: Within 1½" Circle
- Imprint Area Bar: 1⅝" x 1¼"
- \$.30(V) plus Set-up for Second Location
- Stock Colors: Translucent Blue & Red, Solid White



- Item Size: 6¼"H x 9¼"W
- Imprint Area: 2¾" X 8"



#SPOUCH PLASTIC SCHOOL POUCH

- Stock Trim Colors: Blue, Red, White, Black, Yellow
- Pouch Color: Natural Frost



#TM01 10FT. TAPE MEASURE

- Item Size: 2"H x 2"W
- Imprint Area: 1¼" Diameter
- Stock Colors: Translucent Blue, Red, Green, Orange, Purple

Screen/Set-Up Charge: \$50.00(V) - 1 Color, 1 Side Imprint Only
Multi-Color Imprint: Not Available
Assorted Colors within an Order: 100 per Color Minimum - \$3.00(Z) per color
Standard Imprint Colors: Black, White, Red, Reflex Blue, Kelly Green, Orange, Yellow
 Due to small listed imprinted areas, logo restrictions apply
See Pages 50 & 51 for General Information.
 Shown Colors are Tonal Match Only; Not Exact

ITEM	DESCRIPTION	100	250	500	1000	CODE	PKG	GDW	MIN QTY
CC01	HOUSE CHIP CLIP	\$1.00	\$1.00	\$1.00	\$1.00	4R	BULK	VARIABLES	100
CC02	ROUND CHIP CLIP	\$1.00	\$1.00	\$1.00	\$1.00	4R	BULK	VARIABLES	100
TM01	TAPE MEASURE	\$1.19	\$1.19	\$1.19	\$1.19	4R	BULK	VARIABLES	100
SPOUCH	PLASTIC SCHOOL POUCH	\$0.84	\$0.84	\$0.84	\$0.84	4R	BULK	VARIABLES	100



#DA08 DESK ACCESSORY SET

- Material: Polystyrene (Cover) and Polypropylene (Bottom)
- Item Size: 2 1/2" H x 6" W – Contains: 6" Ruler, 10 Clips, and 4 Sticky Notes (Yellow, Green, Pink, & Blue)
- Imprint Area: 1 3/8" H x 4" W

Stock Colors: Blue, Red, White



#HB01 COMPACT MIRROR

- Material: Acrylonitrile Butadiene Styrene
- Item Size: 2 1/4" Diameter
- Imprint Area: Must fit within 1 3/8" Circle

Stock Colors: Blue, Red, White



#TL16 REFLECTOR SAFETY LED FLASHLIGHT w/ CLIP

- Reflector Safety LED flashlight with Clip -3 modes Strobe, Blinking, Solid Light
- Material: Polystyrene (body), Polypropylene (clip)
- Approximate Item Size: 1 1/2" H x 2 3/4" W
- Imprint Area: 7/8" H X 2" H

Stock Colors: Blue, Green, Red, Yellow, Clear

Screen/Set-Up Charge: \$50.00(V) - 1 Color, 1 Side Imprint Only
Multi-Color Imprint: Not Available
Assorted Colors within an Order: 100 per Color Minimum - \$3.00(Z) per color
Standard Imprint Colors: Black, White, Red, Reflex Blue, Kelly Green, Orange, Yellow
 Due to small listed imprinted areas, logo restrictions apply
See Pages 50 & 51 for General Information.
 Shown Colors are Tonal Match Only; Not Exact

ITEM	DESCRIPTION	100	250	500	1000	CODE	PKG	GDW	MIN QTY
DA08	DESK ACCESSORY SET	\$1.29	\$1.29	\$1.29	\$1.29	4R	BULK	VARIES	100
HB01	COMPACT MIRROR	\$.88	\$.88	\$.88	\$.88	4R	BULK	VARIES	100
TL16	REFLECTOR SAFETY LED FLASHLIGHT	\$1.69	\$1.69	\$1.69	\$1.69	4R	BULK	VARIES	100

FRISBEES • FLYING DISCS

#FND001 10" DIAMETER FOLDABLE FLYER w/ POUCH



- Stock Solid Colors: Red, Blue, Yellow, White, Purple, Green
- Imprint Area: Must Fit within 7½" Diameter
- Pouch Imprint: \$.30(V) + Screen Charge: \$50.00(V)
- Pouch Size: 4½" H x 3½"W Square
- Pouch Imprint Size: 2¼" x 2½"
- Sold/Assorted in Increments of 150
- ASSEMBLY NOT OFFERED
- Screen/Set-up Charge: \$50.00(V) 1-Color, 1 side only
- Multi-Color Imprint Not Available
- See Page 50-51 General Information
- Shown Colors are Tonal Match Only; Not Exact

Standard Imprint Colors: Black, White, Red, Reflex Blue, Kelly Green, Orange, Yellow
Due to the small listed imprinted areas, logo restrictions apply.

#ZZF 9½" DIAMETER FLYER

- Stock Solid Colors: Red, Blue, Yellow, Black, White, Purple, Green
 - Stock Translucent Colors: Red, Blue, Green, Purple
 - Stock Neon Colors: Pink, Orange, Lime
 - Imprint Area: Must Fit within 5" Diameter
 - Screen/Set-up: \$50.00(V) 1-Color, 1 Side Only
 - Multi-Color Imprint Not Available
 - Sold/Assorted in Increments of 100
- See pages 50-51 for General Information
Shown Colors are Tonal Match Only; Not Exact



Screen/Set-Up Charge: \$50.00(V) per Color
Multi-Color Imprint: 250 Piece Minimum Required
Assorted Colors within an Order: 100 per Color Minimum - \$3.00(Z) per color
 See Pages 50 & 51 for General Information.
 Shown Colors are Tonal Match Only; Not Exact

ITEM	DESCRIPTION	100	250	500	1000	CODE	PKG	GDW	MIN QTY
FND001	FLYING DISC w/ POUCH	\$1.09	\$1.09	\$1.09	\$1.09	4R	BULK	VARIES	100

ITEM	DESCRIPTION	100	250	500	1000	CODE	PKG	GDW	MIN QTY
ZZF	9½" DIAMETER FLYER	\$.93	\$.93	\$.93	\$.93	4R	100	30#	100

#12P 12oz. WHITE PAPER CUP



- Imprint Area: 2¾" x 3"
- 1 Side Only

#16P 16oz. WHITE PAPER CUP



- Imprint Area: 3" x 3"
- 1 Side Only



Lid Sold Separately
White Cappuccino Lid
for Paper Cups
#CAPP



#CW also fits our 16PC.
See page 9.

Screen/Set-up Charge: \$50.00(V) 1 Color, Multi-Color Imprint not available

Standard imprint colors: Black, Metallic Gold, Metallic Silver, White, Red, Reflex Blue, Kelly Green, Orange, Yellow

See Page 51-52 for General Information

Due to the listed shown imprint areas, logo restrictions apply. Call Factory for guidelines.

ITEM	DESCRIPTION	100	400	700	1000	CODE	PKG	GDW	MIN QTY
12P	12oz. PAPER CUP	\$.70	\$.70	\$.70	\$.70	4R	BULK	VARIES	100
16P	16oz. PAPER CUP	\$.75	\$.75	\$.75	\$.75	4R	BULK	VARIES	100
CAPP	CAPPUCCINO LID	\$.15	\$.15	\$.15	\$.15	4R	BULK	VARIES	100

**#9PC 9oz. CLEAR PLASTIC
“FLEXIBLE” COLD CUP**



- Imprint Area: 1¼” x 2½”
- 1 Side Only

**#16PC 16oz. CLEAR PLASTIC
“FLEXIBLE” COLD CUP**



- Imprint Area: 1¾” x 3”



**#12PC 12oz. CLEAR
PLASTIC “FLEXIBLE”
COLD CUP**

- Imprint Area: 1 7/8” x 2¾”

Clear Lids Available
for all Clear Plastic
“Flexible” Cold Cups

Screen/Set-up Charge: \$50.00(V) 1 Color, Multi-Color Imprint not available
Standard imprint colors: Black, Metallic Gold, Metallic Silver, White, Red, Reflex Blue, Kelly Green, Orange, Yellow
 See Page 51-52 for General Information
 Due to the listed shown imprint areas, logo restrictions apply. Call Factory for guidelines.

ITEM	DESCRIPTION	100	400	700	1000	CODE	PKG	GDW	MIN QTY
9PC	9oz. FLEXIBLE COLD CUP	\$.39	\$.39	\$.39	\$.39	4R	BULK	VARIES	100
12PC	12oz. FLEXIBLE COLD CUP	\$.41	\$.41	\$.41	\$.41	4R	BULK	VARIES	100
16PC	16oz. FLEXIBLE COLD CUP	\$.48	\$.48	\$.48	\$.48	4R	BULK	VARIES	100

FOAM CUPS 12 • 14 • 16



#FC12 12oz

1 Color Imprint
Imprint Area:
2 3/4" x 3"



#FC14 14oz

1 Color Imprint
Imprint Area:
2 3/4" x 3"



#FC16 16oz

1 Color Imprint
Imprint Area:
3 3/8" x 3 3/8"



Screen Charge: \$50.00(V) 1 Color, 1 or 2 Side Imprint
Standard imprint colors: Black, White, Red, Reflex Blue, Kelly Green, Orange, Yellow
 See Page 51-52 for General Information
 Due to the listed shown imprint areas, logo restrictions apply. Call Factory for guidelines.

ITEM	DESCRIPTION	100	500	1000	2500	CODE	PKG	GDW	MIN QTY
FC12	12oz. FOAM CUP	\$.34	\$.34	\$.34	\$.34	4R	BULK	VARIABLES	100
FC14	14oz. FOAM CUP	\$.36	\$.36	\$.36	\$.36	4R	BULK	VARIABLES	100
FC16	16oz. FOAM CUP	\$.38	\$.38	\$.38	\$.38	4R	BULK	VARIABLES	100

20 • 24 • 32 FOAM CUPS



#FC20 20oz

1 Color Imprint
Imprint Area:
3½" x 3½"



#FC24 24oz

1 Color Imprint
Imprint Area:
4" x 3½"



#FC32 32oz

1 Color Imprint
Imprint Area:
4" x 4"

Screen Charge: \$50.00(V) 1 Color, 1 or 2 Side Imprint
Standard imprint colors: Black, White, Red, Reflex Blue, Kelly Green, Orange, Yellow
See Page 51-52 for General Information
Due to the listed shown imprint areas, logo restrictions apply. Call Factory for guidelines.

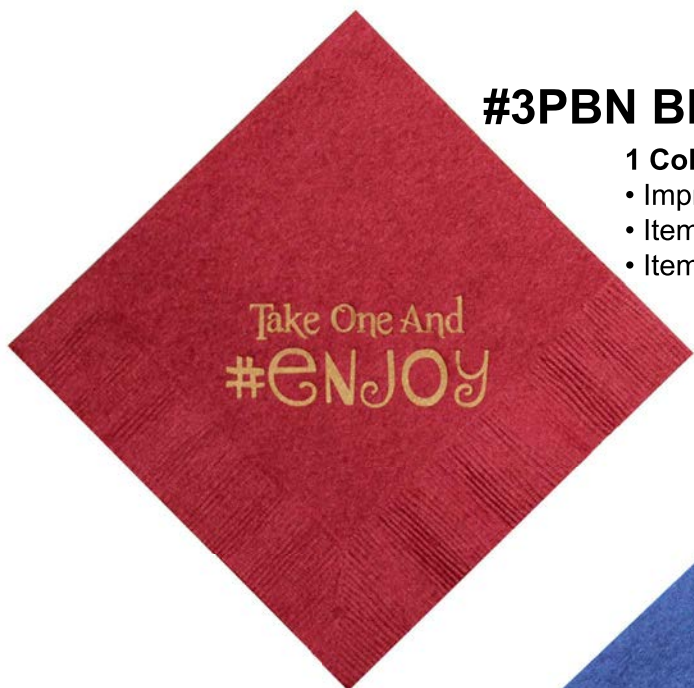


ITEM	DESCRIPTION	100	500	1000	2500	CODE	PKG	GDW	MIN QTY
FC20	20oz. FOAM CUP	\$.44	\$.44	\$.44	\$.44	4R	BULK	VARIES	100
FC24	24oz. FOAM CUP	\$.47	\$.47	\$.47	\$.47	4R	BULK	VARIES	100
FC32	32oz. FOAM CUP	\$.49	\$.49	\$.49	\$.49	4R	BULK	VARIES	100

#3PBN BEVERAGE NAPKINS

1 Color Imprint

- Imprint Area: 2½" x 2½"
- Item Size: 4¾" x 4¾" Folded
- Item Colors: See Napkin Color Bar



White

Black

Silver

Ivory

Red

Magenta

Cobalt Blue

Burgundy

#3PLN DINNER NAPKINS

1 Color Imprint

- Imprint Area: 3" x 3"
- Item Size: 6½" x 6½" Folded
- Item Colors: See Napkin Color Bar

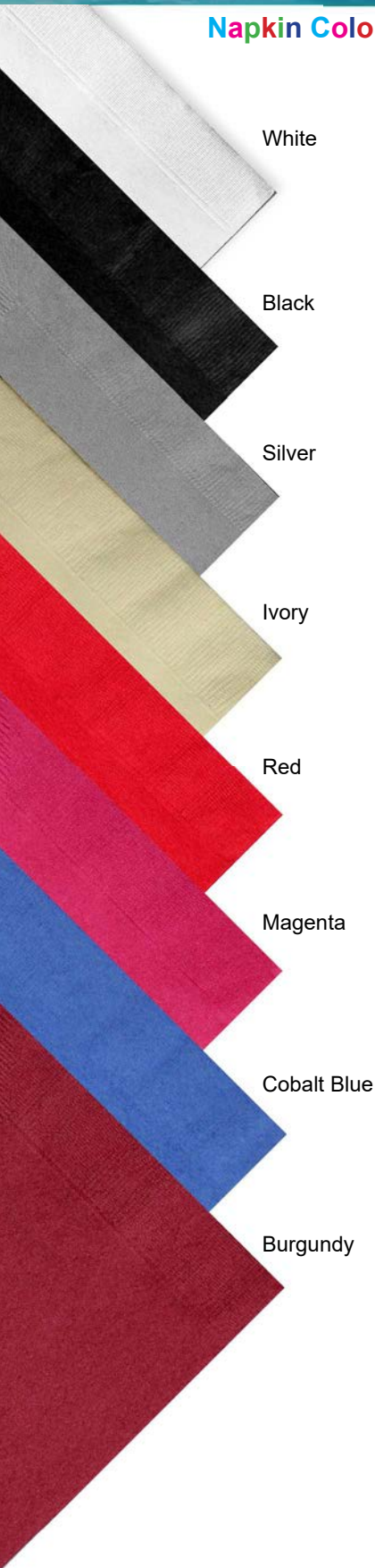
Plate Charge: \$50.00(V) 1 Color, 1 Side Imprint Only
Standard imprint colors for napkins:
 Black, Silver, Ivory, Red, Magenta, Cobalt, Burgundy

See Page 51-52 for General Information
 Due to the listed shown imprint areas, logo restrictions apply. Call Factory for guidelines. Shown Colors are Tonal Match Only; Not Exact

ITEM	DESCRIPTION	100	400	700	1000	CODE	PKG	GDW	MIN QTY
3PBN	BEVERAGE NAPKIN	\$.53	\$.53	\$.53	\$.53	4R	BULK	VARIABLES	100
3PLN	LUNCH NAPKIN	\$.56	\$.56	\$.56	\$.56	4R	BULK	VARIABLES	100

DINNER NAPKINS • GUEST TOWEL

Napkin Color Bar



White

Black

Silver

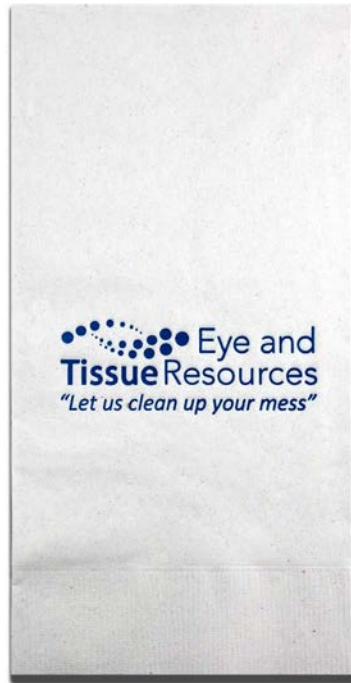
Ivory

Red

Magenta

Cobalt Blue

Burgundy



#2PDN DINNER NAPKINS

1 Color Imprint

- Imprint Area: 3" x 3 "
- Item Size: 8½"H x 4½"W Rectangle
- Item Colors: See Napkin Color Bar

#5SGT WHITE GUEST TOWEL

1 Color Imprint

- Imprint Area: 3" x 3 "
- Item Size: 8"H x 4"W Rectangle
- Item Color: White Only

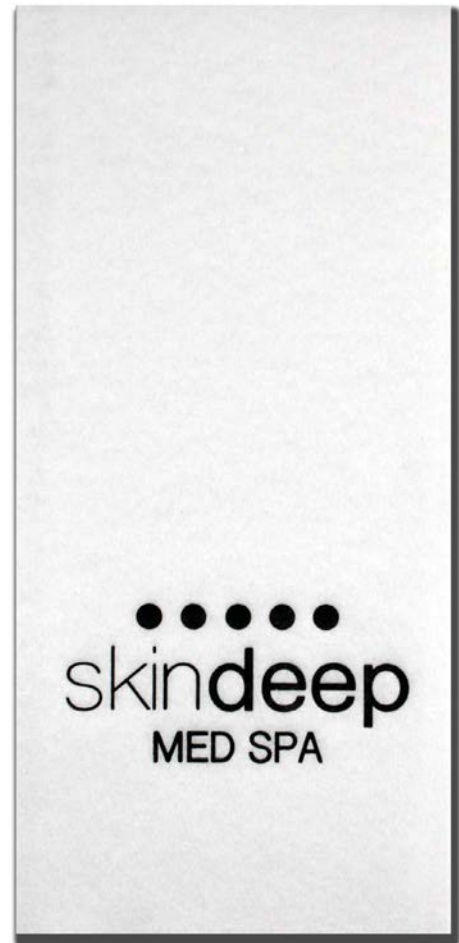


Plate Charge: \$50.00(V) 1 Color, 1 Side Imprint Only
Standard imprint colors for napkins:
 Black, Silver, Ivory, Red, Magenta, Cobalt, Burgundy

See Page 51-52 for General Information
Due to the listed shown imprint areas, logo restrictions apply. Call Factory for guidelines. Shown Colors are Tonal Match Only; Not Exact

ITEM	DESCRIPTION	100	400	700	1000	CODE	PKG	GDW	MIN QTY
2PDN	DINNER NAPKIN	\$.62	\$.62	\$.62	\$.62	4R	BULK	VARIABLES	100
5SGT	GUEST TOWEL	\$.65	\$.65	\$.65	\$.65	4R	BULK	VARIABLES	100

AMERICAN ZEBRA LINE

FABRICS

Images of actual fabric samples used.

Listed PMS Colors are close tonal match, NOT EXACT.



26 Available Scuba Foam Colors



Fabric colors as well as thickness consistency may vary with the order AND from order to order. This is acceptable and within industry standards

43 Available Neoprene Colors





Images of actual dye sublimated fabric used.

Listed PMS colors are keyed into digital file yet hue may vary.

Solid Colors

 NAVY PMS 2768c	 COBALT PMS 286c	 TEAL PMS 314c	 ROYAL PMS 285c	 NEON BLUE PMS 640u	 SKY BLUE PMS 278c	 TURQUOISE PMS 323c	 AQUA PMS 319u	 PISTACHIO PMS 578u
 LIME PMS 359u	 K. GREEN PMS 2257c	 F. GREEN PMS 555c	 DK. BROWN PMS 476c	 LT. BROWN PMS 1615c	 B. ORANGE PMS 160u	 TANGERINE PMS 2020c	 ORANGE PMS 165c	 YELLOW PMS 3945c
 LT. PINK PMS 196c	 PINK PMS 2037u	 HOT PINK PMS 806c	 RED PMS 186c	 CRIMSON PMS 7627c	 MAGENTA PMS 227c	 MAROON PMS 504c	 BURGUNDY PMS 2056c	 PURPLE PMS 2613c
 COSMOS	 LAVENDER PMS 2635u	 ASH PMS 432c	 BLACK	 GREY PMS Cool Grey C	 LT. GREY PMS 422c	 KHAKI PMS 7500u	 LEOPARD	

Full-Coverage Patterns

 B. BANDANA	 R. BANDANA	 DENIM	 TYE-DYE	 SNAKE	 GRASS	 WOOD	 MEX BLANKET	 COW
 ZEBRA	 RED ZEBRA	 PINK ZEBRA	 BLUE ZEBRA	 PURPLE ZEBRA	 RED CHEETAH	 PURPLE CHEETAH	 BLUE CHEETAH	 CHEETAH
 ORANGE CAMO	 BLUE CAMO	 PINK CAMO	 GREEN CAMO	 BROWN CAMO	 BLUE DIGI CAMO	 GREY DIGI CAMO	 BROWN DIGI CAMO	 GREEN DIGI CAMO

2020 GENERAL INFORMATION

ORDER SUBMITTAL:

- Include Purchase order number in subject line.
- Email order and art together to sales@americanzebra.net
- If you do not get a reply confirming receipt of your email or fax within 24 business hours please call Factory. AZL will not be responsible for electronic or fax transmittal failure.

COMPLETE ORDERS MUST INCLUDE THE FOLLOWING:

- PO number, In-hand date, Contact name, Billing address, Phone number, Fax Number, Email address, Ship to address indicating commercial or residential, Ship Method -Ground or Air service, Item number, Item color, Quantity, Imprint color with PMS number for reference only.
- Exact repeat (art and Item), Orders must include previous purchase order number and a faxed copy of art.

LEAD TIME:

- Call factory for specifics. Rush service is based upon product availability and current production schedule.

QUOTES:

- No quotes will be honored unless in writing. Factory is not responsible for errors on verbal quote when written confirmation is not received prior to production. Please submit written quote along with order.

SCREEN/SETUP CHARGE:

FOB-TX ONLY:

- New order \$50.00(V) per color
- Repeat order (exact art and Item). - No repeat screen/setup fee if order is placed within 12 months of invoice date (1 year). Over 1 year will incur a Repeat screen charge of \$30.00(V) per color. Orders over 2-year will be considered new and will require new art submittal, new screen charge \$50.00(V) per color
- FOB-IN: New orders \$50.00(V) per color, Repeat orders \$40.00(V) per color

ART REQUIREMENTS:

- We are PC based. Art can be submitted via email to sales@americanzebra.net - Be sure to submit a hard copy of your art in conjunction with the order.
- We do not accept Microsoft Office, Bitmaps, JPEGs, GIFs, PNGs or TIFs for screen-printing.
- Halftones are not possible on screen-printing. Factory will accept halftone use only at 100% imprint size.
- Factory does not archive email art
- AZL reserves the right to determine what constitutes acceptable art.
- Artwork will be sized to maximum imprint unless otherwise specified on purchase order.
- All art recreations are outsourced. Typesetting is offered at \$20.00(V) which includes 4 normal lines of type. Add \$8.00(V) per additional line. Changes after first proof will incur an additional \$10.00(Z) per change charge.

ART ACCEPTANCE FOR SCREEN PRINTING:

- Please submit art in a VECTOR format. **Adobe Illustrator:** It must be a true Illustrator file (created in Illustrator, not imported). Please convert all text to outlines. **Corel Draw:** It must be a true Corel Draw file (created in CorelDraw, not imported). Please convert all text to curves. Files must be in PDF, EPS, AI, CDR or SVG file format with layers that can be broken down.

DYE SUBLIMATION ART ACCEPTANCE & SPECIFICATIONS.

- Photoshop, Illustrator, Corel Draw, and PDF - All files must be editable. PSD, JPEG, GIF, PNG, and TIF acceptable ONLY IF art is sized to print size or larger at 300dpi (dots per inch).
- Art must be submitted Ready to use on desired Template. Flattened art with template lines all embedded in a single layer will not be accepted.
- Templates are located on our website <http://www.americanzebra.com/>
- Double Click on: General Info tab > Click on the word **here** > Download desired template
- To ensure full edge to edge bleed, utilized the entire shaded area of the template. Artwork must have a minimum resolution of 300dpi and all text must be converted to small objects. For best color results, RGB is preferred, but CMYK is acceptable. Artwork must be to exact, shaded area size. Maximum imprint area includes full color bleed edge to edge. When inserting verbiage, do not set type beyond 'sew lines. This process can result in 100-400% dot gain. Therefore, small knockout or reverse text should be eliminated or set in bold.
- Submitted art is not altered, but rather handled to fit exactly within our print-ready templates, and is sent directly to our color-calibrated Sublimation printers. The file is converted to the RGB color profile for optimum brightness and contrast, and any Process (CMYK) Black within the file is converted to Rich (RGB) Black for maximum blackness. All other colors within the submitted file are considered proprietary and are therefore maintained. We never alter or change opacity, saturation, hue or color balance.
- If color matches are critical we suggest you approve a PMS Color Match which is offered at \$50.00(V) per color. However, due to all the variables associated with Dye Sublimation, exact color replicating or exact PMS Match may not be achieved. Depending on the size of the order, colors may vary within a run and on Repeat orders.

- Due to the display brightness and variance in color resolution for each computer monitor, the printed product will vary from the color seen in the digital proof and virtual layout sample. Colors will also vary from a printed paper proof.

- True Fabric Black cannot be achieved on Sublimation prints; RGB (Rich) Black only (#000000). The Sublimation process can result in a 100-400% dot gain and therefore small, reverse, or knock-out text will not be as legible as larger fonts. During the heat process, the Sublimated ink becomes a gas and diffuses a small amount before being absorbed by the fabric. Consequently, prints may not be razor-sharp.

- Scuba Foam Sublimation vs. Neoprene Sublimation: Due to the consistency of the material, Sublimation prints on Scuba foam will be brighter and sharper on open-cell Scuba foam vs. closed-cell Neoprene. If this is critical, a Pre-Production Proof is suggested., Pre-Production proofs are offered for \$50.00(V) PLUS Set-up charge of \$50.00(V) Each.

ART PROOF:

- AZL emails black & white art layout proof for every order unless you make specific arrangements to the contrary. Waive Proof - Require either an email JPG or a faxed hard copy of the art so that we may compare with submitted Vector file.
- Tonal color proofs are available at \$10.00(Z).
- Verbal approvals are not accepted.
- Orders will not go into production until approval is received. Your signature is considered acceptance of artwork. AZL is not responsible for incorrect art after approval is received. Delay in approval will result in production delay.

CHANGES TO ART:

- Distributor is responsible for confirming that changes were received by factory.
- All changes must be re-submitted as revised art.
- Any changes made after a proof has been sent will incur a \$10.00(Z) charge.
- Screen Charge of \$50.00(V) will apply to all corrections received after art layout has been approved.
- Corrections are not possible on completed orders.

MULTI-COLOR/FOAM ITEMS

- Submission of art to sales@americanzebra.net is required to ensure registration will be possible.
- \$30(V) per each additional color (if applicable). -
- AZL reserves the right to refuse orders if considers impossible to print within our standard registration quality. Please allow ¼" in movement in any direction.

WASHING OF MUGS, CUPS AND BOTTLES:

- Do not put imprinted plastic cups or bottles in the dishwasher.
- Hand wash only with mild, liquid detergent soap. For best imprint life, avoid the use of commercial detergents or abrasive cleansers which will damage the imprint and scratch the surface.
- Products are not for use in the restaurant environment.

ASSEMBLY:

- If applicable. Call factory for specifics.
- \$0.15(V) per unit includes poly-bag.
- \$5.00(Z) per case/special package.
- \$1.00(Z) per bundle/plastic bag.

ASSORT COLORS:

- \$3.00(Z) per color. 50 piece minimum per color Scuba/Neoprene (Excludes FSK & EFSK).
- \$10.00(V)per color. 100 piece minimum per color stadium cups. All other will be accepted in case increments only (See catalog for specifics).

BLANK ITEMS:

- Call factory for stock availability and lead time.
- A \$50.00(Z) minimum is required on all blank orders. Orders will be accepted in case increments only.
- No Returns on any blank items are allowed
- Price listed in catalog subject to stock availability

PUFF ADDITIVE:

- AZL reserves the right to determine the amount of puff additive depending on the ink color and art detail. (black ink does not allow puff additive). Call factory for specifics.

DISTRIBUTOR SELF-PROMOTION:

- Limited Items Call factory for specifics.
- First column minimum; End Quantity Pricing less 10%.
- Screen charge \$30.00(V) per color.
- Imprint copy can only contain the distributor's name and applicable company information as shown on submitted purchase order. Otherwise, order will not be considered a Self-Promotion.

CATALOGS:

- Full line catalog and all year promotional brochures are available to download at americanzebra.com
- Up to 3-actual copies of our All Year Promotional brochures, can be mailed at no charge. Additional copies will require your UPS or Fed-EX shipper number (We do not ship using any other method). Request can be submitted via email to sales@americanzebra.net

2020 GENERAL INFORMATION

SAMPLE REQUEST:

- Accepted via fax or email only.
- Depending on requested sample, up to three (3) samples may be available at no charge with your provided shipper number.
- We do not ship using any other method than UPS or FED-EX.
- If available, samples are shipped within 24-48 hours.

CHANGES OR CANCELLATIONS:

- Call factory for status of order, partial/completed orders cannot be cancelled or changed. All changes must be submitted in writing via email. Distributor is responsible for confirming that changes were received by factory.
- All fabric items are cut, printed and sewn to your specification. All plastic items are ordered or pulled, flamed and staged for your order. A 20% fee will be assessed and billed along with any applicable charges. NO EXCEPTIONS.

PMS MATCH:

- We do not offer PMS Match. We do ask you provide a PMS number for reference only. This is required so that we may get as close as possible to the provided PMS number. However; only near tonal values can be achieved and will vary from original and repeat orders.
- If a color match is critical, we suggest a pre-production proof at \$50.00(V) plus applicable screen charges.
- AZL assumes no responsibility for incorrect tonal colors.
- PMS Match is offered on our Dye-Sublimation and FOB-IN orders only at \$50.00(V) per color.

INK CHANGE:

- \$20.00(V) per change during a run.

FREIGHT QUOTES:

- Accepted via email only. Quotes are estimates only and are not guaranteed.

HANDLING/SERVICE FEE:

- A \$3.00(Z) charge per carton will apply to all packages.
- A \$14.95(Z) per pallet charge will apply to all motor freight shipments

CUMULATIVE PRICING:

- Quantity pricing on various sizes and items not available.

PRE-PRODUCTION PROOF:

- Actual pre-production proofs are available for \$50.00(V) each plus applicable screens (includes 1-3 pieces). Pre-Production Proofs are recommended prior to producing orders.

LESS THAN MINIMUM:

- Call factory for specific quantities on items. All mugs must be ordered and shipped in case increments. Some products are not available in less than minimum quantities. Orders that qualify will incur a \$50.00(V) LTM charge.

OVERRUNS/UNDER:

- Orders are generally shipped in exact quantities. Due to the nature of the decoration process, orders may ship 5% under and will be considered complete.
- Exact Quantity Charge, \$10.00(Z).
- Distributor requested overruns will be charged accordingly. However, overruns are not guaranteed.

MERCHANDISE RETURNS:

- Items printed incorrectly due to factory error will be replaced at no charge when returned within 5 days of receipt.
- Any discrepancies must be acknowledged in writing within 5 days of receipt of goods.
- AZL must authorize all returns. Product returned without authorization will be refused and returned to sender. Merchandise must be available to be returned for any credit or replacement.
- We do not accept returns for incorrect product color and/or size ordered.
- Distributors are encouraged to advise customers to review all products upon receipt of shipments.
- No determination on claims will be made until all circumstances are reviewed (samples will be required).
- No deduction is allowed on an invoice for any reason without prior approval in writing from AZL. Credit memos will be issued from the Factory.

COPYRIGHT/TRADEMARK:

- AZL assumes artwork submitted is in full compliance with all laws concerning copyright, trademarks, etc. Purchasers, by placing these orders, agree to hold AZL harmless for any damages, cost, and/or expenses arising under from violation of these laws resulting from AZL's use of supplied artwork.

DISCLAIMER:

- Emailed or Faxed orders are considered original orders. Acceptance of purchase order constitutes an agreement based solely on terms and conditions as specified by AZL.
- Distributor is responsible for any duplication of orders if sent multiple time.
- Logos used in AZL catalog do not constitute an endorsement of AZL products. These products are not offered for sale with any organization's logo without their express authorization and permission.

SHIPPING:

- The factory has no control of delivery after the order has been transferred to the shipper. The factory does not guarantee arrival. If product is shipped per schedule and arrives late due to shipper error, you are still required to pay for the order, less any refunds received from the shipper.
- Unless a specific ship method is provided. Your order will ship Ground service.
- We ship UPS and FED-EX only. To guarantee a specific carrier, a shipper number must be provided a \$3.00(Z) handling/service fee will apply per case.
- Submitted orders must note Commercial or Residential delivery. Residential delivery is subject to additional service charges applicable by carrier.
- Both UPS and FED-EX utilize dimensional weight and cubic densities.
- Shipping weights listed in catalog are estimates only; real weights may vary.
- International shipments must include appropriate documentation, brokerage along with UPS shipper number. AZL is not responsible for any Duties, Tariffs or any other export fees.
- Claims for damages, shortages, etc. must be placed with the carrier. Please retain original cartons and contents for inspection.

DROP SHIP:

- \$10.00(Z) per additional location(s) plus \$3.00(Z) Handling fee per case.
- Drop ship list including typed addresses and appropriate case quantities must accompany original purchase order.
- All drop shipments must be case increments. If drop ship is required with a non-case increment, an additional charge of \$5.00(Z) per case will apply.
- Changes cannot be made after order has been printed and boxed.
- Storage/warehouse options are not offered.

TERMS:

- Complete, signed credit application must be submitted to be considered for open terms. We reserve the right to revoke open credit at any time.
- Full payment is required on new customer prior to processing order, unless other terms are established.
- Our customary accepted method of payment is Company check. If you elect to use DISCOVER, VISA OR MASTERCARD, our maximum order amount (including freight) is \$1500.00. We do not accept verbal credit card authorization.
- Invoice aging begins at invoice date. A 3% Finance charge will be applied to all outstanding balances over 30 days.
- Orders received from customer with past due invoice(s) will be held and not processed until all payments are current.
- All customers outside the continental United States must send payment in the form of a Cashier's Check or Money Order. All Payments must be made in U.S. currency.

RETURNED CHECKS:

- A \$25.00(Z) charge will be assessed for all returned checks. Accepted methods of replacement payment are Credit Card or Money Order only. Open credit terms will be automatically terminated.

TEXAS DISTRIBUTORS:

- Texas customers must furnish signed Texas Resale Certificate form before any orders can be processed.

PROP 65:

- American Zebra Line decorates product using imprint methods that comply with the U.S. FDA guidelines for heavy metal release standards.
- A \$.05(Z) charge per item will apply to attach customer supplied proper 65 warning label.
- It is the responsibility of the Distributor to clearly notify the Factory in writing on their Purchase Order the product must be Prop 65 labeled.
- Both the Distributor and the end-user will hold The Factory harmless from any and all liability including but not limited to all costs associated with defending any legal claims due to Prop 65 violations.
- The Factory has the right to refuse any order where the Distributor or end-user, knowing that the order is shipping to or being distributed in the state of California, requests that the product be shipped without Prop 65 warning labels.

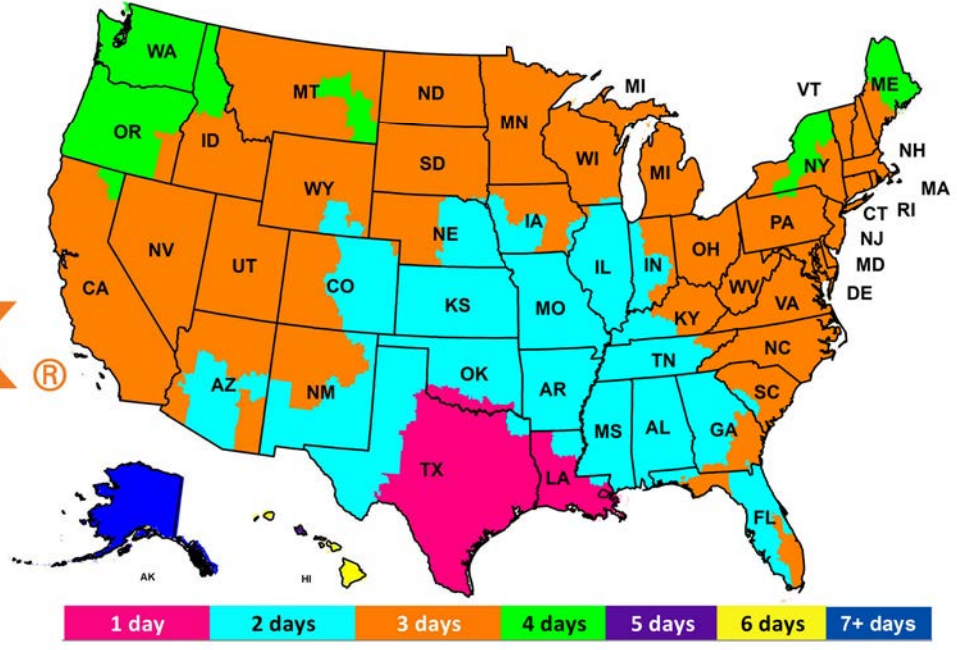
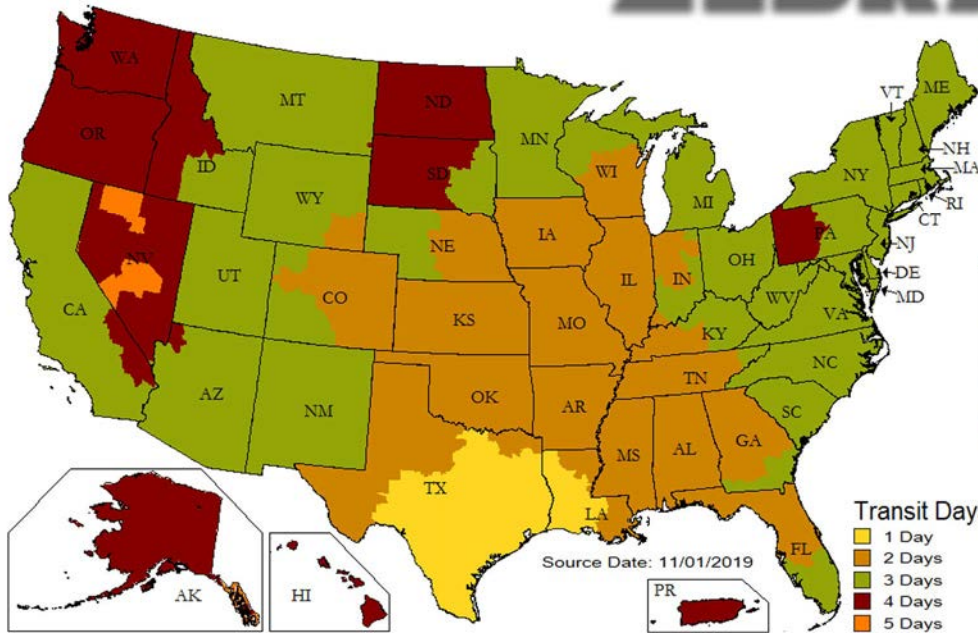
RIGHT TO PROMOTE:

- Unless specified in writing at the time the Purchase Order is received, we reserve the right to use any item produced by us for display and promotion. Some imprints that appear in our literature are products that we have produced; however, their presence does not constitute endorsement. Images shown on product sample are not available for print.

PRICING:

- Due to the rising cost of raw materials, Catalog pricing is subject to change without notice

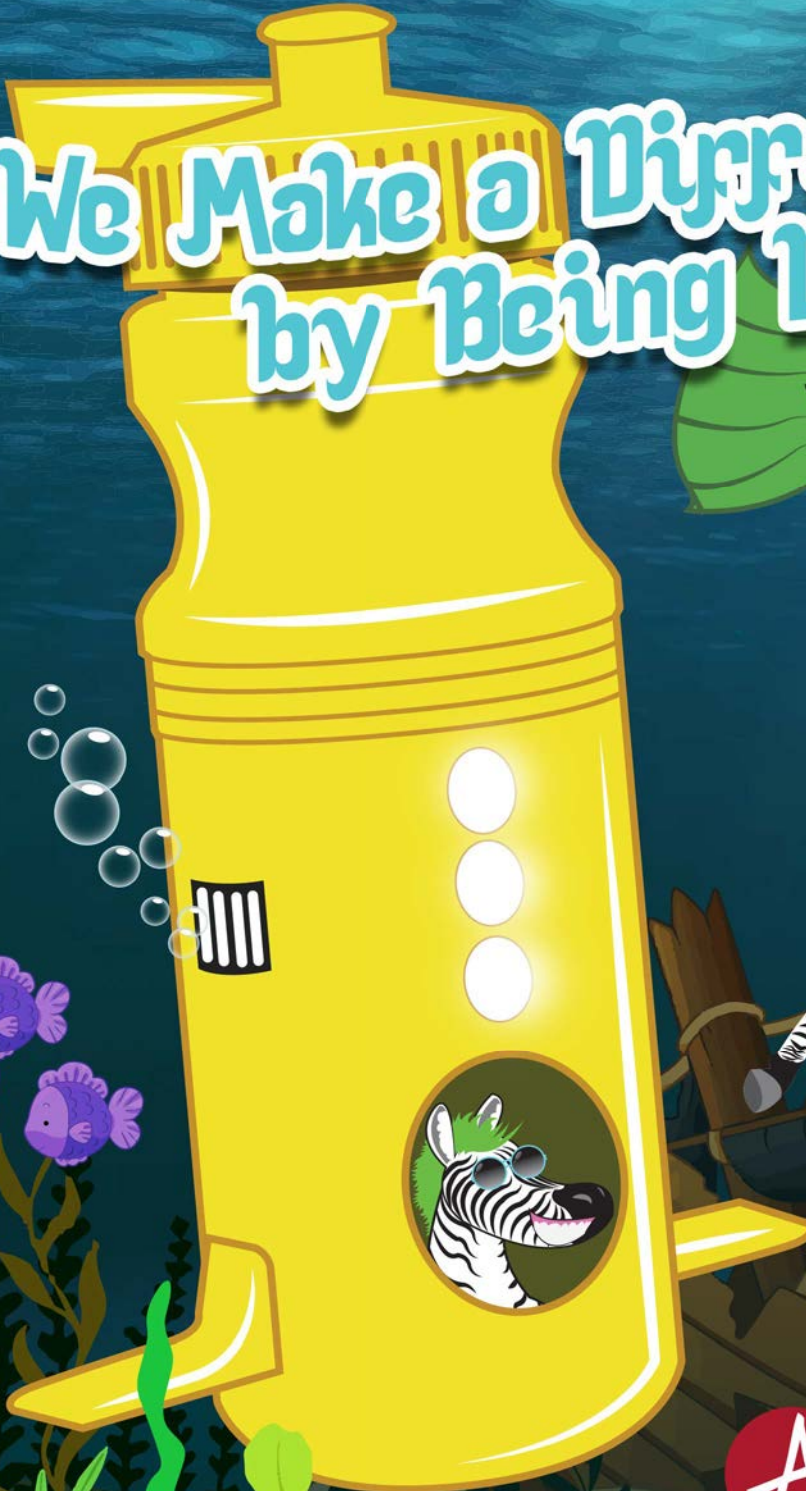
SHIPPING FROM THE AMERICAN ZEBRA LINE FACTORY 77057



These are *average* shipping times. Transit times may vary from order to order. These maps are provided to give you an idea of how long it may take for your order to arrive via GROUND shipping, and are not guaranteed. Each map has been sourced from both shown websites and is subject to updates.

AmericanZebra.com

We Make a Difference
by Being Different.



2019
SAGE
RATED SUPPLIER



5-STAR SUPPLIER
★★★★★

PPAI 111698

UPIC AMZEBRA

ASI 35745

SAGE 50724