

SOUTHERN PLUS



Umbrellas, Chairs, Bags, Blankets, Aprons, Coolers, Robes/Spa, Picnic, Ponchos, Folding Tables

2020

ASI 88367  
PPA110918  
UPIC SOUTHPLS

# TABLE OF CONTENTS

1-26	_____	Bags
27-34	_____	Esprit Collection
35-43	_____	Coolers
44-47	_____	Blankets
47	_____	Robes
48	_____	Towels
49	_____	Aprons
50-57	_____	Umbrellas
58-59	_____	Ponchos
60-64	_____	Chairs
63	_____	Tables
64	_____	Beach Mat

## PRODUCT DESIGN

We continue to blend what is hot in the fashion and retail markets with what works for our industry, ensuring new fresh product ideas that you can present to your clients.

## PRODUCT SAFETY

Southern Plus is one of only 100 suppliers in the industry to be an early adopter of the PPAI Product Safety Awareness Program. We take product safety seriously.

## CUSTOM PRODUCTION

With our production experience your imagination is the only limitation. Tell us what you want or ask us to bring you design ideas. Whether you just want a custom color on a stock item or a completely unique product design, we can make sure your customers' next promotion is tailor made for their needs. Take advantage of considerable cost savings on overseas orders. We will get back to you as soon as 24 hours on most quotes while some special projects may take longer. Please contact us about your custom project needs today!

## ABOUT US

Since its inception in 1961, Southern Plus has expanded from its original line of umbrellas to other recreational and outdoor-type products for the promotional products industry. The current product lines include: umbrellas, chairs, cooler bags, tote bags, duffels, blankets, picnic ware, and tailgating items. With a focus on product development, Southern Plus has become a trendsetter in these categories, bringing a retail designer look to the promotional products industry. We continually strive to provide cutting edge marketing tools and a user-friendly website to make doing business with Southern Plus as easy as possible.

## CUSTOMER SERVICE

With top ratings by all industry associations we aim to become the easiest supplier to work with. Call or email us today to see for yourself!

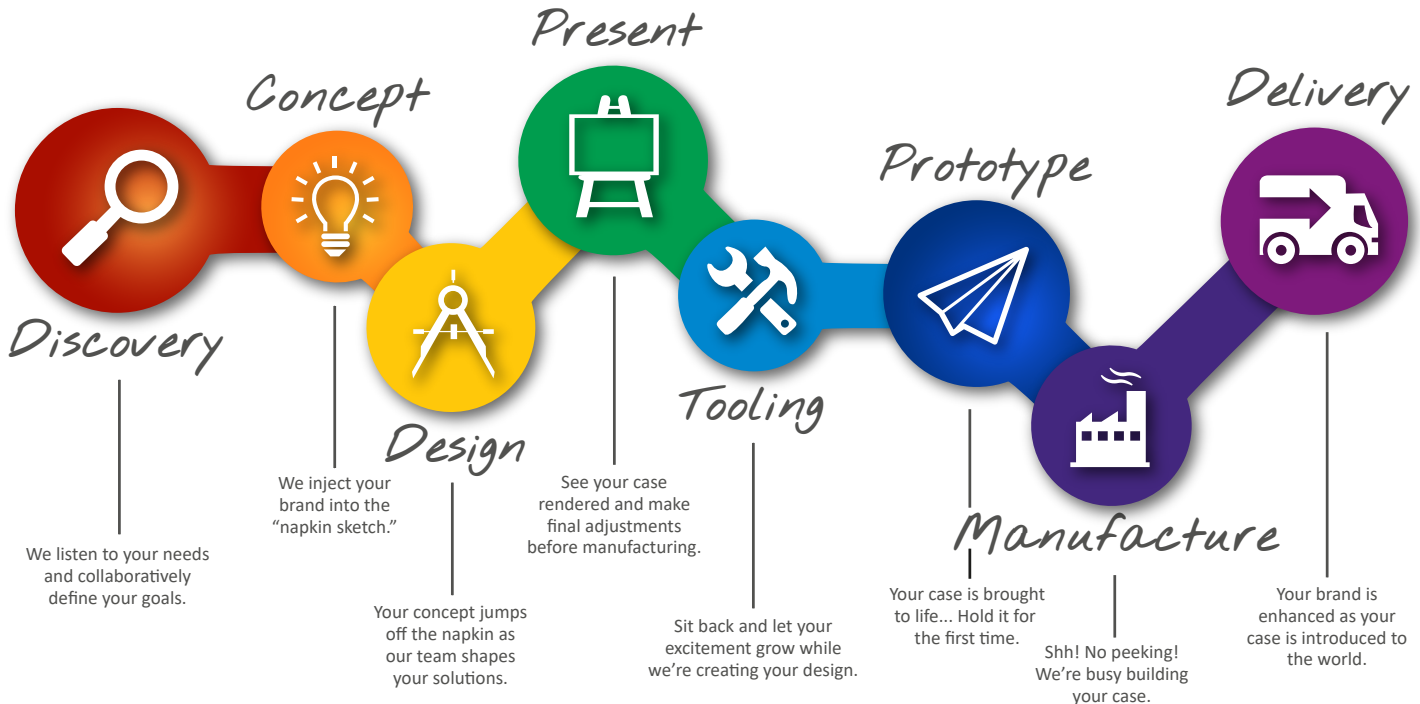
## BI-COASTAL FOB POINTS

With the Esprit Collection, Southern Plus now ships from the West Coast also. This collection offers an amazing color range and budget friendly designs.

## WEB TECHNOLOGY

Whether you are preparing a Quick Virtual Sample, or Customizing a Sales Flyer for your client(s), our website provides the tools that make this a snap. Our One-Click Catalog enables users to literally flip through the pages of (a digital version of) this catalog. You can upload a logo and have a high-resolution customized virtual catalog in your client's inbox in about a minute. This logo will be visible on every item in our catalog. Searching for the perfect customized promotional items has never been quicker or easier. Try our Idea Generator area to uncover the ideal item(s) in our line for your project.

## Ask Us About Custom Production.



### 7080 The Wellington

*Rugged And Relaxed, With A Fabric That's Waxed!*

Whether the outdoors for you is an equestrian event, a food festival or simply strolling down main street, this tote will endure. A unique and durable 12 oz. waxed cotton canvas is the key feature of this handsome tote. The sailcloth-like material is as practical as it is beautiful with water-repellant properties. The wide 100% cotton webbing handles complement the bag perfectly. Rain or shine, this bag will hold your stuff in style and the magnetic closure keeps it safe.

**Color:** Tan

**Size:** 17.5"W x 17"H x 4"D

**Imprint Area:** 9"W x 9"H



Cotton



Wide Cotton Webbing

Magnetic Button Closure



### 7079 The Cape Cod

*Shop, Beach Or Boat With This Plus-sized Tote!*

This bag is as big as it is beautiful! The perfect companion for a weekend trip, the flea market or a walk down to the beach. The rustic elegance of this oversize tote is anchored by the weathered grey stripes and the heavy-duty 14 oz. natural cotton canvas. The thick, twisted cotton rope handles and silver grommets complete the relaxed look. Features an inside open pocket and magnetic closure.

**Color:** Grey/Natural

**Size:** 22"L x 15"H x 6"D

**Imprint Area:** 9"W x 9"H

Woven Rope Straps



### 7087 Boho Tote

*Jumbo, Casual, Boho-Chic, With A Shape That's Comfy And Unique!*

Where form and function collide in a disruptively cool way; letting your inner Bohemian come out and play! This will change the way you tote your stuff forever. The huge size of this bag is only matched by its attitude. 12 oz. cotton with cut-out handles.

**Color:** Natural

**Size:** 18"W x 25.5"H x 5.5"D

**Imprint Area:** 8"W x 10"H

**Oversize Imprint Option:** 11" x 11"

Add \$1.25(v) per piece



Regular Imprint

Oversized Imprint



**7078 Easy Breezy Tote**  
*For Seeing In Or Stepping Out This One You Won't Want To Be Without.*

This large, lightweight, durable mesh tote adds a front pocket for a smooth imprint area and for holding extra accessories. Perfect for the beach, shopping, or travel (security friendly). Nylon Mesh, 600D Polyester. Open pocket on front. Handle length 24". Spot Clean/Air Dry.

**Colors:** Lime, Red, Royal, Yellow  
**Size:** 20"W x 15"H x 5"D  
**Imprint Area:** 6"W x 5.5"H

**7019 Riviera Tote**

*Fashionable Design For The Elegant Look!*

Tote bag with heavy rope handles for the nautical look. Features horizontal accent stripes, bottom board, tethered security pouch and magnetic snap closure. Made of 600D Poly. Handle length 26". Spot Clean/Air Dry.

**Colors:** Black, Red, Royal Blue, Yellow  
**Size:** 22"W x 14"H x 8"D  
**Imprint Area:** 10"W x 4.5"H On Front



**7068 The Educator**

*Packed With Features For The Teachers!*

Pockets galore for supplies and papers and all that a day's worth as an educator requires. Plenty of room for taking home student papers or for those long evenings of grading. 600D poly. Large open main compartment. Front pocket and two side pockets, one open mesh and one solid. Black fabric on bottom panel and back of tote. Color coordinated web handles. Handle length 18". Spot Clean/Air Dry.

**Colors:** Gold, Navy, Red, Royal  
**Size:** 16.75"W x 14.5"H x 3.5"D  
**Imprint Area:** 5"W x 5"H On Front Pocket



**7071 Chevron Tote**

*Catch The Wave!*

Create a wave of excitement with this tote. Call it preppy or call it traditional, the Chevron print is right on trend. 600D Poly. Open top to spacious main compartment. Contrasting black shoulder straps with white detailing. The chevron pattern adds fun and modern elegance. A tote that says summer fun all year round! Handle length 20". Spot Clean/Air Dry.

**Colors:** Black, Orange, Royal

**Size:** 15"W x 15.5"H x 4"D

**Imprint Area:** 9"W x 4"H On Front

**7069 Forum Tote**

*Attend A Forum With More Decorum!*

The ideal tote for a business or educational forum with a front panel full of organizer pockets and a main compartment to hold material, hand-outs, speeches and notes. 600D poly. Zipper closure on main compartment. Large zippered front pocket features interior organizer. Black accents and shoulder straps. Handle length 22". Spot Clean/Air Dry.

**Colors:** Red, Royal

**Size:** 14"W x 11.25"H x 3.5"D full gusset

**Imprint Area:** 6"W x 3"H On Front Pocket

Large zippered front pocket with interior organizer.



**7097 Aruba Tote**

*It's Hard To Avoid Stereotypes, With Its Rope Handle, Grommets And Contrasting Stripes!*

The perfect bag when cruising, yachting, shopping, tanning, resorting or lounging (in the poolside cabana). Some travel may be required. White 600D poly with striped front and solid white back. 100% cotton rope handles measure 26" long.

**Colors:** Aqua, Orange, Red, Royal

**Size:** 15"W x 13"H x 3"D

**Imprint Area:** 10"W x 7"H

Cotton Rope Handles



**7098 Mega Tote**

*Mary, Mary, Quite Contrary, How Many Things Do You Need To Carry?*

This massive carry-all provides extra space when it's needed most. The rigid frame ensures a wide open space for all your weekend gear. Extra-long handles reach over the tallest of shoulders while the inside zippered pocket provides a secure space for keys and money. Also great as a trunk organizer.

**Colors:** Black

**Size:** 21"W x 11.5"H x 10"D

**Imprint Area:** 7"W x 5"H





**7064 The Alumni**

*I've Got Holes In My Pockets!*

A multi-purpose tote for school, work, travel and leisure. 600D Poly with zipper closure. Two side mesh pockets are perfect for water bottles. Large front pocket with additional zippered pocket above. Wide comfortable shoulder straps in grey and pen loop in front. Black and grey accents on front. Back of tote is solid black. Handle length 24". Spot Clean/Air Dry.

**Colors:** Black, Gold, Hunter, Maroon, Navy, Orange, Red, Royal

**Size:** 19"W x 14.5"H x 3.5"D

**Imprint Area:** 4"W x 4"H On Front Pocket

**7066 Mesh Tote**

*A First Round "Draft" Choice*

An oversize tote with a sleek, modern look. Resin mesh and 70D poly accents and handles. Inside zippered pocket keeps keys and valuables safe. The open mesh is ideal for the beach as well as venues with security concerns. Hook and Loop closure. Handle length 24". Limit one color imprint. Spot Clean/Air Dry.

**Color:** Black

**Size:** 15"W x 20"H x 6"D

**Imprint Area:** 8"W x 8"H On Front or Back of tote



**7062 Islander**

*This Bag You'll Yearn On Your Sojourn!*

This versatile carry-all can be used for island hopping or island shopping. Two side pockets for water, cell phone, umbrella, etc. Contrasting bottom panel. Great for tradeshow, travel or shopping. 600D Poly. Handle length 22". Spot Clean/Air Dry.

**Colors:** Lime, Pink, Purple, Red, Royal

**Size:** 17"W x 16"H x 3.75"D

**Imprint Area:** 4" x 6" On Front



**7081 Activa Tote**

*Dress It Up, Or Dress It Down; At The Gym, Or On The Town.*

This athleisure tote is as at home with workout wear as it is with business attire. The premium Compound Dobby polyester performance fabric is super light-weight with a silky touch. The heather finish combined with bold, contrasting straps and zippered, slash pockets give it a stunning and sharp look. Zippered main compartment with 1.5" wide long shoulder straps that extend all around the bag for added strength. The premium grade flush zippers and inside covered seams continue the sleek appearance.

**Colors:** Black/Grey

**Size:** 21"W x 16"H x 4.25"D

**Imprint Area:** 4.5"W x 7"H



Large Front Pocket



**7053 Zensational Tote**

*Show Your Inner Calm.*

This bag shows enlightenment in its tranquil design. The calm floral pattern and cool color palette make this tote Zensational! Grommet detail on straps, open top. Made of 600D Poly. Handle length 23". Spot Clean/Air Dry.

**Colors:** Green, Purple, Red, Royal

**Size:** 14"W x 15"H x 3.5"D

**Imprint Area:** 4"W x 5"H On Front

**7017 Nantucket Tote**

*Colorful And Stylish!*

As at home with the Cracker Barrel crowd as it is with the Bloomingdale bunch. Tote bag with structured bottom, two tone with ribbon and soft rolled handles. Made of 600D Poly. Handle length 21". Spot Clean/Air Dry.

**Colors:** Blue, Pink

**Size:** 17"W x 12"H x 7"D

**Imprint Area:** 9"W x 3"H On Front or Back



**7018 Chino Tote**

*A Casual Look That Means Business!*

This tote has a casual elegance to it, with its two-toned body, contrasting handle and trim detail, and riveted leather accents. Multiple decoration options can transform this piece into something with real sophistication. Add a matching Bamboo Umbrella to complete the perfect fashionable, coordinating set. Fully lined with zippered closure and inside zippered pocket. Angled straps for maximum comfort and casual sophistication. Made of 600D polyester. Handle length 18". Spot Clean/Air Dry.

**Colors:** Green, Pink

**Size:** 18"W x 12"H x 5"D

**Imprint Area:** 4"W x 3"H On Front



**7059 Summit Tote**

*Sporty In The Front, Business In The Bag.*

A sporty tote that will take you to the top whether you're climbing the corporate ladder or K2. Front slip pocket, wrapped carry handles and shoulder strap. Grommet details and zipper closure. 600D Poly. Handle length 19". Spot Clean/Air Dry.

**Colors:** Black, Red, Royal Blue

**Size:** 13.5"W x 14.5"H x 5.25"D

**Imprint Area:** 5.5"W x 4"H On Front



**7023 GM Metallic Shopper Tote**

*Bling On A Budget*

Eco-friendly and ego-friendly, this shopper tote is at home on Rodeo Drive and 5th Avenue! You dress yourself up to go shopping, so we dressed our basic shopper tote up to accompany you in style. Perfect as a gift bag! Laminated non-woven PP for extra strength and durability. Handle length 20". Spot clean/Air Dry.

**Colors:** Gold Metallic

**Size:** 12"W x 13"H x 6.5"D

**Imprint Area:** 5"W x 7"H On Front or Back



**7008 Monsoon Tote**

*Iffy Weather's In The Forecast, Be Prepared!*

The perfect downtown commuter business companion. Weatherproof Nylon bag with reinforced PVC bottom. Zippered main compartment and outside pocket. Perfect for storing a folding umbrella (like our FO-43, sold separately). Handle length 28". Spot Clean/Air Dry.

**Colors:** Black, Royal

**Size:** 20"W x 16"H x 2.5"D

**Imprint Area:** 6"W x 5"H On Front



**7026 Town and Country Tote**

*These Stripes Are In When You Go Out*

This colorful tote has a zippered top, structured bottom, padded handles, and two-toned contrast striping to give it a racy look. Features front slip pocket. 600D Poly. Handle length 26". Spot Clean/Air Dry.

**Colors:** Green, Pink, Red, Sky Blue, Tan

**Size:** 21"W x 12"H x 8"D

**Imprint Area:** 4.5"W x 4"H On Front Pocket





**7096 Nottingham Tote**

*With Leather-Like Handles And Fabric Like Tweed, This Upscale Bag Is A Whole Different Breed.*

You don't need to live in an English manor to appreciate this classic heather and leather tote. It's the perfect blend of luxury and country casual. Heavy-duty 600D Heather Polycanvas. Handle length: 26".

**Colors:** Blue, Grey, Red  
**Size:** 17"W x 13.75"H x 5.5"D  
**Imprint Area:** 10"W x 6"H

**7095 Cargo Tote**

*Its Look And Its Fabric Are Rugged And Tough, With Plenty Of Pockets To Store All Your Stuff!*

This handsome carry-all mixes business savvy with extra-curricular versatility to keep your work and life organized and in balance. Dual zipper accommodates a lock for security when travelling. A mesh side-pocket and front zippered pocket provides ample storage. 600D polycanvas in a unique "snow" blend. Handle length: 24".

**Colors:** Grey  
**Size:** 17.75"W x 16"H x 4"D  
**Imprint Area:** 6"W x 6"H



**7065 Vogue Tote**

*Nada Es Mejor If Prada You Adore!*

This elegant tote can be spotted on Rodeo drive or at the local mall. Whether you're bistro hopping or shoe shopping this bag will turn some heads! Its quilted design, flat front pocket, and lacquered finish makes this a stunning tote. Nonwoven laminated PP. Handle length 19". Limit 1 color imprint. Spot Clean/Air Dry.

**Colors:** Black  
**Size:** 14"W x 14.75"H x 7"D  
**Imprint Area:** 4.5"W x 4"H On Front Pocket

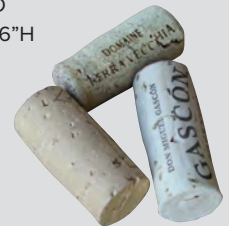


**7094 Cask and Cork Wine Tote**

*Dramatic Black Body And Edge Tipped In Cork, Upgrades A Bottle To Uptown New York!*

They say never put new wine in an old wine skin...so why put a good bottle in anything less than a beautiful bag? A tall and roomy design accommodates a multitude of bottle shapes and sizes. 600D poly with cork fabric accents.

**Colors:** Black  
**Size:** 3"W x 10.5"H x 3"D  
**Imprint Area:** 2.25"W x 6"H

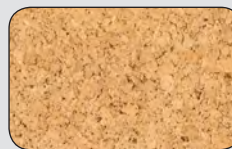


**7093 Cork Tote**

*Contrasting Top With Cork At The Base, Enhances Your Logo On Its Elegant Face!*

This unique combination of fabric and cork adds fashion and flare to a simple tote. In black and tan, it suits woman or man! 600D poly with cork panel on front. Handle length: 20".

**Colors:** Black  
**Size:** 13.75"W x 14.5"H  
**Imprint Area:** 10"W x 6"H



Cork Material





**7054 Dealmaker Tote**

*Boardwalk To Boardroom!*

A perfect work tote with large front zippered pocket, zippered main compartment and side mesh pocket. Double layered fabric handles are extra long to accommodate a heavy load. From the boardwalk to the boardroom, this tote will show who's the boss! Made of 600D Poly. Handle length 24". Spot Clean/Air Dry.

**Colors:** Black, Lime, Orange, Pink, Red, Royal

**Size:** 17"W x 15"H x 4.5"D

**Imprint Area:** 4"W x 4"H On Front Pocket

**7061 Dossier Tote**

*A Look That's Fresh With Pockets Mesh!*

Whether your stuff is top secret or not, this zippered tote will conceal for real, keeping contents secure. Grommet detail on handles, contrasting bottom panel with mesh side pockets. 600D Poly. Handle length 21". Spot Clean/Air Dry.

**Colors:** Red, Royal

**Size:** 18"W x 13.5"H x 3"D

**Imprint Area:** 5.5" x 4.5" On Front



**7004 Metro Tote**

*Comfortable Elegance*

This may be one of the best overall values in our line. Rolled handles for extra comfort. Zippered closure, hard bottom panel. Simple and elegant! 600D Poly. Handle length 23". Spot Clean/Air Dry.

**Colors:** Red, Royal Blue

**Size:** 17.5"W x 12"H x 4"D

**Imprint Area:** 8"W x 5"H On Front

**7014 Wallaby Tote**

*Personalize Your Tote With Your Business Card!*

Features large outside and clear business card pockets. Free insertion of your cards into business card pocket. Great convention tote. 600D Poly. Handle length 24". Spot Clean/Air Dry.

**Colors:** Black, Royal

**Size:** 14"W x 11"H x 4"D

**Imprint Area:** 4.5"W x 5.5"H On Front Pocket



**7099 Beach & Sports Pack**

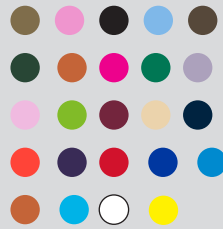
*Haul From The Ball Field Or Pack For The Shore, Invert When Idle, Fold, Zip And Store!*

This packable backpack adds convenience to versatility for the ultimate travel companion. The zippered front pocket inverts and creates a compact pouch. The mesh fabric provides visibility as well as air flow for wet or dirty clothes. It also makes this pack very light-weight. 210D poly and hexagon mesh.

**Colors:** Lime, Red, Royal

**Size:** 10.5" Diameter x 10.5"W x 16.75"H

**Imprint Area:** 4.5"W x 3"H



**7430 CQ/NQ Sport Pack**

*Kid Tested, Budget Approved*

There are very few things that you can't pack with this lightweight cotton on your back. Drawstring backpack with white drawcord. 6 oz. cotton. Spot Clean/Air Dry.

**Colors:** Army, Azalea, Black, Carolina Blue, Chocolate, Forest Green, Gold, Hot Pink, Kelly Green, Lavender, Light Pink, Lime, Maroon, Natural, Navy, Orange, Purple, Red, Royal Blue, Sapphire, Texas Orange, Turquoise, White, Yellow

**Size:** 14"W x 18"H

**Imprint Area:** 8"W x 10"H On Front or Back

**7500CQ Drawstring Backpack**

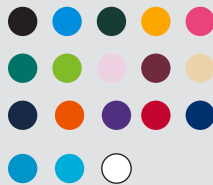
*I'm Quite The Catch And My Corners Match!*

Backpack with full size front zippered pocket. Durable 210D Poly. Color-matched reinforced corners and drawstring for a sleek look. Spot Clean/Air Dry.

**Colors:** Black, Carolina Blue, Forest, Gold, Hot Pink, Kelly Green, Lime, Light Pink, Maroon, Natural, Navy, Orange, Purple, Red, Royal, Sapphire, Turquoise, White

**Size:** 15"W x 18.75"H

**Imprint Area:** 6"W x 8"H On Front



**7431 CQ/NQ Goody 2 Shoes Bag**

*For Shoes, Gifts, Or SWAG; Use This Multipurpose Bag.*

This bag, while subtle, comes to life with the right logo and contents! This versatile, 100% cotton cinch bag can be used for a shoe bag, gift bag, suitcase organizer/laundry, or to pull together all types of SWAG! 7 oz. Canvas, drawstring closure.

**Colors:** Black, Natural, Navy

**Size:** 11"W x 16"H

**Imprint Area:** 6"W x 10"H Front or Back



Cotton Eco Friendly



**7090 Techie Sling Pack**

*If Your Work Attire Is Jeans And T-Shirts, This Will Be Your Briefcase Of Choice!*

This sling pack/backpack hybrid blends the best features of both. The rectangular shape gives it more room than the traditional sling pack while the single strap provides the convenience of the cross-body fit. The wide, thick and adjustable padded strap ensures comfort. Side mesh pocket with D-ring to attach ID or keys for quick access. A zippered outside pocket and earbud porthole rounds out this fully featured pack! Durable 600D poly ensures years of use (and abuse).

**Colors:** Black, Red, Royal

**Size:** 12"W x 16"H x 5"D

**Imprint Area:** 4"W x 4"H on Front Pocket



**7091 The Gamer**

*Stay In The Groove When You Are On The Move!*

This stylish sling pack is perfect for carrying all your portable media! Complete with media port for your earbuds, it is great for an everyday bag, purse/murse alternative or travel companion. Phone, tablet, whatever your pleasure, this bag will hold your treasure. Large main zippered compartment with mesh side pocket. 2" wide, adjustable shoulder strap ensures comfort even when fully loaded. Contrasting color side panel and piping details add to the sporty look of this bag. 600D poly.

**Colors:** Lime, Orange, Red, Royala

**Size:** 13"W x 17"H x 4"D

**Imprint Area:** 4"W x 4"H On Front Pocket



**7092 The Alpha Pack**

*Features Abound When You're Moving Around!*

We didn't hold back on this sling pack! Loaded with features that suit you when you are on the go. In the animal world, the Alpha is the leader; in the world of travel gear, this one leads the pack! A generous main zippered compartment with additional front zippered pocket and a hidden, zippered safety pocket on back provides tons of room while chunky zipper pulls make it a zip to close. Additional features are a wide, adjustable, soft padded shoulder strap, side spongemesh pocket, plus a loop for hanging/storage. Exterior pocket is contoured with piping detail. 600D poly.

**Color:** Black

**Size:** 12.5"W x 19.5"H x 5.5"D

**Imprint Area:** 3.5"W x 4"H On Front Pocket



**7503 Budget Beater Tote**

*Small And Concise And A Non-Woven Price*

The perfect tote to giveaway because of the little you have to pay. Perfect for shows, sales collateral, events, offering ample imprint space for your logo or message. 80 gm non-woven poly.

**Colors:** Azalea, Black, Forest, Gold, Hot Pink, Lime, Light Pink, Kelly, Maroon, Natural, Navy, Orange, Purple, Red, Royal, White, Yellow

**Size:** 15"W x 16"H

**Imprint area:** 9"W x 10"H



**7504 Billboard Tote**

*It's Sized Extra-Large At A Minimal Charge*

When size matters, this one is big and bold yet budget friendly. Its roomy size and imprint area make it an ideal tradeshow bag, carrying their stuff with your message! 80 gm non-woven poly.

**Colors:** Black, Forest, Natural, Navy, Purple, Red, Royal, White

**Size:** 20"W x 16"H x 6"D

**Imprint Area:** 10"W x 8"H



**7023 Shopper Tote**

*Say NO To Paper Or Plastic*

Shopping tote with bottom panel for added structure and strength. Carry straps wrap around the whole bag for extra support. 80 gsm Nonwoven PP. Limited 1 color imprint. Heat transfer is available for multicolor logo. Handle length 23". Spot Clean/Air Dry.

**Colors:** Kelly Green, Light Pink, Lime, Purple, Red, Yellow

**Size:** 12"W x 13"H x 6.5"D

**Imprint Area:** 4.5"W x 7"H On Front or Back



**7050 Fiesta Tote**

*Looking Nice, At A Non-Woven Price*

Eco friendly tote with a twist. Floral pattern, contrasting bottom and handles, and faux stitching detail adds fun to being green. 90 gsm non-woven PP. Limited one color imprint. Heat transfer is available for multicolor logo. Handle length 20". Spot Clean/Air Dry.

**Colors:** Black, Lime Green, Royal Blue, Red, Yellow

**Size:** 17.5"W x 15"H x 11.5"D

**Imprint Area:** 8"W x 7"H Front or Back



**7082 Ashberry Tote**

*Boho, SOHO, Laid-Back Chic, Makes This Tote A Bit Unique!*

This upscale tote features a heavy weight 700 gsm jute fabric that is washed and tumbled, giving it a posh look and feel. In contrast to regular jute, this bag is very soft and cotton-like while the thickness of the material gives it body and strength without a coating. The rich hues of the fabric add depth and richness. The slightly distressed, stonewashed appearance gives this bag a touch of ruggedness, yet the plush fabric provides an upscale appearance. The wide natural cotton straps complete the look.

**Colors:** Red, Royal, Black  
**Size:** 15.5"W x 16.5"H  
**Imprint Area:** 9"W x 9"H



Jute

**NEW**

**7100 The Brimfield**

*My Top And Bottom Are Framed In Cotton, With An Upscale Look That Says "Spoiled Rotten!"*

This is a laminated jute market tote with cotton accents and leather handles. They are perfect for everyday outings, shopping, carrying items for daily needs. These eco-friendly tote bags are made of 100% organic jute and are durable, eco-friendly and safe for the environment. Reusable & Bio-Degradable.

**Color:** Natural  
**Size:** 13"W x 17"H x 8"D  
**Imprint Area:** 7"W x 7"H



Leather Handles



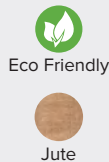
Eco Friendly Jute

**NEW**



Leather Handles

Zipper Closure



Eco Friendly Jute

**7102 The Bazaar**

*Simple And Natural, And 1 Zip, Perfect For Your Next Shopping Trip!*

This is a large Jute/Burlap tote bag with leather handles, rivets, zippered closure and zippered pocket inside. These bags are perfect for parties, events and shows. These eco-friendly tote bags are made of 100% organic jute and are durable, eco-friendly and safe for the environment. Reusable & Bio-Degradable.

**Color:** Natural  
**Size:** 19"W x 14"H x 6"D  
**Imprint Area:** 10" W x 5.5" H

**NEW**

**7101 The Firefly**

*Jute And Leather With An Open Top, Take Me Along Next Time You Shop!*

This is a beautiful jute gift bag with thick leather handles and rivets. These eco-friendly tote bags are durable, sturdy and safe for the environment. They are perfect for everyday outings, shopping, carrying items for everyday uses. 100% Organic Jute. Reusable & Bio-Degradable.

**Color:** Natural  
**Size:** 12"W x 12"H x 4.5"D  
**Imprint Area:** 6"W x 6"H



Leather Handles



Eco Friendly Jute



Juco Front Panel

**7073 Somerset Tote**

*A True "Star Of India"*

Colored Jute fabric with natural Juco front panel is both fashionable and functional. The Juco (Jute Cotton blend) fabric's smoother texture allows more detailed imprint. A large rectangular main compartment is ideal for heavy loads of brochures and paperwork while the soft, rolled handle provides comfort. Handle length 16". Spot Clean/Air Dry.

**Colors:** Black, Orange, Red, Royal

**Size:** 16"W x 13.5"H x 7"D

**Imprint Area:** 8"W x 6"H On Front



Rope Handles

**7075 Horizon Tote**

*We'll Keep Their Eyes On This Horizon!*

Colored jute accents and Juco body is the framework for this beautifully crafted bag. The rope handle with wrapped loop attachment adds another natural element while the piping detail at the bottom provides structure and an elegant finish. Take this tote to work or the beach, not necessarily in that order. Handle length 26". Spot Clean/Air Dry.

**Colors:** Black, Lime, Red, Royal

**Size:** 19"W x 12.5"H x 6"D

**Imprint Area:** 9"W x 5"H On Front or Back



**7058 Maya Tote**

*You'll Want To Brag On This Jute Bag!*

Go natural with this 100% Jute tote. Laminated for added strength and easy cleaning. Cotton striped webbing gives this eco-friendly tote an upscale look. Great for shopping and tradeshows. Handle length 25". Spot Clean/Air Dry.

**Colors:** Black, Royal Blue, Red

**Size:** 16"W x 11"H x 5"D

**Imprint Area:** 3.5"W x 6"H Front or Back



Cotton Striped Webbing



Cane Handles

**7086 Namaste Tote**

*A Canvas Of Jute To Feature Your Brand, And A Shaped Grip Of Cane To Carry By Hand.*

This Jute and Cotton cutie is a thing of tranquil beauty. Premium Juco fabric with contrasting color side panels. Full gusset. Cane Handles.

**Colors:** Black/Natural

**Size:** 15"W x 14"H x 6"D

**Imprint Area:** 10"W x 5.5"H



**7029 Market Tote**

*Jute Never Looked So Cute*

Extra large jute bag, laminated for extra strength. Long, padded, comfortable handles. Eco-friendly and fashionable. Great shopping tote. Jute has antibacterial properties, is a renewable resource, and is recyclable. Handle length 23". Spot Clean/Air Dry.

**Colors:** Black, Lime Green, Orange, Pink, Royal Blue

**Size:** 18"W x 15"H x 5"D

**Imprint Area:** 10"W x 7"H Front or Back



**7052 Colibri Tote**

*How Cute Is This Jute!*

The natural eco-friendly fabric is strong and wholesome while the smaller size makes it ideal for resorts, spas, and conventions. Soft, rope handles add to the upscale look of this bag. Handle length 22". Spot Clean/Air Dry.

**Colors:** Blue, Black, Green, Orange, Pink

**Size:** 12"W x 9.5"H x 4.5"D

**Imprint Area:** 9"W x 6"H On Front or Back



**7060 Shanti Tote**

*Our Youngest Jute Just Graduated!*

Jute tote with inside laminated for strength. Contrasting Cotton webbing handles. Simple, natural, elegant. Handle length 20". Spot Clean/Air Dry.

**Colors:** Berry Purple, Brown

**Size:** 11"W(bottom) x 11.5"H x 4"D

**Imprint Area:** 5"W x 7"H Front or Back



**7085 County Line Tote**

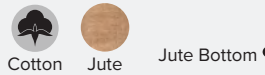
*Cotton And Jute Add Style-To-The-MAX, With Woven Web Straps Like Tire Tracks!*

When it comes to style and unique design, with this contrasting tote we crossed the line. (If where the cotton meets jute is the county line, the straps clearly didn't want to cross it!). 10 oz. Dyed Cotton upper with Natural Jute bottom. Fishbone pattern cotton webbing. Handle length: 24".

**Colors:** Aqua, Khaki, Navy, Red, Royal

**Size:** 20.5"W x 14.5"H x 6"D

**Imprint Area:** 4.5"W x 5.5"H










Thick Cotton Rope Handles

Cotton Upper

Jute Bottom

-  Eco Friendly
-  Cotton
-  Jute

**7076 Santorini Tote**

*Greek Inspired, And Highly Desired!*

Whether you are shopping South Street Seaport or are poolside at a posh resort, this tote fits the bill. It combines natural fibers with earthy tones to create a simply elegant look. Perfect for shopping, travel, beach or pool. 10 oz. cotton upper with raw jute bottom. Thick cotton rope handles. Handle length 29". Spot Clean/Air Dry.

**Color:** Natural

**Size:** 18"W x 15"H x 5"D

**Imprint Area:** Imprint on bottom of bag is 10"W x 3"H for Horizontal logo or 4.5"W x 4"H for Vertical logo. Imprint on top of bag is 10"W x 2.5"H

**7083 Dorothy Tote**

*Somewhere Under This Rainbow, True Words Lie*

The EXTRA thick rainbow straps make for a strong tote for a stronger message. There truly is a pot of gold at the end of this rainbow...your logo! 10 oz. natural cotton. Heavy-duty, wide cotton rainbow-striped web handles. Handle length: 25".

**Colors:** Natural w/Rainbow Handle

**Size:** 15"W x 15"H x 3"D

**Imprint Area:** 10"W x 10"H

-  Cotton



Heavy-duty, cotton rainbow-striped handles

**7072 Menali Tote**

*This One's Draw Is It's Natural And Raw!*

Raw, non-coated jute gives this tote its rugged appeal. The course weave is durable, yet soft. As natural as it comes! Soft cotton webbing in natural with contrasting black stripe. Handle length 26". Spot Clean/Air Dry.

**Color:** Natural

**Size:** 17.5"W x 17"H x 3"D

**Imprint Area:** 5"W x 12"H On Front or Back of Tote



-  Eco Friendly
-  Jute

**7074 Calypso Bag**

*You Can Almost Hear The Steel Drums Playing!*

If your favorite color is stripes, this Cotton Canvas tote is for you. The tote's caribbean colors are perfect for any beach destination but its cool vibe also makes it ideal for carrying your latest flea market or record store find! Handle length 23". Spot Clean/Air Dry.

**Color:** Multi

**Size:** 19.5"W x 16"H x 4"D

**Imprint Area:** 8"W x 3"H On Front

-  Cotton





Cutting Edge



Brass Hardware



Front Pocket



Cotton

**7011 Campus Tote**

*Cutting Edge Design!*

This cutting edge tote bag features a washed finish with frayed edges for a cool and casual look! A large open front pocket provides easy access to keys, phone and ID. High-end upgrades like the wide, thick cotton webbing straps and aged brass hardware make this tote both durable and chic. 100% cotton canvas. Handle length 25". Spot Clean/Air Dry.

**Colors:** Cotton Candy Pink, Green Tea, Slate

**Size:** 17"W x 14"H x 3"D

**Imprint Area:** 4.5"W x 3"H On Front Pocket

**7055 Luna Tote**

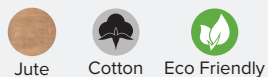
*What Mother Nature Would Carry*

Super strong and extra long jute strap slings over the shoulder for added security and comfort. 10 oz. natural Cotton body provides an extra large canvas for decorating. Load up with books or fresh produce it holds it all. Handle length 21". Spot Clean/Air Dry.

**Color:** Natural

**Size:** 14"W x 17"H x 2.25"D

**Imprint Area:** 9"W x 9"H On Front or Back



Extra Long Jute Strap



Cotton Webbing Handles

Cotton Webbing Straps

Laminated Cotton Canvas

Laminated Jute Bottom

**7084 Catalina Tote**

*With Sturdy Lined Cotton And A Bottom Of Jute, This "Islandy" Tote Is Pretty Darned Cute*

By lining the cotton with one extra layer, this tote stands to be a significant player. It also makes it stain and water resistant. Laminated Cotton Canvas for exceptional body and strength. Contrasting Laminated Jute bottom. Cotton webbing handles with rivet accents.

**Colors:** Black, Natural, Red, Royal

**Size:** 14"W x 15"H x 5"D gusset

**Imprint Area:** 10"W x 6"H



Jute/Cotton Blend



**7028 Woodstock Tote**

*Peace, Love And Birkenstocks*

60% Jute blended with 40% Cotton makes this the natural choice. Environmentally friendly; made from renewable resource. Extremely durable and mold resistant. The rugged texture makes it ideal for concerts, festivals, or farmers markets. Handle length 24". Spot Clean/Air Dry.

**Color:** Natural

**Size:** 15.25"W x 15"H x 4"W

**Imprint Area:** 10"W x 8"H On Front or Back

**7035 HRT Morph Sac Heart**

*Who Loves You Baby?*

A unique shopper. Tote morphs into its own heart shaped drawstring pouch. 190T Poly. Spot Clean/Air Dry.

**Colors:** Pink, Red

**Size:** 15"W x 15"H

**Imprint Area:** 8"W x 8"H On front or back of bag or Extra 1 color imprint 2"W x 1"H on pouch



**7036 CAS, 7036 SBR, 7039 FISH**

A unique shopper. Tote morphs into its own promotional-shaped drawstring pouch. 190T Poly.

**Colors:** As Shown

**Size:** 15"W x 15"H

**Imprint Area:** 8"W x 8"H on FISH & SBR. / CAS 9"W x 3"H / or Extra 1 color imprint 1.5"W x 1.5"H On Pouch



**7038 Morph Sac - Sports**

These strap sacks Morph into their own sports ball-shaped drawstring pouch.

**Colors:** As Shown

**Size:** 15"W x 15"H

**Imprint Area:** 9"W x 2"H on Tote or Extra 1 color imprint 3"W x 3"H On Pouch



**7037 Golf Morph Sac**

*Always Handy When Your Shoes Are Sandy*

A unique golf tournament giveaway. The golf ball morphs into a large drawstring bag. Great shoe bag or use for general storage. Spot Clean/Air Dry.

**Colors:** Black

**Size:** 15"W x 15"H

**Imprint Area:** 9"W x 2"H On Front or Back of bag (1) or 3"W x 3"H Extra 1 color imprint on pouch

**MISCELLANEOUS INFORMATION**

All items ship flat (not folded). Additional charges apply if totes need to be folded into pouch

Additional imprint charges:

Add \$0.75(v) for additional imprint colors on TOTE.

Add \$1.25(v) for 1 color imprint on POUCH.

(Pouch imprints not available on Fish and Football designs)

Screen charges: \$55(v) per color. Repeat Orders: Screen charge \$35(v).

Limited to white or black ink only. Other imprint colors require heat transfer.

**7484 CQ/NQ Soho Tote**

*Hipster, Trendy, Soho Chic, Some Might Even Say "On Fleek"!*

This super-cool cotton canvas cross-over will surely be your go to bag if casual, comfort, and convenience is key. With an extra-long and extra wide strap, this extra-large bag is extra special! 10 oz. Cotton Canvas. Single, extra-long shoulder strap measures 46"L x 4"W. Cross-body design.

**Colors:** Natural/Black, Black/Natural, Natural/Natural

**Size:** 15"W x 16"H x 3"D

**Imprint Area:** 10"W x 10"H



Extra Long and Wide Strap



Cotton

**7482 CQ/NQ Carmel Tote**

*Rugged And Beautiful Just A Bit Smaller, Might Even Help You Save A Dollar!*

A smaller sibling of the Big Sur Tote, the premium Duck Canvas fabric features a contrasting gusset and straps whose color palette reminds us of the rugged shore lined cliffs touching the sandy west coast beaches. Premium 11.5 oz. Cotton Duck Canvas. Full Gusset 1½" Wide Heavy Cotton Web Handles.

**Colors:** Natural/Black, Natural/Tan, Black/Natural

**Size:** 15"W x 12"H x 4"D

**Imprint Area:** 10"W x 7"H



Cotton



Cotton Web Handles

**7485 CQ/NQ Big Sur Tote**

*Rugged And Beautiful Just Like The Shore, Who Could Ask For Anything More?*

The premium Duck Canvas fabric features a contrasting gusset and straps whose color palette reminds us of the rugged shore lined cliffs touching the sandy west coast beaches. Premium 11.5 oz. Cotton Duck Canvas. Full Gusset 1½" Wide, Heavy Cotton Web Handles.

**Colors:** Natural/Black, Natural/Tan, Black/Natural, Natural/Red, Natural/Royal

**Size:** 14"W x 15"H x 4"D

**Imprint Area:** 10"W x 10"H



Cotton Web Handles



Cotton

**7486 CQ/NQ The Rebel Messenger Bag**

*Natural, Functional, Edgy, And Neat, And A Messenger Flap That Keeps Things Discrete.*

This fashionable "flapper" will showcase a logo or message with its plus-sized imprint space on the front flap, while securing its contents. It is a Rebel WITH a cause...yours! 10 oz. Cotton. Inside zippered pocket. Adjustable wide polyester webbed shoulder strap.

**Colors:** Natural/Black and Black/Natural

**Size:** 16"W x 12"H x 5"D

**Imprint Area:** 10"W x 7"H



Cotton



Zippered Security Pouch



**7480 CQ/NQ**  
**Button Down Tote**

*Its Clean Styling And Button Down Closure, Will Give Any Logo Increased Exposure!*

This bag has a retail style button-closure, and is made of premium Duck Canvas cotton taking this fashionable tote straight to the top. Premium 11.5 oz. Cotton Duck Canvas. Wooden Button-Closure. 1½" Wide, Heavy Cotton Web Handles.

**Colors:** Natural/Black, Natural/Tan, Black/Natural

**Size:** 15"W x 16"H x 3"D

**Imprint Area:** 10"W x 7"H



**7481 CQ/NQ**  
**Continental Tote**

*With Its Contrasting Strap And Generous Size, This Cotton Tote Wins First Prize!*

Where big and bold meets casually classy, so too this plus-sized tote meets all of your needs. Its over-the-shoulder, wider web handles and premium Duck Canvas make it ideal for travel, shopping, tradeshow, and more. Premium 11.5 oz. Cotton Duck Canvas. 1½" Wide, Heavy Cotton Web Handles. Oversize bag. Reinforced stitching at stress points.

**Colors:** Natural/Black, Natural/Tan, Black/Natural, Red/Natural, Royal/Natural

**Size:** 20"W x 15"H x 5"D

**Imprint Area:** 10"W x 10"H

**Oversize Imprint Option:** 14"W x 10"H Add \$1.25(v) per piece

**7483 CQ/NQ**  
**The Edge Tote**

*A Contrasting Gusset And Matching Tape, That Highlights Your Logo In A Picture-Like Shape!*

This blank canvas is just waiting to be painted. Frame your name like the hall of fame with contrasting tape and gusset, and matching wide web handles. Premium 11.5 oz. Cotton Duck Canvas. Full Gusset. 1½" Wide, Heavy Cotton Web Handles.

**Colors:** Natural/Black, Natural/Tan, Black/Natural

**Size:** 14"W x 12"H x 5"D

**Imprint Area:** 10"W x 5"H



**7401 CQ/NQ Rainbow Tote**

*In Every Color Under The Sun, Adding Your Imprint Will Make It More Fun!*

This natural cotton tote bag comes in every color under the rainbow plus a few more. 6 oz. 100% cotton. Self-fabric handles. Light weight, easy to print. Great for tradeshow giveaways, fundraising, event tote, shopping tote. Handle length 21". Spot Clean/Air Dry.

**Colors:** Army, Azalea, Black, Carolina Blue, Chocolate, Forest Green, Gold, Hot Pink, Kelly Green, Lavender, Light Pink, Lime, Maroon, Natural, Navy, Orange, Purple, Red, Royal Blue, Sapphire, Texas Orange, Turquoise, White, Yellow  
**Size:** 15"W x 16"H

**Imprint Area:** 10"W x 12"H On Front or Back



**7402 CQ Handle Anything Tote**

*A Handle Bright As Candlelight!*

We challenge you to find a color that won't match one of these handle colors or a use it won't satisfy! 6 oz. 100% cotton. Self-fabric handle. 22 Different colored handles to choose from will certainly complement any logo. Natural body. Handle length 20.5". Spot Clean/Air Dry.

**Colors:** Army, Azalea, Black, Carolina Blue, Chocolate, Forest Green, Gold, Hot Pink, Kelly Green, Lavender, Light Pink, Lime, Maroon, Navy, Orange, Purple, Red, Royal Blue, Sapphire, Texas Orange, Yellow, Turquoise  
**Size:** 15"W x 16"H

**Imprint Area:** 10"W x 12"H On Front or Back



**7403 CQ Cutting Edge Tote**

*Outlines Your Name Like A Picture Frame*

We've cut the edge of this natural cotton tote with a pinstripe of color to frame your logo or design with an elegant emphasis. 6 oz. 100% Cotton canvas tote. Fancy web handles are padded for comfort. Full side and bottom gusset. Handle length 22". Spot Clean/Air Dry.

**Colors:** Black, Chocolate, Light Pink, Lime, Navy, Red & Royal Blue  
**Size:** 15"W x 16"H x 6"D

**Imprint Area:** 10"W x 12"H On Front or Back



Side Imprint Available



**7404 CQ/NQ Cruise Tote**

*You Won't Need More From Ship To Shore.*

This bag is perfect from ship to shore. Whether you are on an excursion to the pool or the islands, this bag is your perfect companion. 12 oz. Cotton canvas zippered, shopping tote with 22" handle and outside zippered pocket. Handle length 24". Spot Clean/Air Dry.

**Colors:** Black, Chocolate, Light Pink, Lime, Maroon, Natural, Navy, Red, Royal Blue

**Size:** 18"W x 14"H x 4.5"D

**Imprint Area:** 5.5"W x 4"H On Front Pocket



Outside Zippered Pocket

Zippered Pocket



**7406 CQ/NQ Boat Tote**

*Try Our Version On Your Next Excursion.*

Climb aboard with this oversized cotton tote. Its classic, nautical look and extra large body make it the ultimate Boat Tote. Built to withstand any punishment a sailor can dish out. 12 oz. Large canvas deluxe shopping tote with interior zippered pocket. Handle length 28". Spot Clean/Air Dry.

**Colors:** Black, Chocolate, Light Pink, Lime, Maroon, Natural, Navy, Purple, Red, Royal Blue  
**Size:** 22"W x 16"H x 6"D  
**Imprint Area:** 5.5"W x 4"H On Front Pocket



**7407 CQ Triple Band Tote**

*When One Accent Color Just Won't Do.*

This color-block tote shows off three distinct colors in bold horizontal stripes. Bold in design but budget friendly. 12 oz. cotton canvas tri-color promotional tote bag. Natural strap. Handle length 24". Spot Clean/Air Dry.

**Colors:** Black-Natural-Light Grey, Chocolate-Natural-Khaki, Forest-Natural-Khaki, Maroon-Natural-Light Pink, Navy-Natural-Carolina Blue, Purple-Natural-Lavender  
**Size:** 15"W x 15"H x 3"D  
**Imprint Area:** 9"W x 3"H on Front or Back



Cotton



**7408 CQ/NQ Promotional Tote Bag**

*Let Your Logo Brag On This Blue Collar Bag.*

Compared to some it's not all that, but it serves its purpose strong and flat. 12 oz. Cotton canvas tote bag with web handles and reinforced at stress points. Handle length 22". Spot Clean/Air Dry.

**Colors:** Army, Azalea, Black, Carolina Blue, Chocolate, Forest Green, Gold, Hot Pink, Kelly Green, Lavender, Light Pink, Lime Green, Maroon, Natural, Navy, Orange, Purple, Sapphire, Red, Royal Blue, Texas Orange, Turquoise, White, Yellow  
**Size:** 15"W x 16"H  
**Imprint Area:** 10"W x 12"H On Front or Back



Cotton



**7409 CQ/NQ Canvas Jumbo Tote Bag**

*Say 3 Times Fast, Big Bad, Basic Bag*

This might be one you let your husband carry when it gets full. Its generous size allows you to haul it all. 12 oz. Cotton canvas with squared off bottom. Extra long web handles. Reinforced at stress points for added strength. Handle length 22". Spot Clean/Air Dry.

**Colors:** Black, Chocolate, Light Pink, Lime, Natural, Navy, Red, Royal Blue, White, Yellow  
**Size:** 20"W x 15"H x 5"D  
**Imprint Area:** 10"W x 10"H On Front or Back  
**Oversize Imprint Option:** 12"W x 10"H  
 Add \$1.25(v) per piece



Cotton



**7410 CQ/NQ Fancy Shopper**

*This Colorful Cotton Says You're Spoiled Rotten!*

Pick this up and shop in style from your local mall to Miracle Mile. Its corner piping and reinforced seams tells all who see it you're a person of means. 6 oz. 100% cotton. Fancy web handles. Full side and bottom gussets. Handle length 23". Spot Clean/Air Dry.

**Colors:** Black, Natural, Navy, Red & Royal Blue

**Size:** 15"W x 16"H x 6"D

**Imprint Area:** 10"W x 12"H On Front or Back



**7411 CQ/NQ Canvas Sport Backpack**

*Our Strapsack On Steroids!*

This beefy backpack is the natural choice for men & women, or girls & boys. Its neutral body is accented with a colorful bottom band and matching fabric straps. 12 oz. Cotton canvas, self-fabric adjustable straps. Handle length 21". Spot Clean/Air Dry.

**Colors:** Black, Chocolate, Light Pink, Lime, Maroon, Natural, Navy, Purple, Red, Royal Blue

**Size:** 14"W x 18"H x 2"D

**Imprint Area:** 8"W x 10"H On Front



**7412 CQ/NQ Economical Tote Bag With Gusset**

*Saves Some Dimes In Troubled Times*

When you want the focus to be on the message, not the messenger, this is your bag. Simple, versatile, casual, colorful. 6 oz. cotton tote bag. Self-fabric handles. Great shopping alternative to a non-woven bag for added strength and durability. Handle length 22". Spot Clean/Air Dry.

**Colors:** Army, Azalea, Black, Carolina Blue, Chocolate, Forest, Gold, Hot Pink, Kelly Green, Lavender, Light Pink, Lime Green, Maroon, Natural, Navy, Orange, Purple, Red, Royal Blue, Sapphire, Texas Orange, Turquoise, White, Yellow

**Size:** 15"W x 16"H x 3"D

**Imprint Area:** 10"W x 12"H On Front or Back



**7414 CQ Promotional Tote Bag w/ Gusset**

*Does This Logo Go With My Straps?*

Accent your logo with a matching handle color. This budget-friendly bag will make you look good for less. Natural 12 oz. cotton canvas tote with gusset and colorful web handles. Handle length 23". Spot Clean/Air Dry.

**Colors:** Black, Chocolate, Light Pink, Lime, Natural, Navy, Red, Royal Blue, White, Yellow

**Size:** 15"W x 15"H x 3"D

**Imprint Area:** 8"W x 10"H On Front or Back





**7415 CQ/NQ Canvas Gusset Tote Bag**

*Feast Your Eyes On This Midsize!*

12 oz. Cotton canvas tote bag with web handles full side and bottom gussets. Reinforced at stress points. Handle length 19". Spot Clean/Air Dry.

**Colors:** Black, Chocolate, Light Pink, Lime, Natural, Navy, Red, Royal Blue, White, Yellow

**Size:** 15"W x 12"H x 4"D

**Imprint Area:** 10"W x 8"H On Front or Back



**7416 CQ/NQ Canvas Zipper Tote**

*We've Added A Zipper To This Day Tripper.*

12 oz. Cotton canvas tote. Full length top inside zippered pocket. Long self-fabric handles. Squared-off bottom. Reinforced at stress points. Handle length 26". Spot Clean/Air Dry.

**Colors:** Black, Chocolate, Light Pink, Lime, Natural, Navy, Red, Royal Blue, White, Yellow

**Size:** 20"W x 15"H x 5"D

**Imprint Area:** 10" x 10" On Front or Back

**Oversize Imprint Option:** 12"W x 10"H

Add \$1.25(v) per piece

Self-fabric Handles



**7417 CQ/NQ Canvas Book Bag**

*This Cotton Cutie's A Thing Of Beauty.*

12 oz. Canvas book bag. Full side and bottom gusset. Web handles. Great for book stores, gift shops, conferences. Handle length 23". Spot Clean/Air Dry.

**Colors:** Black, Chocolate, Light Pink, Lime, Natural, Navy, Red, Royal Blue, White, Yellow

**Size:** 10"W x 12"H x 3"D

**Imprint Area:** 6"W x 8"H On Front or Back



12"H



10"W

**7418 CQ/NQ Canvas Shopper**

*This Cotton Shopper Is No Milk Dropper.*

12 oz. Cotton canvas shopper tote. Full side and bottom gusset. Web handles. Great alternative to non-woven shopper totes for strength and durability. Handle length 24". Spot Clean/Air Dry.

**Colors:** Black, Chocolate, Light Pink, Lime, Natural, Navy, Red, Royal Blue, White, Yellow

**Size:** 14"W x 15"H x 4"D

**Imprint Area:** 8"W x 10"H

On Front or Back



15"H



14"W

**7419 CQ/NQ Canvas Jumbo Shopper**

*It's One Whopper Of A Grocery Shopper!*

12 oz. Cotton canvas jumbo shopper tote. Full side and bottom gussets. Self-fabric handles. Great upgrade from the basic size shopper tote. Handle length 22". Spot Clean/Air Dry.

**Color:** Black, Chocolate, Light Pink, Lime, Natural, Navy, Red, Royal Blue, White, Yellow

**Size:** 14"W x 17"H x 7"D

**Imprint Area:** 10"W x 12"H On Front or Back

Self-fabric Handles



**7421 CQ/NQ Canvas Big Tote**

*King Kong's Carry On!*

What do you get for the person who has everything? Something to carry it all in! And this bag will do it too! Its oversized body with Hook and Loop closure will give your brand name more exposure. 12 oz. Cotton canvas tote with extra long 24" handles. Handle length 24". Spot Clean/Air Dry.

**Colors:** Black, Chocolate, Light Pink, Lime, Natural, Navy, Red, Royal Blue, White, Yellow

**Size:** 23"W x 17"H x 6"D

**Imprint Area:** 10"W x 12"H On Front or Back

**Oversize Imprint Option:** 12"W x 12"H

Add \$1.25(v) per piece



**7420 CQ/NQ Canvas Gusset Shopping Tote**

*This Little Cutie Is Heavy Duty!*

Basic meets brawny with this cotton shopper tote. Its extra long handles make it easy to sling over your shoulder when the load gets heavy. 12 oz. Cotton canvas shopping tote with 22" handles. Full side and bottom gusset. Handle length 22". Spot Clean/Air Dry.

**Colors:** Black, Chocolate, Light Pink, Lime, Natural, Navy, Red, Royal Blue, White, Yellow

**Size:** 10.5"W x 14"H x 5"D

**Imprint Area:** 6"W x 8"H On Front or Back



Extra Long Handles



**7422 CQ/NQ Canvas Gusset Tote w/ Color Handles**

*For At The Show Or On-The-Go!*

We've framed the gussets with a splash of color and matching handles to jazz up this versatile bag. Its full width front pocket makes it a great tradeshow bag or universal shopper. 12 oz. Cotton canvas tote bag with extra long 24" handles. Side slip pocket for extras. Handle length 24". Spot Clean/Air Dry.

**Colors:** Black, Chocolate, Light Pink, Lime, Maroon, Natural, Navy, Purple, Red, Royal Blue

**Size:** 14"W x 12"H x 5.25"D

**Imprint Area:** 9"W x 3.5"H On Front Pocket



Cotton

Matching Handles



Full Width Front Pocket



**7423 CQ/NQ Canvas Deluxe Tote**

*This Bag's Deluxe For Fewer Bucks*

A smaller version of our Boat Tote, with accented bottom panel, trim and handles. 12 oz. Small cotton canvas shopping tote. Interior zippered security pocket. Reinforced handles extend all the way to reinforced bottom for extra strength and a familiar nautical look. Boat tote styling. Handle length 30". Spot Clean/Air Dry.

**Colors:** Black, Chocolate, Light Pink, Lime, Maroon, Natural, Navy, Purple, Red, Royal Blue

**Size:** 18.5"W x 12"H x 5.5"D

**Imprint Area:** 4"W x 3"H On Front Pocket



**7424 CQ/NQ Large Canvas Messenger Bag**

*Sling This Hottie Across Your Body!*

12 oz. Cotton canvas messenger bag. Its extra long double straps are designed to sling across from one shoulder to the opposite hip to keep it safe and secure. Handle length 42". Spot Clean/Air Dry.

**Colors:** Black, Natural, Navy, Royal Blue, Red

**Size:** 18"W x 14"H x 4"D

**Imprint Area:** 10"W X 9"H On Front or Back



**7425 CQ/NQ Small Canvas Messenger Bag**

*Let Your Logo Brag On This Simple Cross Over Bag.*

12 oz. Cotton canvas messenger bag with an extra-long, single shoulder strap. The cross-body fit of this bag makes it ideal for the commuter - whether on bike or subway. Handle length 40.5". Spot Clean/Air Dry.

**Colors:** Black, Natural, Navy, Royal Blue, Red

**Size:** 14"W x 12"H

**Imprint Area:** 10"W x 8"H On Front or Back



Single Shoulder Strap



**SMALL 7426 CQ/NQ, MEDIUM 7427 CQ/NQ, LARGE 7428 CQ/NQ CANVAS DRAWSTRING BAG**

12 oz. Cotton canvas drawstring sling sack. Web shoulder strap. Reinforced at stress points. Great for laundry bag, travel duffel, or sport bag. Spot Clean/Air Dry.

**Colors:** Black, Natural, Navy, Red, Royal

**Size:** As Shown

7426 CQ/NQ – Imprint Area 9”W x 9”H

7427 CQ/NQ – Imprint Area 10”W x 10”H

7428 CQ/NQ – Imprint Area 10”W x 11”H Front or Back

**Oversize Imprint Option On 7428 Only:** 11”W x 11”H.

Add \$1.25(v) per peice



Cotton



7426 NQ



7427 NQ



7428 NQ

**7429 CQ/NQ Canvas Standard Tote Bag**

**Plus Size Pocket!**

Its large, edge-to-edge front pocket is enough to make a kangaroo envious! Its extra long handles make it extra comfortable on your shoulder. Spot Clean/Air Dry. 12 oz. Cotton canvas shopping tote bag with 27” handles, inside zipper pocket. Spot Clean/Air Dry.

**Colors:** Black, Chocolate, Light Pink, Lime, Maroon, Natural, Navy, Purple, Red, Royal

**Size:** 17”W x 13”H x 5”D

**Imprint Area:** 10” X 4.5” On Front Pocket



Cotton



Extra Long Handles

Front Pocket

**7451 NQ Pure & Simple Tote**

**With A Look That Is Simple, Natural, And Clean, And An Organic Footprint To Qualify “Green”!**

Our top selling cotton tote is now even more eco-friendly in this organic cotton version! This tote is Mother Earth approved and will allow you to do your part for the environment on a budget. 6 oz. 100% Organic cotton. Self-fabric handles. Light weight and easy to carry. Great for tradeshow giveaways, fundraising, event tote, shopping tote. Handle length 21” Spot Clean/Air Dry.

**Colors:** Natural

**Size:** 15”W x 16”H

**Imprint Area:** 10”W x 12”H On Front or Back



Cotton



Eco Friendly



Self-fabric Handles

**7459 NQ Harmony Tote**

**Say 3 Times Fast, Big Bad, Basic Bag**

100% organic cotton ensures this big tote leaves a small foot print on the environment! This eco-friendly bag is large enough to carry all your guilt from not recycling all your plastic, letting the compost project go, and enjoying your SUV. When eco-friendly is top of mind, this bag is #1. Its generous size allows you to haul it all. 7 oz. organic cotton canvas. Long web handles. Handle length 22”. Spot Clean/Air Dry.

**Colors:** Natural

**Size:** 20”W x 15”H x 5”D

**Imprint Area:** 10”W x 10”H On Front or Back

**Oversize Imprint Option:** 12”W x 10”H. Add \$1.25(v) per piece



Cotton



Eco Friendly



15”H

5”D

20”W

**7277 Sundance Backpack**

*Up Dressed With Some Southwest.*

This comfortably casual backpack features a pigment dyed, prewashed fabric with a pastel palette. Premium 12 oz. pigment dyed cotton canvas drawstring bag. Matching web drawstring. Zippered front pocket.

**Colors:** Black, Denim Blue, Red, Grey, Tan, Olive Green, Periwinkle Blue, Turquoise Green, Seafoam Green, Navy

**Size:** 14.5" x 17.5" (Front pocket opening: 13.5"W)

**Imprint Area:** 10"W x 9"H On Front Pocket

**OverSize Imprint Option:** 11.5"W x 9"H. Add \$1.25(v) per piece



**7271 Taos Tote**

*It Tells A Story In Its Faded Glory.*

This comfortably casual tote features a pigment dyed, prewashed fabric with a pastel palette. Premium 12 oz. pigment dyed cotton canvas. Extra-long 26" handles.

**Colors:** Denim Blue, Red, Grey, Tan, Olive Green, Periwinkle Blue, Turquoise Green, Seafoam Green, Black, Navy

**Size:** 14.75"H x 19.5"W x 5" (expanded width)

**Imprint Area:** 10"W x 9"H On Front or Back

**OverSize Imprint Option:** 12"W x 9"H  
Add \$1.25(v) per piece



**7201 Zippered Tote**

*Just Zip It! Zip It Good!*

This big, bold, basic bag adds a zippered top to keep contents secure! You can't find a color it isn't offered in! Spot Clean/Air Dry. 600 Denier Polyester blended with 50% Recycled material. Zippered tote. 28" color-matched handles. Durable webbing reinforced top. Handle length 28". Spot Clean/Air Dry.

**Colors:** Black, Brown, Cardinal, Charcoal, Florida Teal, Forest, Grey, Hot Pink, Kelly, Khaki, Lavender, Light Blue, Light Pink, Light Tan, Maroon, Navy, Olive, Orange, Purple, Red, Royal Blue, Safety Orange, Turquoise, White, Yellow

**Size:** 18"W x 16"H x 4.5"D

**Imprint Area:** 10"W x 10"H On Front or Back



Top Seller

26 Colors



**7921 Zippered Toiletry Bag**

*Take Away The Ouch With This Perfect Zippered Pouch!*

For men and women; Perfect for travel; Self material handle and outside zipper pocket. 70 Denier.

Colors: Black, Teal, Royal Blue, Red, Navy Blue

Size: 10"W x 6"H x 4"D

Imprint Area: 7"W x 2.8"H



**7920 Foldaway Toiletry Bag**

*It CLEARLY Helps You Organize, Everything That's Travel Size!*

3 Clear Zipper Pockets; Fold up for easy storage; Travel bag for men and women. 70 Denier.

Colors: Red, Royal, Black, Navy Blue, Teal

Size: 10.5"W x 22"H Long open x 4"D

Imprint Area: Front Flap: 6"W x 2.5"H; Inside Front: 7"W x 3"H



**7910 Hip Pack**

*This Fanny Is Not For Your Granny!*

Main zipper compartment; Adjustable strap (up to 45") with buckle closure. 300 Denier Polyester.

Color: Heather Grey

Size: 14"W x 6"H x 3.5"D

Imprint Area: Pocket: 5"W x 2.75"H Top: 3"W x 1"H



**7861 The Manhattan Duffel**

*It'll Carry A Bunch, So You Can Workout At Lunch!*

Large capacity; U zipper top; Large front zipper pocket; Large end zipper compartments; Side open pocket; Hard board bottom insert; Double carry handles; Adjustable and detachable shoulder strap w/rubber grip (36" to 56.6"). 600 Denier w/Leatherette Trim.

Colors: Black, Olive Green

Size: 20"W x 10"H x 10"D

Imprint Area: Front & Back: 6"W x 5"H; Top: 9"W x 4"H; Ends: 6"W x 5"H



**7862 Saddlebag Duffel**

*Room For Your Stuff And Your Friend's, With Even More Space On The Ends!*

2 large zipper end compartments; Hook & loop hand grip; Adjustable and detachable shoulder strap (36" to 57") with comfort pad; Open zipper end pocket with Hook & loop closure; Bottom hardboard insert. 600 Denier Polyester, Metallic Dobby.

Colors: Royal Blue, Silver Grey

Size: 21"W x 12"H x 13"D

Imprint Areas: Front Pocket: 6"W x 5"H;

Back: 9"W x 4"H;

Ends: 4"W x 6"H;

Top: 9"W x 5"H



**7860 Sporty "GO" Bag**

*All The Things You'll Need When Your Time's Been Freed!*

Two front mesh pockets; Open front pocket; Adjustable shoulder strap (24" to 44"); U zipper top for easy use. 600 Denier Polyester.

Colors: Orange, Navy Blue, Grey, Black, Red, Royal Blue

Size: 17"W x 9.5"H x 9.5"D

Imprint Area: Front & Back: 5"W x 4"H; Top: 10"W x 5"H



**7702 VIP Stadium Tote**

*At The Game OR On Tour, This One Keeps Your Stuff Secure!*

Clear security stadium tote approved by the NFL; This bag complies with the new NFL stadium & PGA regulations for clear bags; Perfect size for any sporting event and outdoor outings; Double zipper pulls closure; Open front pockets; Long should straps (29.5"). Heavy Clear PVC.

**Colors:** Black, Navy, Royal, Red

**Size:** 12"W x 12"H x 6"D

**Imprint Area:** Front & Back: 8"W x 6"H;

NFL/PGA  
Compliant



**7700 Clearly Perfect Tote**

*It's Clearly Nothing Fancy, But All Its Contents You Can See!*

NFL Stadium & PGA compliant bag size; 1" wide handles. Clear PVC 0.2mm.

**Color:** Black, Navy, Royal Blue

**Size:** 12"W x 12"H x 6"D

**Imprint Area:** 7"W x 7"H. NFL/PGA use: 3.4"W x 4.5"H

NFL/PGA  
Compliant



**7703 Upper Deck Stadium Tote**

*This One's Clear Enough To Show Off All Your Stuff!*

NFL Stadium & PGA compliant bag size; Piping around bag; 2 Handles: 29". Clear PVC.

**Color:** Black

**Size:** 12"W x 12"H x 6"D

**Imprint Area:** Front & Back: 7"W x 7"H. NFL/PGA use: 3.4"W x 4.5"H

NFL/PGA  
Compliant





**7737 Conference Tote**

*Just For The Essentials, With A Pocket For Credentials!*

Colored body with black handles and trim; Double pen loops; 2 Handles – 25". 600 Denier Polyester.

**Colors:** Royal Blue, Purple, Red, Black

**Size:** 15"W x 14.5"H x 1"D

**Imprint Area:** Front & Back: 8"W x 8"H



Double Pen Loops

**7738 Show Goer Tote**

*Zip Your Jotter Inside, Slip Your Water Outside.*

Zipper top; Front mesh pocket for water bottle; Long handles (28") . 600 Denier Polyester.

**Colors:** Black, Red, Blue

**Size:** 18"W x 13.5"H x 5.5"D

**Imprint Area:** Front: 7"W x 7"H; Back: 10"W x 7"H



Zipper Top

Front Mesh Pocket

**7731 Perfect Poly Tote**

*Feel Free To Gloat Over This Perfect Poly Tote!*

Matching self fabric handles; Large imprint area; 2 Handles: 27". 600 Denier Polyester.

**Colors:** Lime Green, Pink, Fuchsia, Teal, Red, Black, Orange, Royal Blue, White, Purple

**Size:** 18"W x 14.5"H x 4"D

**Imprint Area:** Front & Back: 10"W x 8"H



Matching Self Fabric Handles



**7802 Jupiter Messenger Bag**

*This One's Out Of This World!*

Zipper pocket on front flap; Open side pocket; Adjustable shoulder strap: 29-54". 600 Denier Polyester.

**Colors:** Black

**Size:** 15"W x 11.5"H x 4.5"D

**Imprint Area:** Front Flap:

10"W x 5"H;

Back: 10"W x 7"H



**7803 Mercury Messenger Bag**

*The Perfect Bag For Life In The Fast Lane!*

Front zipper pocket; Full organizer under flap; side mesh pocket; Side open pocket; Adjustable shoulder strap: 26-50"; iPod port. 600 Denier Polyester, Doby Trim.

**Colors:** Black, Royal Blue, Navy Blue, Red

**Size:** 11"W x 13.5"H x 4.5"D

**Imprint Area:** Front Flap Pocket: 5"W x 5.5"H



**7804 Saturn Messenger Bag**

*Not A Messenger From Space But Equally Intriguing!*

Front zipper pocket; earphone port; Double pen pockets under flap; Hook & loop strap gusset closure; Side mesh pocket; Carry handle; Adjustable should strap: 26-50". Material: 600 Denier Polyester.

**Colors:** Black, Royal Blue

**Size:** 13.5"W x 12"H x 3"D

**Imprint Area:** Front Flap Pocket:

5.5"W x 4"H



**7726 Crossbody Conference Bag**

*You Can Collect More SWAG When You're Carrying This Bag!*

Large front pocket; Organizer inside front pocket; Adjustable shoulder strap (30-52.5"); Two open side pockets; Pen holders; Drop-in covered board; 90+GSM Non-Woven Polypropylene. Recyclable.

**Colors:** Lime Green, Royal Blue, Red

**Size:** 15"W x 16"H x 5"D

**Imprint Area:** Front and Back: 9"W x 7"H



**7844 Collegiate Backpack**

*It Makes A Nice Addition At Any Competition!*

Metallic Doby trim; Padded adjustable shoulder straps; 2 mesh pockets for water bottles; iPod port; Double zipper pulls. 600 Denier Polyester w/ Metallic Doby.

**Colors:** Silver Grey, Royal Blue

**Size:** 13"W x 18.5"H x 6.25"D

**Imprint Area:** Pocket: 5"W x 5"H



**7843 The Classroom Backpack**

*Why Everybody Looks When You're Carrying Your Books!*

Open front pocket with hook & loop closure; Double zipper pull; Side mesh pocket for water bottle; Adjustable shoulder straps. 600 Denier Polyester.

**Color:** Royal Blue, Red, Black

**Size:** 12"W x 16"H x 5.25"D

**Imprint Area:** Above Pocket: 7"W x 4"H; Front Pocket: 8"W x 5" H



**7846 The Commuter Backpack**

*Your Logo Will Help Coif This Perfect Mobile Office!*

Padded compartment – holds most laptops up to 17"; Front zipper pocket with iPod port and organizer; Padded shoulder straps for comfort; 2 mesh pockets for water bottles. 600 Denier Polyester, Metallic Doby.

**Colors:** Silver Grey, Royal Blue, Black

**Size:** 13"W x 18"H x 6.5"D

**Imprint Area:** 6"W x 4.5"H



**7842 The Curriculum Backpack**

*Too Cool For School!*

2 mesh side pockets; iPod port; Padded adjustable padded shoulder straps; large front zipper pocket. 600 Denier Polyester.

**Colors:** Orange, Red, Lime Green, Black, Royal Blue, Grey

**Size:** 12.5"W x 16.5"H x 7.5"D

**Imprint Area:** Pocket: 5"W x 4"H;

Above Pocket: 6"W x 4"H



**5307 The Chiller Cooler**

*When Your Plans Demand 24 Cans!*

Insulated with lead-free PEVA lining; Heat sealed & Leak proof; Large front zipper pocket; Adjustable shoulder strap (21" to 41"). 600 Denier Polyester.

**Color:** Black, Red, Royal Blue

**Size:** 9.5"W x 10.25"H x 10"D

**Imprint Area:** Front Pocket: 6"W x 5"H; Top: 6"W x 6"H



24



**5308 The Big Chill Cooler**

*When Your Plans Call for Maximum Cans!*

Insulated with lead-free PEVA lining; Heat sealed & Leak proof; Large front zipper pocket; Large side mesh pocket; Hook & loop hand grip; Adjustable and detachable shoulder strap with rubber shoulder pad (32" to 50.5"). 600 Denier Polyester.

**Color:** Black, Red, Royal Blue, Lime Green

**Size:** 13.5"W x 11.5"H x 11"D

**Imprint Area:** Front Pocket: 9"W x 4"H; Top: 7"W x 7"H



36



**5211 Easy Dozen Cooler**

*We Took A Chancy With Nothing Fancy!*

Proof that sometimes "less is more" with this 12 pack insulated cooler with PVC-backing. Zippered front insulated pocket. Adjustable black handle. Black contrasting bottom panel and accents for a sleek look. 600D poly. Front zippered pocket and adjustable shoulder strap. Leak proof PEVA liner. Holds 12 cans.

**Color:** Black, Forest, Hot Pink, Kelly, Navy, Purple, Red, Royal

**Size:** 10.5"H x 10.25"W x 6"D

**Imprint Area:** 6"W x 3"H On Front Pocket



**5200 Lunch Tote**

*Add Some Color To Your Diet!*

This sturdy lunch tote can also double for a six-pack cooler. Its insulated liner keeps your contents warm or cold. Its broad array of color choices means you may not see another one just like it. Made with 50% recycled material. Single zippered main compartment. Matching 1.5" wide handles with 7" drop length. Foil insulated interior.

**Colors:** Black, Brown, Burnt Orange, Cardinal, Forest, Gray, Hot Pink, Kelly, Lavender, Light Blue, Light Tan, Maroon, Navy, Olive, Orange, Purple, Red, Royal Blue, Safety Orange, White, Yellow

**Size:** 9"Wx 7.5"H x 5"D

**Imprint Area:** 5"W x 2.5"H On Front Pocket



● ● Cotton



● ● Cotton



● ● Cotton

**7320 St. Helena Wine Tote**

*It's A Cinch To Tote Your Wine In This!*

No need to conceal the label we'll print it on the bag! Spot Clean/Air Dry. Single wine tote with drawstring closure. Natural 10 oz cotton canvas is the ideal backdrop for your logo.

**Color:** Natural, Black

**Size:** 6.25"W x 13"H

**Imprint Area:** 4"W x 9"H On Front or Back

**7321 Rutherford Wine Tote**

*No Paper Sack Please!*

Whether giving wine as a gift or carrying your favorite bottle to the party, this tote is perfect! Spot Clean/Air Dry. Single wine tote with cotton webbing handles. Natural 10 oz cotton canvas.

**Color:** Natural, Black

**Size:** 3"W x 10.5"H x 3"D

**Imprint Area:** 1.5"W x 7"H On Front or Back

**7322 Calistoga Wine Tote**

*Feel Free To Cuddle, There's An Extra Bottle!*

Not sure if the occasion calls for Red or White, just bring both, you'll get it right! Spot Clean/Air Dry. Two-bottle wine tote with wide cotton webbing handles. Natural 10 oz cotton canvas. Soft divider keeps bottles safe.

**Color:** Natural, Black

**Size:** 5.5"W x 10.5"H x 3"D

**Imprint Area:** 3.5"W x 6.5"H On Front or Back

**5018 Flip Top Cooler**

*You'll Flip Over This One!*

Convenience is key with this oversized cooler. The thick padded flip-top opening enables easy entry to the insulated main compartment and seals tight like a cork. Three fully gusseted front zippered pockets mean room galore! Bungee cord details with locks add to the manly appeal of this cooler (as if quick access to your beverage wasn't enough). Zippered main compartment holds 32 cans. Adjustable shoulder strap. 600D poly with PEVA liner.

**Color:** Brown

**Size:** 15"W x 11"H x 11"D

**Imprint Area:** 4"W x 4"H On Front Pocket



**5116 Orbit Cooler**

*You'll Do Flips For This Ellipse!*

This spacious cooler is out of this world! It can be a lunch cooler that would satisfy even the biggest appetite or a great tailgate cooler. Features a zippered main compartment and large front pocket for extra storage. Grommet details, contrasting double-stitch seam detail and binding complete the look. The single, padded carry handle on top plus an adjustable shoulder strap provides flexibility. The height accommodates two 2-liter bottles or 16 cans. 600D poly with PEVA liner.

**Colors:** Gold, Navy, Red, Royal

**Size:** 11.5"W x 12"H x 7"D

**Imprint Area:** 8"W x 3"H On Front Pocket



**5112 Tourney Cooler**

*Feast Your Eyes On This Golfer's Prize!*

The best way to freshen a golfer's obsession and ice down his drinks when he's on the links! This golf bag shaped cooler puts the FUN in functional! With a gusseted front zippered pocket and two gusseted, zippered side pockets, this cooler offers ample space! Fill them with snacks or golf balls or tees. Large, tall main compartment holds 12 of your favorite beverages while the detachable, adjustable shoulder strap allows for easy carrying. The carabiner hook on the back can hold a golf towel or attach the cooler to the cart for steady transport. Fore! Contrasting piping details complete the flawless look. 600D poly with PEVA liner. Spot Clean/Air Dry

**Colors:** Red, Royal

**Size:** 9.25"W x 14"H x 7.5"D

**Imprint Area:** 4" x 5" On Front Pocket



**5118 Titan Cooler**

*Fit For Ambrosia Or Nectar Of The Gods*

In Greek mythology, Titans were giant deities of incredible strength! This plus sized cooler will hold 24 of your favorite beverages, and is as durable as it is functional. 600D poly, with full zip top opening, gusseted front zip pouch and two side mesh pockets hold plenty of extra stuff. Web shoulder strap and padded handle for easy carrying.

**Colors:** Navy, Red, Royal, Orange

**Size:** 12.5"W x 10.5"H x 8"D

**Imprint Area:** 8"W x 4"H On Front Pocket



**5119 Spartan Lunch Cooler**

*Pack A Lunch That Packs A Punch!*

Put this against all other lunch coolers, and this one will stand its ground! This rugged full-sized lunch cooler adds function to form. Its full zip clam shell opening provides easy access to the insulated compartment. Contrast piping adds design and durability. 12 can capacity. 600D Poly.

**Colors:** Black, Orange, Red, Royal

**Size:** 8.5"W x 10"H x 6.5"D

**Imprint Area:** 4.5"W x 4"H



**5113 Maui Insulated Tote**

*It Adds The WOW In Luau!*

The tropics are calling! The laid-back comfort of this double-duty cooler goes perfectly with a lazy day at your favorite resort or while cruising the Caribbean! Even if your typical summer is spent at the backyard pool, the hibiscus print on this cooler will transport you to tropical latitudes. This cooler bag is perfect as a beach bag as its insulated walls keeps it erect and your stuff out of the sand. Dual insulated compartments allow you to separate food and drinks, or use main compartment for beach gear, and

bottom for refreshments. The slim, tapered profile and adjustable shoulder strap ensures comfortable carrying across pavement or sand dunes, while the cut-out carry handles add an elegant touch. 600D poly with PEVA liner is ideal for carrying towels, bathing suits and anything else wet and sandy (or sticky) you need to bring back from the beach. Exterior mesh pocket is ideal for your water bottle or suntan lotion (just don't get the two mixed up!) Truly the beach warrior's bag of choice! Spot Clean/Air Dry

**Colors:** Lime, Orange, Yellow

**Size:** 16"W x 19"H x 6"D

**Imprint Area:** 5.5"W x 3"H On Front Pocket



**5115 Tower Cooler**

*Tower High Above The Rest!*

The tall shape of this cooler accommodates large soda bottles and wine. Two side mesh pockets to hold bottle opener, keys, granola bar anything you want quick access to. Black body with white piping and grey accents create the crisp look of this cooler. Contrasting color panels on side and front pocket. Wide, adjustable shoulder strap allows a perfect fit for everybody. 600D Poly with PEVA liner.

**Colors:** Lime, Orange, Royal

**Size:** 10"W x 12"H x 7"D

**Imprint Area:** 3" x 3" on Front Pocket

**5117 Duet Cooler Mesh Tote**

*Keep The Cool In, While Airing Out The Rest!*

We've combined a generous insulated compartment with an oversized mesh tote for the ultimate beach or family-fun-day tote bag! The bottom zippered portion holds up to 12 cans of your favorite beverage, while the top mesh compartment holds the rest of your gear. The duro-mesh upper makes it easy to see contents, while allowing moisture and sand to escape. This dynamic duo is something to marvel at!

**Colors:** Lime, Red, Royal

**Size:** 20"W x 18"H x 7"D

**Imprint Area:** 4"W x 4"H On Front Pocket





**5111 The Hampton Insulated Tote**

*For Cold Or Wet Things I'm Designed, My Inside Walls Are Fully Lined*

Whether you're bringing beverages down to the beach or bringing sandy, wet items back to your room, this is the perfect tote for the job! Two large, separate, insulated, zippered compartments allow you to organize the content and separate hot from cold, delicate from heavy, or wet from dry! Front open pocket and side mesh bottle-pocket allows quick reach to frequently used items. Features both a wide, adjustable, padded shoulder strap plus cut out carry handles. The slender, vertical design makes this the most comfortable cooler bag to carry. Spot Clean/Air Dry

**Colors:** Black, Red, Royal Blue  
**Size:** 16"W x 19"H x 6"D  
**Imprint Area:** 5.5"W x 3.5"H On Front Pocket



**5045 Picnic/Shopper Basket**

*Insulated Liner For The Portable Diner*

If you're carrying food to grandma's house, having a picnic, browsing fresh produce at the farmers market or stocking up on meats and dairy at the grocery store, this insulated basket is a perfect companion! The aluminum frame of this insulated basket eliminates extra weight while the zippered lid keeps content cool and fresh. The basket is detachable from frame for easy spot cleaning. The basket folds down flat for storage in garage or trunk of the car. Padded carry handle folds down for full access to basket. A front pocket provides added storage and flap on back allows basket to attach to any rolling cooler. 600D poly.

**Colors:** Black, Red, Royal Blue  
**Size:** 15"W x 12"H x 8.5"D  
**Imprint Area:** 6" x 3" On Front Pocket



**5027 Bigfoot Cooler**

*Its Solid Base Keeps Ice In Place*

Combining the best features from both hard-sided and soft-sided coolers, the Bigfoot's upright design makes it handsome and practical. Roomy enough for 2-liter bottles upright, yet its tapered top and slim profile allows it to hang comfortably and close to your body while carrying. Adjustable padded shoulder straps and carry handles provide multiple carry options. A full-sized

front pocket, gator-mouth opening and adjustable straps on the back to hold a blanket, sweater or other gear add to the feature-rich design of this cooler. Most important of all is the rugged, hard bottom that adds stability and strength while ensuring the cooler stands upright. 600D poly with PEVA liner.

**Colors:** Red, Royal  
**Size:** 13"W x 15"H x 9"D  
**Imprint Area:** 6"W x 5"H



**5025 Rally Cooler**

*Chills On Wheels!*

This workhorse of a cooler is fun on wheels! It will hold all the tailgate necessities for a spread that will be the envy of the whole lot. This cooler on wheels features an extra-long telescopic handle. A large main compartment holds 24 cans with additional two side mesh pockets and a zippered, gusseted front pocket for extra storage. Padded carry handles make it a cinch to lift while a bottom board insert adds structure and durability. Cooler folds and ships flat. 420D nylon.

**Colors:** Black, Lime, Orange, Pink, Royal Blue, Yellow

**Size:** 11.5"W x 14"H x 7"D

**Imprint Area:** 4"W x 6"H On Front Pocket



**5026 Sedona Rolling Cooler**

*Make Your Party Portable!*

This premium rolling cooler holds 36 cans, making it a perfect party transporter, whether it's the family picnic or the big game! If you're entertaining a big crowd, this is how you should roll! This back-saving cooler has a telescopic handle and easy-glide wheels. A full-gusset, zippered front pocket provides tons of added space while two side mesh pockets allow quick access to paper goods, or snacks. 600D poly with PEVA liner.

**Colors:** Maroon-Grey, Navy-Tan, Olive-Grey, Tan-Black, Yellow-Grey

**Size:** 13.5"W x 15.5"H x 8.75"D

**Imprint Area:** 4"W x 4.5"H On Front Pocket



**5029 Uptown Lunch Cooler**

*For The Working Bunch Or Student Lunch*

Bring style and function to the table with this double decker lunch cooler. Both compartments are zippered and fully insulated. Front zippered pocket for change, id card or snacks, condiments or utensils. Perfect for work or school. Comfortable carry handle. 600D Poly.

**Colors:** Black, Lime, Pink, Red, Royal, Yellow

**Size:** 9.5"W x 8.75"H x 6.5"D

**Imprint Area:** 3"W x 2.5"H On Front Pocket



**5100 The Lunchbox**

*No Brown Bag Here!*

Your kids have one - now you can too! This one without the cartoon but still very cute! Made of non-woven PP with foil insulation. Drawstring and tab closure with contrasting striped carry handles and top gusset. Large front open pocket for added storage. Spot Clean/Air Dry.

**Colors:** Blue, Lime, Pink, Purple, Red

**Size:** 8.5"W x 7.5"H x 5.5"D

**Imprint Area:** 5"W x 2.5"H On Front Pocket Max one-color screen print. Heat transfer is available for multicolor logos



**7525 Essence Lunch Cooler**

*A Six Pack Super Saver!*

This classic, insulated cooler can keep 6 cans or a healthy sized lunch cold and fresh for many hours. Perfect for school, work, healthcare, trucking, golf tournaments. 600D Poly with vinyl backing.

**Colors:** Black, Navy, Red, Royal

**Size:** 8.5"W x 6.5"H x 6.5"D

**Imprint Area:** 4.5"W x 3"H



**5103 Snack Pack**

*Get Your Snacks In Order!*

Don't just bring your snacks or lunch to school or work, organize them! Two front pockets in contrasting black. A large main compartment holds much more than expected Side mesh pocket for additional storage. Hook and Loop closure is quick and convenient. 210D poly with PEVA liner.

**Colors:** Black, Lime, Navy, Orange, Red, Royal

**Size:** 10"W x 12"H x 4.75"D

**Imprint Areas:** 3" x 3" Front Main Pocket



**5104 Lunch Wave Cooler**

*Catch The Perfect Wave!*

This cooler is a vision with its contoured edge, wide carry handles and grommet details, contrast trim and tab on front pocket! The large main compartment with zipper closure holds a full lunch and snacks too! Front pocket for convenient added storage. 600D poly with PEVA liner.

**Colors:** Black, Red, Royal

**Size:** 13.5"W x 9"H x 6"D

**Imprint Area:** 3"W x 3"H On Front Pocket



**5120 Rhino Lunch Cooler**

*Rugged Like Steel, And Will Upgrade Your Meal!*

This two-toned beauty has upgraded 600D Snow Poly Canvas for a more refined look and maximum durability. Dress your lunch for success with this upscale brown-bagger fit for the corner office! Dual purpose straps can be buckled to carry-handle or shoulder-strap length. Heavy-duty 600D Heather Polycanvas. Full size open front pocket.

**Colors:** Grey

**Size:** 8.5"W x 8.75"H x 5.5"D

**Imprint Area:** 9"W x 2"H On Front Pocket



**5121 Rhino Large Cooler**

*We Searched Far And Wide For An Upscale Cooler With Ruggedized Hide!*

This two-toned beauty is also a beast, with upgraded 600D Snow Poly Canvas for a more refined look and maximum durability. Its creel shaped body is unique, yet classic. Heavy-duty 600D Heather Polycanvas. Full size front pocket with piping detail. Side mesh pocket. Adjustable Shoulder Strap.

**Color:** Grey

**Size:** 12"W x 12"H x 6.5"D

**Imprint Area:** 4.5"W x 4"H



**5035 Tailgate Tub**

*Take Your Drinks To A Whole New Level!*

We've raised the bar by putting this cooler tub on a stand. A huge insulated cooler tub fits atop a tall stand for easy access and display of drinks. A zippered, insulated top with a quick-access lid means drinks will stay cool longer. A removable zippered liner adds durability and facilitates easy cleaning. The tub pulls off frame in an instant for easy storage and portability and stows away in a carry bag. 600D poly with PEVA liner.

**Color:** Black

**Size:** 18" diameter x 13¾"H (tub). Total height: 33"H

**Imprint Area:** 3"W x 3"H On Top Lid

**Optional Imprint Area:** Corner imprint (available on any or all 4 corners — default location is front left if not stated).

Add \$1.25(v) per color/per location. Max 2 color screen print.

Heat transfer available for multicolor logos of 3 colors and more.



Zippered, Insulated Top



Quick Access Lid

**5102 The Gourmet**

*Don't Be A Drag When You Brown Bag!*

How do you make strawberry jelly and peanut spread look like something from Panera Bread? You pack in this trendy lunch tote! It may not taste any better, but everyone at the office will think it does!

Snap closure and side ties keep contents in place and allows you to customize the size and shape to fit your needs.

**Colors:** Black, Lime, Red, Royal

**Size:** 16"W x 12"H x 5.5"D

**Imprint Area:** 6"W x 5"H On Front Pocket



**5007 Foldaway 12 Pack Cooler**

*Large Or Small - Works Either Way*

One large zippered front pocket with two accessory pockets. Features an adjustable wide shoulder strap for comfortable carrying for tall and short. Cooler collapses flat and secures with hook and loop closure for easy storage. Bottom board adds structure and strength. 600D poly with PEVA liner.

**Colors:** Black, Red, Royal

**Size:** 12"W x 9"H x 9"D

**Imprint Area:** 5"W x 2.5"H On Front Pocket



**5009 3 Can Cooler Tube**

*Tee Off - Drinks Are Cold Thru The 18th Hole!*

This mini cooler holds 3 cans, 2 bottles, or 1 wine bottle, and keeps them cold for hours. Also can be used for tennis or golf balls, magazines, newspaper, etc. Ideal for golf or tennis tournament giveaway item. Three-can cooler tube clips onto golf bag or cart, stroller, wheel chair etc. Adjustable shoulder strap for convenience. Features thick insulation with PEVA liner and a zippered closure. 600D poly.

**Colors:** Black, Royal

**Size:** 15"L x 3.5"D

**Imprint Area:** 8"W x 2"H On One Side





**9014 Outback Blanket**

*From Listening To Bands, To Warmth In The Stands*

As rugged as the Australian Outback, this blanket has a water resistant black shell and a soft, fleece lining to keep the moisture out and the warmth in. Use as a seat cushion while folded, or open for the perfect picnic or concert blanket. Every car should have a blanket in the trunk, and this is the perfect one. Great for auto industry or safety programs.

**Colors:** Black, Blackwatch, Burgundy, Camouflage, Cinder Grey, Hunter, Navy, Red Buffalo, Red, Royal, White Buffalo

**Size:** 50”L x 60”W

**Imprint Areas:** 6”W x 4”H On Front



Water Resistant Shell

**9001 Sweatshirt Blanket**

*Warm Up For The Game!*

The ultimate stadium blanket with its extra-large imprint area! The warm, comfy 12 oz. sweatshirt material of this blanket screams “take me to the ballgame!” Use it as a seat cushion, team banner or to keep warm.

**Colors:** Black, Heather Grey, Hunter Green, Navy, Royal Blue

**Size:** 50”W x 60”L

**Imprint Area:** 9”W x 12”L Bottom Center



**9017 Saddle Up Blanket**

*The Fleece Throw For On-The-Go*

Performance, portability, and price collide with this handy fleece blanket. It easily rolls up and is secured by a matching flap closure with full length pocket and carry strap, allowing for additional decoration options like screen print and heat transfer. Whether you are riding the range or watching the game, this is the blanket for you. 180 gsm polar fleece with 600D poly flap and decorator pocket.

**Colors:** Black, Grey, Navy, Red, Royal

**Size:** 47”W x 53”L

**Imprint Area:** 6”W x 2.5”H on Front Pocket



**9020 Coral Fleece Blanket**

*With Its Cozy Warmth And Velvety Hand, All It Needs Is That Perfect Brand*

The softest, most luxurious fleece on the market! This micro-plush blanket is thick yet light as air. Edges are trimmed with tricot binding. Includes a clear vinyl, zippered case with pocket. Pocket can be inserted with custom printed materials or other inserts for added impact.

**Colors:** Black, Burgundy, Camel, Cream, Cocoa, Forest, Grey, Navy, Purple, Red, Royal Blue

**Size:** 50"W x 60"L

**Imprint Area:** Embroidery Only on Bottom Corner of Blanket



**FP 180 Promotional Fleece**

*Bundle Up Without Spending A Bundle.*

When price is the deciding factor, this fleece throw is the way to go. This fleece blanket can keep out the cold, and keep in the warmth. Great for travel.

**Colors:** Black, Burgundy, Cream, Forest, Grey, Navy, Purple, Red, Royal, Yellow

**Size:** 50"W x 60"L

**Imprint Area:** Embroidery Only on Bottom Corner  
Blanket straps are sold separately.



**FP 280 Polar Fleece**

*Medium Weight Sure Feels Great.*

This mid-weight throw offers a thicker shell for even greater thermal protection. Whether at the ballgame, or on your couch, this blanket fits the bill. Add the hook and loop carry handle and straps for the perfect portable throw.

**Colors:** Black, Brown, Burgundy, Camel, Cream, Forest, Grey, Heather, Navy, Orange, Pink, Purple, Red, Royal, Yellow

**Size:** 50"W x 60"L

**Imprint Area:** Embroidery Only on Bottom Corner  
Blanket straps are sold separately.



**9026 Alpaca Blanket**

*As Warm And Toasty As The Andean Drylands, Even In The Peruvian Highlands!*

This deep pile fleece has frosted tips that are reminiscent of snowcapped mountains, giving this blanket an iridescent glow! It is as beautiful as it is warm!

**Color:** Gray

**Size:** 50"W x 60"L

**Decorating Area:** Embroidery only in bottom right corner

Packaged with a grey gift ribbon and card



**9003 Sherpa Fleece Blanket**

*Soft As Cotton, Warm As Wool!*

This soft-as-a-lamb throw looks rugged enough for a man, but luxurious enough for a woman. Double layered blanket of mink fleece with sherpa fleece liner. Features a hidden zippered embroidery pocket in corner for embroidery. Vinyl zippered bag included.

**Colors:** Black, Burgundy, Camel, Chocolate, Cream, Forest Green, Grey, Grey/Cream Buffalo, Navy, Plum, Red Buffalo, Red, Royal, Sienna, Royal Buffalo, Black/Grey

**Size:** 50"W x 60"L

**Decorating Area:** Embroidery only in bottom right corner

Add an attractive GIFT RIBBON! Only \$3.33 R

**Ribbon Colors:** White, Red, Burgundy, Royal, Hunter, Purple, Silver, Metallic Gold



**9013 Super Sherpa**

*Soft As Cotton, Warm As Wool!*

Who says too much of a good thing is wasted? We took the same luxurious micro-mink and Sherpa fleece throw and super-sized it! It is so amazingly warm and comfortable that you may not want to share it, but now you can. Double layered blanket of mink fleece with sherpa fleece liner. Features a hidden zippered embroidery pocket in corner for embroidery. Vinyl zippered bag included.

**Colors:** Black, Camel, Chocolate, Grey, Navy, Red, Royal

**Size:** 60"W x 72"L

**Imprint Area:** Embroidery Only on Bottom Corner

Add an attractive GIFT RIBBON! Only \$3.33 R

**Ribbon Colors:** White, Red, Burgundy, Royal, Hunter, Purple, Silver, Metallic Gold





**9022 Southern Plush Fleece**

*Simply Heaven On Earth!*

Put a little filet mignon with your couch potato. Ultra-plush mink touch fabric. Antipill and hypoallergenic. Finished self-hem. Packed in a vinyl bag.

**Colors:** Black, Burgundy, Cream, Forest, Grey, Navy, Purple, Red, Royal

**Size:** 50"W x 60"L

**Imprint Area:** Embroidery Only on Bottom Corner of Blanket. Call for embroidery pricing



**9173 Plush Robe**

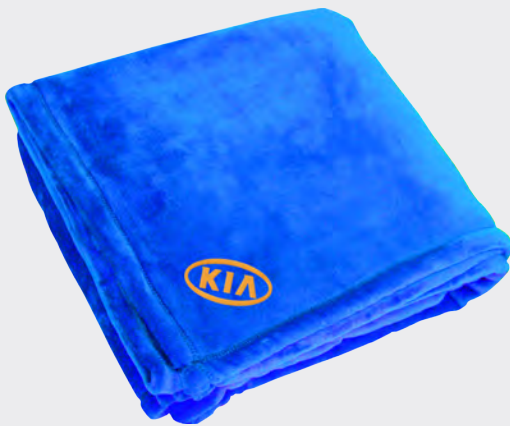
*Like Being Enshroud In A Wispy White Cloud.*

Ultra-plush mink-touch fabric feels so good you better plan on being late for work! Anti-pill and hypoallergenic. Features full length shawl collar, belt loops with matching belt and two front pockets. Includes a clear vinyl case with pocket.

**Colors:** Navy, White

**Size:** 48"L

**Imprint Area:** Embroidery only on front left chest. Call for embroidery pricing.



**9025 Southern Plush XL**

*We Put The PLUS In PLUSH!*

Plush just got even more plush with our new extra-large version of the Southern Plush blanket. Big enough to share. Same ultraplush mink touch fabric as our original size. Packed in clear vinyl carry case.

**Colors:** Black, Cream, Grey, Navy, Royal

**Size:** 60"W x 72"H

**Imprint Area:** Embroidery only on bottom corner of blanket. Call for embroidery pricing.

**9027 Himalayan Throw**

*Just Add The Fireplace, Toddy And A Good Book!*

This luxurious throw takes cuddling up on the couch to a new level! Its velvety soft, faux-fur outer shell combined with the warm-as-wool Sherpa fleece inner liner makes for our warmest blanket yet!

**Color:** Grey

**Size:** 50"W x 60"L

**Decorating Area:** Embroidery only in bottom right corner  
Packaged with a grey gift ribbon and card



**9101 CQ/WQ Fingertip Towel Fringed**

*A Little Frayed Around The Edges!*

Don't be a-frayed to use this for your next promotion! One side velour with terry loop on other side. Fringed ends. 100% Cotton. 1.3 lbs. per dozen average weight. Optional grommet and hook available.

**Colors:** Azalea, Black, Forest Green, Gold, Hot Pink, Light Blue, Light Pink, Lime, Maroon, Natural, Navy, Orange, Purple, Red, Royal Blue, White, Yellow

**Size:** 11"W x 18"L

**Imprint Area:** 8"W x 12"H



Add Grommet and Hook \$0.48(v).

**9115 WQ Fitness Towel 24 X 42**

*Don't Just Bear Witness To Physical Fitness.*

When it comes to fitness towels, this one is in shape to do the heavy lifting. When a hand towel is too small, and a bath towel is too big, this is just right! Hemmed ends. 7 lbs per dz. average weight. 100% cotton velour on one side, terry loop on the other side.

**Color:** White

**Size:** 24"W x 42"L

**Imprint Area:** 17"W x 17"L



Add Grommet and Hook \$0.48(v).

**9102 CQ/WQ Hand Towel Hemmed**

*From Team Flag To Your Golf Bag.*

This hand towel is perfect whether you're cheering your club or cleaning your clubs. 100% cotton one side velour with terry on other side. 2.5 lbs. per dozen average weight. Optional grommet and hook available.

**Colors:** Azalea, Black, Forest Green, Gold, Hot Pink, Light Blue, Light Pink, Lime, Maroon, Natural, Navy, Orange, Purple, Red, Royal Blue, White

**Size:** 16"W x 25"L

**Imprint Area:** 12"W x 14"H



Add Grommet and Hook \$0.48(v).

**9106 CQ/WQ Fingertip Towel Hemmed**

*My Finished Edges Can Clean Your Wedges.*

Can be used to wave in the stands or on the course to wipe your hands. One side velour with terry loop on other side. Hemmed ends. 1.3 lbs. per dozen average weight. 100% Cotton. Optional grommet and hook available.

**Colors:** Azalea, Black, Forest Green, Gold, Hot Pink, Light Blue, Light Pink, Lime, Maroon, Natural, Navy, Orange, Purple, Red, Royal Blue, White, Yellow

**Imprint Area:** 8"W x 12"H



Add Grommet and Hook \$0.48(v).

**9114 WQ Fitness Towel 11 X 44**

*Don't Just Bear Witness To Physical Fitness.*

Never let them see you sweat. Especially with this tailored Fitness Towel! It will absorb the moisture, without absorbing your budget. 100% Cotton one side velour with terry on the other side. Hemmed ends. 4.0 lbs. per dozen average weight. White only.

**Color:** White

**Size:** 11"W x 44"L

**Imprint Area:** 7"W x 17"L



Add Grommet and Hook \$0.48(v).

**7602 CQ/NQ Medium Length Apron w/ Pouch**

*From Image Reflector To Food Stain Protector.*

Medium length bib-style apron with front pouch. 7.5 oz. Twill, Cotton/Poly fabric, full width pouch 8 inches deep with three compartments, binding trim. 1 inch wide extra-long waist ties. 1 inch wide neck strap with sewn-on buckle for adjustable fit.

**Colors:** Black, Forest Green, Navy, Natural, Red, Royal, White

**Size:** 22"W x 24"H

**Imprint Area:** 8"W x 8"H On Front Chest



**7606 CQ/NQ Bistro Apron**

*Are You Ready To Order?*

7.5 oz. Twill, Cotton/Poly fabric. Full length apron. Two patch pockets at waist level, binding trim. 1" wide neck strap with sewn-on buckle for adjustable fit.

**Colors:** Black, Forest Green, Natural, Navy, Red, Royal Blue, White

**Size:** 22"W x 30"H

**Imprint Area:** 8" x 8" On Front Chest



**7603 CQ/NQ Butcher Apron**

*Where's The Beef?*

Butcher style apron (no pockets). 7.5 oz. Twill fabric, full length with plain front. Generous cut, self-fabric neck strap. Extra-long waist ties can wrap around and tie in front. Cotton/Poly.

**Colors:** Black, Forest Green, Maroon, Natural, Navy, Red, Royal Blue, White

**Size:** 28"W x 34"H

**Imprint Area:** 8"W x 10"H On Front Chest

Color selection bar: black, forest green, maroon, natural, navy, red, royal blue, white.

**7605 CQ/WQ Café Apron**

*This Adds Good Taste Around Your Waist!*

7.5 oz. Twill, Cotton/Poly fabric. Heavy-duty waist apron. Pouch divided into three equal compartments.

**Colors:** Black, Forest Green, Maroon, Natural, Navy, Royal Blue, Red, White

**Size:** 24"W x 12"H

**Imprint Area:** 4.5"W x 4.5"H On Front Center Pocket or Above Pockets



**7604 NQ Economical Waist Apron 2P**

*From Food Sales To Carrying Nails.*

6 oz. Cotton fabric, pouch divided into 2 equal compartments at waist.

**Color:** Natural

**Size:** 24"W x 12"H

**Imprint Area:** 5.5" x 3" On Right or Left Pocket



**7608 NQ Economical Waist Apron 3P**

*When Two Pockets Just Won't Do.*

Basic waist apron. 6 oz. Cotton fabric, pouch divided into 3 equal compartments.

**Color:** Natural

**Size:** 24"W x 12"H

**Imprint Area:** 5.5"W x 3"H On Front Pocket

**7607 CQ/NQ Wide Apron**

*Protection Designed For In Front Or Behind.*

Full length wide apron. 7.5 oz. Twill fabric, full length with plain front. Generous cut, self-fabric neck strap. Extra long waist ties can wrap around and tie in front. Cotton/Poly. Wide Bib for large printing area.

**Colors:** Black, White

**Size:** 28"W x 34"H

**Imprint Area:** 10" x 10" On Front Chest

Color selection bar: black, white.

**FPM-39 Pencil Umbrella**

*Get The Lead Out!*

When ultimate portability is your quest, look no further than this pocket-sized powerhouse. 39" open and 9" closed make this little marvel your best travel companion. Whether in your purse, pocket or glove box, don't leave home without it. Small, slim design with ultralight aluminum shaft and matching sleeve. 6 panels.

**Colors:** Black, Lime, Mango, Orange, Pink

**Size:** 39" Arc, Closed 9"

**Imprint Area:** On panel 6"W x 5"H or Sleeve 3"W x 1"H



**FFR-39 Mini Umbrella**

*Rectangular Fashion!*

Proof, once again, that good things come in small packages (or sleeves). Rectangular shape with accent handle umbrella. Matching sleeve. 6 panels.

**Colors:** Pink, Purple, Red, Royal Blue

**Size:** 39" Arc, Closed 9"

**Imprint Area:** On panel 7"W x 5"H or Sleeve 3"W x 1"H



**PM-43 Manual Open Umbrella**

*Simple, Functional, Budget-Friendly!*

Less is more with this no-frills folding umbrella. With the same generous size as our best-selling FO-43 but without the auto-open feature, it is sure to satisfy the budget minded. Metal shaft and ribs. Manual open with plastic ribbed handle and matching sleeve.

**Colors:** Black, Gold, Navy, Orange, Red, Royal

**Size:** 43" Arc, Closed 13.5"

**Imprint Area:** On panel 6"W x 6"H or Sleeve 3"W x 1"H



**FPR-43 Pink Ribbon Umbrella**

*Support The Cause And Get Oohs And Aahs*

Show extra support for Breast Cancer with this “surprising” pop-up automatic. When rain falls on the outside of this pink umbrella, the breast cancer awareness ribbon “magically” appears all over as a step and repeat, all-over print. We’ve taken our most popular umbrella size and design, and made it even better. The wet-print ribbons are only visible when wet, while a one panel silk-screened logo can be visible all the time. Perfect for donor gifts, fundraisers or just to honor a loved one. Auto opening folding umbrella with matching sleeve. 8 panels.

**Color:** Pink

**Size:** 43” Arc, Closed 15.5”

**Imprint Area:** On panel 6”W x 6”H or sleeve 4”W x 1”H

**Note:** The wet print will appear as a darker shade of the fabric color and provide a subtle, tone-on-tone look. A darker fabric will usually show less contrast than a lighter fabric (except white). Fine lines and details will not be as visible as bigger, bolder patterns.



Ribbons Show Up Only When Wet

**FO-43 Pop Up Automatic**

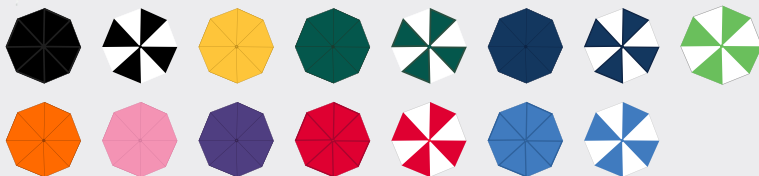
*A Best Seller Year After Year!*

Portability, pop-up, and price make this the best overall value in our line. It's our best seller year after year. Automatic open folding umbrella with plastic grip handle and wrist cord. Matching sleeve. 8 panels.

**Colors:** Black, Black-White, Gold, Hunter, Hunter-White, Lime, Navy, Navy-White, Orange, Pink, Purple, Red, Red-White, Royal, Royal-White

**Size:** 43” Arc, Closed 15.5”

**Imprint Area:** On panel 6”W x 6”H or Sleeve 4”W x 1”H



**FOW-48 Wooden Handle Auto**

*Folding Umbrella With A Classic Touch!*

This over-sized folding umbrella is perfect for any situation. It's 48” arc, auto-open feature, and deluxe wood handle with leather wrist cord make this a clear favorite with someone of distinguished taste and style. Matching sleeve.

**Colors:** Black, Navy

**Size:** 48” Arc, Closed 17”

**Imprint Area:** On panel 7”W x 7”H or sleeve 4”W x 1”H



**AOC-48 Auto-Open/Close Umbrella**

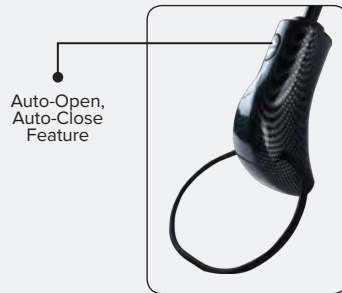
*One Button Press, And Up It Goes, A Second Time For Auto-close!*

No details are overlooked on this premium umbrella! The soft feel and matte finish of the pongee material lends a classic touch. The auto-open, auto-close feature provides quick cover and retreat during a downpour while the unique pattern and shape of the handle provides a distinguished look. This one should be required issue with any new car purchase! Matching sleeve.

**Colors:** Black, Lime, Orange, Red, Royal

**Size:** 48" Arc, Closed Length 12.5"

**Imprint Area:** On panel 6"W x 4"H or sleeve 3"W x 1"H



**FO-48 Auto Open Midsize Umbrella**

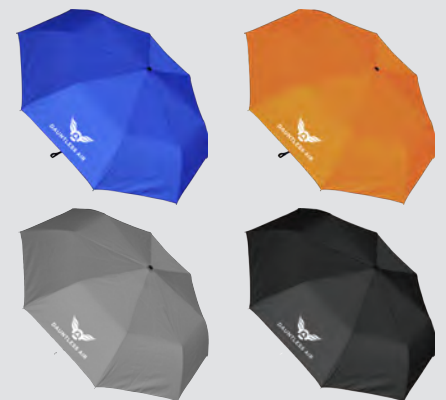
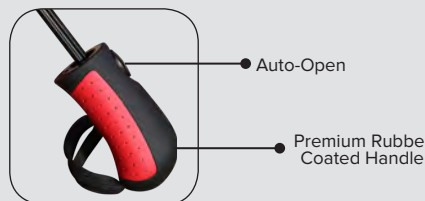
*With A Size That Offers Peace-Of-Mind, The Folding Umbrella's Now Redefined.*

A modern look with portability and coverage. We've blended form and function to produce perhaps our most versatile umbrella. The perfect commuter's companion. Folding Telescopic, Auto-Open. 190T Nylon. Color Accents on Premium Rubber Coated Handle. Matching Cuff Sleeve.

**Colors:** Black, Grey, Orange, Red, Royal

**Size:** 48" Arc, 13" Closed

**Imprint Area:** On panel 6"W x 4"H or sleeve 3"W x 1"H



**FO-60 Folding Golf Umbrella**

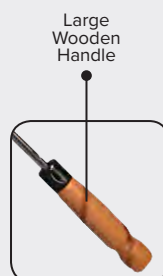
*The Business Companion!*

Our best-selling golf umbrella! Automatically opens to a roomy 60" canopy yet folds down to a manageable 23". Its large wooden handle provides a sturdy, comfortable grip. Matching sleeve with strap.

**Colors:** Black, Black-White, Hunter, Navy, Navy-White, Red-White, Royal-White

**Size:** 60" Arc, Closed 23"

**Imprint Area:** On panel 8"W x 8"H or sleeve 10"W x 1.5"H



**SF-48 Safety Umbrella**

*With Weather At Its Worst, We Still Put Safety First!*

This ultralight, mid-size umbrella has style, yet can be seen for a mile! It's trimmed with a high-optic reflector strip that can be seen day or night. Perfect for the downtown walkers, school crossing guards, safety programs, airlines and construction. 48" Arc, Silver matte finish aluminum shaft. EVA foam handle. Auto open. No sleeve.

**Color:** Black

**Size:** 48" Arc, Closed 34"

**Imprint Area:** 8"W x 5.5"H

Reflective Borders



Aluminum Shaft

Eva Foam Handle

**RFO-43 Optic Umbrella**

*Its Reflective Strip Is Ultra-bright, And Highly Visible Both Day And Night.*

This one stands out in our line, as well as in a crowd, with its high optic reflective strip, making it highly visible, and highly desirable. Auto-Open. 190T Nylon w/Reflective Band. Plastic Grip Handle with Wrist Strap. Matching Cuff Sleeve.

**Colors:** Black, Orange, Royal

**Size:** 43" Arc, 15.5" Closed

**Imprint Area:** 6"W x 4"H On panel or Sleeve 4"W x 1"H



High Optic Reflective Strip

Plastic Grip Handle with Wrist Strap

**FGR-56 Jumbo Folding Umbrella**

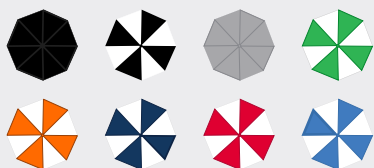
*When It Comes To Rain Protection ... Size Matters.*

This folding umbrella provides portability and productivity; giving you a jumbo canopy when needed most, but stores away nicely when not in use. Auto-Open with Fiberglass Ribs. 190T Nylon. Black Rubber-Coated Handle. Matching Sleeve with Shoulder Strap.

**Colors:** Black, Black/White, Grey, Lime Green/White, Orange/White, Navy/White, Red/White, Royal/White

**Size:** 56" Arc, Closed 22"

**Imprint Area:** On panel 8"W x 7"H or Sleeve 10"W x 1"H



Black Rubber-Coated Handle



**NAI-48 School Golf Umbrella**

*The Fundraiser Of Choice!*

When size and budget are all that matter, this is a clear favorite. Its dark wood handle, steel shaft, and auto-open feature, make this umbrella the best value in a golf-size umbrella. Its low price and 6 color options make it an ideal fundraiser item. No sleeve.

**Colors:** Black, Black/White, Hunter/White, Navy/White, Red/White, Royal/White

**Size:** 48" Arc, Closed 33"

**Imprint Area:** On panel 7"W x 7"H



**AF-56 Auto Open Fiberglass Golf Umbrella**

*It's Staying Dry You'll Be Hopin', When You Pop Me Open!*

We've combined the durability of fiberglass, the convenience of auto-open, and the value of a sharp price to create this new favorite golf umbrella! With a comfortable, contour-grip handle, fiberglass shaft and ribs, it is sure to feel at home in your hand. 56" Arc, auto-open. No sleeve.

**Colors:** Gold, Lime, Red, Royal

**Size:** 56" Arc, Closed 35"

**Imprint Area:** On panel 8"W x 8"H



**NMI-60 Promotional Golf Umbrella**

*Maximum Size, Minimum Price!*

Budget-friendly for the bogie golfer. Its steel shaft and contoured resin grip keep this oversized umbrella casually priced while assuring quality and durability. Steel ribs for strength. Manual open. Matching sleeve.

**Colors:** Black, Black-White, Hunter, Hunter-White, Navy-White, Pink-White, Red-White, Royal-White, White

**Size:** 60" Arc, Closed 38.5"

**Imprint Area:** On panel 8"W x 8"H or Sleeve 10"W x 1.5"H





**NFI-62 Fiberglass Shaft Golf**

*The Perfect Addition To Your Golf Bag!*

This modern marvel is our best selling "stick" golf umbrella due to its modern features and incredible value. Super-flex fiberglass ribs and shaft with a pistol-grip handle make this a player and fan favorite alike. Windproof spring and matching sleeve.

**Colors:** Black, Black/White, Hunter/White, Navy/White, Red/White, Royal/White

**Size:** 62" Arc, Closed 38.5"

**Imprint Area:** On panel 8"W x 8"H or sleeve 10"W x 1"H



**HU-62 The Hurricane**

*The Ultimate Storm Shelter!*

The name says it all with this wind blocker. Its vented double canopy construction adds extra durability and maximum ventilation. Its fiberglass shaft and pistol-grip handle make it the best choice for the golfer that doesn't know when to come in from the rain. (You know who we're referring to). Matching sleeve.

**Colors:** Black, Black-White, Hunter-White, Navy-White, Red-White, Royal-White

**Size:** 62" Arc, Closed 38.5"

**Imprint Area:** On panel 8"W x 6"H or sleeve 10"W x 1"H



**FHU-60 Folding Hurricane**

*Air Flows Through, Rain Doesn't!*

Same size and design as our best-selling folding golf umbrella, but adds vents for better air circulation and a clear vinyl sleeve. Withstands gusts of up to 55 miles per hour. Vented, auto open, folding golf umbrella with oversize wood handle and matching sleeve.

**Colors:** Black, Red-White, Royal-White

**Size:** 60" Arc, Closed 23"

**Imprint Area:** On panel 8"W x 8"H or sleeve 10"W x 1.5"H



**GPM-60 The Punch Golf Umbrella**

*We Spiked This Punch With Color!*

This 60" golf umbrella has a punch of color to make your logo pop! Accents of color include shaft, ribs, handle, and tipped fabric edge, and add eye-turning drama to this plus-sized parasol. EVA foam color coordinated handle. Manual open. Sleeve with matching color cuff.

**Colors:** Lime, Red, Royal

**Size:** 60" Arc, Closed 39"

**Imprint Area:** On panel 8"W x 8"H or Sleeve 10"W x 1"H



**SQ-60 Square Golf Umbrella**

*Lightest Weight Golf Umbrella*

We've put a square peg (umbrella) into a round hole (sleeve) with our newest addition to our golf collection. This eye-catching behemoth has a 60" arc, fiberglass shaft and ultra soft EVA handle. Its vents add form to function (when open) offering a checkerboard-like pattern. Its square shape makes it easy to securely lay on its side (like a lean-to awning) for shade or privacy at the beach or on picnics. Unique square shape provides maximum logo exposure! The lightest golf umbrella available. Matching sleeve. Manual open.

**Colors:** Lime-Black, Maroon-Gray, Orange-Black, Red-Black, Royal-Black, White-Black, Yellow-Black

**Size:** 60" Arc, Closed 38.5"

**Imprint Area:** On panel 12"W x 4.5"H or sleeve 10"W x 1"H



**MO-62 The Monsoon Golf Umbrella**

*It's Only A Matter Of Time Before The Storm Comes... But We've Got You Covered!*

This plus-sized sturdy canopy can withstand most any deluge, and keep you (and a friend) safe and dry. Vented Panels. Heavy-Duty Fiberglass Ribs. Fiberglass Shaft, Manual Open. 190T Nylon. Features a premium Pistol Grip rubber handle. Matching Sleeve with Shoulder Strap

**Colors:** Grey/Black, Hunter/White, Orange/White, Red/White, Royal/White

**Size:** 62" Arc, Closed 38.5"

**Imprint Area:** On panel 8"W x 6"H or sleeve 10"W x 1"H



**GSG-60 The Galaxy Golf Umbrella**

*Shines Bright With An Eclipse Of Color*

This eye-catching golf umbrella has a coated fabric to block out the sun as well as the rain. Silver coated on 6 top panels with 2 opposite panels in contrasting color. 60" arc with fiberglass shaft and ribs. A beautiful work horse of an umbrella as home on the pavement as the red carpet! Premium rubber pistol-grip handle. Manual open. Matching color sleeve.

**Colors:** Black/Silver, Red/Silver, Royal/Silver

**Size:** 60" Arc, Closed 38"

**Imprint Area:** On panel 8"W x 8"H or Sleeve 10"W x 1"H



**CU-48 Clamp On Umbrella**

*Provides Shade Or Shelter!*

One of the best kept secrets in the umbrella world! It is a perfect add-on accessory for any folding chair. Its patented clamp fastens quickly and securely to every chair in our line, as well as baby strollers and wheel chairs, to allow for hands-free shade and shelter. Bendable neck allows you to position the umbrella in any direction and angle to maintain optimal shade. The quick release feature of the clamp makes it a snap to remove and fold up. (Leave the clamp in place for next use). Be the envy of every soccer mom on the sidelines, or stay shady cool at the beach with this handy accessory. We guarantee you'll have it made in the shade with the CU-48! No Sleeve.

**Colors:** Gold-White, Red-White, Royal-White, Yellow-White

**Size:** 48" Arc, Closed 33"

**Imprint Area:** On panel 7"W x 7"H



**BU-66 Playa Del Sol Beach Umbrella**

*Let The Whole Beach See Your Brand When It's Stuck Into The Sand.*

You'll be made-in-the-shade when you pop open this plus-sized sun blocker! Perfect for resort rentals, or personal use at the beach, picnic, or sporting event. 8 Panels with Valance. Two Section Pole 22/25mm. 210D Oxford. Matching Carry Case with Shoulder Strap. Total height: 6 ft. tall.

**Colors:** Red/White, Royal/White, Yellow/White

**Size:** 66" Arc, Closed 39.5"

**Imprint Area:** 13"W x 10"H

**AQ 111 The Lifesaver**

**Adult Lightweight (Blank Poncho) With Printed Pouch**

1.1 mil thick polyethylene. 80" x 50". ADULT size. Heat sealed sides hooded. Packed in printed clear PVC case.

**Colors:** Clear, Royal, Yellow, Black

Imprint on case only (Max 2 colors): 2.5"W x 4"H

Packed in clear PVC case if imprinted. If shipped blank, this item comes folded, but not packaged in case (case packed in same carton as ponchos). Additional fee to insert blank ponchos into pouch: \$.63 (V)



**AQ 112 The Pocket Poncho**

**Pocket Poncho**

1.1 mil thick polyethylene. 80" x 50". ADULT size. Heat sealed sides. Hooded. Packed in clear poly zip lock package. Case is 4"W x 6"H.

**Colors:** Clear, Royal, Yellow, Black

Packed in clear poly zip-lock package (available blank only).



**AQ 118 The Storm Front (Youth)**

**Regular Weight Poncho (Youth)**

70" x 41" youth (generally fits 4' to 5' tall). 4.5 mil thick PVC material. Hooded. 3 side snaps on each side. Finished edges. Packed in a matching carrying case with snap closure if imprinted. Case is 9.5"W x 7"H.

**Colors:** Clear

**Imprint Area:** 4.5" x 4.5" for left chest only. (for full front or back imprint, please see item AQ109). Max 2 color imprint on poncho.

**Imprint On Case:** 6" wide x 4.5" high imprint area on package. Max 2 color imprint on case.

Packed in a matching case with snap closure if imprinted. If shipped blank, this item comes folded, but not packaged in case (case packed in same carton as ponchos). This item is intended for youth age 13 years and up and not for use by children 12 years and younger.

Additional fee to insert blank ponchos into pouch: \$.63 (V).



**AQ 109 Downpour**

**Heavyweight Poncho (Adult)**

80" x 52" adult. 8 mil thick PVC material. Drawstring hood. Very strong and durable thickness. Neck area features a gusset for added comfort and a snap closure. 2 side snaps on each side. Finished edges. Packed in a matching carrying case with drawstring and snap closure. Case is 13.75"W x 10.75"H.

**Colors:** Clear, Royal, Red, Hunter, Gold, Navy, Black, Burgundy, Cardinal Red

**Imprint Area:** 11" x 11" imprint area for center front and/or center back. 4.5" x 4.5" imprint area for left chest. Max 2 color imprint on poncho.

**Imprint On Case:** 10"W x 7.5"H". Max 2 color imprint on case.

Packed in a matching case with snap closure if imprinted or blank.



**AQ 103 The Optic Poncho**

**Standard Weight Color Block Poncho**

Standard weight. ADULT size. Color block design with metallic silver hood and shoulders. 4.5 mil thick PVC material. 80" x 52" open size. Hooded. Finished edges with 2-snap closure. Packed in matching case when poncho is imprinted. Case is 9.5"W x 7"H

**Colors:** Silver/Royal, Silver/Hunter, Silver/Navy

**Imprint Area:** 4.5" x 4.5" for left chest only. (for full front or back imprint, please see item AQ109). Max 2 color imprint on poncho.

**Imprint On Case:** 6" wide x 4.5" high imprint area on package. Max 2 color imprint on case.

Packed in a matching case with snap closure if imprinted. If shipped blank, this item comes folded, but not packaged in case (case packed in same carton as ponchos). Additional fee to insert blank ponchos into pouch: \$.63 (V).



**AQ 101 The Storm Front**

**Regular Weight Poncho**

80" x 52" adult. 4.5 mil thick PVC material. Hooded. Finished edges with snap closure. Packed in a matching carrying case with snap closure if imprinted. Case is 9.5"w x 7"H.

**Colors:** Clear, Royal, Red, Hunter, White, Purple, Gold, Orange, Navy, Black, Burgundy, Cardinal Red, Safety Yellow

**Imprint Area:** 4.5" x 4.5" for left chest only. (for full front or back imprint, please see item AQ109). Max 2 color imprint on poncho.

**Imprint On Case:** 6"W x 4.5"H. Max 2 color imprint on case.

Packed in a matching case with snap closure if imprinted. If shipped blank, this item comes folded, but not packaged in case (case packed in same carton as ponchos). Additional fee to insert blank ponchos into pouch: \$.63 (V)



**105 Billboard Lounger**

*Huge Imprint, Low Cost!*

Our top selling chair has an imprint area three times larger than other competitors' chairs! The billboard imprint will ensure maximum exposure while the double-layer back guarantees double the comfort. With dual cup holders and matching color carry bag this chair is the best value around. 300 lb. capacity. 600D poly.

**Colors:** Black, Hunter, Navy, Red, Royal Blue, Tan

**Size:** 20.5"W x 18"D x 35"H (overall width including armrests:31.5")

**Imprint Area:** 10"W x 10"H. Standard imprint area is on the chair front.

**Optional Imprint Areas** are available on chair back - 10"W x 10"H, or bag - 10"W x 5"H. Imprint on standard location unless otherwise specified on order



**130 The Spectator**

*A Single Seater Budget Beater!*

Small chairs, tall chairs, padded chairs, large chairs - just when we thought we had them all, we saw the need to add one more. Two cup holders gives you an extra pocket for more than just drinks. Imprint on front or back of head rest. 600D poly with matching color 210D poly carry bag. 300 lb capacity.

**Colors:** Black, Navy, Orange, Red, Royal

**Size:** 20"W x 20"D x 33 1/2"H (overall width including armrests: 31.5")

**Imprint Area:** 10"W x 3"H Standard imprint area is on the chair front.

**Optional Imprint Areas** are available on chair back 10"W x 3"H or bag 10"W x 5"H. Imprint is on standard location unless otherwise specified on order



**116 Beach Chair**

*Sand In Your Toes & Fun In The Sun!*

Its vibrant colors and laid back design make this easy to find at the beach, and hard to leave. It's low slung and reclined, making it perfect for sun-baking or nap taking! The mesh seat panel allows water and sand to pass through while providing ventilation and comfort. Folds into a matching carry bag (which also fits the optional Clamp-on umbrella). You'll be the envy of the beach as you lounge away in this chair while sipping Mai Tai's until sunset.

(Can also be used indoors as the ultimate portable gaming chair). Weight limit 225 lbs.

**Colors:** Lime, Orange, Red, Royal, Yellow

**Size:** 22"W x 27"H x 9"D

**Imprint Area:** 9"W x 9"H On back of chair below headrest

**Optional Imprint Area** is available on bag - 10"W x 5"H. Imprint on standard location unless otherwise specified on order



**119 Contour Chair**

*Refresh Yourself On Non-Slip Mesh*

This chair has it all rugged good looks, a superfine mesh ventilated back, and a deeper seat to hug you in premium comfort. Its 300 lb. capacity and rich colors make it suitable from boardwalk to boardroom. 600D poly and chrome frame. Larger dimensions for extra comfort! Includes matching carry bag.

**Colors:** Olive Green

**Size:** 21.5"W x 21"D x 33.5"H (overall width including armrests: 31.5")

**Imprint Area:** 10"W x 3"H. Standard imprint area is on the outside chair back only

**Optional Imprint Area** is available on chair bag - 10"W x 3"H. Imprint on standard location unless otherwise specified on order



**118 The Chairman**

*This One Is Clearly The Boss*

The industry's finest folding chair. This is truly furniture quality. The smooth, aluminum arms provide ultimate comfort while making it the easiest folding chair to get in and out of. Locks open and closed for safety. Perfect for executive gifts, sales incentives or rewards. Aluminum frame and armrests make it strong, yet lightweight! Extra large size with deluxe Nylon and mesh insert and thick padding on seat and back. Side seat pocket with insulated beverage holder. Includes extra large matching carry bag in 600D Poly. 400 lb. capacity.

**Color:** Black

**Size:** 25.5" W x 22.5" D x 35"H (overall width including armrests: 25.5")

**Imprint Area:** 8"W x 3"H on inside front of chair back. Max 1 color screen print one side only. Heat transfers for multi-color logos

**Optional imprint locations:**

Outside back of chair back: 8"W x 3"H. Max 1 color screen print. Heat transfer available for multi-color logos

Side Pocket: 4"W x 3"H. Max 1 color screen print. Heat transfer available for multi-color logos

Carry Bag: 10"W x 5"H. Max 2 color print. Heat transfer available for multi-color logos



**120 Stadium Chair**

*Makes Your Seat A Luxury Suite*

Don't let this featherweight fool you; this chair is built extra rugged to withstand even the rowdiest fan. While allowing for a large imprint area. 600D poly. 225 lb. capacity.

**Colors:** Black, Red, Royal Blue

**Size:** 18.5"W x 17.5"D x 17.5"H (overall width including armrests: 21.75")

**Imprint Area:** 5.5"W x 4.75"H Standard imprint area is on back pocket



Folded



Large Pocket



**121 Game Day Chair**

*A Look That's More Dramatic For Any Sports Fanatic!*

Whether you are tailgating before the big game or on the sideline at your child's soccer match, why not upgrade your seat to our Game Day chair? Its hourglass-shaped insert gives this chair a fresh new look that will warm your seat and turn some heads. 600D Poly. Black carry bag. 300 lb. capacity.

**Colors:** Grey, Red, Royal

**Size:** 21"W x 21"D x 35"H (overall width including armrests: 32")

**Imprint Area:** 8"W x 4"H. Standard imprint area is on the chair front. **Optional Imprint Areas** are available on chair back - 8"W x 4"H, or bag - 10"W x 5"H. Imprint on standard location unless otherwise specified on order



**111 Cool Breeze Lounger**

*You'll Still Feel A Breeze At 90 Degrees*

The hotter the better with this lounger. The center mesh panel provides perfect ventilation for greater comfort, and allows dirt and sand to fall through. Whether at the beach, or on the sideline, this chair's a winner. Silver color frame, black carry bag, 300 lb. capacity.

**Colors:** Black, Lime, Orange, Pink, Red, Royal Blue

**Size:** 20.5"W x 20.5"D x 35"H (overall width including armrests: 31.75")

**Imprint Area:** 10"W x 3"H. Standard imprint area is on the chair front.

**Optional Imprint Areas** are available on chair back - 10"W x 3"H, or bag - 10"W x 5"H. Imprint on standard location unless otherwise specified on order





**112 Premium Lounger**

*Like Sitting In Dad's Recliner!*

This oversized beauty has quilted padding for extra comfort. It's 400 lb. capacity makes it ideal for the plus-sized user, but exceptional for all those seeking premium comfort. Perfect for rewards, recognition or incentives. Premium folding camp chair. Heavy gauge aluminum frame, extra-wide, thick padded seat, insulated drink holder. 210D Poly black carry bag.

**Color:** Blue

**Size:** 24"W x 22"D x 35"H (overall width including armrests: 37.25")

**Standard Imprint Area:** 12"W x 6"H on inside front of chair back. Max 1 color screen print one side only. Heat transfers for multi-color logos

**Optional Imprint Locations:**

Outside back of chair back: 12"W x 6"H. Max 1 color screen print. Heat transfer available for multi-color logos. Carry Bag: 10"W x 5"H. Max 2 color print. Heat transfer available for multi-color logos



**113 Elite Lounger**

*Laid Back Luxury!*

This elegant chair's extra high back is padded top to bottom for ultimate comfort. Add an adjustable/removable head cushion, and you've got a chair fit for royalty. Rated for 400 lbs. Perfect for executive gifts or rewards and incentives. Heavy gauge aluminum frame, extra tall, thick padded seat and headrest, insulated drink holder. Black 210D Poly carry bag.

**Color:** Khaki

**Size:** 21.5"W x 19"D x 37"H (overall width including armrests: 31.5")

**Standard Imprint Area:** 11"W x 4"H on front of pillow. Max 1 color screen print. Heat transfers for multi-color logos

**Optional Imprint Locations:**

Back of pillow: 11"W x 4"H. Max 1 color screen print. Heat transfer available for multi-color logos

Carry bag: 10"W x 5"H. Max 2 color print. Heat transfer available for multi-color logos



**150 Table for Two**

*Short And Sweet This Is One To Keep!*

Use this mesa to hold more cerveza. The perfect complement to your favorite sport chair. Folds down into a carry bag for easy storage and carrying. Keep it handy in the trunk of your car. Two cup holders provide a spill-proof and kid-proof space for your cold beverage while leaving ample room for extra stuff.

It will also double as footrest when the need calls for it. Elastic straps pull table tight and attach to bottom of each leg. 600D poly table top with 210D poly drawstring carry bag. Steel frame.

**Color:** Black

**Size:** 18.5"W x 18.5"H x 16"D

**Imprint Area:** 5.5"W x 5.5"H in middle of table or on carry bag.



**151 The Event Table**

*Your Game Day Crap Won't Fill Up Your Lap!*

This large table seats 4 - whether it's for a tailgate spread or a family picnic. Four drink holders ensure spill-proof entertainment while the soft shelf underneath provides added space.

The table top easily pops into place. When not in use, the legs/frame and table top folds down to fit inside the zippered carry bag. 600D poly table top and carry bag. Steel frame.

**Color:** Black

**Size:** 29"W x 24"H

**Imprint Area:** 5.5"W x 5.5"H In Middle Of Table or On Carry Bag



**9007 Stadium Seat**

*The Best Seat In The House!*

This is a seat cushion on steroids, providing cushioned seat and back support, front flap organizer with insulated drink holder, and a 600 denier weather-resistant shell. Whether you are in a stadium chair, bleacher, or on concrete risers, this provides warmth, comfort and convenience at any sporting event. Padded seat and back with adjustable strap support and large outside pocket.

**Color:** Black

**Size:** 16.5"W x 15"D

**Imprint Area:** 6.5"W x 6.5"H. Standard imprint area is on back pocket

**Optional Imprint Area** is available on beverage pocket 3"W x 2.5"H. Imprint on standard location unless otherwise specified on order



**9008 Stadium Cushion**

*Pad Your Seat When Your Teams Compete!*

This budget-friendly cushion can provide you comfort, even when your team is losing! Slip your hand into the pocket and wave it in the stands to show your spirit and support! Perfect for gameday giveaways, school fundraisers, or season ticket holders! This seat cushion is simply perfect. Front pocket holds programs, tickets, etc. Carry handle. Non-woven PP 80 gsm.

**Colors:** Black, Green, Lime, Navy, Orange, Red, Yellow

**Size:** 12"W x 12"H x 0.37"D

**Imprint Area:** 5.5"W X 4.5"H on Front Pocket. Max one-color screen print. Heat transfer is available for multicolor logos



**9010 Beach Mat**

*Sun, Sand, And Style!*

The perfect beach companion that comfortably separates you from the sand while soaking up the sun. The natural straw liner makes it cool, comfortable, and durable. It folds quickly and easily into its own lining and toggles shut to tote away or store. Wood button detail. Folds out to 36" wide! Nylon shell.

**Colors:** Black, Lime, Orange, Pink, Red, Yellow

**Size:** 36" W x 72"L

**Imprint Area:** 6"W x 5"H On Front Pocket



**9009 FANTastic Stadium Seat**

*When Supporting Your Player Could Use One Extra Layer!*

Portable and lightweight, this seat is game ready! A large back pocket holds a program or snacks. The padded seat and back provide support and comfort on the bleachers. Adjustable straps connect the back and seat. 600D poly.

**Colors:** Red, Royal

**Size:** 16.5"W x 15.25"D

**Imprint Area:** 6.5"W x 6.4"H On Back Pocket



## ORDER INFORMATION

Blank Orders: First column quantity required. EQP pricing on stock items only. Catalog quantities will ship within 24 hours if received by 1 pm. If "assembly" is requested for chairs (chair and pillow, if applicable, inserted into carry bags), please allow 48 hours.

Verbal orders: Not accepted.

Less-than Minimum: Add \$50(v) per color. Absolute minimum is half of first column quantity. Embroidered items – no less than minimum accepted. Applies to blank goods and printed.

Over/Under Runs: We always attempt to ship exact quantities; however, all orders are subject to a 5% over/under. Quantity shipped will be invoiced. EXACT quantity request will incur a \$30(V) charge. There is no charge for orders marked ONLY "No Over" or "No Under" but these orders risk being shipped under or over quantity ordered.

Cancellations: \$30(V) per order plus all other costs incurred up to the time of cancellation. Cancellations on orders already printed will not be accepted. All cancellations must be in writing.

Order Changes: Any changes made to an existing order after received at factory must be confirmed in writing via fax or email. Order changes may delay delivery.

Claims: Customer service must be notified of any quality issues regarding merchandise or imprint within 30 days of receipt of order. Returns must include a valid return authorization number. Blank merchandise is subject to a 20% restocking fee. No claim or return will be accepted or credited 30 days after shipment. Southern Plus will replace the goods or refund the purchase price for the merchandise at Southern Plus' discretion.

Co-op Programs: Call for details.

Production Time Stock Items: 5-7 business days on screen printed orders from receipt of art approval; standard catalog quantities. Allow additional 7 days for embroidery and heat transfers. Requests for faster delivery will be reviewed and confirmed if possible by customer service.

Rush Service: Free 24-Hour rush service available on select items. 3 day rush available on most screen printed items for \$62.50(V) charge. See full details on website.

Samples: Available at EQP plus shipping. Sample orders up to \$10(V) are no charge except shipping charges. Limit three (3) blank samples per item. Exclusions may apply. Samples may be blank or random.

Spec samples: EQP pricing plus regular setup charges. Call for pricing on items decorated with Heat Transfer or embroidery.

Self-Promo: Most items available at EQP less 20%, max third column quantity. Normal setup charges apply. Exceptions apply. Contact customer service for full details. Copy must include distributor name and logo.

Acknowledgements: All printed orders will be acknowledged by fax or email. Please review carefully and confirm all details. Orders will not be released for production before receipt of approval.

Re-orders: Orders placed within a year - Setup Free \$35 (v). Orders placed after a year - regular setup fees apply. Must include original purchase order number and complete order information (products, quality, logo name, etc.) and copy of the artwork for verification.

Payments: Net 30 days upon credit approval. Payments not received by the due date are subject to a 1.5% per month late payment charge. First orders, custom orders and large orders may require a deposit or prepayment. Credit application is available on website or may be requested from customer service. We accept Visa, Mastercard or American Express at the time your order is placed. After orders have been shipped and invoiced we will no longer accept credit card payments. There will be a \$40(V) charge for checks returned due to NSF.

F.O.B. Point: Varies by product. GA, CA, SC, MA, WI, CO, NY.

## ARTWORK & IMPRINT METHODS

Email to: [artwork@southernplus.com](mailto:artwork@southernplus.com). Must include PO#, Company Name, Your Name, Phone #, Item #.

Art Requirements: Adobe Illustrator or Photoshop in a format of AI, EPS, TIFF or PDF. Vectors art with fonts converted to curves. 600dpi or higher at 100% or larger. Black and White CAMERA READY. Art will be maxed out to our imprint area unless otherwise requested.

Recreating Artwork: \$40(V) per hour, one-hour minimum. Art charges are advised in advance. Typesetting is \$15(V) for straight type and \$25(V) for curved or font matching. One edit to artwork will be at no charge. Additional edits requested by customer will be charged \$10(V) per edit.

Imprint Charges: Screen print – see product details in catalog. Heat Transfer – pricing based on size of logo and quantity. Please contact customer service for pricing.

SETUP CHARGES: Screen charges for screen print - \$55(v) per color.

Ink Color Change: \$30(v) per change, per screen.

PMS Color Match: \$50(v) per color. Exact color match is not guaranteed.

Embroidery: Please call customer service for pricing. Please provide thread color or PMS color for matching.

Artwork with tight registration: Artwork with tight registration, halftones, screen tines and/or bleeds must be reviewed by our Art Department for approval. Avoid very fine lines, both in type and illustrations.

Copyright/trademark laws: Southern Plus assumes that artwork submitted for reproduction in producing an order, was submitted in full compliance with the laws governing copyright, trademarks, etc.

## PROOFS AND CONFIRMATIONS

Paper proof and order confirmation: Are sent via fax or email at no charge. Approval of artwork, pricing, product details and ship date is required before production is scheduled. Delays in approval may delay production. Proofs are sent on all orders and reorders unless otherwise requested on PO. NO CREDIT WILL BE ISSUED FOR ANY ART ERRORS AFTER APPROVAL.

Rush Orders: Proofs are waived.

Pre-Productions Proof: \$20(v) plus regular charges (product, setup, run charges) \$150 fee for transfers (non-refundable)

Virtual Proofs: Available on website free of charge.

## SHIPPING/PACKAGING

Shipping Methods: UPS, FedEx or truck line by request. USPS only available for APO addresses.

Truck Shipments: INSIDE DELIVERY must be noted on PO if no loading dock or unloading is required.

Packaging and shipping weights are approximate and available online at [www.Southernplus.com](http://www.Southernplus.com).

Quantity Discrepancy: Any discrepancy in quantity received must be reported to carrier upon arrival and noted on shipping documents.

Drop Shipments: \$7.50(V) per additional address.

Third Party Carriers: \$8.75(V) pallet fee or \$2(V) per carton handling applies. If we ship on your account, you assume responsibility for the shipment from the time the order is ready for pickup.

Individual Item Packaging: For individual polybags add \$0.40(V) per item. Other individual or custom packaging available – please contact customer service for quote.

Insertions: Southern Plus will insert your items at a charge of \$0.50(V) per item (UPC labels, cards etc.). Subject to change based on type of insertion.

Special Shipping or Packaging: May require extra lead time. Instructions must be sent to Southern Plus prior to production.

Ship Date Estimate: Orders may ship BEFORE the requested ship date unless specifically stated on PO to not ship early.

## MISCELLANEOUS

Product Safety: Our products are designed to meet all U.S. standards for product safety. Please visit the compliance page on our website to view product safety details.

Prop-65: All shipments to California will include a product warning label in accordance with Proposal 65.

General Disclaimer: All orders subject to product availability. Price, specifications and availability are subject to change without notice. Southern Plus cannot guarantee continuity of exact shade, color, size, weight, texture, or construction of finished goods. Check our web site at [www.southernplus.com](http://www.southernplus.com) to confirm current pricing and product information.

We cannot be held liable for inaccurate information on third party websites or search engines. Photographs in this catalog or on website may not show true color or texture of product.

Trademark Usage: Logos shown in this catalog are for illustrative purposes only and do not imply endorsement and are not for sale except by authorized owner. We reserve the right to use all printing images in our advertising and displays unless otherwise notified in writing at the time of order.

Force Majeure: Southern Plus cannot be held responsible for delays in the performance or nonperformance caused by circumstances beyond our reasonable control, including but not limited to natural disasters, fire, war, government regulation, accident, strikes or labor problems, port congestion, customs inspections/holds, or shortages or inability to material, equipment or transportation.

Product representations: Every effort has been made to ensure all product images, proofs and virtual proofs are accurate and true to the products. However, due to changes in stock, screen color variations, and other factors, we encourage you to request a sample before placing your order so that you can be sure the product is exactly what you're expecting. Small variations in images and virtual proofs are to be expected and will not result in credits.

# SOUTHERN PLUS



Umbrellas, Chairs, Bags,  
Blankets, Aprons, Coolers,  
Robes/Spa, Picnic, Ponchos,  
Folding Tables

# 2020



ASI 88367  
PPA1110918  
UPIC SOUTHPLS