

DRUM-LINE^{INC.}

The Complete Source for Paper Products

2020 Calendars & Planners

602.424.7200
 WWW.AMERICANTITLESERVICEAGENCY.COM
Above All Else... Service!



AMERICAN TITLE SERVICE AGENCY

SUNDAY	MONDAY	TUESDAY	WEDNESDAY	THURSDAY	FRIDAY	SATURDAY
2020 JANUARY			1 <small>NEW YEAR'S DAY</small>	2	3	4
5	6	7	8	9	10	11
14	15	16	17	18		
21	22	28	29			

PAYMENT CALCULATOR

Per \$1000 Financed

Rate	30 Year	30 Year
3.000	6.99882	4.21604
3.250	7.02689	4.23209
3.500	7.14883	4.45545
3.750	7.27232	4.63116
4.000	7.39888	4.77415
4.250	7.52778	4.87560
4.500	7.64923	5.00625
4.750	7.77332	5.16447
5.000	7.89794	5.34822
5.250	8.02619	5.52204
5.500	8.17083	5.67789
5.750	8.28410	5.82573
6.000	8.43857	6.00551
6.250	8.57453	6.15717
6.500	8.71107	6.32058
6.750	8.84909	6.48588
7.000	8.98828	6.65302
7.250	9.12863	6.82110
7.500	9.27101	6.99115
7.750	9.41547	7.16412
8.000	9.56202	7.33786
8.250	9.71140	7.51287
8.500	9.84740	7.68813
8.750	9.98440	7.86330
9.000	10.14247	8.04823
9.250	10.29166	8.23275
9.500	10.44225	8.40854
9.750	10.59363	8.58554
10.000	10.74685	8.77372

Supporter of:

- Cancer Society
- Hoover Association
- ORF Foundation
- Wend's Scholarship
- Children's Hospital
- P. Like Center
- Zoro Fund



BAILEY FAMILY FARM

104 E. Broadway
 Iowa, IL 62838
 Office: 618-245-8533
 Fax: 618-245-6612
 www.baileyfamilyfarm.com

Jan. 2020

S	M	T	W
	5	6	7
12	13	14	15
19	20	21	22
26	27	28	29


December 2019

1	2	3	4	5	6	7
8	9	10	11	12	13	14
15	16	17	18	19	20	21
22	23	24	25	26	27	28
29	30	31				

February 2020

1	2	3	4	5	6	7
8	9	10	11	12	13	14
15	16	17	18	19	20	21
22	23	24	25	26	27	28
29	30	31				

2020
STRONGER TOGETHER



Jordan W. Settle
 Potentate

EST 1949

Chuckran

AUTO PARTS

"Dealers in Parts and Automobiles"

PHONE: (508) 697-6319 Bridgewater, MA 02324
 TOLL FREE: (877) 697-6319 www.chuckranautoparts.com

2020
WEDNESDAY

1

JANUARY
 New Year's Day

Catalog Supplement
 Prices good until
 12/31/19.



www.drum-line.com

Almanacs
 Commercial
 Contractor
 Year-at-a-Glance
 Stock Themes





Bradford National Bank



Greenville
100 E. College
664-2200

Highland
1100 Mercantile Drive
651-1700

Marine
102 N. Duncan
887-9000

Member FDIC www.BradfordBank.com Equal Housing Lender

Flower — Carnation Birthstone — Garnet

JANUARY 2020

Do Not Tear Off, Another Month On Back.

SUNDAY	MONDAY	TUESDAY	WEDNESDAY	THURSDAY	FRIDAY	SAURDAY
1	2	3	4	5	6	7
8	9	10	11	12	13	14
15	16	17	18	19	20	21
22	23	24	25	26	27	28
29	30	31				

ASSOCIATED TRUSS & LUMBER

388 S. Larkin Rd., Sunnyvale, Texas 75182
Phone: 972-226-1973

P.O. Box 851629, Mesquite, Texas 75185
Fax: 972-226-9253

DECEMBER 2019

1	2	3	4	5	6	7
8	9	10	11	12	13	14
15	16	17	18	19	20	21
22	23	24	25	26	27	28
29	30	31				

JANUARY 2020

Moon's Phase in Eastern Time
FLOWER: Snowdrop — GEM: Garnet — WATERMAN: Sign of the Month — LEGS: Sign Waterman Rules Jan. 20 to Feb. 18 Weight 13.27oz.

FEBRUARY 2020

1	2	3	4	5	6	7
8	9	10	11	12	13	14
15	16	17	18	19	20	21
22	23	24	25	26	27	28
29	30					

SUN	MON	TUE	WED	THU	FRI	SAT
1	2	3	4	5	6	7
8	9	10	11	12	13	14
15	16	17	18	19	20	21
22	23	24	25	26	27	28
29	30	31				

TRUSTY TIRE INC.

"A NAME YOU CAN TRUST"
Tires — Brakes — Shocks — Alignments
1074 Old Forest Rd.
Corydon, IN
Phone: 812-738-4212
www.trustytireinc.com

303 - 11 x 16 3/4

Flower — Carnation Birthstone — Garnet

JANUARY 2020

Do Not Tear Off, Another Month On Back.

SUNDAY	MONDAY	TUESDAY	WEDNESDAY	THURSDAY	FRIDAY	SAURDAY
1	2	3	4	5	6	7
8	9	10	11	12	13	14
15	16	17	18	19	20	21
22	23	24	25	26	27	28
29	30	31				

301 - 11 x 11 1/8

Item: 303
Size: 11 x 16 3/4
Imprint Area: 10 x 3 3/4

Item: 301
Size: 11 x 11 1/8
Imprint Area: 10 x 2

Paper Stock: 6 sheets, 50 lb. white offset, black imprint.

Standard Features: 12 month (January - December) two-sided calendar filled with weather predictions, sunrise/sunset times, zodiacs, moon phases, best fishing days, weights and measures, farm records, historical events, and general information. Black tin at top.

item	250	500	1000	2500
301	1.81	1.47	1.22	1.10
303	2.32	1.94	1.68	1.53

(4R)

MW23 - 12 1/4 x 18 5/8

Item: MW23
Size: 12 1/4 x 18 5/8
Imprint Area: 10 1/2 x 3 3/4

Paper Stock: 7 sheets, 50 lb. white offset, black imprint.

Standard Features: 12 month (January - December) two-sided calendar filled with weather predictions, sunrise/sunset times, zodiacs, moon phases, best fishing days, weights and measures, farm records, historical events, and general information. Black tin at top.

item	100	250	500	1000
MW23	4.48	3.68	2.76	2.45

(4R)



Almanac Calendars



JANUARY 2020																																												
Flower — Carnation	FARM AND GARDEN										Birthstone — Garnet																																	
<table border="1"> <tr><td>D</td><td>S</td><td>M</td><td>T</td><td>F</td><td>S</td></tr> <tr><td>1</td><td>2</td><td>3</td><td>4</td><td>5</td><td>6</td></tr> <tr><td>7</td><td>8</td><td>9</td><td>10</td><td>11</td><td>12</td></tr> <tr><td>13</td><td>14</td><td>15</td><td>16</td><td>17</td><td>18</td></tr> <tr><td>19</td><td>20</td><td>21</td><td>22</td><td>23</td><td>24</td></tr> <tr><td>25</td><td>26</td><td>27</td><td>28</td><td>29</td><td>30</td></tr> <tr><td>31</td><td></td><td></td><td></td><td></td><td></td></tr> </table>	D	S	M	T	F	S	1	2	3	4	5	6	7	8	9	10	11	12	13	14	15	16	17	18	19	20	21	22	23	24	25	26	27	28	29	30	31						1 2 3 4 5 6 7 8 9 10 11 12 13 14 15 16 17 18 19 20 21 22 23 24 25 26 27 28 29 30 31	1 2 3 4 5 6 7 8 9 10 11 12 13 14 15 16 17 18 19 20 21 22 23 24 25 26 27 28 29 30 31
D	S	M	T	F	S																																							
1	2	3	4	5	6																																							
7	8	9	10	11	12																																							
13	14	15	16	17	18																																							
19	20	21	22	23	24																																							
25	26	27	28	29	30																																							
31																																												



casenet
Aligning Care. Advancing Health.

203-S - 8 5/8 x 16

Spring

203 Cover View

JANUARY 2020																																												
Flower — Carnation	FARM AND GARDEN										Birthstone — Garnet																																	
<table border="1"> <tr><td>D</td><td>S</td><td>M</td><td>T</td><td>F</td><td>S</td></tr> <tr><td>1</td><td>2</td><td>3</td><td>4</td><td>5</td><td>6</td></tr> <tr><td>7</td><td>8</td><td>9</td><td>10</td><td>11</td><td>12</td></tr> <tr><td>13</td><td>14</td><td>15</td><td>16</td><td>17</td><td>18</td></tr> <tr><td>19</td><td>20</td><td>21</td><td>22</td><td>23</td><td>24</td></tr> <tr><td>25</td><td>26</td><td>27</td><td>28</td><td>29</td><td>30</td></tr> <tr><td>31</td><td></td><td></td><td></td><td></td><td></td></tr> </table>	D	S	M	T	F	S	1	2	3	4	5	6	7	8	9	10	11	12	13	14	15	16	17	18	19	20	21	22	23	24	25	26	27	28	29	30	31						1 2 3 4 5 6 7 8 9 10 11 12 13 14 15 16 17 18 19 20 21 22 23 24 25 26 27 28 29 30 31	1 2 3 4 5 6 7 8 9 10 11 12 13 14 15 16 17 18 19 20 21 22 23 24 25 26 27 28 29 30 31
D	S	M	T	F	S																																							
1	2	3	4	5	6																																							
7	8	9	10	11	12																																							
13	14	15	16	17	18																																							
19	20	21	22	23	24																																							
25	26	27	28	29	30																																							
31																																												

75PEC
PIONEER ELECTRIC COOPERATIVE, INC.

1850 W Oklahoma
P.O. Box 368
Ulysses, KS 67880

Toll-Free: 1-800-784-8302
Outage Number: 888-551-4140
www.pioneerelectric.coop



203-F - 8 5/8 x 16

Farmland

Weather Vane

Item: 203-F (Farmland)

Item: 203-S (Spring)

Size: 8 5/8 x 16 (open)

8 5/8 x 9 (closed)

Imprint Area: 7 3/4 x 1 1/4

Paper Stock: Front Cover: 65 lb. cover. Pad: 50 lb. white offset. Black imprint at bottom of back sheet.

Standard Features: 12 month (January - December) calendar printed red and black filled with weather predictions, sunrise/sunset times, zodiacs, moon phases, best fishing days, best planting days, and general information. Full color stock photo inside cover. Season's Greetings on outside front cover.

item	image	250	500	1000	2500
203-F	Farmland	1.51	1.31	1.21	1.14
203-S	Spring	1.51	1.31	1.21	1.14

(4R)



Commercial Calendars



MW21 - 18 x 25



MW22 - 12 1/4 x 18 1/2



1818 - 18 x 18 3/4

Item: MW21

Size: 18 x 25

Imprint Area: 17 x 8

Paper Stock: 13 sheets, 50 lb. white offset, printed one or two standard colors. Black tin at top with hanger.

Standard Ink Colors: PMS® 185-Red, Reflex Blue, 348-Green, Pantone Yellow, 021-Orange, 202-Burgundy, Black.

Standard Features: 13 month (December - December) preprinted calendar includes American and major Canadian holidays, moon phases, and Julian dates.

item	imprint	100	250	500	1000
MW21	One Color	7.84	7.05	6.27	5.79
MW21	Two Colors	8.68	7.39	6.43	5.88
MW22	One Color	5.69	4.38	3.70	3.41
MW22	Two Colors	6.53	4.72	3.87	3.50

(4R)

Item: MW22

Size: 12 1/4 x 18 1/2

Imprint Area: 11 3/4 x 8 1/4

Item: 1818

Size: 18 x 18 3/4

Imprint Area: 17 x 5 1/2 Top of Calendar

Paper Stock: 12 sheets, 50 lb. white offset, printed one or two standard colors.

Standard Ink Colors: PMS® 185-Red, Reflex Blue, 348-Green, Pantone Yellow, 021-Orange, 202-Burgundy, Black.

Standard Features: 12 month (January - December) preprinted calendar in black and red. Black tin at top with hanger.

item	imprint	imprint area	100	250	500	1000	2500
1818	one color	17 x 5 1/2	8.60	6.27	4.65	4.54	4.29
1818	two colors	17 x 5 1/2	9.44	6.60	4.82	4.62	4.34

(4R)



Contractor Calendars

- Six pre-printed pad color combinations or choose your own custom color.

SOURCE LOGISTICS
866 231 3855

JANUARY 2020

KEY TO SYMBOLS
 ☞ Total Days Elapsed in the Year
 ☞ Working Days Remaining in the Year (Excluding Saturdays and Sundays)
 ☞ Total Days Remaining in the Year
 ☞ Working Days Remaining in the Year (Excluding Saturdays and Sundays)

2020 JANUARY 2020
 SUNDAY MONDAY TUESDAY WEDNESDAY THURSDAY FRIDAY SATURDAY

1 2 3 4
 5 6 7 8 9 10 11
 12 13 14 15 16 17 18
 19 20 21 22 23 24 25
 26 27 28 29 30 31

2020 JANUARY 2020
 JANUARY FEBRUARY MARCH APRIL MAY JUNE
 JULY AUGUST SEPTEMBER OCTOBER NOVEMBER DECEMBER

WA107 - 18 x 25

Patriotic - Reflex Blue & 485 Red

TRAUTSCHOLD MILLWORK, LTD.
 MANUFACTURERS OF
 FINE MILLWORK AND CUSTOM CABINETS
 SINCE 1893
 PHONE (254) 752-6547 • FAX (254) 752-0221
 www.trautscholdmillwork.com
 15th & Franklin Ave. • P.O. Box 175 • Waco, Texas 76703

JANUARY 2020

☞ Total Days Elapsed in the Year
 ☞ Working Days Remaining in the Year (Excluding Saturdays and Sundays)
 ☞ Total Days Remaining in the Year
 ☞ Working Days Remaining in the Year (Excluding Saturdays and Sundays)

2020 JANUARY 2020
 SUNDAY MONDAY TUESDAY WEDNESDAY THURSDAY FRIDAY SATURDAY

1 2 3 4
 5 6 7 8 9 10 11
 12 13 14 15 16 17 18
 19 20 21 22 23 24 25
 26 27 28 29 30 31

2020 JANUARY 2020
 JANUARY FEBRUARY MARCH APRIL MAY JUNE
 JULY AUGUST SEPTEMBER OCTOBER NOVEMBER DECEMBER

MW20T - 18 x 25

165 Orange & Black

ELECTRICAL DISTRIBUTORS, INC.

2020 JANUARY 2020
 1 2 3 4
 5 6 7 8 9 10 11
 12 13 14 15 16 17 18
 19 20 21 22 23 24 25
 26 27 28 29 30 31

MW20A Process Blue & Black

Builders FirstSource

2020 JANUARY 2020
 1 2 3 4
 5 6 7 8 9 10 11
 12 13 14 15 16 17 18
 19 20 21 22 23 24 25
 26 27 28 29 30 31

MW20C 185-Red & Black

Christopher Goff

2020 JANUARY 2020
 1 2 3 4
 5 6 7 8 9 10 11
 12 13 14 15 16 17 18
 19 20 21 22 23 24 25
 26 27 28 29 30 31

MW20B Black

Jkenterprise

2020 JANUARY 2020
 1 2 3 4
 5 6 7 8 9 10 11
 12 13 14 15 16 17 18
 19 20 21 22 23 24 25
 26 27 28 29 30 31

MW20G 354-Green & Black

Trilogy

2020 JANUARY 2020
 1 2 3 4
 5 6 7 8 9 10 11
 12 13 14 15 16 17 18
 19 20 21 22 23 24 25
 26 27 28 29 30 31

MW20Z Custom

- Bars printed to match imprint

Size: 18 x 25

Imprint Area: 17 x 4 1/2

Paper Stock: 13 sheets, 50 lb. white offset, printed one or two standard colors. Black tin at top with hanger.

Standard Ink Colors: PMS® 185-Red, 485-Red, Reflex Blue, 348-Green, 354-Green, Pantone Yellow, 021-Orange, 165-Orange, 202-Burgundy, Black.

Standard Features: 13 month (December - December) preprinted calendar includes memo lines in date blocks along with symbols denoting days elapsed and remaining in the year, work days remaining without Saturdays and Sundays, and work days remaining without Sundays. Includes American and major Canadian holidays and moon phases.

imprint	imprint	100	250	500	1000
MW20/WA107	One Color	7.84	7.05	6.27	5.79
MW20/WA107	Two Colors	8.68	7.39	6.43	5.88
MW20Z	One Color	8.68	7.39	6.44	5.88
MW20Z	Two Colors	9.52	7.73	6.61	5.97

(4R)

Commercial Calendars

NEW

MESMER FERTILIZER

Seeds
Chemicals
Custom Application

Bethel, MO 660-284-6624

JANUARY 2020

SUNDAY	MONDAY	TUESDAY	WEDNESDAY	THURSDAY	FRIDAY	SATURDAY
		1 New Year's Day	2	3	4	
5	6	7	8	9	10	11
12	13	14	15	16	17	18
19	20 Martin Luther King Day	21	22	23	24	25
26	27	28	29	30	31	MEMOS

1825 - 19 x 25

Item: 1825
Size: 19 x 25
Imprint Area: 17 1/2 x 7 Top of Calendar

Image Paper Stock: 100 lb. matte text printed 185 Red and/or Reflex Blue.

Calendar Pad: 12 sheets, 50 lb. white offset printed 185 Red and Reflex Blue.

Standard Features: Calendar pad stapled to bottom of image sheet. Black tin at top with hanger.

item	photo/imprint area	100	250	500	1000	2500
1825	17 1/2 x 7 1/2	7.30	5.46	4.38	3.79	3.47

(4R)

BAY CITIES PRODUCE CO.
Est. 1947
Fresh, Frozen & Custom Cut Fruits and Vegetables
Great Taste - Safe Taste

February 2020

SUN	MON	TUE	WED	THU	FRI	SAT
						1 First Quarter Moon
						8
	6	7				13
	13	14				15
	20	21				22
	27	28				29

MW3C - 17 x 24

TMS EQUIPARTS SLOAN

Save Money.
Save Water.
Save the Planet.

Equiparts is Your #1 Source for Water Saving Parts and Units from Sloan.

Toll Free: 800-442-6622 • Pittsburgh: 412-781-9100 • Fax: 412-781-3085
www.equiparts.net • www.sloanrepair.com • www.equipartsdrinkingfountains.com

January 2020

SUN	MON	TUE	WED	THU	FRI	SAT
		1 New Year's Day	2 First Quarter Moon	3	4	
5	6	7	8	9	10 Full Moon	11
12	13	14	15	16	17	18
19	20	21	22	23	24	25
26	27 Martin Luther King Day	28	29	30	31 New Moon	

MW1C - 12 x 17 3/8

Item: MW1C
Size: 12 x 17 3/8
Imprint Area: 12 x 8 1/8

Image Paper Stock: Gloss cover, printed one to full color. Submit your own custom artwork or use one of our stock photos. Exact PMS matches not available.

Calendar Pad: January – December (12 months) calendar printed in black and red ink only on white offset. Includes American holidays, moon phases, and Julian dates. Last sheet features two years at a glance.

Standard Features: Calendar pad stapled to bottom of image sheet. Black tin at top with hanger.

item	size	imprint area	100	250	500	1000
MW1C	12 x 17 3/8	12 x 8 1/8	3.35	2.93	2.73	2.31
MW3C	17 x 24	17 x 12	4.83	4.54	3.91	3.44

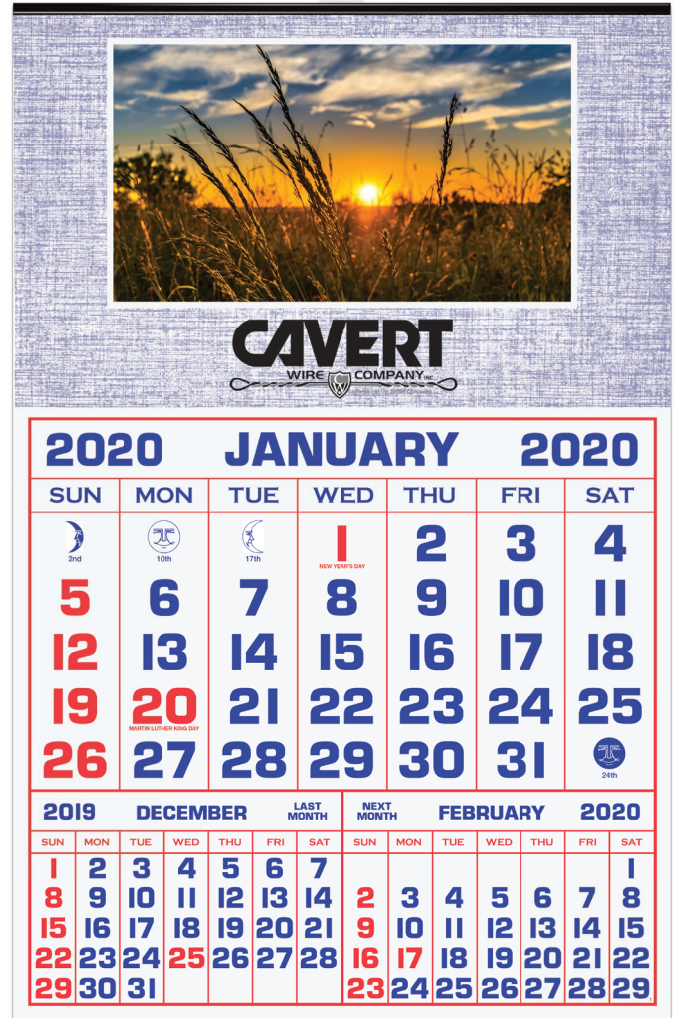
(4R)



Utility Calendars



7072 - 11 x 17



230 - 12 5/8 x 19 1/2

Item: 7072

Size: 11 x 17

Imprint Area: 9 1/2 x 1 1/2

Image Paper Stock: Gloss cover, printed full color. Submit your own custom artwork or use one of our stock photos.

Calendar Pad: January – December (12 months) calendar printed in red and blue ink only on white offset with moon phases and Julian dates on the front of the pad. Monthly budget schedules, zodiac information, and weather forecasts on the back of each sheet.

Standard Features: Calendar pad stapled to bottom of image sheet. Black tin at top. Handy business summary and inventory sheets are included, as well as, pages for important household and crop records.

item	size	imprint area	100	250	500	1000	2500
7072	11 x 17	9 1/2 x 1 1/2	3.90	3.22	2.61	2.42	2.28

(5R)

Item: 230

Size: 12 5/8 x 19 1/2

Imprint Area: 10 5/8 x 1 1/2

Image Paper Stock: Gloss cover, printed full color. Submit your own custom artwork or use one of our stock photos.

Calendar Pad: January – December (12 months) calendar printed in red and blue ink only on white offset. Features a large easy-to-read pad with extra large reference months.

Standard Features: Calendar pad stapled to bottom of image sheet. Black tin at top with hanger. Under the header sheet are permanent record sheets for each month and areas for important telephone numbers.

item	size	imprint area	100	250	500	1000
230	12 5/8 x 19 1/2	10 5/8 x 1 1/2	5.01	4.34	3.66	3.38

(4R)

Three Months at a Glance Calendars



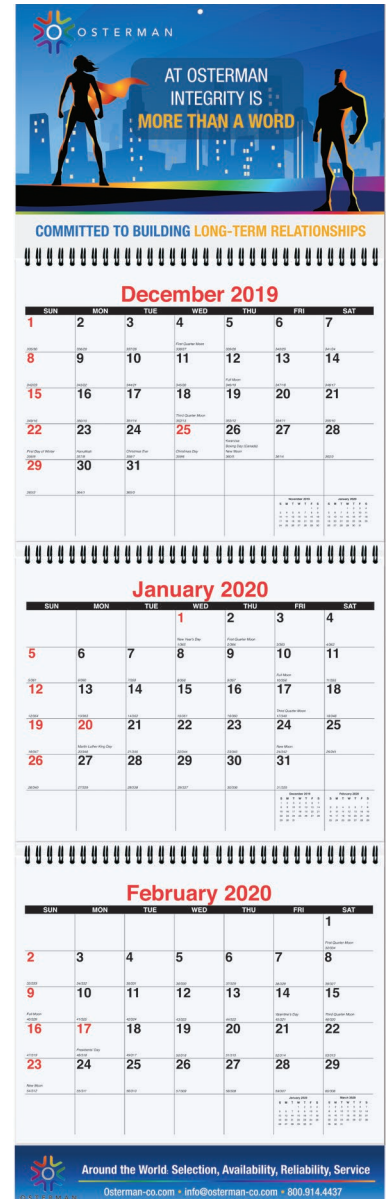
Small Calendar
Item: MW14
Size: Open 6 x 18³/₄
Folds to 6 x 6¹/₄
Imprint Area Top: 6 x 6



Small Calendar
Item: MW12 with apron
Size: Open 6 x 20³/₄
Folds to 6 x 6¹/₄
Imprint Areas:
Top – 6 x 6
Bottom – 5¹/₂ x 1³/₄



Large Calendar
Item: MW15
Size: 10³/₄ x 33³/₄
Folds to 10³/₄ x 9³/₄
Imprint Area Top: 10³/₄ x 8



Large Calendar
Item: MW13 with apron
Size: 10³/₄ x 35
Folds to: 10³/₄ x 10¹/₄
Imprint Areas:
Top – 10³/₄ x 8
Bottom – 10¹/₄ x 1¹/₂

Paper Board Stock: White stock coated one side, printed one to full color. Exact PMS matches not available.

Calendar Pad: Three 14 month (December – January) calendar pads printed in black and red ink only on white offset. Includes American holidays.

Standard Features: Calendar pads wire-o bound into board. Tearing off calendar sheets allows three months to be visible at one time.

Binding: Black Wire-O.

Personalize it!
See drum-line.com for details.

item	size	100	250	500	1000
MW12/14	small	6.52	6.36	6.26	6.11
MW13/15	large	8.35	8.06	7.96	7.77

(4R)

Three Months at a Glance Calendars



MW16 - 12 x 18 1/2



MW30 - 12 1/4 x 25

Item: MW16

Size: 12 x 18 1/2

Overall Imprint Area: 12 x 8 3/4

Top Banner Imprint Area: 12 x 1 3/4

Photo Size: 12 x 7

Image Paper Stock: 12 sheets, 80 lb. gloss text printed full color. Submit 12 custom photos or choose from our stock photos.

Standard Features: 14 months (December - January) shown three months at a glance. Wire-O bound with black or white wire (black will be used unless specified). Wire hook at top for hanging.

item	size	100	250	500	1000
MW16	12 x 18 1/2	6.91	6.12	5.69	5.16

(4R)

Item: MW30

Size: 12 1/4 x 25

Imprint Area: 11 3/4 x 5 1/2

Paper Stock: 12 sheets, 50 lb. white offset, printed one or two standard colors. Black tin at top with hanger.

Standard Ink Colors: PMS® 185-Red, Reflex Blue, 348-Green, Pantone Yellow, 021-Orange, 202-Burgundy, Black.

Standard Features: 14 month (December - January) preprinted calendar shown three months per sheet. Current month includes memo space, American and major Canadian holidays, moon phases, and Julian dates.

item	imprint	100	250	500	1000
MW30	One Color	7.54	6.06	4.88	4.29
MW30	Two Colors	8.38	6.40	5.05	4.37

(4R)

Year-at-a-Glance Calendars



Christine Ferris

cell: (775) 771-3687
(800) 832-2102
aferris417@aol.com
www.LiveAtTahoe.com



2250 - 22 x 34

✦ Perfect for scheduling production

Item: 2250

Size: 22 x 34

Imprint Area: 19 x 3 1/2

Paper Stock: 100 lb. matte text.

Standard Features: 12 month year at a glance calendar preprinted in Process Blue, 185 Red and Black with consecutive day numbers and moon phases. Black tin at top (with hanger) and bottom. Black imprint.

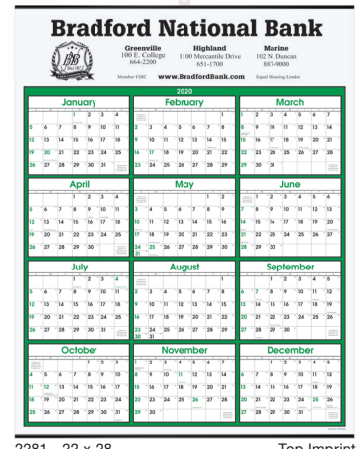
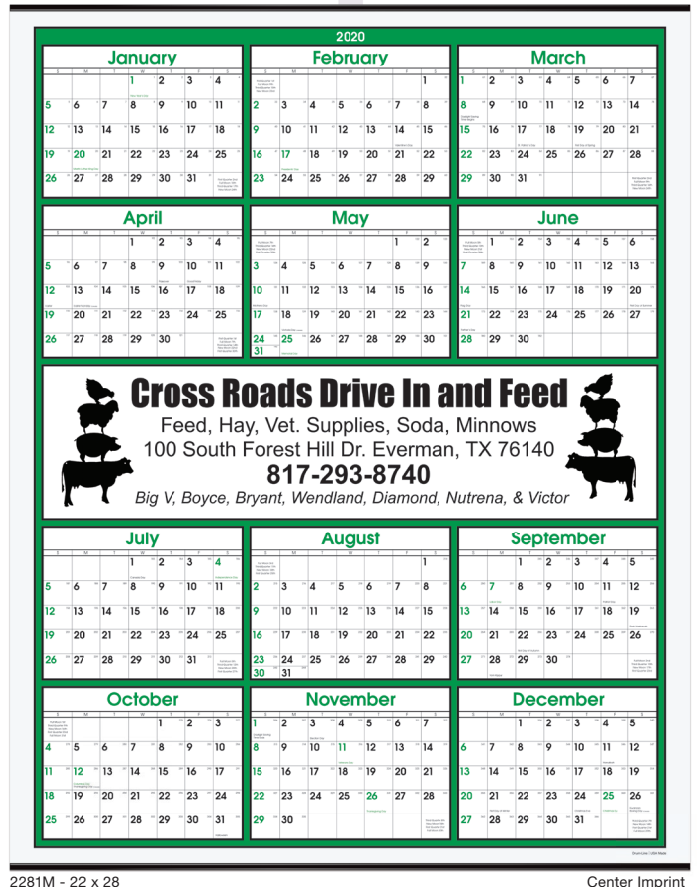
item	imprint area	100	250	500	1000	2500
2250	19 x 3 1/2	5.15	3.89	2.68	2.46	2.17

(5R)



Year-at-a-Glance Calendars

* Choose top or center imprint



Item: 2280 - Top Imprint
Item: 2280M - Center Imprint
Size: 22 x 28
Imprint Area: 21 x 4 1/2

Paper Stock: 100 lb. matte text.

Standard Features: 12 month year-on-a-page calendar preprinted in Reflex Blue and Black. Features generous memo blocks and clean, bold numbers. Includes consecutive numbers and moon phases. Black tin at top (with hanger) and bottom. Black imprint.

Item: 2281 - Top Imprint
Item: 2281M - Center Imprint
Size: 22 x 28

Imprint Area: 21 x 4 1/2

Paper Stock: 100 lb. matte text.

Standard Features: 12 month year-on-a-page calendar preprinted in 348 Green and Black. Features generous memo blocks and clean, bold numbers. Includes consecutive numbers and moon phases. Black tin at top (with hanger) and bottom. Black imprint.

item	100	250	500	1000	2500
2280 / 2280M	3.78	3.10	2.63	2.36	2.18
2281 / 2281M	3.78	3.10	2.63	2.36	2.18

(5R)

Year-at-a-Glance Calendars



T928 - 19 1/2 x 27 Top Imprint



M929 - 19 1/2 x 27 Center Imprint

Item: T928 Top Imprint
Item: M929 Center Imprint
Size: 19 1/2 x 27
Imprint Area: 18 x 9

Paper Stock: 100 lb. gloss text.

Standard Features: 12 month year at a glance calendar in 185-Red and Black. Black tin at top (with hanger) and bottom. Imprint in 185-Red and Black.

item	size	imprint area	100	250	500	1000	2500
T928	19 1/2 x 27	18 x 9	4.43	3.18	2.51	2.17	1.93
M929	19 1/2 x 27	18 x 9	4.43	3.18	2.51	2.17	1.93

(3R)



YG3 - 12 x 18

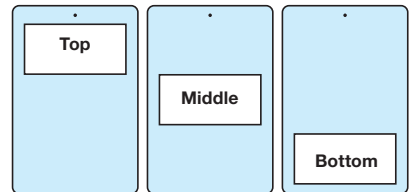


YG1 - 4 x 9



YG2 - 6 x 9

Imprint Area Positions



Item: YG1 - 4 x 9
Item: YG2 - 6 x 9
Item: YG3 - 12 x 18

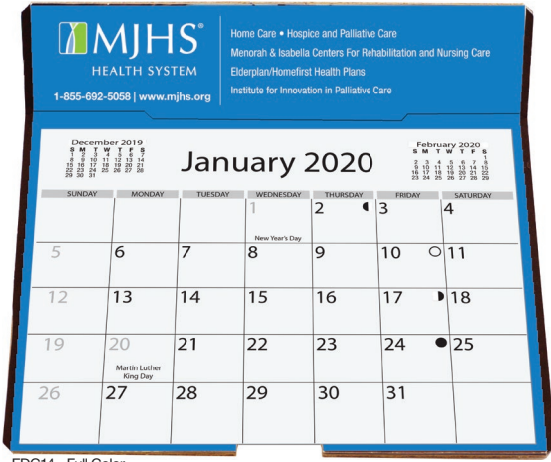
Paper Stock: White 10 pt. coated one side, printed full color with clear gloss coat on one side. Please specify imprint area position: top, middle, or bottom. Exact PMS matches not available.

Standard Features: 12 month year at a glance calendar. Hole at the top for hanging.

item	size	imprint area	250	500	1000
YG1	4 x 9	3 1/2 x 1	N/A	0.66	0.34
YG2	6 x 9	5 1/2 x 2	N/A	1.00	0.49
YG3	12 x 18	10 3/4 x 4 3/4	1.38	1.19	1.02

(3R)

Easel Back Calendars



EDC14 - Full Color



Easel Back



Front Panel - Top

Front Panel - Bottom (behind calendar pad)



Back Panel

- Get double the exposure with a free imprint on the back panel



EDC1 - Foil Stamped

Foil Stamped

Item: EDC1
Size: 6 1/4 x 6 3/8
Calendar Pad Size: 6 x 4 1/2
Imprint Area: 5 7/8 x 1 1/8

Board: Heavyweight black with white accents, white with black accents, or colors shown above. Foil stamped in one standard color.

Standard Foil Colors: Gloss-Black, White, Ivory, Red, Green, Blue, Navy, Orange, Pink; Metallic-Silver, Gold, Copper, Red, Green, Blue.

Standard Features: December - December (13 months) calendar, includes American holidays and moon phases. Die cut easel back for table or desk.

item	100	250	500	1000	
EDC1	Foil Stamped	3.38	2.70	2.47	2.35

Plate charge: \$60.00 per foil color (v)



Colors shown are a printed representation. Request swatch for exact color.

Full Color

Item: EDC14
Size: 6 1/4 x 6 3/8
Calendar Pad Size: 6 x 4 1/2
Imprint Areas:

Top Front Panel: 6 3/16 x 1 1/2
 Bottom (behind calendar): 6 3/16 x 4 3/4. Submit custom art or choose stock January 2021 calendar.
 Back Panel: 6 7/16 x 1 1/2

Board: 80 lb. coated cover printed full color with gloss coat, mounted to heavy black chipboard.

item	100	250	500	1000	
EDC14	Full Color	4.78	3.56	3.15	2.95

(4R)

Calendar Desk Pads

Size: 21 3/4 x 17

★ FREE hole punch



Item DDP3A - Blue and Black calendar



Item CYDDP - Black Calendar

★ Coloring pattern on each month



Item DDP3B - Black calendar

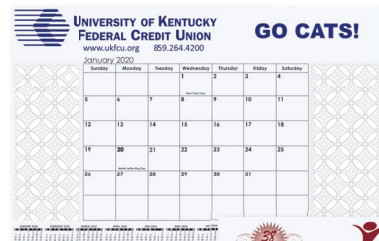


Item DDP7B - Black calendar August 2019 - July 2020

★ Academic



Item DDP3C - Red and Black calendar



Item CYCDP1

Small Calendar Desk Pads available at drum-line.com



Item CDP1B

Optional Corner Imprint

Calendar Desk Pads

with Julian and Contractor Dates

602.424.7200
WWW.AMERICANTITLESERVICEAGENCY.COM
Above All Else... Service!

AMERICAN TITLE SERVICE AGENCY

NEW

JANUARY

SUNDAY	MONDAY	TUESDAY	WEDNESDAY	THURSDAY	FRIDAY	SATURDAY
		1	2	3	4	
5	6	7	8	9	10	11
12	13	14	15	16	17	18
19	20	21	22	23	24	25
26	27	28	29	30	31	

PAYMENT CALCULATOR

As of 1/1/2020

Rate: 3.00%
Term: 30 Years
Amount: \$100,000.00
Monthly Payment: \$4,898.83
Total Interest: \$403,858.80
Total Paid: \$503,858.80

AMERICAN TITLE SERVICE AGENCY

1000 North 2nd Street, Yakima, WA 98901
Phone: (509) 248-4442 | Title Fax: (509) 575-1179 | Escrow Fax: (509) 248-3753

Item CA212 - Patriotic Reflex Blue & 485 Red

Safety King Since 1959
• CLEANING • DEODORIZING • SEALING
www.safetyking.com
1-800-AIR-DUCT

If you're coughin' and you're sneezin' your ducts could be the reason!

JANUARY 2020

SUNDAY	MONDAY	TUESDAY	WEDNESDAY	THURSDAY	FRIDAY	SATURDAY
			1	2	3	4
5	6	7	8	9	10	11
12	13	14	15	16	17	18
19	20	21	22	23	24	25
26	27	28	29	30	31	

Notes:

1 - 1/1 (New Year's Day)

20 - Martin Luther King Day

Item DDP5B - Black calendar with Julian and Contractor dates.

Valley Title Guarantee

302 North 2nd Street | Yakima, WA 98901 | Office (509) 248-4442 | Title Fax (509) 575-1179 | Escrow Fax (509) 248-3753

JANUARY 2020

SUNDAY	MONDAY	TUESDAY	WEDNESDAY	THURSDAY	FRIDAY	SATURDAY
			1	2	3	4
5	6	7	8	9	10	11
12	13	14	15	16	17	18
19	20	21	22	23	24	25
26	27	28	29	30	31	

Notes:

1 - 1/1 (New Year's Day)

20 - Martin Luther King Day

Trust your family's dream, with Valley Title Guarantee!

Item DDP4B - Black calendar with Julian and Contractor dates.

Safety King Since 1959
• CLEANING • DEODORIZING • SEALING
www.safetyking.com
1-800-AIR-DUCT

If you're coughin' and you're sneezin' your ducts could be the reason!

JANUARY 2020

SUNDAY	MONDAY	TUESDAY	WEDNESDAY	THURSDAY	FRIDAY	SATURDAY
			1	2	3	4
5	6	7	8	9	10	11
12	13	14	15	16	17	18
19	20	21	22	23	24	25
26	27	28	29	30	31	

Notes:

1 - 1/1 (New Year's Day)

20 - Martin Luther King Day

Item DDP5D - Blue and Gold calendar with Julian and Contractor dates.

Valley Title Guarantee

302 North 2nd Street | Yakima, WA 98901 | Office (509) 248-4442 | Title Fax (509) 575-1179 | Escrow Fax (509) 248-3753

JANUARY 2020

SUNDAY	MONDAY	TUESDAY	WEDNESDAY	THURSDAY	FRIDAY	SATURDAY
			1	2	3	4
5	6	7	8	9	10	11
12	13	14	15	16	17	18
19	20	21	22	23	24	25
26	27	28	29	30	31	

Notes:

1 - 1/1 (New Year's Day)

20 - Martin Luther King Day

Trust your family's dream, with Valley Title Guarantee!

Item DDP4D - Blue and Gold calendar with Julian and Contractor dates.

AAA PARKING

JANUARY 2020

SUNDAY	MONDAY	TUESDAY	WEDNESDAY	THURSDAY	FRIDAY	SATURDAY
			1	2	3	4
5	6	7	8	9	10	11
12	13	14	15	16	17	18
19	20	21	22	23	24	25
26	27	28	29	30	31	

Notes:

1 - 1/1 (New Year's Day)

20 - Martin Luther King Day

Item DDP6D - Blue and Gold calendar with Julian and Contractor dates.

Size: 21 3/4 x 17

Paper Stock: 60 lb. white offset, printed one or two standard colors, one side. Padded at top with 13 sheets to a pad with chipboard back. Academic (DDP7B) has 12 sheets.

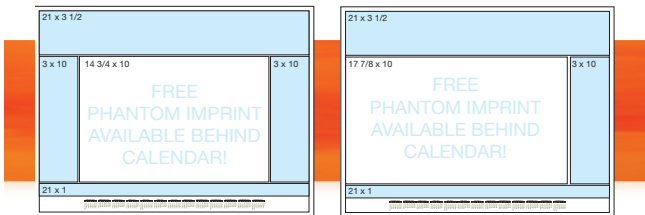
Corners: Two corners at bottom of pad. Leather-like material (see colors below). Optional imprinted corner foil stamped in one color. Choose gold, silver, copper, or white imprint. Chocolate, thunder gray, and cobalt blue may be debossed. See prices below.

Standard Features: December – December (13 months) preprinted calendar. Twelve month reference calendar standard at bottom of each layout. Company logo and information printed in imprint areas shown.

3 Step Ordering

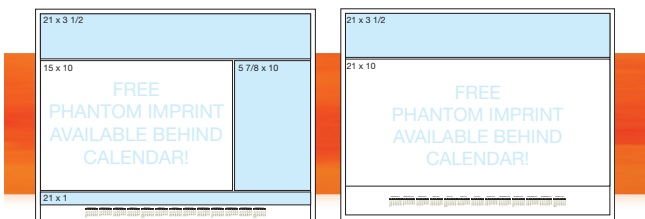
1 Layout 2 Ink Color 3 Corner Color

Calendar Layouts and Imprint Areas



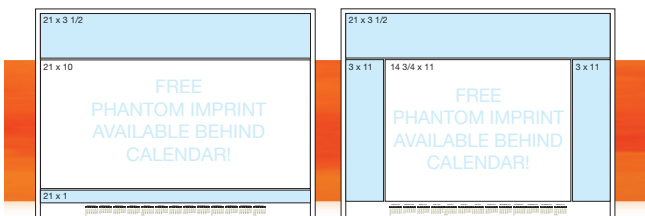
Preprinted Calendar Color:
Item DDP1A - Blue & Black
Item DDP1B - Black
Item DDP1C - Red & Black

Preprinted Calendar Color:
Item DDP4B - Black
Item DDP4D - Blue & Gold
Item CA212 - Blue & Red
with Julian & Contractor dates



Preprinted Calendar Color:
Item DDP2A - Blue & Black
Item DDP2B - Black
Item DDP2C - Red & Black

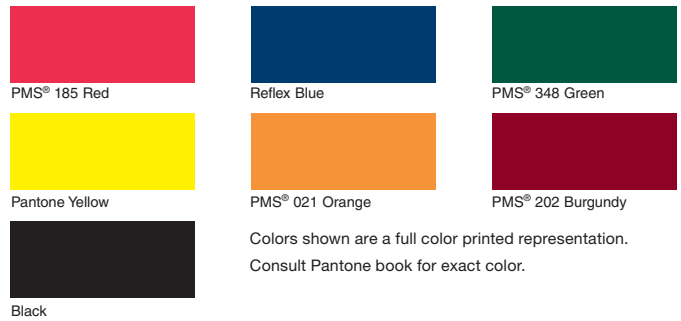
Preprinted Calendar Color:
Item DDP5B - Black
Item DDP5D - Blue & Gold
with Julian & Contractor dates



Preprinted Calendar Color:
Item DDP3A - Blue & Black
Item DDP3B - Black
Item DDP3C - Red & Black

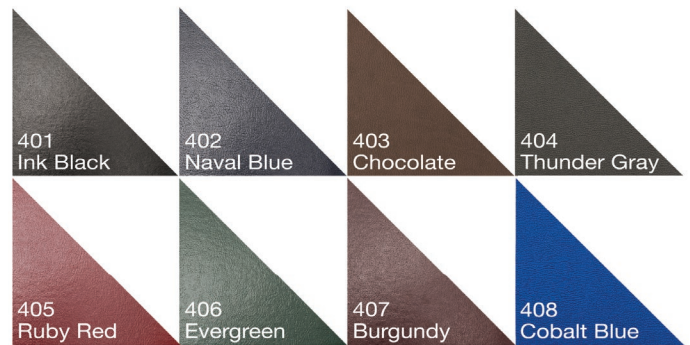
Preprinted Calendar Color:
Item DDP6D - Blue & Gold
with Julian & Contractor dates

Standard Ink Colors



Colors shown are a full color printed representation. Consult Pantone book for exact color.

Leatherette Corner Colors



Colors shown are a printed representation. Request swatch for exact color.

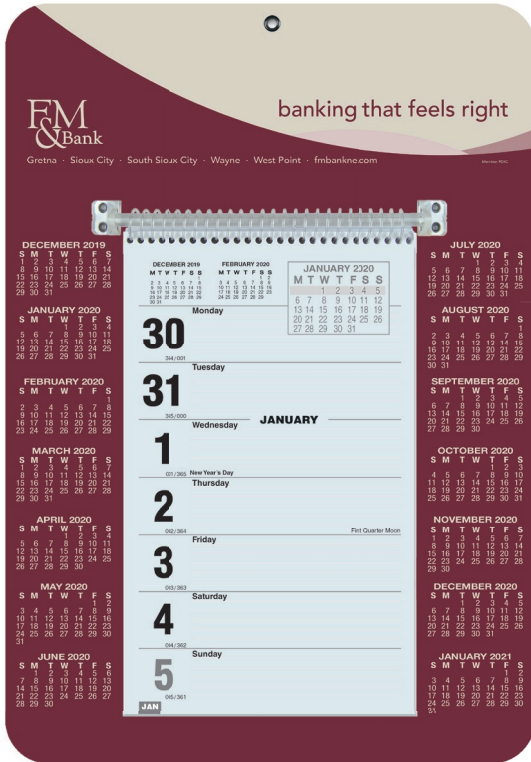
imprint	100	250	500	1000
One Color	7.12	5.32	4.08	3.93
Two Colors	7.58	5.80	4.54	4.40
Imprinted Corner (1 color)	0.85	0.53	0.41	0.36

options	add to base price
Ink colors other than standard	\$60.00 ea
2 hole punch	FREE 10¢ per pad
2 additional corners	75¢ per pad
Imprinted corner plate charge	\$60.00

Weekly Wall Calendars

* 10 color choices at drum-line.com

* Metal reinforced eyelet



WCW4 - 9 X 12 1/4 Monday start

Full Color



WCW7 - 7 x 12 1/4 Sunday start

Full Color



WCW5 - 7 x 13 Sunday start

Foil Stamped

Full Color

Item: WCW7 Sunday start

Item: WCW6 Monday start

Size: 7 x 12 1/4

Imprint Area Top: 6 1/4 x 2 1/2

Item: WCW3 Sunday start

Item: WCW4 Monday start

Size: 9 x 12 1/4

Imprint Area Top: 7 3/4 x 2 1/2

Foil Stamped

Item: WCW5 Sunday start

Item: WCW2 Monday start

Size: 7 x 13

Imprint Area: 2 1/2 x 6 1/4

Calendar Board: Heavyweight board with full color or foil stamped imprint (see colors page 13)

Standard Features: Durable single rod design to prevent breakage.
WCW2/5 - Die cut easel back for table or desk.

Calendar Sheets: Week at a glance with room to write.

Monday start - back of all sheets lined for notes.

Sunday start - miscellaneous information on back of all sheets.

* Save calendar pages and notes for future reference by flipping the page over the plastic bar.



* Die cut easel back for table or desk available.



item	item	100	250	500	750	1000
WCW2/5	Foil stamped	4.87	4.72	4.58	4.50	4.37
WCW3/4/6/7	Full color	4.26	4.13	4.00	4.00	3.57

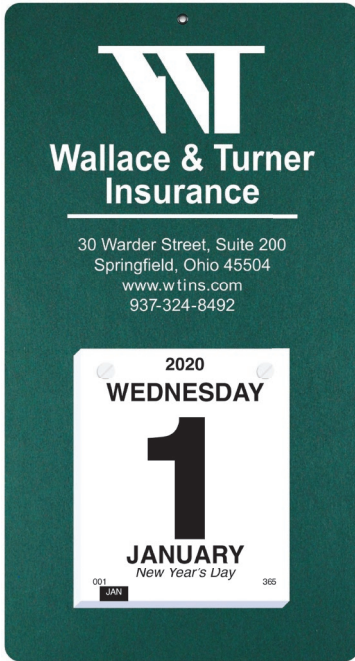
Plate charge (WCW2/5): \$60.00 per foil color (v).

(5P)



Daily Calendars

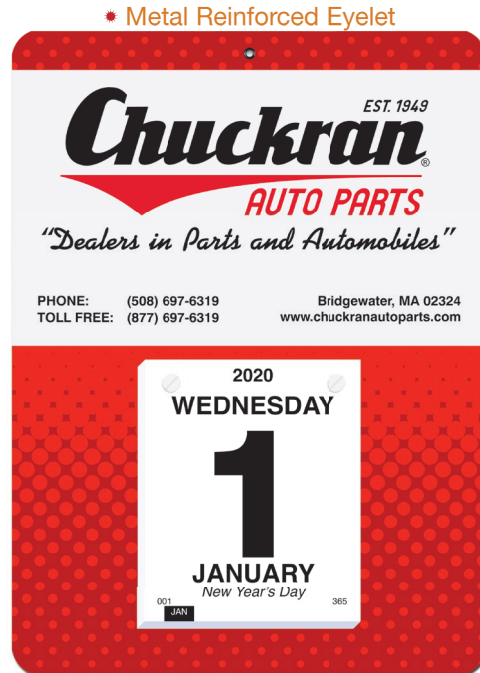
* 10 color choices at drum-line.com



DD1 - 7 x 13



DD2 - 6 x 12 1/4



DD3 - 9 x 12 1/4

Daily Wall

365 day calendar pad mounted to heavyweight board.
Available with full color or foil stamped imprint.

item	size	imprint	100	250	500	1000
DD1	7 x 13	Foil Stamped	10.16	8.53	8.43	8.20
DD2	6 x 12 1/4	Full Color	9.38	7.29	6.25	5.95
DD3	9 x 12 1/4	Full Color	11.53	10.40	8.52	8.38
DRP4	(refill pads - fits DD1, DD2, & DD3)		3.80	3.80	3.80	3.80

(4R)

Plate charge (DD1): \$60.00 per foil color (v)



DD7 - 5 x 6

Daily Desk

White plastic holder with desktop easel and hole for hanging,
printed one standard color (black, blue, red, gold, or silver),
365 sheet calendar pad inserted in easel.

item	100	250	500	1000
DD7	8.80	7.10	6.53	5.97
DRP7	(refill pads)		4.04	4.04

(4R)

options	add to base price
2nd ink color	\$60.00 + 63¢ ea

(v)

Executive Wall Calendars



211 - 9 X 19 1/2

Countryside Charm



Item: 211 - Countryside Charm

411 - Sunrise/Sunset

Size: 9 x 19 1/2

Imprint Area: 7 3/4 x 1 1/4

Paper Stock: 12 sheets, 80 lb. gloss cover. 12 photographs printed full color, company logo/tagline printed in black on bottom of each sheet.

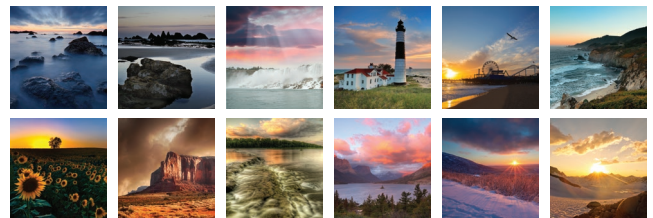
Standard Features: January-December (12 months) calendar printed in black. Coil bound with silver wire. Hole at top for hanging.

• Imprint on Every Sheet



411 - 9 X 19 1/2

Sunrise/Sunset



item	theme	100	250	500	1000
211	Countryside Charm	6.73	6.15	5.57	5.00
411	Sunrise/Sunset	6.73	6.15	5.57	5.00

(4R)



Monthly Wall Calendars



148 - 8 x 14

US Male



362436 - 8 x 14

Centerfold



Item: 148 - US Male
362436 - Centerfold
Size: 8 x 14
Imprint Area: 6 3/4 x 1 1/2

Paper Stock: 12 sheets, 80 lb. gloss text. 12 photographs printed full color with company logo/tagline printed in black on bottom of extended back sheet.

Standard Features: January-December (12 months) calendar printed in black. Coil bound with silver wire. Hole at top for hanging.

item	theme	100	250	500	1000
148	US Male	3.93	3.73	3.52	3.40
362436	Centerfold	3.93	3.73	3.52	3.40

(4R)

Monthly Calendars



January 2020

SUN	MON	TUE	WED	THU	FRI	SAT
			1	2	3	4
5	6	7	8 New Year's Day 1200	9 First Quarter Moon 2300	10 2300	11 4300
12 5300	13 8300	14 7300	15 8300	16 8300	17 Full Moon 10300	18 10300
19 12000	20 10300	21 10300	22 10300	23 14300	24 First Quarter Moon 17300	25 14300
26 19300	27 16300 Martin Luther King Day 0500	28 21300	29 20300	30 20300	31 New Moon 26300	



SOUTHERN METALCRAFT, INC.
Quality Metal Fabrication Since 1974
2675 Lithonia Industrial Blvd. Lithonia, GA 30058
Phone: 770-482-2923 Fax: 770-482-6292
www.southernmetalcraft.com

MW117 - 10 5/8 x 18 1/4

Serene Sunsets

• Free full color imprint

July 2020

SUN	MON	TUE	WED	THU	FRI	SAT
26	27	28	29	30	31	
19	20	21	22	23	24	25
12	13	14	15	16	17	18
5	6	7	8	9	10	11
		1	2	3	4	

July 2020

SUN	MON	TUE	WED	THU	FRI	SAT
			1	2	3	4
5	6	7	8	9	10	11
12	13	14	15	16	17	18
19	20	21	22	23	24	25
26	27	28	29	30	31	



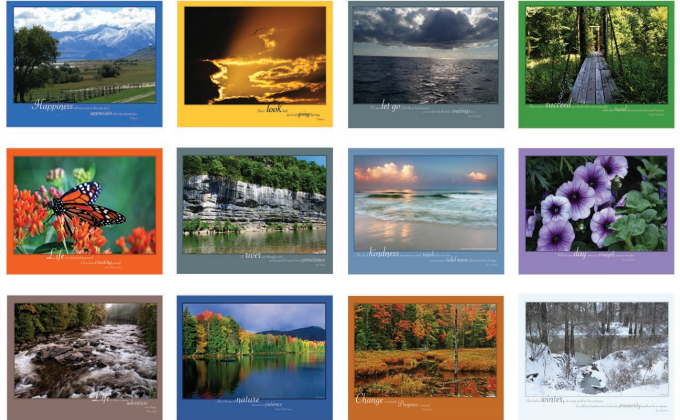
213 Campbell Street
Shelby, NC
704-484-0025

TC118 - 5 13/16 x 4 1/2

Peaceful Peaks

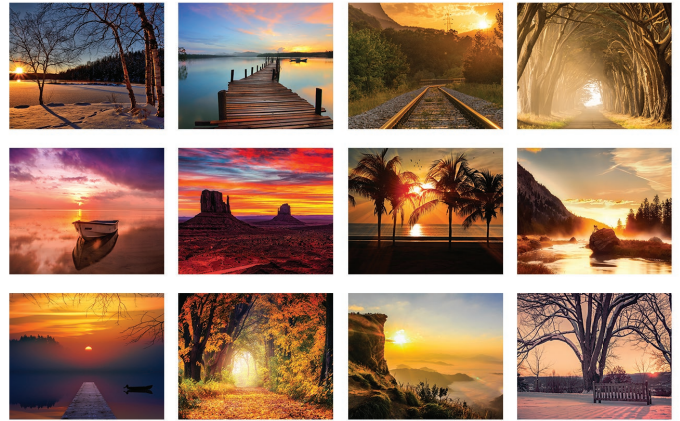
Motivations

MW116 - Coil Bound / MW116S - Stapled / TC116 - Tent



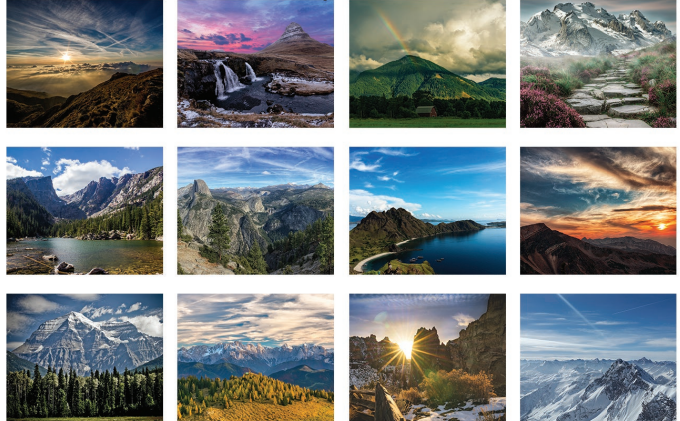
Serene Sunsets

MW117 - Coil Bound / MW117S - Stapled / TC117 - Tent



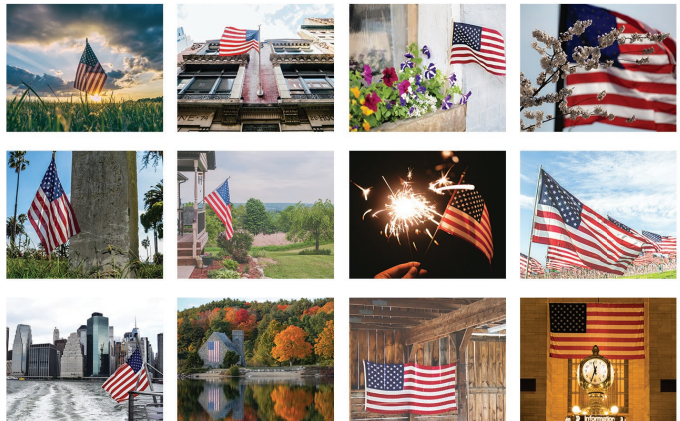
Peaceful Peaks

MW118 - Coil Bound / MW118S - Stapled / TC118 - Tent



Old Glory

MW119 - Coil Bound / MW119S - Stapled / TC119 - Tent



Monthly Calendars



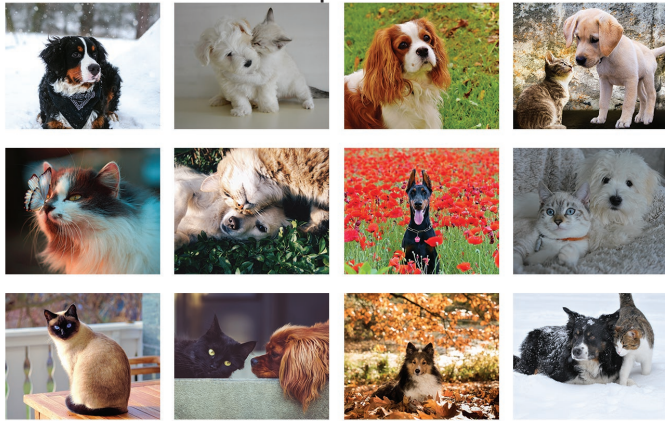
Agriculture

MW120 - Coil Bound / MW120S - Stapled / TC120 - Tent



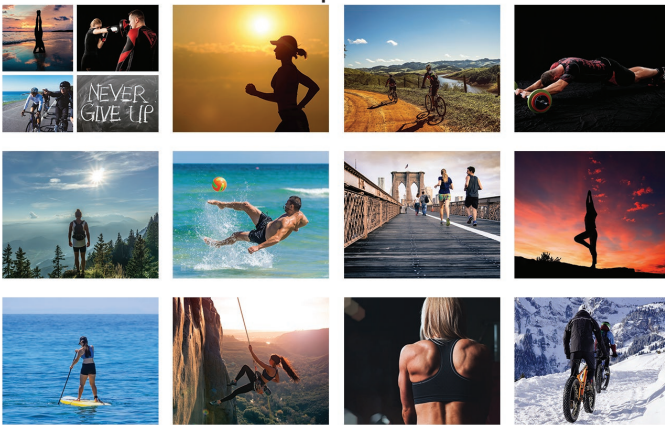
Forever Friends

MW121 - Coil Bound / MW121S - Stapled / TC121 - Tent



Active Lifestyles

MW122 - Coil Bound / MW122S - Stapled / TC122 - Tent



Magnificent Trains

MW123 - Coil Bound / MW123S - Stapled / TC123 - Tent



August 2020

SUN	MON	TUE	WED	THU	FRI	SAT
						1
2	3	4	5	6	7	8
9	10	11	12	13	14	15
16	17	18	19	20	21	22
23	24	25	26	27	28	29
30	31					



MW123S - 10 5/8 x 18 1/4

Magnificent Trains

• Coil bound or stapled - same price!



TC122 - 5 13/16 x 4 1/2

Active Lifestyle

Additional themes available at drum-line.com

January - December (12 months), full color imprint on bottom sheet/easel.

item		100	250	500	1000
MW116-123	Coil bound	3.93	3.73	3.52	3.40
MW116S -123S	Stapled	3.93	3.73	3.52	3.40
TC116-123	Tent	2.56	2.23	2.05	1.88

(4R)

Custom Photo Wall Calendars



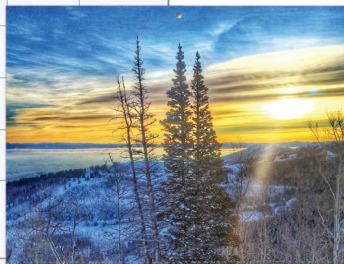
Chile Shrimp

March 2020

SUN	MON	TUE	WED	THU	FRI	SAT
1	2	3	4	5	6	7
8	9	10	11	12	13	14
15	16	17	18	19		
22	23	24	25	26		
29	30	31				

M & J Bistro
2503 N Tracy Blvd
Tracy, CA 95376
(209) 632-2727
LUNCH • DINNER • PRIVATE PARTIES

MW10 - 10 5/8 x 18 1/4



January 2020

SUN	MON	TUE	WED	THU	FRI	SAT
	1	2	3	4		
5	6	7	8	9	10	11
12	13	14	15	16	17	18
19	20	21	22	23	24	25
26	27	28	29	30	31	

PARK CITY
VAIL RESORTS
A DIVISION OF AEGION

MW17 - 5 5/8 x 9 7/8

Mini

• Coil bound or stapled same price!



SEPTEMBER 2020

SUN	MON	TUE	WED	THU	FRI	SAT
NOTES:	1	2	3	4	5	
6	7 Labor Day	8	9	10	11 Patriot Day	12
13	14	15	16	17	18	19 Rosh Hashanah
20	21	22	23	24	25	26
27	28 Yom Kippur	29	30	NOTES:		

FRENCH LICK RESORT®
FRENCH LICK & WEST BADEN, INDIANA
frenchlick.com • (888) 936-9360

MW10SE - 10 5/8 x 18 1/4

Easy Read

Full Size

Item: MW10/MW10S (Standard)
Item: MW10E/MW10SE (Easy Read)
Size: Open 10 5/8 x 18 1/4
Closed 10 5/8 x 10 1/4
Photo Size: 10 5/8 x 8 1/8
Ad Imprint Area: 10 x 1 1/2

Paper Stock: 12 sheets, 80 lb. gloss text. Front and back cover, 80 lb. gloss cover. Photographs printed full color with calendar printed two colors (exact PMS matches not available). Submit 13 custom photos (one per month plus the front cover). Company logo/tagline full color imprint on bottom of back sheet.

Standard Features: MW10: Coil bound with white wire. MW10S: Stapled. MW17: Coil bound with silver wire. Hole at top for hanging. January-December (12 months) calendar includes American holidays, moon phases, and Julian dates. Last sheet features two years at a glance.

Mini

Item: MW17
Size: Open 5 5/8 x 9 7/8
Closed 5 5/8 x 5 3/4
Photo Size: 5 5/8 x 4 1/4
Ad Imprint Area: 5 x 1

- 13 custom photos
- Only 100 minimum order
- Start any month
- Customized date blocks available

Personalize it!

See drum-line.com for details.

item	100	250	500	1000
MW17 Coil bound	3.38	3.10	2.79	2.50
MW10/MW10E Coil bound	6.73	6.15	5.57	5.00
MW10S/MW10SE Stapled	6.73	6.15	5.57	5.00

(4R)

Custom Photo Tent Desk Calendars

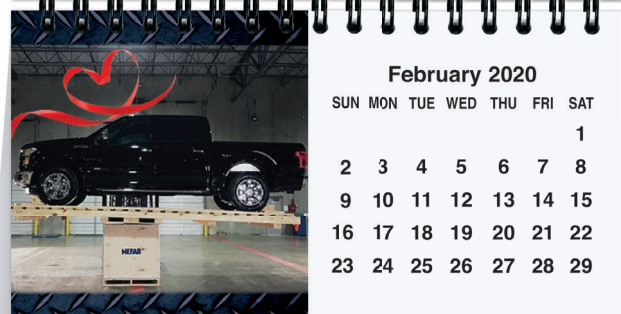
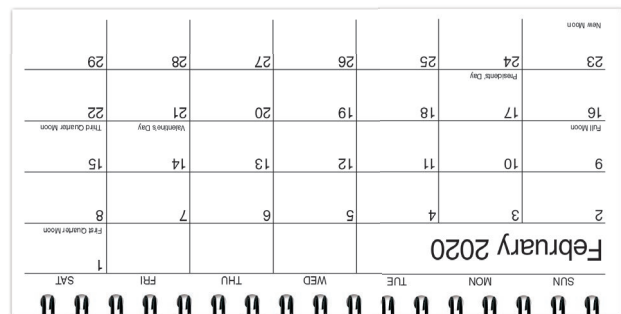


TC5 - 8 3/4 x 4

• 13 Custom Photos!

• Start any month

Personalize it!
See drum-line.com for details.



TC4 - 5 13/16 x 4 1/2

Item: TC4
Overall Size: 5 13/16 x 4 1/2
Photo Size: 3 x 2 15/16
Easel Imprint Area: 5 5/16 x 1 1/16
Flat Size for Mailing: 5 13/16 x 6 1/4

Item: TC5
Overall Size: 8 3/4 x 4
Photo Size: 5 5/8 x 3 7/8
Imprint Area: 2 7/8 x 1
Flat Size for Mailing: 8 3/4 x 5 3/4

Cover Sheet: Your photo printed full color on 80 lb. gloss cover.
Calendar Sheets: 80 lb. gloss text, 12 calendar sheets, front month at a glance and back month at a glance with room to write. 12 custom photos printed full color. Calendar in black only. Back of the last calendar sheet has a year at a glance calendar for the current year and the next year.

TC4 Easel Back: White cover stock with company logo and information printed in one to full color on two sides. Pre-scored back folds into an easel to set on a desk. Easel back contains "Emergency Phone Numbers" and "Future Planning."

Binding: Black wire-o.

item	size	100	250	500	1000
TC4	5 13/16 x 4 1/2	5.74	3.78	3.02	2.45
TC5	8 3/4 x 4	5.91	3.96	3.19	2.68

(4R)

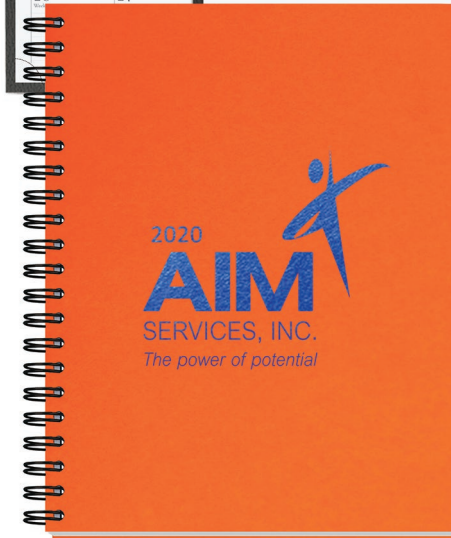
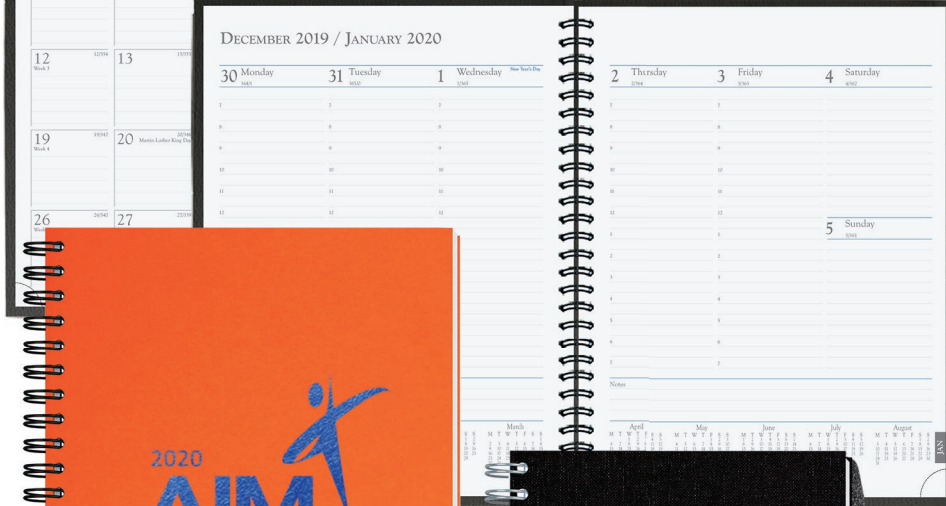
Time Managers



Colors shown are a printed representation. Request swatch for exact color.



• Monthly & Weekly Views All in One



TM8 - 8 1/4 x 10 5/8 Tangerine (304)



TM7-PS - 7 x 10 Black Linen (334)



TM5 - 5 x 8 Lapis (300)

Covers: Sturdy heavyweight stock, foil stamped in one standard color.

Pen Safe Back Cover (-PS): Black heavyweight pen safe back with elastic closure/bookmark and pen loop. A free Dynamic Pen comes inserted in loop. Choose black, frost, blue, or red.

Inside Sheets: 14 months (December - January), monthly and weekly views printed in blue and gray on 60 lb. white offset with perforated page corners, reference pages, and white double pocket inserted in the back.

Binding: Wire-O on left side in black, pewter or white.

Standard Foil Colors: Gloss-Black, White, Ivory, Red, Green, Blue, Navy, Orange, Pink; Metallic-Silver, Gold, Copper, Red, Green, Blue.

item	size	imprint area	50	100	250	500	1000
TM5	5 x 8	16 sq. in.	6.52	5.87	5.43	5.16	4.90
TM5-PS	5 x 8	16 sq. in.	7.81	7.16	6.72	6.45	6.19
TM7	7 x 10	18 sq. in.	10.35	9.32	8.59	8.19	7.76
TM7-PS	7 x 10	18 sq. in.	11.64	10.61	9.88	9.48	9.04
TM8	8 1/4 x 10 5/8	18 sq. in.	10.71	9.65	8.89	8.47	8.03
TM8-PS	8 1/4 x 10 5/8	18 sq. in.	12.00	10.94	10.18	9.75	9.32

Plate charge: \$60.00 per foil color (v)

(5R)

Deluxe Time Managers

Monthly & Weekly Views
All in One

* Deluxe Padded Covers



TMD8 - 8 1/4 x 10 5/8
Chocolate (403)

TMD7 - 7 x 10
Ruby Red (405)

TMD5 - 5 x 8
Evergreen (406)

* Ribbon Marker



Colors shown are a printed representation. Request swatch for exact color.

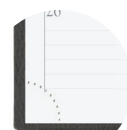
Foil Colors



Colors shown are a printed representation. Request swatch for exact color.



* Handy pocket in back



* Perforated corners for easy page marking



* Concealed binding lays flat for easy writing

Covers: Deluxe padded covers with wrapped edges, foil stamped in one standard color or debossed. Chocolate (403), Thunder Gray (404) and Cobalt Blue (408) covers are available burnished, which means the cover changes to a darker shade when debossed.

Inside Sheets: 14 months (December - January), monthly and weekly views printed in blue and gray on 60 lb. white offset with perforated page corners, reference pages, ribbon marker and white double pocket inserted in the back.

Binding: Wire-O bound in black on left side, concealed by a wraparound cover.

item	size	imprint area	50	100	250	500	1000
TMD5	5 x 8	16 sq. in.	11.67	10.52	9.71	9.25	8.87
TMD7	7 x 10	18 sq. in.	17.02	15.77	14.85	14.30	13.81
TMD8	8 1/4 x 10 5/8	18 sq. in.	17.75	16.48	15.55	14.98	14.47

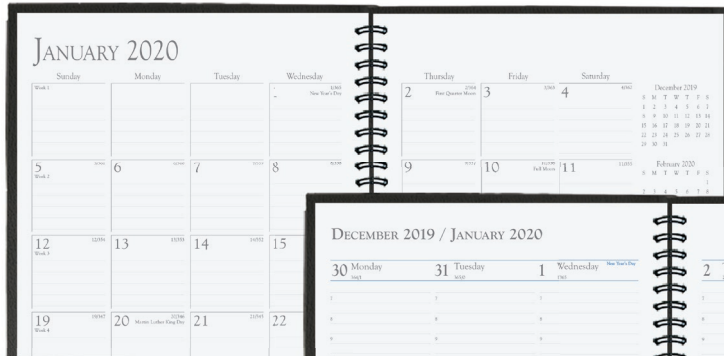
Plate charge: \$60.00 per foil color (v)

(5R)

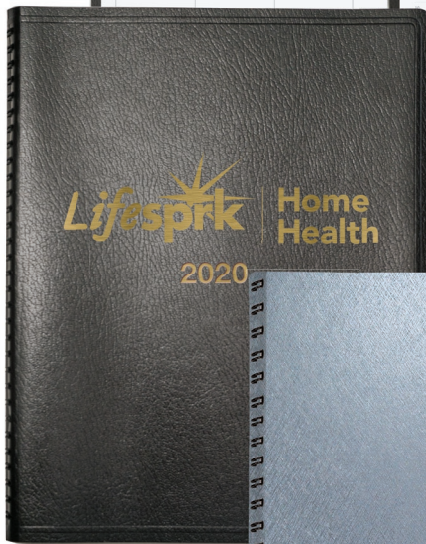
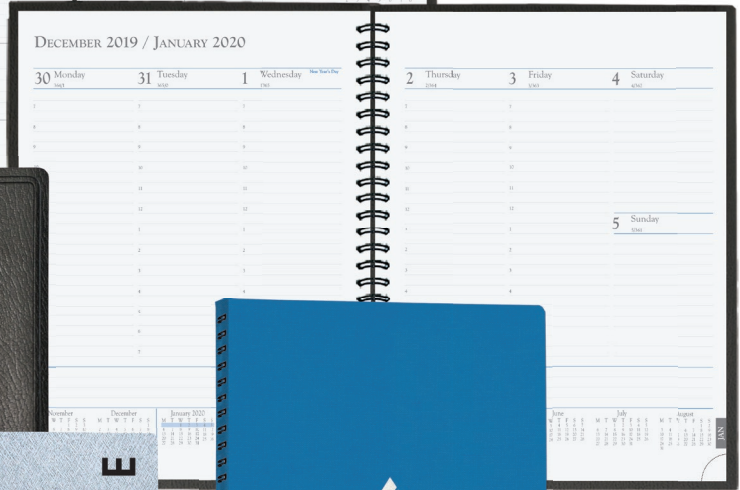
Flex Time Managers



Colors shown are a printed representation. Request swatch for exact color.



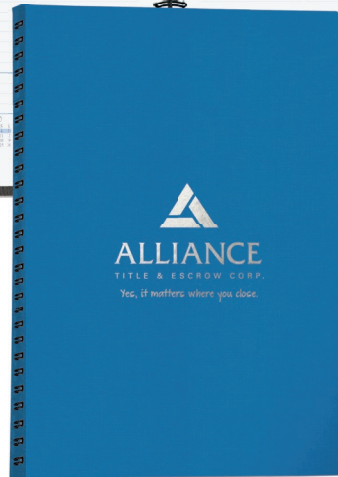
• Monthly & Weekly Views All in One



TMF8 - 8 1/4 x 10 5/8 Black (410)



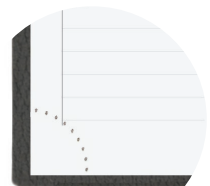
TMF5 - 5 x 8 Silver (612)



TMF7 - 7 x 10 Brilliant Blue (606)



• Semi-concealed binding



• Perforated corners for easy page marking

Covers: Flexible leatherette or textured paper foil stamped in one standard color. Metro leather-like covers available blind debossed or foil stamped. Two round corners.

Inside Sheets: 14 months (December - January), monthly and weekly views printed in blue and gray on 60 lb. white offset with perforated page corners, reference pages, and white double pocket inserted in the back.

Binding: Semi-concealed black wire-o on left side.

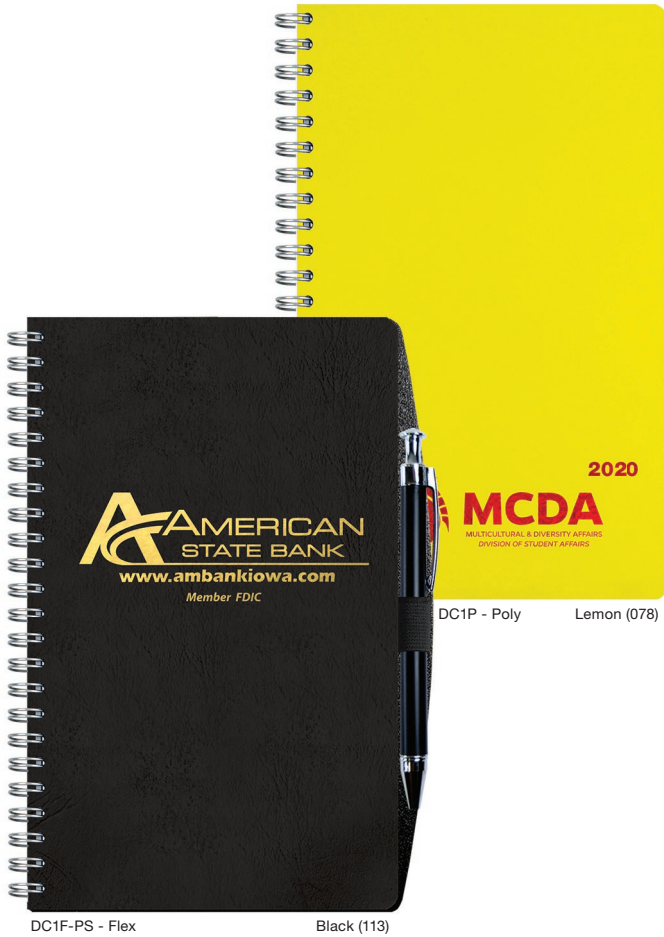
Standard Foil Colors: Gloss-Black, White, Ivory, Red, Green, Blue, Navy, Orange, Pink; Metallic-Silver, Gold, Copper, Red, Green, Blue.

item	size	imprint area	100	250	500	1000
TMF5	5 x 8	16 sq. in.	7.43	6.89	6.71	6.62
TMF7	7 x 10	18 sq. in.	9.59	9.04	8.86	8.76
TMF8	8 1/4 x 10 5/8	18 sq. in.	10.77	10.23	10.06	9.96

Plate charge: \$60.00 per foil color (v)

(4R)

Weekly Planners



DC1F-PS - Flex

Black (113)

DC1P - Poly

Lemon (078)



DC14-PS - Full Color



Colors shown are a printed representation. Request swatch for exact color.

Size: 5 1/4 x 8 1/4 **Foil Imprint Area:** 16 sq. in.

Poly Cover: 30 pt. poly front, foil stamped in one standard color. White heavyweight 24 pt. coated one side back. Poly back available, see options below.

Flex Covers: Navy, Green, Red, or Black leatherette, foil stamped in one standard color on front cover.

Full Color Cover: White 15 pt. coated one side, printed one to full color with clear coat. White 24 pt. back.

Pen Safe Back Cover (-PS): Black heavyweight back with elastic closure/bookmark and pen loop. A free Dynamic Pen comes inserted in loop. Choose Black, Blue, Red, or Frost.

Standard Foil Colors: Gloss-Black, White, Ivory, Red, Green, Blue, Navy, Orange, Pink; Metallic-Silver, Gold, Copper, Red, Green, Blue.

Inside Sheets: January - December week at a glance calendar sheets with space for notes.

Binding: Wire-O bound on left side in black, pewter, or white.

Academic Styles available
at drum-line.com

item	description	100	250	500	1000
DC1P	poly cover	5.69	5.11	4.92	4.83
DC1P-PS	poly cover with pen safe back	6.97	6.40	6.21	6.12
DC1F	flex cover	5.41	4.83	4.64	4.54
DC1F-PS	flex cover with pen safe back	6.70	6.12	5.92	5.83
DC14	full color	5.44	5.19	4.87	4.01
DC14-PS	full color with pen safe back	6.73	6.48	6.16	5.29

Plate Charge: \$60.00 per foil color (v)

(4R)

Full Color Monthly Planners



MFP14 - 6 1/2 x 10



MFP24 - 8 1/4 x 10 3/4



MPC1 - 3 5/8 x 6 1/4

Includes Imprint
on Back Cover

Academic styles available
at drum-line.com

Cover: White 10 pt. coated one side, printed full color with clear coat on outside front and/or back. Front and back copy can be same or different. Back will be blank unless otherwise requested.

Inside Sheets: Monthly calendar view, white offset printed gray ink on two sides. No customization available. Includes 14 months (December – January).

Binding: Bound on the left side with two staples. Square corners.

item	size	100	250	500	1000
MPC1	3 5/8 x 6 1/4	n/a	2.68	2.22	2.00
MFP14	6 1/2 x 10	3.80	3.49	3.17	2.85
MFP24	8 1/4 x 10 3/4	4.08	3.79	3.43	3.13

(4R)



Monthly Planners



MFP2 - 8 1/4 x 10 3/4 Titanium (614)

MFP1 - 6 1/2 x 10 Red (610)

MPC2 - 3 5/8 x 6 1/4 Tangerine (603)



Colors shown are a printed representation. Request swatch for exact color.

Cover: Flexible leatherette or textured paper, foil stamped in one standard color. Metro leather-like covers available blind debossed or foil stamped.

Inside Sheets: Monthly calendar view, white offset printed gray ink on two sides. No customization available. Includes 14 months (December – January).

Binding: Bound on the left side with two staples. Square corners.

Standard Foil Colors: Gloss-Black, White, Ivory, Red, Green, Blue, Navy, Orange, Pink; Metallic-Silver, Gold, Copper, Red, Green, Blue.

Academic styles available at drum-line.com

item	size	imprint area	100	250	500	1000
MPC2	3 5/8 x 6 1/4	3 x 5	n/a	2.68	2.22	2.00
MFP1	6 1/2 x 10	18 sq. in.	3.80	3.49	3.17	2.85
MFP2	8 1/4 x 10 3/4	18 sq. in.	4.08	3.79	3.43	3.13

Plate charge: \$60.00 per foil color (v)

(4R)

New for 2020

Bradford National Bank
 Greenville 100 E. College 664-2300
 Highland 1100 Mercantile Drive 651-1700
 Marine 102 N. Duncan 887-9000
 Member FDIC www.BradfordBank.com Equal Housing Lender

JANUARY 2020

6 Sheet Almanac p.2

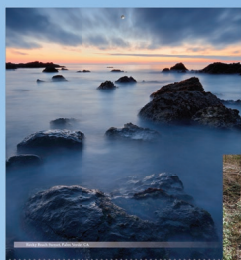
7SPEC
 Weather Vane p.3

BAILEY
 Large Utility p.7

TRAUTSCHOLD MILLWORK, LTD.
 MANUFACTURERS OF FINE MILLWORK AND CUSTOM CABINETS SINCE 1893
 PHONE (254) 752-6541 • FAX (254) 752-0221
 www.trautscholdmillwork.com
 1504 S. Franklin Ave. • P.O. Box 1715 • Waco, Texas 76787

JANUARY 2020

Contractor Calendar p.5



SUNRISE/SUNSET
 p.20

COUNTRYSIDE CHARM
 p.20

MODERN UTILITY
 p.7

MESMER FERTILIZER
 Seeds Chemicals Custom Application
 Bethel, MO 660-284-6624

Large Memo Apron p.6

US MALE
 p.21

CENTERFOLD
 p.21

YEAR AT A GLANCE
 p.10

Cross Roads Drive In and Feed
 Feed, Hay, Vet. Supplies, Soda, Minnows
 100 South Forest Hill Dr. Everman, TX 76146
 817-293-8740
 Big V, Bayco, Blyant, Winteland, Diamond, Nutrena, & Victor

Year at a Glance p.11



DRUM-LINE Inc.

The Complete Source for Paper Products
 Drum-Line.com | ASI 50873 | PPAI 102565 | SAGE 50670

American Owned, American Made, American Jobs.

